

SAN DIMAS BLDG. DIST. NO. 10

PROFILE ALIGNMENT AND GRADE OF P.C. 3529

SANITARY SEWERS PAGE 1

TO BE CONSTRUCTED IN

TRACT N^o 21003

26,781

PRIVATE CONTRACT NO. 3529

W.S. 47

2 SHEETS; 1 PAGES

SCALE: VERT. 1" = 4'

WORK: 1" = 40'

JULY, 1958

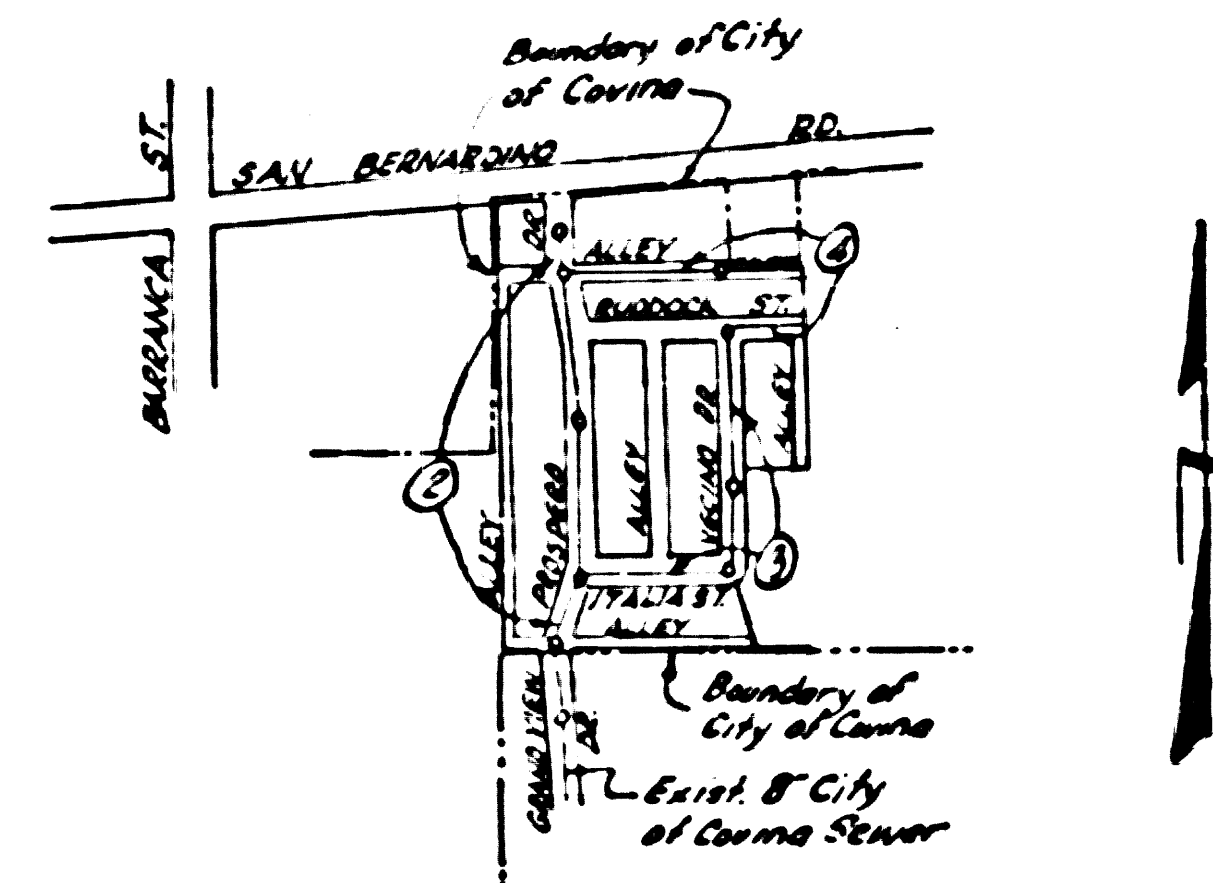
PREPARED IN THE OFFICES OF

HAROLD L. JOHNSON

REG. C. E. NO. 7668

FOR LEGEND SEE PLAN NO. S-A-64

B.M. 56457 El. 588.663
 4" dia. in concrete headwall of steel pipe crossing 1.85' N of & 1.85' W of E. of
 Blvd. 110 St. of Grand Ave. Subtract 0.018 from El. 588.663 for
 San Dimas Road



INDEX MAP
 TR. N^o 21003 P.C. 3529
 SCALE: 1" = 800'

- NOTE:
 PROVIDE STAKES ON THE PROPERTY LINE OR PROPERTY LINES PRODUCED AT RIGHT ANGLES TO THE SEWER LINE AT THE CENTER LINE OF EACH MANHOLE.
 NO REPRESENTATIVE OF THE COUNTY ENGINEER WILL SURVEY OR LAYOUT ANY PORTION OF THE WORK.
 THE OWNER OR HIS AUTHORIZED REPRESENTATIVE SHALL FURNISH THE COUNTY ENGINEER WITH GRADE SHEETS AND STATION FOR ALL HOUSE LATERALS AND T BRANCHES AND SHALL PROVIDE STAKES FOR THEM AT THEIR PROPER LOCATIONS WITH STATIONING AND PLANNED. ANY CHANGE IN LOCATION SHALL BE REQUESTED IN WRITING BY THE OWNER OR HIS REPRESENTATIVE.
 NO REVISIONS SHALL BE MADE IN THESE PLANS WITHOUT THE APPROVAL OF THE COUNTY ENGINEER.
 1. USE STANDARD MANHOLE FRAMES AND COVERS, S.A. 117.
 2. USE STANDARD STRENGTH PIPE EXCEPT AS NOTED.
 3. USE CEMENT MORTAR OR "SPEED-SEAL" OR "WEDGE-LOCK" FOR ALL V.C.P. JOINTS PER S.P.C.'S. SEC. 36 & 48.
 4. RESURFACE ALL TRENCH WITHIN PAVED AREA TO MEET L. A. COUNTY ROAD DEPT. OR CALIF. STA'S HIGHWAY DEPT. REQUIREMENTS IN ACCORDANCE WITH PERMITS.
 5. ENCASE FOUR FEET OF SEWER AT POINTS OF INTERFERENCE WITH POLES, S.A. 172 CODE III.
 6. HOUSE LATERALS TO BE CONSTRUCTED WITH INVERTS AT PROPERTY LINE 6 FEET BELOW CURB GRADE OR 2' OF AL. BY
 7. ALL STRUCTURES SHALL BE BRICE SEWER STRUCTURES, S.A. 104.
 8. FOR ALLOWABLE LEAKAGE TEST USE FORMULA NO. 1 S.P.C. 1, SEC. 34.
 9. MANHOLE TOPS IN UNIMPROVED HIGHWAYS TO BE 4" ABOVE FINISHED GRADE.
 10. THE PRIVATE ENGINEER SHALL FURNISH THE HOUSE LATERAL DEPTH AT THE PROPERTY LINE BELOW THE GRADE OF THE TOP OF CURB OR THE 8" OF ALLEY FOR EACH HOUSE LATERAL ON THE GRADE SHEET.
 11. THE CONTRACTOR SHALL NOTIFY THE CONSTRUCTION & STORM DRAIN DIVISION BY TELEPHONE, 451-5400, 3-4747 EXT. 562, AT LEAST 24 HOURS BEFORE STARTING ANY WORK UNDER THIS CONTRACT.

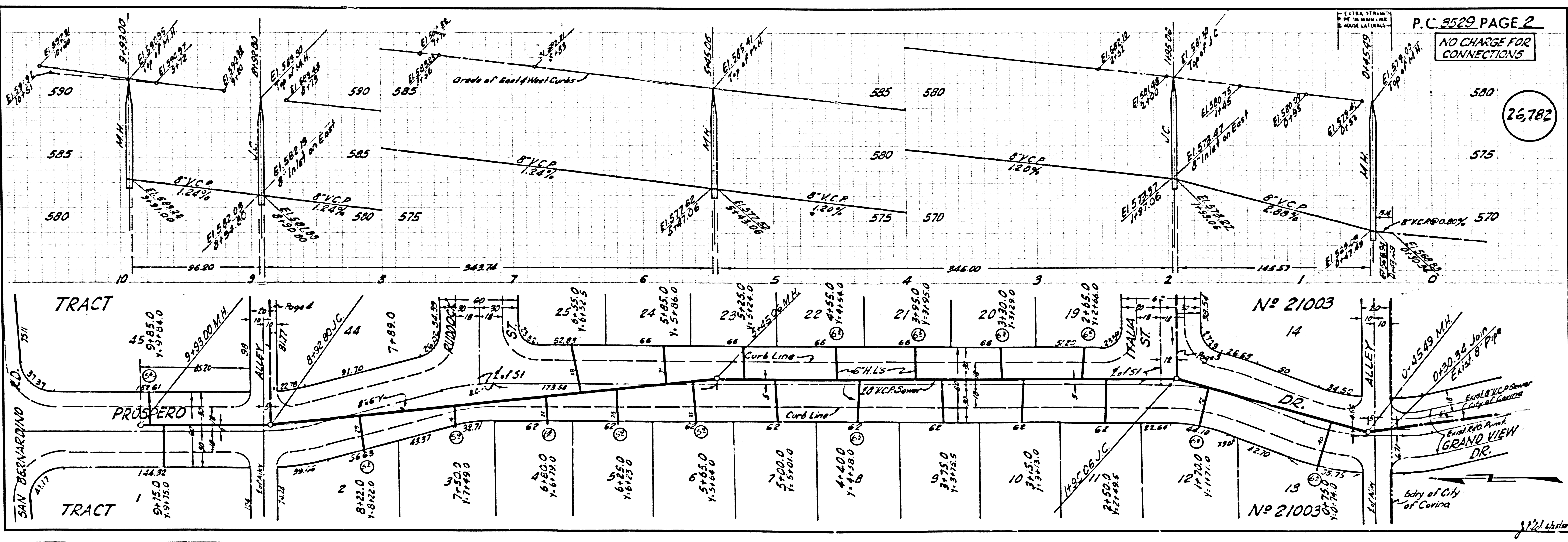
NO CHARGE FOR CONNECTIONS
 EX. Conditions 10-17-58

NOTE:
 GRADES TO WHICH THIS IMPROVEMENT IS TO BE CONSTRUCTED ARE SHOWN ON PLANS AND PROFILES. GRADE POINTS FOR TOP OF CURBS, CENTER LINE OF SIDEWALKS OR CENTER LINE OF ALLEYS ARE SHOWN BY CIRCLES ON PROFILES. AT ALL POINTS BETWEEN DESIGNATED POINTS THE GRADE SHALL BE ESTABLISHED SO AS TO CONFORM TO A STRAIGHT LINE DRAWN BETWEEN SAID DESIGNATED POINTS.
 ELEVATIONS ARE IN FEET ABOVE U.S. SEA LEVEL DATUM OF 1929.
 THIS DRAWING AND THE DATA HEREON ARE HEREBY MADE A PART OF THE SPECIFICATIONS AND SHALL BE CONSIDERED AS SUCH. ANY REVISIONS SHALL BE MADE BY THE COUNTY ENGINEER AND SHALL BE PROSECUTED ONLY IN THE PRESENCE OF THE COUNTY ENGINEER.
 BEFORE WORK CAN BE STARTED, THE CONTRACTOR MUST OBTAIN A PERMIT TO EXCAVATE IN COUNTY STREETS FROM THE L. A. COUNTY ROAD DEPT. 207 1/2 AL. & MAKE A REPORT WITH THE COUNTY ENGINEER, ROOM 224 MAIN AMERICAN BUILDING, 332 50 BROADWAY SUFFICIENT TO COVER THE COST OF CONSTRUCTION INSPECTION AND RECORD PLANS.
 APPROVAL OF THIS PLAN BY THE COUNTY OF LOS ANGELES DOES NOT CONSTITUTE A REPRESENTATION AS TO THE ACCURACY OF THE LOCATION OF OR THE EXISTENCE OR NON-EXISTENCE OF ANY UNDERGROUND UTILITY PIPE, OR STRUCTURE WITHIN THE LIMITS OF THIS PROJECT. THIS NOTE APPLIES TO ALL PAGES.
 IF WORK IS TO BE DONE IN A STATE HIGHWAY, A PERMIT MUST BE OBTAINED FROM THE STATE OF CALIFORNIA, DIVISION OF HIGHWAYS, 120 SOUTH SPRING STREET.

COUNTY OF LOS ANGELES, CALIFORNIA

APPROVED, JOHN A. LAMBE, COUNTY ENGINEER
 APPROVED, A. M. BAWN, CHIEF ENGINEER
 BY H. L. Johnson SANITATION ENGINEER
 BY H. L. Johnson OFFICE ENGINEER
 CHECKED BY W. C. Giddis 10-21-58
 OFFICE OF COUNTY ENGINEER, REG. C. E. NO. 9486

APPROVED, CITY OF COVINA
 BY Edward E. Gause 10/9/58
 CITY ENGINEER



P.C. 3529 PAGE 2

NO CHARGE FOR CONNECTIONS

26,782

