

PC 3538

PAGE 2

NO CHANGE FOR CONNECTIONS

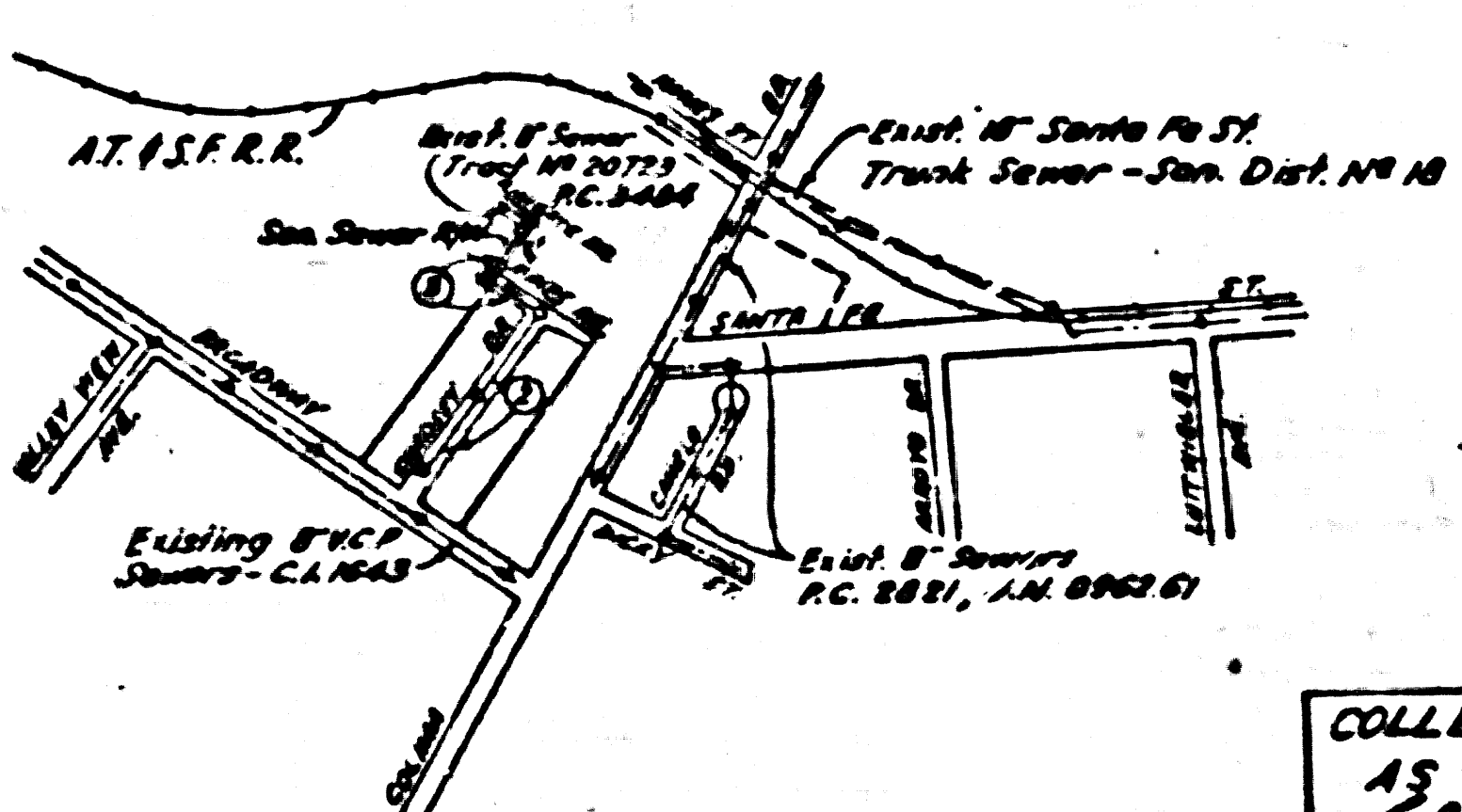
21750

B.M. SY 1228, EL. 197.907  
L.I.T. in center of same headwall  
to grid of drain pipe 2.55' N.E.  
of E. of Santa Fe St, 1.18' N. of  
E. of Calima Rd.

SHEETS	PAGES
1	1-2

### WHITTIER BLDG. DIST. NO 11

- NOTE:**  
Provide stakes on the property lines or property lines produced at right angles to the cover line of the center line of each manhole.
- The owner or his authorized representative shall furnish the County Engineer with grade sheets and stations for all house laterals and Y branches and shall provide stakes for them at their proper locations with elevations plainly marked. Any change in location shall be requested in writing by the owner or his representative.
- No revisions shall be made to these plans without the approval of the County Engineer.
1. Use standard manhole frames and covers, S-117.
  2. Use standard strength pipe except as noted.
  3. Use standard marker for all vitrified clay pipe joints.
  4. Resurface all trench within paved area to meet L.A. County Road Dept. or California State Highway Dept. requirements in accordance with permit.
  5. Excavate four feet of sewer at points of interference with poles, S-115.
  6. House laterals to be constructed with laterals at property line... feet below curb grade.
  7. All structures shall be brick sewer structures, S-104.
  8. For allowable leakage test, see Formula No. 1, Spc's, Sec. 81.
  9. Manhole tops in unimproved Right-of-Way to be 6" above finish grade.



COLLECT CHARGES AS INDICATED  
Effective 7-25-55

INDEX MAP  
TRACT NO 16940  
SCALE 1"=600'  
PC 3538

checked 11-9-55 [Signature]

PROVIDE ALIGNMENT AND GRADES OF  
SANITARY SEWERS  
TO BE CONSTRUCTED IN

TRACT NO 16940

PRIVATE CONTRACT NO. 3538  
W. S. 34  
1 SHEET

Scales: HORIZ. 1"=40' VERT. 1"=4'  
JUNE, 1955  
PREPARED IN THE OFFICE OF

William J. Fox, County Engineer  
No. 22869

FOR LEGEND SEE PLAN NO. S-2-44

**NOTE:**  
Grades to which this improvement is to be constructed are shown on plans and profiles. 10 inch points for top of manhole, center line of streets, or center line of alleys are shown by circles on profiles. All elevations between designated points are grades shall be sighted to or to conform to a straight line drawn between said designated points.

Excavations are to be done in accordance with the specifications of the County Engineer. Work shall be constructed according to specifications on file in the office of the County Engineer and shall be constructed only in the presence of the County Engineer.

Before work can be started the contractor must obtain a permit to excavate in County streets from the L.A. County Road Dept., 126 W. 1st St. and make a deposit with the County Engineer, Office of Public Works, sufficient to cover the cost of construction inspection and record plans.

Approval of this plan by the County of Los Angeles does not constitute a representation as to the accuracy of the location of or the existence or non-existence of any underground utility, pipe, or structure within the limits of this project. This note applies to all sheets.

If work is to be done in a State Highway, a permit shall be obtained from the State of California, Division of Highways, 126 South Spring Street.

COUNTY OF LOS ANGELES, CALIFORNIA

Approved, William J. Fox, County Engineer  
Approved, A. M. Stone  
A. M. Stone, County Engineer

Checked by: [Signature] 7-25-55  
Office of County Engineer, Box G. S. No. 2840

PC 3538  
PAGE 1

21749

PC 3538  
TRACT NO 16940

PC 3538

PC 3538

PC 3538

PC 3538

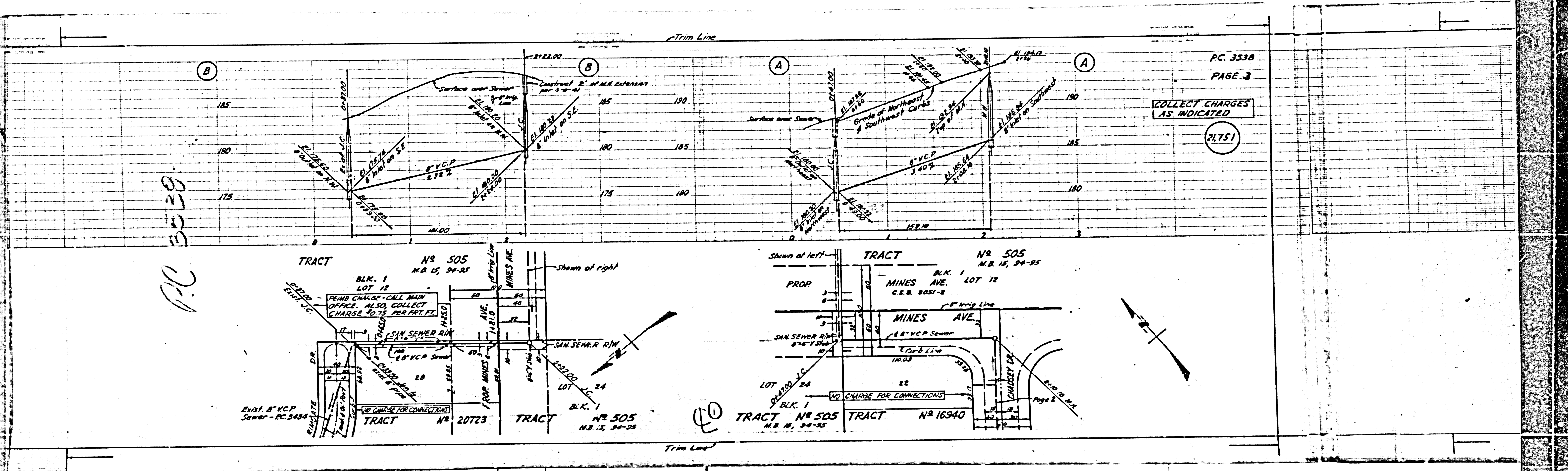
PC 3538

PC 3538

PC 3538



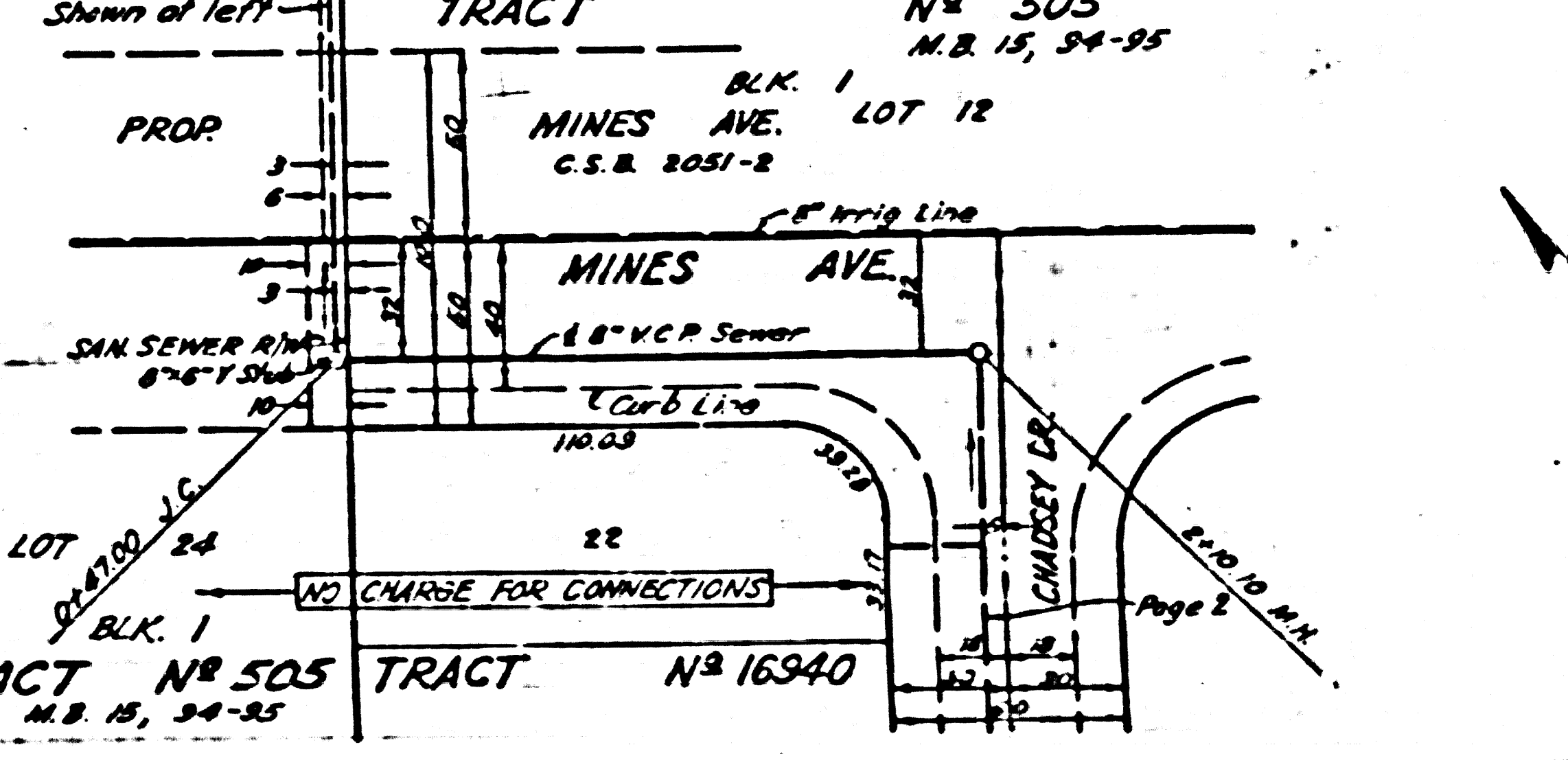
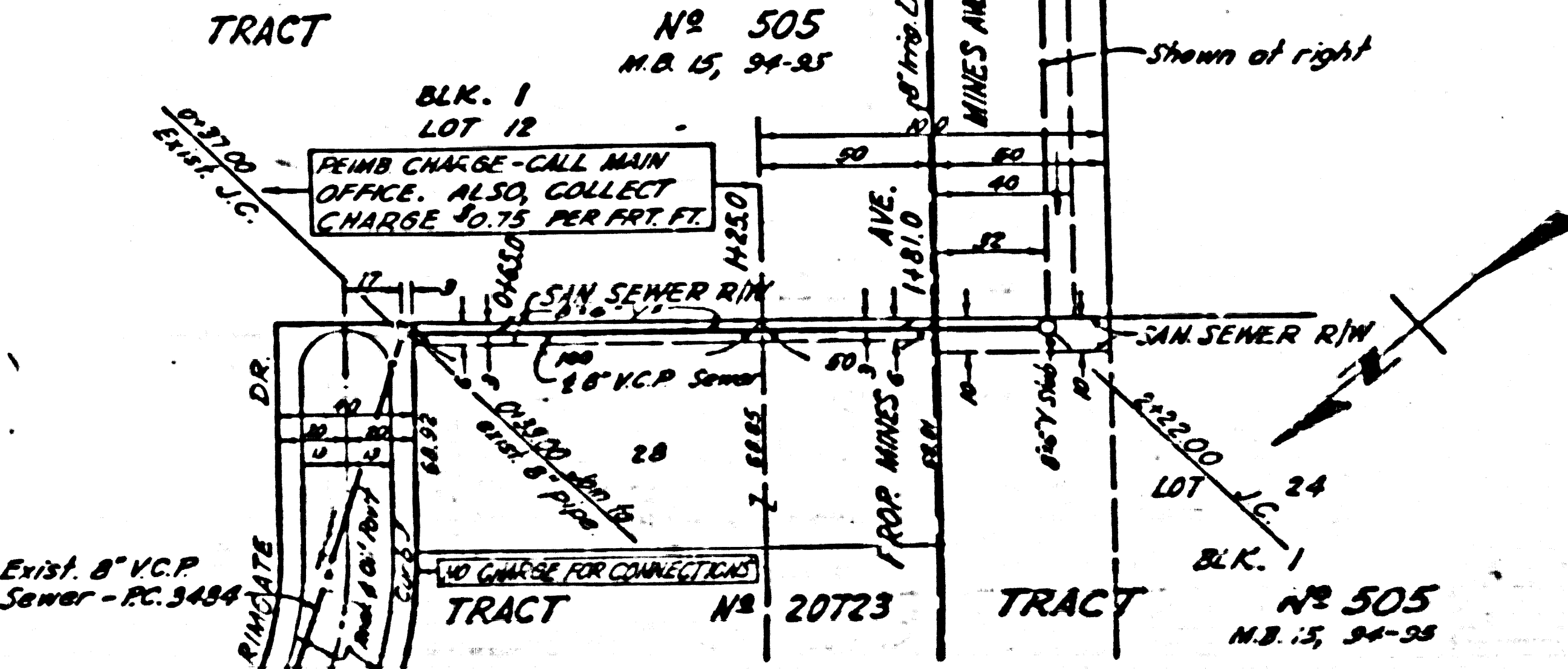
3030  
21



PG. 3538  
PAGE 3

COLLECT CHARGES  
AS INDICATED

21751



Page 2