

B.M. S.D. 1081 - L.Y.T. near S. Edge of Cone Walk in House No. 807. Plunge Area 4' 00" N of 8' 00" W of Int. Temple Ave. 2' 5" W. of Dep. of Walk Elev. 308.141

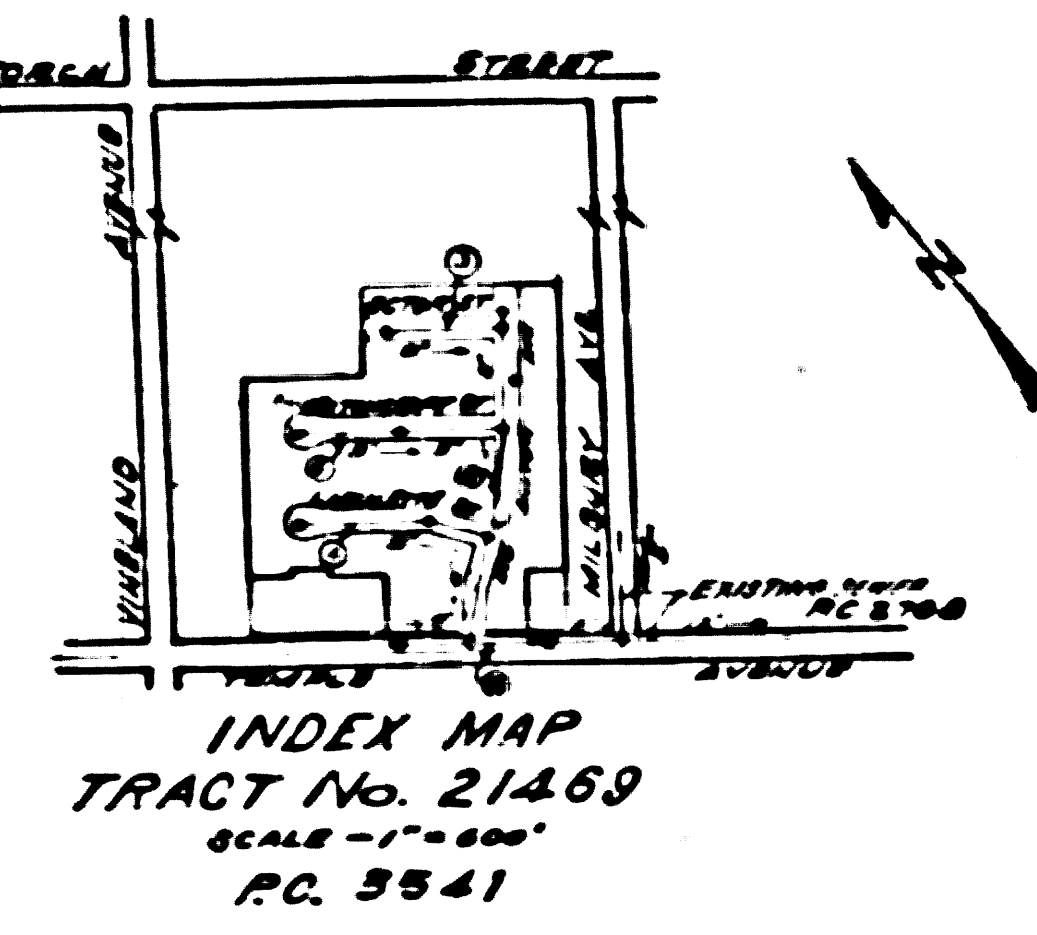
SHEET NO.	PAGES
1	1-5

COLLECT CHARGES AS INDICATED

L.K. Clarke 2-21-55

Trim Line 7
PUENTE BLDG. DIST. NO. 2

- NOTE:**
- Provide stakes on the property lines or property lines produced at right angles to the sewer line at the center line of each manhole.
- No representative of the County Engineer will survey or layout any portion of the work.
- The owner or his authorized representative shall furnish the County Engineer with grade sheets and stations for all house laterals and Y branches and shall provide stakes for them at their proper locations with stationing plainly marked. Any change in location shall be requested in writing by the owner or his representative.
- No revisions shall be made in these plans without the approval of the County Engineer.
1. Use standard manhole frames and covers, S-a-117.
 2. Use standard strength pipe except as noted.
 3. Use cement mortar for all vitrified clay pipe joints.
 4. Resurface all trench within paved area to meet L.A. County Road Dept. or California State Highway Dept. requirements in accordance with permit.
 5. Encase four feet of sewer at points of interference with poles, S-a-119.
 6. House laterals to be constructed with inverts at property line $\frac{1}{2}$ foot below curb grade except as noted.
 7. All structures shall be brick sewer structures, S-a-104.
 8. For allowable leakage test, use Formula No. 1, Spec's., Sec. 51.



Checked 10-11-55 *W. J. Fox*

Revisions: Page 3 Section A
 Sewer extended 60' in -
 Temple - 1 ft. added.
 Approved: *K. H. ...* 9-20-55
 Office of County Engineer
 Reg. C. E. 7860

PROFILE ALIGNMENT AND GRADE OF
SANITARY SEWERS
 TO BE CONSTRUCTED IN

TRACT No. 21469

PRIVATE CONTRACT NO. 3541
 W. S. 46
 SHEET 1 OF 1

Scale: VERT. 1" = 4'
 HORIZ. 1" = 40'
 JUNE, 1955

PREPARED IN THE OFFICES OF
SECURITY ENGINEERING COMPANY
Robert A. Sebring
 No. C. E. No. 8109

FOR LEGEND SEE PLAN NO. S-a-64

NOTE:

Grades to which this improvement is to be constructed are shown on plans and profiles. Grade points for top of curbs, center line of streets, or center line of alleys are shown by circles on profiles. At all points between designated points the grade shall be established so as to conform to a straight line between said designated points.

Elevations are in feet above U.S.G.S. datum or mean sea level.

The drawing and the data hereon are hereby made a part of the specifications.

Work shall be constructed according to specifications on file in the office of the County Engineer and shall be prosecuted only in the presence of the County Engineer.

Before work can be started, the contractor must obtain a permit to excavate in County streets from the L.A. County Road Dept., 108 W. 2nd St. and make a deposit with the County Engineer, 220 S. Broadway, Room 318, sufficient to cover the cost of construction inspection and record plans.

Approval of this plan by the County of Los Angeles does not constitute a representation as to the accuracy of the location of or the existence or non-existence of any underground utility, pipe, or structure within the limits of this project. This note applies to all sheets.

If work is to be done on a State Highway, a permit must be obtained from the State of California, Division of Highways, 120 South Spring Street.

COUNTY OF LOS ANGELES, CALIFORNIA

Approved, William J. Fox, County Engineer
 Approved, A. M. Rasm
 CHIEF ENGR. CO. SAN. DIST. NO. 15
A. M. Rasm
 District Engineer
 Checked by: *R. H. ...* 7/2/55
 Office of County Engineer, Reg. C. E. No. 7860

P.C. 3541
 PAGE 1

21,520

TRACT No. 21469
 P.C. 3541

RC 3541

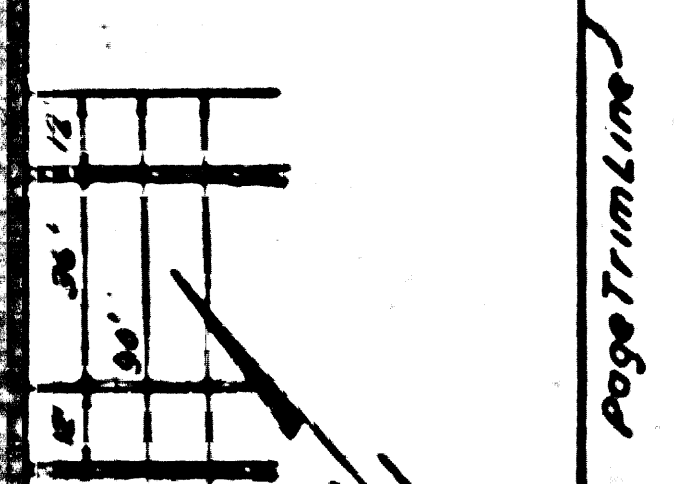
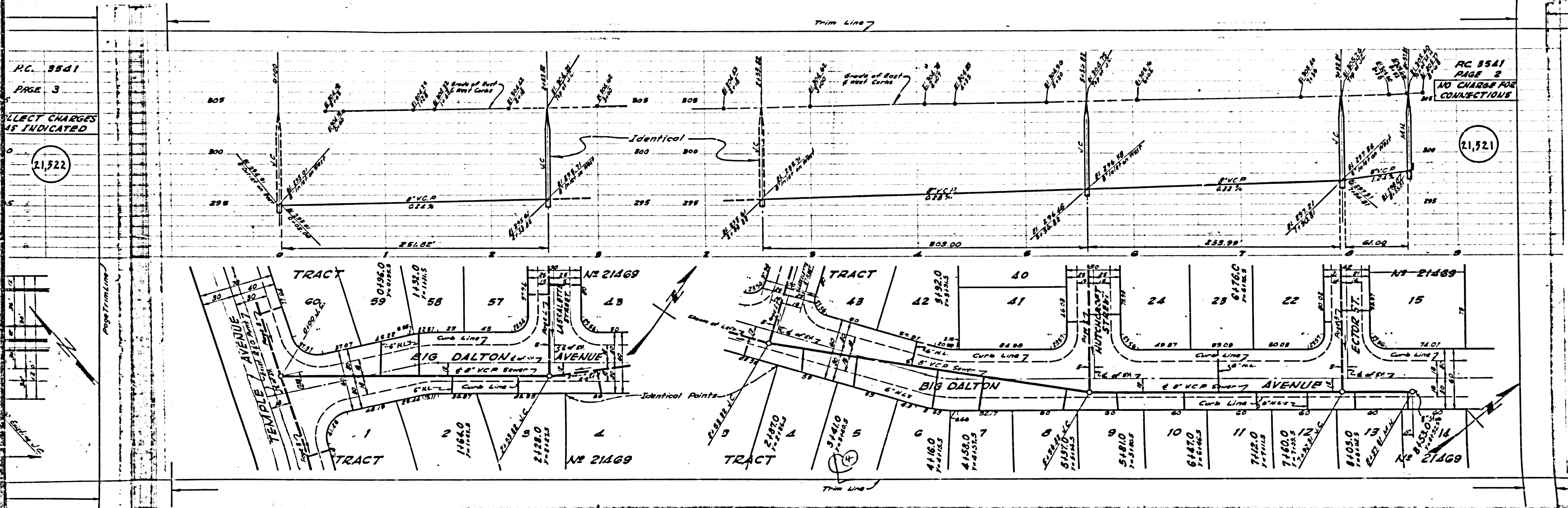
PAGE 3

COLLECT CHARGES AS INDICATED

21,522

RC 3541
PAGE 2
NO CHARGE FOR CONNECTIONS

21,521



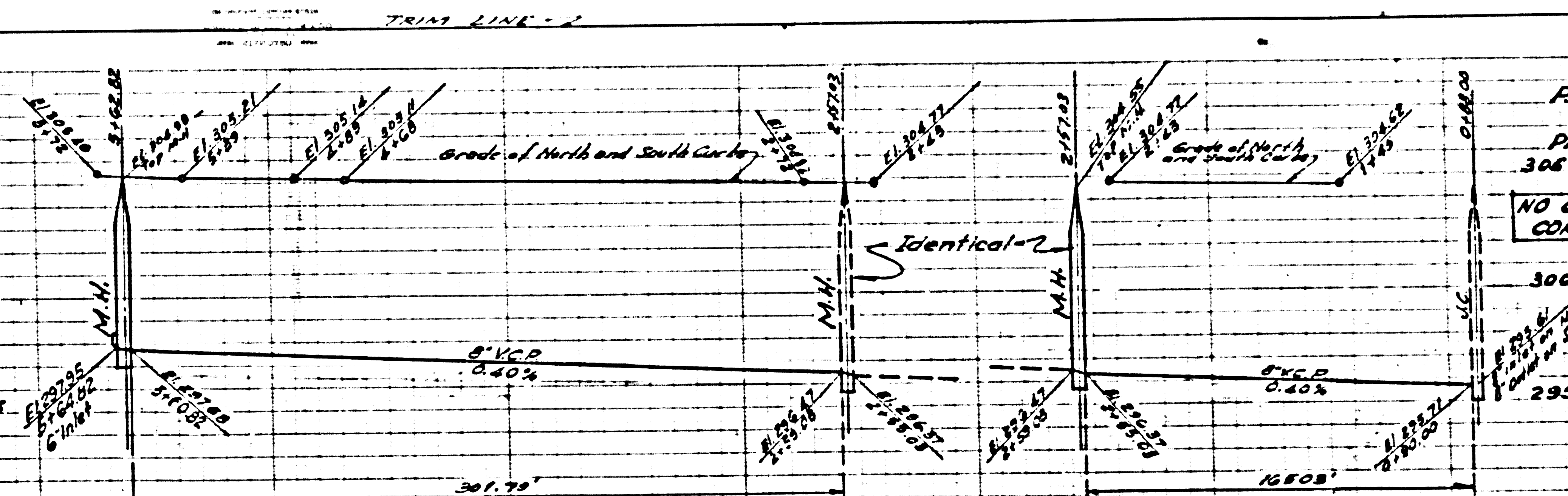
Page Trim Line

Trim Line

3541

ENRGE FOR CONNECTIONS

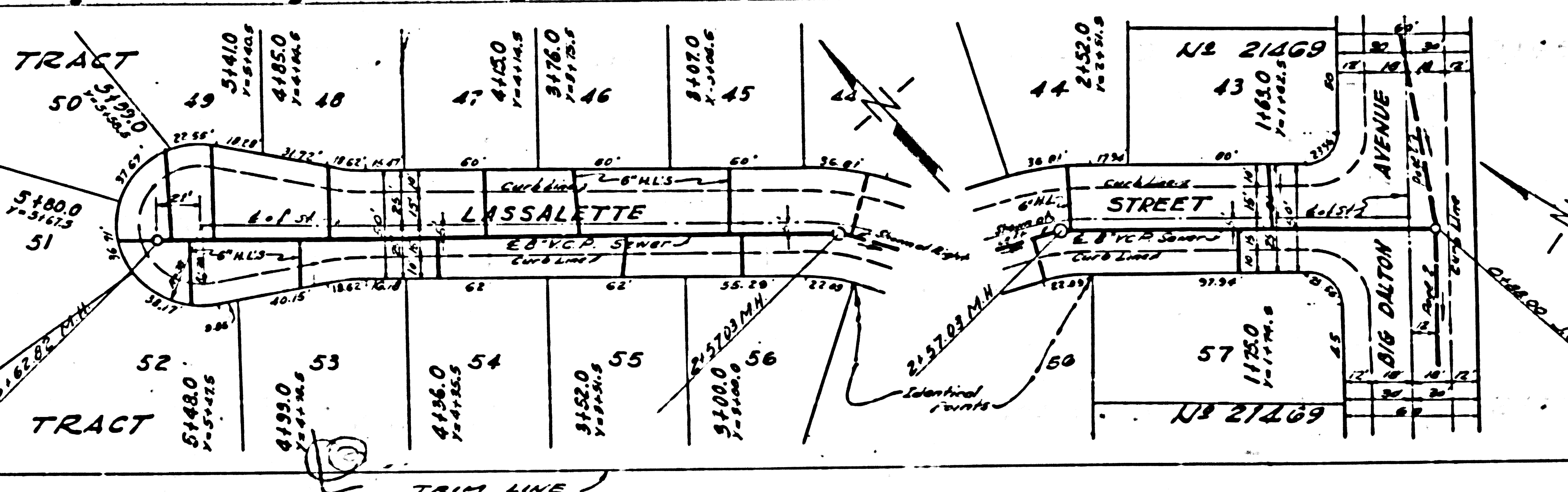
21,524



PG. 3541
PAGE 4
NO CHARGE FOR CONNECTIONS

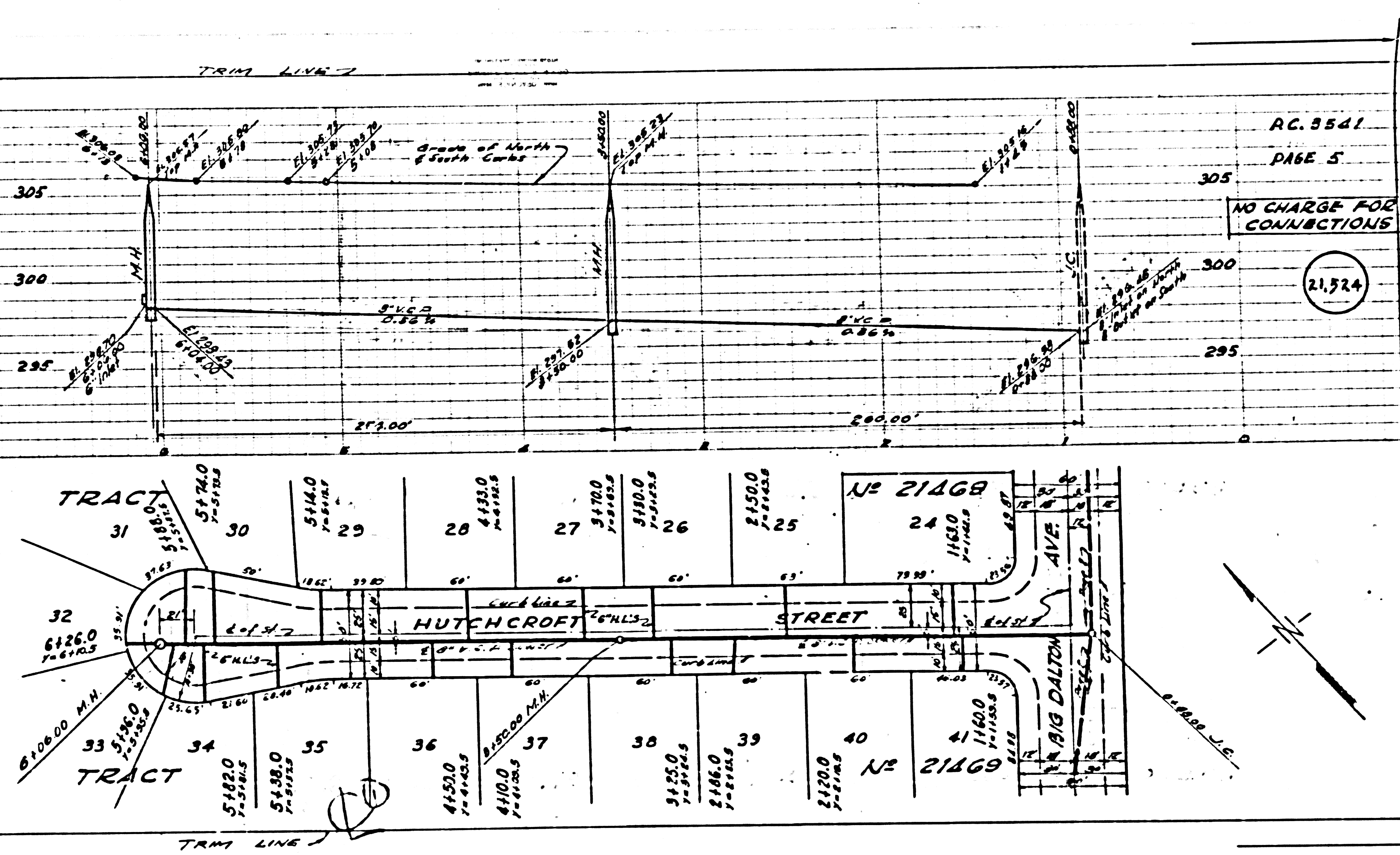
21,523

(B)



TRIM LINE

PC 3541



PC 3541
PAGE 5
NO CHARGE FOR CONNECTIONS
21,524