

A.M. RAWN - Chief Engineer
 County Sanitation Dist. No. 2
 Approved: *[Signature]*
 District Engineer

WILLIAM J. FOX -
 County Engineer
 Approved: *[Signature]*
 Sanitation Engineer

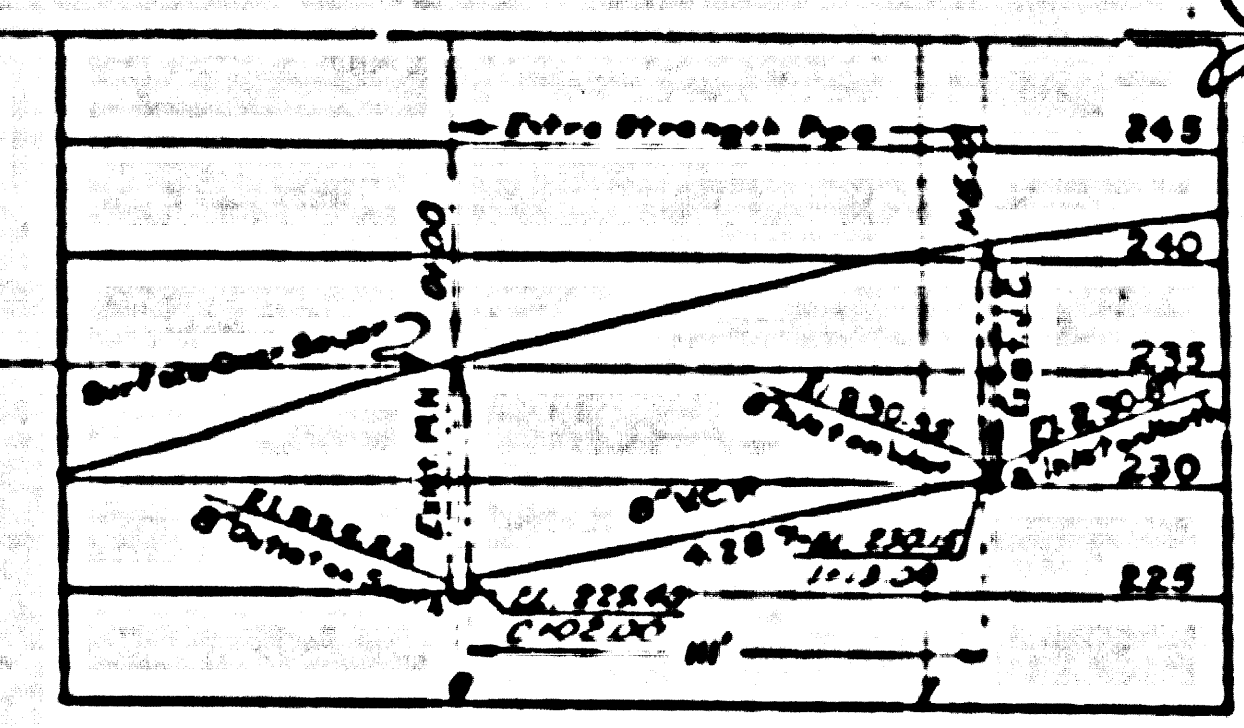
LA 167	C 73	116
--------	------	-----

JANUARY 23 1956

[Signature]

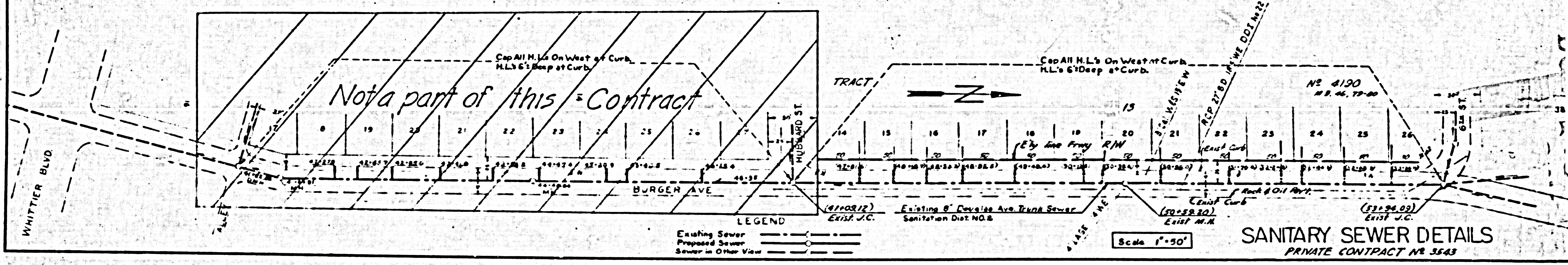
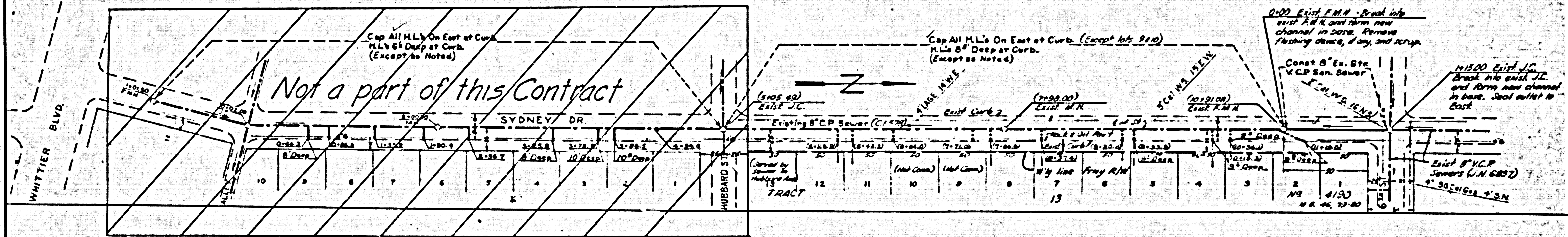
M.A. 35-53 ELEV 209.66
 Set L&T, E. curb Ford Blvd. 187' N. Hubbard
 St. 20' E. & Ford in front of Market = 670

B.M.A. 36-53 ELEV 255.03
 Set L&T, E. curb Humphrey Ave 25' S. of
 BCR on SE corner 5' W. & Humphrey



Scale
 Horiz. 1"=20'
 Vert. 1"=4'

24588
 P.C. 3543



Design Dept.	166
Designed	J.G. 634
Drawn	M.H. 634
Checked	M.N. 355
Supervised by	B. WILLIAMSON
Right of Way	F.A. 20

73

LEGEND
 Existing Sewer ———
 Proposed Sewer - - - -
 Sewer in Other View - - - -

Scale 1"=50'

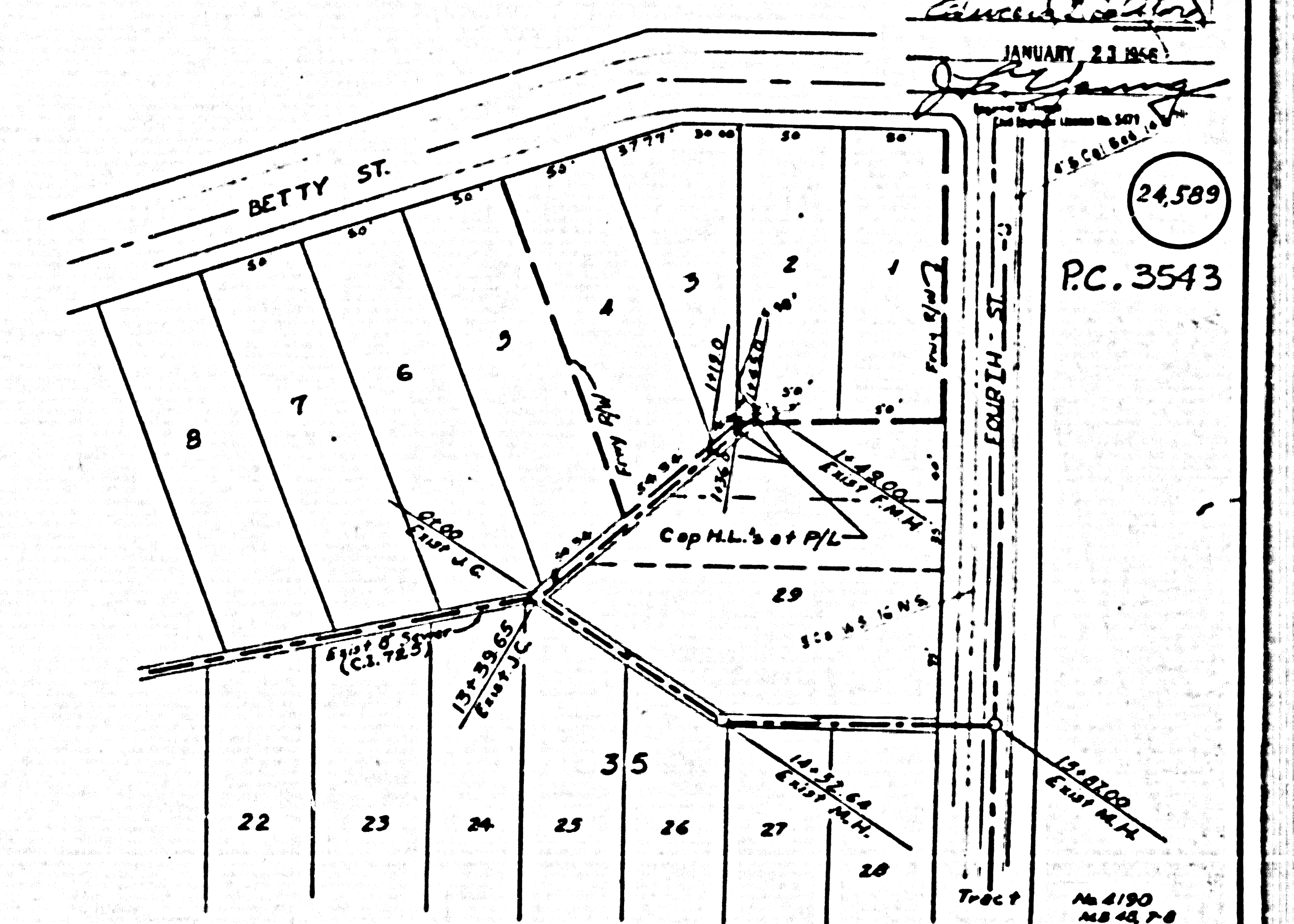
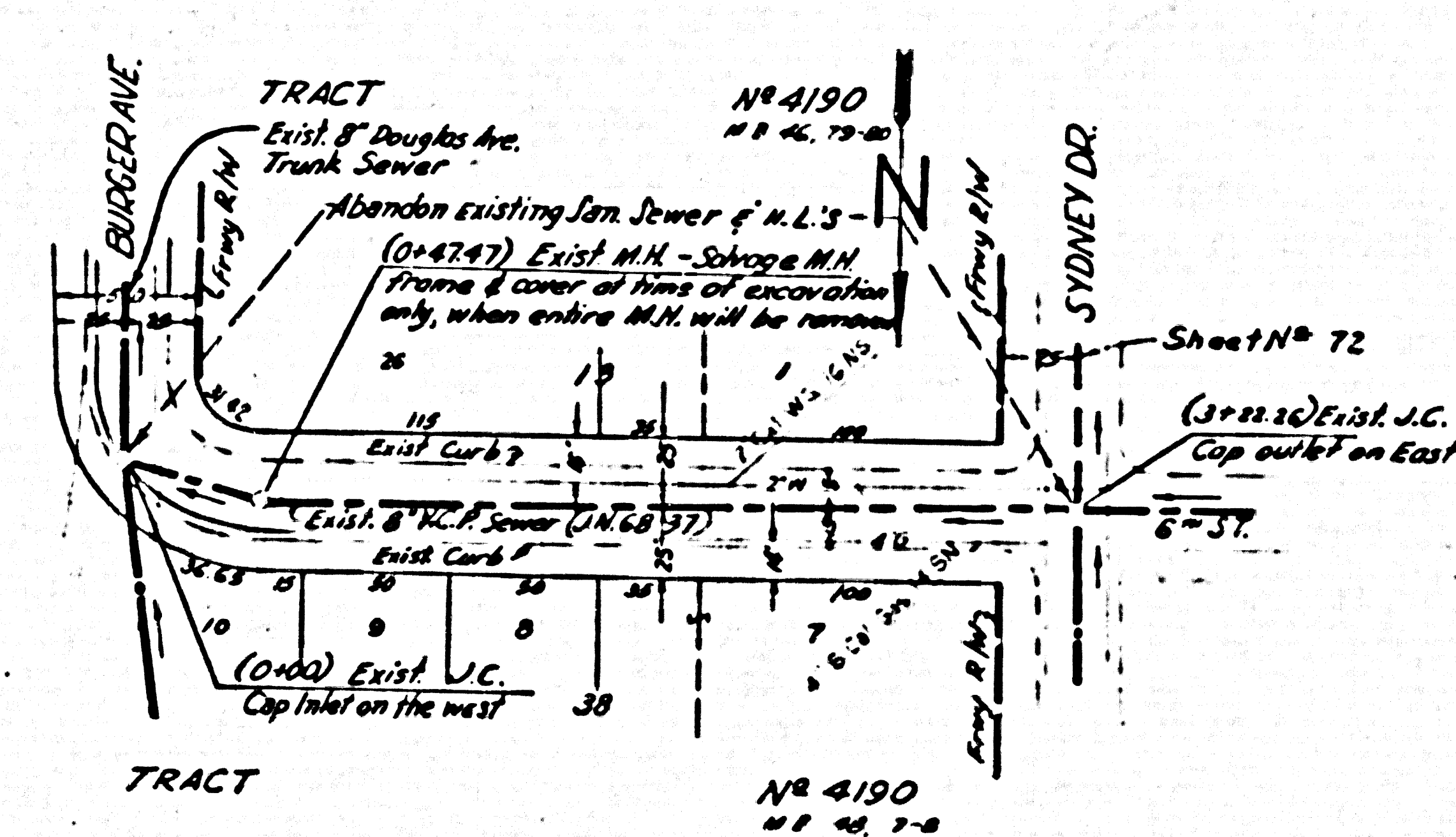
SANITARY SEWER DETAILS
 PRIVATE CONTRACT NO. 3543

A.M. RANNEY - Chief Engineer
 County Sanitation District No. 2
 Approved: *[Signature]*
 Sanitation Engineer

WILLIAM J. FOX - County Engineer
 Approved: *[Signature]*
 Sanitation Engineer

VI	LA	167	C	74	116
----	----	-----	---	----	-----

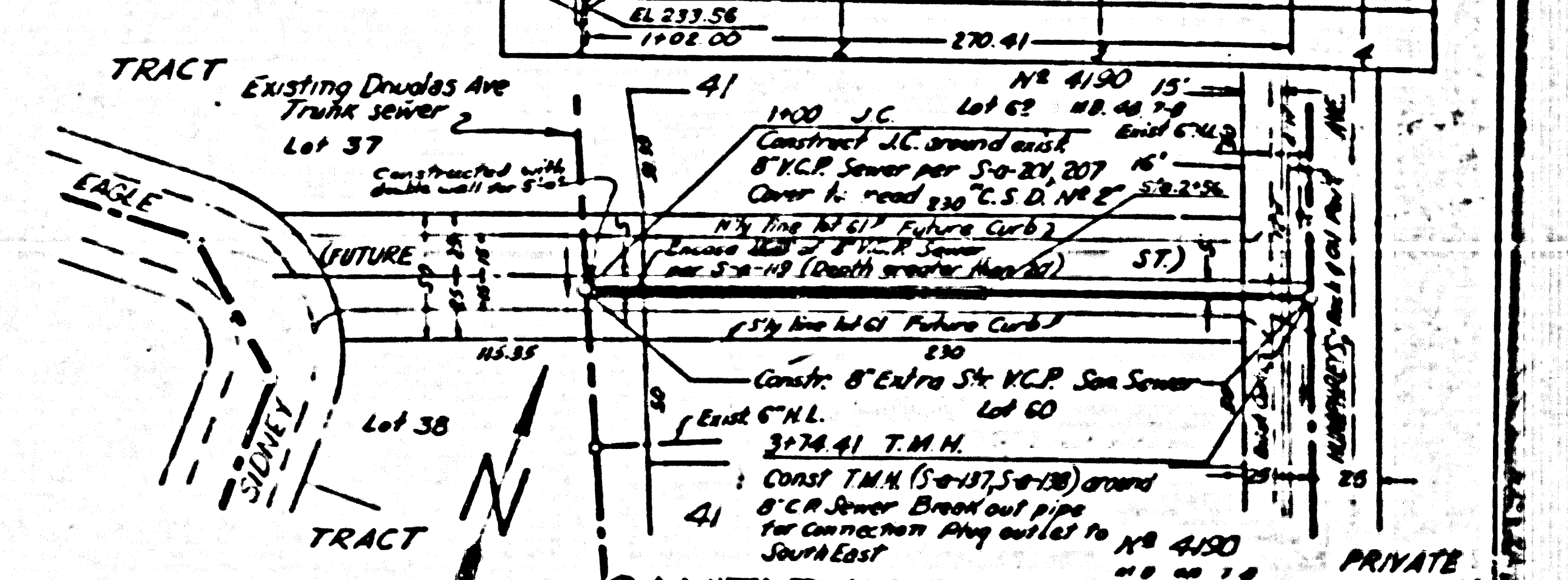
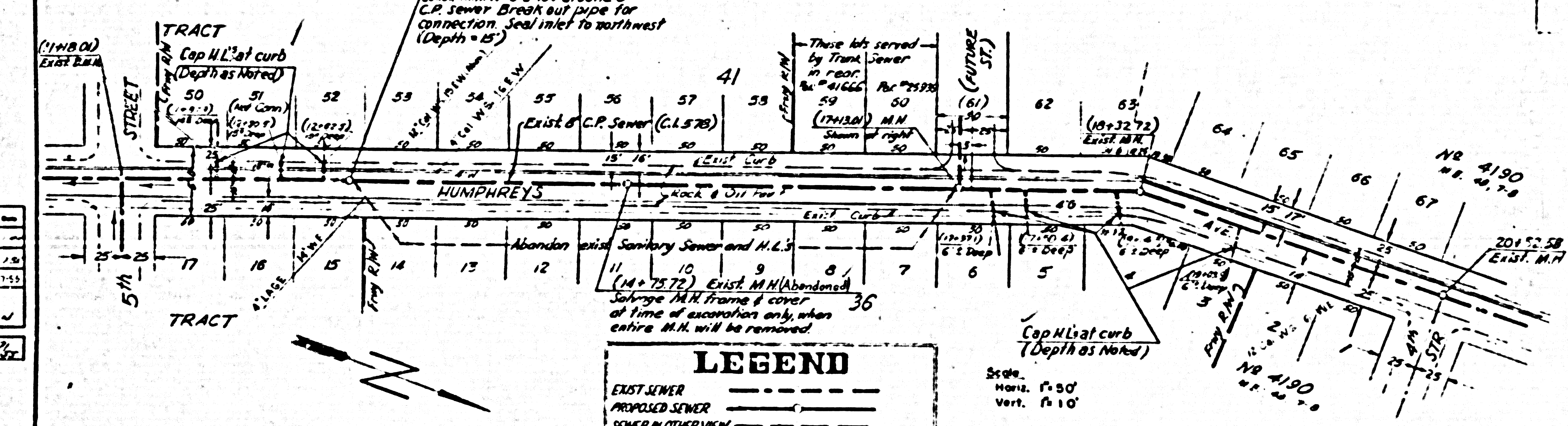
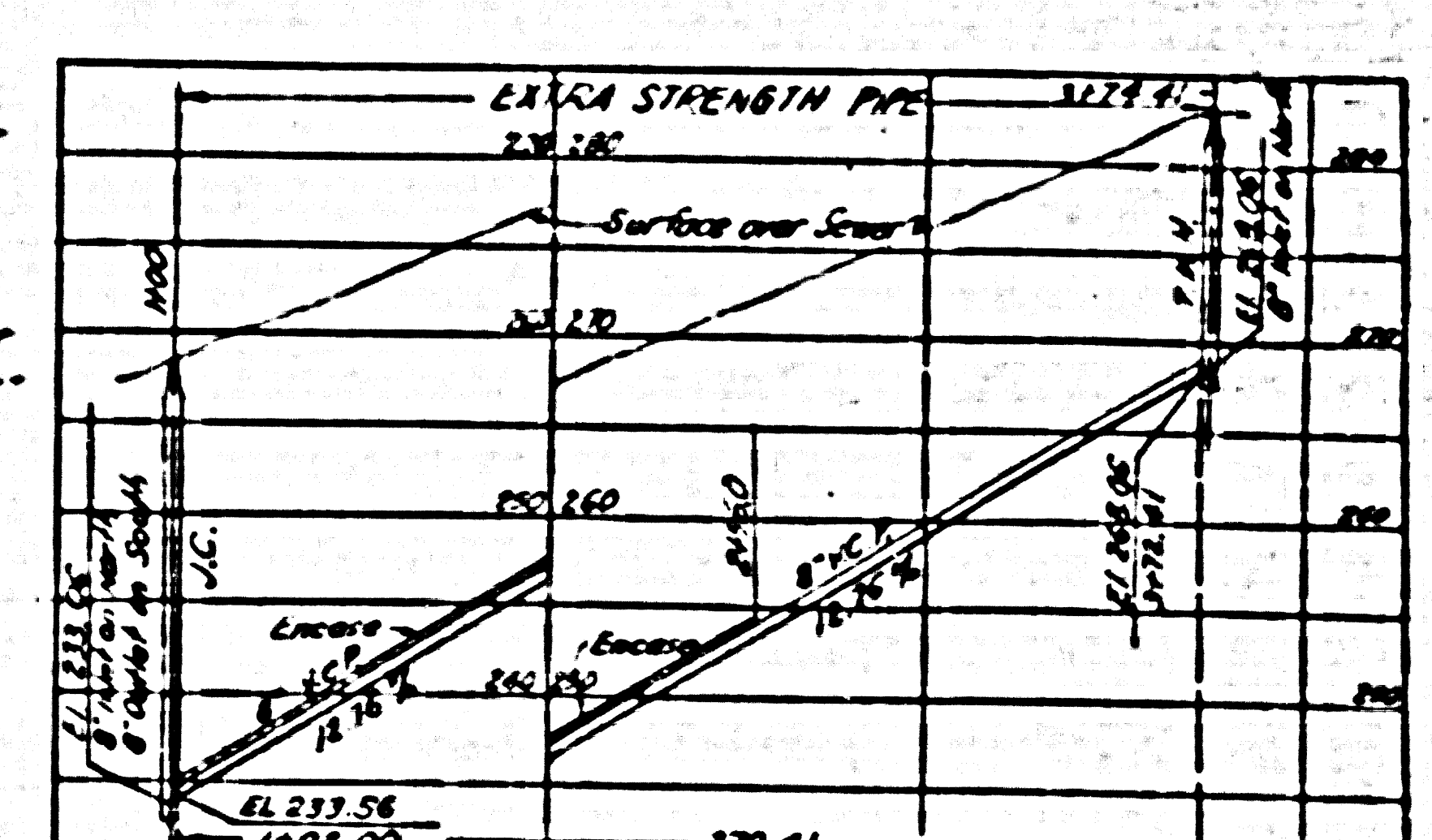
January 23, 1941



BM A 30-55 ELEV 255.05
 Set 1/4\"/>

BM A 37A ELEV 261.75
 Set 1/4\"/>

BM A 37-52
 Set 1/4\"/>



Design Dept.	101	101
Designed by	W.M.	1/10
Checked	W.M.	1/15
Supervised by	W.M.	1/15
Right of Way	1/15	1/15

LEGEND
 EXIST. SEWER
 PROPOSED SEWER
 SEWER IN OTHER VIEW

Scale:
 Horiz. 1" = 50'
 Vert. 1" = 10'

SANITARY SEWER DETAILS
 PRIVATE CONTRACT NO. 3543

DATE	STATE	FEDERAL PROJECT NO.	SCALE	DATE
CALIF				1955

WILLIAM J. FOX
County Engineer
Approved: *D.P. Collins*
Sanitation Engineer

A.M. ROWN Chief Engineer
County Sanitation Dist. No. 2
Approved: *J. J. ...*
Office Engineer

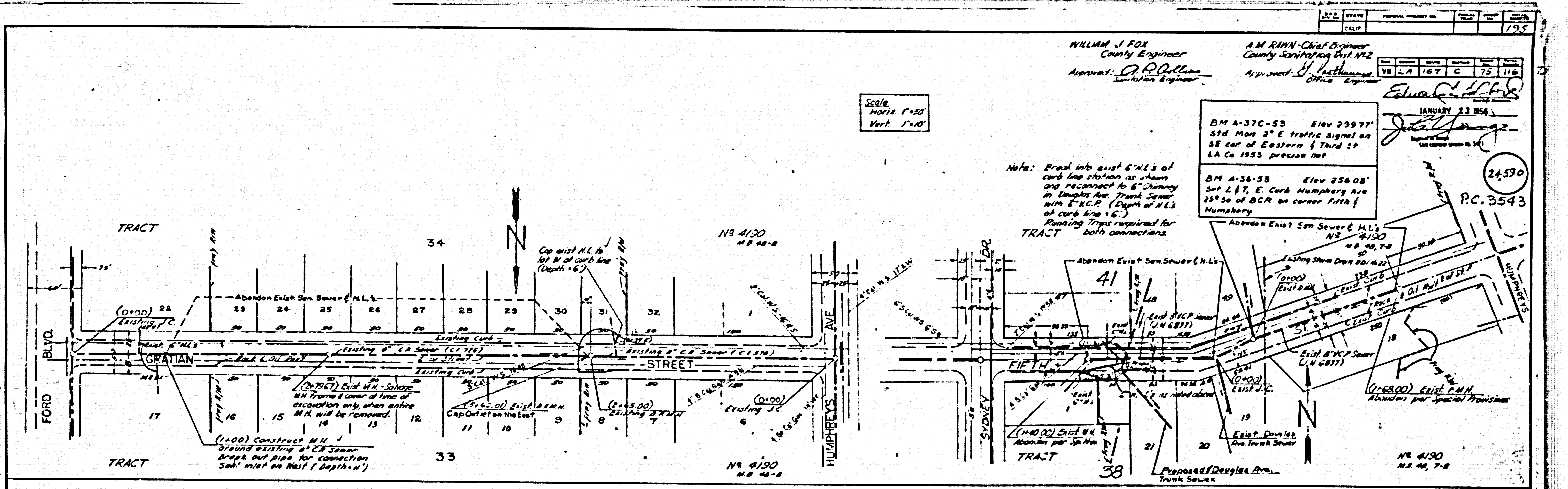
BM A-37C-53 Elev 299.77'
Std Man 2" E traffic signal on
SE cor of Eastern & Third St
LA Co 1933 precise net

BM A-36-53 Elev 256.08'
Set L & T, E. Curb Humphrey Ave
25' So of BCR on corner Fifth &
Humphrey

JANUARY 23 1955
J. J. ...
24,590
P.C. 3543

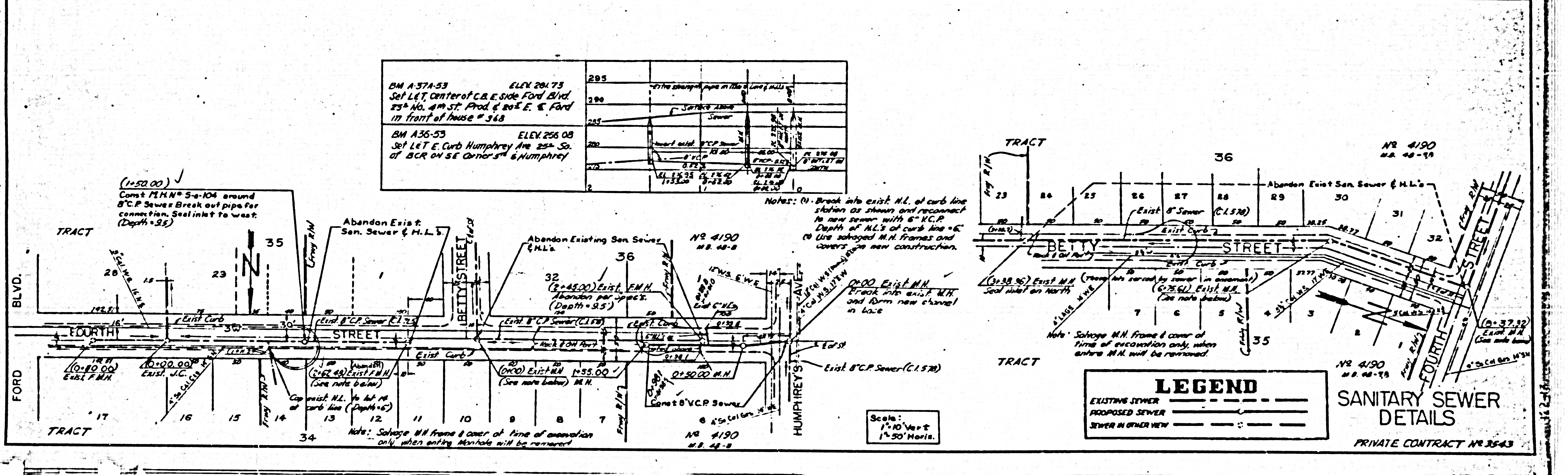
Scale
Horiz 1"=50'
Vert 1"=10'

Note: Break into exist. M.L.'s of curb line station as shown and reconnect to 8" dummy in Douglas Ave. Trunk Sewer with 6" K.C.P. (Depth of M.L.'s of curb line = 6"). Running Trips required for both connections.



BM A-37A-53 ELEV 294.73 Set LET center of C.E. side Ford Blvd 25' No. 4th St. Prod. E. 20' E. of Ford in front of house # 348	295 290 285 280 275 270 265 260 255 250 245 240 235 230 225 220 215 210 205 200 195 190 185 180 175 170 165 160 155 150 145 140 135 130 125 120 115 110 105 100 95 90 85 80 75 70 65 60 55 50 45 40 35 30 25 20 15 10 5 0	
BM A-36-53 ELEV 256.08 Set LET E. Curb Humphrey Ave 25' So. of BCR on SE corner 5th & Humphrey		

Notes: (1) Break into exist. M.L. of curb line station as shown and reconnect to new sewer with 6" K.C.P. Depth of M.L.'s of curb line = 6". (2) Use salvaged M.H. frames and covers on new construction.



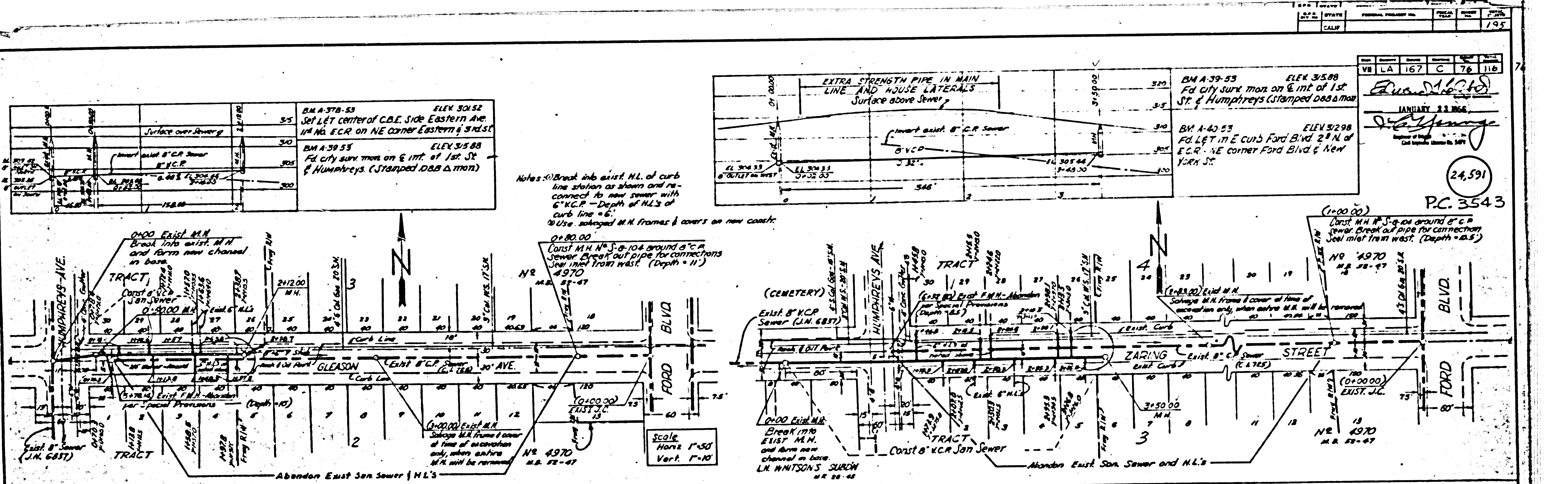
LEGEND
EXISTING SEWER
PROPOSED SEWER
SEWER IN OTHER VIEW

SANITARY SEWER DETAILS
PRIVATE CONTRACT NO. 3543

Scale
1"=50' Horiz
1"=10' Vert

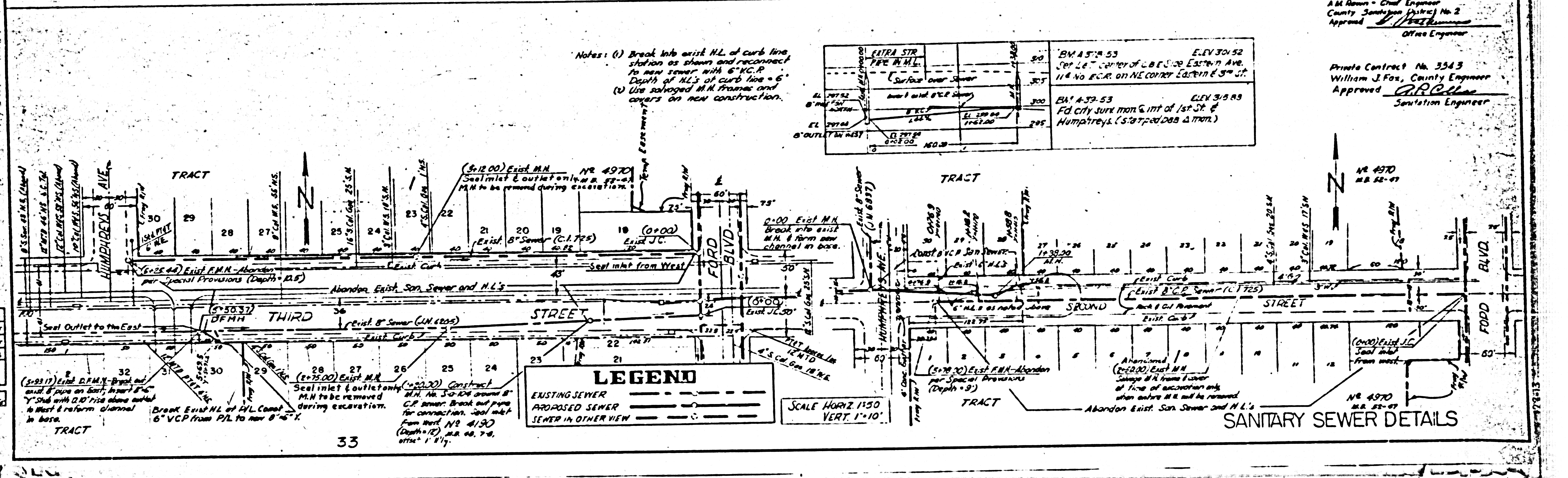
Design Dept.	MA 354
Drawn	JG 103
Checked	BB 793
Supervised by	B. WILLIAMSON
Right of Way	

75



DATE	195
CALL	
NO.	167
C.	76
11B	

Approved: *William J. Fox*
 JANUARY 22 1956
 William J. Fox, County Engineer
 Seal
 24,591
 P.C. 3543



DATE	195
CALL	
NO.	167
C.	76
11B	

Approved: *William J. Fox*
 Private Contract No. 3543
 William J. Fox, County Engineer
 Approved: *William J. Fox*
 Sanitation Engineer

LEGEND

EXISTING SEWER ———

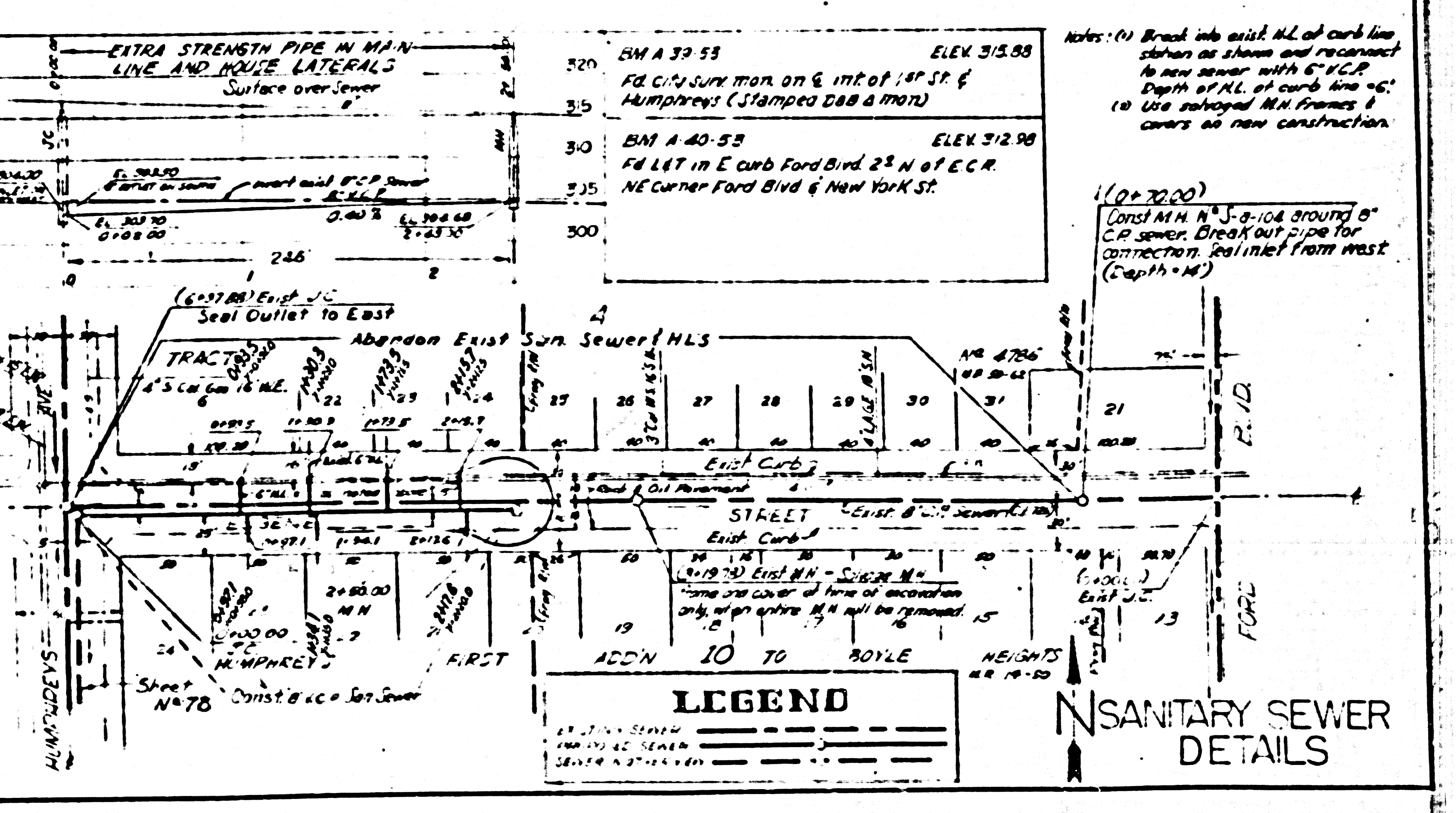
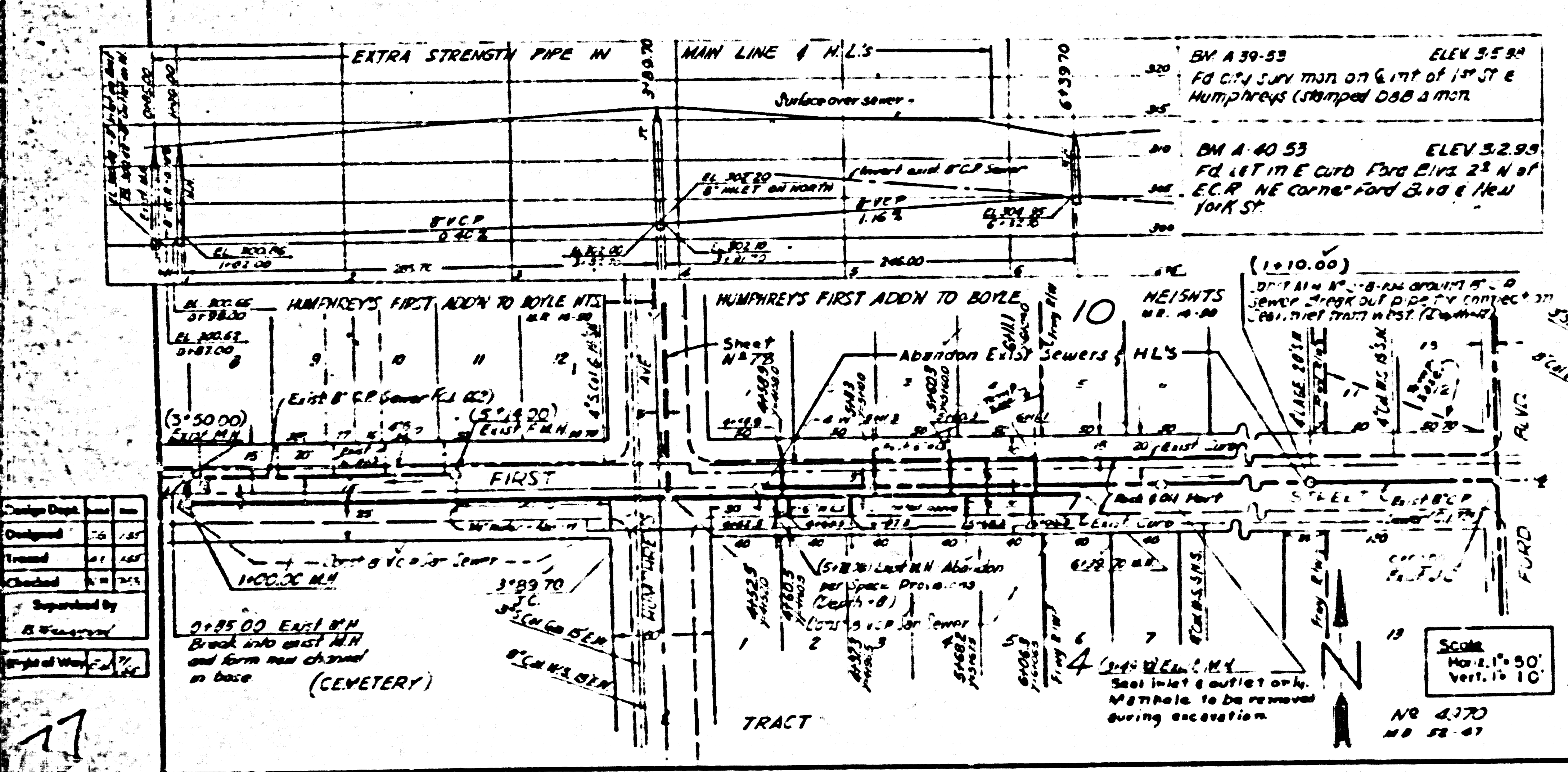
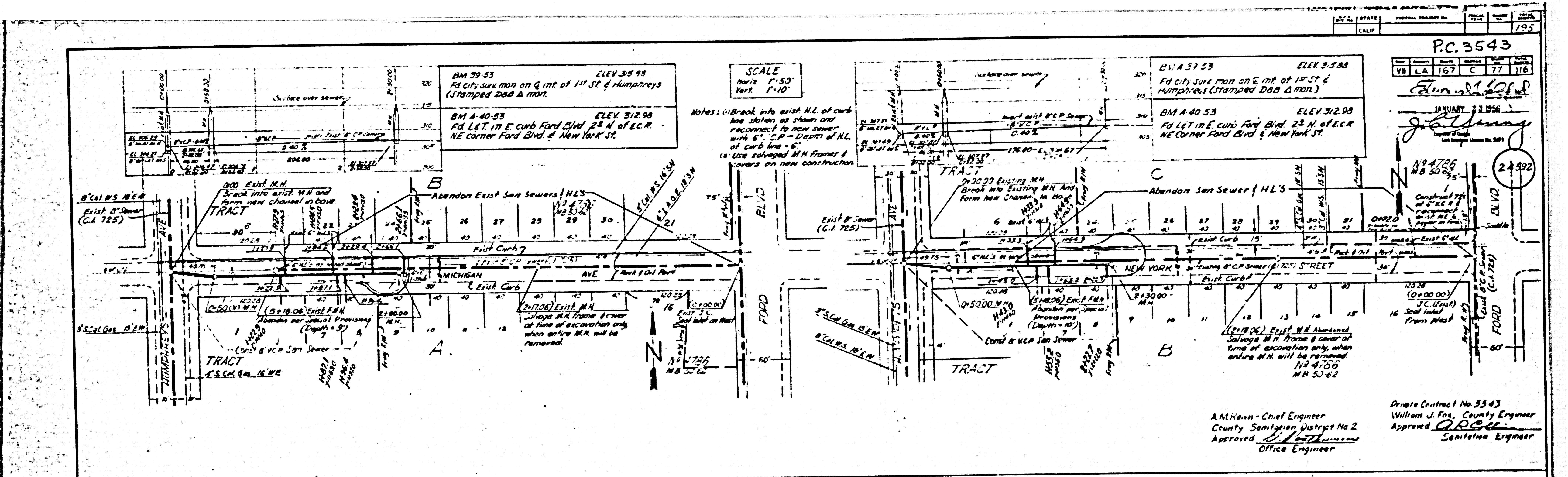
PROPOSED SEWER ———

SEWER IN OTHER VIEW - - - -

16

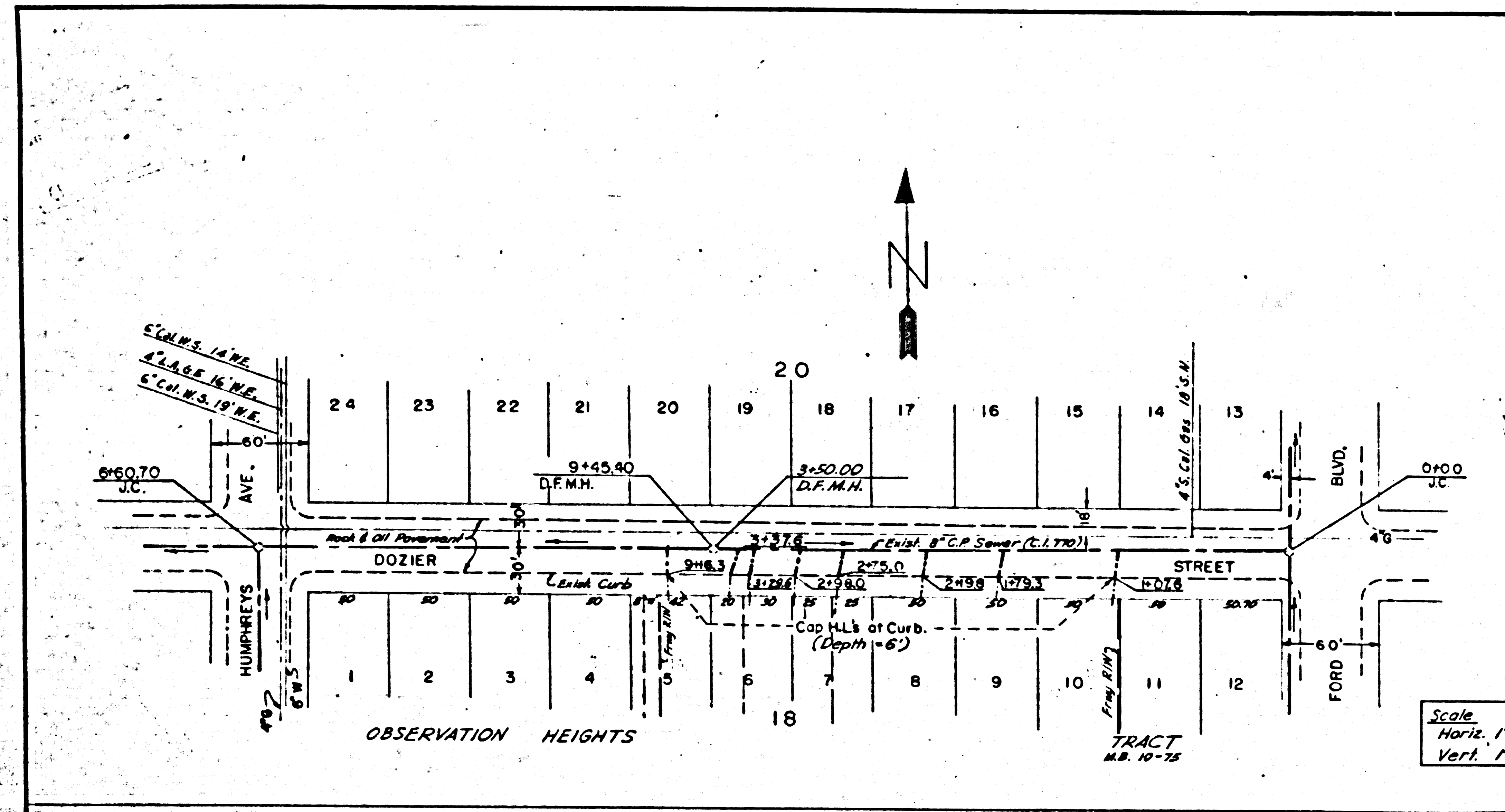
33

SANITARY SEWER DETAILS

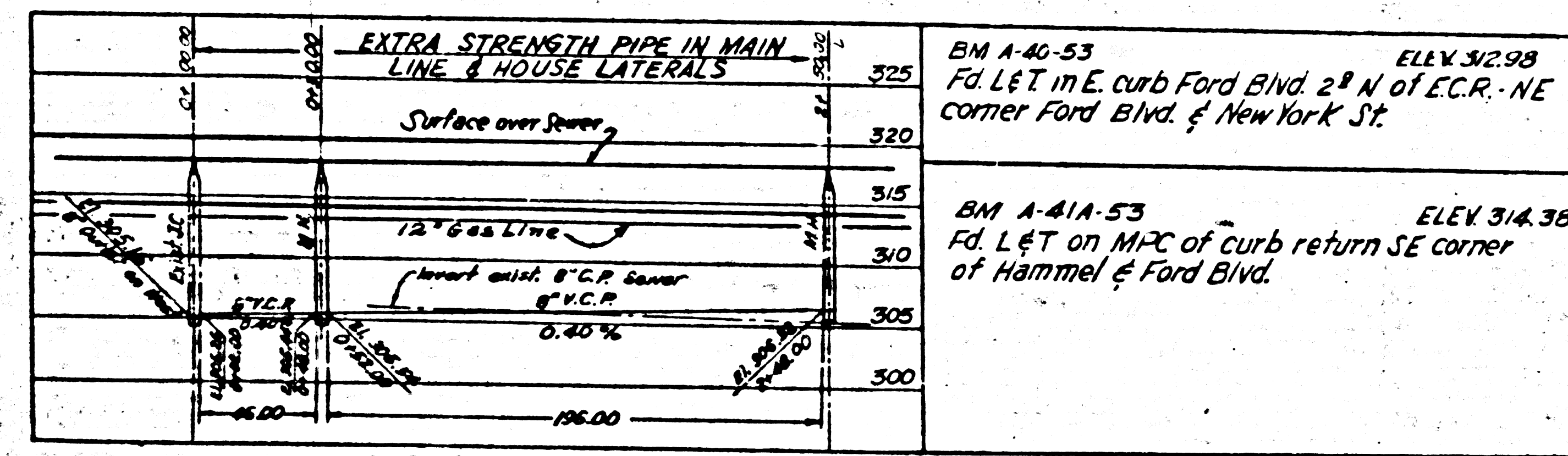


Private Contract No 3543
 William J. Fox County Engineer
 Approved A.P. Collins
 Sanitation Engineer
 A.W. Rawlin Chief Engineer
 County Sanitation District No 2
 Approved J. P. ...
 Office Engineer

LA 167 C 70 116
 JANUARY 21 1956
 24593
 P.C. 3543

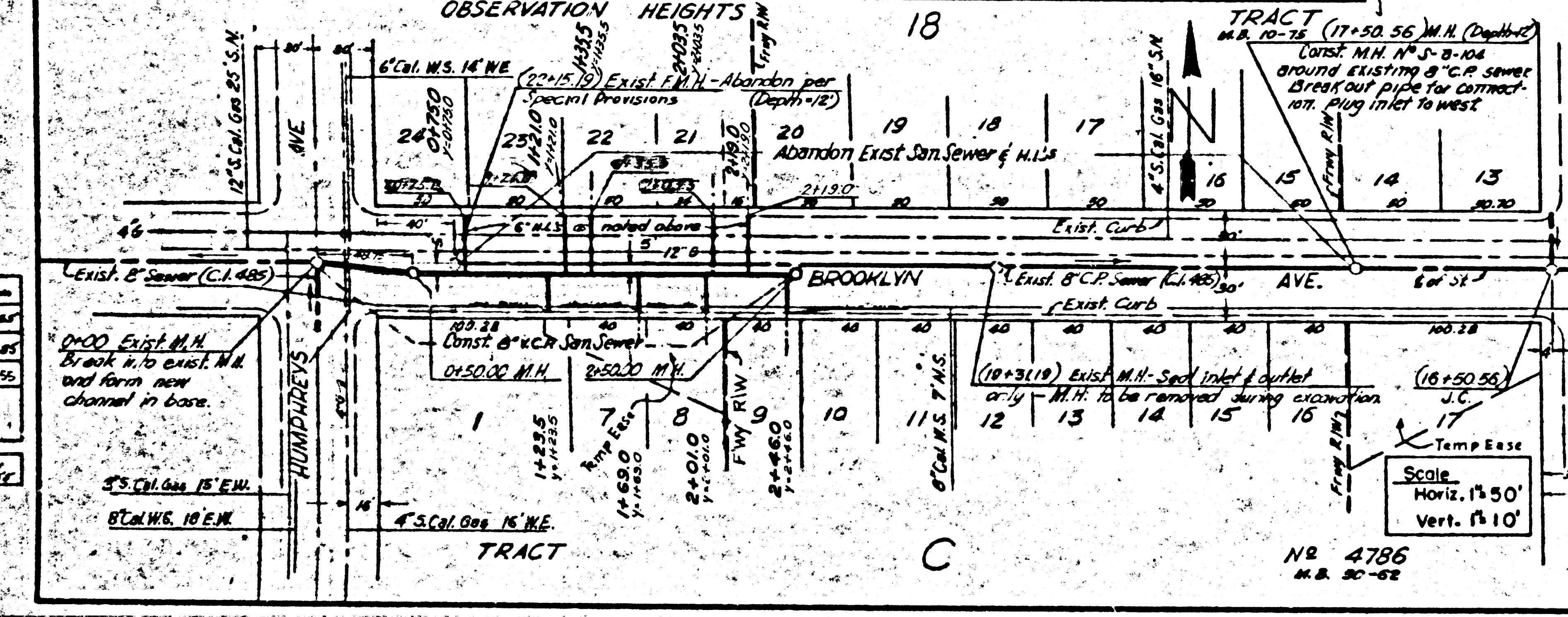
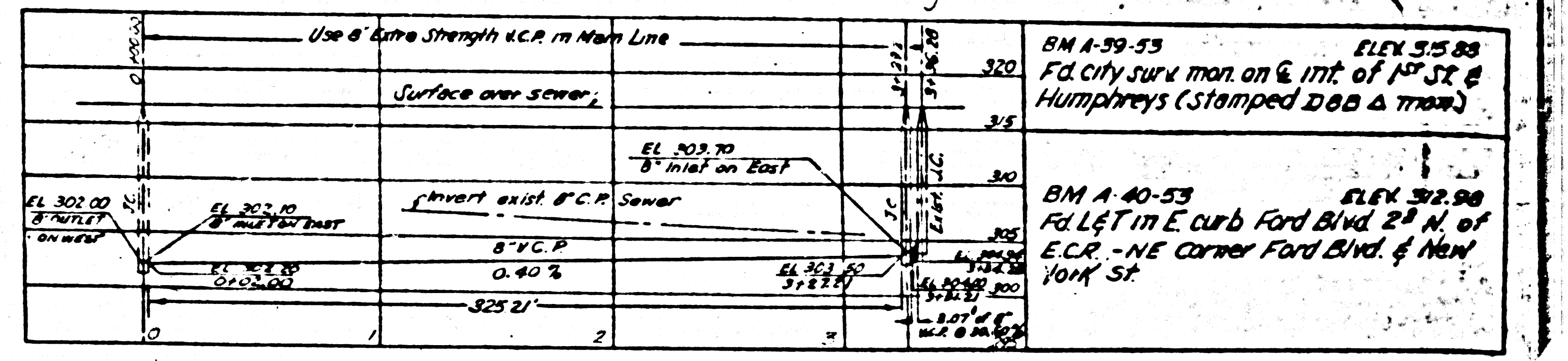


Note: This project not to include North side of Dozier St.
 Scale
 Horiz. 1"=50'
 Vert. 1"=10'



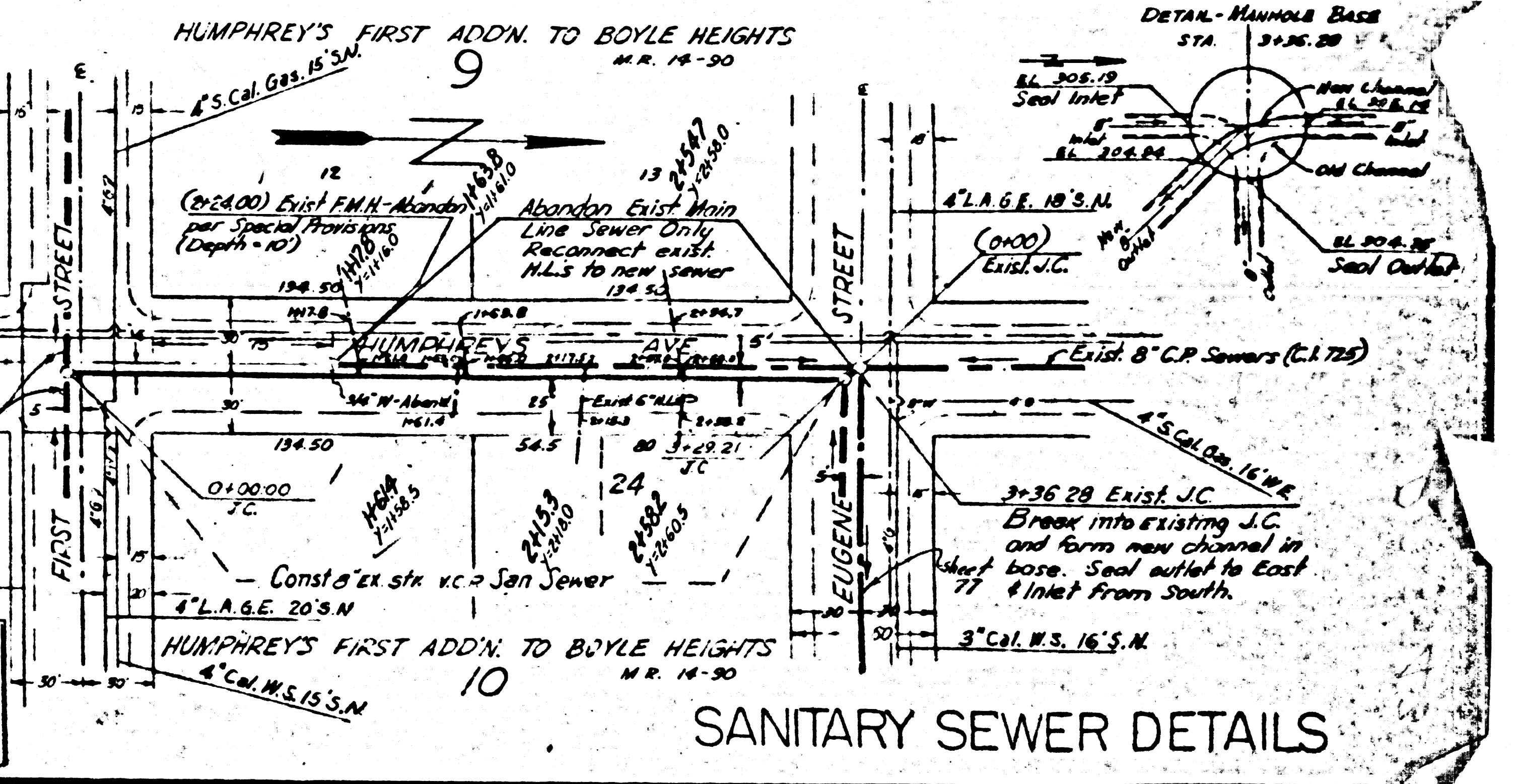
BM A-40-53 ELEV 314.38
 Fd. L&T on MPC of curb return SE corner of Hammel & Ford Blvd.

Notes: (1) Break into exist. M.L. of curb line station as shown and reconnect to new sewer with 6" K.C.P. Depth of M.L.'s of Curb Line = 6". (2) Use salvaged M.H. frames & covers on new construction.



Scale
 Horiz. 1"=50'
 Vert. 1"=10'

LEGEND
 EXISTING SEWER
 PROPOSED SEWER
 SEWER IN OTHER VIEW



SANITARY SEWER DETAILS

18