

P.C. 3550
PAGE 2

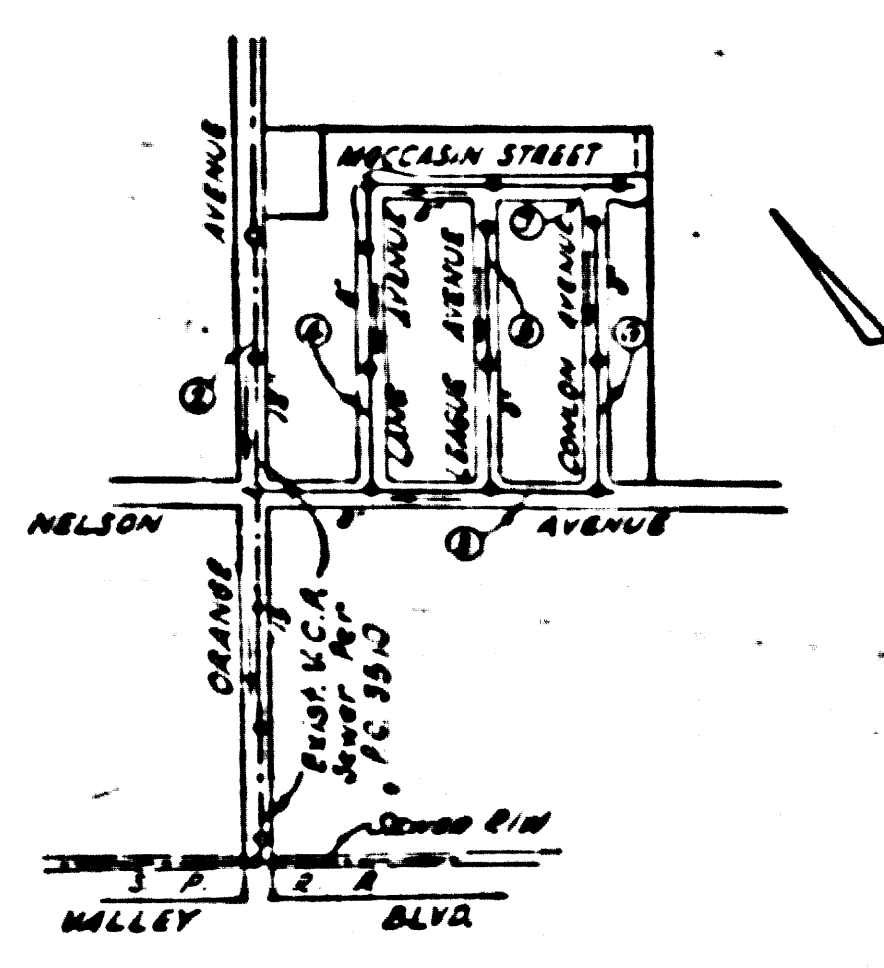
CONNECTION CHARGES
AS INDICATED

22,354

BENCH MARK
L & D. N.E. side of stone pipe 225'
South & 135' West of intersection
Duarte Avenue & Nelson Avenue
S.E. 1019
Elevation 897.155 Adj. 1952

PUENTE Bldg. Dist. No. 2

- NOTE:**
Provide stakes on the property lines or property lines produced at right angles to the sewer line at the center line of each manhole.
No representative of the County Engineer will survey or layout any portion of the work. The owner or his authorized representative shall furnish the County Engineer with grade sheets and stations for all house laterals and Y branches and shall provide stakes for them at their proper locations with stationing plainly marked. Any change in location shall be requested in writing by the owner or his representative.
No revisions shall be made in these plans without the approval of the County Engineer.
1. Use standard manhole frames and covers, S-a-117.
 2. Use standard strength pipe except as noted.
 3. Use cement mortar for all vitrified clay pipe joints.
 4. Resurface all trench within paved area to meet L.A. County Road Dept. or Calif. State Highway Dept. requirements in accordance with permit.
 5. Encase four feet of sewer at points of interference with poles, S-a-119.
 6. House laterals to be constructed with inverts at property line..... feet below curb grade except as noted.
 7. All structures shall be brick sewer structures, S-a-104.
 8. For allowable leakage test, use Formula No. Spec's, Sec. 51.
 9. Manhole tops in unimproved Rights-of-Way to be 6" above finish grade.



CONNECTION CHARGES
AS INDICATED
L. Curtis 2-10-56

INDEX MAP
SCALE: 1"=600'
TRACT NO. 21752
P.C. 3550

Checked 4-6-56 *W. E. ...*

PROFILE, ALIGNMENT AND GRADE OF
SANITARY SEWERS
TO BE CONSTRUCTED IN

TRACT NO. 21752

PRIVATE CONTRACT NO. 3550
W.S. 30

SHEET 1 OF 2 SHEETS
JUNE, 1955
PREPARED BY THE OFFICE OF
EDWARD N. FRISIUS
Edward N. Frisius
FOR LEGEND SEE PLAN NO. S-a-64

NOTE:
Grades to which this improvement is to be constructed are shown on plans and profiles. Grade points for top of curbs, center line of streets, or center line of alleys are shown by circles on profiles. At all points between designated points the grade shall be established so as to conform to a straight line drawn by even said designated points.
Elevations are in feet above U.S.C. & G.S. See *Level Datum of 1929*.
This drawing and the data hereon are hereby made a part of the specifications.
Work shall be constructed according to specifications on file in the office of the County Engineer and shall be prosecuted only in the presence of the County Engineer.
Before work can be started, the contractor must obtain a permit to excavate in County streets from the L.A. County Road Dept., 108 W. 2nd St., and make a deposit with the County Engineer, Room 318, 253 South Broadway, sufficient to cover the cost of construction inspection and record plans.
Approval of this plan by the County of Los Angeles does not constitute a representation as to the accuracy of the location of or the existence or non-existence of any underground utility, pipe, or structure within the limits of this project. This note applies to all sheets.
If work is to be done in a State Highway, a permit must be obtained from the State of California, Division of Highways, 120 South Spring Street.

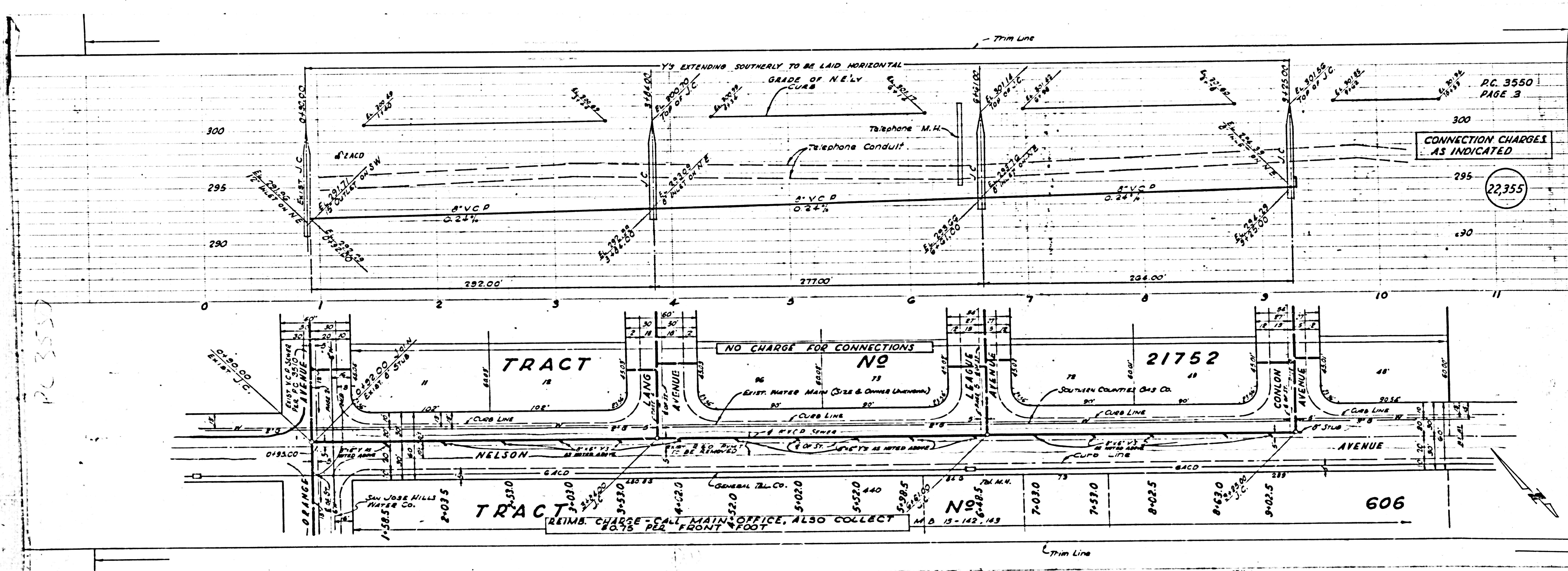
COUNTY OF LOS ANGELES, CALIFORNIA
Approved, John A. Lemke, County Engineer
A. P. Collins
Approved, A. M. Rows
A. M. Rows
Office Engineer
2-10-56
Office of County Engineer, Dep. C & H No. 2ALC

22,353

TRACT NO. 21752

P.C. 3550

1



P.C. 3550
PAGE 3

CONNECTION CHARGES
AS INDICATED

22,355

NO CHARGE FOR CONNECTIONS

21752

TRACT

606

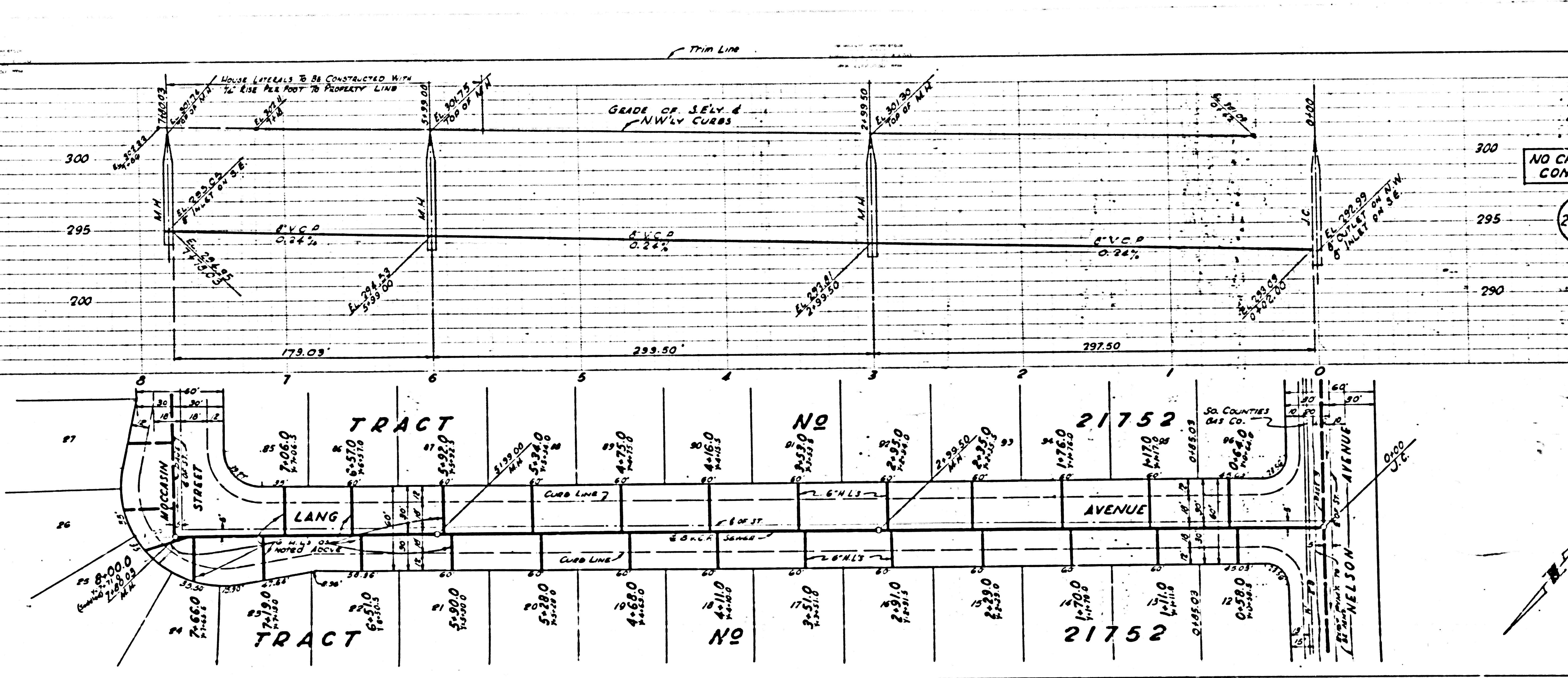
REIMB. CHARGE CALL MAIN OFFICE, ALSO COLLECT FRONT FOOT

P.C. 3550

PC 3550
PAGE 5

NO CHARGE FOR
CONNECTIONS

2357



PC 3550
PAGE 4

NO CHARGE FOR
CONNECTIONS

22356

TRACT NO 21752

PC 3550
PAGE 5

2

