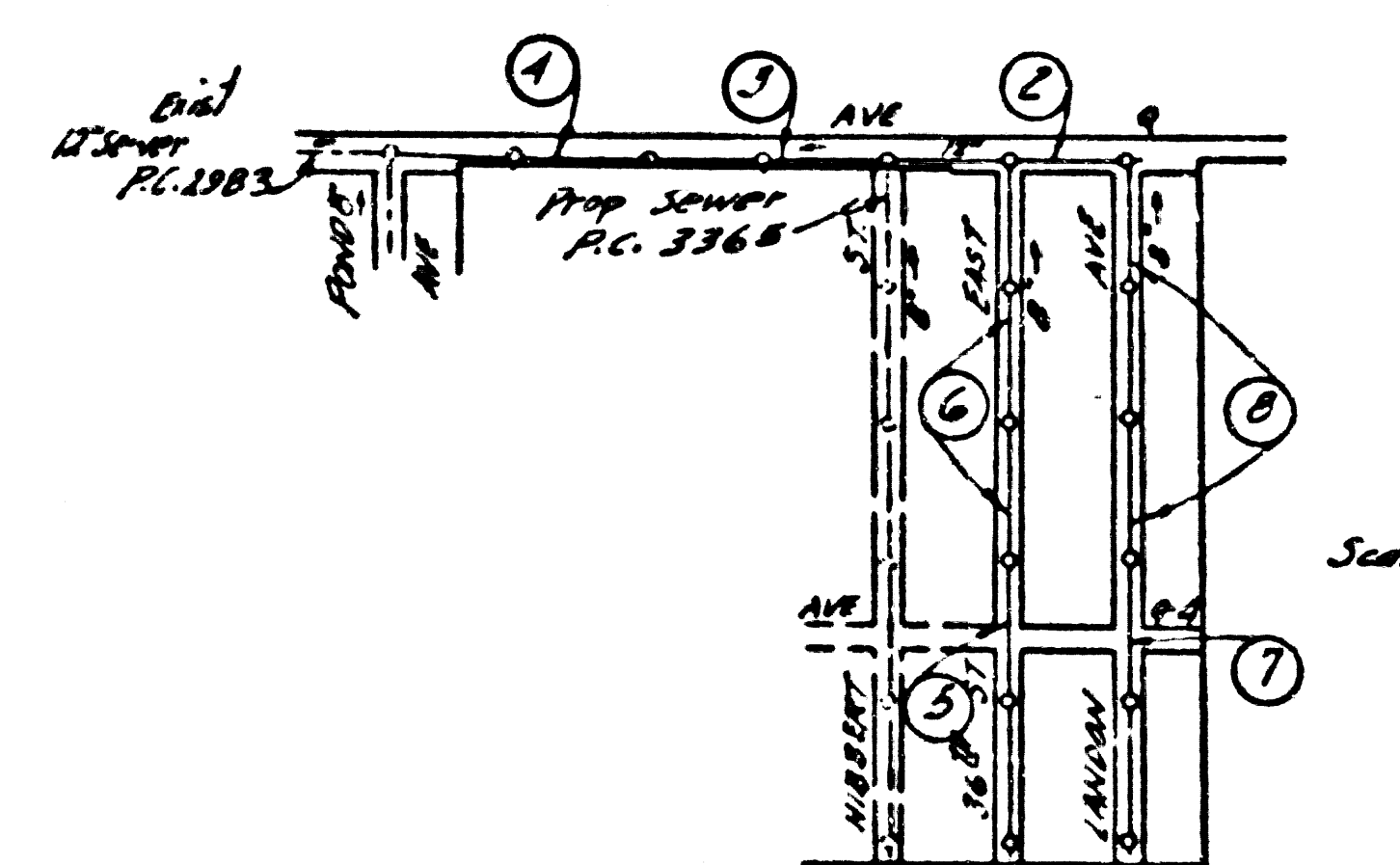


B.M. U.S. 2168 E1. 2593.61 About 28 mi. along ST. Hwy  
 2 1/2 mi. from S.P.R.R. Sta. at Palmdale. At a pt. W. crossing S.W. of  
 the E. of Hwy 6 B.M. W. of corner 1491.51 A B.S.G.S. st. disk  
 stamped L.S. 26, 1929 & set in top of conc. post. 1946 U.S.C.  
 P.C.S. Adj. B. 2598.519. Sub B.M. from St. between to be an U.S.G.S. datum st. disk.

**NOTE: PALMDALE BLDG. DIST. N° 8P**

- Provide stakes on the property lines or property lines produced at right angles to the sewer line at the center line of each manhole.
- No representative of the County Engineer will survey or layout any portion of the work.
- The owner or his authorized representative shall furnish the County Engineer with grade sheets and stations for all house laterals and Y branches and shall provide stakes for them at their proper locations with stationing plainly marked. Any change in location shall be requested in writing by the owner or his representative.
- No revisions shall be made in these plans without the approval of the County Engineer.
1. Use standard manhole frames and covers, S-a-117.
  2. Use standard strength pipe except as noted.
  3. Use cement mortar for all vitrified clay pipe joints.
  4. Resurface all trench within paved area to meet L.A. County Road Dept. or California State Highway Dept. requirements in accordance with permit.
  5. Excavate four feet of sewer at points of interference with poles, T-a-119.
  6. House laterals to be constructed with inverts at property line \_\_\_\_\_ feet below curb grade except as noted.
  7. All structures shall be brick sewer structures, S-a-104.
  8. For allowable leakage test, use Formula No. \_\_\_\_\_, Spec's., Sec. 51.
  9. Ball all pipe joints with 4" cement mortar that are within 20' of all property lines.

SHEETS	PAGES
1	1-5
2	6-8



**NO CHARGE FOR CONNECTIONS**  
*L. L. Latta 7-7-55*

INDEX MAP  
 TRACT N° 19969  
 P.C. 3551

*Accepted 11-9-55 [Signature]*

PROFILE, ALIGNMENT AND GRADE OF  
**SANITARY SEWERS**  
 TO BE CONSTRUCTED IN

P.C. 3551  
 Page 1

**TRACT N° 19969**

21,752

PRIVATE CONTRACT NO. 3551  
 W. S. 65  
 TWO SHEETS EIGHT PAGES  
 Scale: VERT. 1"=40'  
 HORIZ. 1"=40' JUNE 1955  
 PREPARED IN THE OFFICES OF

**R.L. STUCKEY CO.**  
*R. L. Stuckey*  
 6067  
 FOR LEGEND SEE PLAN NO. S-a-64

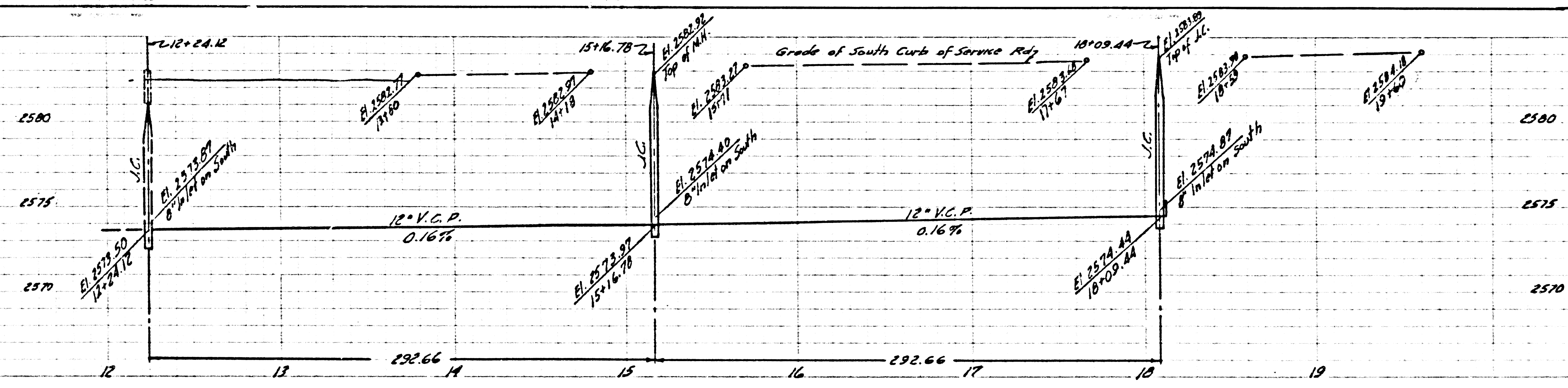
**NOTE:**  
 Grades to which this improvement is to be constructed are shown on plans and profiles. Grade points for top of curbs, center line of streets, or center line of alleys are shown by circles on profiles. At all points between designated points the grade shall be established so as to conform to a straight line drawn between said designated points.  
 Elevations are in feet above U.S.G.S. datum or mean sea level.  
 This drawing and the data hereon are hereby made a part of the specifications.  
 Work shall be constructed according to specifications on file in the office of the County Engineer and shall be prosecuted only in the presence of the County Engineer.  
 Before work can be started, the contractor must obtain a permit to excavate in County streets from the L.A. County Road Dept., 108 W. 2nd St. and make a deposit with the County Engineer, Room 318, 283 S. Broadway, sufficient to cover the cost of construction inspection and record plans.  
 Approval of this plan by the County of Los Angeles does not constitute a representation as to the accuracy of the location of or the existence or non-existence of any underground utility, pipe, or structure within the limits of this project. This note applies to all sheets.  
 If work is to be done in a State Highway, a permit must be obtained from the State of California, Division of Highways, 120 South Spring Street.

COUNTY OF LOS ANGELES, CALIFORNIA  
 Approved, William J. Fox, County Engineer  
 Approved, A. M. Rosen  
 CHIEF ENGINEER SAN DIST. NO. 20  
 By *A. P. Collins* District Engineer  
 By *R. L. Stuckey* Office Engineer  
 Checked by *W. K. Duda 8-3-55*  
 Office of County Engineer, Box C. E. No. 3464

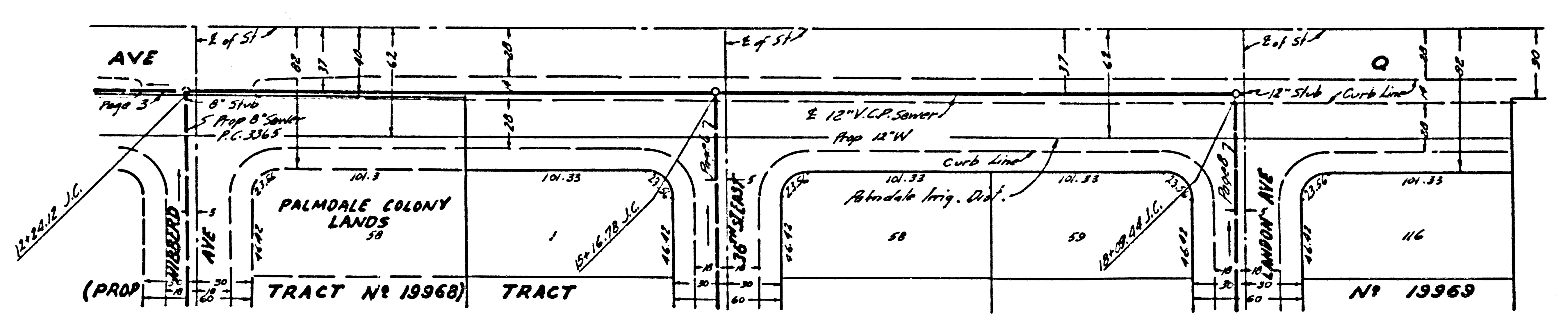
TRACT N° 19969  
 P.C. 3551

*Trim Line*





P.C. 3551  
 Page 2  
 21,753  
 NO CHARGE FOR CONNECTIONS



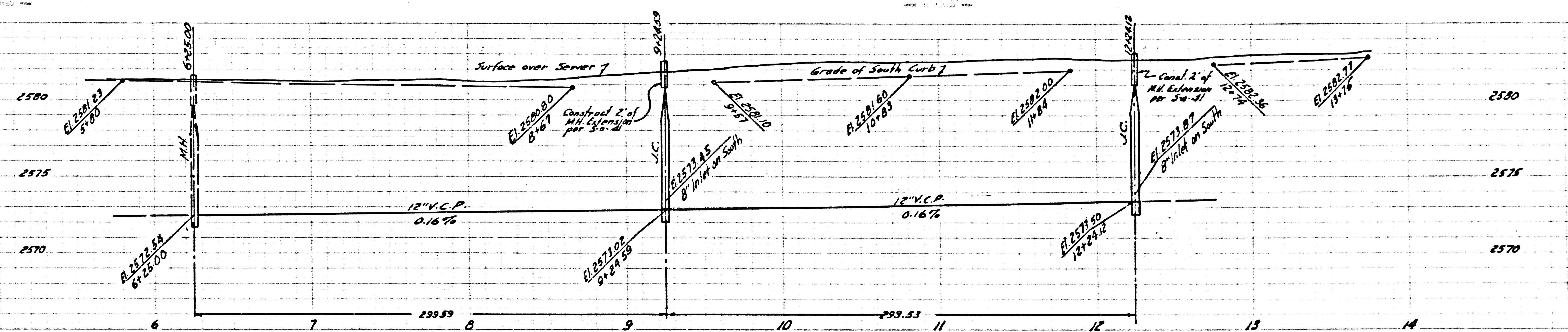


P.C. 3551  
Page 4

NO CHARGE FOR  
CONNECTIONS

21,755

2580  
2575  
2570

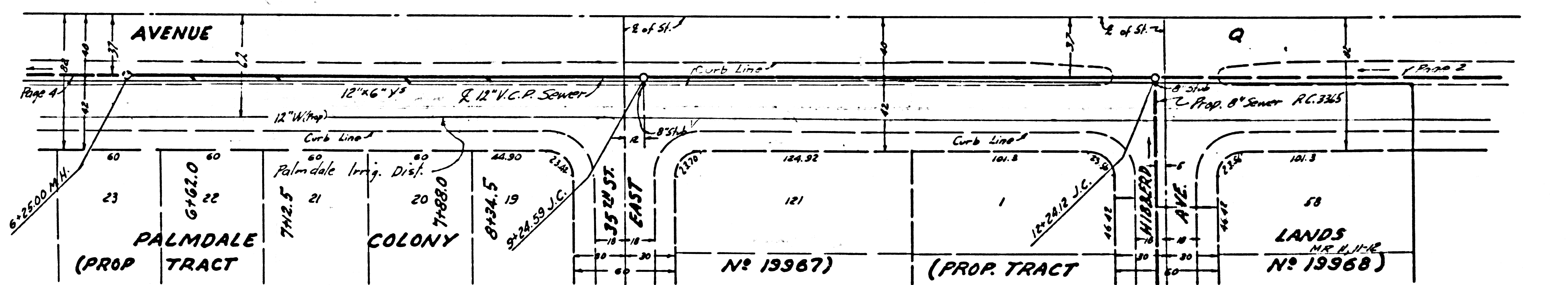


P.C. 3551  
Page 3

21,754

NO CHARGE FOR  
CONNECTIONS

2580  
2575  
2570











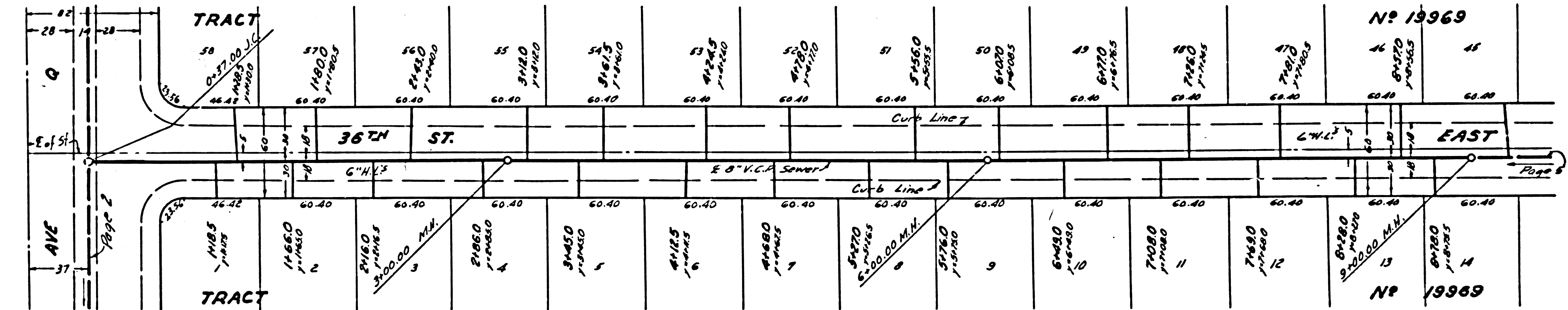
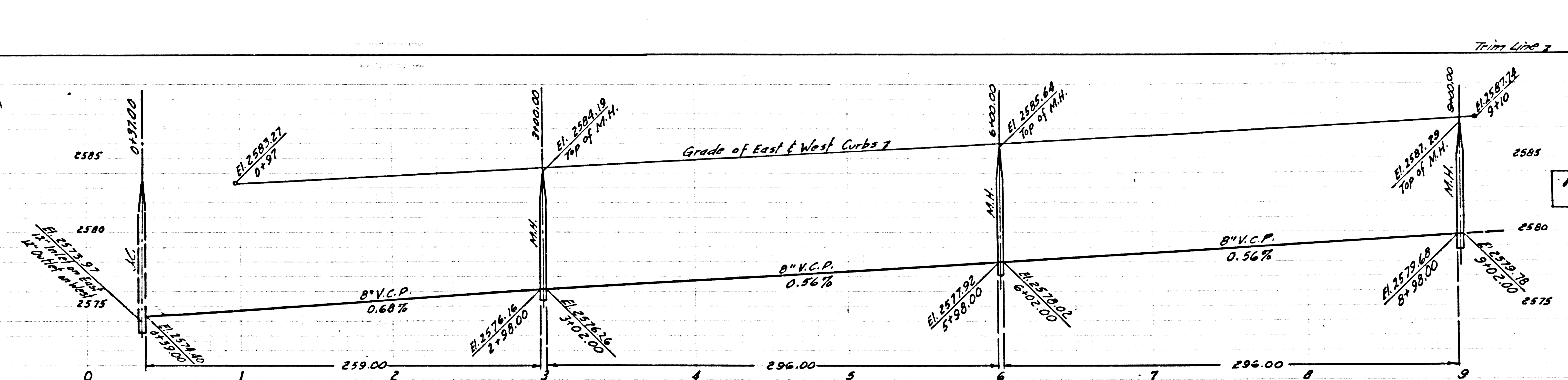


NO CHARGE FOR CONNECTIONS

NO CHARGE FOR CONNECTIONS

21,758

21,757

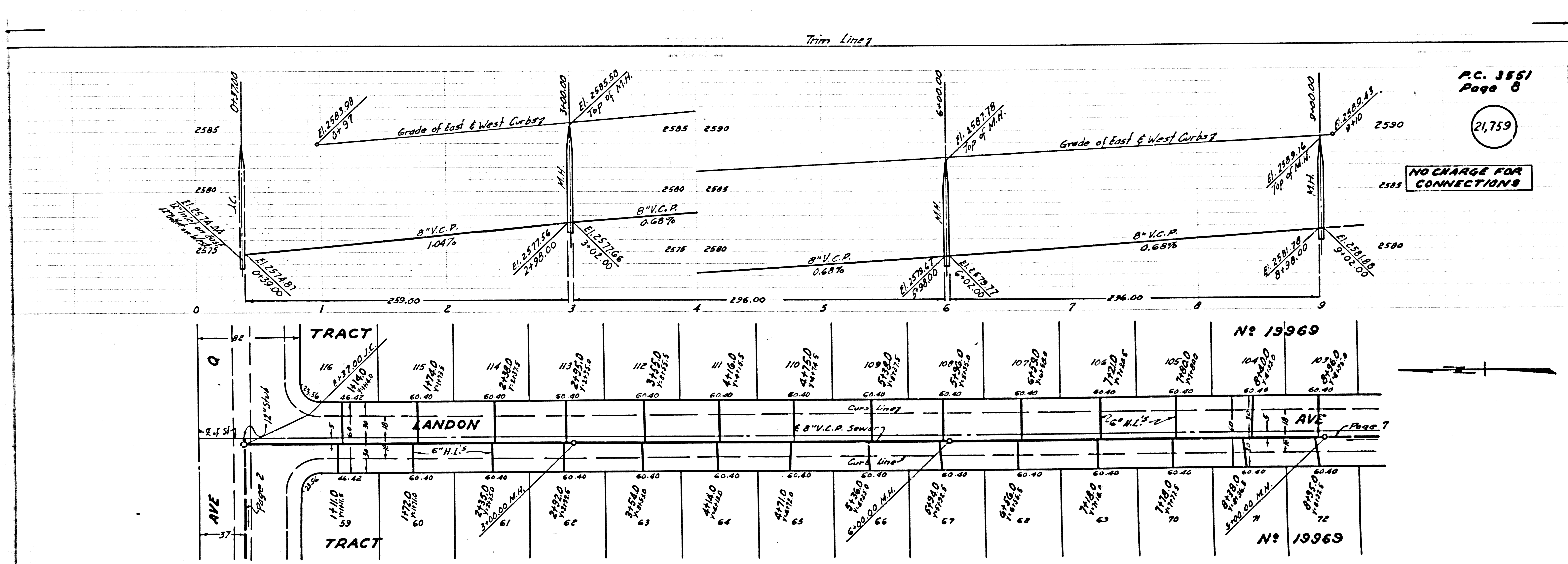


Red









92	116	115	114	113	112	111	110	109	108	107	106	105	104	103
114D	1140	1130	1120	1110	1100	1090	1080	1070	1060	1050	1040	1030	1020	1010
59	60	61	62	63	64	65	66	67	68	69	70	71	72	