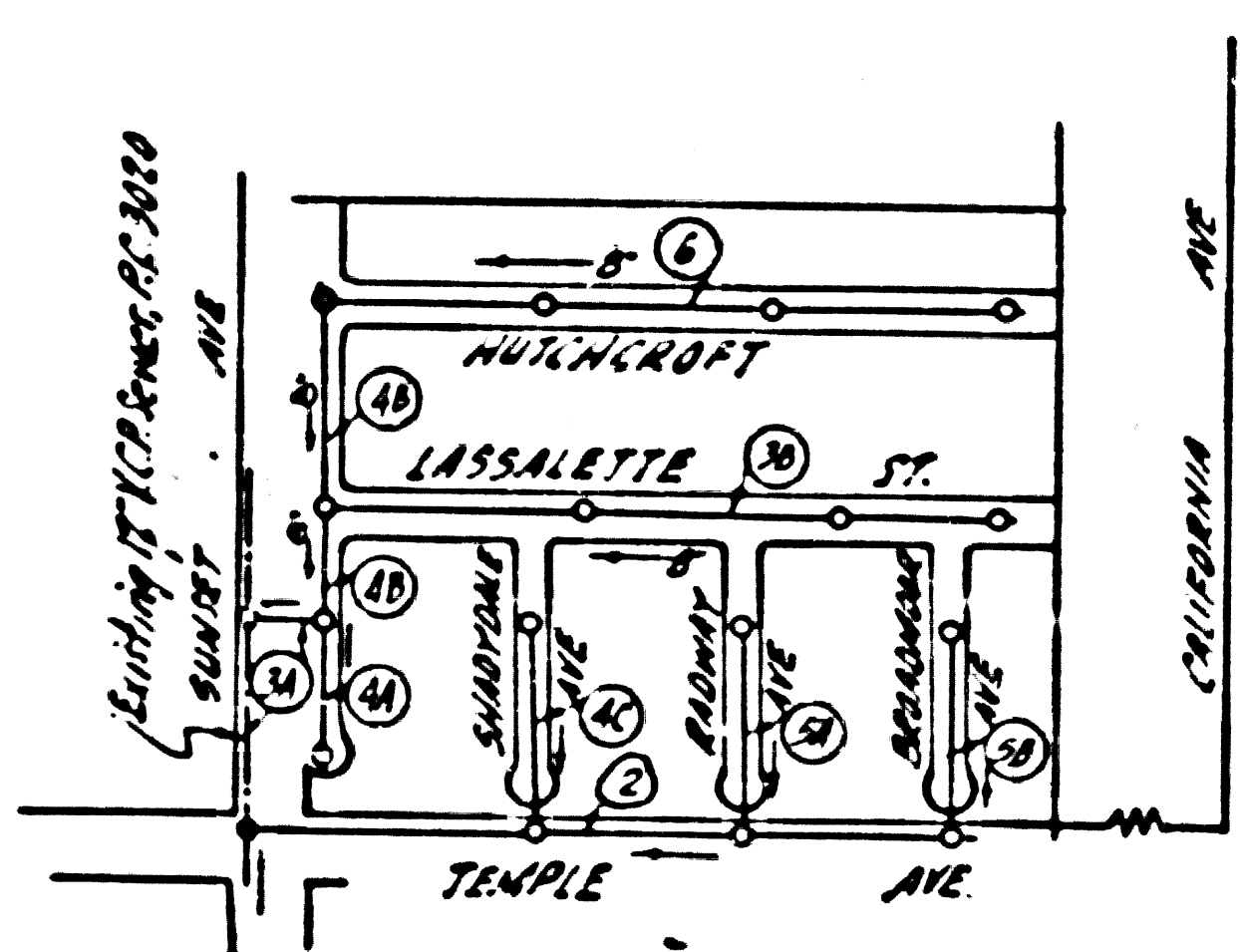


B.M. 56. 1108 E.I. 322.601  
 L & T. 17 East Co. of Alipate Ave  
 & Elliot Ave

**PUENTE BLDG. DIST N<sup>o</sup> 2**

- NOTE:  
 Provide stakes on the property lines or property lines produced at right angles to the sewer line at the center line of each manhole.  
 No representative of the County Engineer will survey or layout any portion of the work. The owner or his authorized representative shall furnish the County Engineer with grade sheets and stations for all house laterals and Y branches and shall provide stakes for them at their proper locations with stationing plainly marked. Any change in location shall be requested in writing by the owner or his representative.  
 No revisions shall be made in these plans without the approval of the County Engineer.
1. Use standard manhole frames and covers, S-a-117.
  2. Use standard strength pipe except as noted.
  3. Use cement mortar for all vitrified clay pipe joints.
  4. Resurface all trench within paved area to meet L.A. County Road Dept. or Calif. State Highway Dept. requirements in accordance with permit.
  5. Encase four feet of sewer at points of interference with poles, S-a-119.
  6. House laterals to be constructed with inverts at property line.....6....feet below curb grade except as noted.
  7. All structures shall be brick sewer structures, S-a-104.
  8. Manholes to be constructed in accordance with the California Building Code.
  9. For allowable leakage test, use Formula No. 1, L.A. Spec's., Sec. 51.



INDEX MAP  
 TRACT N<sup>o</sup> 20691  
 P.C. 3553  
 Scale: 1" = 300'

SHEETS	PAGES
1	1-3
2	4-6

NO CHARGE FOR CONNECTIONS  
 J. C. Adams & E. L. Ells

PROFILE, ALIGNMENT AND GRADE OF  
**SANITARY SEWERS**  
 TO BE CONSTRUCTED IN  
 TRACT N<sup>o</sup> 20691

PRIVATE CONTRACT NO. 3553  
 W.S. 58  
 SHEET 1 OF 2 SHEETS  
 Scale: HORIZ. 1" = 40' VERT. 1" = 4'  
 JUNE 1955  
 PREPARED IN THE OFFICE OF  
**ADAMS & ELLS**  
 121 S. C. & No. 417  
 FOR LEGEND SEE PLAN NO. S-a-64

NOTE:  
 Grades to which this improvement is to be constructed are shown on plans and profiles. Grade points for top of curbs, center line of streets, or center line of alleys are shown by circles on profiles. At all points between designated points the grade shall be established so as to conform to a straight line drawn between said designated points.  
 Elevations are in feet above U.S.C. (C.G.S. See level datum of 1929).  
 This drawing and the data hereon are hereby made a part of the specifications.  
 Work shall be constructed according to specifications on file in the office of the County Engineer and shall be prosecuted only in the presence of the County Engineer.  
 Before work can be started, the contractor must obtain a permit to excavate in County streets from the L.A. County Road Dept., 108 W. 2nd St. and make a deposit with the County Engineer, Room 310, 253 So. Broadway, sufficient to cover the cost of construction inspection and record plans.  
 Approval of this plan by the County of Los Angeles does not constitute a representation as to the accuracy of the location of or the existence or non-existence of any underground utility, pipe, or structure within the limits of this project. This note applies to all sheets.  
 If work is to be done in a State Highway, a permit must be obtained from the State of California, Division of Highways, 120 South Spring Street.

COUNTY OF LOS ANGELES, CALIFORNIA  
 Approved, John A. Lambie County Engineer Approved, A. M. Row  
 CHAS. H. HALL, DIST. NO. 15  
 J. P. Collins  
 SANITATION ENGINEER  
 Checked by: P. J. ... 12-24-55  
 Office of County Engineer, Dep. C. & No. 7262.

P.C. 3553  
 PAGE 1

24,781

TRACT N<sup>o</sup> 20691

P.C. 3553

W.C. 222

RL

1

PC 3553  
PAGE 3

NO CHARGE FOR CONNECTIONS

NO NORTH ON SOUTH

24783

SALETTE

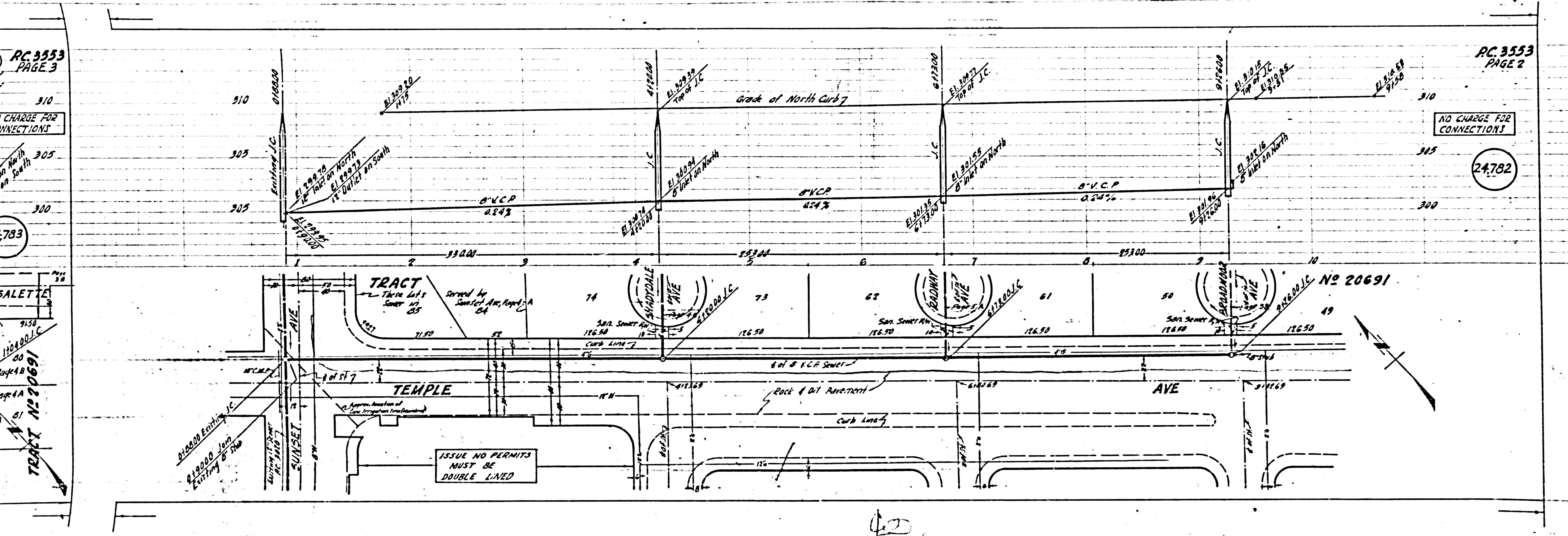
110400 J.C.

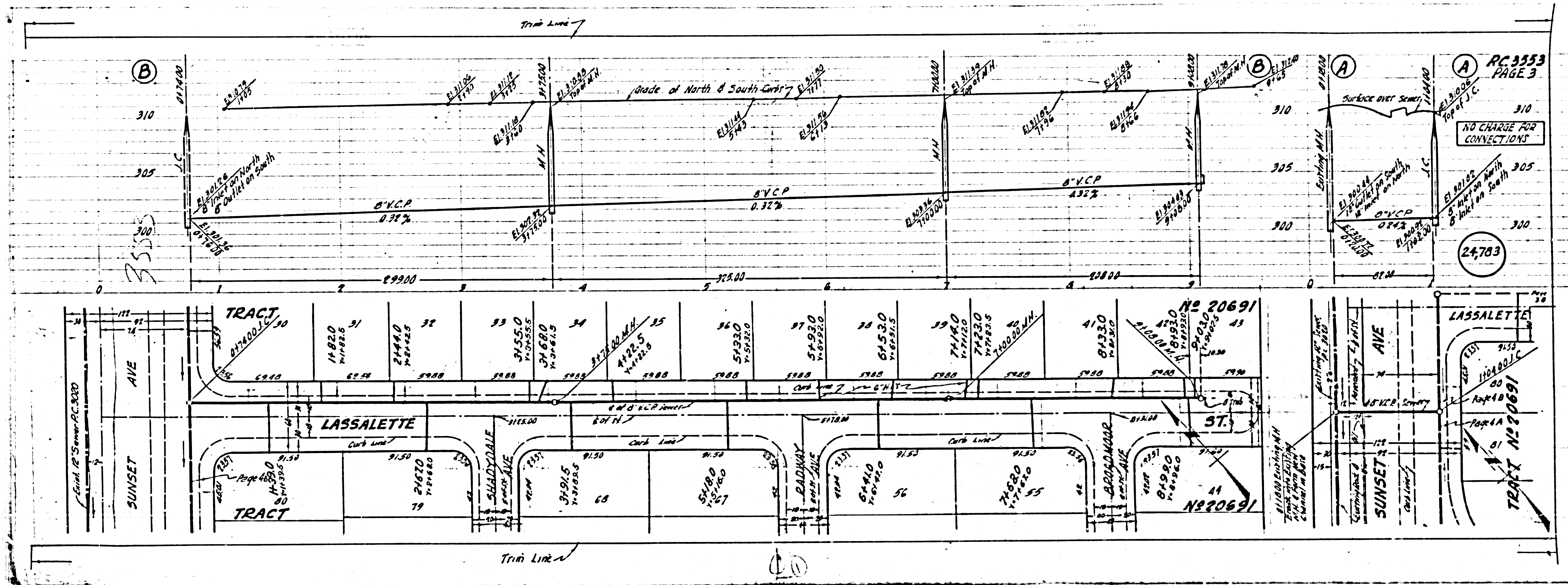
TRACT NO 20691

PC 3553  
PAGE 2

NO CHARGE FOR CONNECTIONS

24782

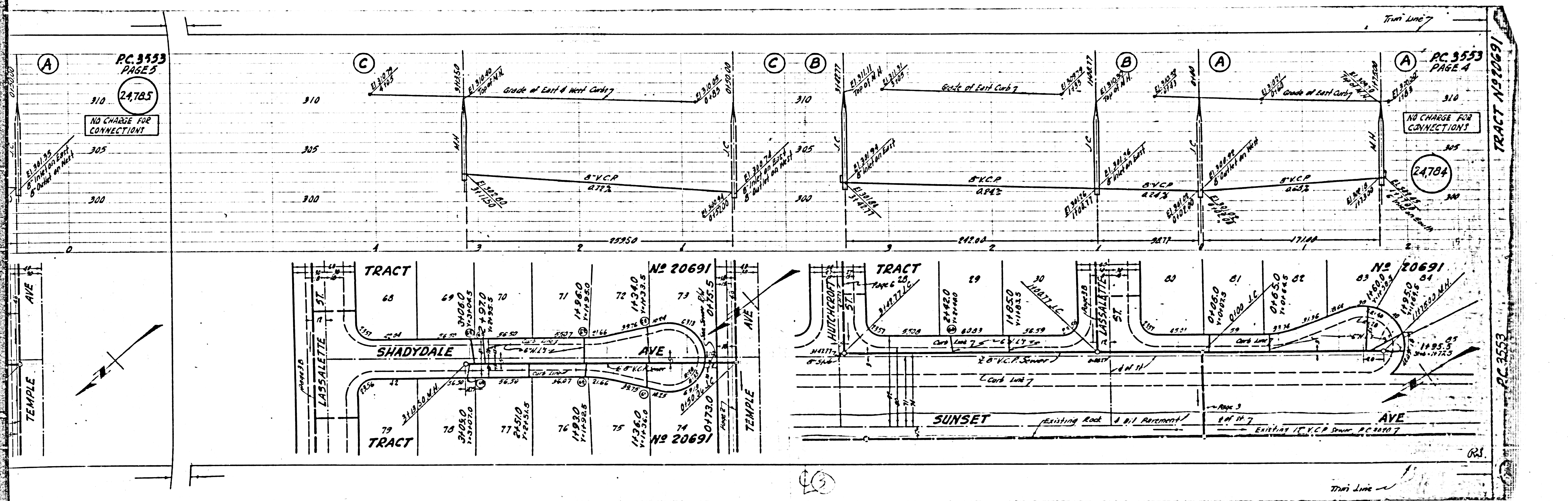




RC 3553  
 PAGE 3  
 NO CHARGE FOR  
 CONNECTIONS

24.783

0.0000 Existing  
 0.0000 Existing



PC 3553  
PAGE 5

24785

NO CHARGE FOR CONNECTION

PC 3553  
PAGE 4

24784

NO CHARGE FOR CONNECTION

TRACT N° 20691

PC 3553

3

GRS

Trini Line

PC. 3553  
PAGE 6

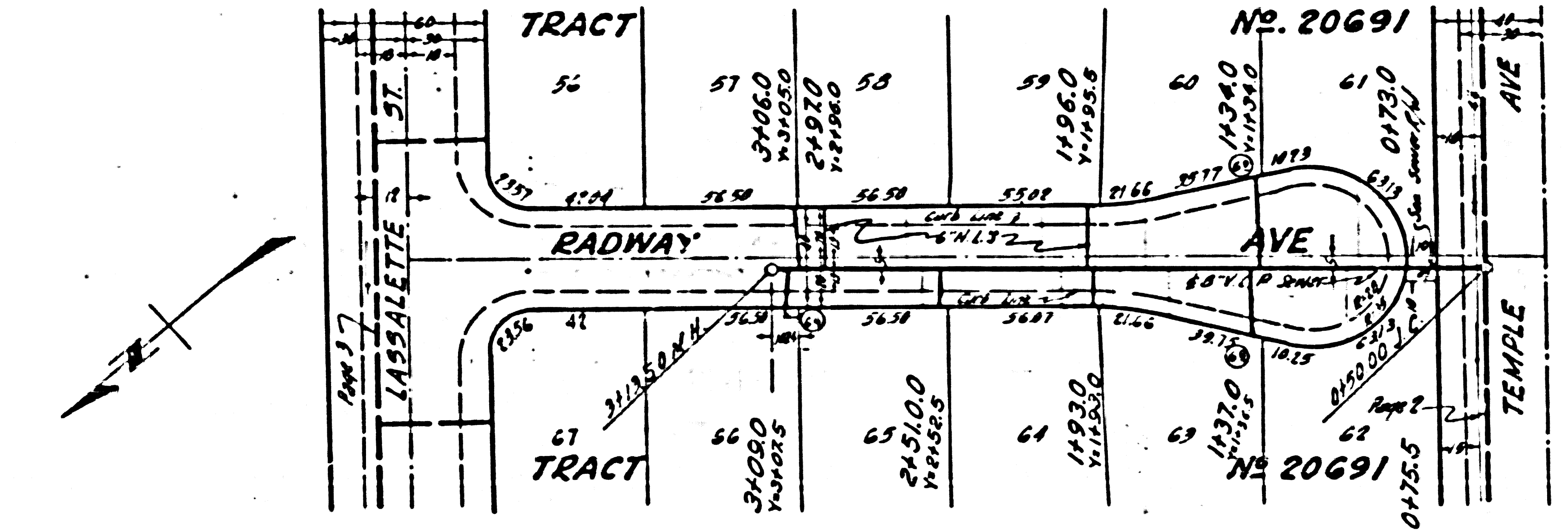
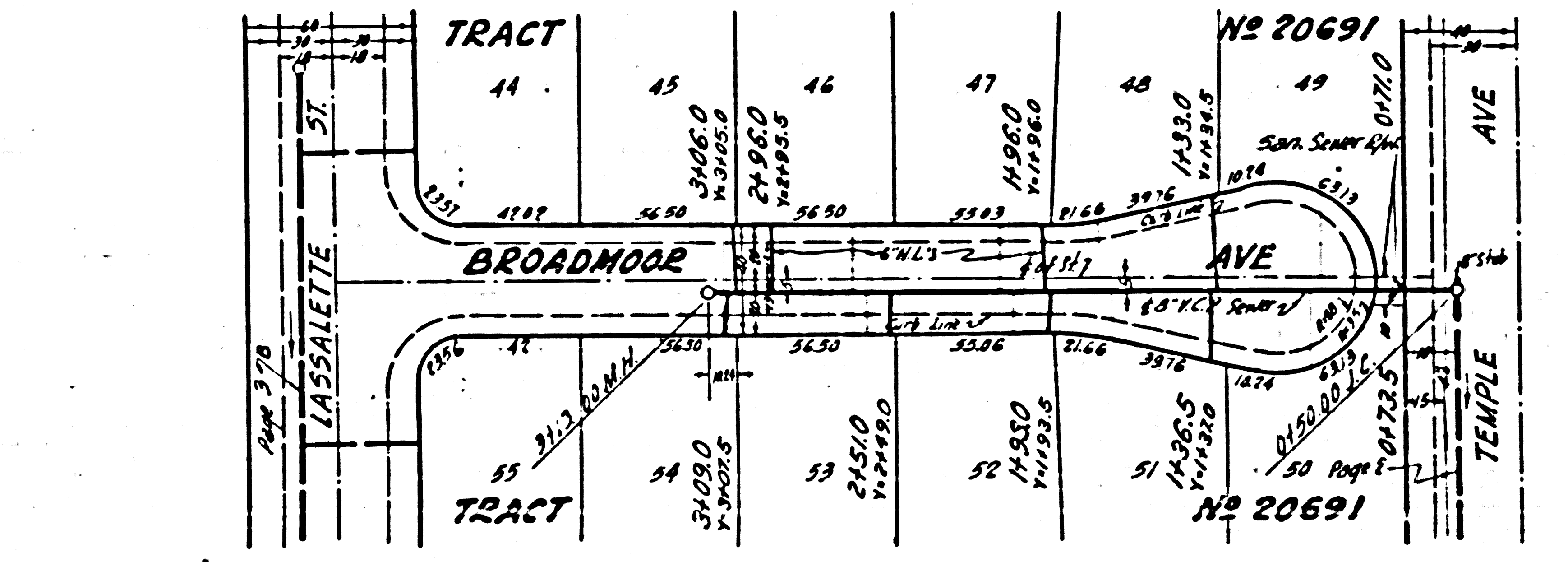
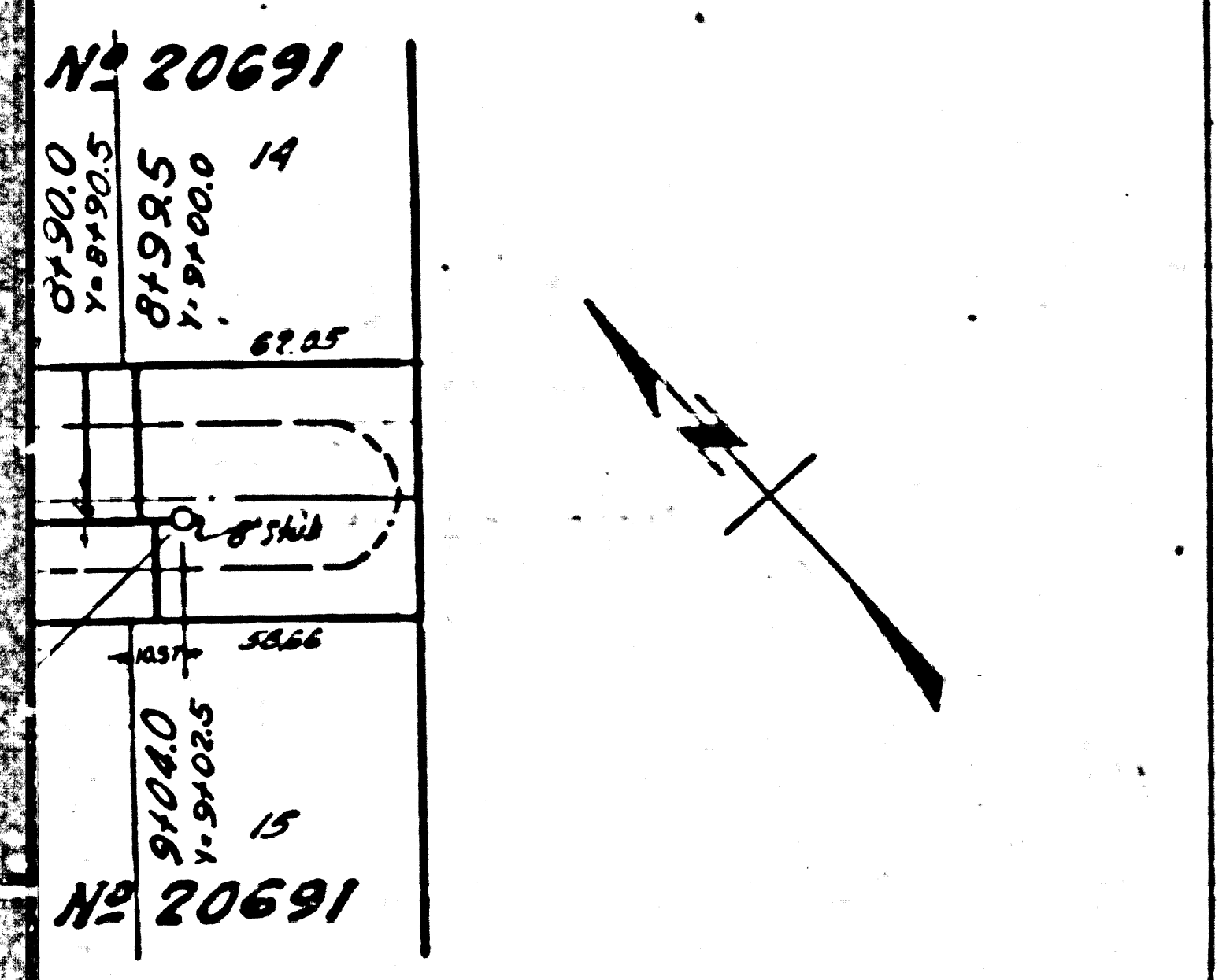
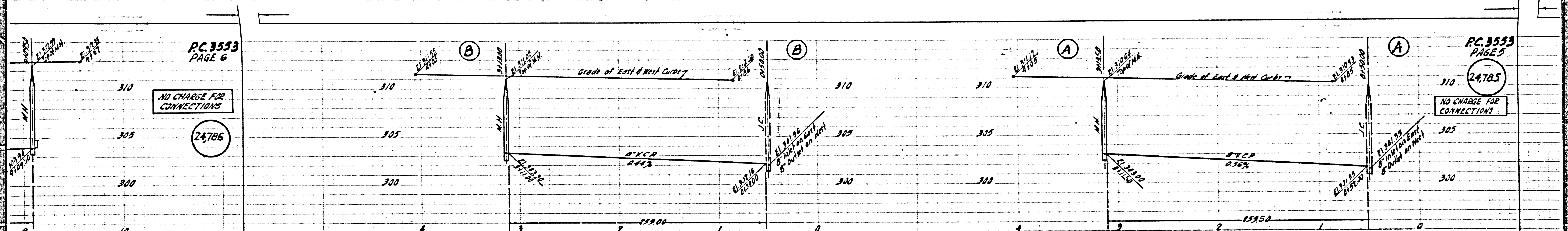
NO CHARGE FOR  
CONNECTIONS.

24,786

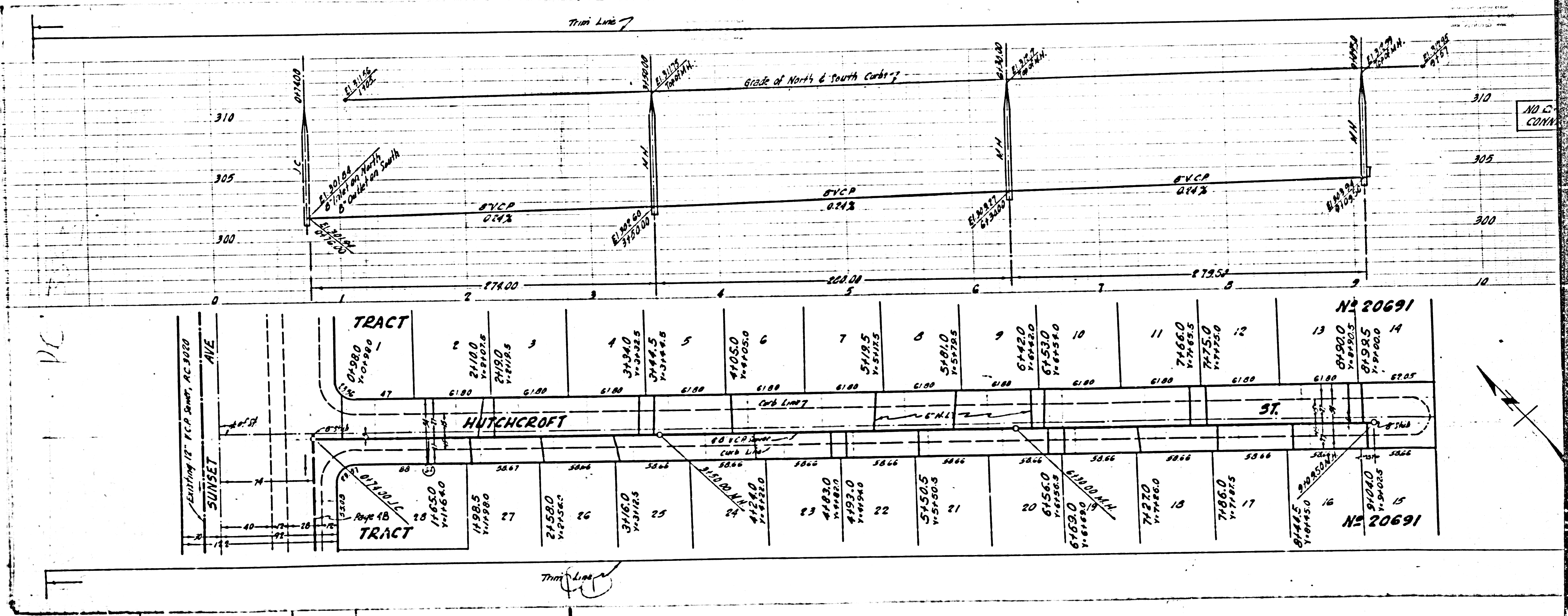
PC. 3553  
PAGE 5

24,785

NO CHARGE FOR  
CONNECTIONS.



10



VC

NO. 20691

NO. 20691

NO. 20691

Existing 12' V.C.P. Point, AC 3020  
SUNSET AVE

TRACT

HUTCHCROFT ST.

TRACT

THIN LINE

