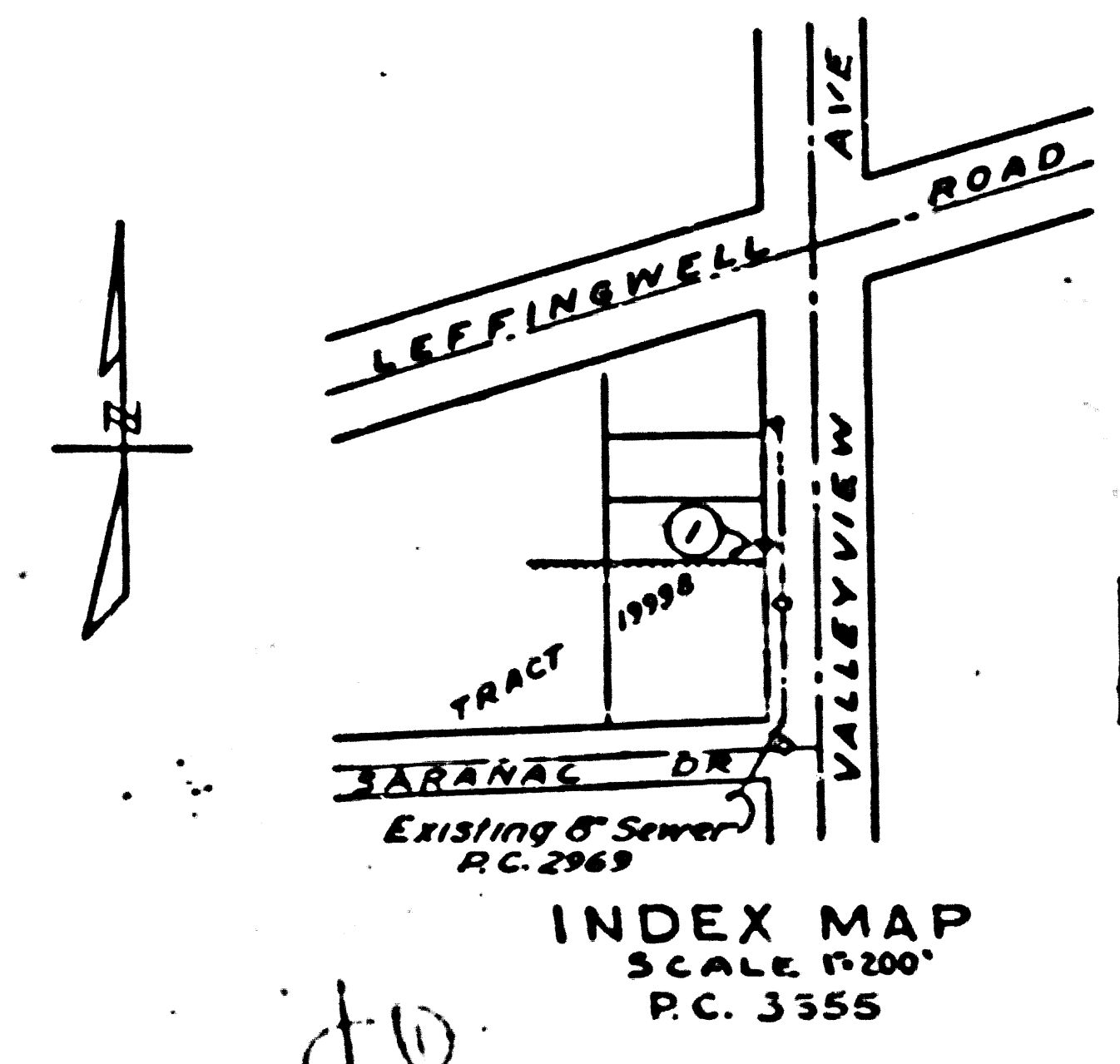


BELLFLOWER BLDG. DISTRICT NO 4

- NOTE:**
- Provide stakes on the property lines or property lines produced at right angles to the sewer line at the center line of each manhole.
 - No representative of the County Engineer will survey or layout any portion of the work.
 - The owner or his authorized representative shall furnish the County Engineer with grade sheets and stations for all house laterals and Y branches and shall provide stakes for them at their proper locations with stationing plainly marked. Any change in location shall be requested in writing by the owner or his representative.
 - No revisions shall be made in these plans without the approval of the County Engineer.
 - Use standard manhole frames and covers, S-a-117.
 - Use standard strength pipe.
 - Use cement mortar for all vitrified clay pipe joints.
 - Resurface all trench within paved area to meet L.A. County Road Dept. or California State Highway Dept. requirements in accordance with permit.
 - Excise four feet of sewer at points of interference with poles, S-a-119.
 - House laterals to be constructed with laterals of property line $\frac{1}{2}$ foot below curb grade.
 - All structures shall be brick sewer structures, S-a-104.
 - For allowable leakage test, use Formula No. 1, Spec's, Sec. 51.
 - Manhole tops in unimproved Right-of-Way to be 6" above finish grade.



PROFILE, ALIGNMENT AND GRADE OF
SANITARY SEWERS
TO BE CONSTRUCTED IN
VALLEY VIEW AVE

PAGE 1
P.C. 3555

20,880

PRIVATE CONTRACT NO. 3555
W. S. 34
ONE SHEET

Scale: VERT. 1" = 4'
HORIZ. 1" = 40'
(JUNE) 1955

PREPARED IN THE OFFICES OF

TRI ENGINEERING SERVICE

By *Paul E. Romeo* Reg. C.E. No. 2874

FOR LEGEND SEE PLAN NO. S-a-64

NOTE:

Grades to which this improvement is to be constructed are shown on plans and profiles. Grade points for top of curb, center line of streets, or center line of alleys are shown by circles on profiles. At all points between designated points the grade shall be established so as to conform to a straight line drawn between said designated points.

Elevations are in feet above U.S.G.S. datum or mean sea level.

This drawing and the data hereon are hereby made a part of the specifications.

Work shall be constructed according to specifications on file in the office of the County Engineer and shall be prosecuted only in the presence of the County Engineer.

Before work can be started, the contractor must obtain a permit to excavate in County street from the L.A. County Road Dept., 108 W. 2nd St., and make a deposit with the County Engineer, Room 269, 209 S. Broadway, sufficient to cover the cost of construction inspection and record plans.

Approval of this plan by the County of Los Angeles does not constitute a representation as to the accuracy of the location of or the existence or non-existence of any underground utility, pipe, or structure within the limits of this project. This note applies to all sheets.

If work is to be done in a State Highway, a permit must be obtained from the State of California, Division of Highways, 128 South Spring Street.

COUNTY OF LOS ANGELES, CALIFORNIA

Approved, *William J. Fox*, County Engineer
Approved, *A. M. Evans*, SAN. DIST. NO. 18
By *A. P. Collins*, Engineer
By *R. W. Williams*, Office Engineer

Checked by *J. K. Under*, 6-22-55
Office of County Engineer, Reg. C.E. No. 3466

P.C. 3555

VALLEY VIEW AVE

P.C. 3555

Trim Line