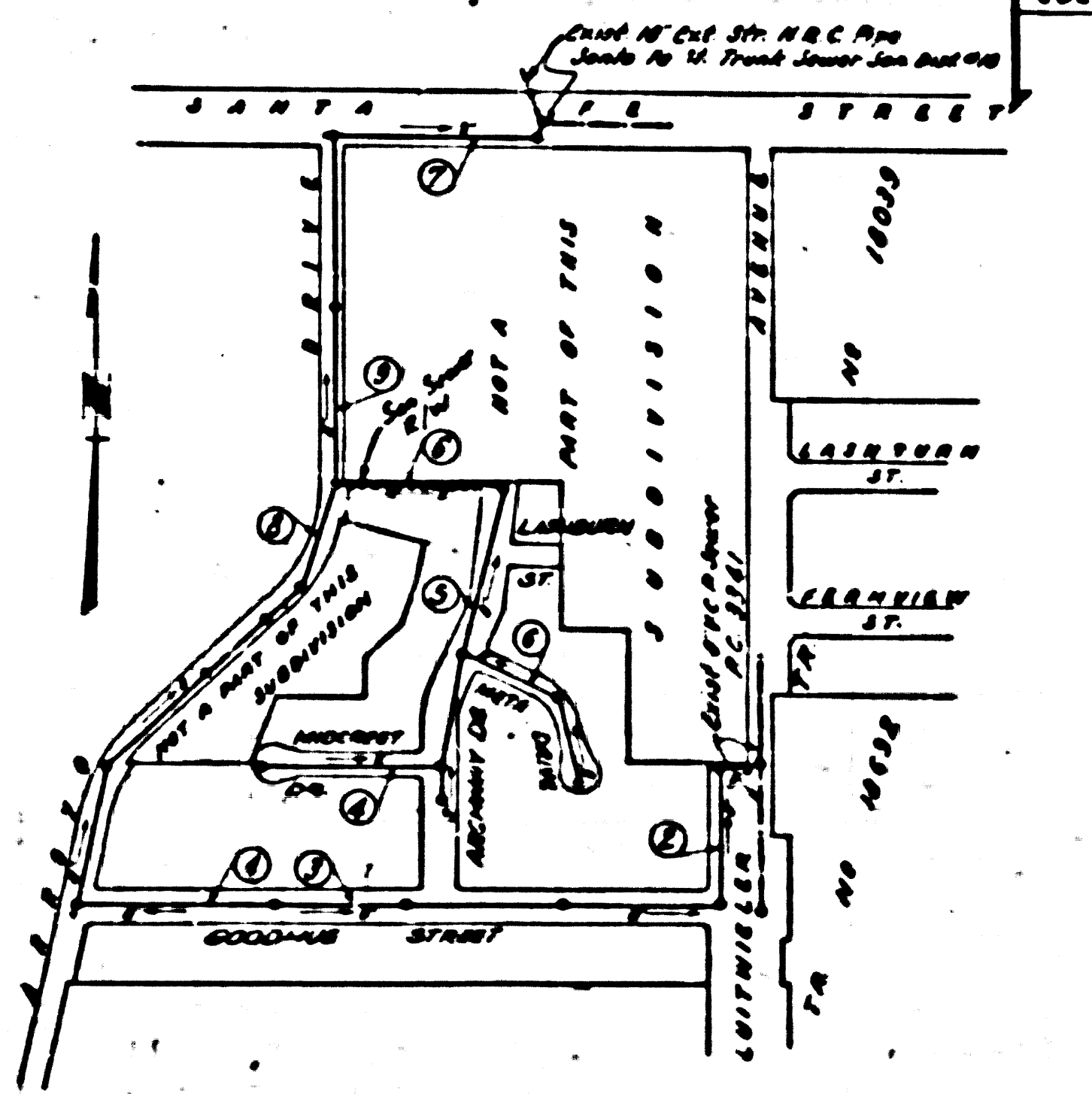


2  
3560

381



B. N. 1228 L & T cfr. of owner  
Helen S. and drain pipe 55' N.  
S. SANTA FE ST 6' MIN W.  
COLIMA RD. ELEV. 187.307

**WHITTIER BLD'G. DISTRICT NO. 11**

- NOTE:**
1. Provide stakes on the property lines or property lines produced at right angles to the corner line of each mark.
  2. No representative of the County Engineer will survey or layout any portion of the work.
  3. The owner or his authorized representative shall furnish the County Engineer with grade sheets and elevations for all house laterals and T branches and shall provide holes for them at their proper locations with stationing plainly marked. Any change in location shall be requested in writing by the owner or his representative.
  4. No revisions shall be made in these plans without the approval of the County Engineer.
  5. Use standard manhole frames and covers, S-117.
  6. Use standard strength pipe except as noted.
  7. Use cement mortar for all vitrified clay pipe joints.
  8. Resurface all trench within paved area to meet L.A. County Road Dept. or California State Highway Dept. requirements in accordance with permit.
  9. Excavate four feet of cover at points of interference with poles, S-119.
  10. House laterals to be constructed with laterals with poles, S-119, \_\_\_\_\_ feet below curb grade except as noted.
  11. All structures shall be brick cover structures, S-106. *Except as noted*
  12. For allowable leakage test, see Formula No. \_\_\_\_\_, Spec. No. 51.

SHEET NO.	PAGES
1	1-2
2	3-8

**NO CHARGE FOR CONNECTIONS**  
*Alvin 7-18-55*

Before breaking into any existing structure  
and before final acceptance of this work,  
County Sanitation District should be notified  
in order that required inspection may be made.

PROFILE, A. SHIMMENT AND GRADE OF  
SANITARY SEWERS  
TO BE CONSTRUCTED IN

PAGE 1  
P.C. 3560

TRACT No. 21378

21380

PRIVATE CONTRACT NO. 3560  
W. S. 34  
2 SHEETS

Scale: 1"=10' VERT. 1"=40' HOR.  
JUNE - 1955  
PREPARED BY THE OFFICES OF

**KEMMERER ENGINEERING CO. INC.**  
*John C. Kemmerer* Reg. C.E. No. 8048  
FOR LEGEND SEE PLAN NO. S-a-64

**NOTE:**

Grades to which this improvement is to be constructed are shown on plans and profiles. Grade points for top of curb, center line of street, or center line of alley are shown by circles on profiles. All points between designated points the grade shall be established so as to conform to a straight line between said designated points.

Elevations are in feet above U.S.S.L. datum or mean sea level.

This drawing and the data hereon are hereby made a part of the specifications.

Work shall be constructed according to specifications on file in the office of the County Engineer and shall be prosecuted only in the presence of the County Engineer.

Before work can be started, the contractor must obtain a permit to excavate in County streets from the L.A. County Road Dept., 108 W. 2nd St. and make a deposit with the County Engineer, Room 218, 213 S. Broadway, sufficient to cover the cost of construction inspection and record plans.

Approval of this plan by the County of Los Angeles does not constitute a representation as to the necessity of the location of or the existence or non-existence of any underground utility, pipe, or structure within the limits of this project. The same applies to all sheets.

If work is to be done in a State Highway, a permit must be obtained from the State of California, Division of Highways, 120 South Spring Street.

**COUNTY OF LOS ANGELES, CALIFORNIA**

Approved, William A. Fox, County Engineer  
*A.P. Collins* District Engineer  
Checked by: *J.K. Onda*  
Office of County Engineer, Reg. C.E. No. 3496

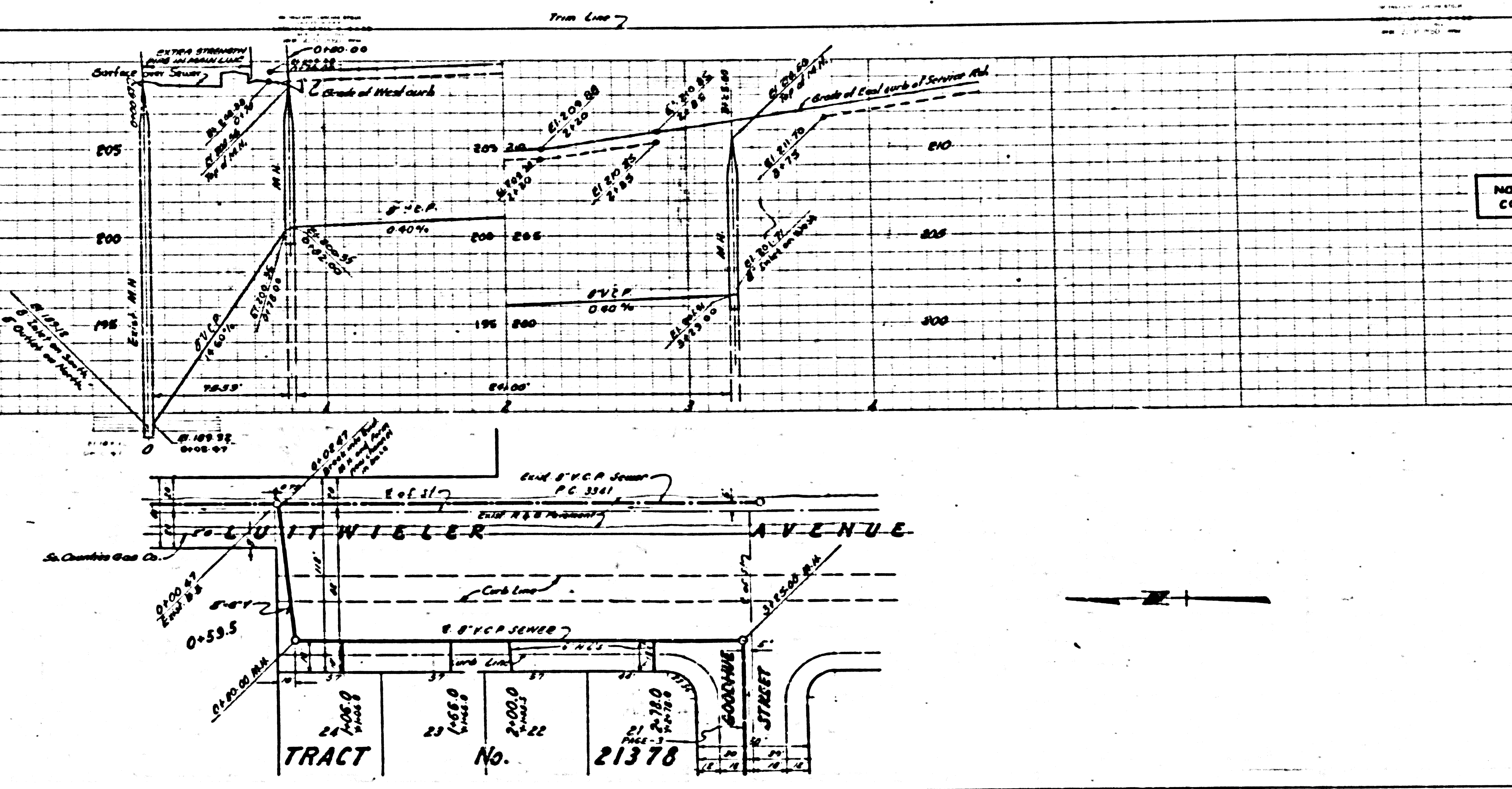
Approved, A. M. Bove  
CIVIL ENGINEER, SAN DIST. NO. 11  
*J. J. Anderson* Office Engineer

*Sealed 9-19-55*

16



3  
60  
2



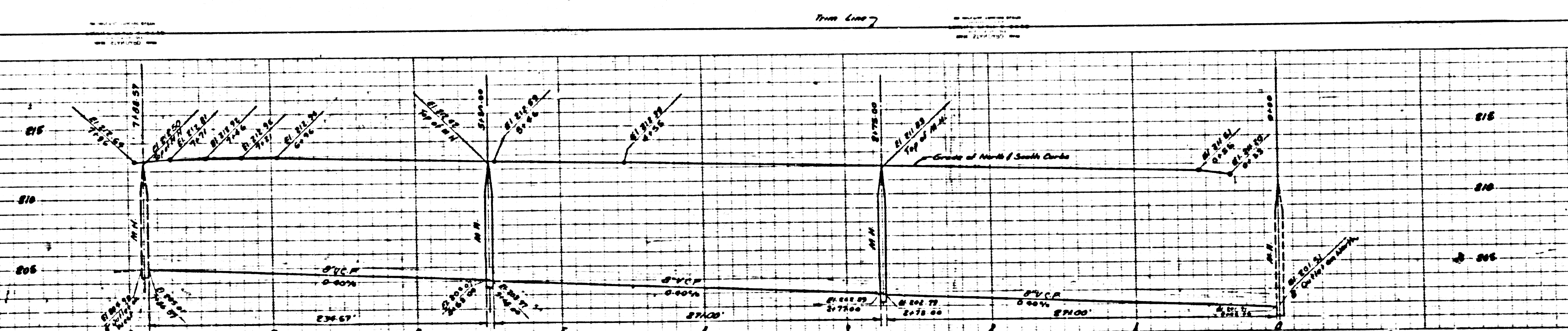
PAGE 2  
P.C. 3560

NO CHARGE FOR CONNECTIONS

(21381)

(11)

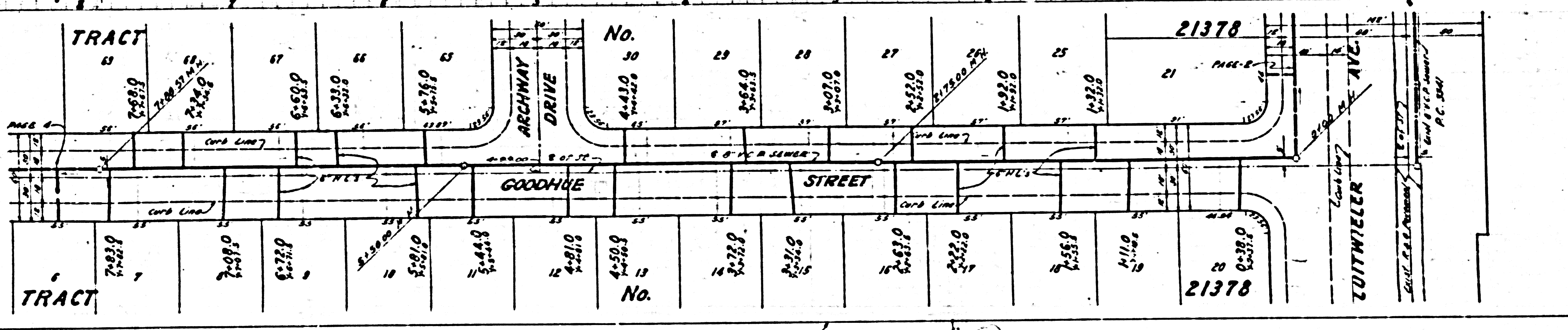




PAGE 5  
P.C. 3560

NO CHARGE FOR CONNECTIONS

21,382



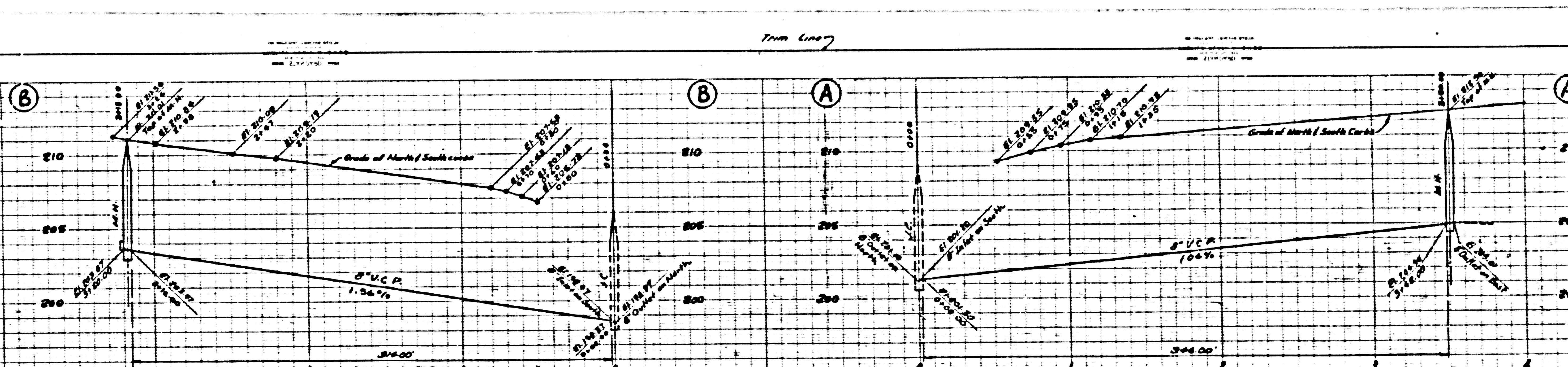
43



PAGE 5  
C. 3560

FOR  
104'S

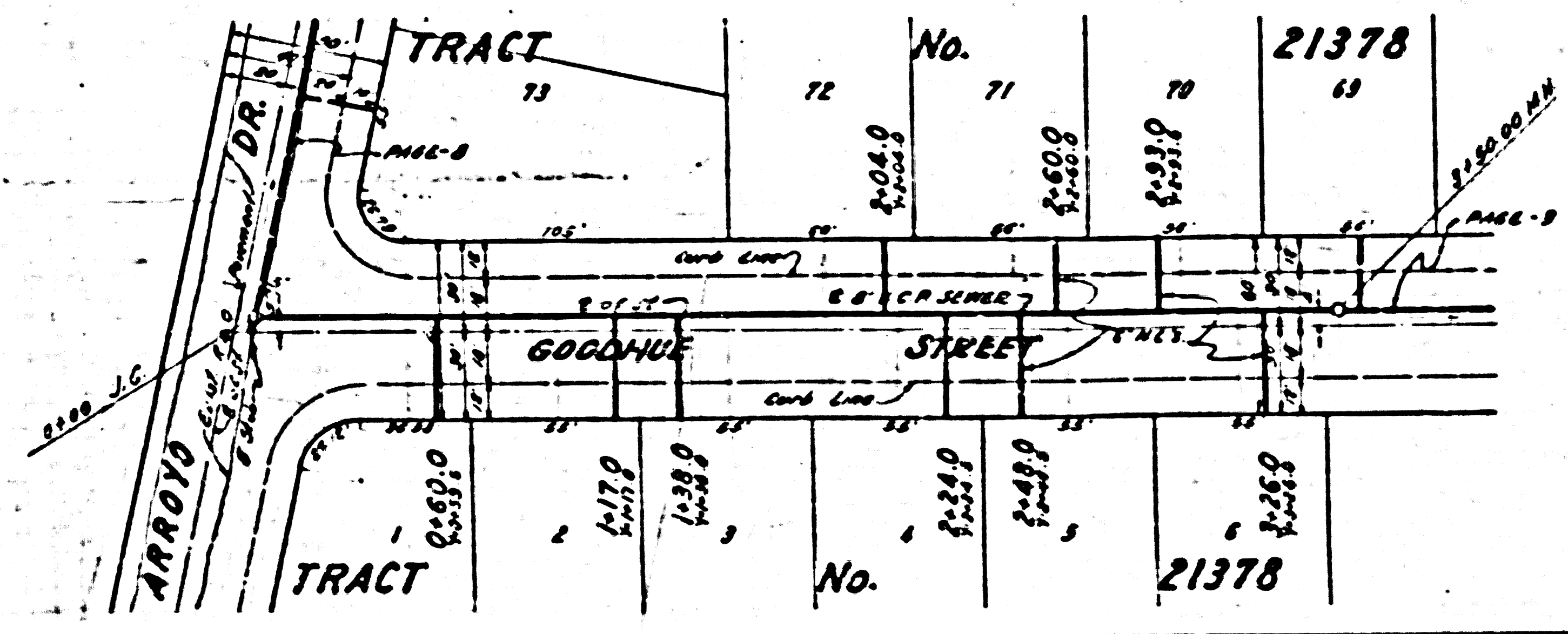
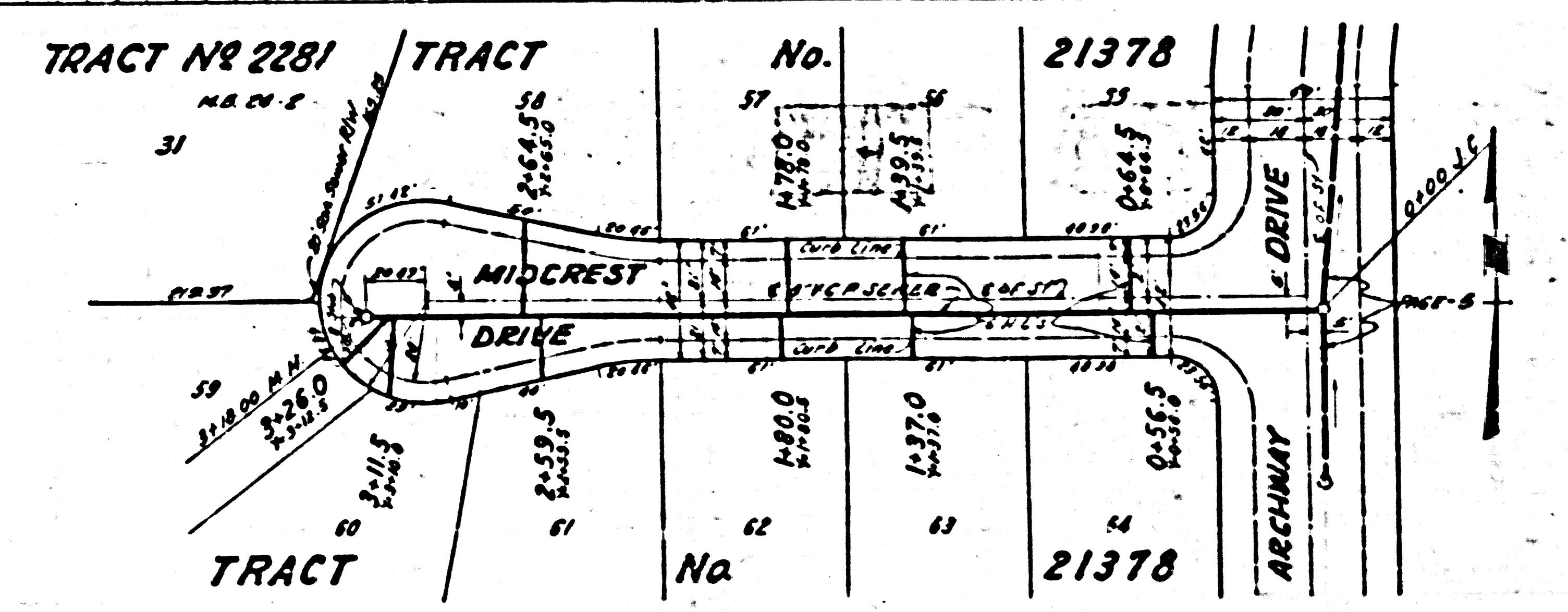
21,384



PAGE 4  
P.C. 3560

NO CHARGE FOR  
CONNECTIONS

21,383



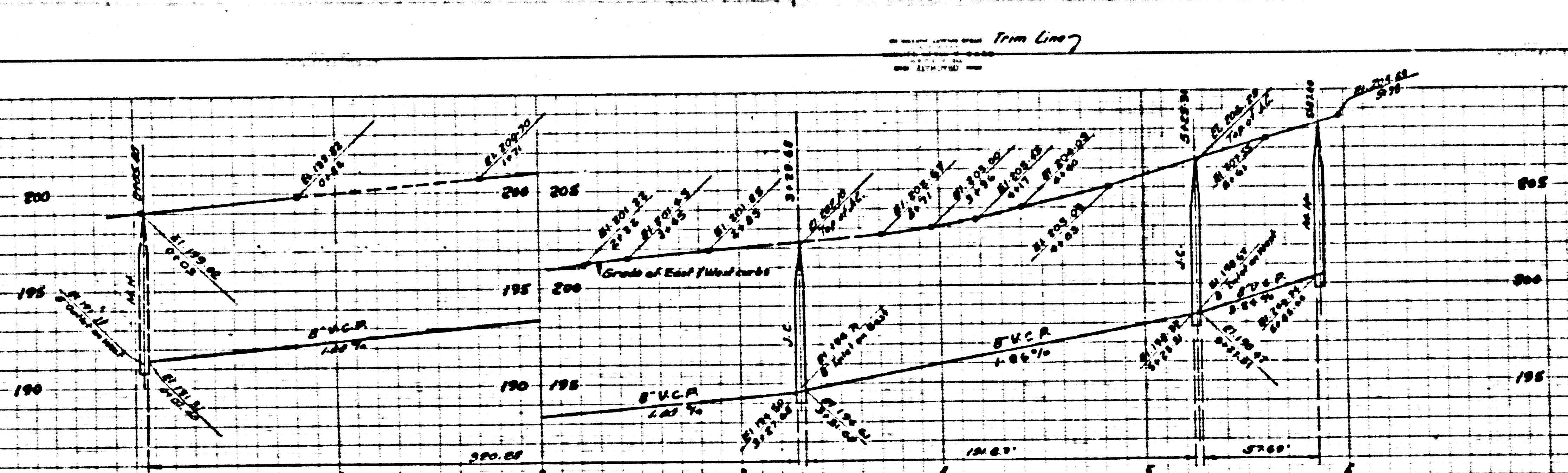
Trim Line

PAGE 4

TRA



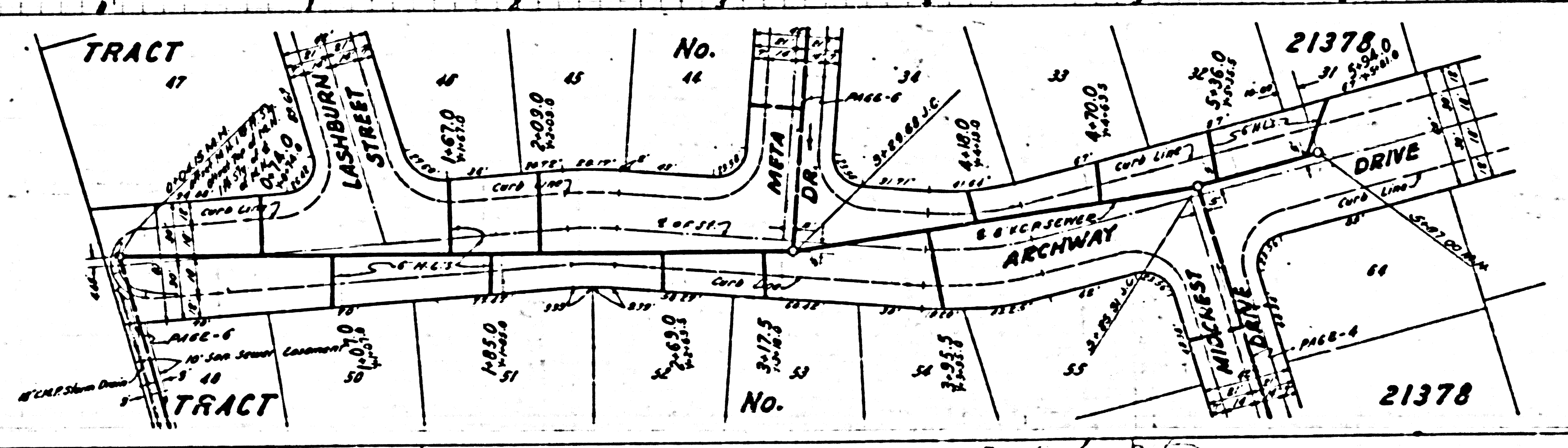
PC 3560



PAGE 5  
P.C. 3560

NO CHARGE FOR CONNECTIONS

21384



B

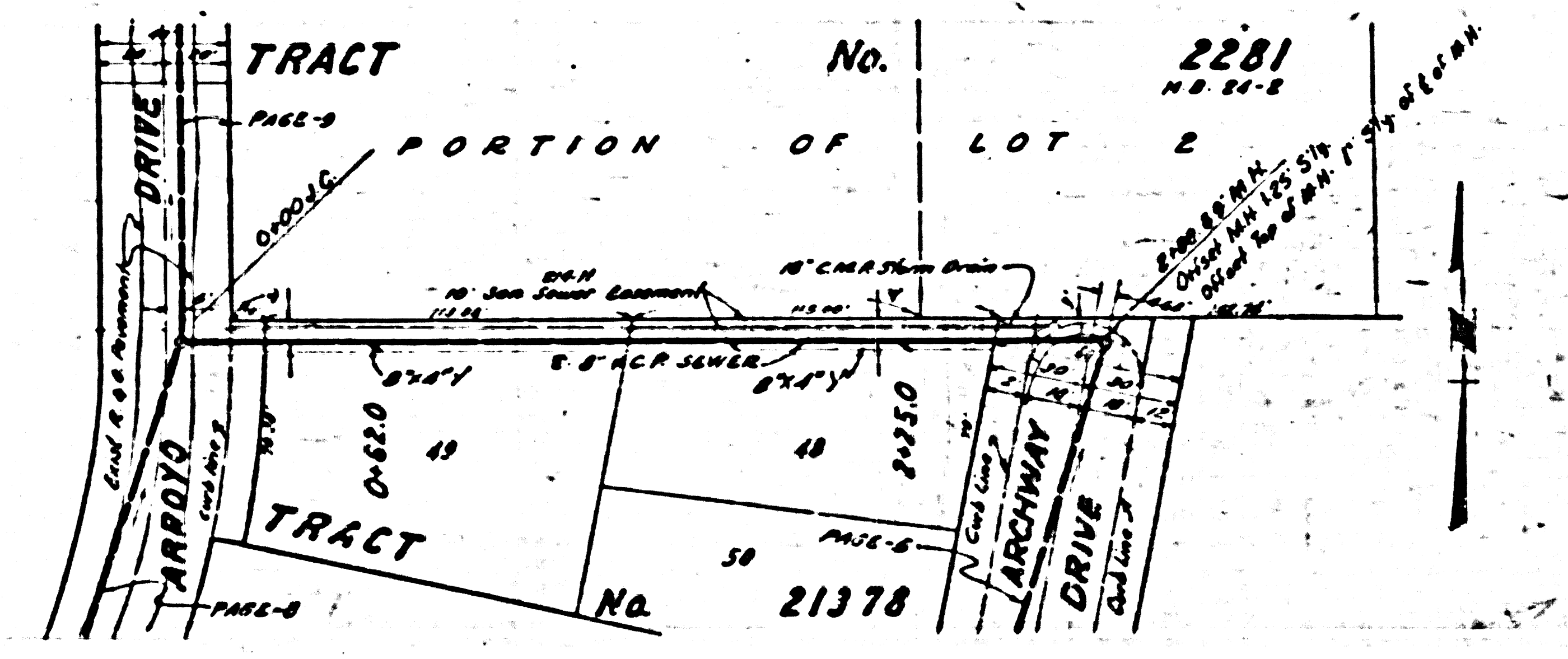
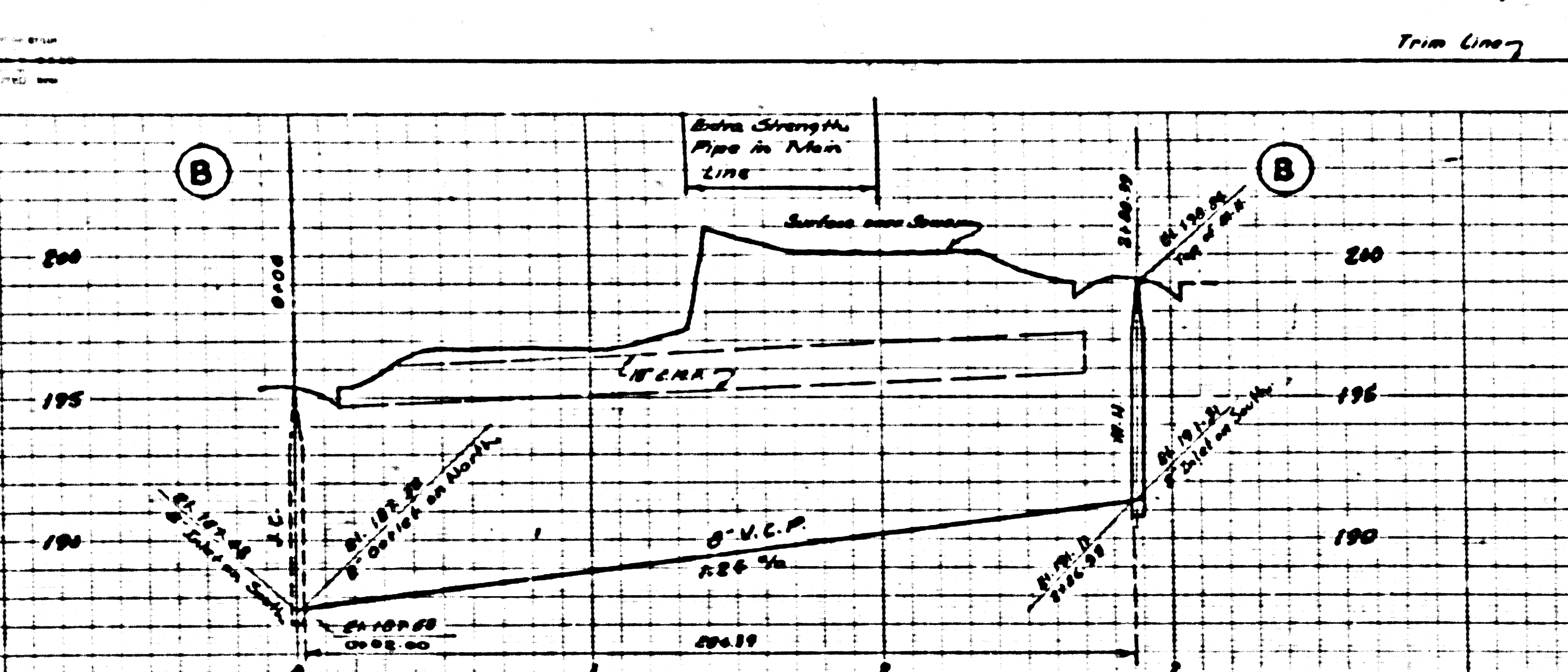
TRACT

Trim Line



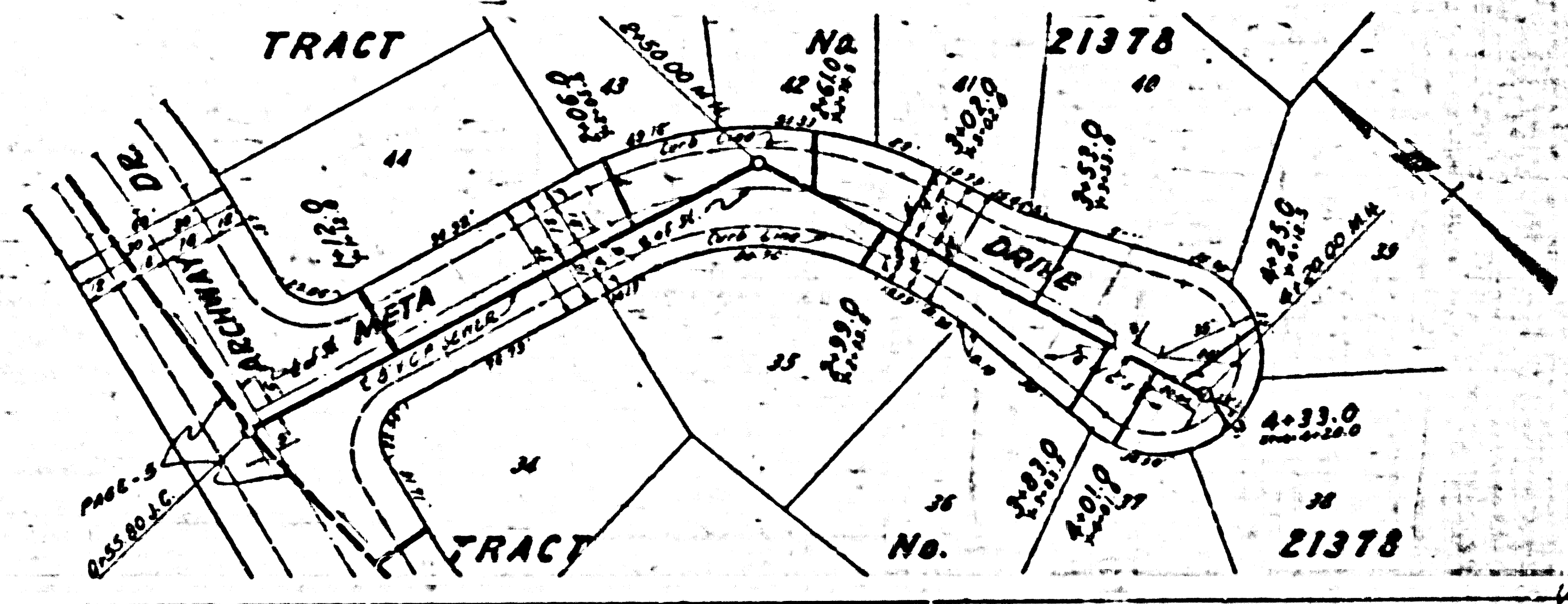
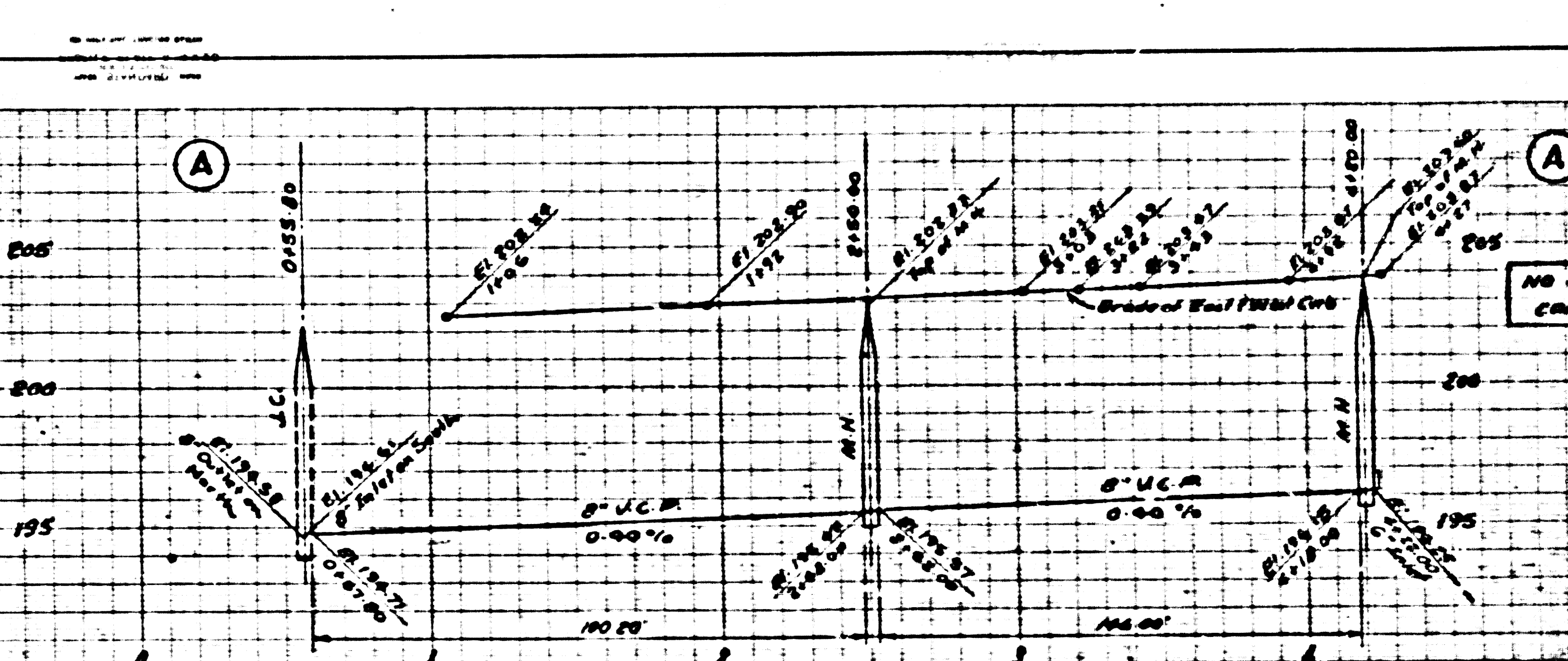
PAGE 7  
P.C. 3560

21,386



PAGE 6  
P.C. 3560

21,385



NO CHARGE FOR CONNECTIONS

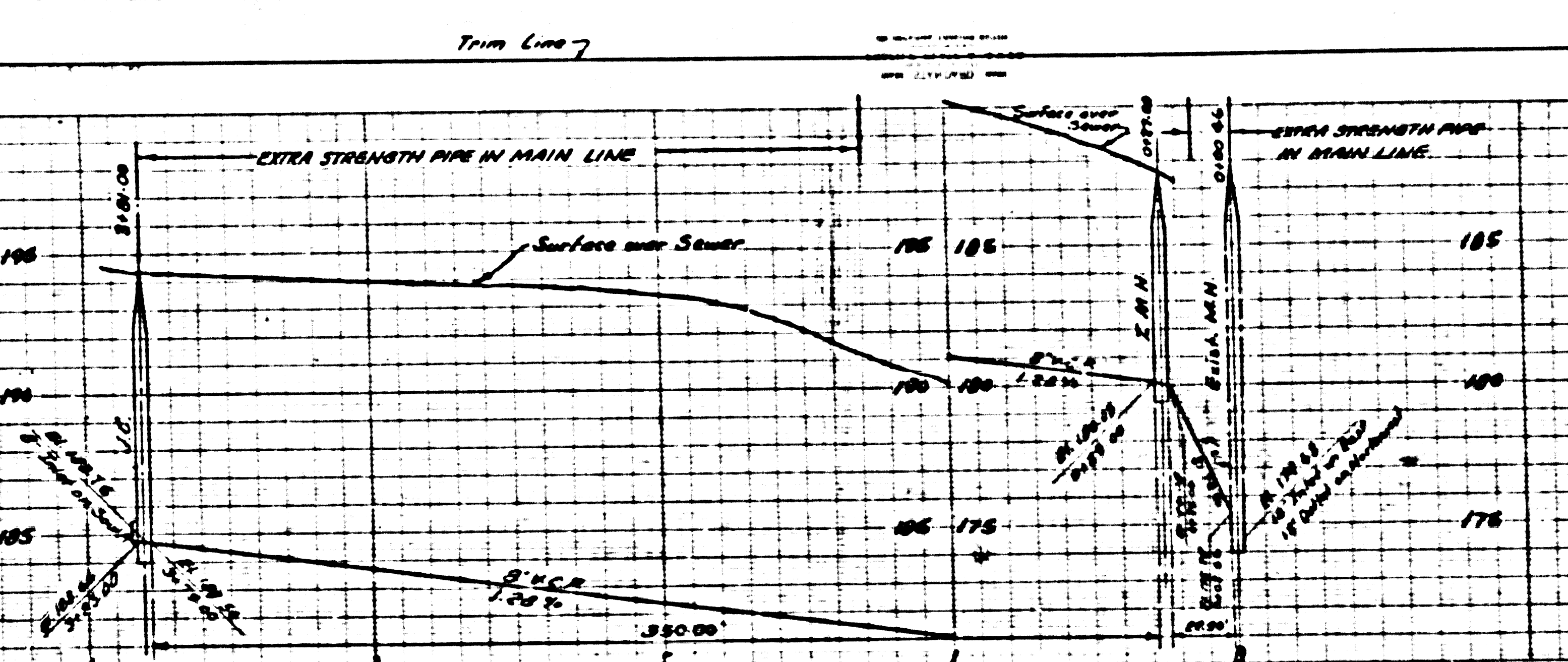
Trim Line

210



AGE 8  
C. 3560

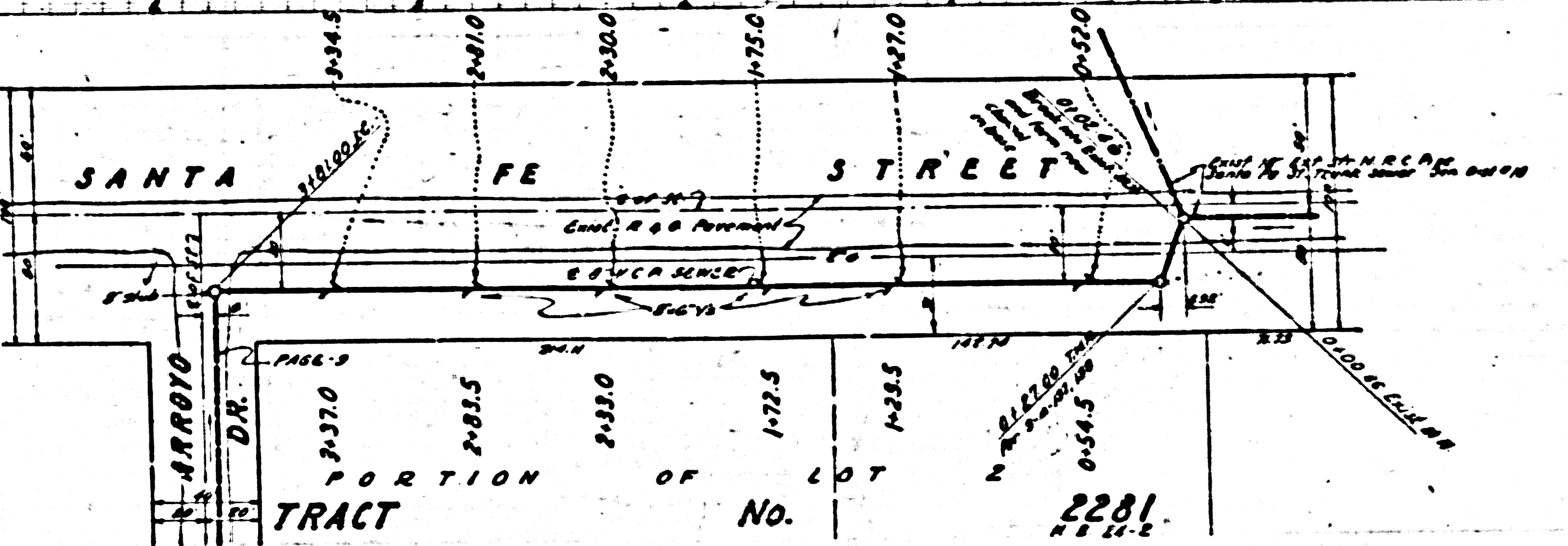
NO. 21,387



PAGE 7  
P.C. 3560

NO CHARGE FOR  
CONNECTIONS

21,386

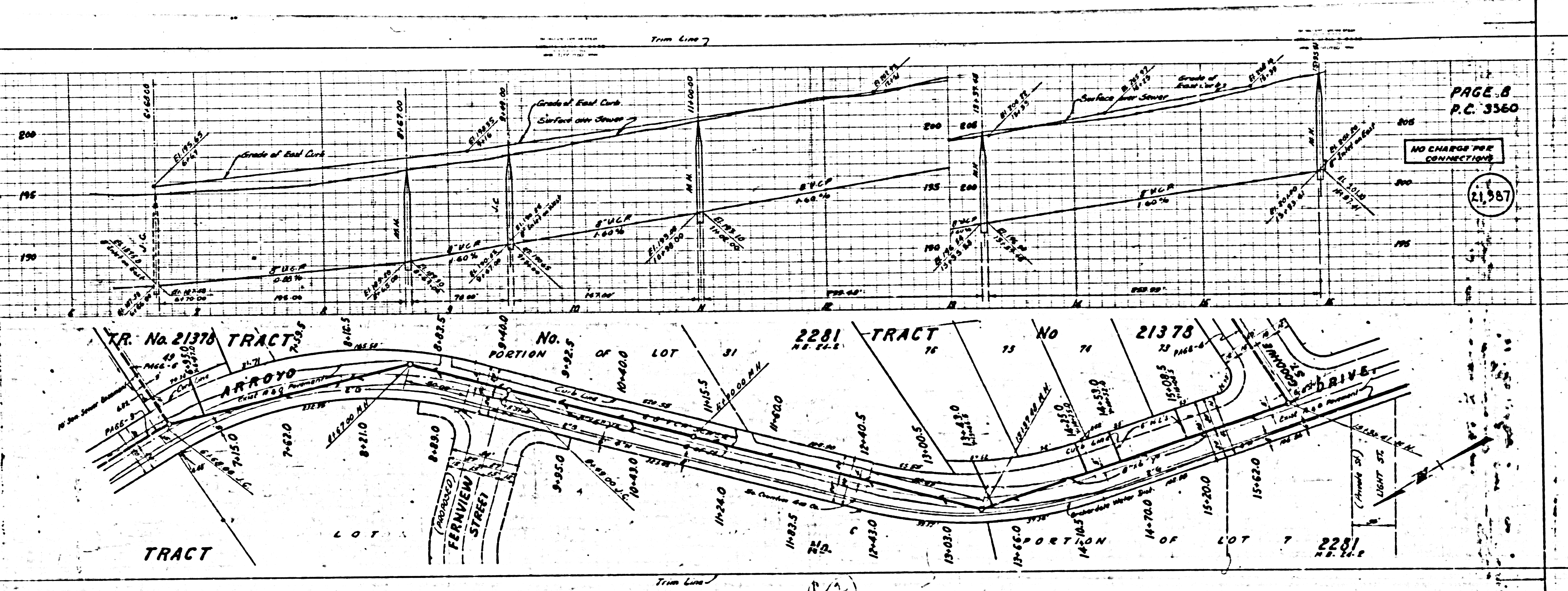


21,386



9  
3560

B



PAGE 8  
P.C. 3560

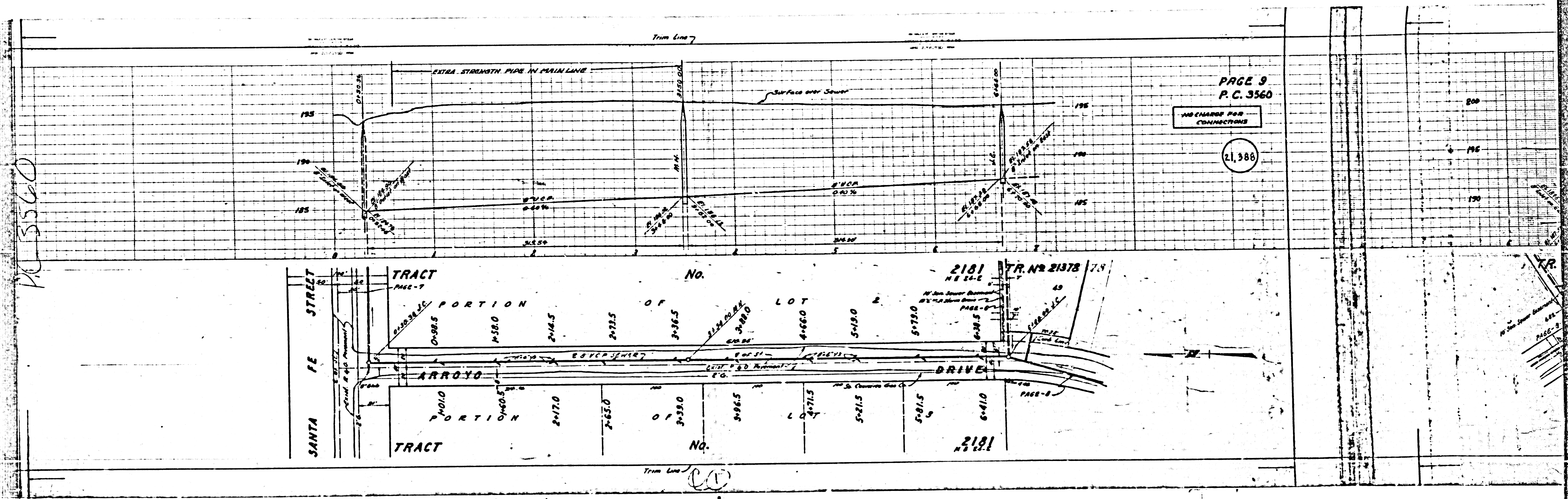
NO CHARGE FOR CONNECTIONS

21,387

12



P.C. 3560



PAGE 9  
P.C. 3560

NO CHANGES FOR CONNECTIONS

21,388

