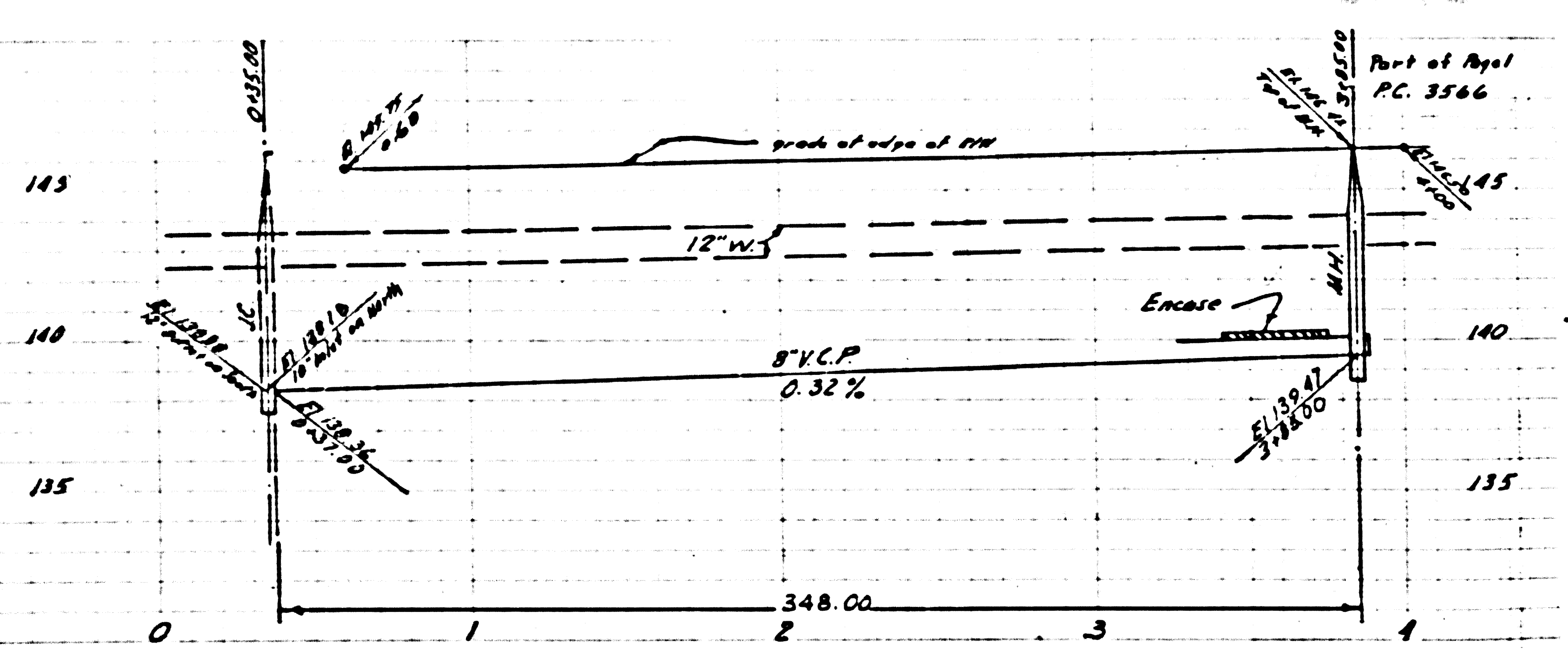


Trim Line



WHITTIER BIDG. DIST. NO 11

PC 3566
Page 1

- NOTE:**
Provide stakes on the property lines or property lines produced at right angles to the sewer line at the center line of each manhole.
No representative of the County Engineer will survey or layout any portion of the work.
The owner or his authorized representative shall furnish the County Engineer with grade sheets and stations for all house laterals and 'Y' branches and shall provide stakes for them at their proper locations with stationing plainly marked. Any change in location shall be requested in writing by the owner or his representative.
No revisions shall be made in these plans without the approval of the County Engineer.
1. Use standard manhole frames and covers, S-a-117.
 2. Use standard strength pipe except as noted.
 3. Use cement mortar for all vitrified clay pipe joints.
 4. Resurface all trench within paved area to meet L.A. County Road Dept or California State Highway Dept requirements in accordance with permit.
 5. Excise four feet of sewer at points of interference with poles, S-a-119.
 6. House laterals to be constructed with 1/2" pipe per foot to R/W Line.
 7. All structures shall be brick sewer structures, S-a-104.
 8. For allowable leakage test, use Formula No. 1, Spec's., Sec. 51.
 9. Manhole tops in unimproved Rights-of-Way to be 6" above finish grade.

PROFILE, ALIGNMENT AND GRADE OF
SANITARY SEWERS
TO BE CONSTRUCTED IN
**SANITARY SEWER R/W
NORTH OF SAMUSON AVE.**

PRIVATE CONTRACT NO. 3566
W. S. 36
ONE SHEET

Scale: VERT. 1"=4'
HORIZ. 1"=40'
July 1955

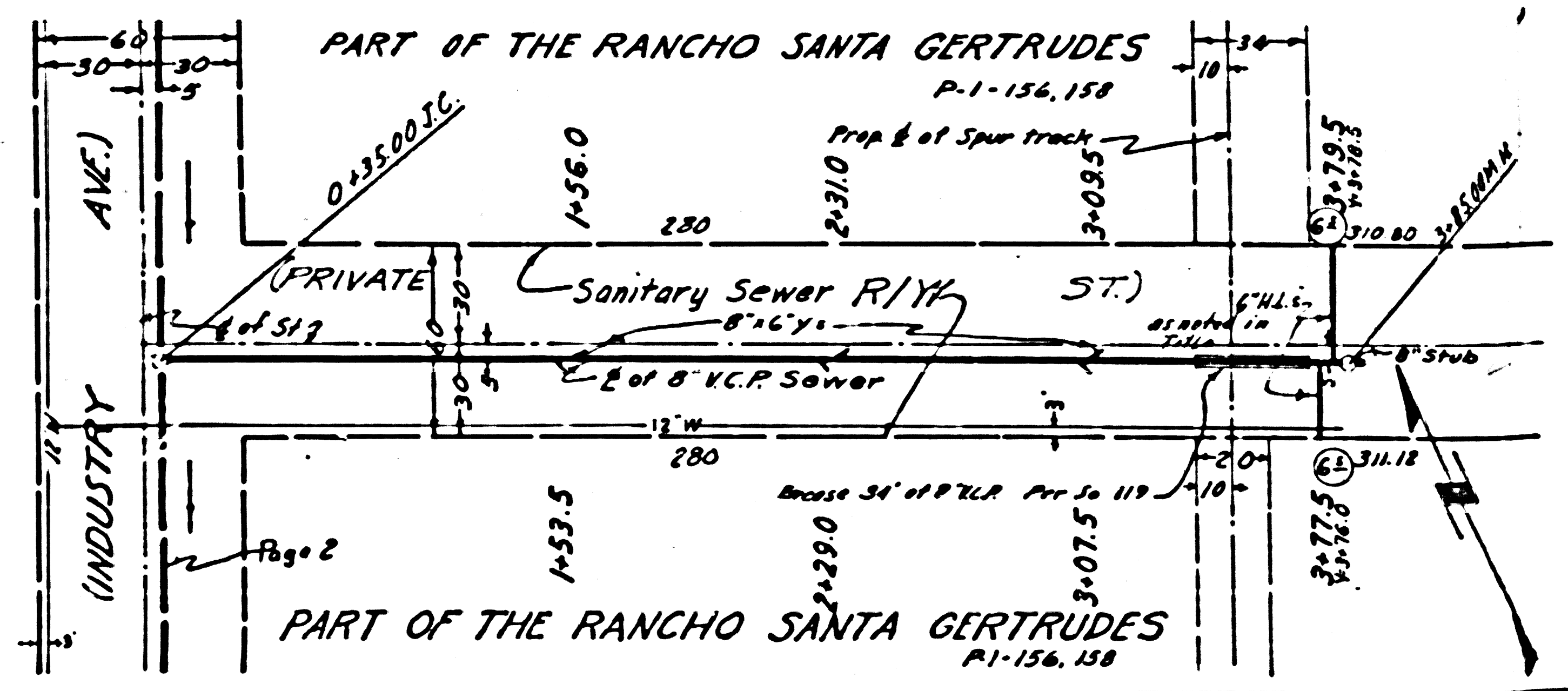
PREPARED IN THE OFFICES OF
RALPH W. BOGE

David R. Edwards
CALIFORNIA STATE LICENSE NO. 4704 Exp. C.E. No. 4704

FOR LEGEND SEE PLAN NO. S-a-64

NOTE:
Grades to which this improvement is to be constructed are shown on plans and profiles. Grade points for top of curbs, center line of streets, or center line of alleys are shown by circles on profiles. At all points between designated points the grade shall be established so as to conform to a straight line drawn between said designated points.
Elevations are in feet above U.S.C.S. datum or mean sea level.
This drawing and the data hereon are hereby made a part of the specifications.
Work shall be constructed according to specifications on file in the office of the County Engineer and shall be prosecuted only in the presence of the County Engineer.
Before work can be started, the contractor must obtain a permit to excavate in County streets from the L.A. County Road Dept., 100 W. 2nd St. and make a deposit with the County Engineer, Room 223 St. Broadway, L.A., sufficient to cover the cost of construction inspection and record fees.
Approval of this plan by the County of Los Angeles does not constitute a representation as to the accuracy of the location or the existence or non-existence of any underground utility, pipe, or structure within the limits of this project. This note is due to all sheets.
If work is to be done in a State Highway, a permit must be obtained from the State of California, Division of Highways, 120 South Spring Street.

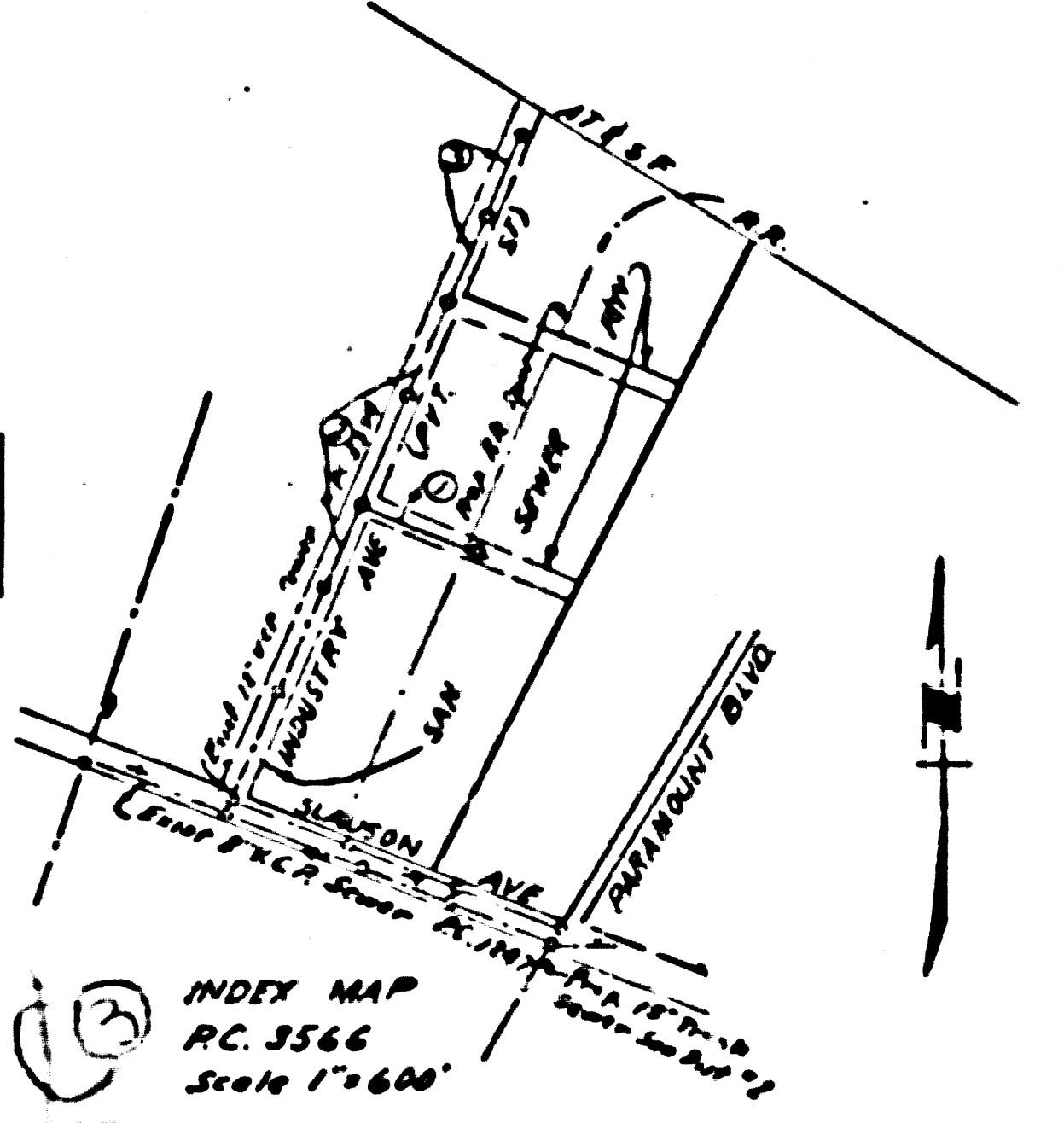
COUNTY OF LOS ANGELES, CALIFORNIA
Approved, John A. Lambie, County Engineer
Approved, A. M. Ravn
CHIEF ENGR. OF SAN. DIST. NO. 11
Checked by: *P. J. ...*
Office of County Engineer, Box, C. E. No. 2840



B.M. #7 M.J. 7422 C.M. 46
Spr. in case man 15' deep
50' RT. & FT. 78.99, 97

NO CHARGE FOR CONNECTIONS

| SHEET | PAGE |
|-------|------|
| 1 | 1-3 |



Checked 10-26-55 *W. J. ...*

Trim Line

21,645

(3)

PC 3566

10 3506

