

trim line

SHT 1 of 2

PALMDALE BLDG. DIST. NO 81

P.C. 3567
Page 1

NOTE:

Provide stakes on the property lines or property lines produced at right angles to the sewer line at the center line of each manhole.

No representative of the County Engineer will survey or layout any portion of the work.

The owner or his authorized representative shall furnish the County Engineer with grade sheets and stations for all house laterals and Y branches and shall provide stakes for them at their proper locations with stationing plainly marked. Any change in location shall be requested in writing by the owner or his representative.

No revisions shall be made in these plans without the approval of the County Engineer.

1. Use standard manhole frames and covers, S-a-117.
2. Use standard strength pipe except as noted.
3. Use cement mortar for all vitrified clay pipe joints.
4. Resurface all trench within paved area to meet L. A. County Road Dept. or California State Highway Dept. requirements in accordance with permit.
5. Encase four feet of sewer at points of interference with poles, S-a-119.
6. House laterals to be constructed with inverts at property line 6 feet below curb grade except as noted.
7. All structures shall be brick sewer structures, S-a-104.
8. For allowable leakage test, use Formula No. 1, Spec's., Sec. 54.
9. Manhole tops in unimproved Rights-Of-Way to be 6" above finish grade.
10. **BALL ALL PIPE JOINTS WITH 4" CEMENT MORTAR THAT ARE WITHIN 20 FT. OF ALL PROPERTY LINES OR IN SANITARY SEWER R/W**
11. *The private engineer is to furnish the house Lateral depth at the property line below the Top of Curb elevation for each House Lateral on the grade Sheet.*

PROFILE, ALIGNMENT AND GRADE OF

SANITARY SEWERS

TO BE CONSTRUCTED IN

TRACT NO 20189

24701

PRIVATE CONTRACT NO. 3567

W. S. 65

2 SHEETS 9 PAGES

Scale: VERT. 1"=4'
HORIZ. 1"=40' JUNE 1955

PREPARED IN THE OFFICES OF
HARMAN RASNOW

By Monte D. Jelewsky Reg. C. E. No. 8758

FOR LEGEND SEE PLAN NO. S-a-64

NOTE:

Grades to which this improvement is to be constructed are shown on plans and profiles. Grade points for top of curbs, center line of streets, or center line of alleys are shown by circles on profiles. At all points between designated points the grade shall be established so as to conform to a straight line drawn between said designated points.

Elevations are in feet above U.S.C. & G.S. Sea Level datum of 1929.

This drawing and the data hereon are hereby made a part of the specifications.

Work shall be constructed according to specifications on file in the office of the County Engineer and shall be prosecuted only in the presence of the County Engineer.

Before work can be started, the contractor must obtain a permit to excavate in County streets from the L.A. County Road Dept., 108 W. 2nd St. and make a deposit with the County Engineer, Rm 318, 253 So. Broadway sufficient to cover the cost of construction inspection and record plans.

Approval of this plan by the County of Los Angeles does not constitute a representation as to the accuracy of the location of or the existence or non-existence of any underground utility, pipe, or structure within the limits of this project. This note applies to all sheets.

If work is to be done in a State Highway, a permit must be obtained from the State of California, Division of Highways, 120 South Spring Street.

COUNTY OF LOS ANGELES, CALIFORNIA

Approved, John A. Lambie, County Engineer

Approved, A. M. Rawn

CHIEF ENGR. CO. SAN DIST. NO. 20

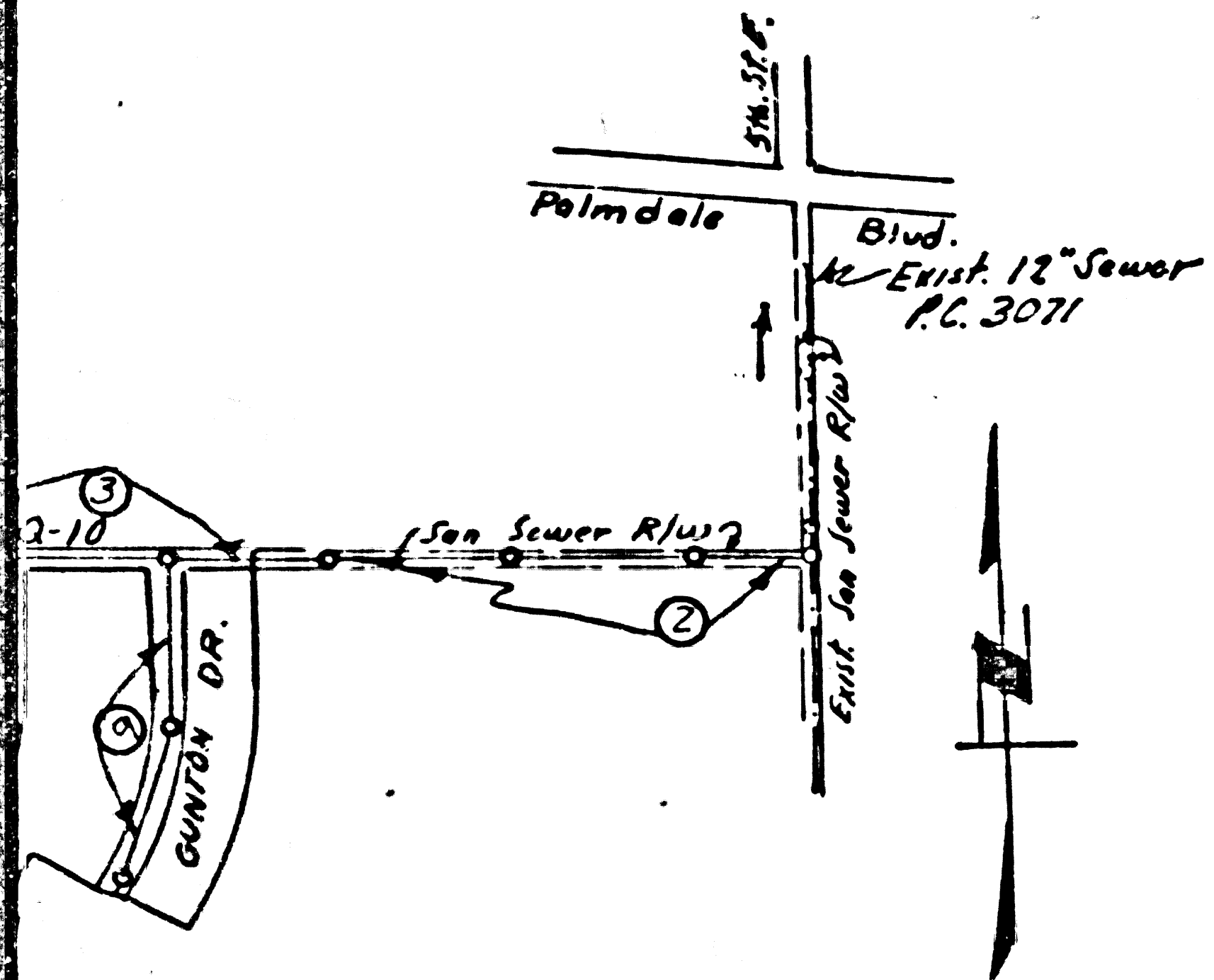
BY A. P. Cullen
Sanitation Engineer

BY J. Posthumus
Office Engineer

Checked By: R. E. Kuhns 11-26-56

Office of County Engineer, Reg. C. E. No. 7860

266A 782
Palmdale Blvd
482098



COLLECT CHARGES
AS INDICATED
11-26-56

| Sheet | Pages |
|-------|-------|
| 1 | 1-5 |
| 2 | 6-9 |

20189
500'

TRACT NO 20189

P.C. 3567

trim line

Rd.

SHT 1 of 2

P.C. 3567
Page 3

COLLECT CHARGES
AS INDICATED

2680

24.703

over Sewer

2675

2670

8

D.I.C.

Page 2

R12W

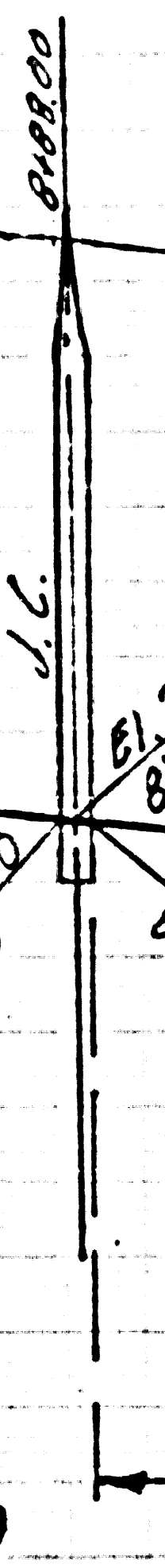
7

2675

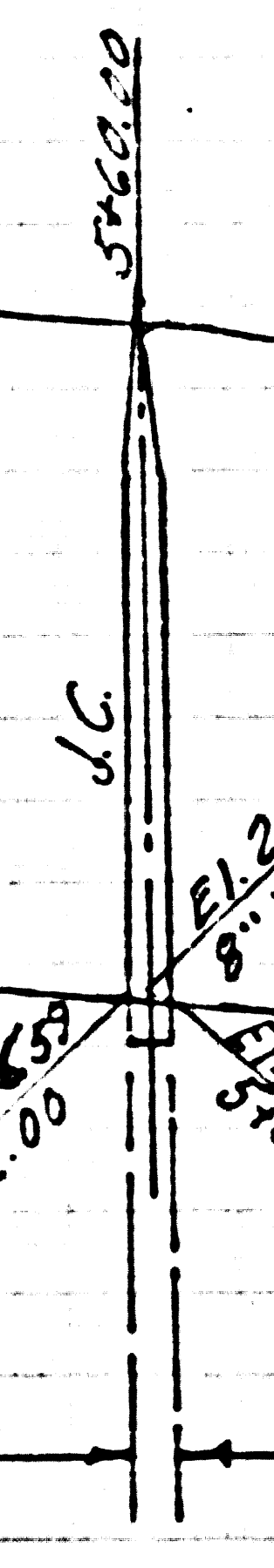
2670

2665

10



8" V.C.P.
0.96%



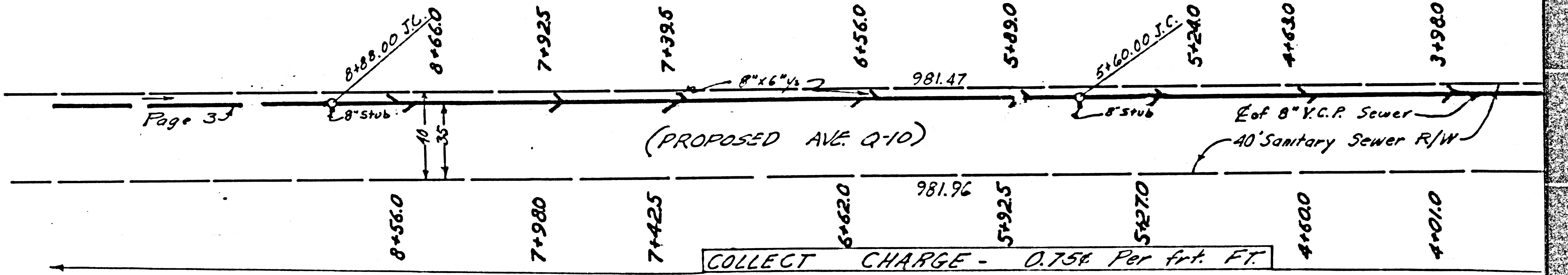
8" V.C.P.
0.96%

8" V.C.P.
0.96%

324.00 306.00

S.W. 1/4 SEC. 26 T6N

COLLECT CHARGE 0.75¢ Per frt. Ft.



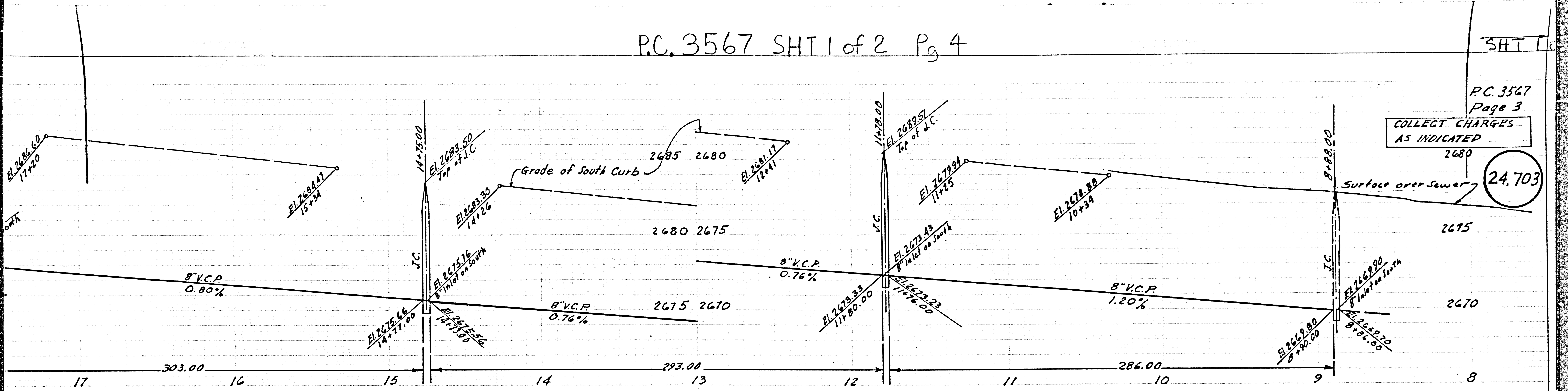
COLLECT CHARGE - 0.75¢ Per frt. Ft.

S.W. 1/4 SEC. 26 T6N

trim line

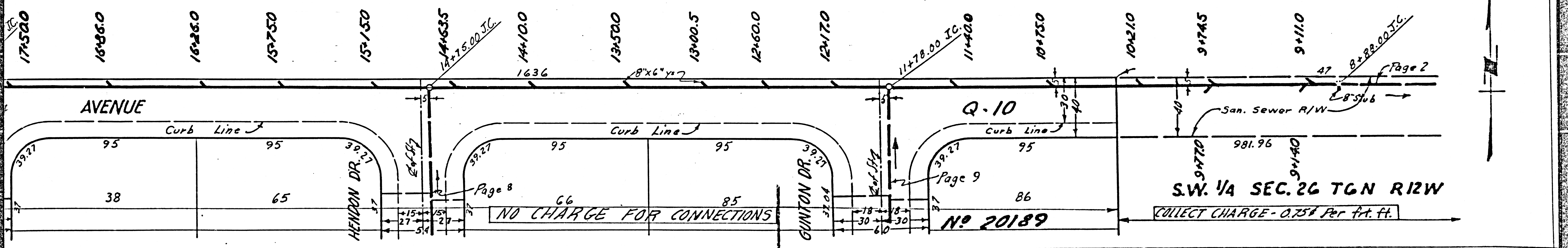
COLLECT CHARGES
AS INDICATED

24.703



COLLECT CHARGE - 0.75¢ Per ft. ft.

S.W. 1/4 SEC. 26 T6N R12W



S.W. 1/4 SEC. 26 T6N R12W

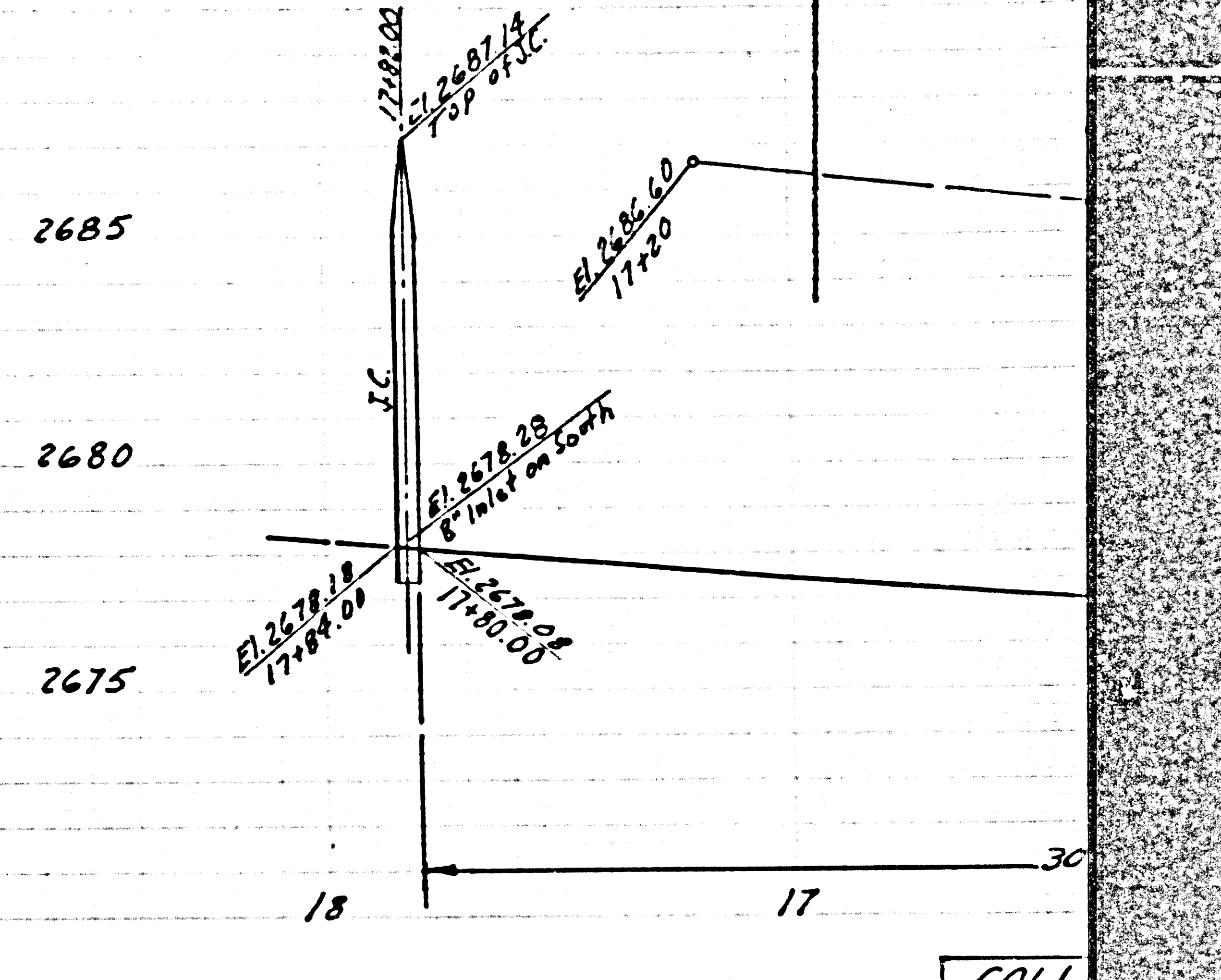
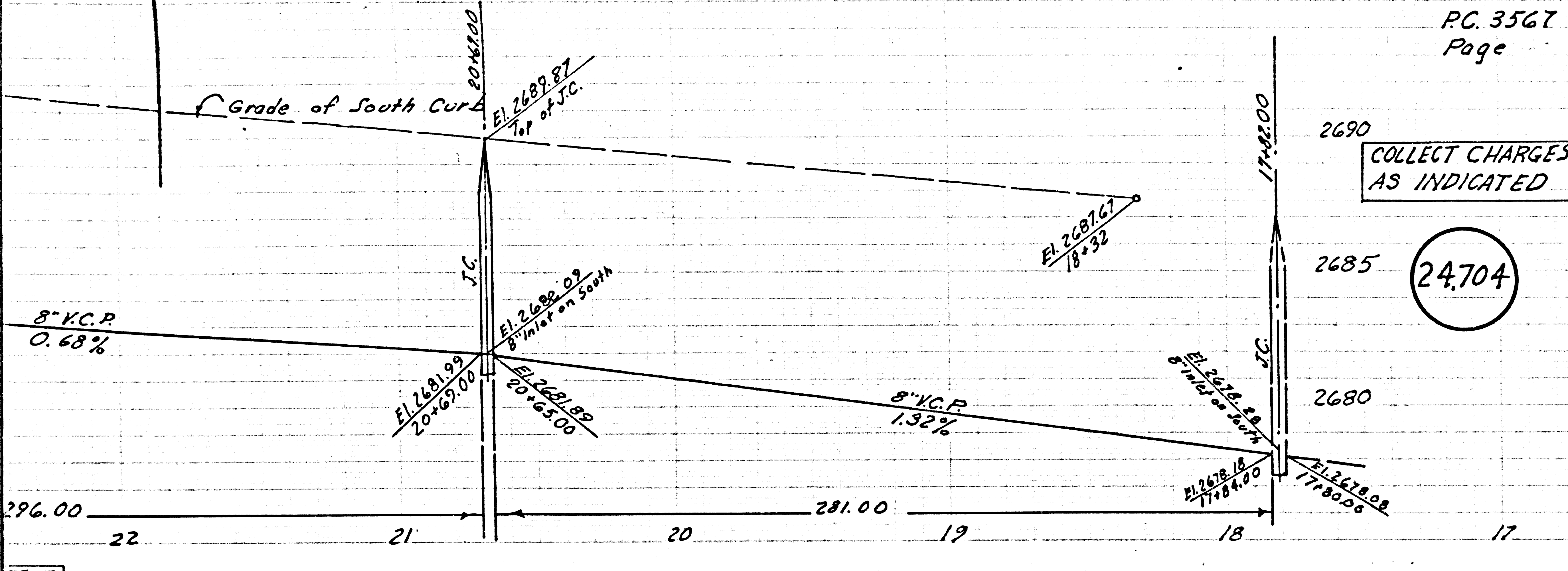
COLLECT CHARGE - 0.75¢ Per ft. ft.

SHT 1 of 2 P. 5

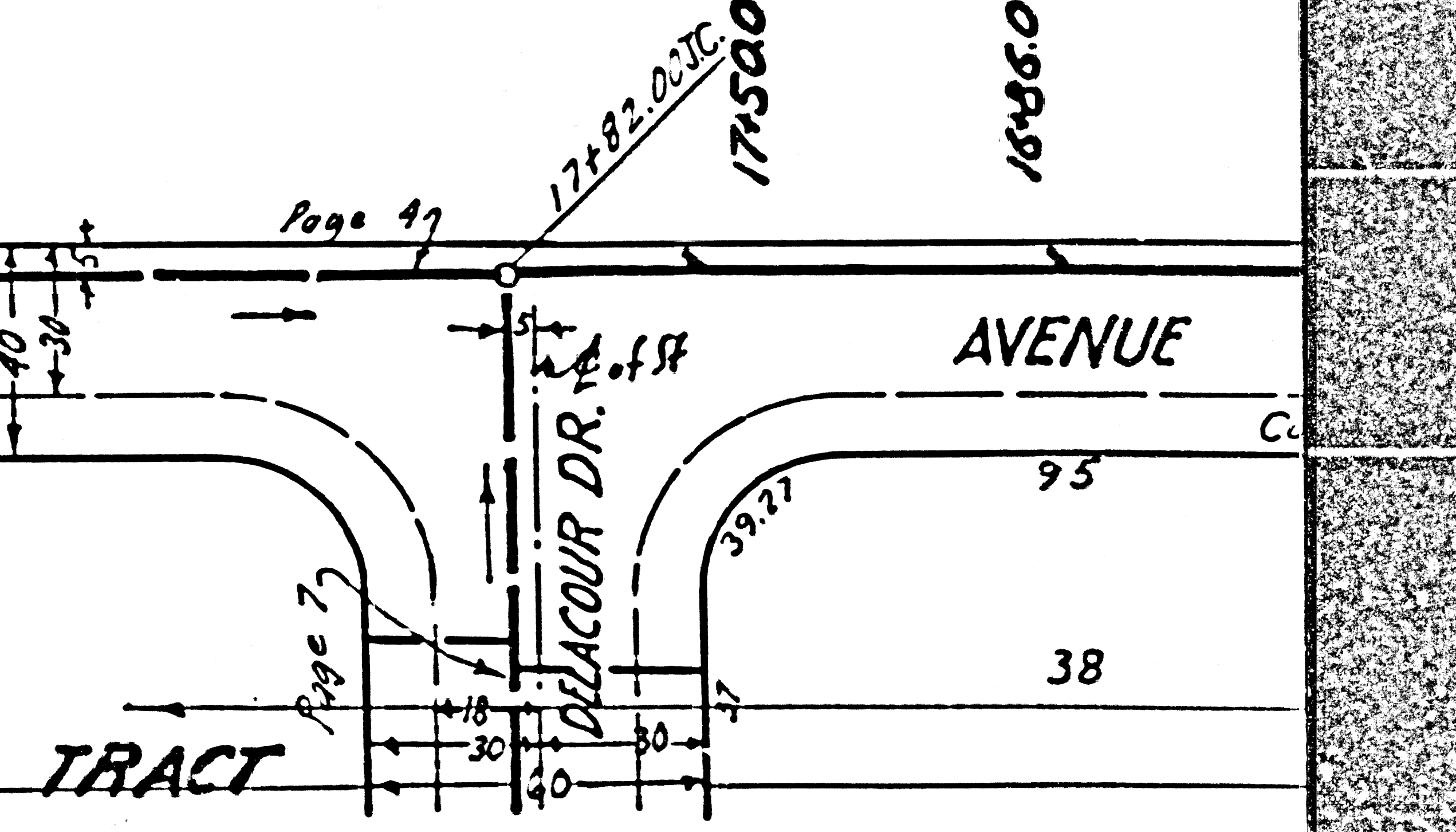
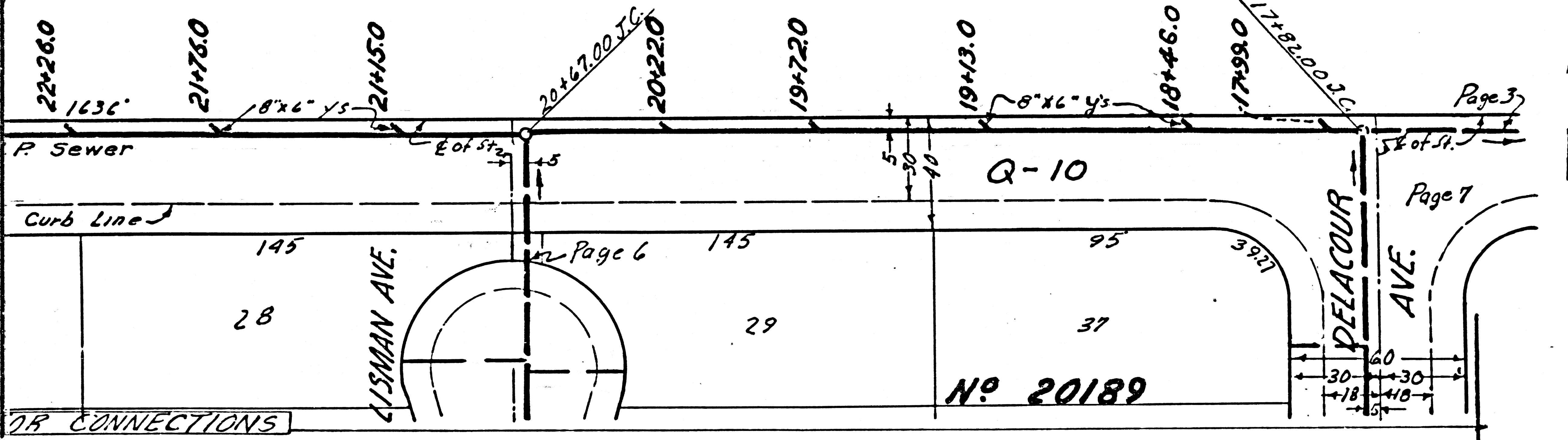
PC. 3567
Page

COLLECT CHARGES
AS INDICATED

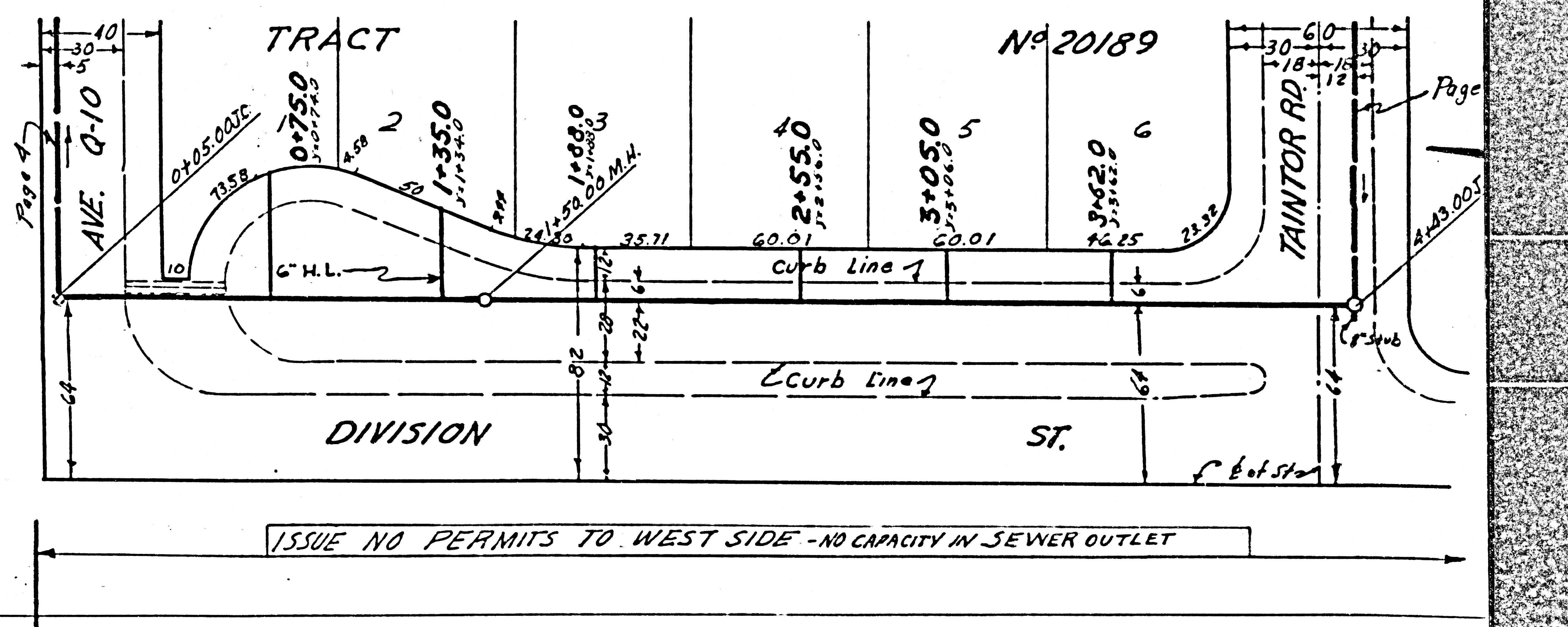
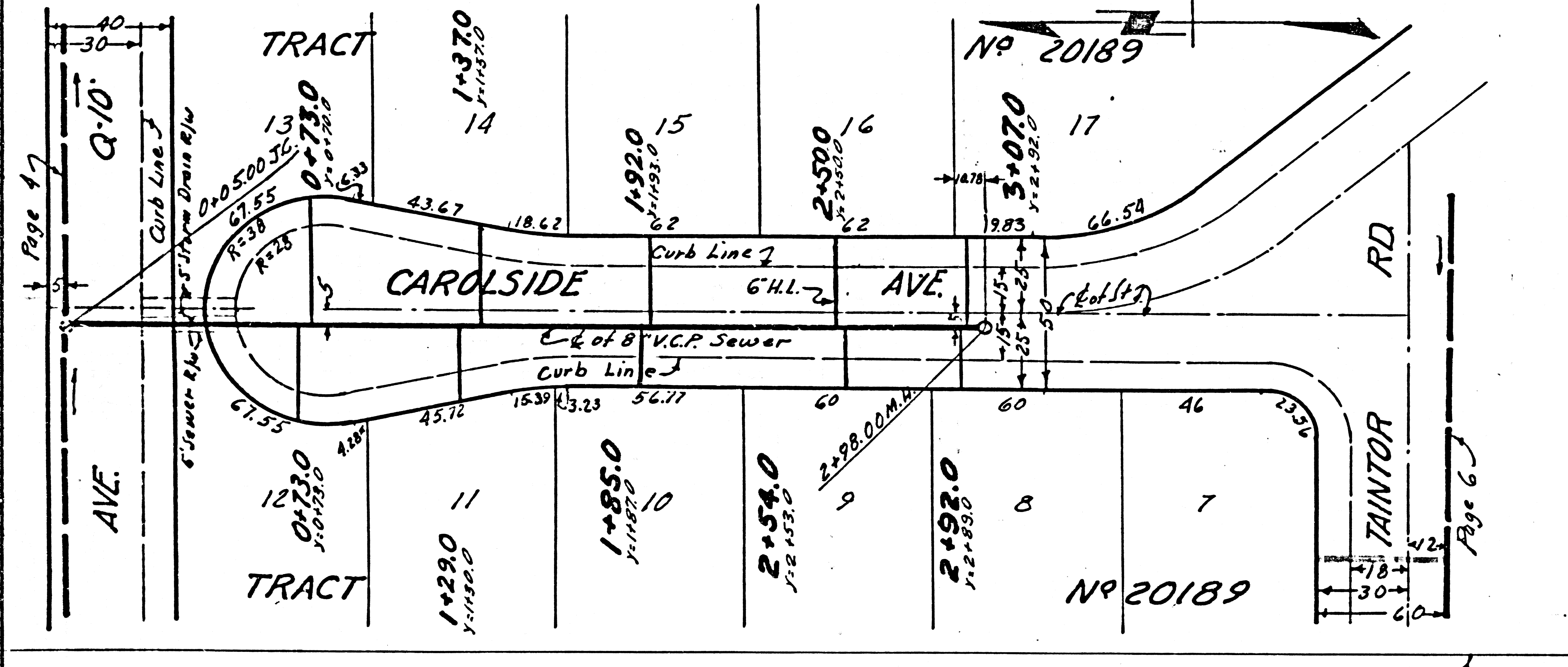
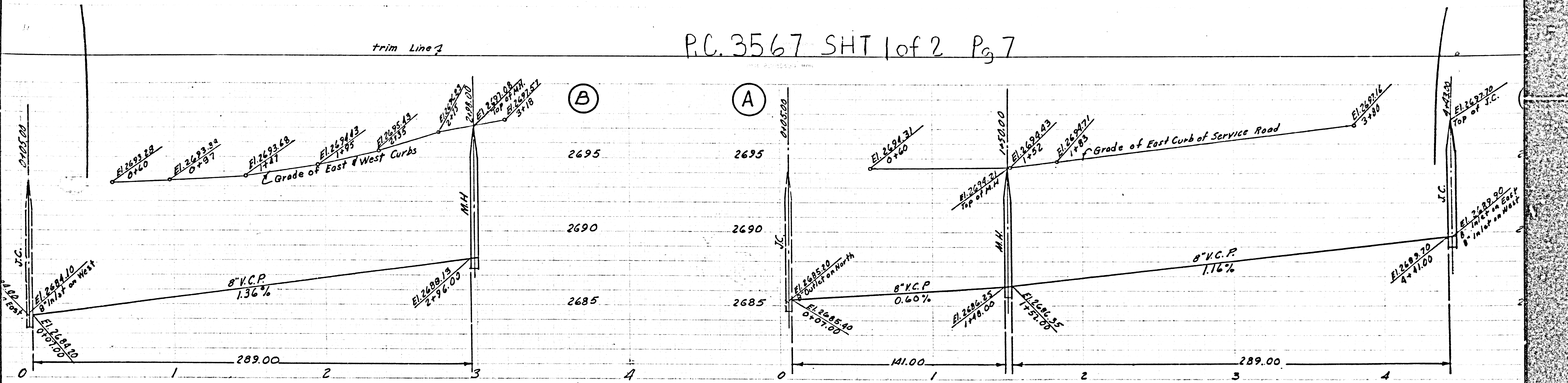
24,704



T6N. R12W



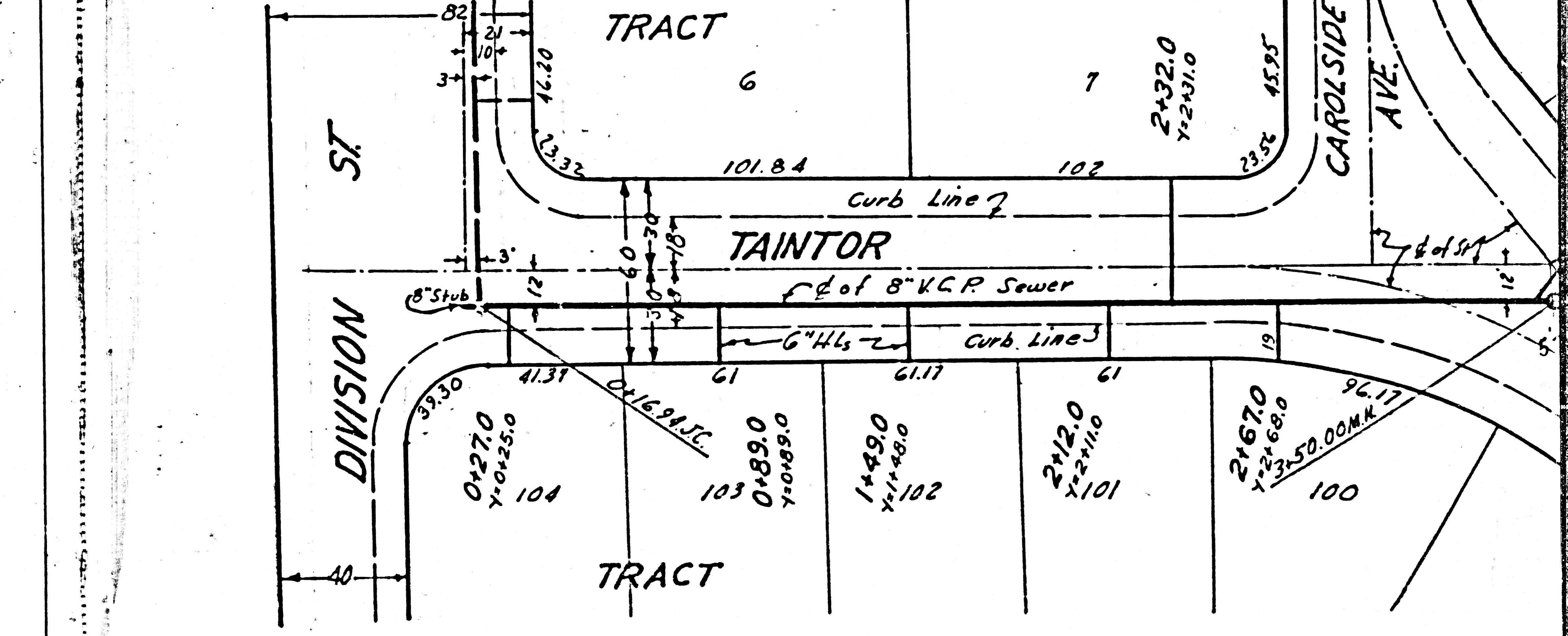
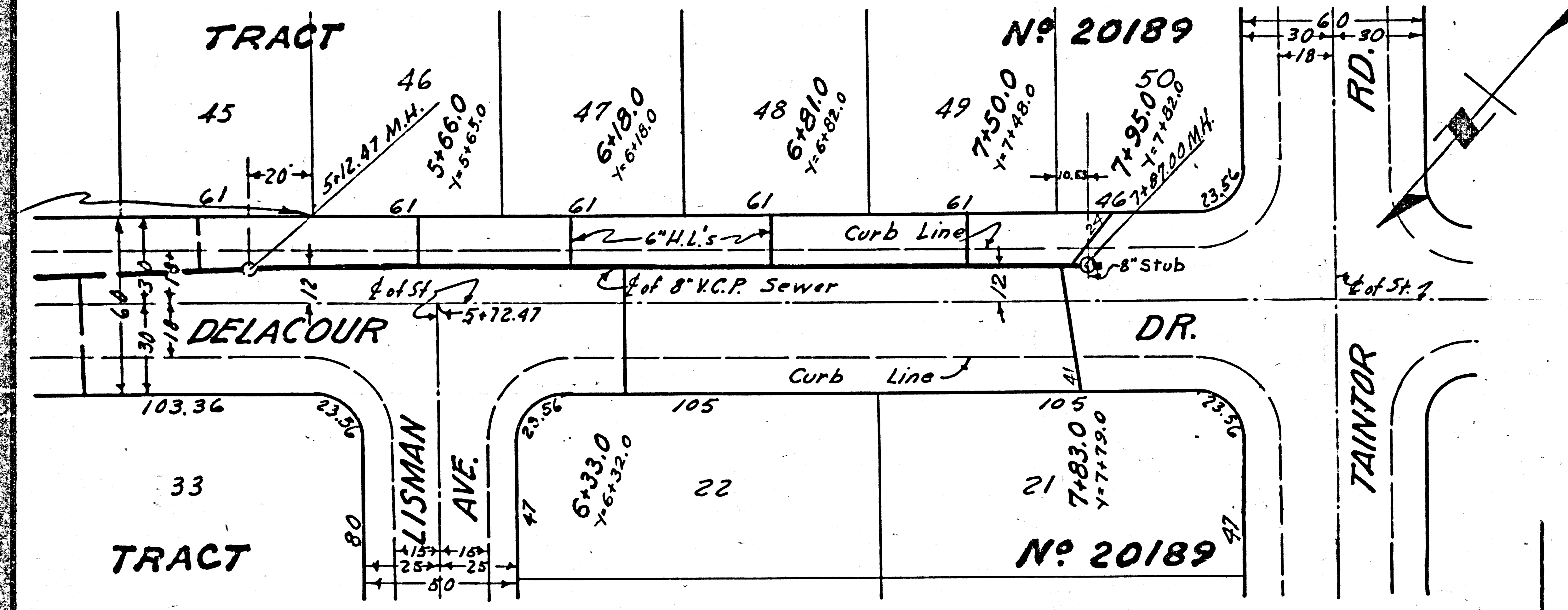
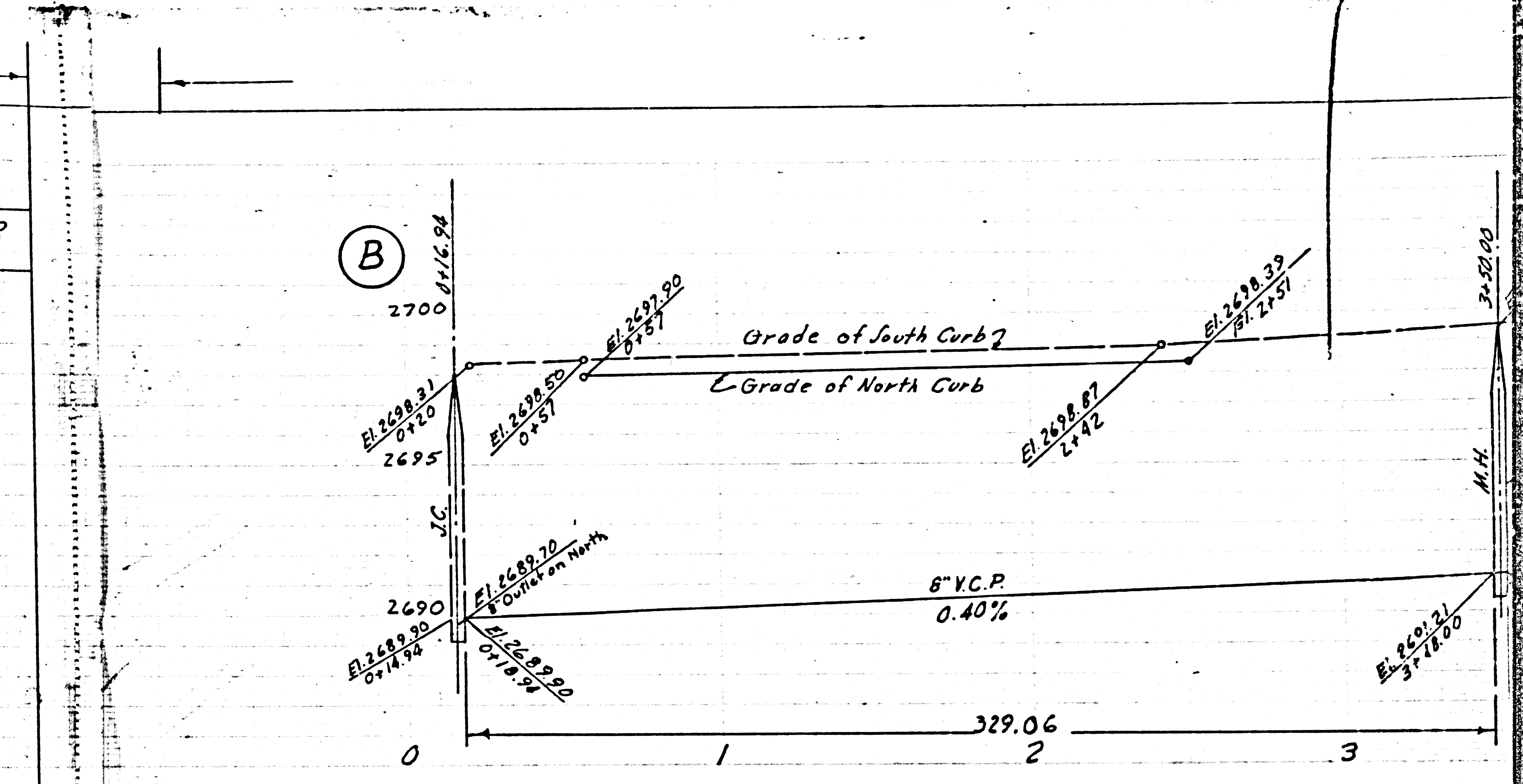
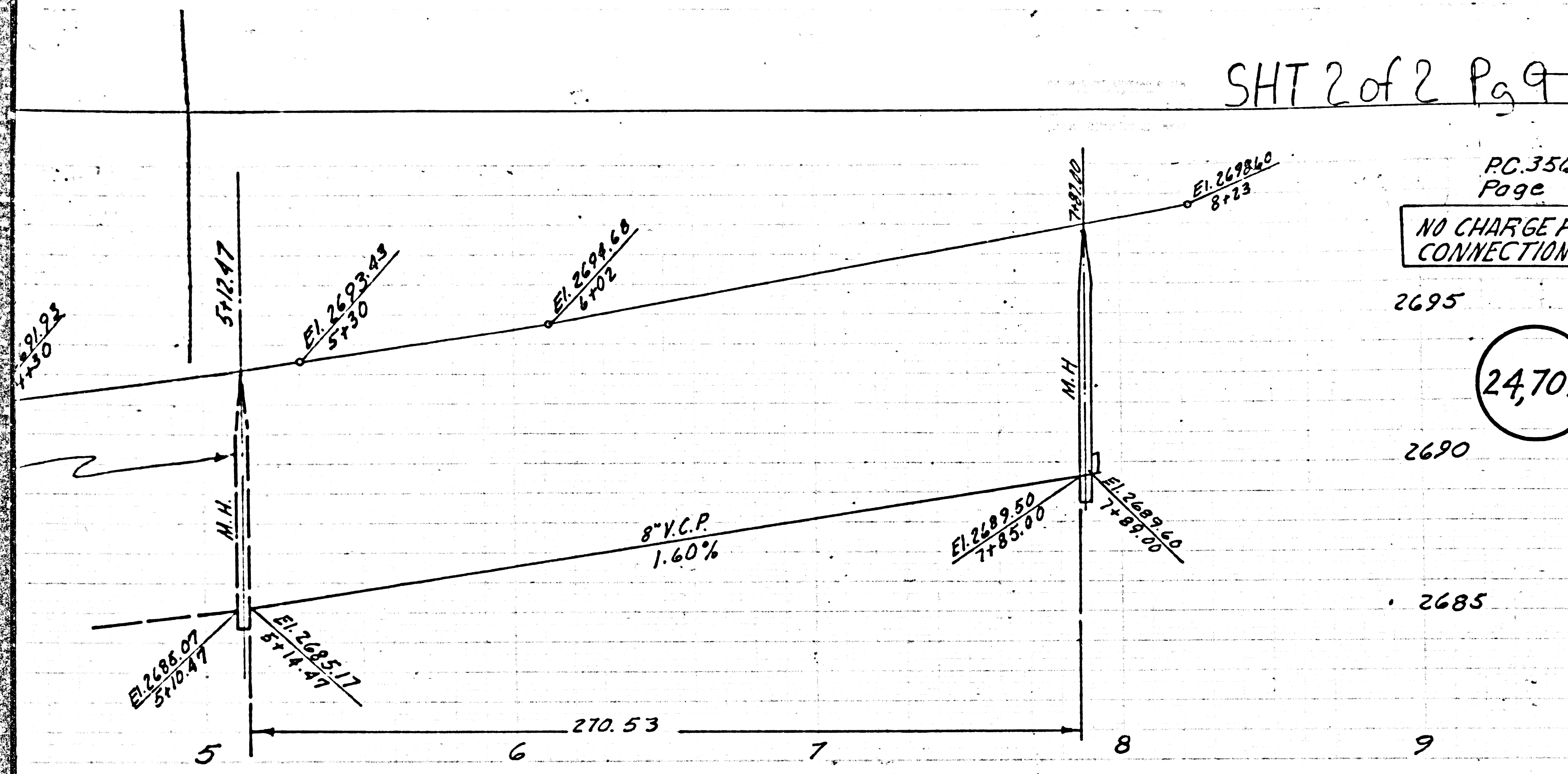
PC. 3567 SHT 1 of 2 Pg 7

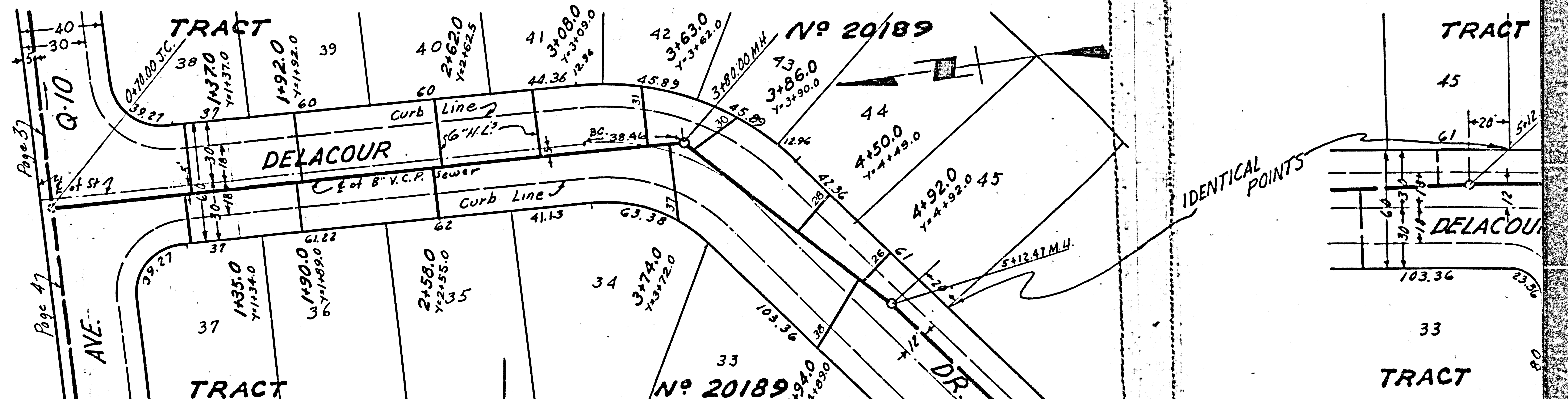
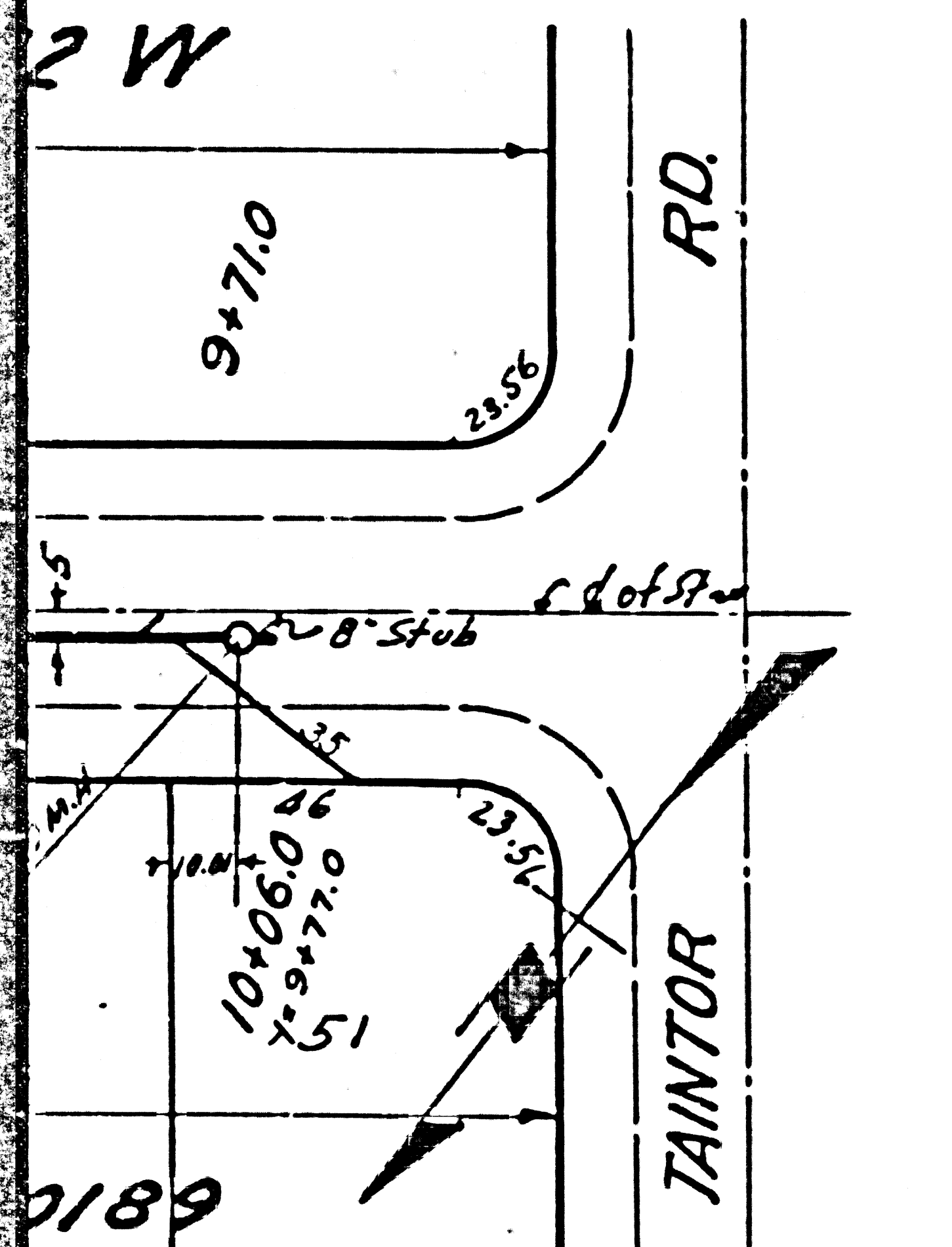
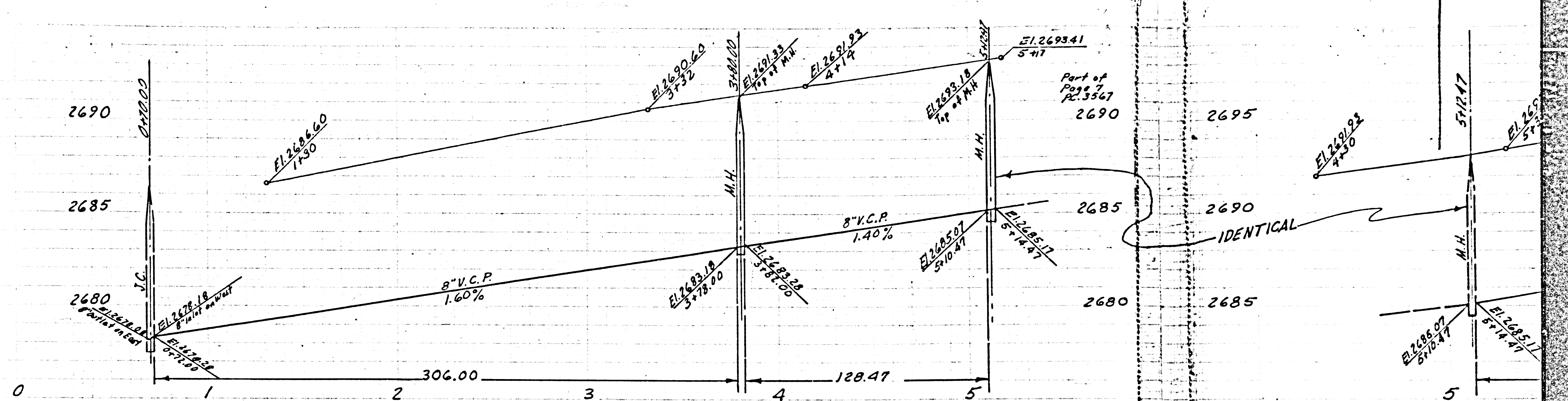
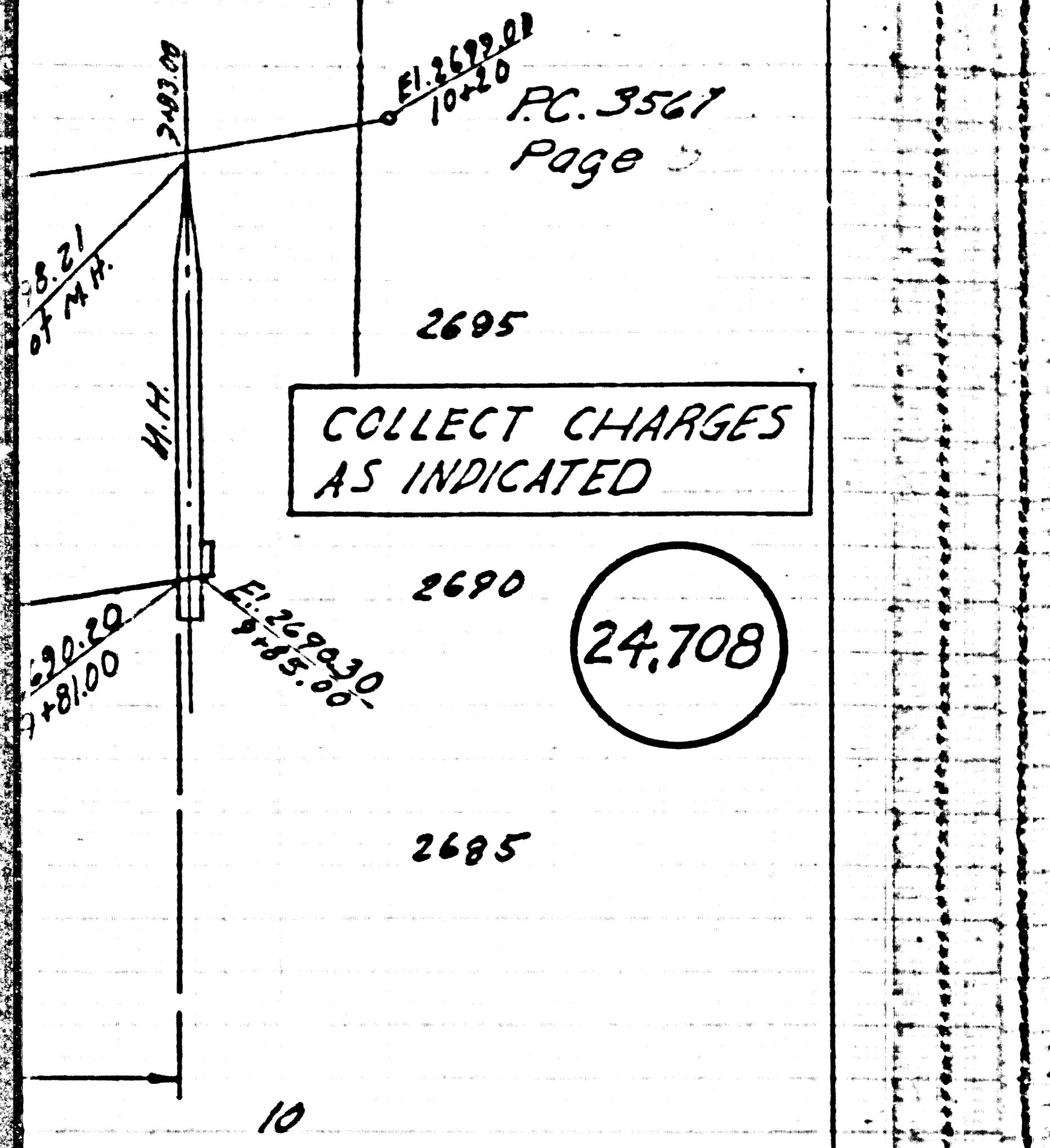


PG. 3567
Page

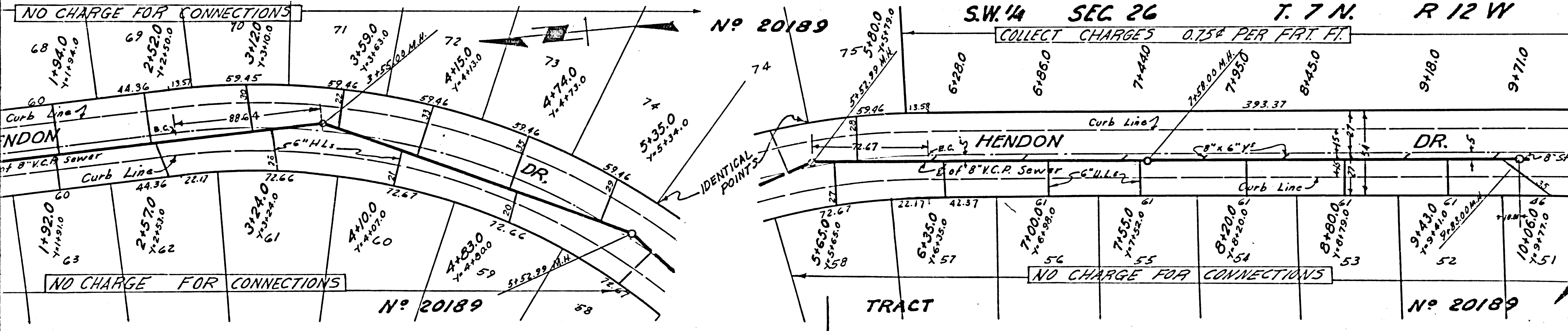
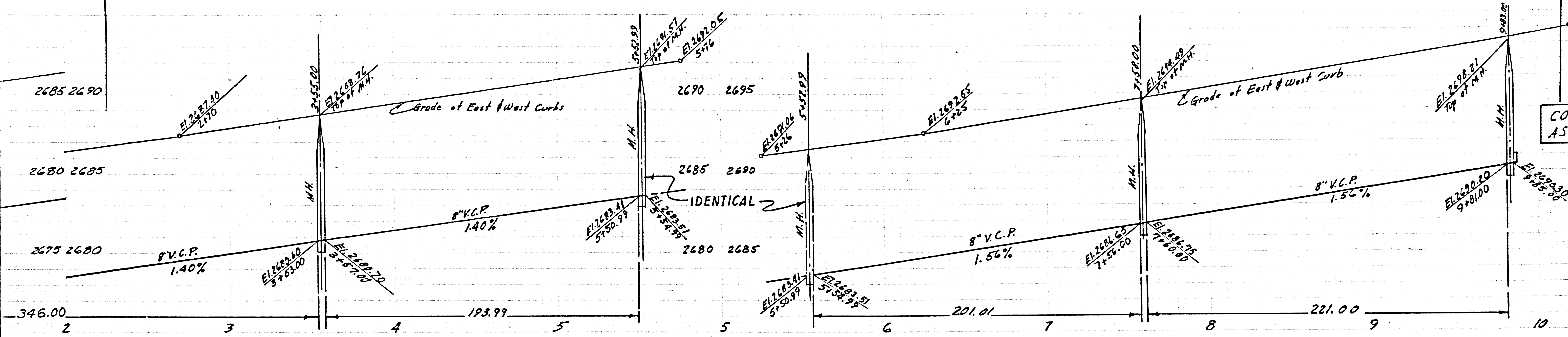
NO CHARGE FOR CONNECTIONS

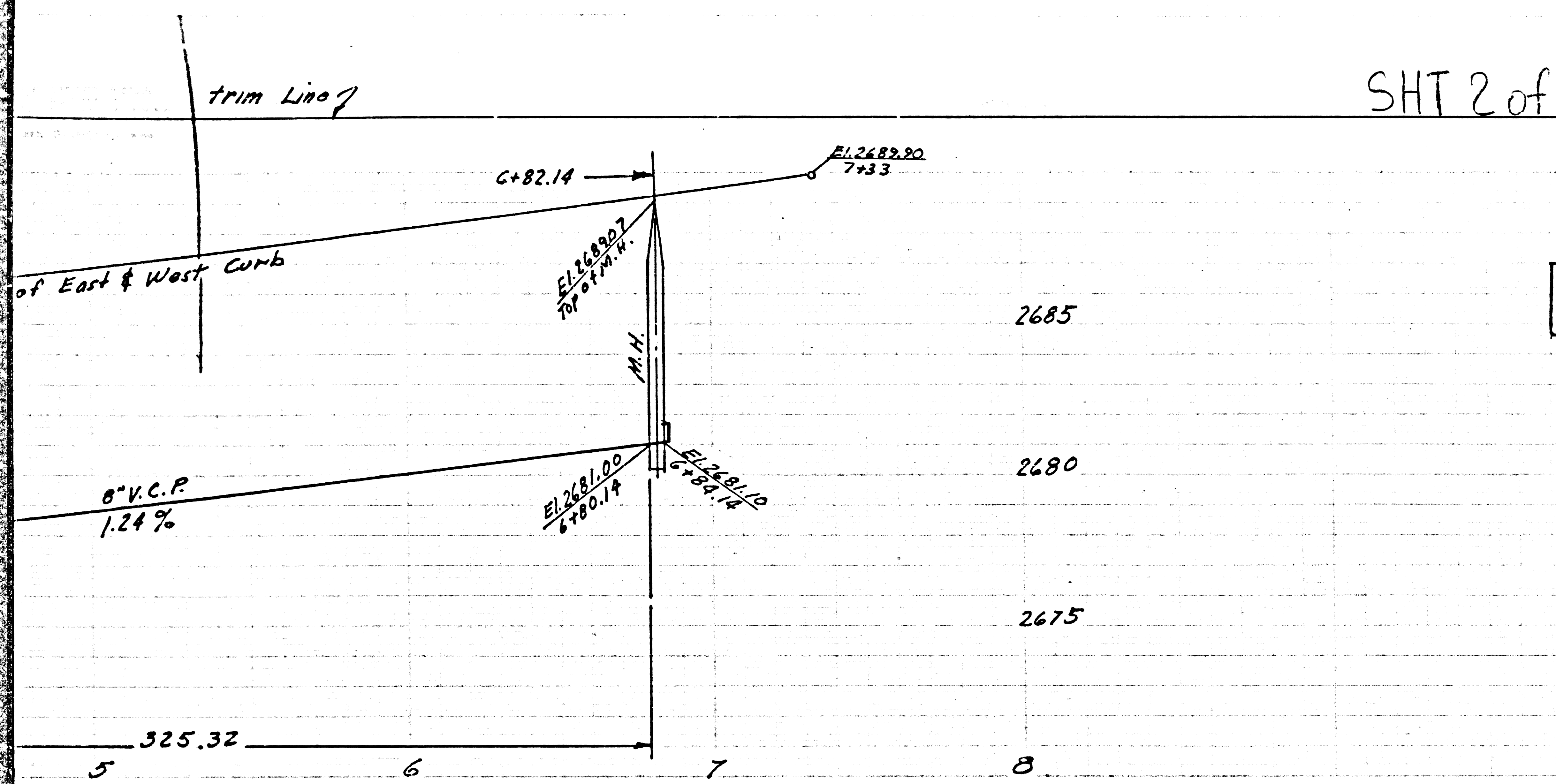
24,707





PC.3567 - SHT 2 of 2 Pg 11

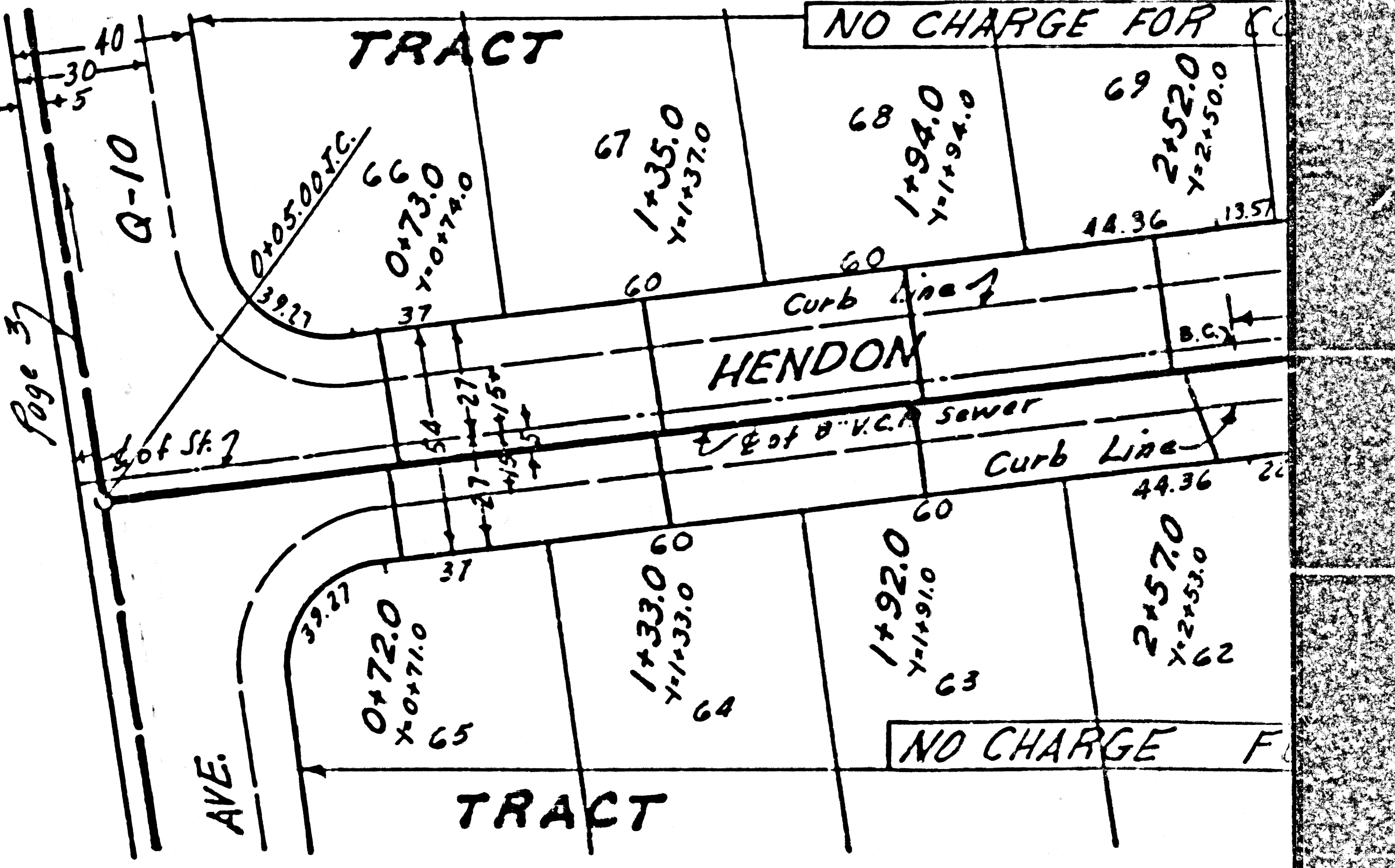
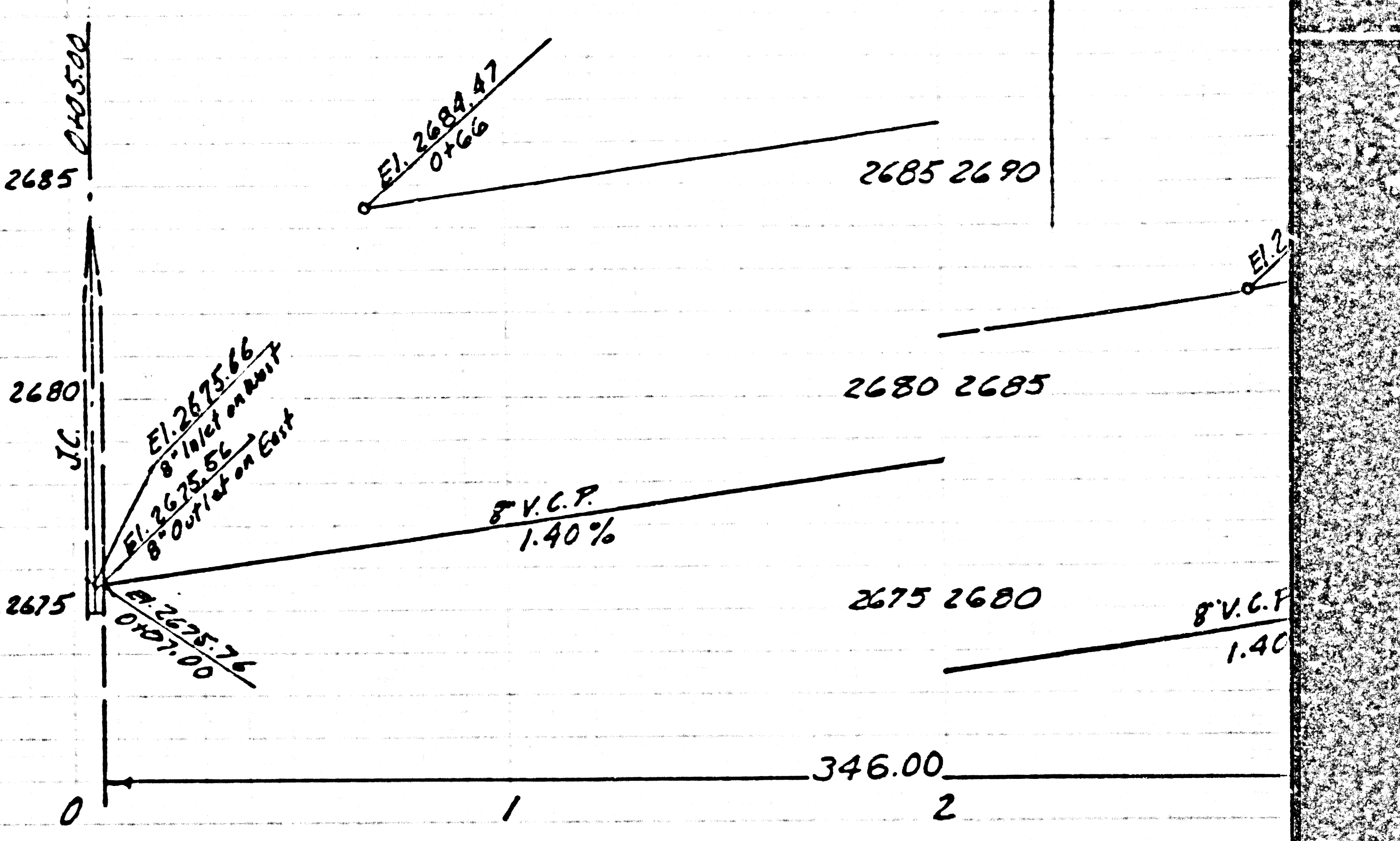
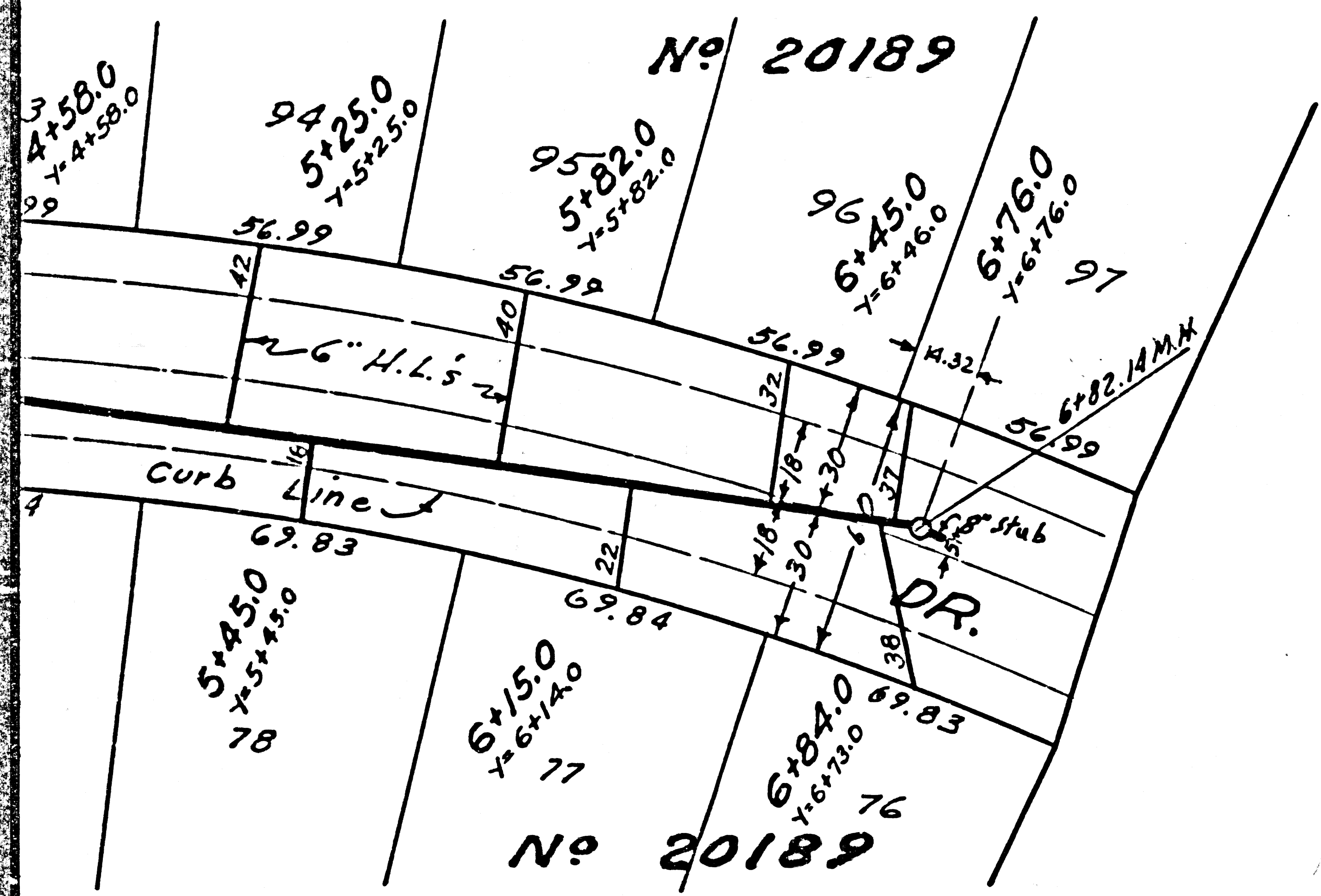




P.C. 3567
Page :

NO CHARGE FOR CONNECTIONS

24,709



P.C. 3567 SHT 2 of 2 Pg 13

2685

2680

2675

El. 2681.17
0+66

El. 2683.82
2+66

El. 2684.82
TOP of M.H.

Grade of East & West Curb

8" V.C.P.
1.24%

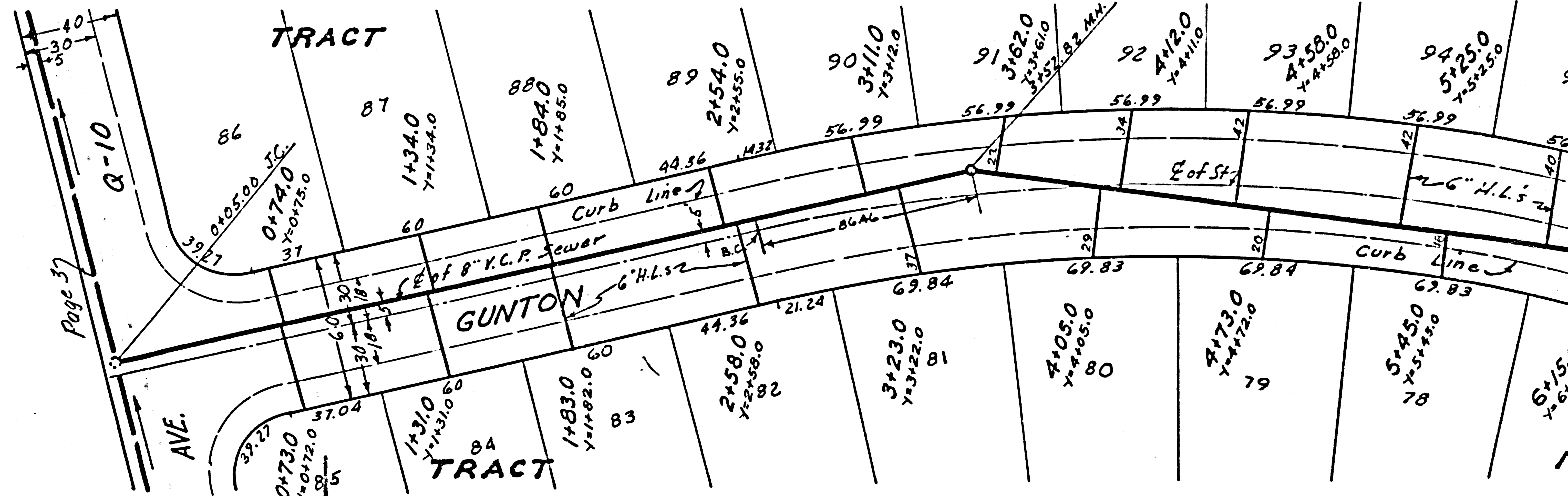
8" V.C.P.
1.00%

El. 2676.87
3+50.82

El. 2674.97
3+74.00

343.82

325.32



Page 37
AVE.
Q-10

TRACT

GUNTON

TRACT

Trim Line

Trim Line