

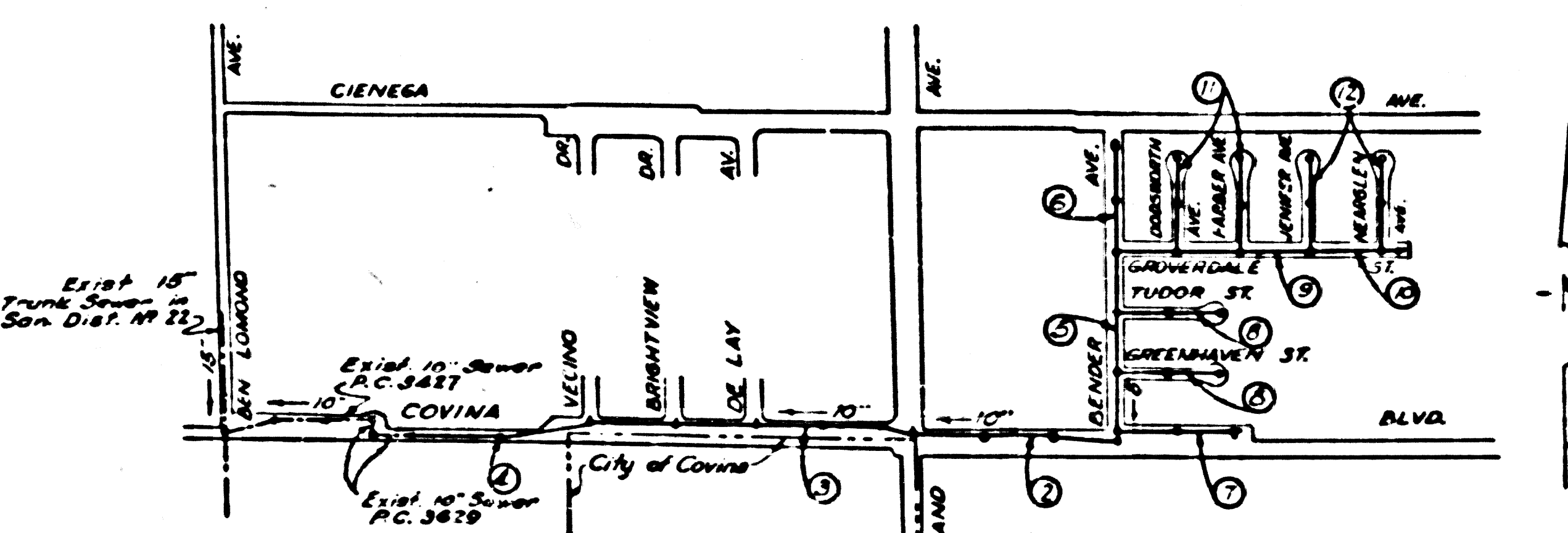
Bench Mark: S.G. 52-10, Elev. 638.247
 Covina Blvd & Grand Ave, S.E. corner
 2' W. of E. end of conc. headwall

INDEX TABLE

SHEET	PAGES
1	1-3
2	6-10
3	11-12

CONNECTION CHARGES
 AS INDICATED
Redden 7-27-55

- SAN DIMAS BLDG. DISTRICT NO. 10
 NOTE:
- Provide stakes on the property lines or property lines produced at right angles to the sewer line at the center line of each manhole.
 - No representative of the County Engineer will survey or layout any portion of the work.
 - The owner or his authorized representative shall furnish the County Engineer with grade sheets and stations for all house laterals and Y branches and shall provide stakes for them at their proper locations with stationing plainly marked. Any change in location shall be requested in writing by the owner or his representative.
 - No revisions shall be made in these plans without the approval of the County Engineer.
 - Use standard manhole frames and covers, S-a-117.
 - Use standard strength pipe except as noted.
 - Use cement mortar for all vitrified clay pipe joints.
 - Resurface all trench within paved area to meet L.A. County Road Dept. or California State Highway Dept. requirements in accordance with permit.
 - Encase four feet of sewer at points of interference with poles, S-a-119.
 - House laterals to be constructed with inverts at property line _____ feet below curb grade except as noted.
 - All structures shall be brick sewer structures, S-a-104.
 - For allowable leakage test, use Formula No. _____, Spec's., Sec. 51.
 - Manhole tops in unimproved Rights-of-Way to be 6" above finish grade.



INDEX MAP
 SCALE: 1"=600'
 TRACT NO. 21263

Redden 1-19-56

PROFILE, ALIGNMENT AND GRADE OF
 SANITARY SEWERS
 TO BE CONSTRUCTED FOR
 TRACT NO. 21263
 PRIVATE CONTRACT NO. 3569
 W. S. 47-48
 3 SHEETS
 Scale: VERT. 1"=4'
 HORIZ. 1"=40'
 AUGUST 1955
 PREPARED IN THE OFFICES OF
 JOHN S. GREGORY CO.-CIVIL ENGINEERS
 152 E. GLENHORN ST. PASADENA 2, CALIF.
John S. Gregory
 No. C.E. No. 9359

P.C. 3569
 PAGE 1

22,127

TRACT 21263

NOTE:

Grades to which this improvement is to be constructed are shown on plans and profiles. Grade points for top of curbs, center line of streets, or center line of alleys are shown by circles on profiles. At all points between designated points the grade shall be established so as to conform to a straight line drawn between said designated points.

Elevations are in feet above U.S.G.S. datum or mean sea level.

This drawing and the data hereon are hereby made a part of the specifications.

Work shall be constructed according to specifications on file in the office of the County Engineer and shall be prosecuted only in the presence of the County Engineer.

Before work can be started, the contractor must obtain a permit to excavate in County streets from the L.A. County Road Dept., 108 W. 2nd St. and make a deposit with the County Engineer, Rm. 318, 253 S. Broad Street, sufficient to cover the cost of construction inspection and record plans.

Approval of this plan by the County of Los Angeles does not constitute a representation as to the accuracy of the location of or the existence or non-existence of any underground utility, pipe, or structure within the limits of the project. This note applies to all sheets.

If work is to be done in a State Highway, a permit must be obtained from the State of California, Division of Highways, 120 South Spring Street.

COUNTY OF LOS ANGELES, CALIFORNIA

Approved, William J. Fox, County Engineer
W. J. Fox
 Chief Engr. CO. SAN. DIST. NO. 22
 Approved, A. M. Ream
A. M. Ream
 Chief Engr. CO. SAN. DIST. NO. 22
 Checked by: *Redden 7-27-55*
 Office of County Engineer, Dep. C. E. No. 2842

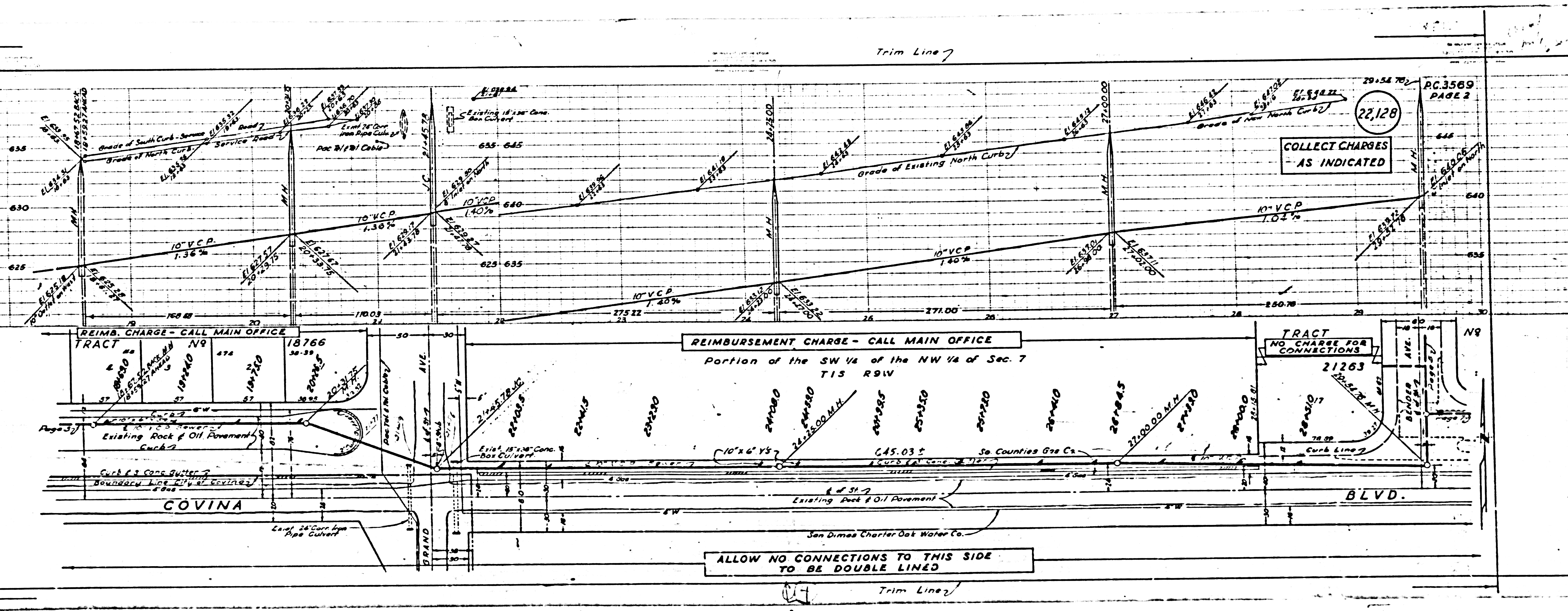
P.C. 3569
 6956 7A
 1033282-1

Trim Line 7

22,128

COLLECT CHARGES
AS INDICATED

PC.3589
PAGE 2



REIMBURSEMENT CHARGE - CALL MAIN OFFICE

Portion of the SW 1/4 of the NW 1/4 of Sec. 7
T15 R9W

TRACT
NO CHARGE FOR
CONNECTIONS

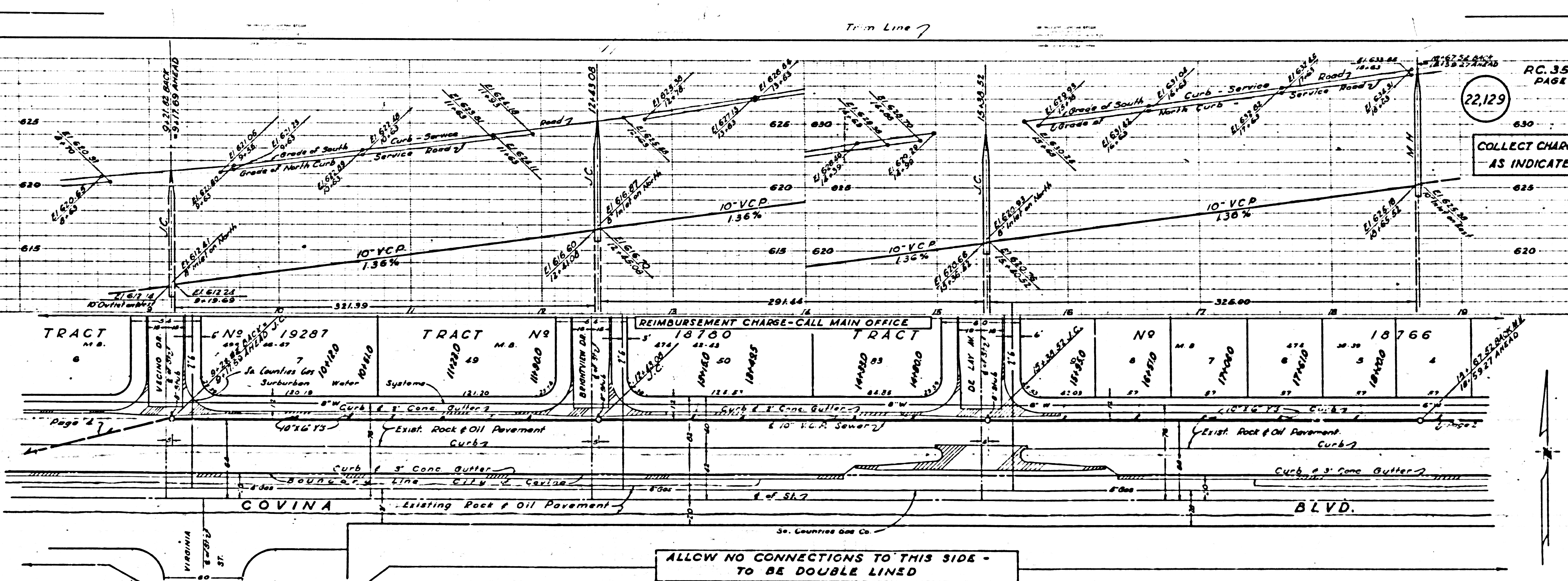
21263

ALLOW NO CONNECTIONS TO THIS SIDE
TO BE DOUBLE LINED

Trim Line 7

CHARGES
INDICATED

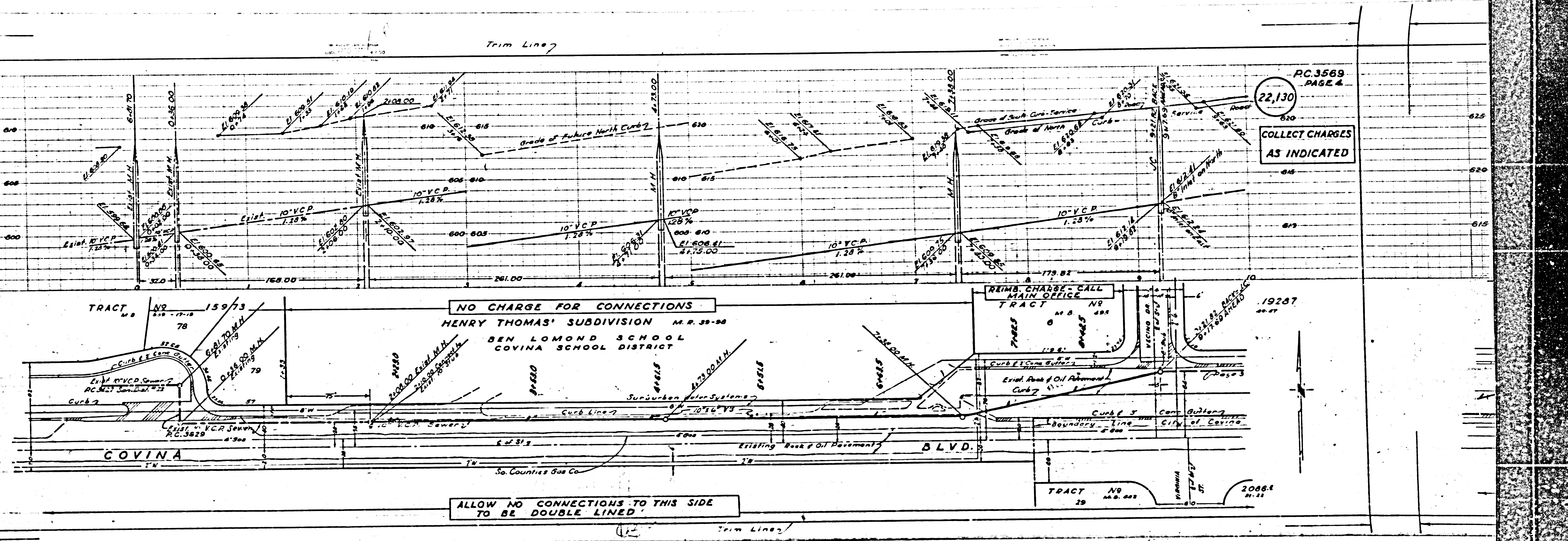
22,129
COLLECT CHARGES
AS INDICATED



ALLOW NO CONNECTIONS TO THIS SIDE -
TO BE DOUBLE LINED

Train Line

3569
E 6
CHARGE
FOR
CORRECTIONS



PC 3569
PAGE 4
22,130

COLLECT CHARGES
AS INDICATED

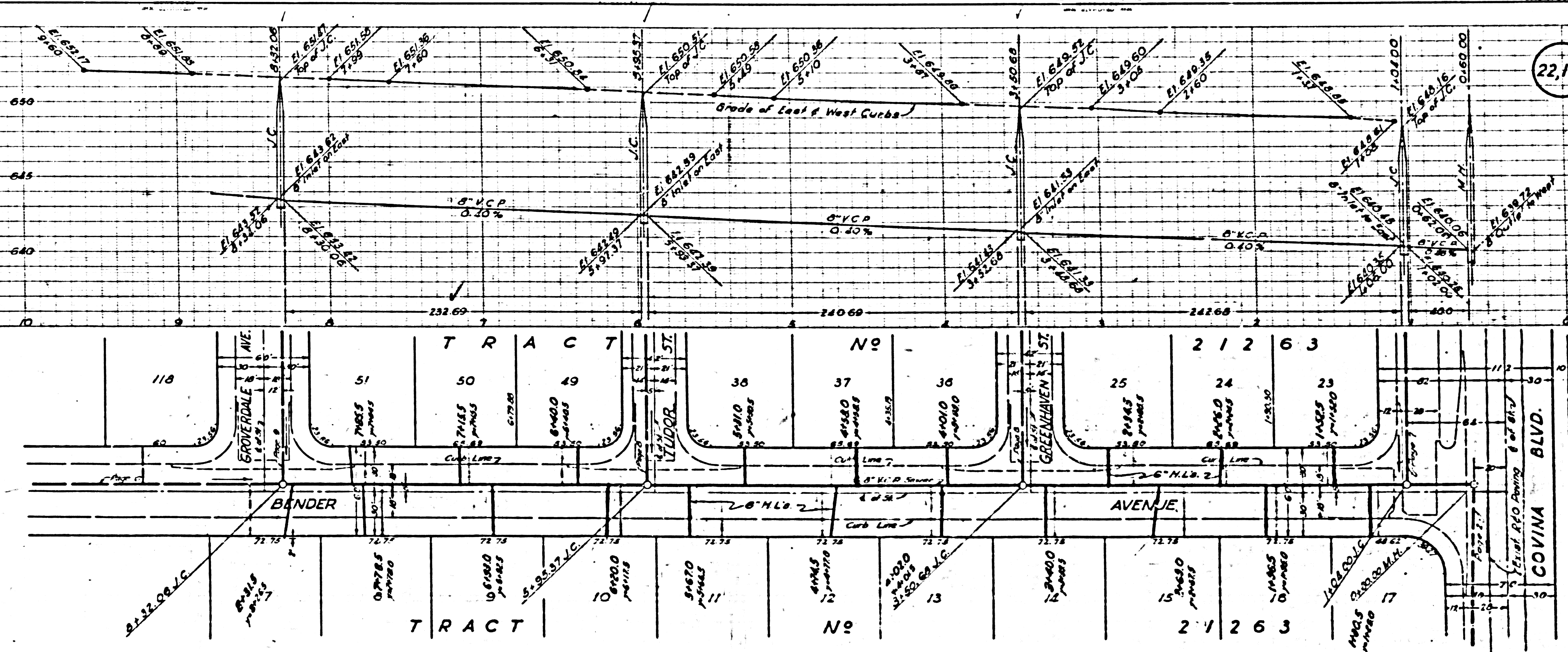
NO CHARGE FOR CONNECTIONS
HENRY THOMAS' SUBDIVISION M.R. 39-98
BEN LOMOND SCHOOL
COVINA SCHOOL DISTRICT

REIMB. CHARGE - CALL
MAIN OFFICE
TRACT NO 19267

ALLOW NO CONNECTIONS TO THIS SIDE
TO BE DOUBLE LINED

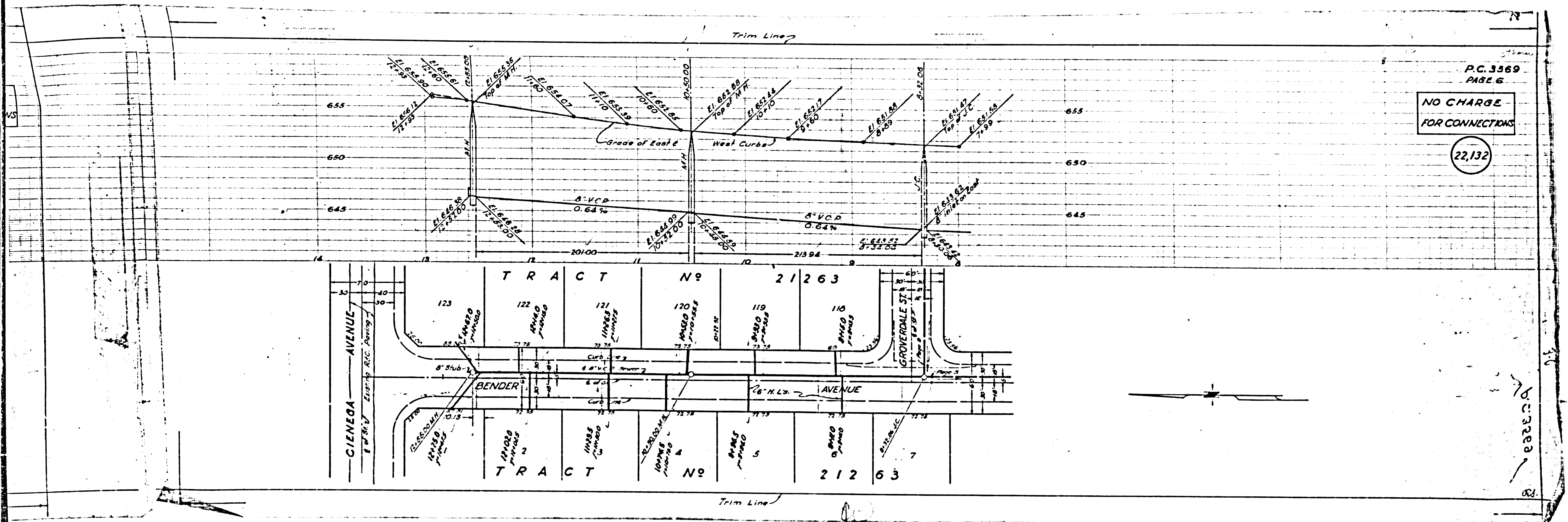
TRACT NO 20884
M.B. 402
11-11

PC 3569



PC 3569
PAGE 5
22,131
NO CHARGE
FOR
CONNECTIONS

LU



P.C. 3369
PAGE 6

NO CHARGE
FOR CONNECTIONS

22,132

20322

P.C. 3569
PAGE 8

NO CHARGE
FOR
CONNECTIONS

22,134

NO CHARGE
FOR
CONNECTIONS

22,133

REVISED CURB GRADIENT AND SLOPE
GRADIENT OF GARDENWAY ST. AND
THURSTON ST.
CHECKED BY: J.V. BUCKLE, P.E.
DATE: 11/11/06

ANGLO
PARANATO 31
4+51.00 M.H.

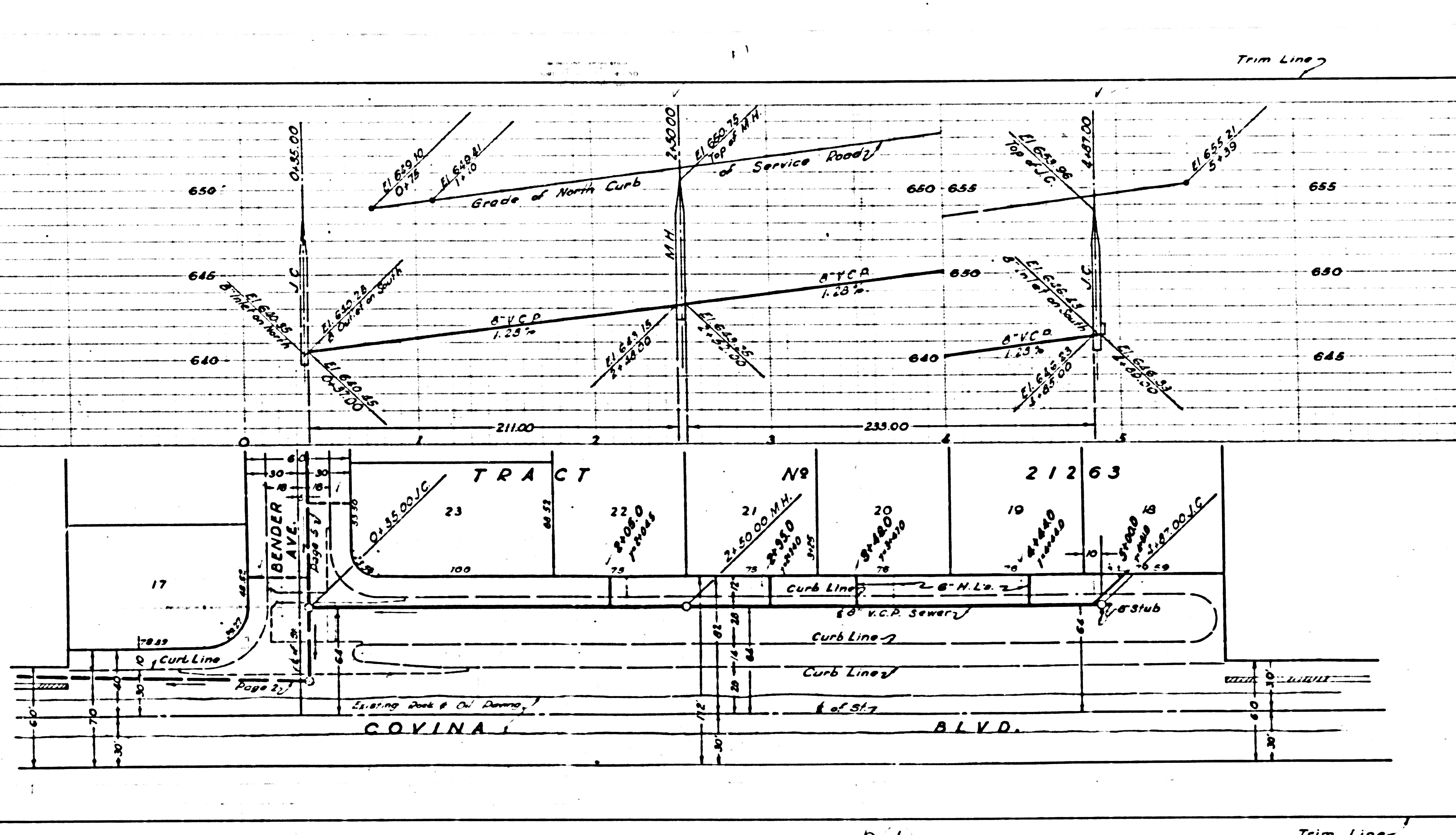
4+64.0
THURSTON ST

30

P.C. 3569
PAGE 7

NO CHARGE
FOR CONNECTIONS

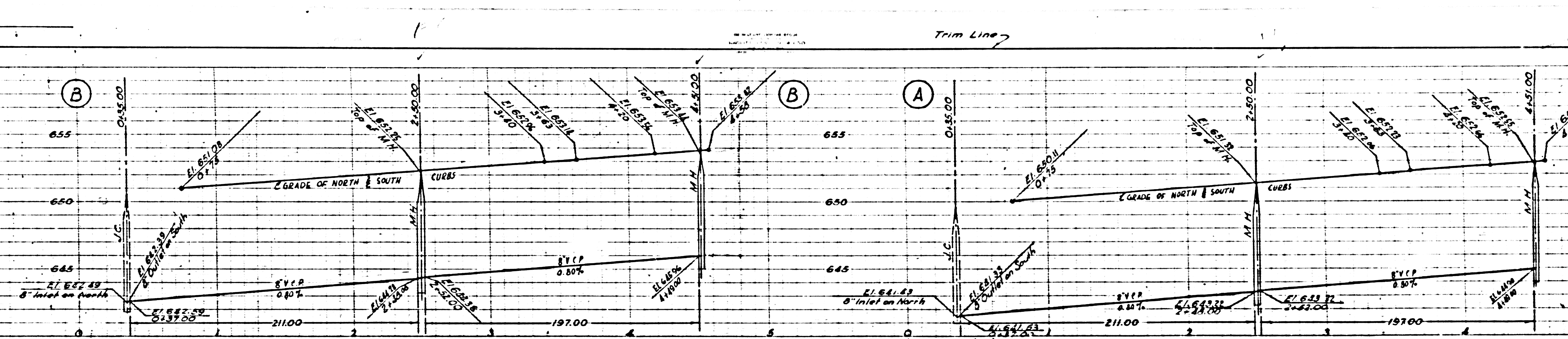
22,133



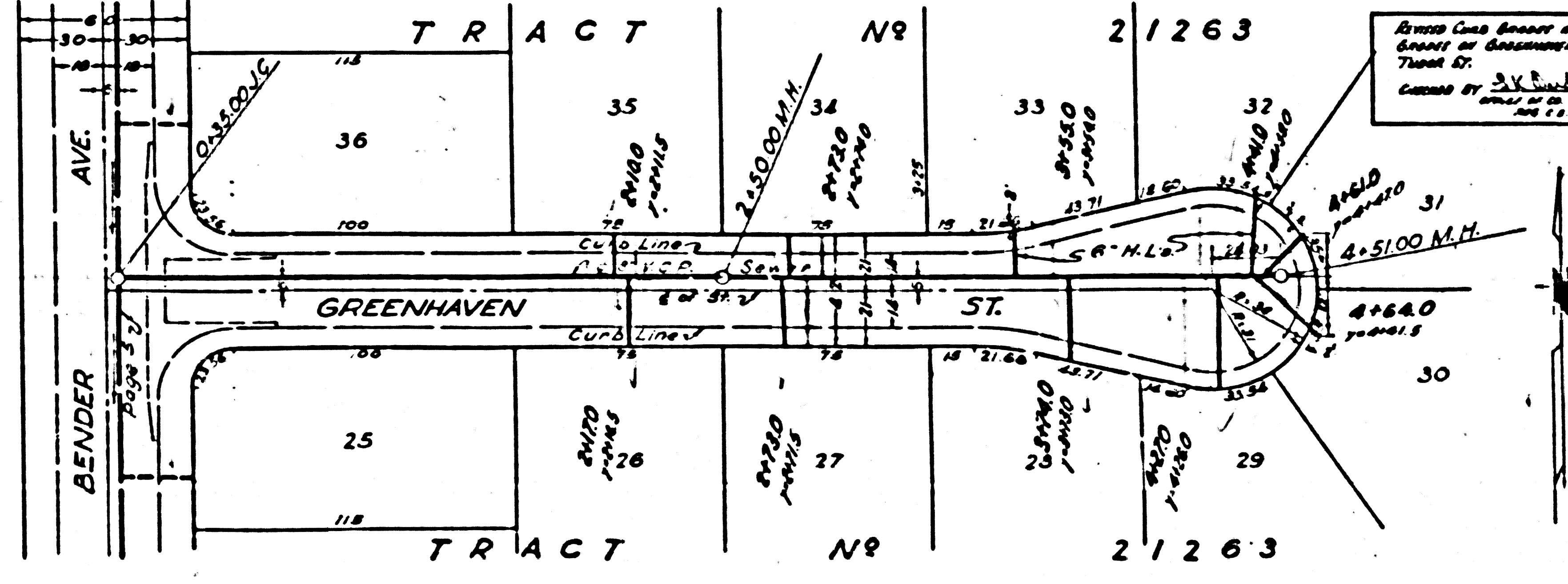
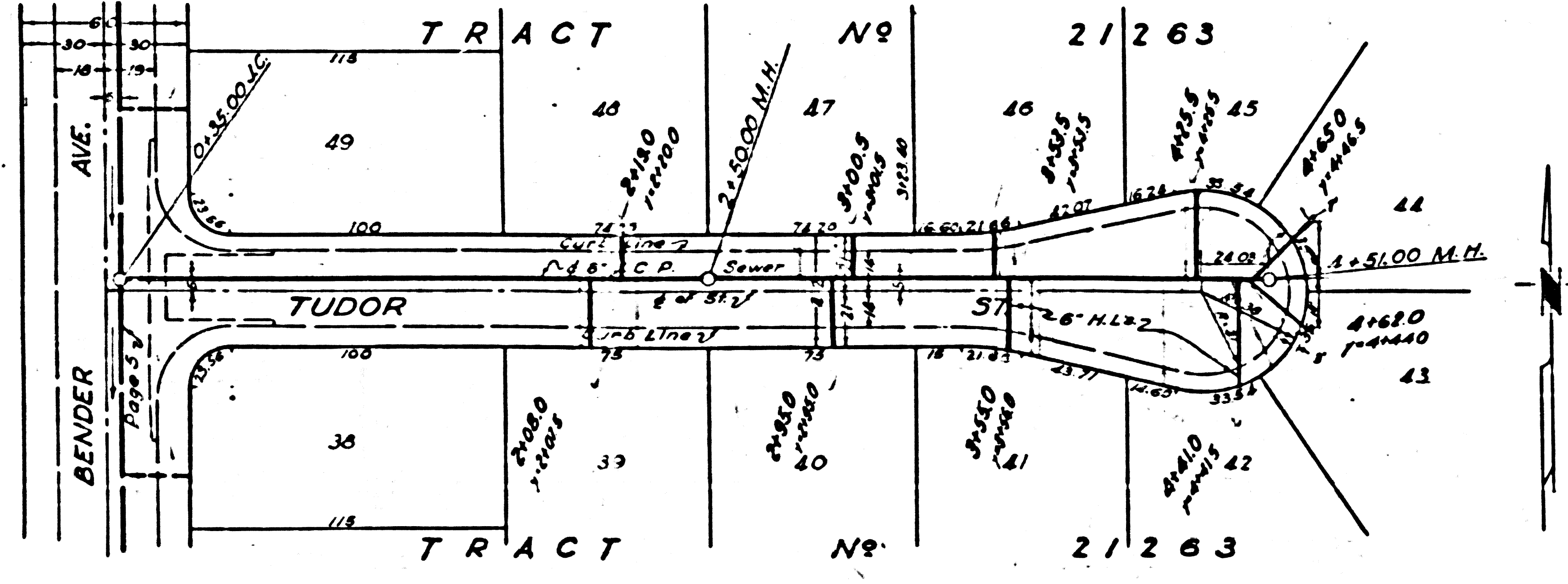
Trim Line

Trim Line

CI



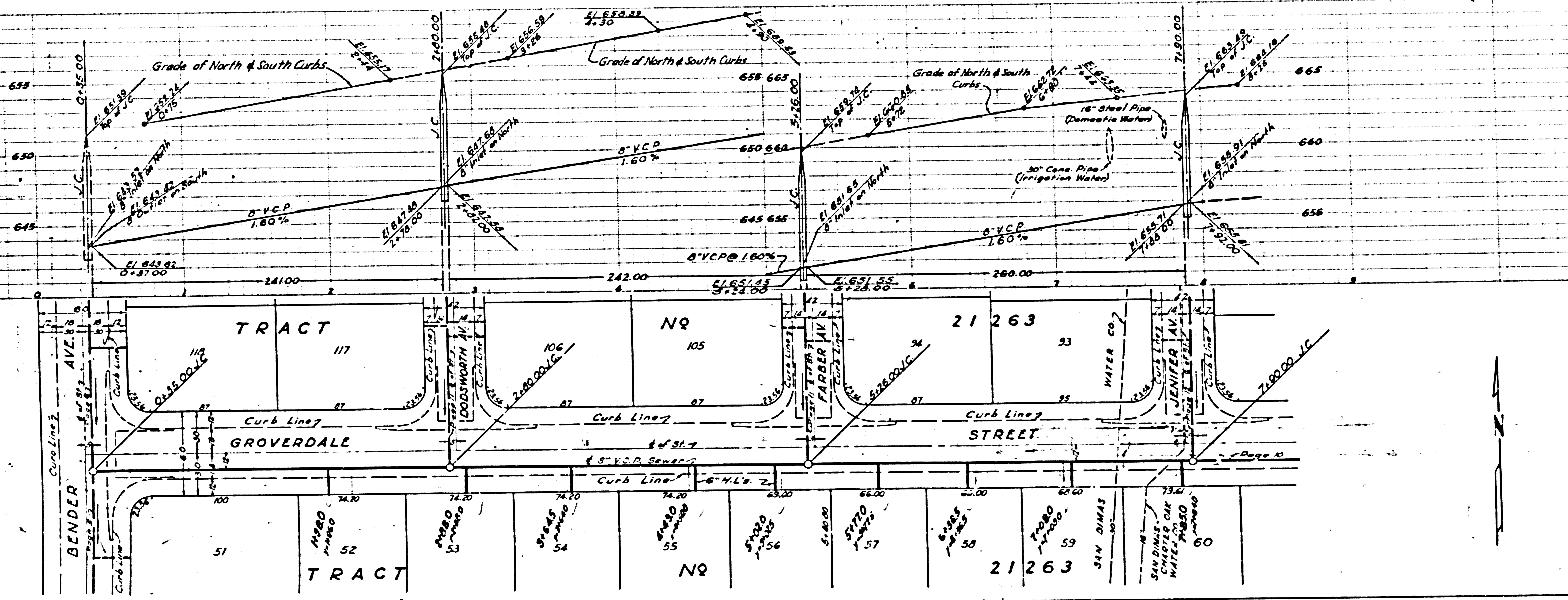
P.C. 3569
PAGE B
NO CHARGE
FOR
CONNECTIONS
22,134



These Connections and their
Grades are Assumed to be
Those of
Cause by S. K. Smith, P.E.
Date of Issue
and 12/27/2000

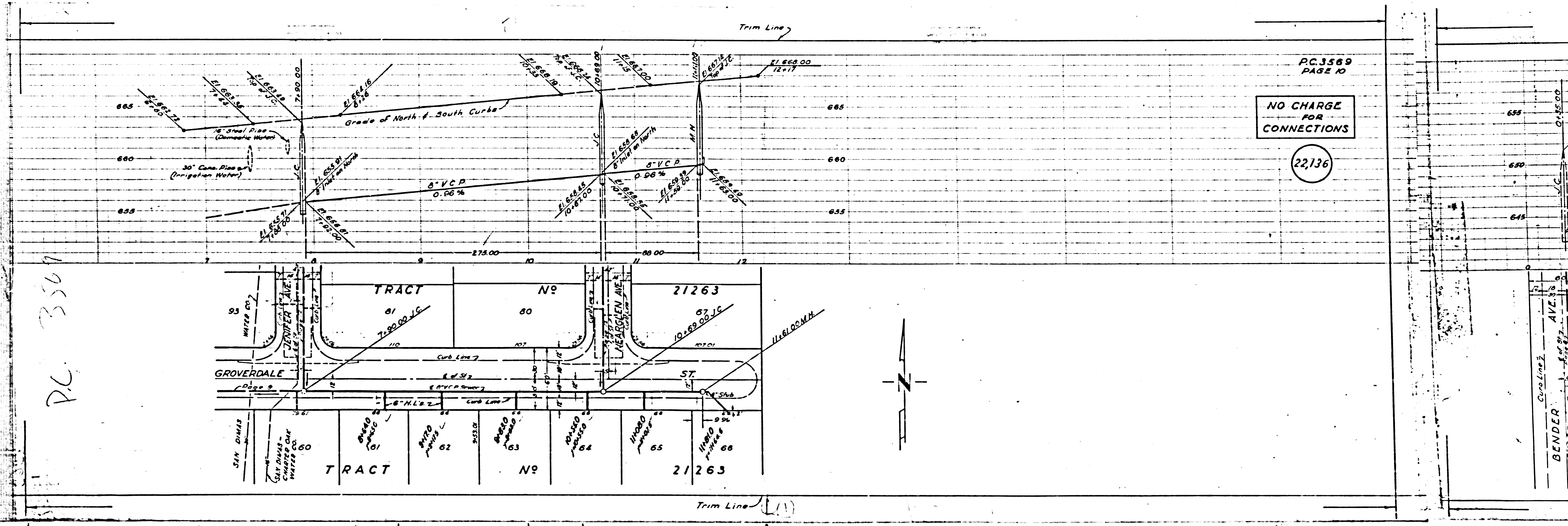
NO CHARGE
FOR
CONNECTIONS

22,135

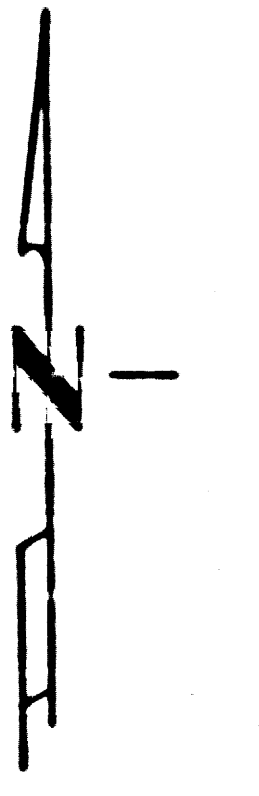


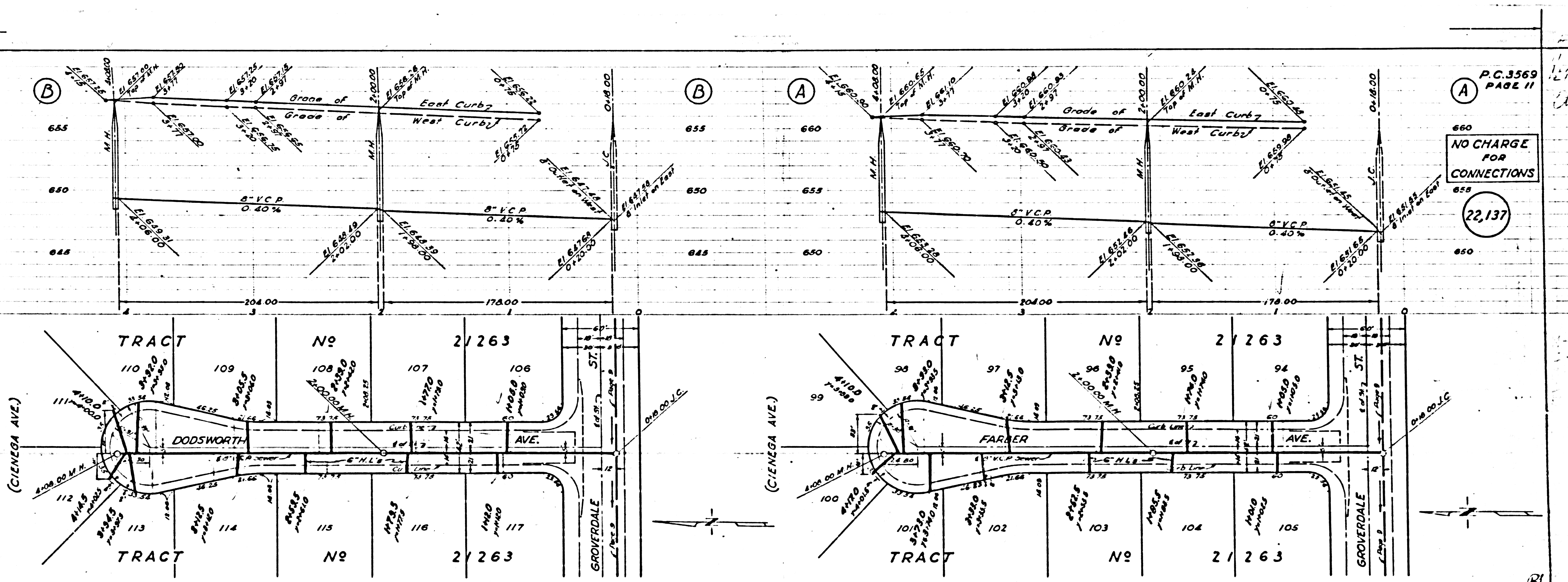
NO CHARGE
FOR
CONNECTIONS

22136



P.C. 3567





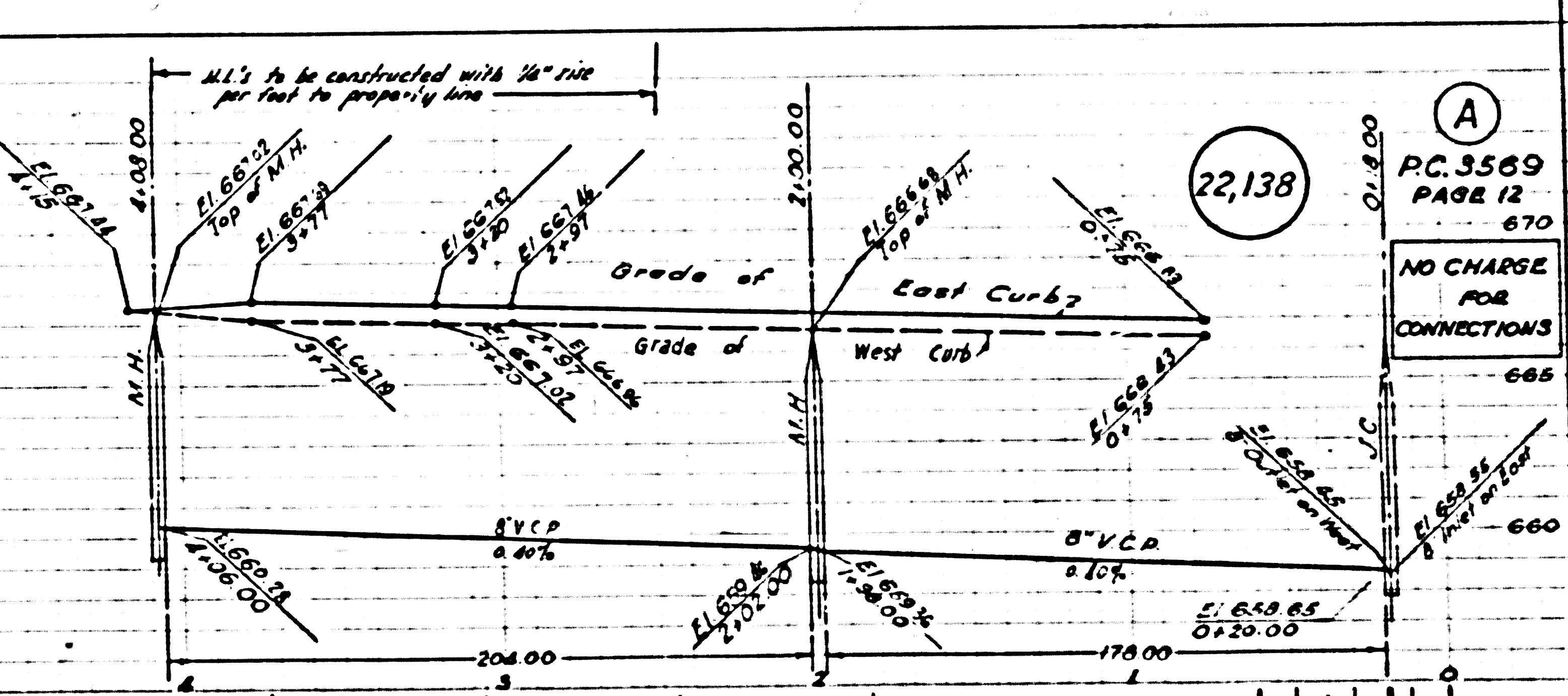
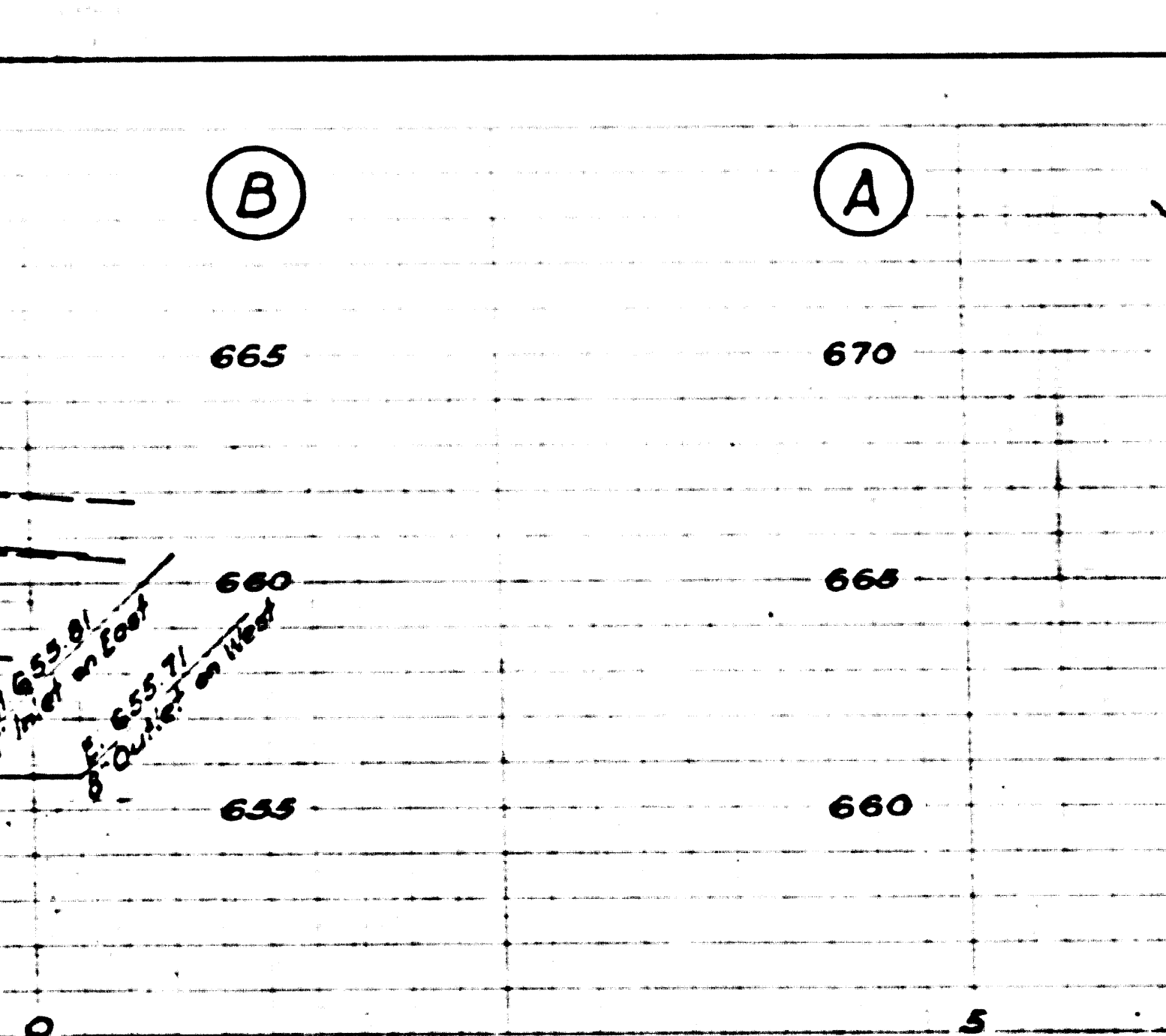
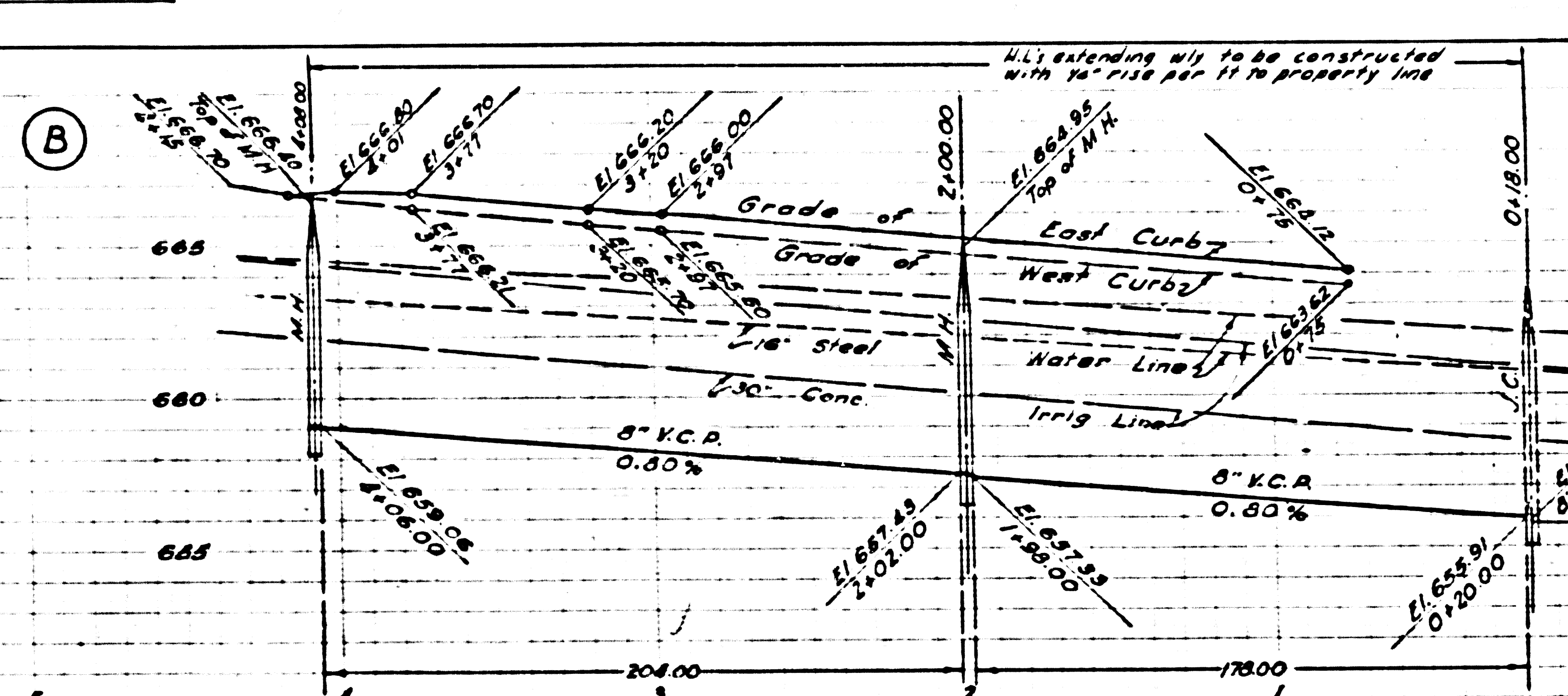
P.C. 3569
PAGE 11

NO CHARGE
FOR
CONNECTIONS

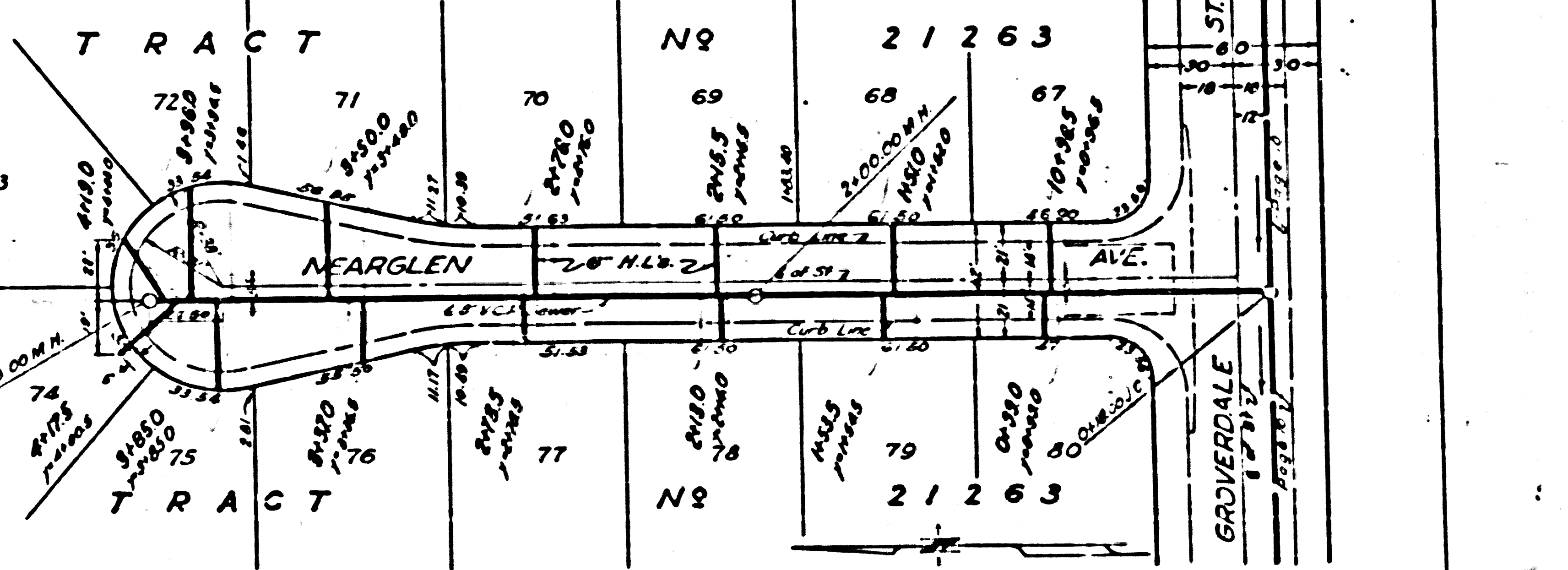
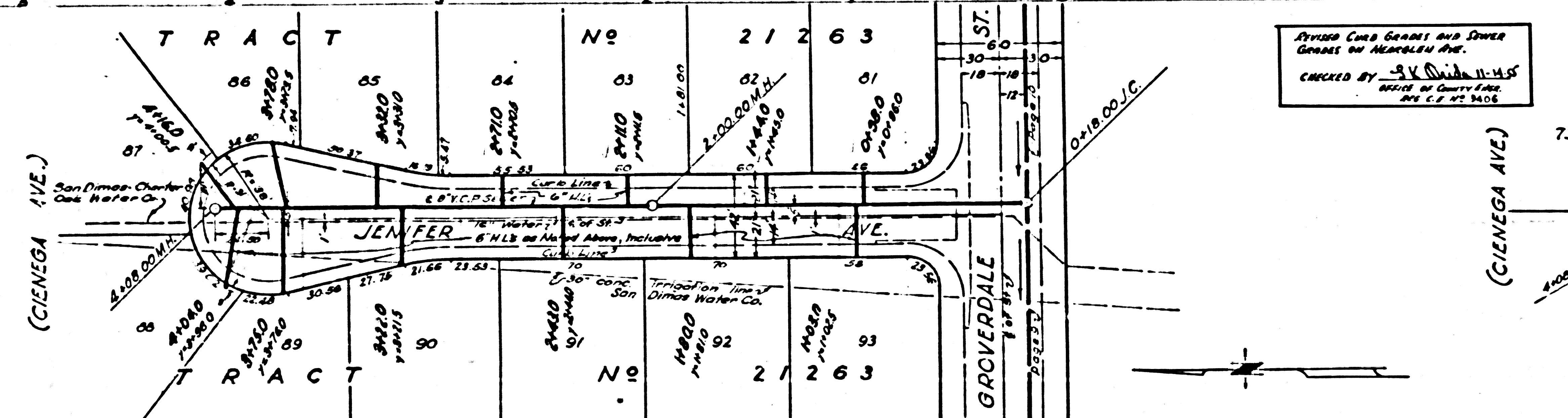
22,137

3

21



PC. 3569
PAGE 12
670
NO CHARGE
FOR
CONNECTIONS



STREET CURB GRADES AND OTHER
DATA ON NEARGLEN AVE.
CHECKED BY *[Signature]*
DATE OF CHECKING
200 12 12 1908

CU