

**BELLFLOWER BLDG. DIST. NO. 4**

- NOTE:  
NO REPRESENTATIVE OF THE COUNTY ENGINEER WILL SURVEY OR LAY OUT ANY PORTION OF THE WORK.  
THE OWNER OR HIS AUTHORIZED REPRESENTATIVE SHALL FURNISH THE COUNTY ENGINEER WITH GRADE SHEETS AND STATIONS FOR ALL HOUSE LATERALS AND Y BRANCHES AND SHALL PROVIDE STAKES FOR THEM AT THEIR PROPER LOCATIONS WITH STATIONING PLAINLY MARKED. ANY CHANGE OF LOCATION SHALL BE REQUESTED IN WRITING BY THE OWNER OR HIS REPRESENTATIVE.  
NO REVISIONS SHALL BE MADE IN THESE PLANS WITHOUT APPROVAL OF THE COUNTY ENGINEER.
1. USE STANDARD MANHOLE FRAMES AND COVERS, S-8-117, EXCEPT AS NOTED.
  2. USE STANDARD STRENGTH PIPE EXCEPT AS NOTED.
  3. ~~USE STANDARD STRENGTH PIPE EXCEPT AS NOTED.~~
  4. RESURFACE ALL TRENCH WITHIN PAVED AREA TO MEET L.A. COUNTY ROAD DEPT. REQUIREMENTS IN ACCORDANCE WITH PERMIT.
  5. ENCASE FOUR FEET OF SEWER AT POINTS OF INTERFERENCE WITH POLES, S-8-118.
  6. HOUSE LATERALS TO BE CONSTRUCTED WITH INVERT AT PROPERTY LINE 4 FEET BELOW CURB GRADE, EXCEPT AS NOTED.
  7. ALL STRUCTURES SHALL BE BRICK SEWER STRUCTURES, S-8-104, EXCEPT AS NOTED.
  8. PROVIDE STAKES ON THE PROPERTY LINES OR PROPERTY LINES PRODUCED, AT RIGHT ANGLES TO THE SEWER LINE AT THE CENTER LINE OF EACH MANHOLE.
  9. FOR ALLOWABLE LEAKAGE TEST USE FORMULA NO. 2 SPECS. SEC. 51.
  10. USE JOINT COMPRESSOR FOR ALL VITRIFIED CLAY PIPE JOINTS PER SPECS. SEC. 51, EXCEPT AS NOTED IN PROFILES.
- before breaking into any existing structure  
and before final acceptance of this work,  
County Sanitation Division should be notified  
afterward the required inspection may be made.

PROFILE, ALIGNMENT AND GRADE OF  
**SANITARY SEWERS**  
TO BE CONSTRUCTED IN  
**TRACT NO. 20411**  
PRIVATE CONTRACT NO. 5571  
W. S. 31  
SHEET 1 OF 2 SHEETS  
JUNE 1955  
PREPARED IN THE OFFICES OF  
**ENGINEERING SERVICE CORPORATION**  
BY *P. J. Fox*  
REG. C. E. NO. 3692  
FOR LEGEND  
SEE PLAN NO. S-8-84

NOTE:  
GRADES TO WHICH THIS IMPROVEMENT IS TO BE CONSTRUCTED ARE SHOWN ON PLANS AND PROFILES. GRADE POINTS FOR TOP OF CURB, CENTER LINE OF STREETS, OR CENTER LINE OF ALLEY ARE SHOWN BY CIRCLES ON PROFILES. AT ALL POINTS BETWEEN DESIGNATED POINTS THE GRADE SHALL BE ESTABLISHED SO AS TO CONFORM TO A STRAIGHT LINE DRAWN BETWEEN SAID DESIGNATED POINTS.  
ELEVATIONS ARE IN FEET ABOVE U. S. G. S. DATUM OR MEAN SEA LEVEL.  
THIS DRAWING AND THE DATA HEREON ARE HEREBY MADE A PART OF THE SPECIFICATIONS.  
WORK SHALL BE CONSTRUCTED ACCORDING TO SPECIFICATIONS ON FILE IN THE OFFICE OF THE COUNTY ENGINEER AND SHALL BE PROSECUTED ONLY IN THE PRESENCE OF THE COUNTY ENGINEER.  
BEFORE WORK CAN BE STARTED THE CONTRACTOR MUST OBTAIN A PERMIT TO EXCAVATE IN COUNTY STREETS FROM THE L.A. COUNTY ROAD DEPT. 108 W. 2ND ST. AND MAKE A DEPOSIT WITH THE COUNTY ENGINEER, 831 524 253 S. BROADWAY, SUFFICIENT TO COVER THE COST OF CONSTRUCTION INSPECTION AND RECORD PLANS.  
APPROVAL OF THIS PLAN BY THE COUNTY OF LOS ANGELES DOES NOT CONSTITUTE A REPRESENTATION AS TO THE ACCURACY OF THE LOCATION OF, OR THE EXISTENCE OR NON-EXISTENCE OF, ANY UNDERGROUND UTILITY PIPE, OR STRUCTURE WITHIN THE LIMITS OF THIS PROJECT.  
COUNTY OF LOS ANGELES, CALIFORNIA.  
APPROVED *W. J. Fox* CHIEF ENGINEER OF COUNTY SANITATION DISTRICT NO. 19  
BY *P. J. Fox* BY OFFICE ENGINEER  
CHECKED BY OFFICE OF COUNTY ENGINEER  
REG. C. E. NO. 7260

ENGINEERING SERVICE CORPORATION  
1127 W. WASHINGTON BLVD.  
LOS ANGELES 15, CALIF. R-9-7281

REVISIONS		TRACED BY
		J. W. F.
		DESIG. BY
		CKD BY
		SUBMITTED
SUB STRUCTURES OK'D		
W. S. NO.	DATE	SCALE
1220-43	JUNE 1955	AS NOTED

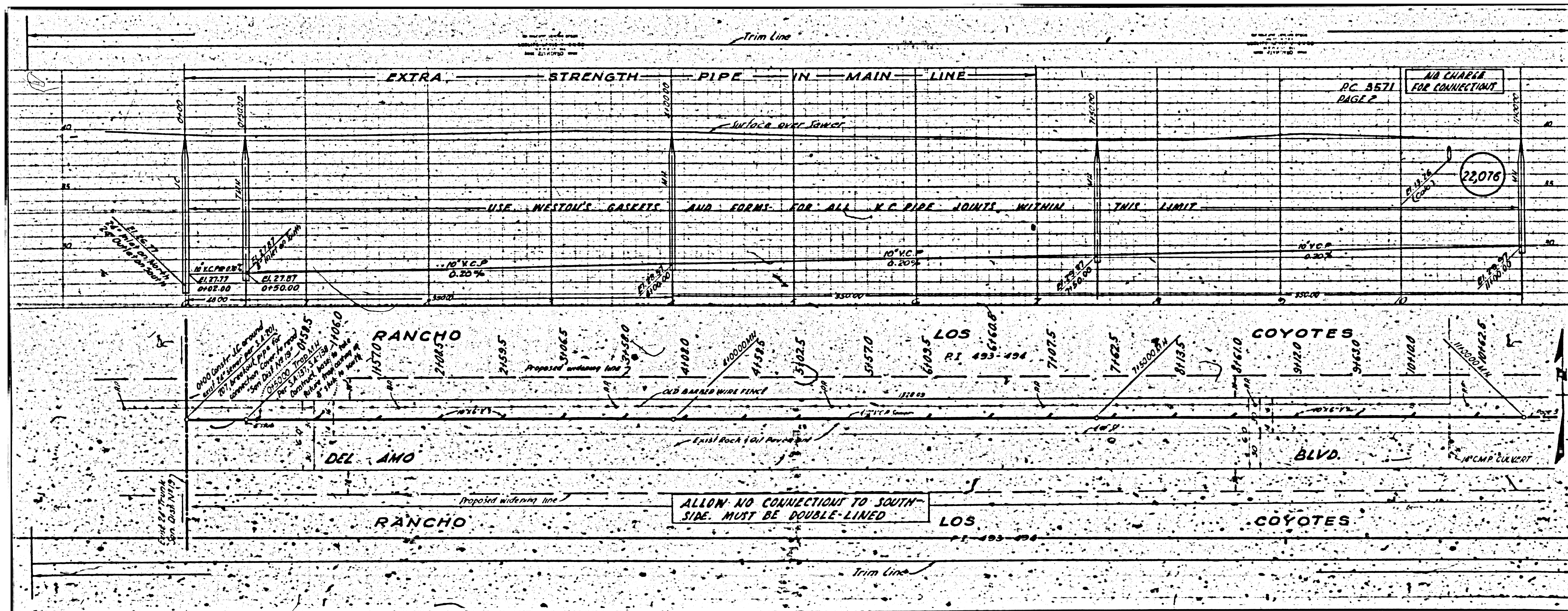
SHEET	DATE
1	1-5
2	6-10

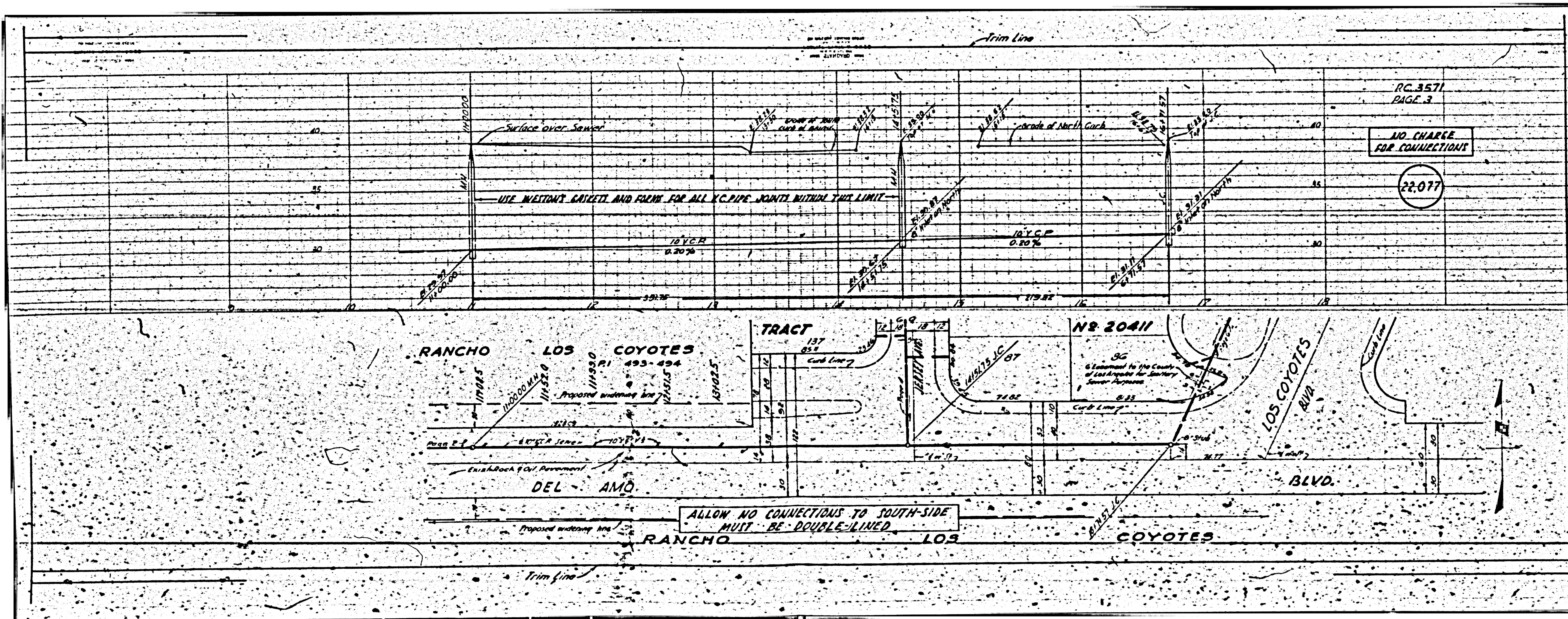
NO CHARGE FOR CONNECTIONS  
S.K. Bunch et al

22,075

(10)

AC 3571



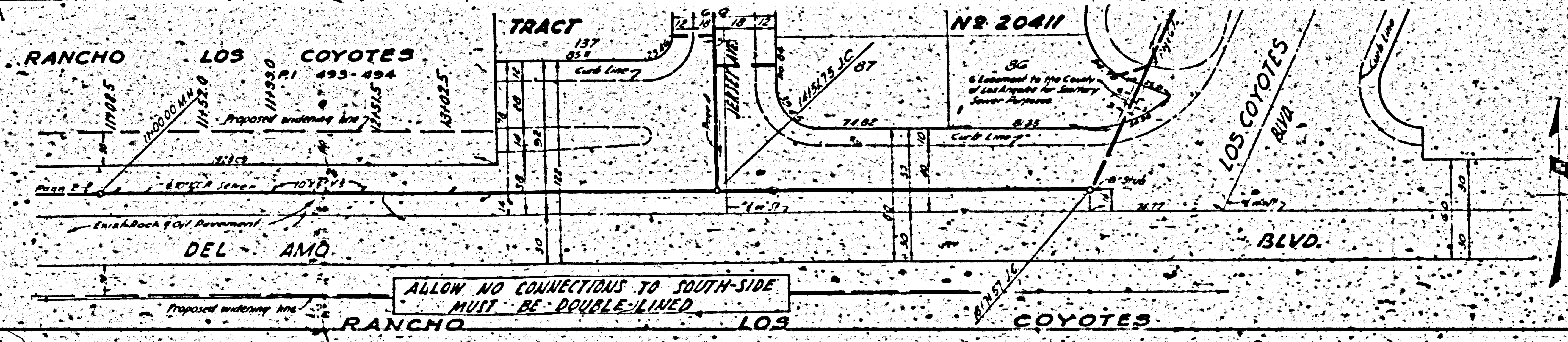


Trim line

RC 3571  
PAGE 3

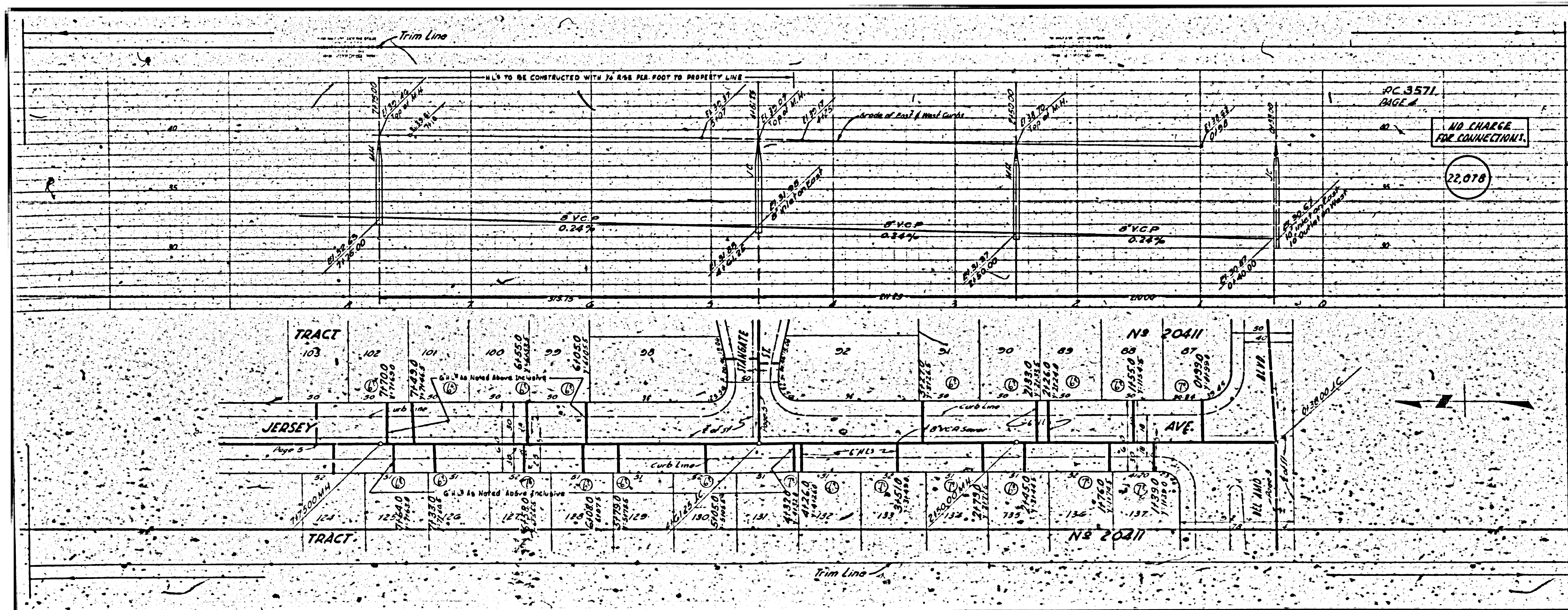
NO CHARGE  
FOR CONNECTIONS

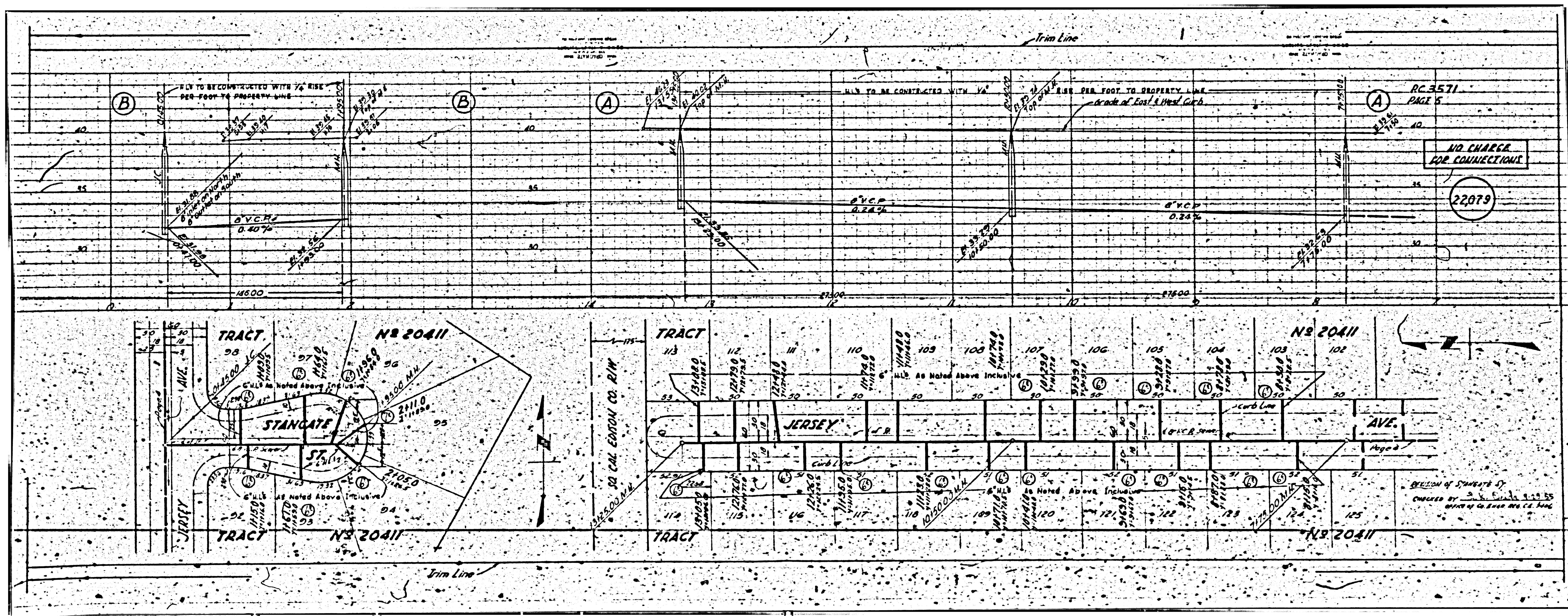
22.077

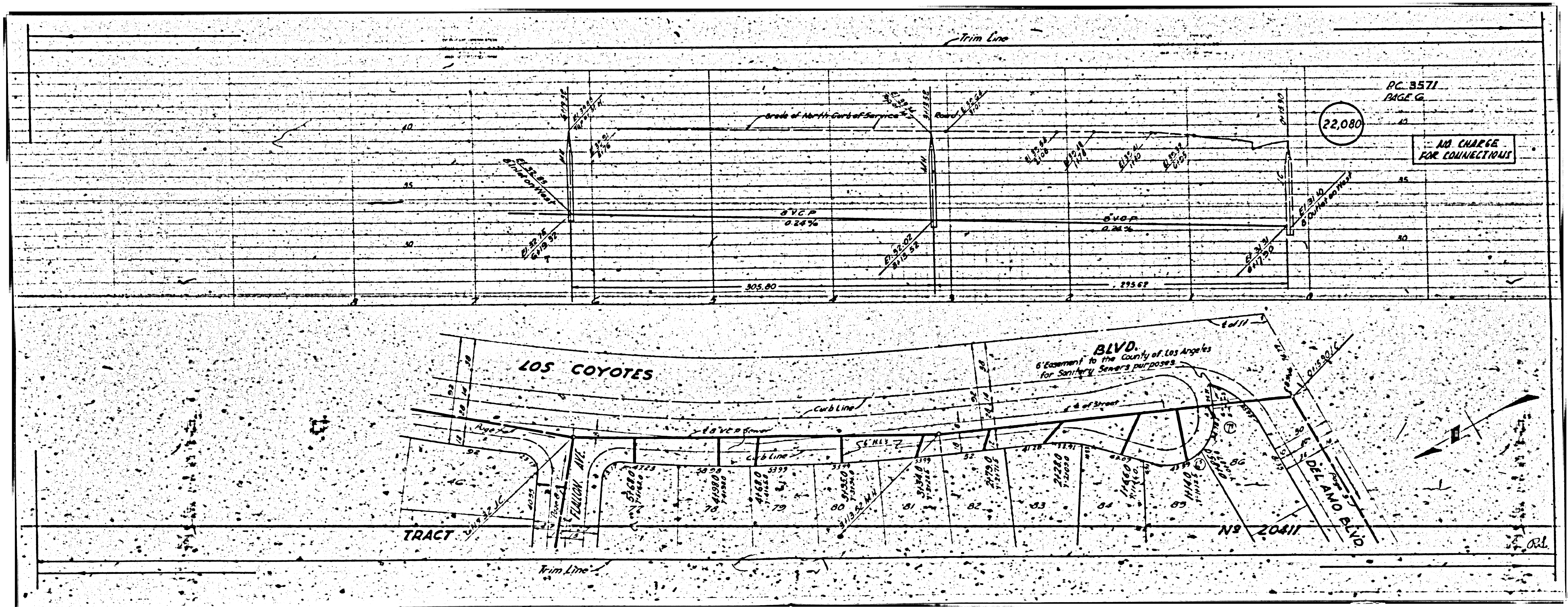


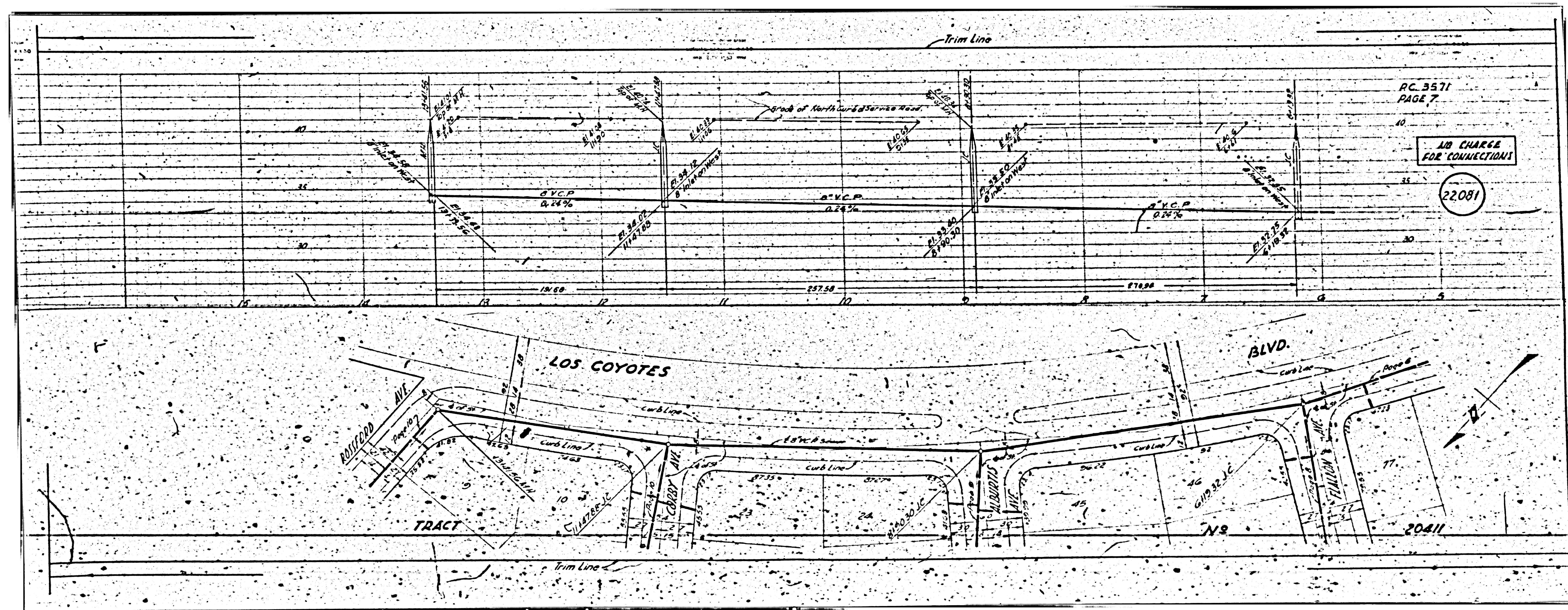
ALLOW NO CONNECTIONS TO SOUTH-SIDE  
MUST BE DOUBLE-LINED

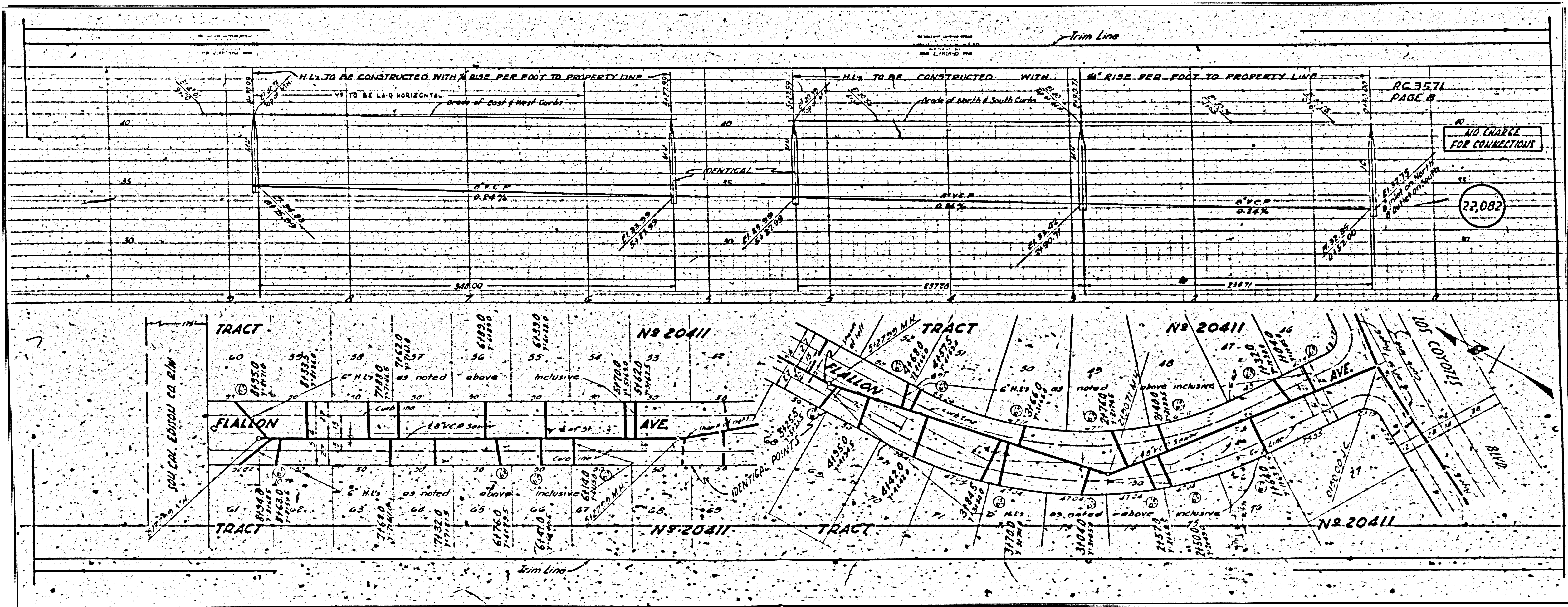
Trim line



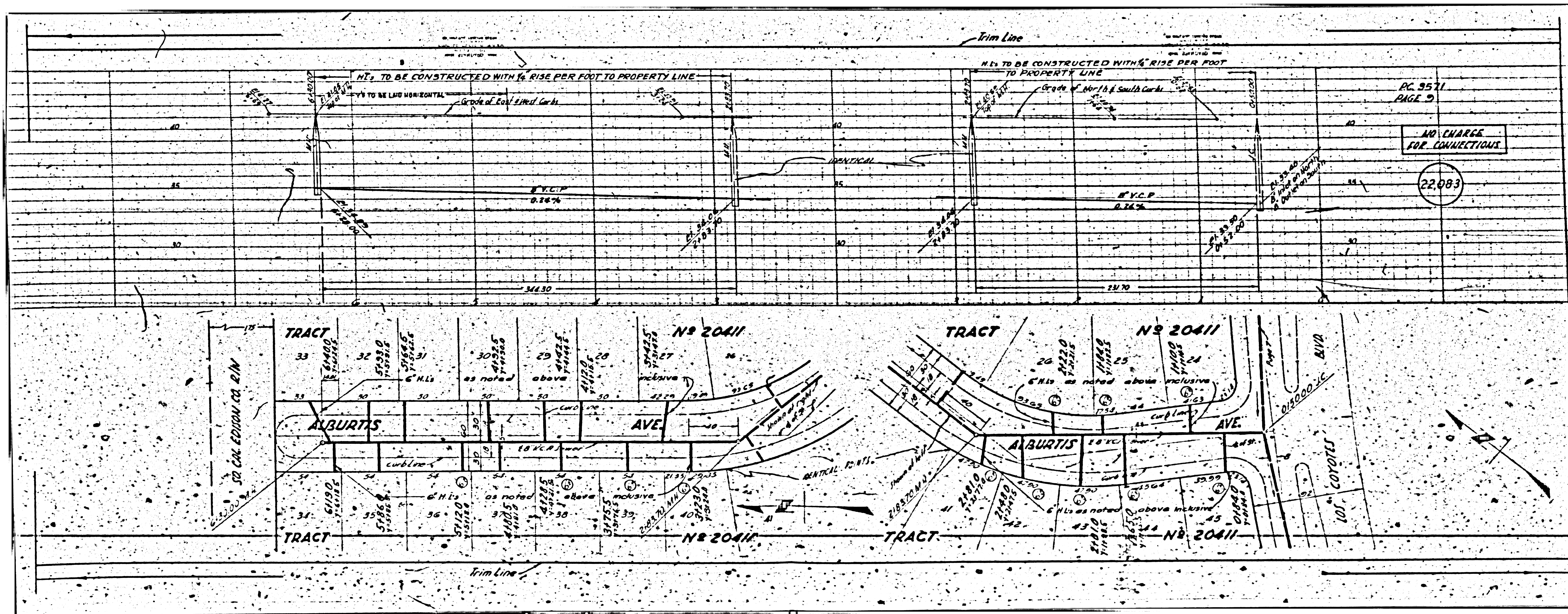












PG. 9571  
PAGE 9

NO CHARGE  
FOR CONNECTIONS

22,083

