

P.C. 3544
PAGE 2

NO CHARGE
FOR CONNECTIONS

21,468

B.M. 50 1085 Elev. 916.130
Lead & Brass Nail in S.E. Corner of
Cone Base of Pump House 45'2" E. of E.
of Torch St. & 65'4" N. of E. of Peach Ave.

NOTE: LOTS 1-11 INCLUDING SEWER
BY ALLY CONSTRUCTED
UNDER P.C. 3243.

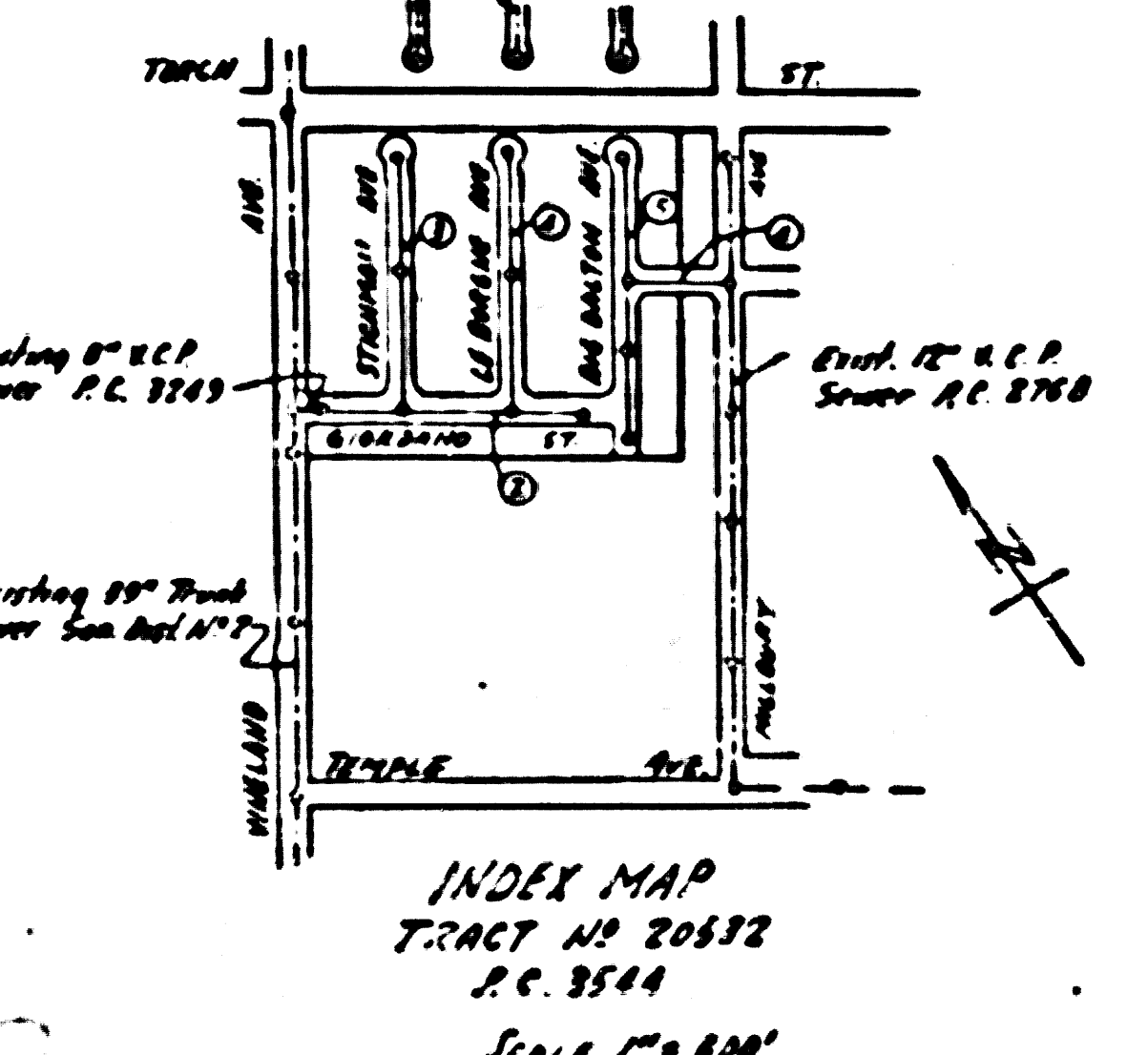
SHEET	PAGE
1	1-5

NO CHARGE
FOR CONNECTIONS
Reference 6-12-55

Sealed 9-29-55

PUENTE BLDG. DIST. NO 2

- NOTE:**
Provide stakes on the property lines or property lines produced at right angles to the sewer line at the center line of each manhole.
- No revisions shall be made in these plans without the approval of the County Engineer.
1. Use standard manhole frames and covers, S-a-117.
 2. Use standard strength pipe except as noted.
 3. Use cement mortar for all vitrified clay pipe joints.
 4. Resurface all trench within paved area to meet L.A. County Road Dept. or California State Highway Dept. requirements in accordance with permit.
 5. Encase four feet of sewer at points of interference with poles, S-a-119.
 6. House laterals to be constructed at property line, 6 feet below curb grade except as noted.
 7. All structures shall be brick sewer structures, S-a-104.
 8. For allowable leakage test, use Formula No. 1, Spec's., Sec. 51.
 9. Manhole tops in unimproved Rights-Of-Way to be 6" above finish grade.



INDEX MAP
TRACT NO 20532
P.C. 3544
Scale 1" = 80'

PROFILE, ALIGNMENT AND GRADE OF
SANITARY SEWERS
TO BE CONSTRUCTED IN

TRACT NO 20532

PRIVATE CONTRACT NO. 3544
W. S. 46
ONE SHEET
Scale: VERT. 1" = 4'
HORIZ. 1" = 40' MAY 1955
PREPARED IN THE OFFICES OF

Handwritten Signature
Reg. C.E. No. 2151

FOR LEGEND SEE PLAN NO. S-a-64

NOTE:
Grades to which this improvement is to be constructed are shown on plans and profiles. Grade points for top of curbs, center line of streets, or center line of alleys are shown by circles on profiles. At all points between designated points the grade shall be established so as to conform to a straight line drawn between said designated points.
Elevations are in feet above U.S.G.S. datum or mean sea level.
This drawing and the data hereon are hereby made a part of the specifications.
Work shall be constructed according to specifications on file in the office of the County Engineer and shall be prosecuted only in the presence of the County Engineer.
Before work can be started, the contractor must obtain a permit to excavate in County streets from the L.A. County Road Dept., 108 W. 2nd St. and make a deposit with the County Engineer, 318, 2nd St., Satisfactory sufficient to cover the cost of construction inspection and record plans.
Approval of this plan by the County of Los Angeles does not constitute a representation as to the accuracy of the location of or the existence or non-existence of any underground utility, pipe, or structure within the limits of this project. This note applies to all sheets.
If work is to be done on a State Highway, a permit must be obtained from the State of California, Division of Highways, 120 South Spring Street.

COUNTY OF LOS ANGELES, CALIFORNIA
Approved, William J. Fox, County Engineer Approved, A. M. Rawn
CHIEF ENGINEER SAN. DIST. NO. 15
Handwritten Signature
Checked by *Handwritten Signature* 6-15-55
Office of County Engineer, Reg. C. E. No. 2151

P.C. 3544
PAGE 1

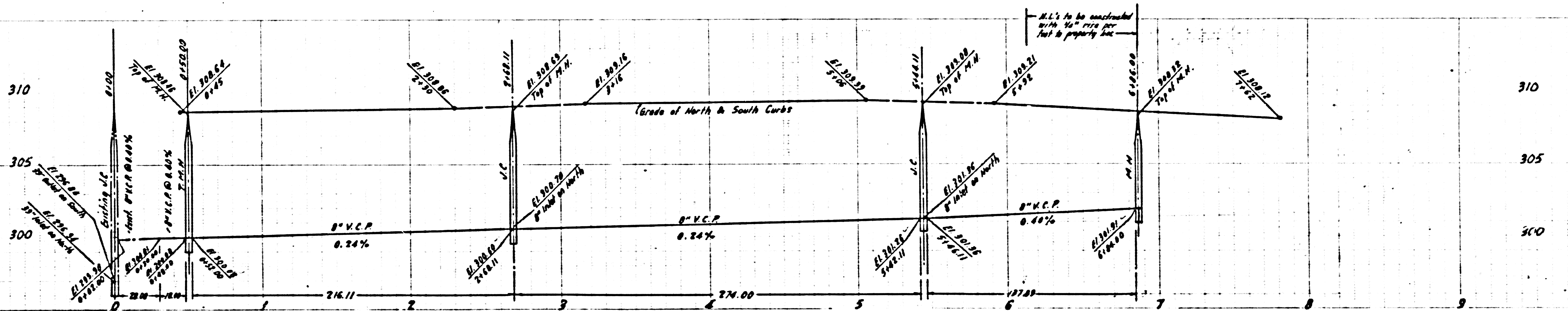
21,467

824

R.C. 3544
PAGE 3

NO CHARGE
FOR CONNECTIONS

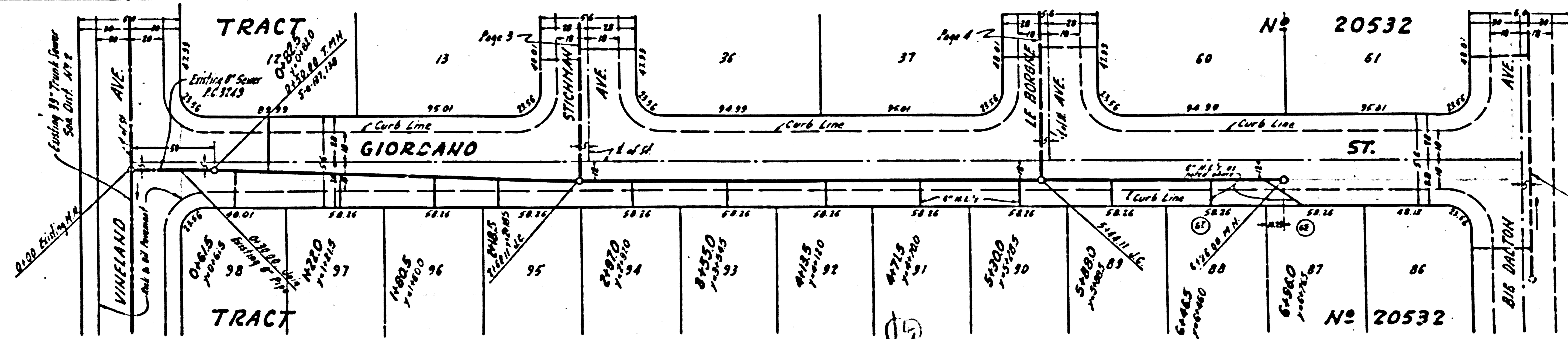
21,469

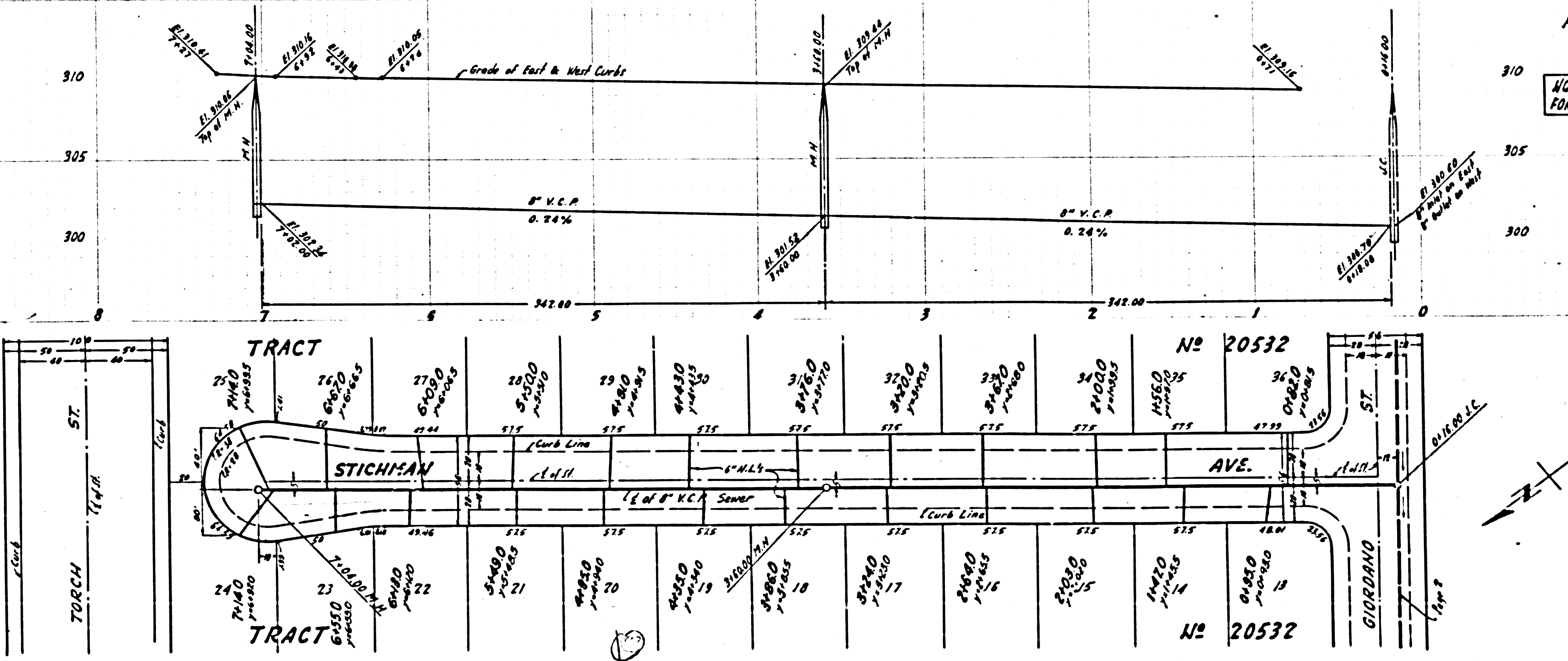


R.C. 2544
PAGE 2

NO CHARGE
FOR CONNECTIONS

21,468

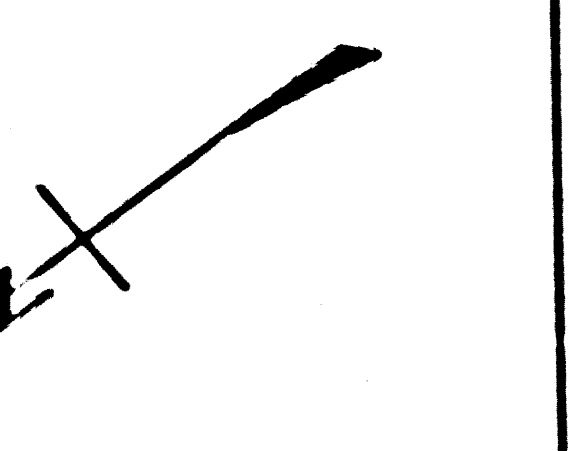


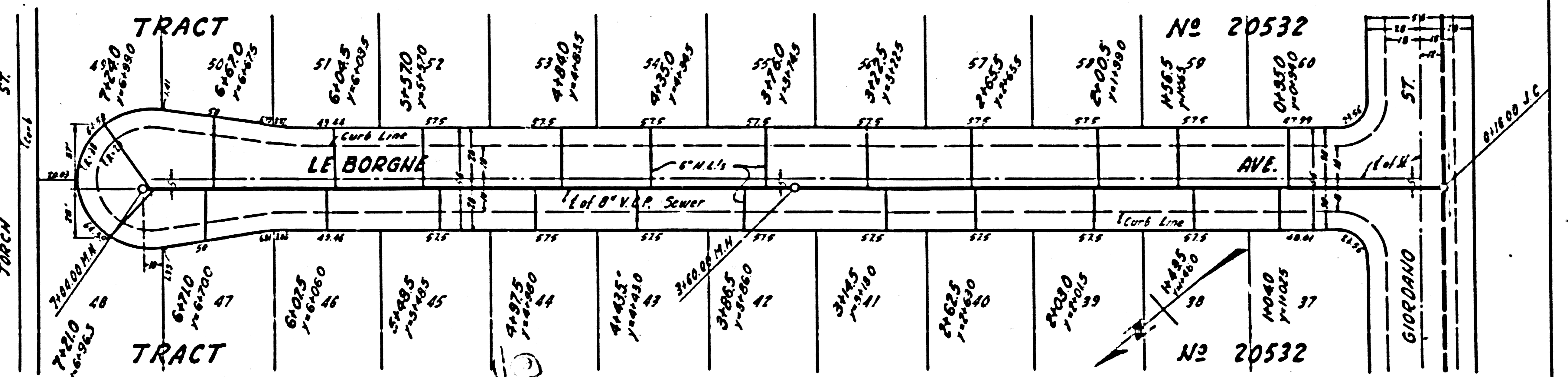
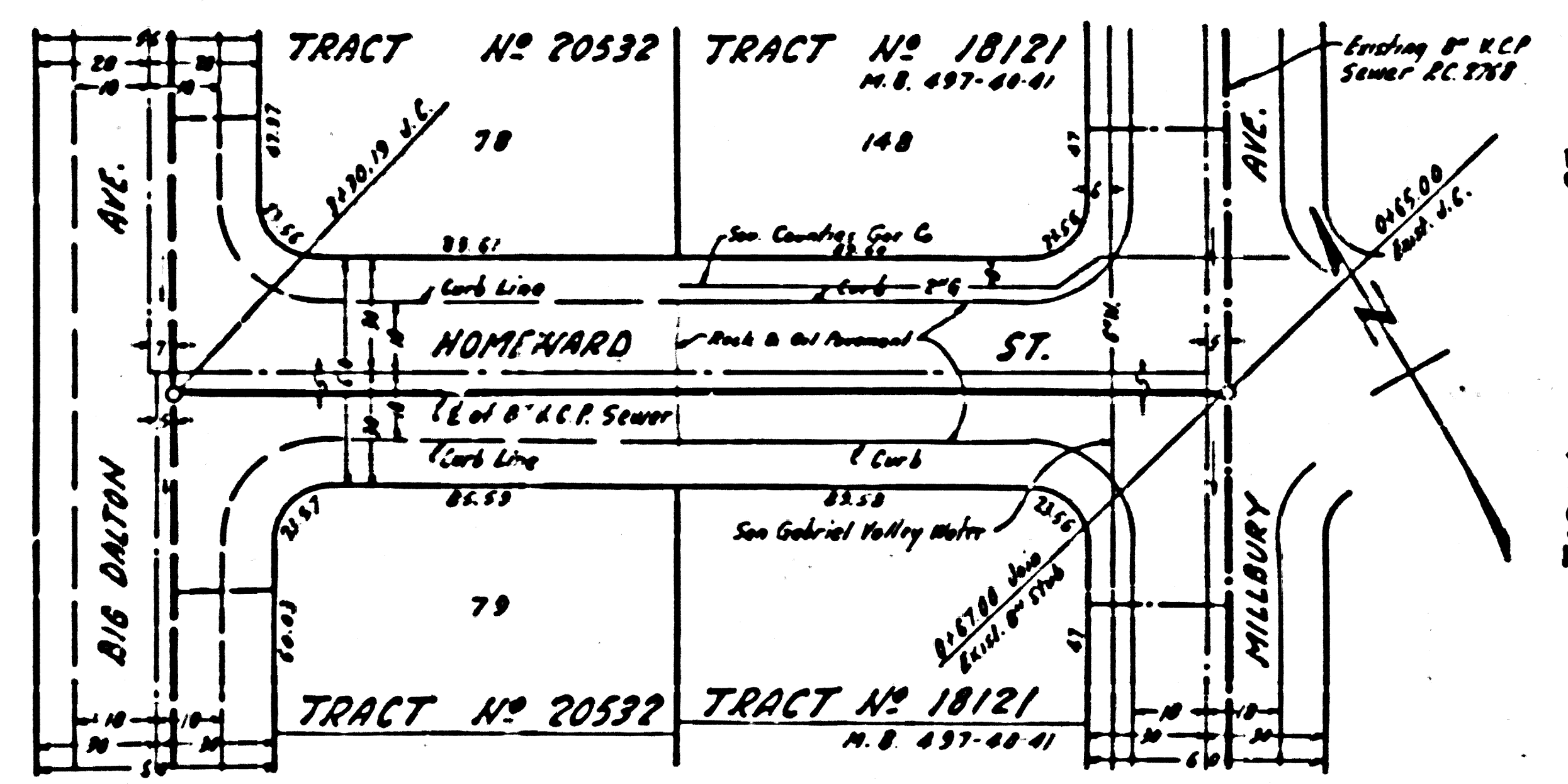
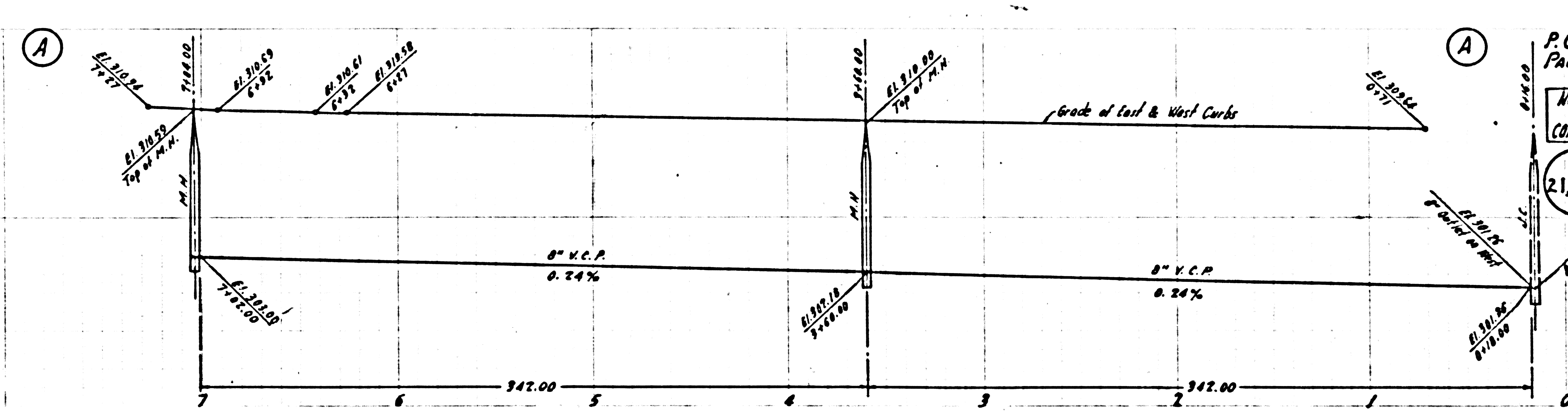
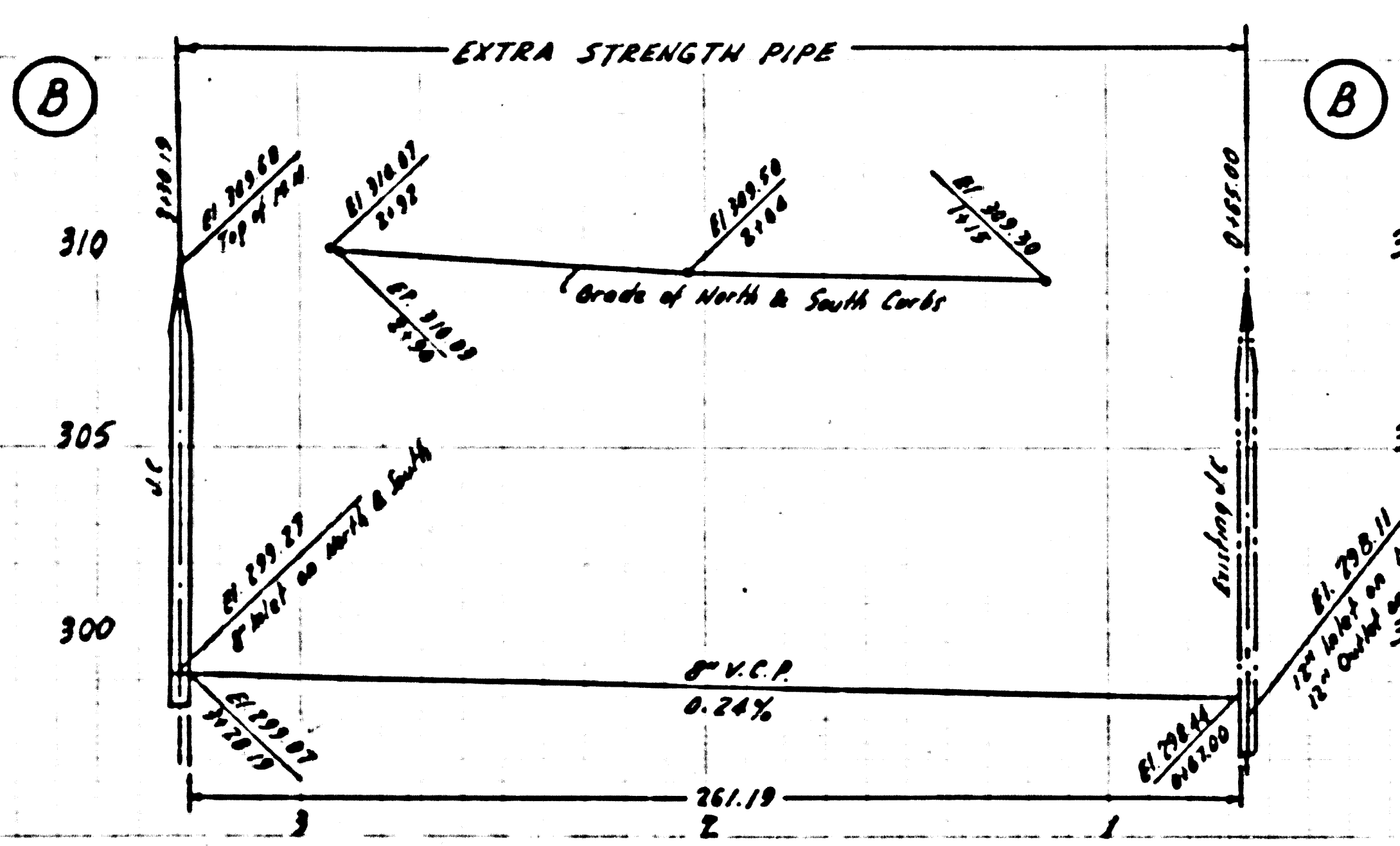


P.C. 3544
Page 9

NO CHARGE
FOR CORRECTIONS

21,469





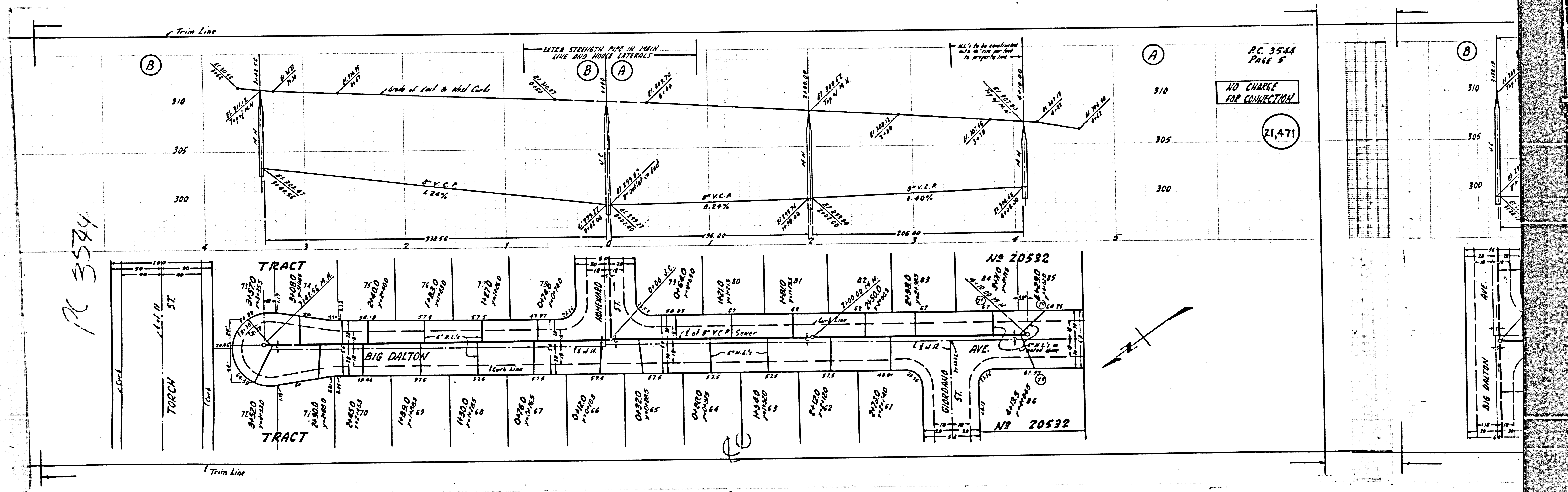
P.C. 3544
Page 4

NO CHARGE FOR CONNECTION

21470

EL. 310.00
TOP OF M.H.

PC 3584



PC 3584
PAGE 5

NO CHARGE
FOR CONNECTION

21,471

NO 20532

NO 20532

