

P.C. 3576
PAGE 2

SEE FOR
CONNECTIONS

22,239

B.M. 37 2764 Fd. L & T on Valley View Ave.
Intersection of Foster Rd. S.W. L & T of
2 L & T's 12 apart Elev. = 56000

NORWALK BUILDING DISTRICT NO. 4.2

- NOTE:**
- Provide stakes on the property lines or property lines produced at right angles to the corner line at the center line of each mark.
 - Any representative of the County Engineer will survey or layout any portion of the work.
 - The owner or his authorized representative shall furnish the County Engineer with grade sheets and stakes for all house laterals and Y branches and shall provide stakes for them at their proper locations with baselines plainly marked. Any change in location shall be requested in writing by the owner or his representative.
 - No revisions shall be made in these plans without the approval of the County Engineer.
 - Use standard manhole frames and covers, S-o-117.
 - Use standard strength pipe except as noted.
 - Use cement mortar for all vitrified clay pipe joints.
 - Resurface all trench within paved area to meet L.A. County Road Dept. or California State Highway Dept. requirements in accordance with permit.
 - Excise four feet of cover at points of interference with poles, S-o-119.
 - House laterals to be constructed with inverts at property line... G... feet below curb grade except as noted.
 - All structures shall be brick cover structures, S-o-104.
 - For airtight leakage test, see Formula No. 1, Sec. 51.
 - Manhole top to unimproved Right-Of-Way to be 6" above finish grade.

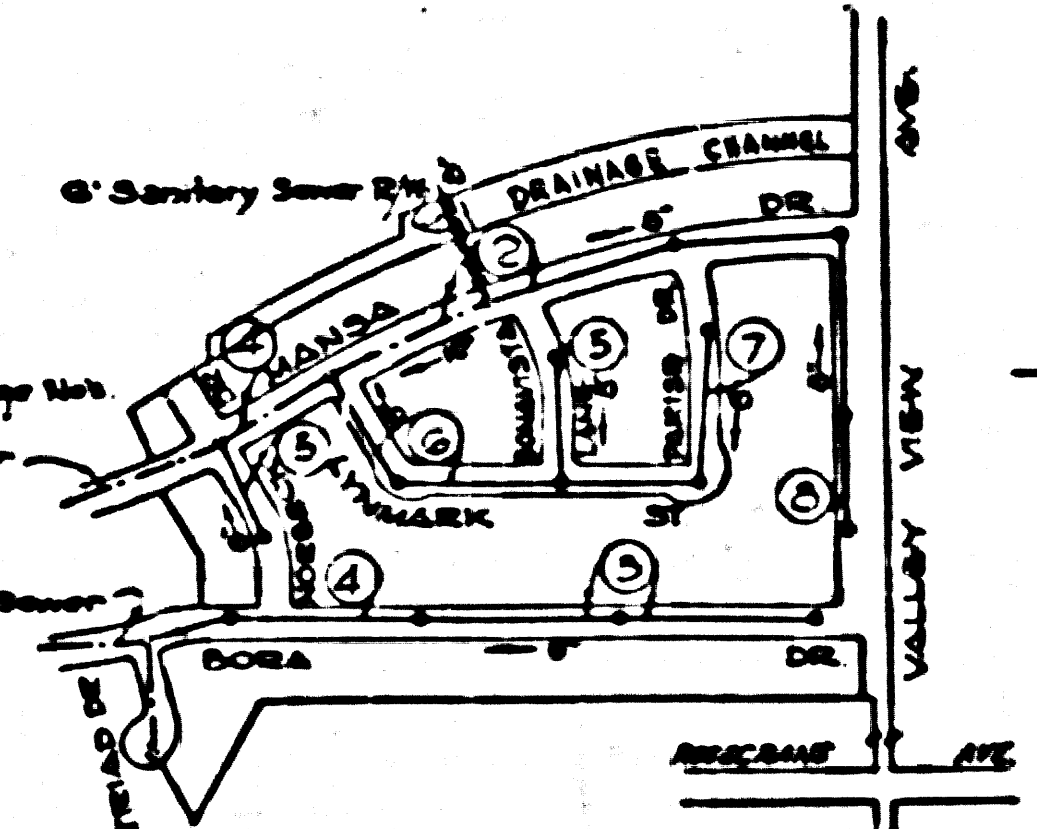
NOTE: Lots G5 to 7E served by P.C. 5577 in Third Drive.

Sheet	Pages
1	1-4
2	5-8

Note: Figures in circles indicate Pipe Nos.

Existing S.W.C.P. Sewer P.C. 5574

Existing S.W.C.P. Sewer P.C. 5577



INDEX MAP
TRACT NO. 22012 P.C. 3576
SCALE: 1"=40'

NO CHARGE FOR
CONNECTIONS
Robert J. ...

checked 2-24-56 *W. J. ...*

Trim line *(V)*

PROFILE, ALIGNMENT AND GRADE OF SANITARY SEWERS TO BE CONSTRUCTED IN

P.C. 3576
PAGE 1

TRACT NO. 22012

22,239

PRIVATE CONTRACT NO. 3576
W. S. 34
2 SHEETS

(8)

Scale: $\frac{1}{4}$ " = 1'-0" JULY 1955

PREPARED IN THE OFFICE OF
A. G. ROSENTHAL & ASSOCIATES

Arthur G. Rosenthal
No. 888-0903

FOR LEGEND SEE PLAN NO. S-o-64

NOTE:

Grades to which this improvement is to be constructed are shown on plans and profiles. Grade points for top of curb, center line of street, or center line of alley are shown by circles on profiles. At all points between designated points the grade shall be established so as to conform to a straight line drawn between said designated points.

Dimensions are in feet above U.S.C.S. datum or mean sea level.

This drawing and the data herein are hereby made a part of the specifications.

Work shall be constructed according to specifications on file in the office of the County Engineer and shall be prosecuted only in the presence of the County Engineer.

Before work can be started, the contractor must obtain a permit to excavate in County streets from the L.A. County Road Dept., 108 W. 2nd St. and make a deposit with the County Engineer, Box 524, 255 South Broadway, sufficient to cover the cost of construction inspection and record plans.

Approval of this plan by the County of Los Angeles does not constitute a representation as to the accuracy of the location of or the existence or non-existence of any underground utility, pipe, or structure within the limits of this project. This note applies to all sheets.

If work is to be done on a State Highway, a permit must be obtained from the State of California, Division of Highways, 1205 South Spring Street.

COUNTY OF LOS ANGELES, CALIFORNIA

Approved, William J. Fox, County Engineer
W. J. Fox

Approved, A. M. Rom
CHIEF ENGINEER
A. M. Rom

Checked by *J. V. ...*

Date of County Engineer, No. 888-0903

RS

TRACT NO. 22012

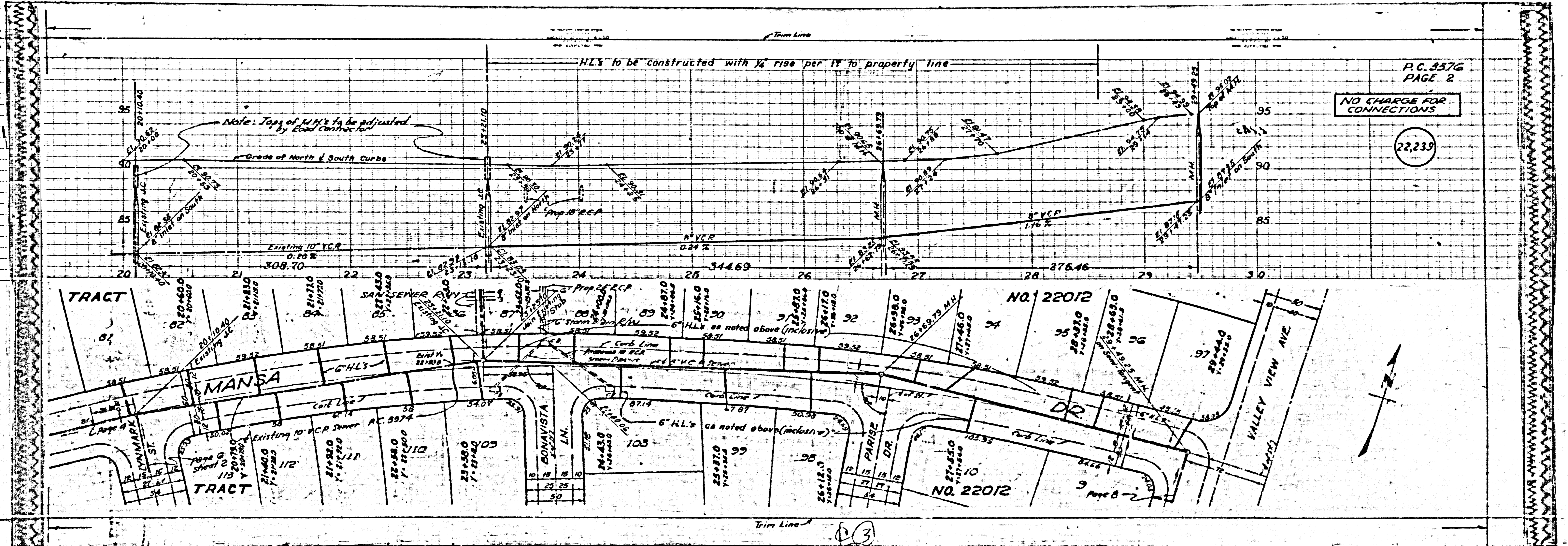
P.C. 3576

CHARGE FOR CONNECTIONS

NO CHARGE FOR CONNECTIONS

22240

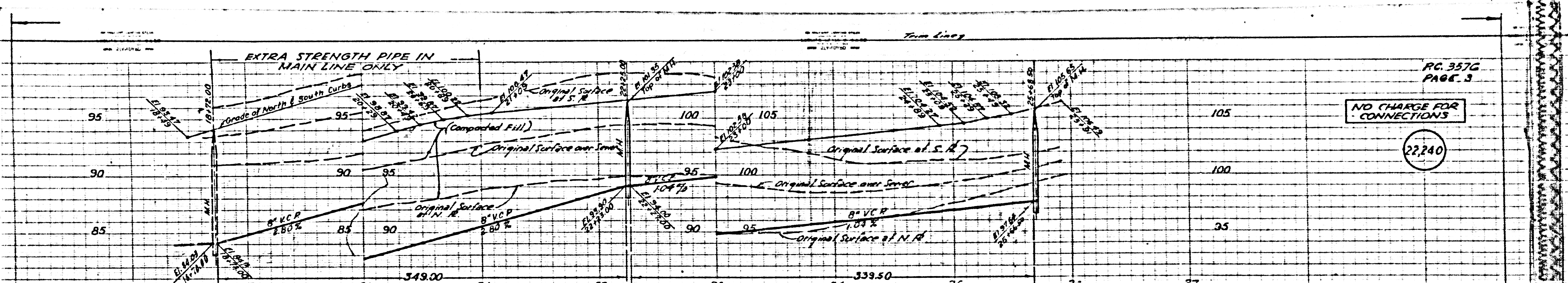
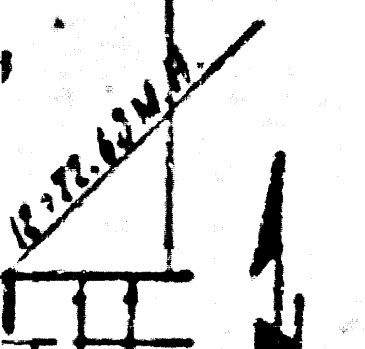
22239



CHARGE FOR
CONNECTIONS

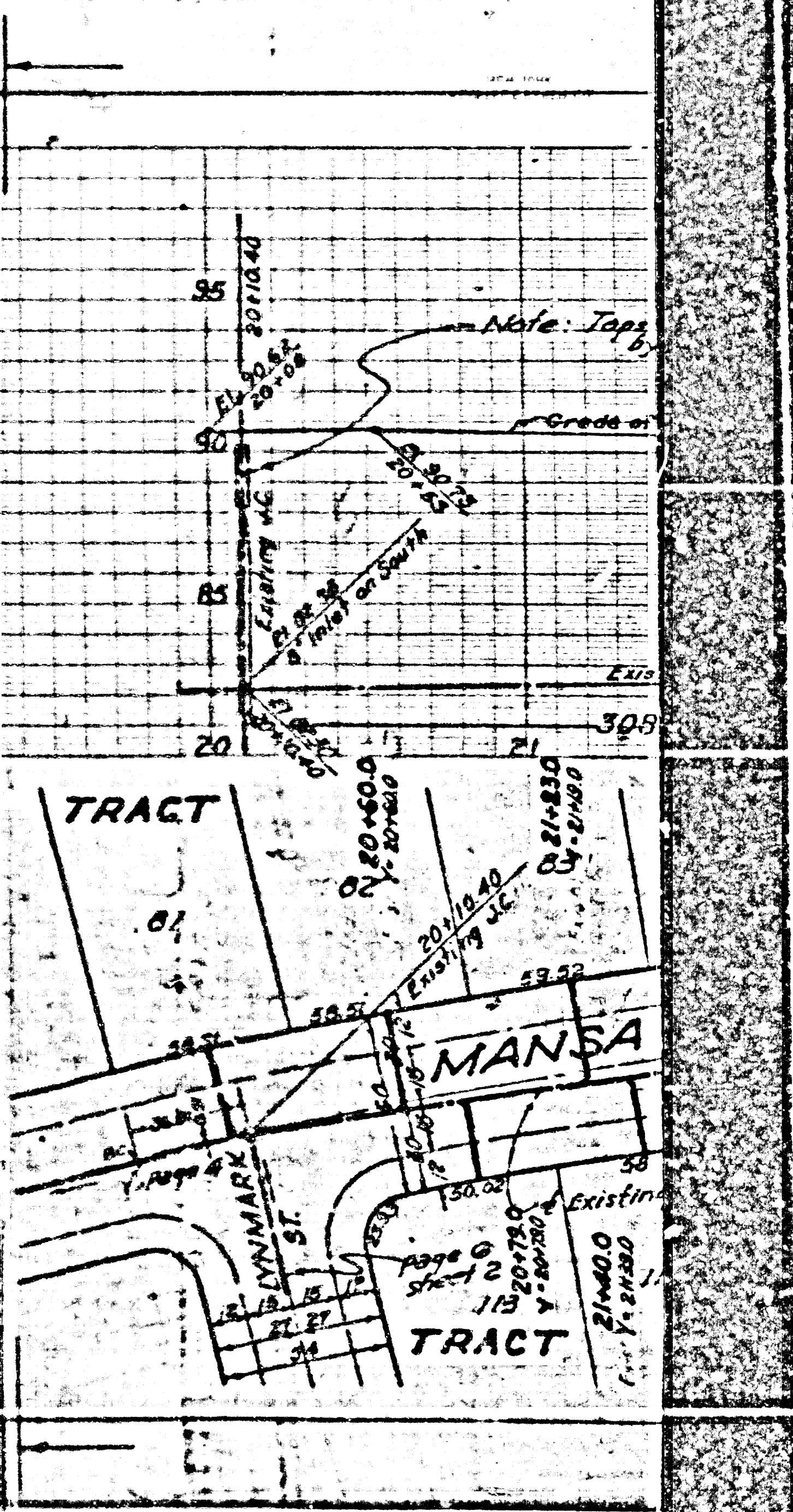
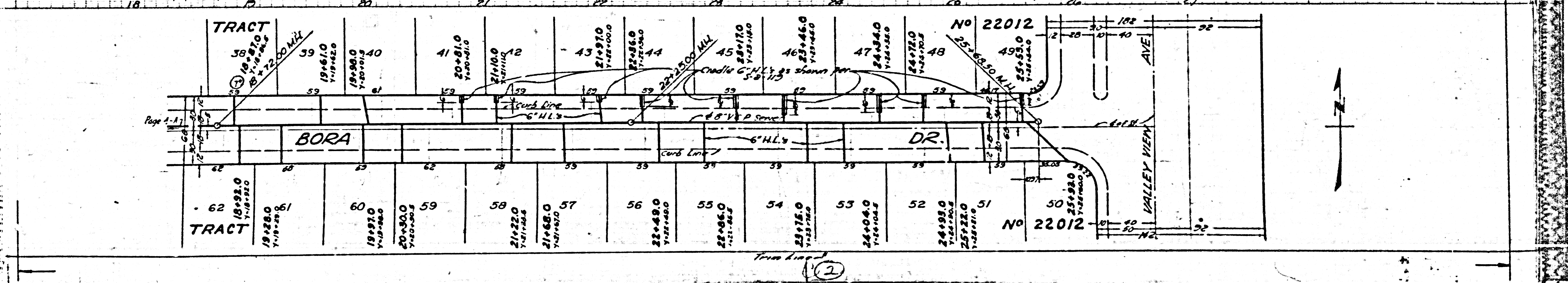
241

2

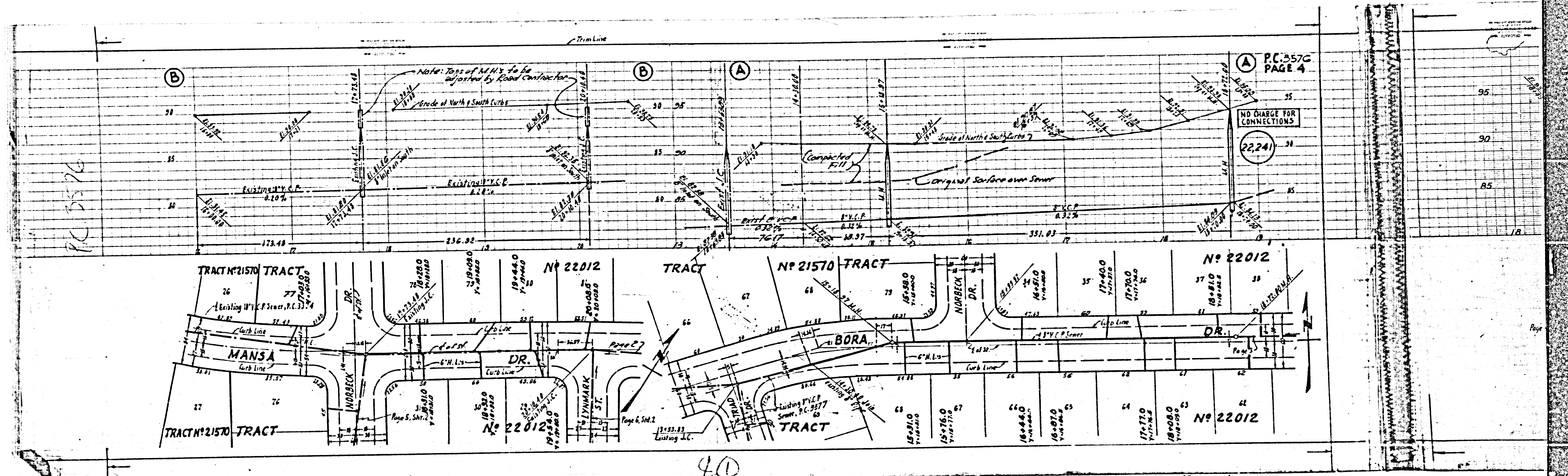


NO CHARGE FOR
CONNECTIONS

22,240



2



P.C. 3576
PAGE 4

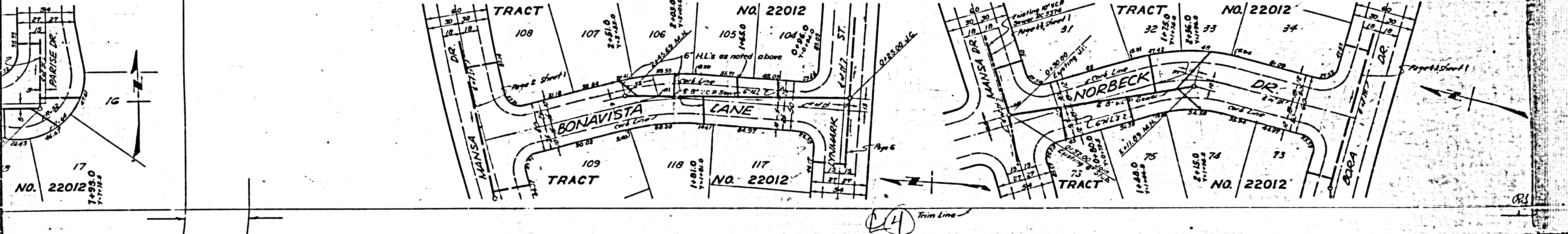
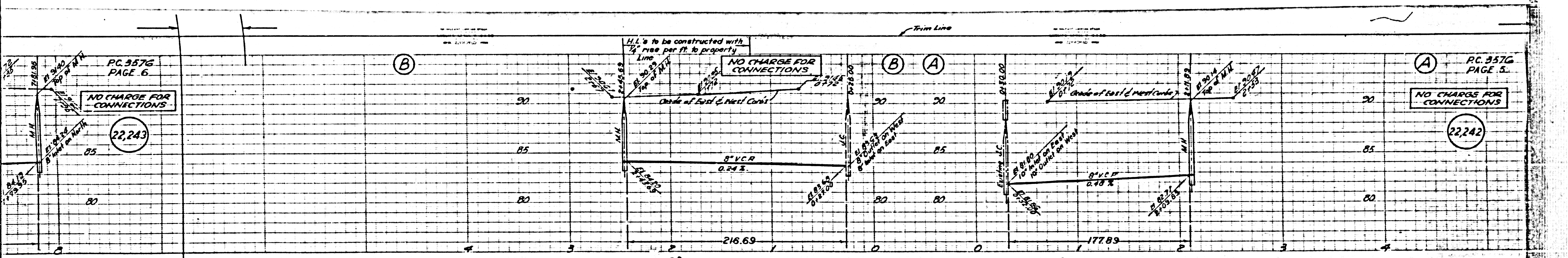
NO CHARGE FOR CONNECTIONS

22241

PC 3576

40

Page



RC. 3576
PAGE 6

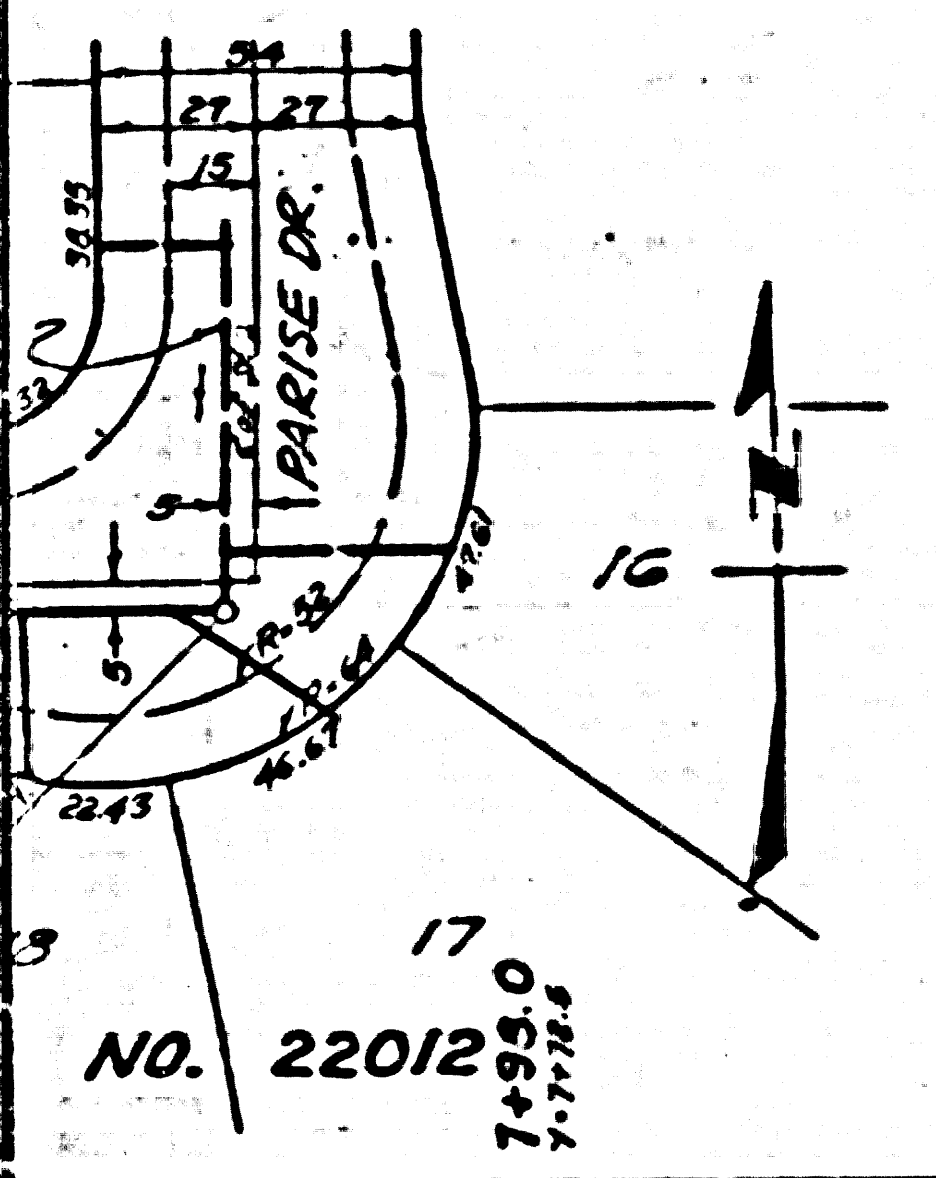
RC. 3576
PAGE 5

NO CHARGE FOR CONNECTIONS

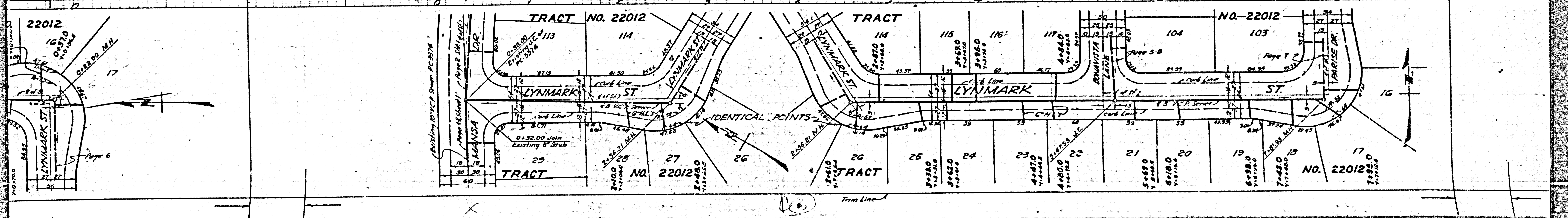
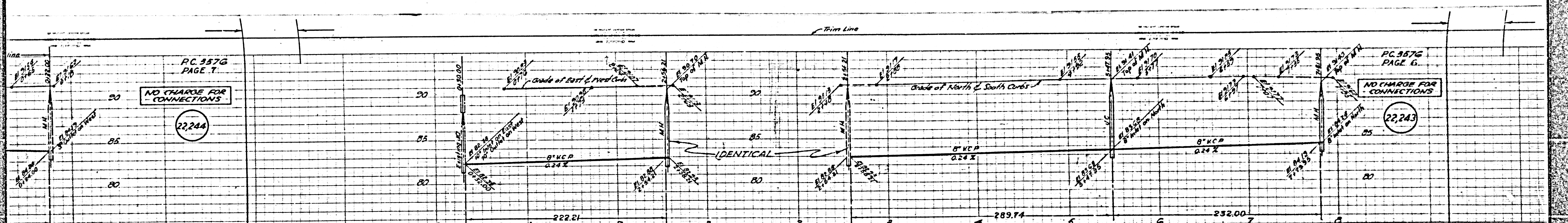
NO CHARGE FOR CONNECTIONS

22,243

22,242



14 Trim Line



PC 357G
PAGE 7

NO CHARGE FOR
CONNECTIONS

22,244

PC 357G
PAGE 6

NO CHARGE FOR
CONNECTIONS

22,243

22012

TRACT NO. 22012

TRACT

NO. 22012

TRACT

NO. 22012

Page 6

Page 5-B

Page 7-2

22

23

24

25

26

27

28

29

L

PC 3576
PAGE 8

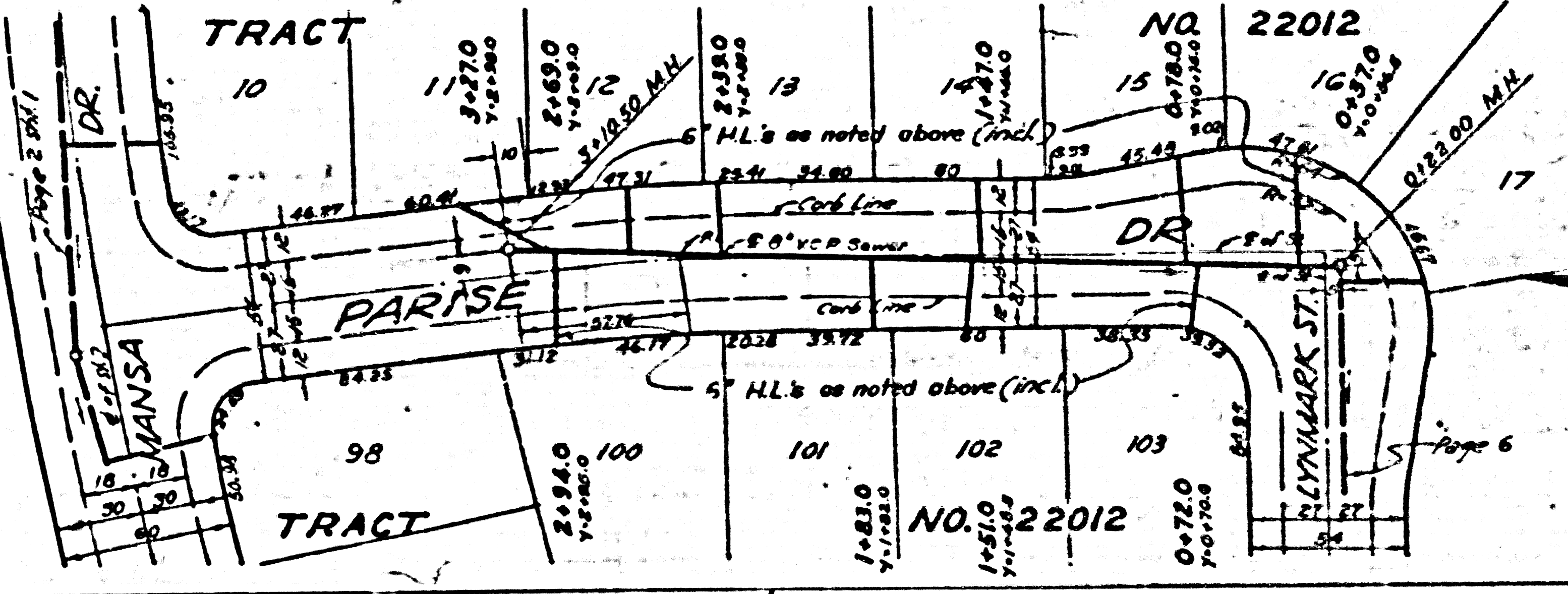
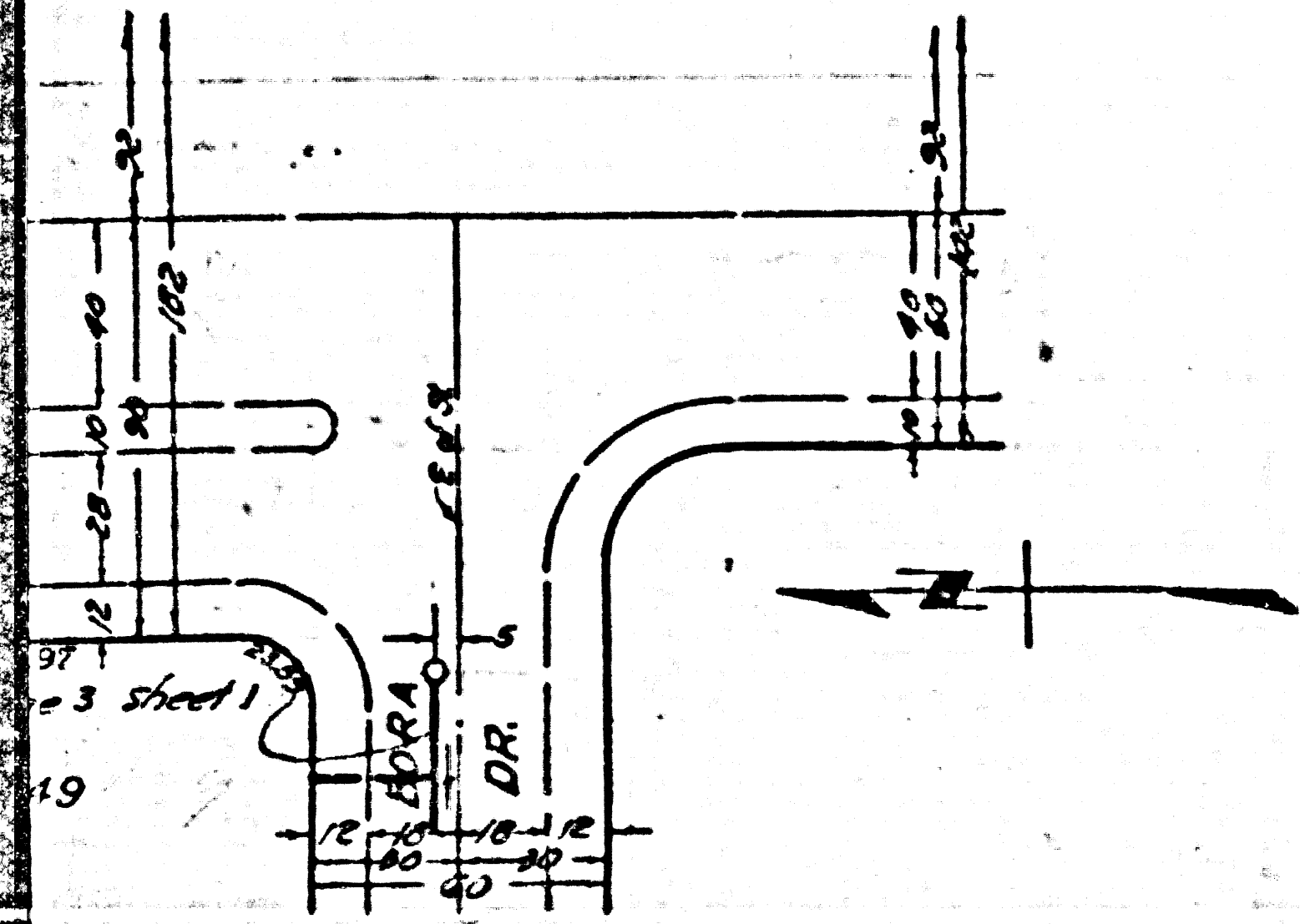
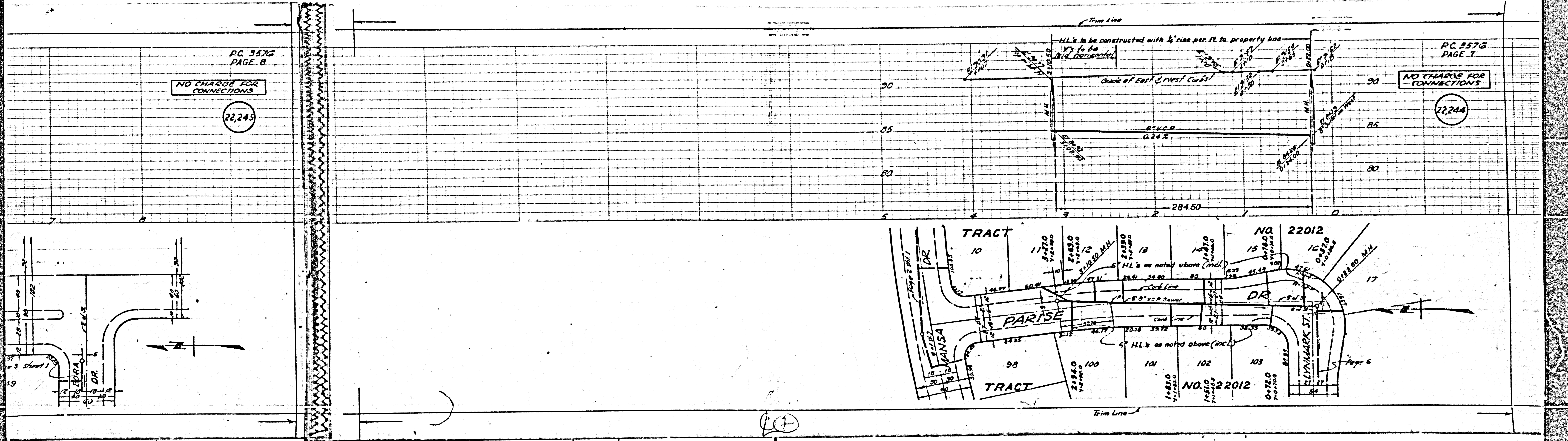
NO CHARGE FOR
CONNECTIONS

22,243

PC 3576
PAGE 7

NO CHARGE FOR
CONNECTIONS

22,244



(1)

