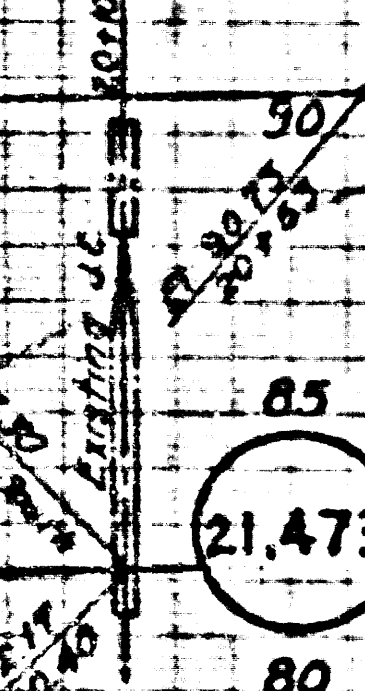


P.C. 3577
PAGE 2



22012
(81)

DR



5.M. SY 2754 Fd L & T on Valley View Ave
2. Intersection of Foster Rd. Sy L & T of
2 L & T to 12 apart Elev = 56.250

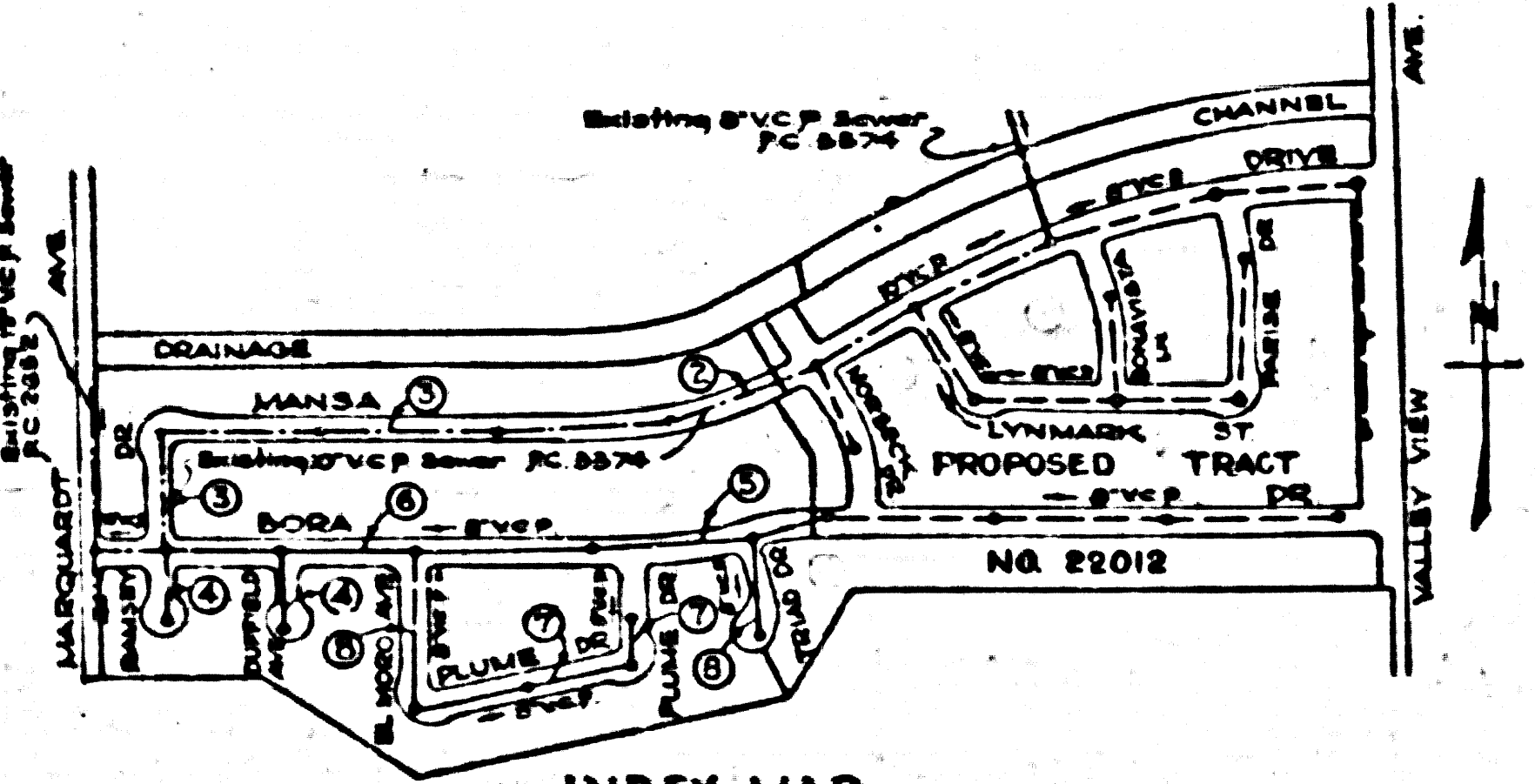
BELLFLOWER BLDG. DISTRICT No 4

- NOTE:**
Provide stakes on the property lines or property lines produced at right angles to the corner line of the center line of each manhole.
No representative of the County Engineer will survey or layout any portion of the work.
The owner or his authorized representative shall furnish the County Engineer with grade sheets and stations for all house laterals and Y branches and shall provide stakes for them at their proper locations with stationing plainly marked. Any change in location shall be requested in writing by the owner or his representative.
No revisions shall be made in these plans without the approval of the County Engineer.
1. Use standard manhole frames and covers, S-8-117.
 2. Use standard strength pipe except as noted.
 3. Use cement mortar for all vitrified clay pipe joints.
 4. Reverse all trench within paved area to meet L.A. County Road Dept. or California State Highway Dept. requirements in accordance with permit.
 5. Encase four feet of sewer at points of interference with poles, S-8-119.
 6. House laterals to be constructed with inverts at property line 6 feet below curb grade except as noted.
 7. All structures shall be brick sewer structures, S-8-104.
 8. For allowable leakage test, use Formula No. 1, Spec's., Sec. 51.
 9. Manhole tops in unimproved Right-Of-Way to be 6" above finish grade.

Sheet	Pages
1	1-4
2	5-8

Note: Figures in circles indicate Page Numbers.

NO CHARGE FOR CONNECTIONS
A. G. Rosenthal 9-3-55



INDEX MAP
P.C. 3577 TRACT No 21570
SCALE: 1"=400'

Revised 9-30-55

PROFILE, ALIGNMENT AND GRADE OF SANITARY SEWERS TO BE CONSTRUCTED IN TRACT No 21570

PRIVATE CONTRACT NO. 3577
W. S. 34
2 SHEETS
Scale: 1"=40' JULY 1955
PREPARED IN THE OFFICE OF
A. G. ROSENTHAL & ASSOCIATES
No. 4 & 1/2 Hill St.
FOR LEGEND SEE PLAN NO. 5064

NOTE:
Grades to which this improvement is to be constructed are shown on plans and profiles. Grade points for top of curbs, corner line of streets, or corner line of alleys are shown by circles on profiles. At all points between designated points the grade shall be established as to conform to a straight line drawn between said designated points.
Elevations are in feet above U.S.C.S. datum or mean sea level.
This drawing and the data hereon are hereby made a part of the specifications.
Work shall be constructed according to specifications on file in the office of the County Engineer and shall be prosecuted only at the expense of the County Engineer.
Before work can be started, the contractor must obtain a permit to excavate in County street from the L.A. County Road Dept., 1128 W. 2nd St. and make a deposit with the County Engineer, Box 5264, North Hollywood, Calif. \$25.00. Bondsmen/factors to cover the cost of construction inspection and record plans.
Approval of this plan by the County of Los Angeles does not constitute a representation as to the accuracy of the location of or the contents or non-existence of any underground utility, pipe, or structure within the limits of this project. This note applies to all sheets.
If work is to be done on a State Highway, a permit must be obtained from the State of California, Division of Highways, 1200 South Spring Street.

COUNTY OF LOS ANGELES, CALIFORNIA
Approved, William J. Fox, County Engineer
Approved, A. M. Rose
A. G. Rosenthal
City Public Works DIST. NO. 18.
Checked by: J. K. Oude 8-4-55
Office of County Engineer, Box 6 & Hill, 2-456

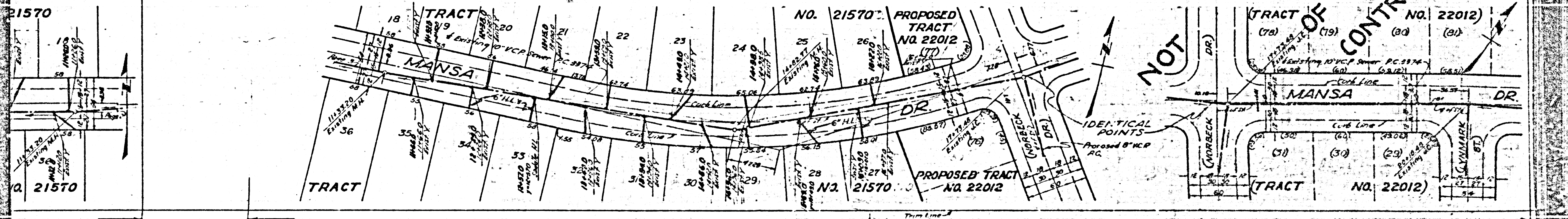
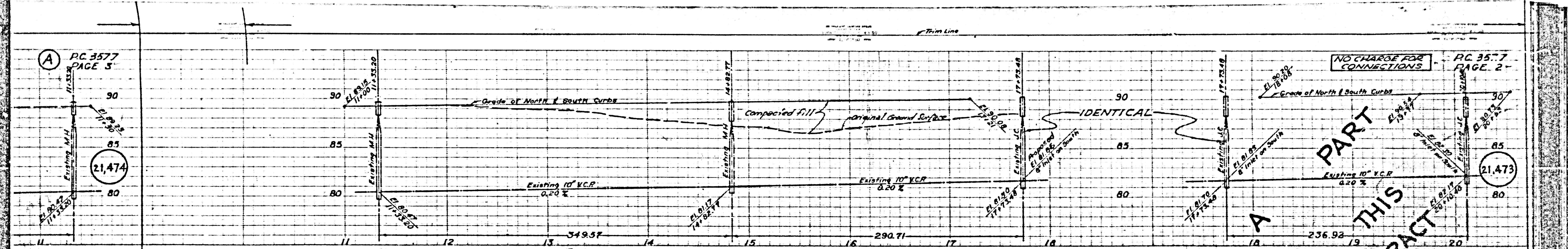
P.C. 3577
PAGE 1

21,472

at

A PC 3577 PAGE 5

NO CHARGE FOR CONNECTIONS PC 3577 PAGE 2



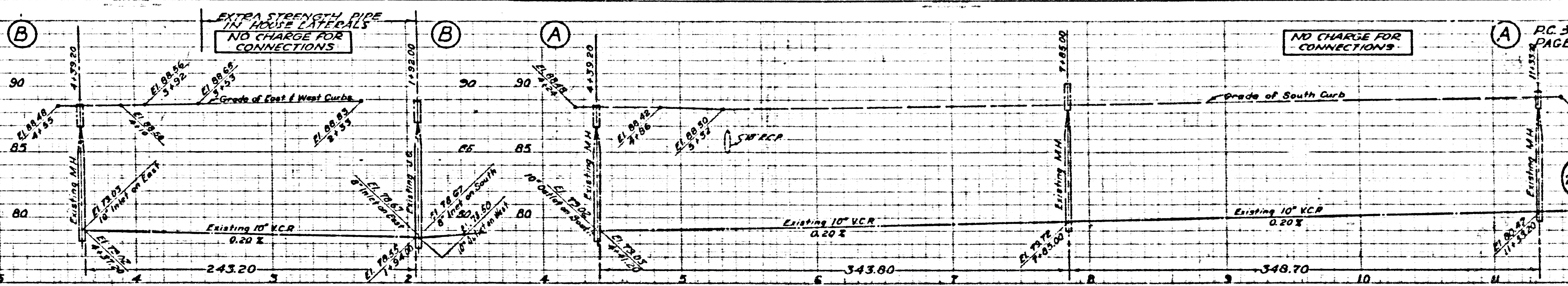
A PART OF THIS CONTRACT

NOT

PC. 3577
PAGE 4

NO CHARGE FOR CONNECTIONS

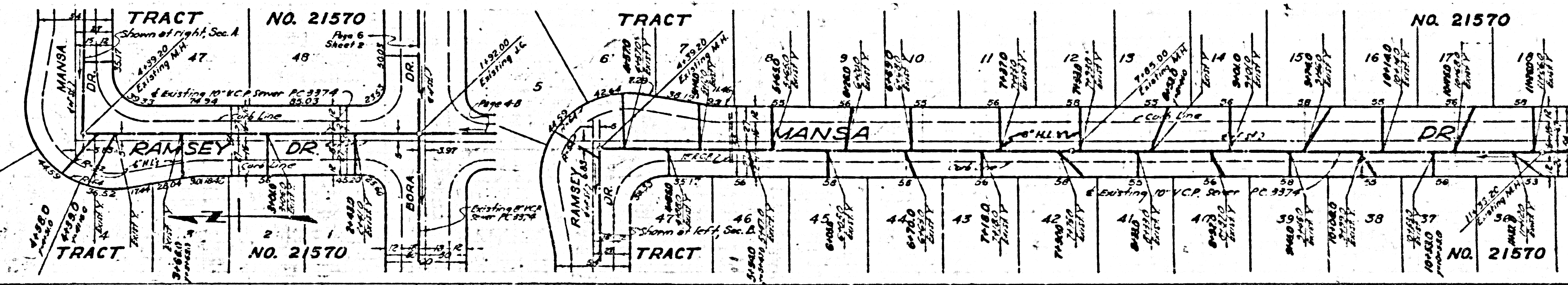
21,475



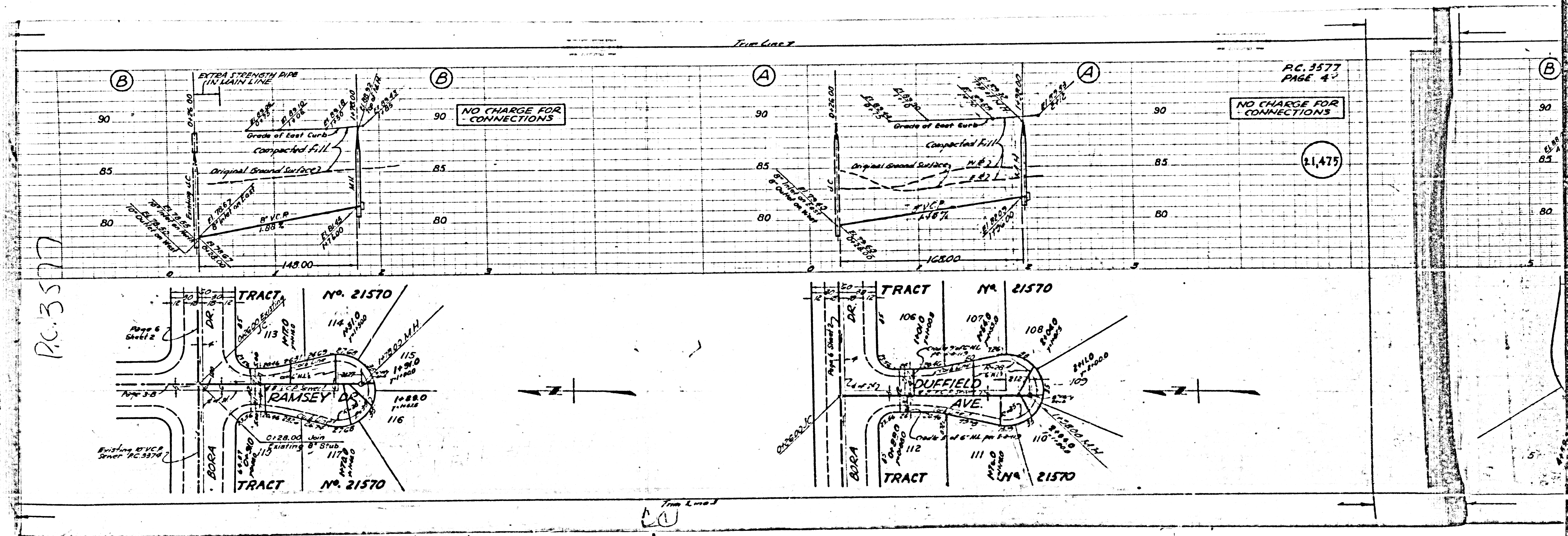
NO CHARGE FOR CONNECTIONS

PC. 3577
PAGE 5

21,474



TRACT



P.C. 3577
PAGE 6

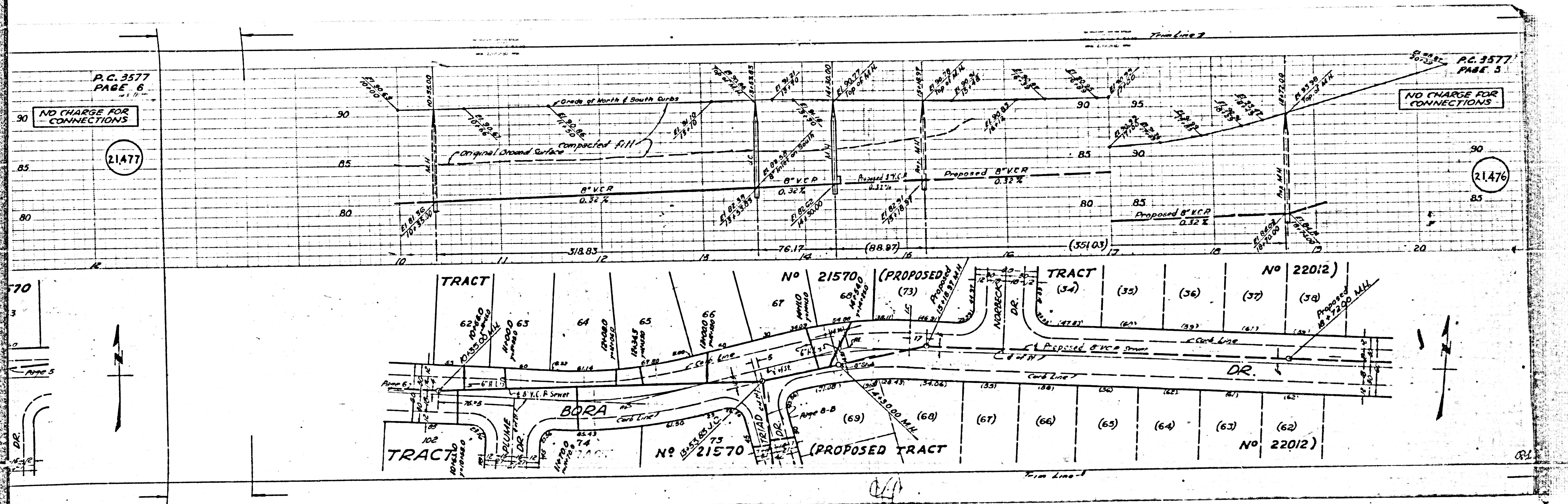
NO CHARGE FOR CONNECTIONS

21477

P.C. 3577
PAGE 5

NO CHARGE FOR CONNECTIONS

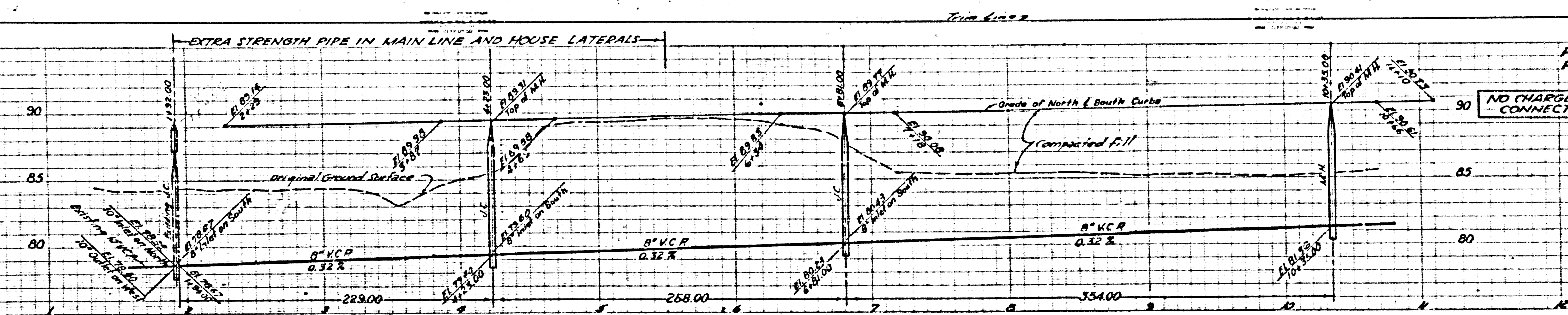
21476



NO CHARGE FOR CONNECTIONS

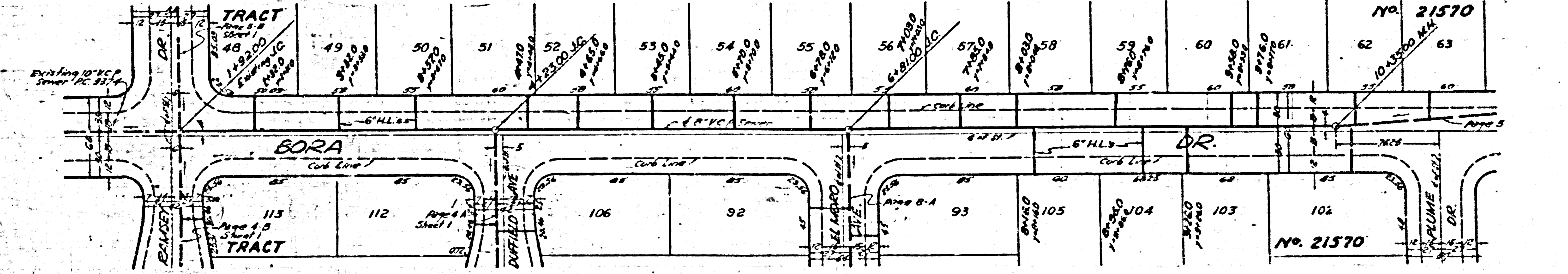
21,478

EXTRA STRENGTH PIPE IN MAIN LINE AND HOUSE LATERALS



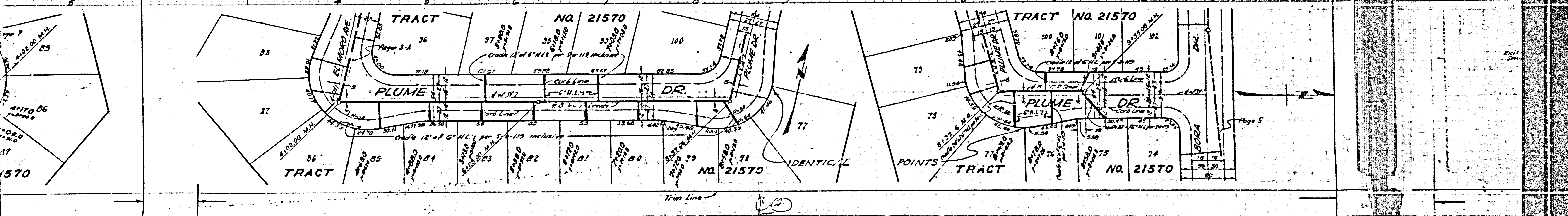
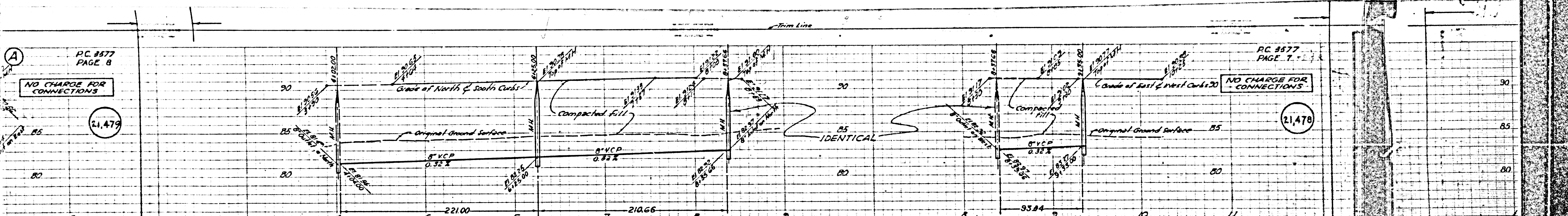
NO CHARGE FOR CONNECTIONS

21,477



Page 5

10



PC 9577
PAGE 8

PC 9577
PAGE 7

NO CHARGE FOR CONNECTIONS

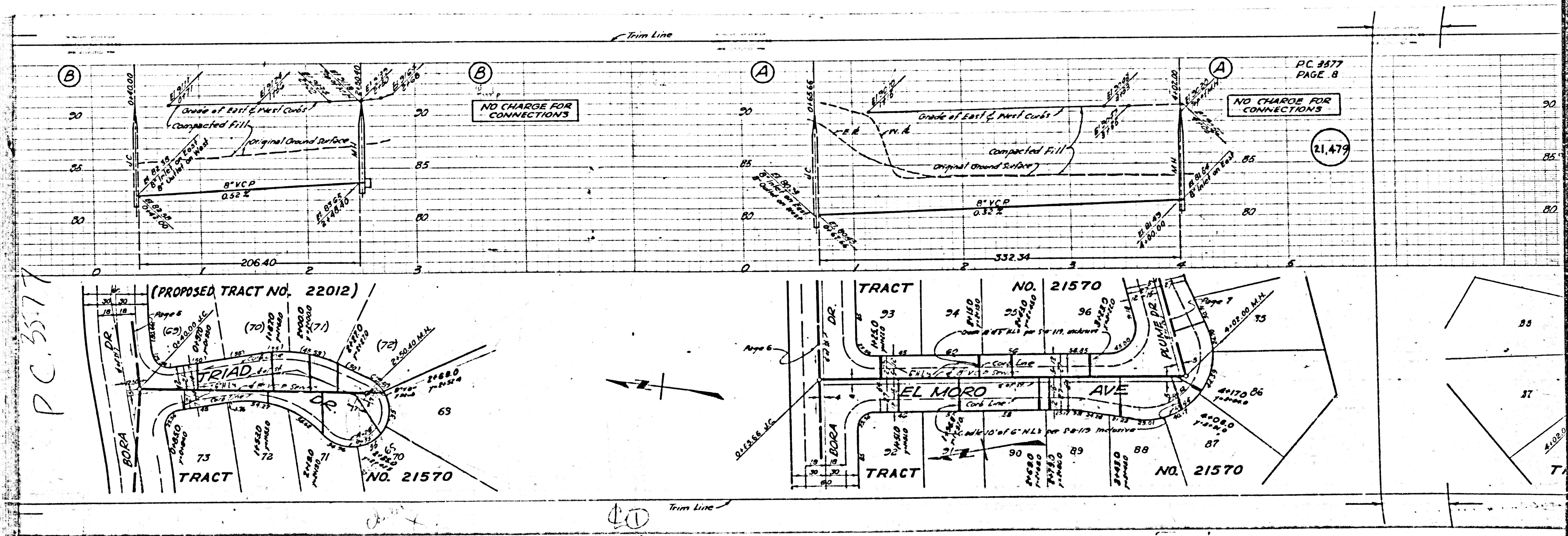
NO CHARGE FOR CONNECTIONS

21,479

21,478

570

Page 5



PC 3577

PC 3577
PAGE 8

NO CHARGE FOR CONNECTIONS

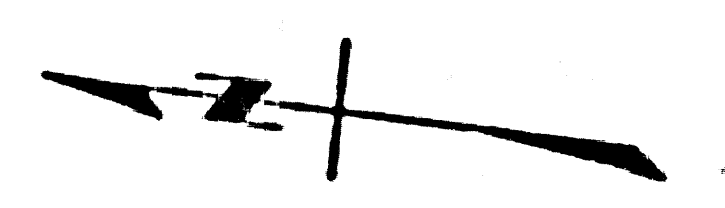
21,479

(PROPOSED TRACT NO. 22012)

TRACT NO. 21570

EL MORO AVE

TRACT NO. 21570



Trim Line