

PC.3579
PAGE 2

COLLECT CHARGE
AS INDICATED

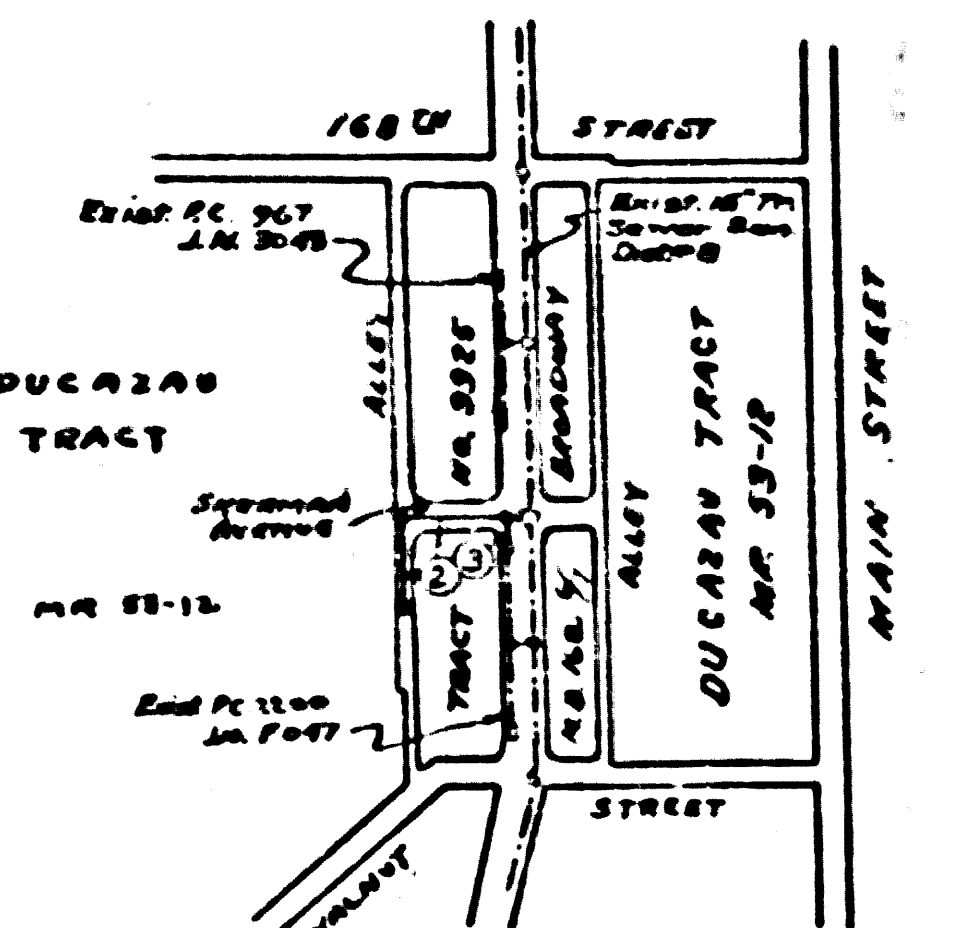
22,266

St. Tank Sewer
San Dist. N. 8.

LENNOX BLDG. DIST. N^o 7

B.M. WX-12 Elev. 31.210 C.S. F.B. 1470-164
Broadway & Walnut St.
Bent Spikes in pavement, 14' E. & 50' S. of intersection

SHEET	PAGE
1	1-3



INDEX MAP
P.C. 3579
Scale 1"=600'

checked 3-6-56 *McLaren*

CONNECTION CHARGES
AS INDICATED
As Indicated 12-15-55

APPROVED INDUSTRIAL WASTE
DIVISION
BY *Arthur Lusk* 12/9/55

- NOTE:
- Provide stakes on the property lines or property lines produced at right angles to the sewer line at the center line of each manhole.
 - No representative of the County Engineer will survey or layout any portion of the work.
 - The owner or his authorized representative shall furnish the County Engineer with grade sheets and stations for all house laterals and Y branches and shall provide stakes for them at their proper locations with stationing plainly marked. Any change in location shall be requested in writing by the owner or his representative.
 - No revisions shall be made in these plans without the approval of the County Engineer.
 - Use standard manhole frames and covers, S-a-112.
 - Use standard strength pipe except as noted.
 - Use cement mortar for all vitrified clay pipe joints.
 - Resurface all trench within paved area to meet L.A. County Road Dept. or California State Highway Dept. requirements in accordance with permit.
 - Encase four feet of sewer at points of interference with poles, S-a-119.
 - House laterals to be constructed with 1/4 rise per foot to property line.
 - All structures shall be brick sewer structures, S-a-104, except as noted.
 - For allowable leakage test, use Formula No. 1, Specs., Sec. 81.
 - Manhole tops in unimproved Right-Of-Way to be 4" above finish grade.
- The contractor will satisfy himself of location of all substructures.

PROFILE, ALIGNMENT AND GRADE OF
SANITARY SEWERS
TO BE CONSTRUCTED IN
SHERMAN AVENUE
AND
FIRST ALLEY WEST OF BROADWAY

PRIVATE CONTRACT NO. 3579
W. S. 26
ONE SHEET

Scale: 1"=10' HORIZ. 1"=4' VERT.
JULY 1955
PREPARED IN THE OFFICE OF
RALPH B. NUNNELLY

Ralph B. Nunnelly C.E. No. 8080
FOR LEGEND SEE PLAN NO. S-a-64

NOTE:

Grades to which this improvement is to be constructed are shown on plans and profiles. Grade points for top of curb, center line of street, or center line of alley are shown by circles on profiles. At all points between designated points the grade shall be established so as to conform to a straight line drawn between said designated points.

Horizontal are in feet above U.S.C. & G.S. Sea Level Datum of 1929.

This drawing and the data herein are hereby made a part of the specifications.

Work shall be constructed according to specifications on file in the office of the County Engineer and shall be prosecuted only in the presence of the County Engineer.

Before work may be started, the contractor must obtain a permit to encroach in County streets from the L.A. County Road Dept., 108 W. 2nd St. and make a deposit with the County Engineer, Room 202, 252 South Broadway, sufficient to cover the cost of construction inspection and record plans.

Approval of this plan by the County of Los Angeles does not constitute a representation as to the accuracy of the location of or the existence or non-existence of any underground utility pipe, or structure within the limits of this project. It is a note applies to all sheets.

If work is to be done in State Highway, a permit must be obtained from the State of California, Division of Highways, 120 South Spring Street.

COUNTY OF LOS ANGELES, CALIFORNIA

Approved, John A. Lamb, County Engineer
A.P. Collins
Checked by *R. Lusk* 12-15-55
Office of County Engineer, Dep. C. & No. 784-0.

PAGE 1
PC. 3579

22,266

(3)

SHERMAN AVENUE, ET AL

PC. 3579
PC. 3579

8/201

Trim Line

RC.3579
PAGE 2

COLLECT CHARGE
AS INDICATED

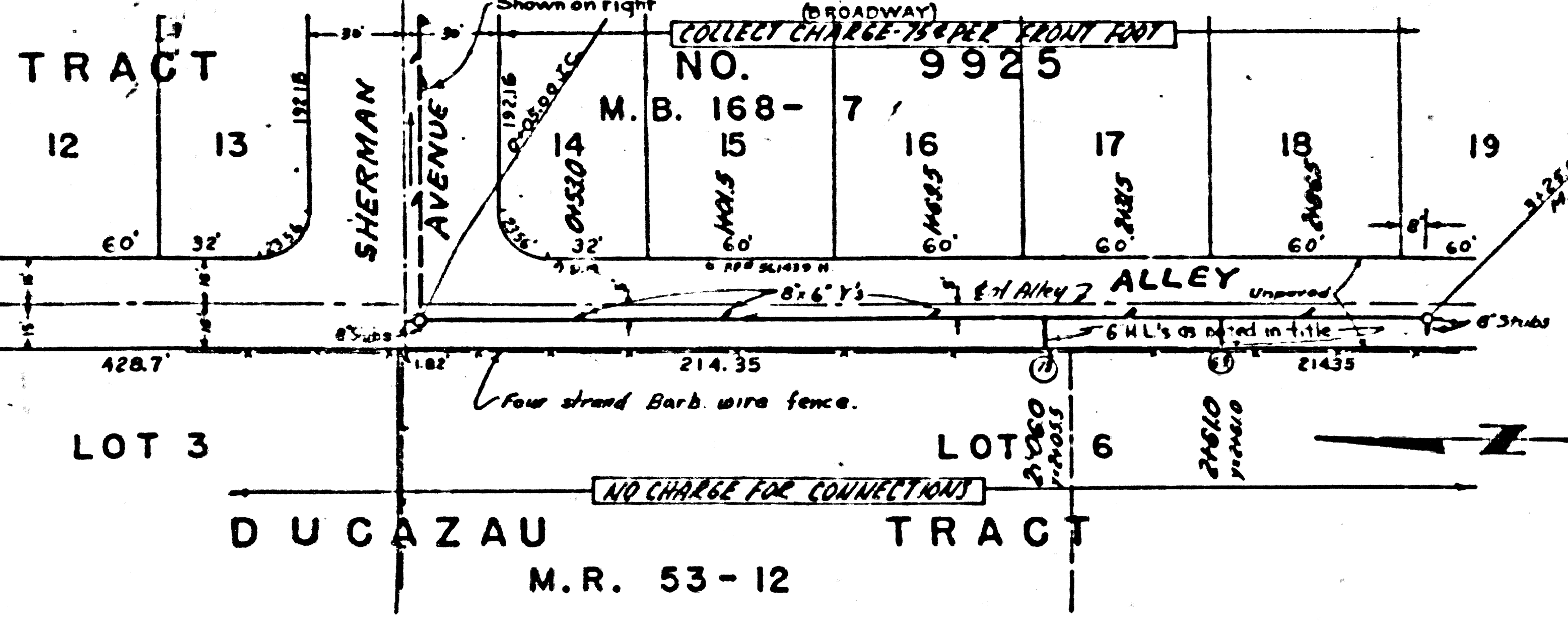
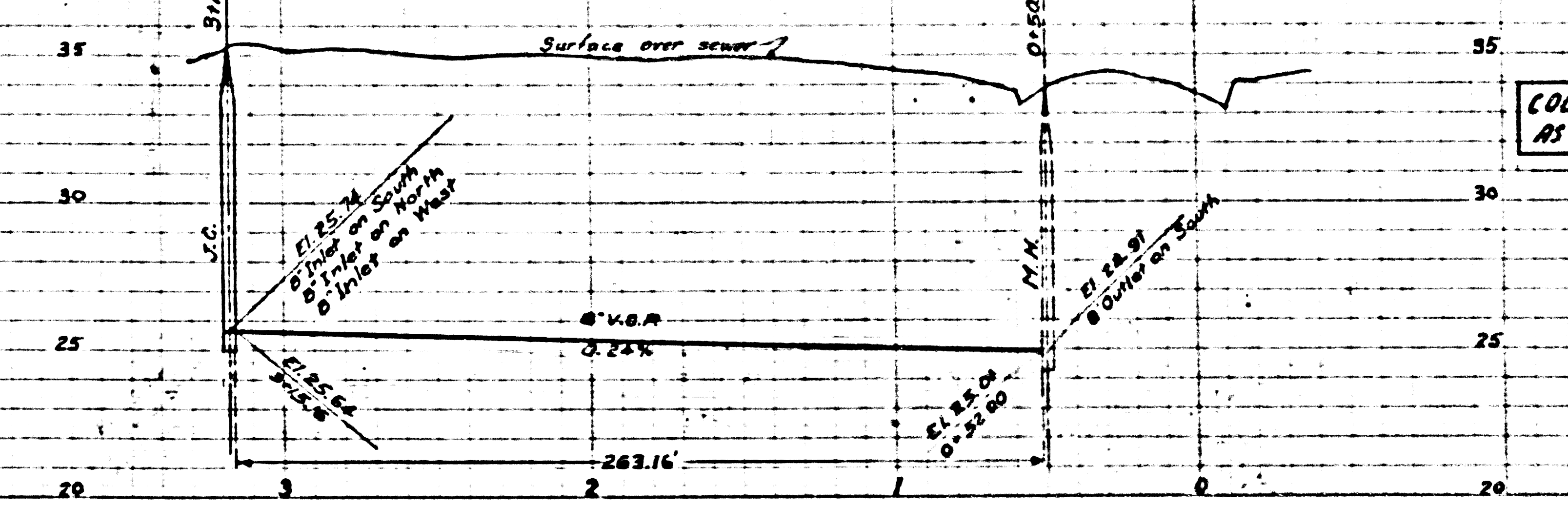
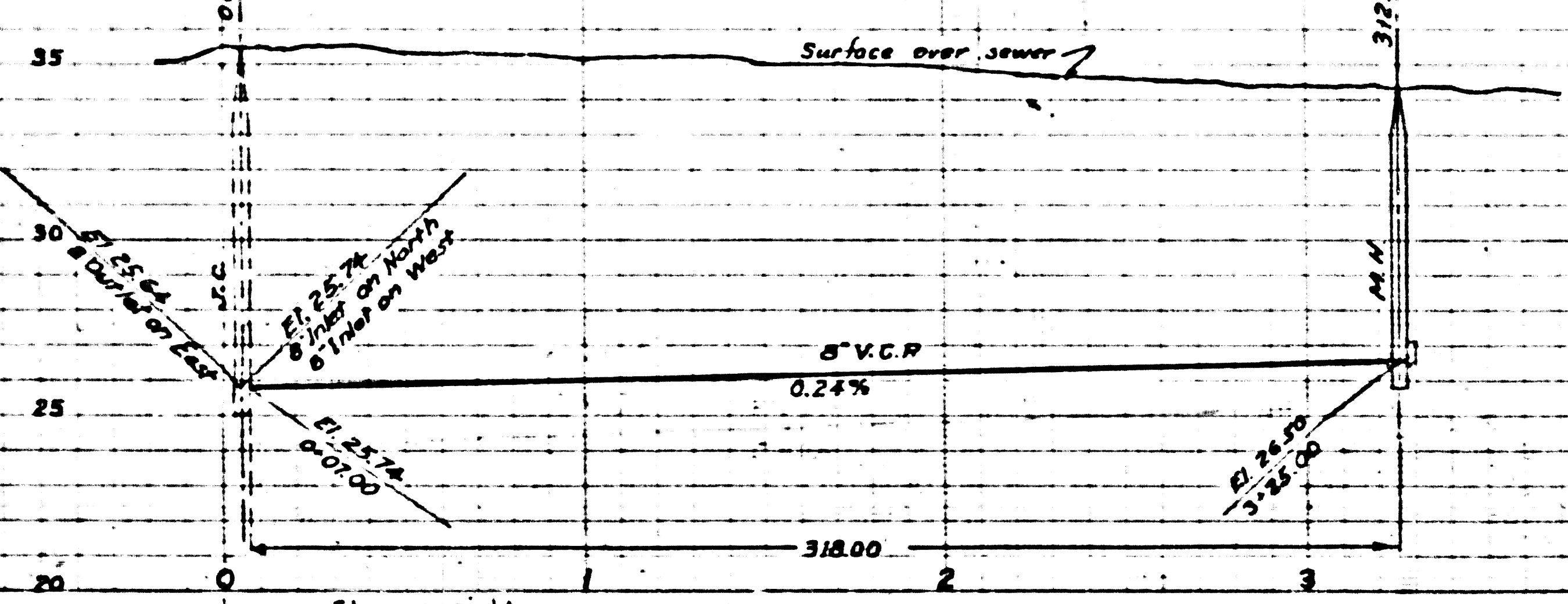
22266

(B)

(B)

(A)

(A)



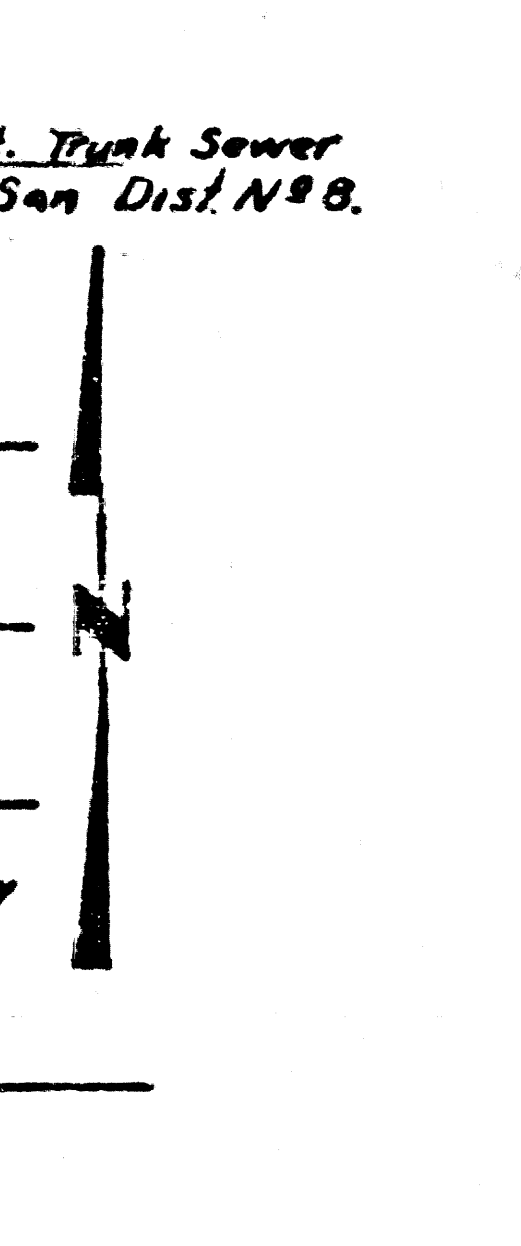
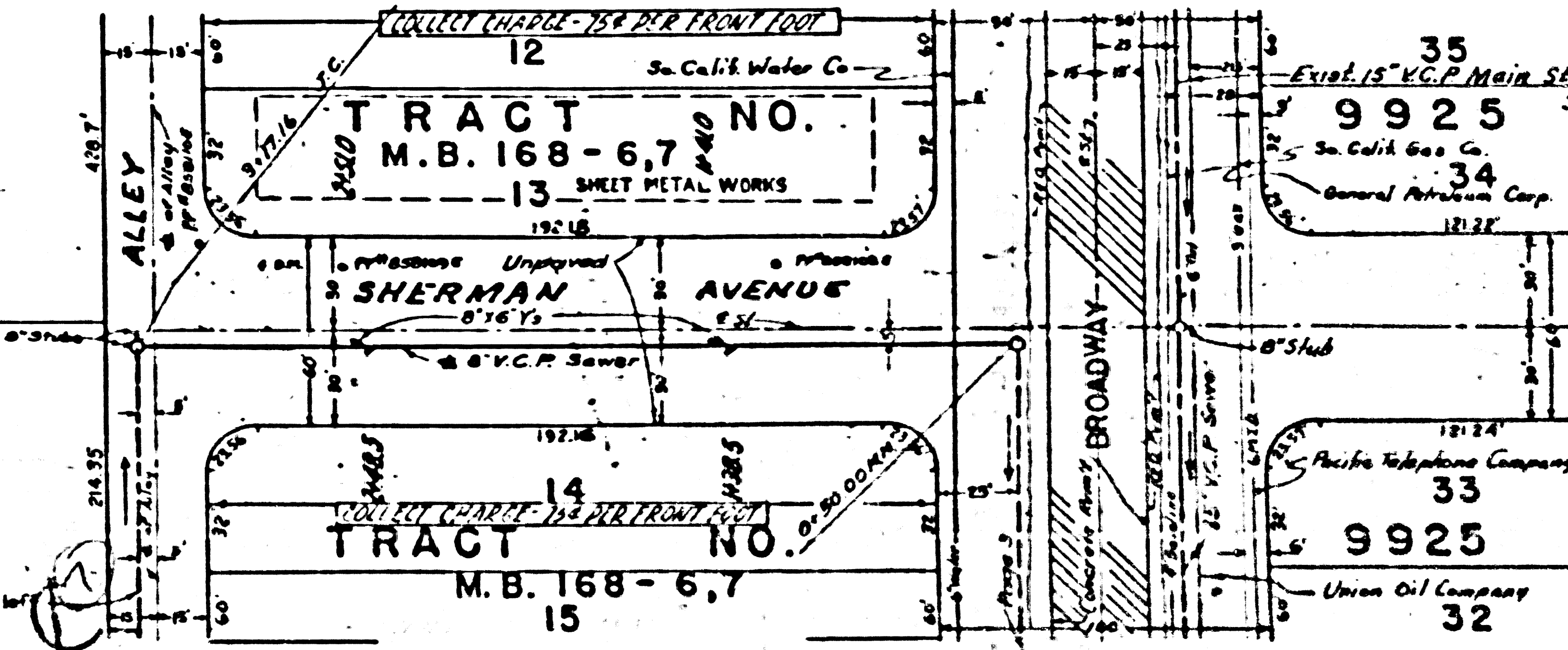
DUCAZAU
LOT 3

TRACT

M.R. 53-12

LOT 6

Shown on left



Trim Line

Trim Line

Trim Line

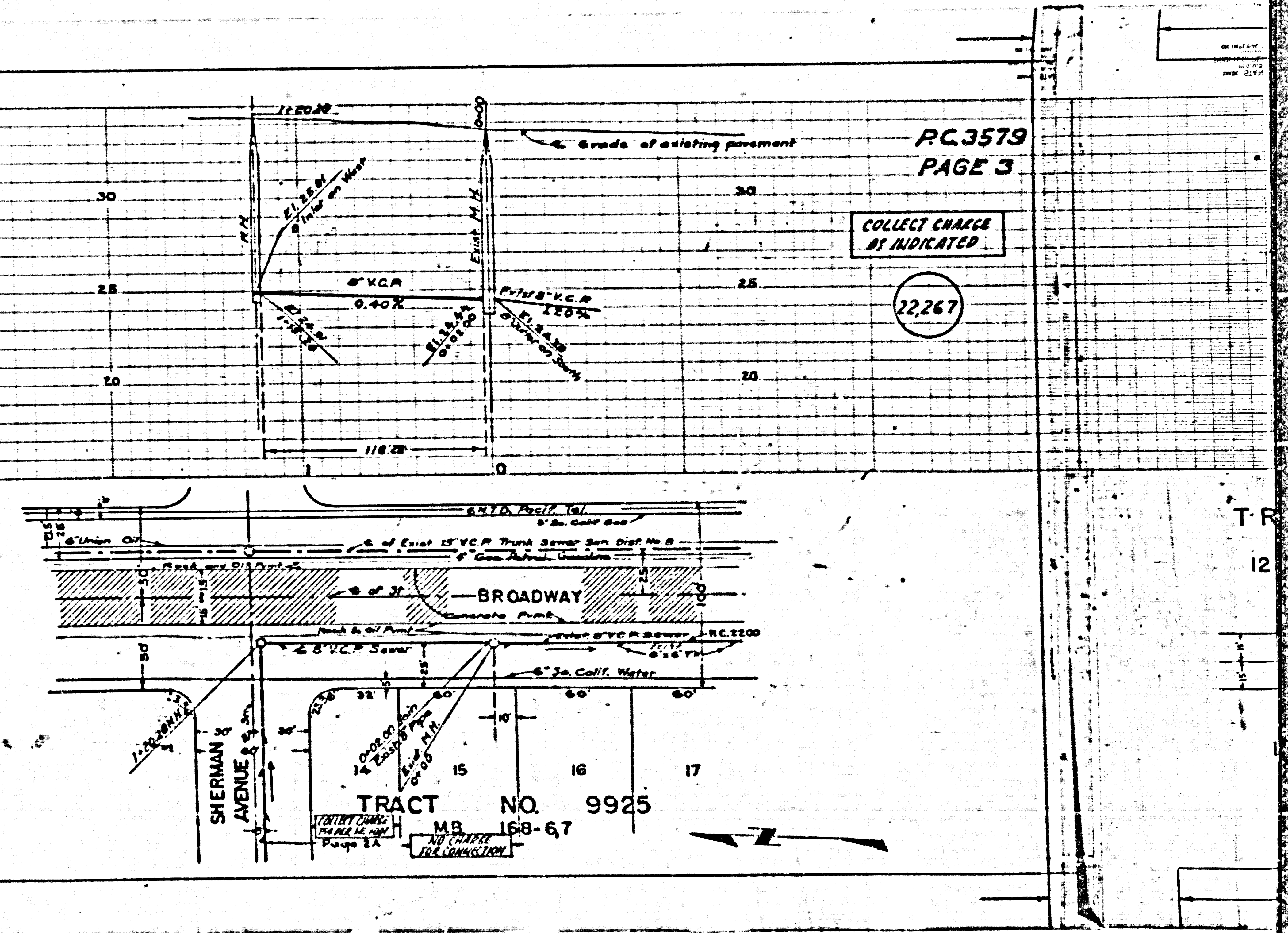
PC 3579

10

PC 3579
PAGE 3

COLLECT CHARGE
AS INDICATED

22267



T-R
12