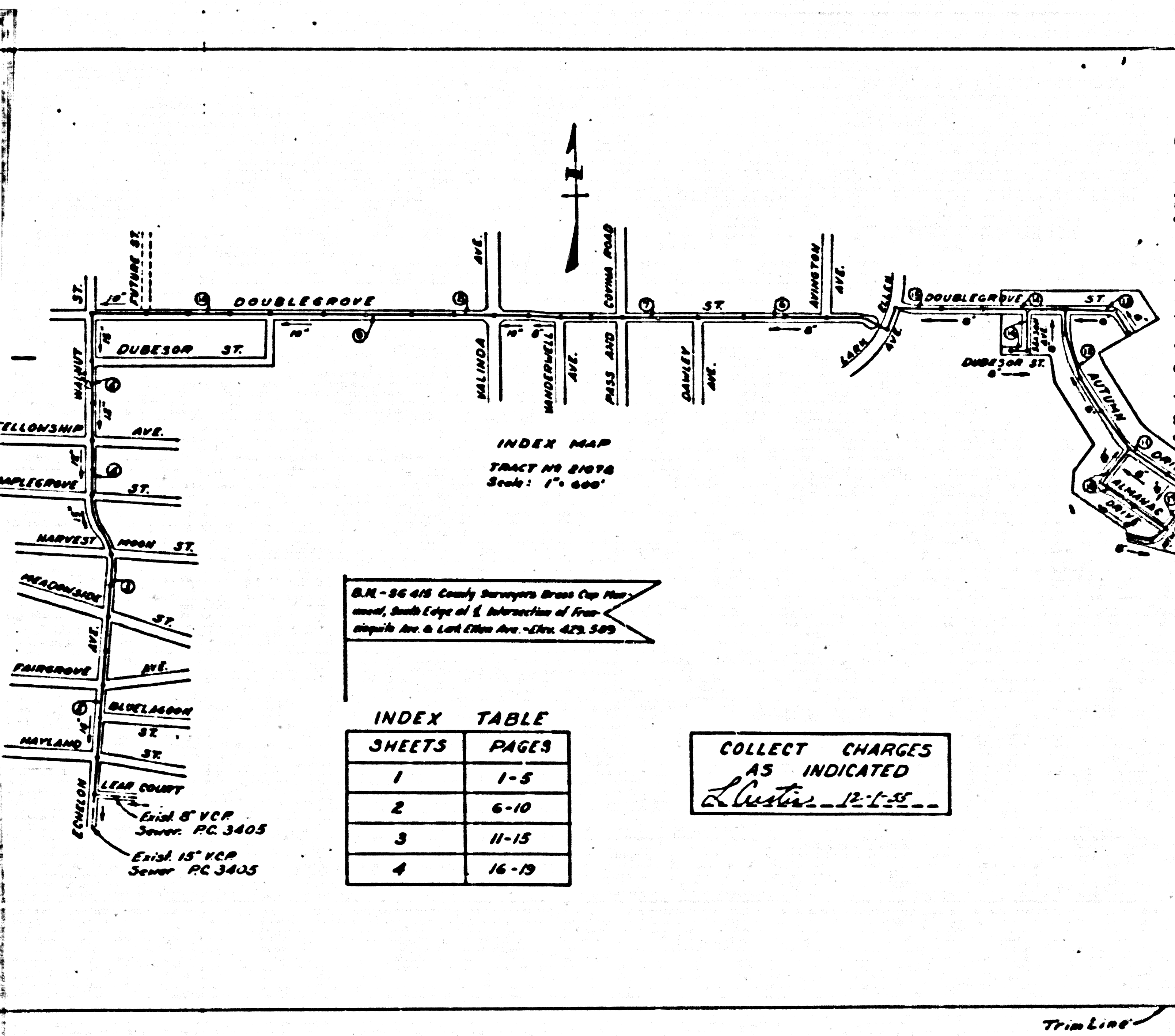
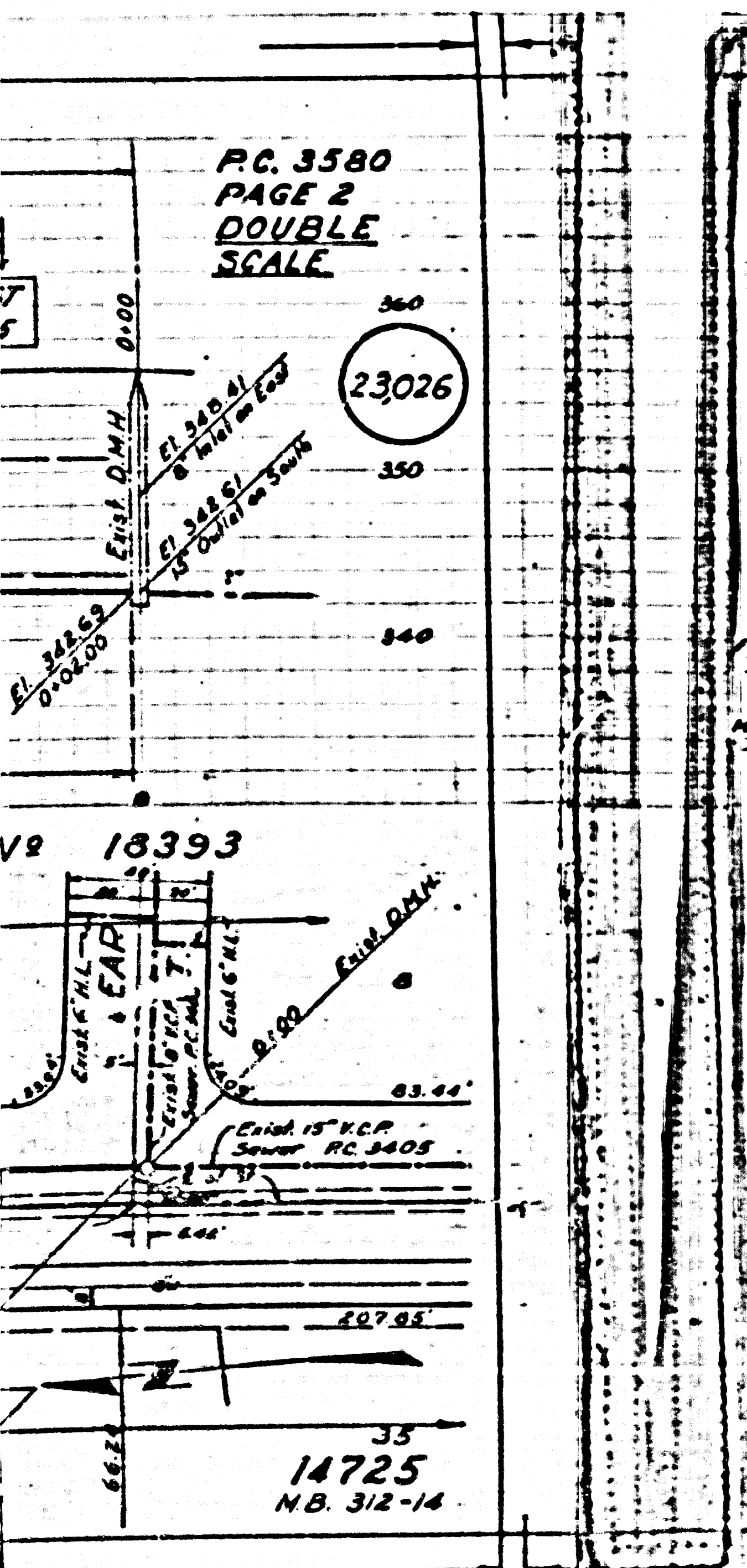


P.C. 3580
PAGE 2
DOUBLE
SCALE



INDEX MAP
TRACT NO 21078
Scale: 1" = 600'

B.M. - 98 415 County Surveyors Brass Cup Marker South Edge of S. Intersection of From - 400' to 400' East 1/2 Sec. 12 - 1/2 Sec. 309

INDEX TABLE	
SHEETS	PAGES
1	1-5
2	6-10
3	11-15
4	16-19

COLLECT CHARGES
AS INDICATED
Lester - P.C. 3580

PUENTE BLDG. DIST. NO 2

- NOTE:**
Provide stakes on the property lines or property lines produced at right angles to the sewer line at the center line of each manhole.
No representative of the County Engineer will survey or layout any portion of the work.
The owner or his authorized representative shall furnish the County Engineer with grade sheets and stations for all house laterals and Y branches and shall provide stakes for them at these street locations with stationing plainly marked. Any change in location shall be requested in writing by the owner or his representative.
No revisions shall be made in these plans without the approval of the County Engineer.
1. Use standard manhole frames and covers, S-2-117.
 2. Use standard strength pipe except as noted.
 3. Use cement mortar for all vitrified clay pipe joints.
 4. Resurface all trench within paved area to meet L.A. County Road Dept. or California State Highway Dept. requirements in accordance with plans.
 5. Encase four feet of cover at points of interference with pipe, S-2-119.
 6. House laterals to be constructed with inverts at property line 6" below curb grade except as noted.
 7. All structures shall be brick sewer structures, S-2-104.
 8. For allowable leakage test, use Formula No. 1, Spec's, Sec. 51.
 9. Manhole tops in unimproved Right-of-Way to be 6" above finish grade.

NOTE: These revisions are tentatively approved by the County Engineer. Final approval must be granted by the Board of Supervisors.
Revisions: Sewer Grade Only
Checked: *P. K. K...* 4-10-56
Office of County Engineer
Los Angeles, California

Checked 7-13-56 *W. J. ...*

PROFILE ALIGNMENT AND GRADE OF
SANITARY SEWERS
TO BE CONSTRUCTED IN
TRACT NO 21078

P.C. 3580
PAGE 1
DOUBLE
SCALE

PRIVATE CONTRACT NO. 3580
W. S. 38
4 SHEETS
Scale: 1" = 600' SEPT, 1955
PREPARED IN THE OFFICES OF
CONLEY ENGINEERING CO.
Hugh G. Conley
Reg. P.E. No. 4466

NOTE:
Grades to which this improvement is to be constructed are shown on plans and profiles. Grade points for top of curbs, center line of streets, or center line of pipes are shown by circles on profiles. All points between designated points the grade shall be established as to conform to a straight line drawn between said designated points.
Elevations are in feet above U.S.C.G.S. sea level datum of 1929.
This drawing and the data hereon are hereby made a part of the specifications.
Work shall be constructed according to specifications on file in the office of the County Engineer and shall be prosecuted only in the presence of the County Engineer.
Before such can be started, the contractor shall obtain a permit to excavate in County streets from the L.A. County Road Dept., 105 to 2nd St. and make a deposit with the County Engineer, Room 340, 153 S. Broadway, sufficient to cover the cost of construction inspection and record plans.
Approval of this plan by the County of Los Angeles does not constitute a representation as to the accuracy of the location of or the existence or non-existence of any underground utility, pipe, or structure within the limits of this project. This note applies to all sheets.
If work is to be done in a State Highway, a permit must be obtained from the State of California, Division of Highways, 120 South Spring Street.
COUNTY OF LOS ANGELES, CALIFORNIA
Approved, John A. Lambie, County Engineer Approved, A. M. Ryan
A. P. Collins Chief Clerk, Los Angeles Dist. No. 18
P. K. K... District Engineer
Checked by: *P. K. K...* 12-1-55
Office of County Engineer, Reg. C. E. No. 7260

P.C. 3580
PAGE 1
DOUBLE
SCALE

P.C. 3580
PAGE 1
DOUBLE
SCALE

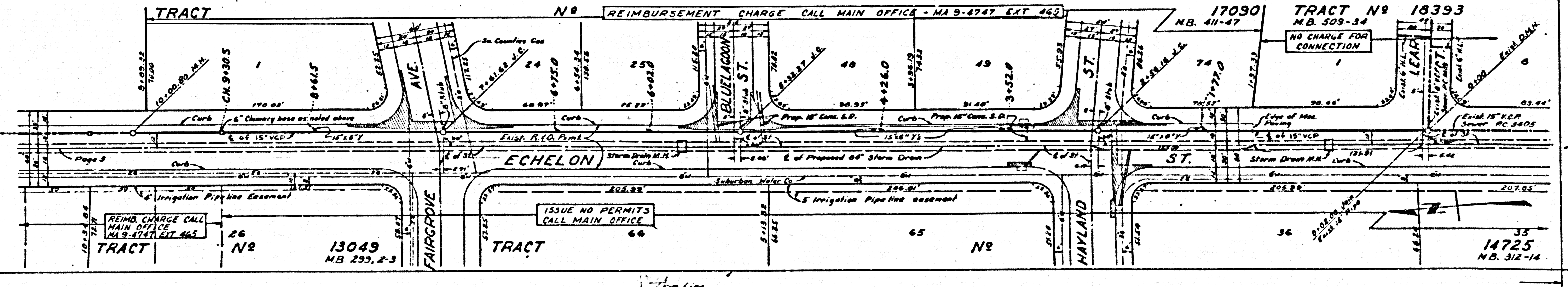
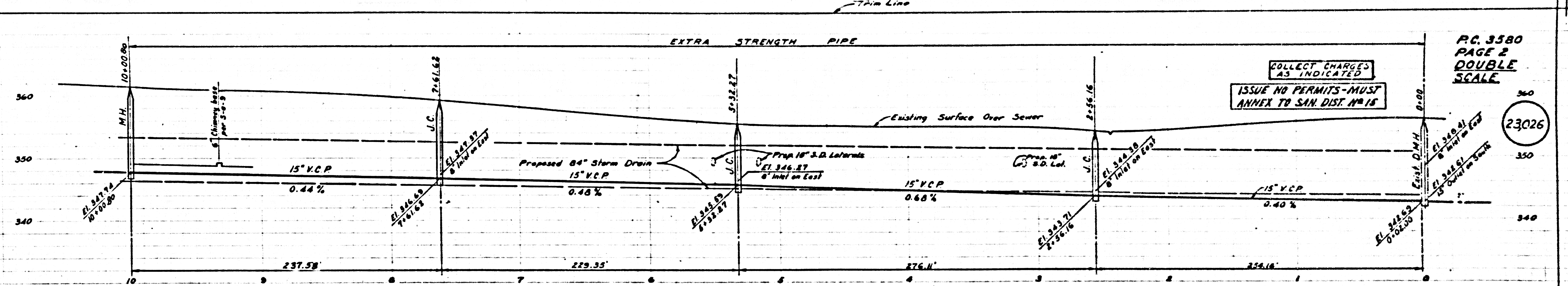
REIMBURSEMENT
 ALL LOTS THIS PAGE
 OFFICE - MA 9-4747

PC 3580
PAGE 3
DOUBLE
SCALE
23027

NO PERMITS - MUST
CALL TO SAN. DIST. #15

N# 16262
M.B. 375-8

N# 13049
M.B. 229, 2-3



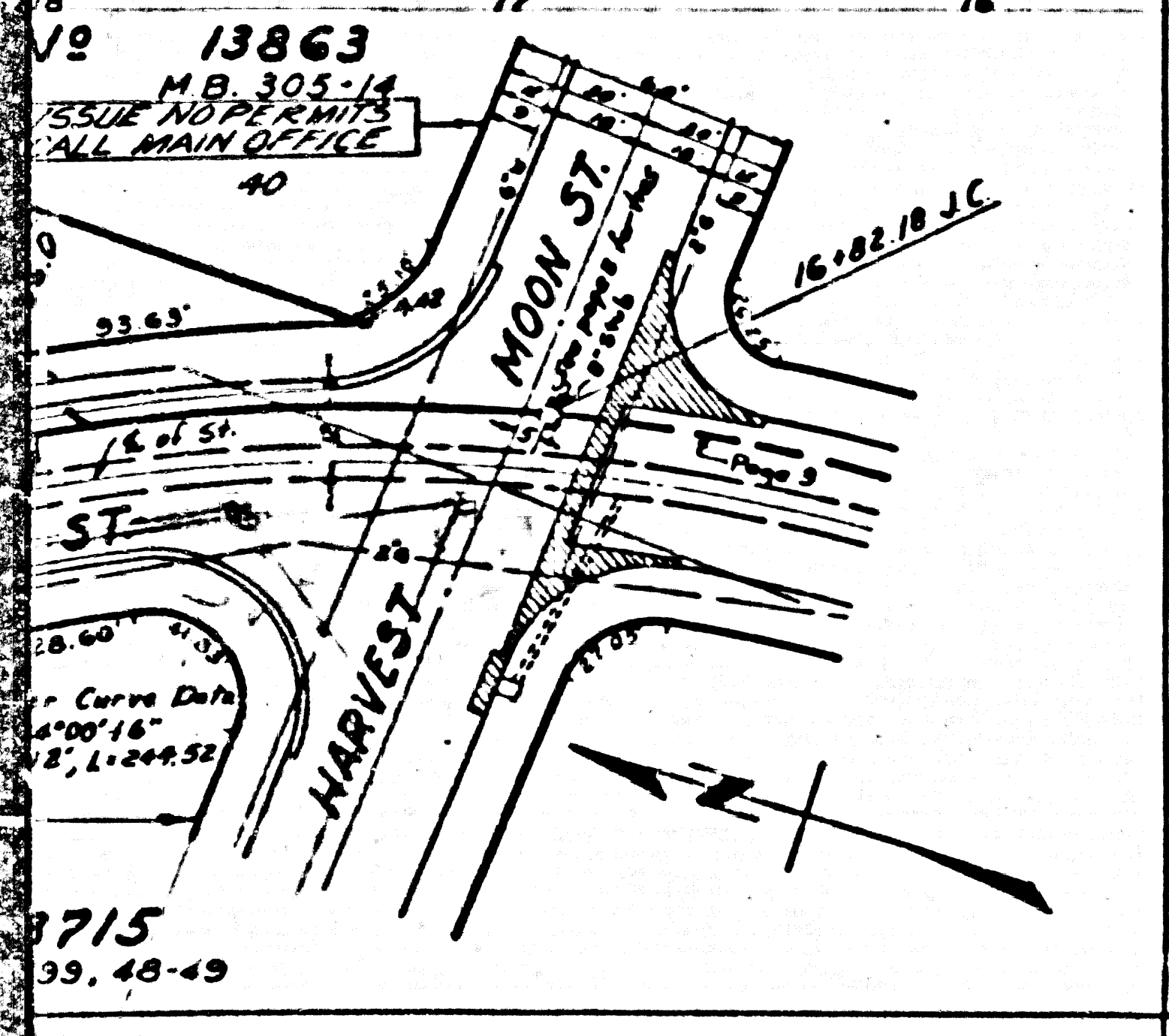
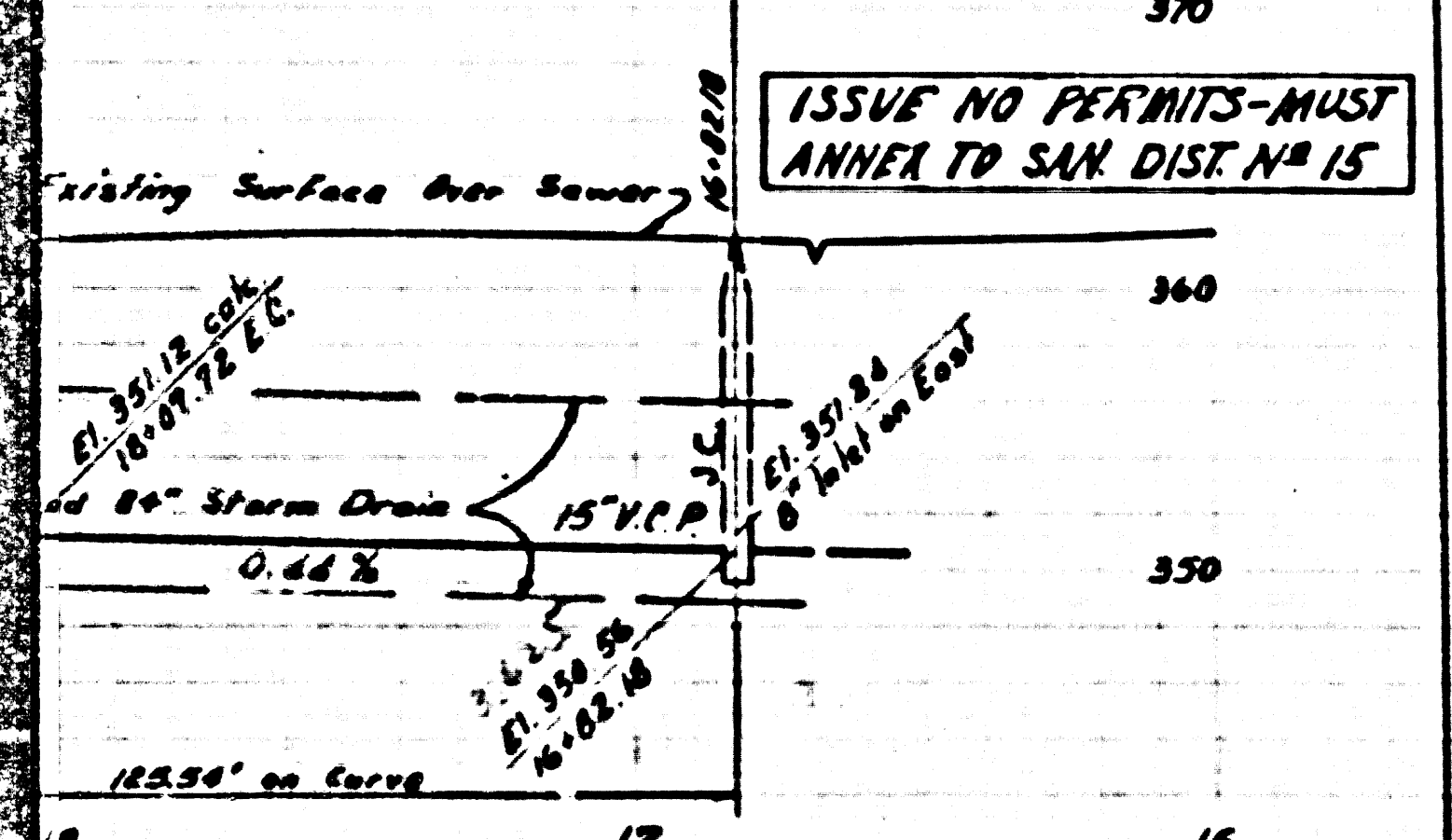
COLLECT CHARGES
 AS INDICATED

ISSUE NO PERMITS - MUST
 ANNEX TO SAN. DIST. #15

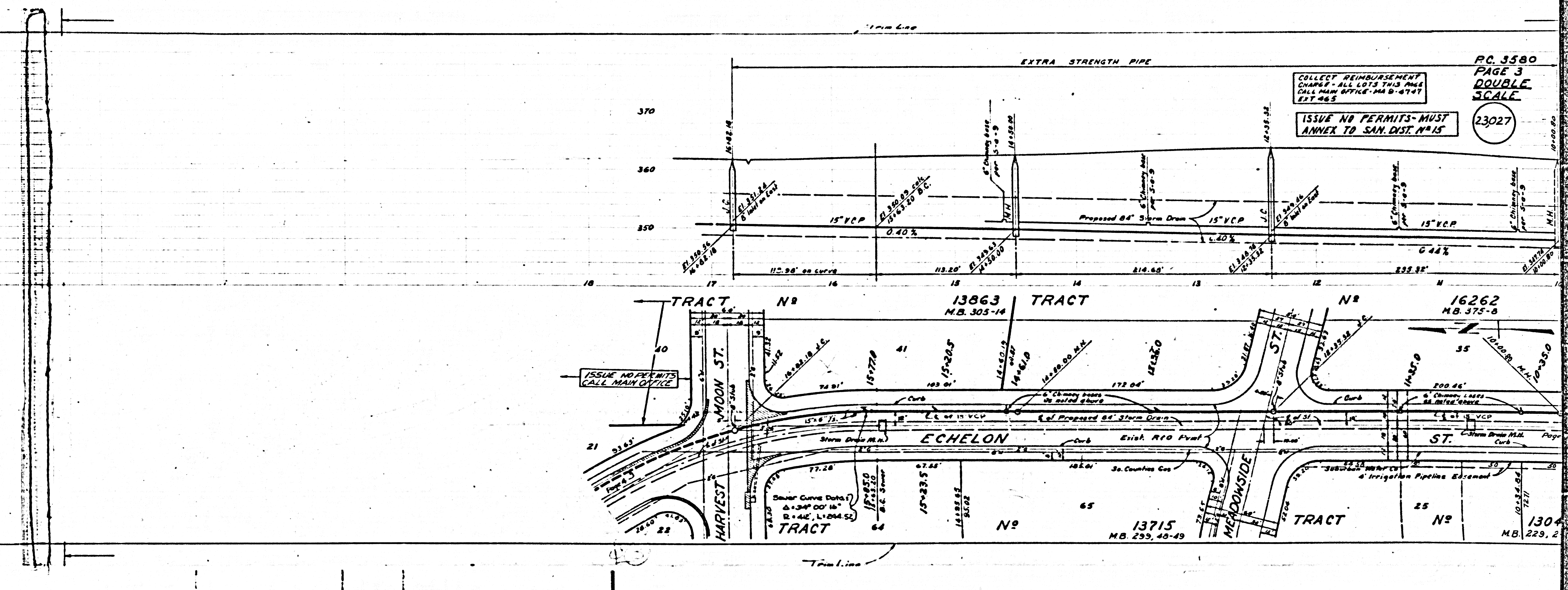
PC 3580
PAGE 2
DOUBLE
SCALE
23026

COLLECT REIMBURSEMENT CHARGE - ALL LOTS THIS PAGE - CALL MAIN OFFICE MA 9-4747, EXT 465

PC 3580 PAGE 4 DOUBLE SCALE 23028



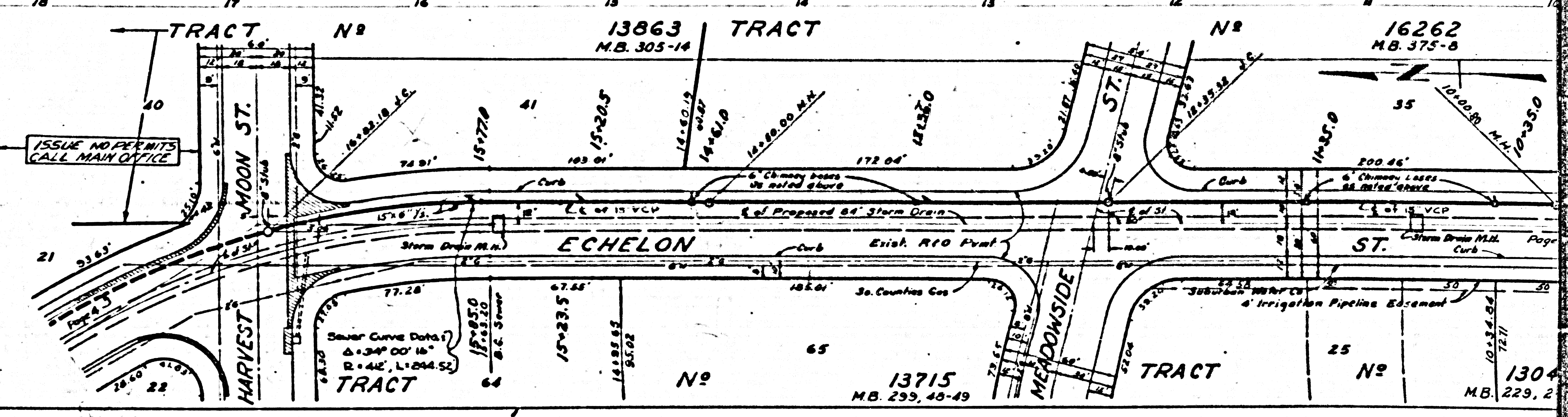
13715 M.B. 299, 40-49



COLLECT REIMBURSEMENT CHARGE - ALL LOTS THIS PAGE - CALL MAIN OFFICE MA 9-4747, EXT 465

PC 3580 PAGE 3 DOUBLE SCALE 23027

ISSUE NO PERMITS - MUST ANNEX TO SAN. DIST. N° 15



13715 M.B. 299, 40-49

1304 M.B. 229, 2

PC. 3580
PAGE 5
DOUBLE
SCALE
23,029

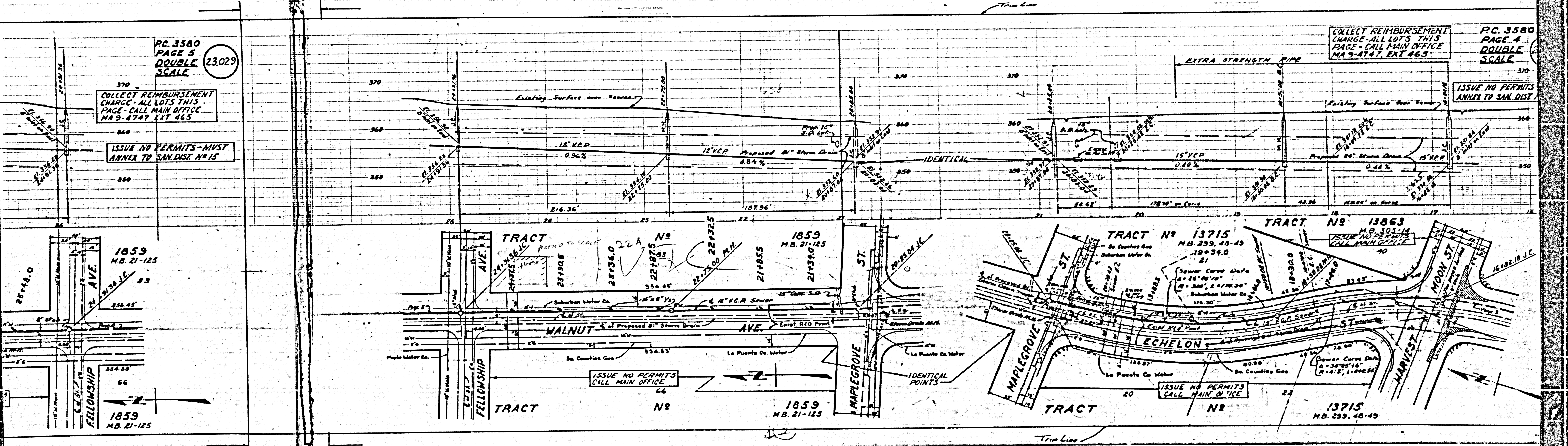
COLLECT REIMBURSEMENT
CHARGE - ALL LOTS THIS
PAGE - CALL MAIN OFFICE
MA 9-4747 EXT 465

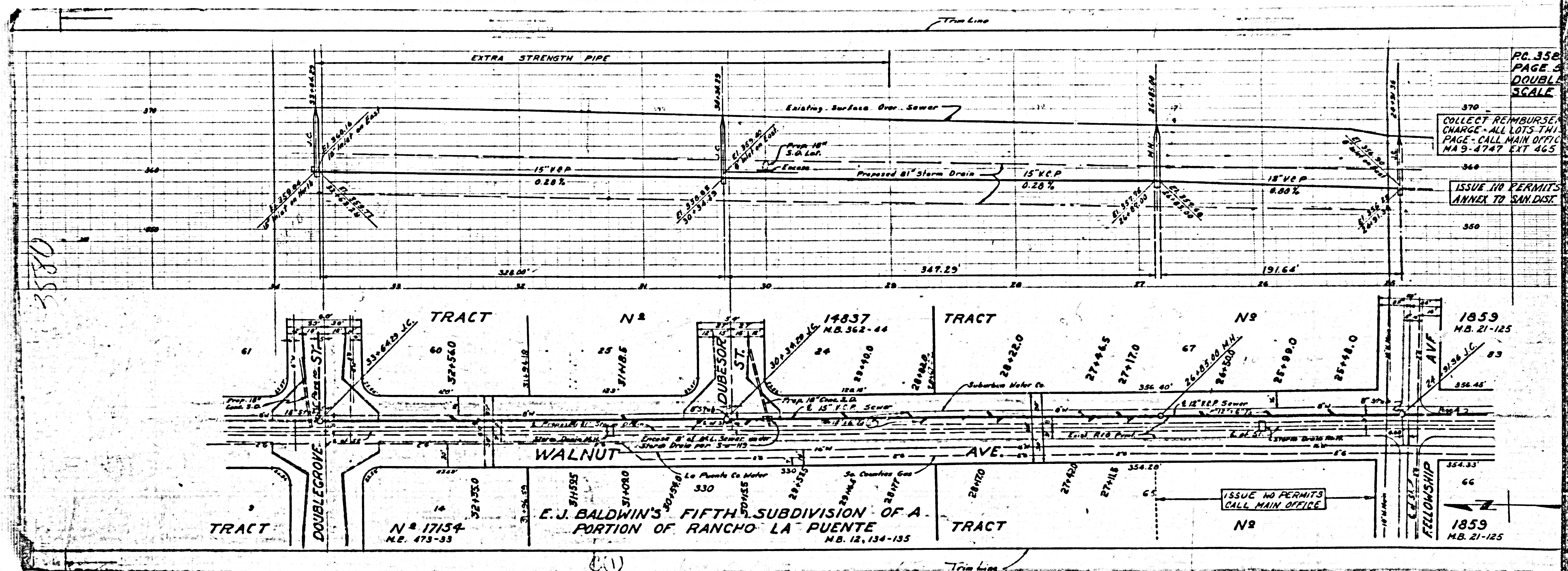
ISSUE NO PERMITS - MUST
ANNEX TO SAN. DIST. NO 15

COLLECT REIMBURSEMENT
CHARGE - ALL LOTS THIS
PAGE - CALL MAIN OFFICE
MA 9-4747 EXT 465

PC. 3580
PAGE 4
DOUBLE
SCALE

ISSUE NO PERMITS
ANNEX TO SAN. DIST.





3580

PC. 358
PAGE 2
DOUBLE
SCALE

COLLECT REIMBURSE
CHARGE - ALL LOTS THIS
PAGE - CALL MAIN OFFICE
NA 9-4747 EXT 465

ISSUE NO PERMITS
ANNEX TO SAN DIST.

ISSUE NO PERMITS
CALL MAIN OFFICE

E. J. BALDWIN'S FIFTH SUBDIVISION OF A
PORTION OF RANCHO LA PUENTE
M.B. 12, 134-135

N 17154
M.B. 473-33

1859
M.B. 21-125

1859
M.B. 21-125

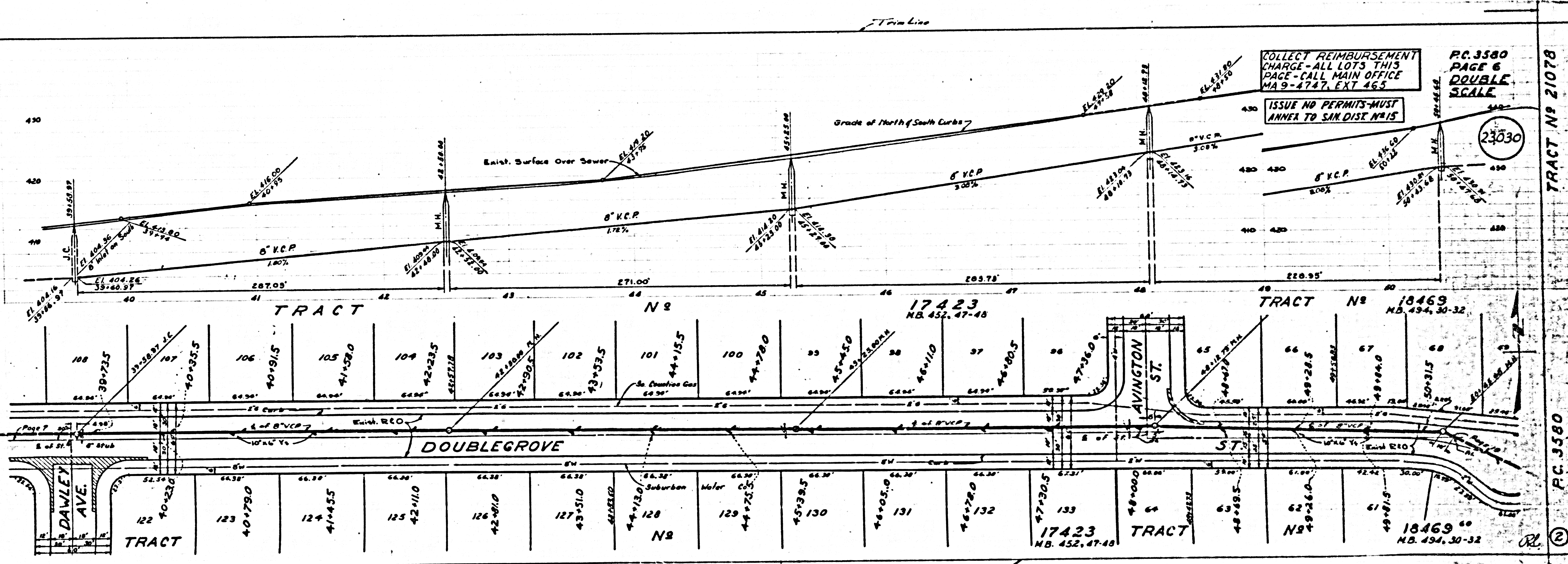
(1)

PC. 3580
PAGE 7
DOUBLE
SCALE

NO PERMITS-MUST
TO SAN DIST #15

23031

REIMBURSEMENT
ALL LOTS THIS
PAGE-CALL MAIN OFFICE
MA 9-4747, EXT 465



COLLECT REIMBURSEMENT
CHARGE-ALL LOTS THIS
PAGE-CALL MAIN OFFICE
MA 9-4747, EXT 465

ISSUE NO PERMITS-MUST
ANNEX TO SAN DIST #15

PC. 3580
PAGE 6
DOUBLE
SCALE

23030

TRACT # 21078

PC. 3580
PAGE 6
DOUBLE
SCALE

TRACT # 21078

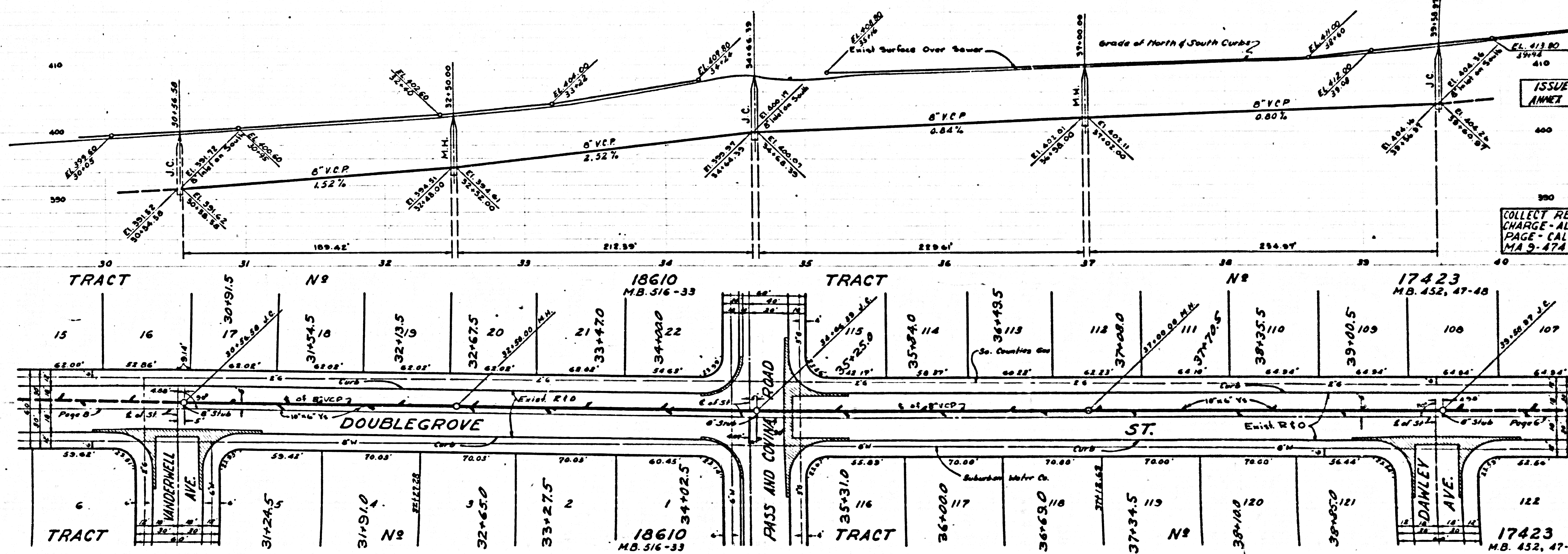
PC. 3580
PAGE 8
DOUBLE
SCALE

ISSUE NO PERMITS-MUST
ANNEX TO SAN. DIST. NO. 15

23032

ALLEY REIMBURSEMENT
CHARGE - ALL LOTS THIS
PAGE - CALL MAIN OFFICE
MA 9-4747, EXT 465

18610
M.B. 516-33



PC. 3580
PAGE 7
DOUBLE
SCALE

ISSUE NO PERMITS-MUST
ANNEX TO SAN. DIST. NO. 15

23031

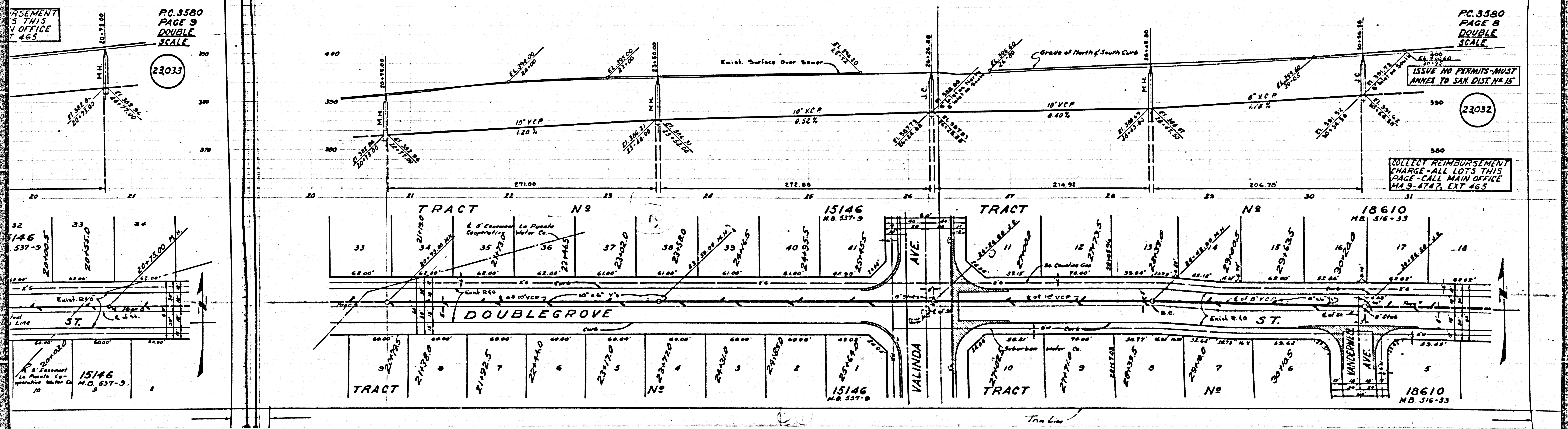
COLLECT REIMBURSEMENT
CHARGE - ALL LOTS THIS
PAGE - CALL MAIN OFFICE
MA 9-4747, EXT 465

17423
M.B. 452, 47-48

PERMITS
IN THIS
OFFICE
465

PC. 3580
PAGE 9
DOUBLE
SCALE

23033

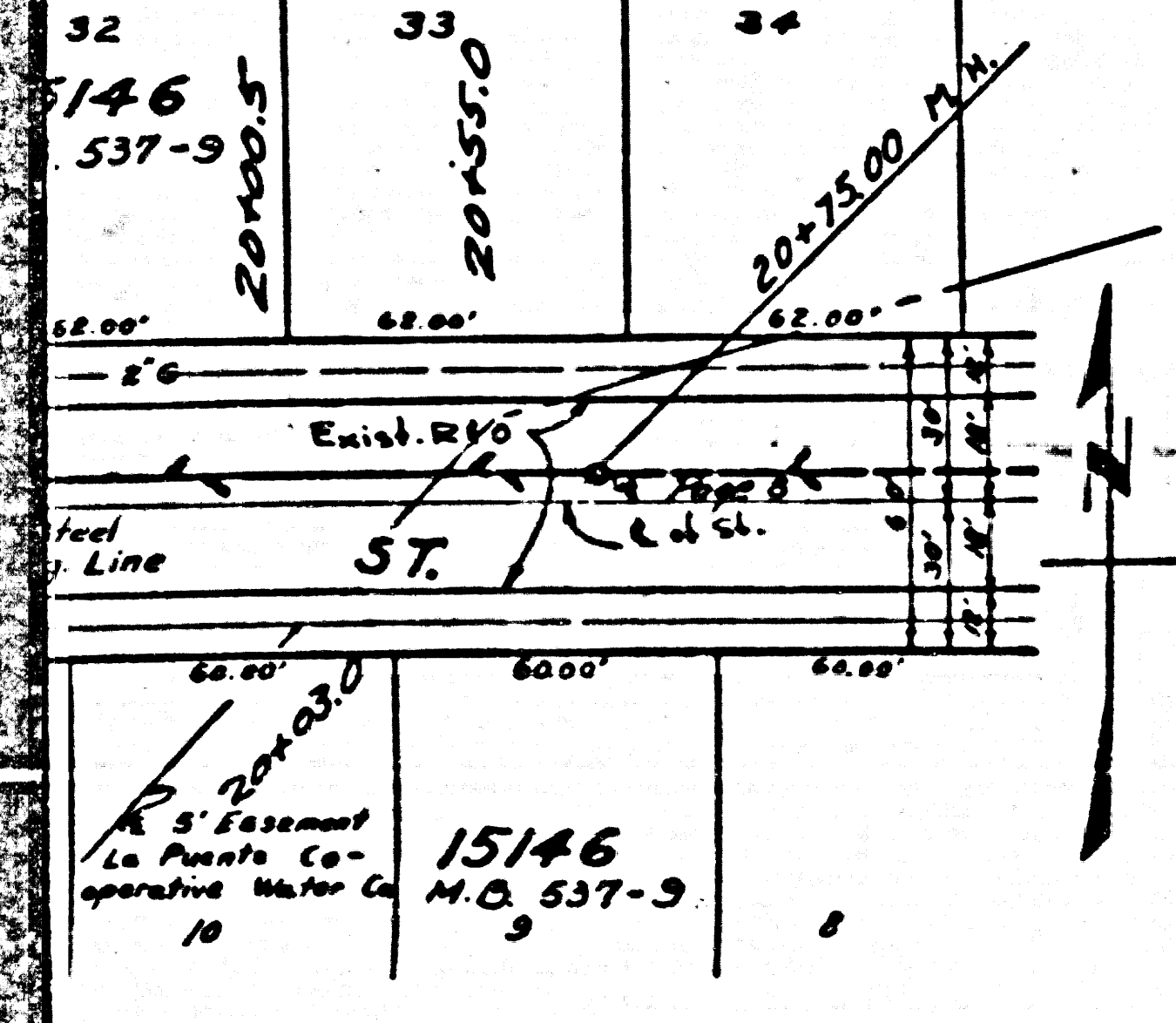


PC. 3580
PAGE 8
DOUBLE
SCALE

23032

ISSUE NO PERMITS-MUST
ANNEX TO SAN. DIST. NO 15

COLLECT REIMBURSEMENT
CHARGE-ALL LOTS THIS
PAGE-CALL MAIN OFFICE
MA 9-4747, EXT 465



15146
M.B. 537-9

18610
M.B. 516-33

COLLECT REIMBURSEMENT
CHARGE - ALL LOTS THIS
PAGE - CALL MAIN OFFICE
MA-9-4747, EXT 465

P.C. 3580
PAGE 10
DOUBLE
SCALE

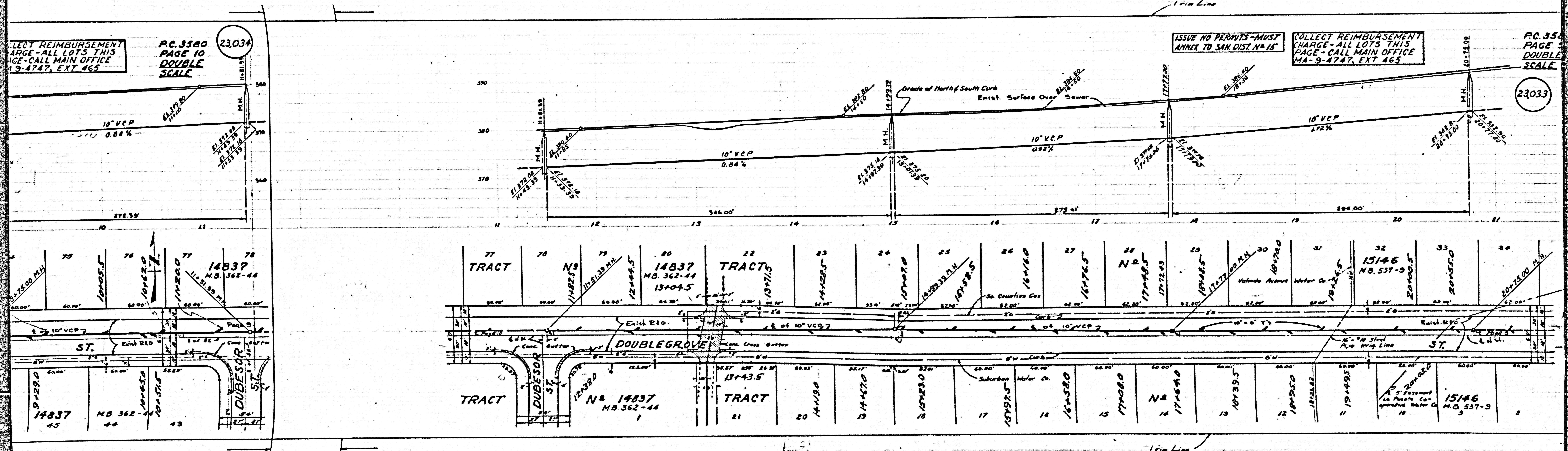
23034

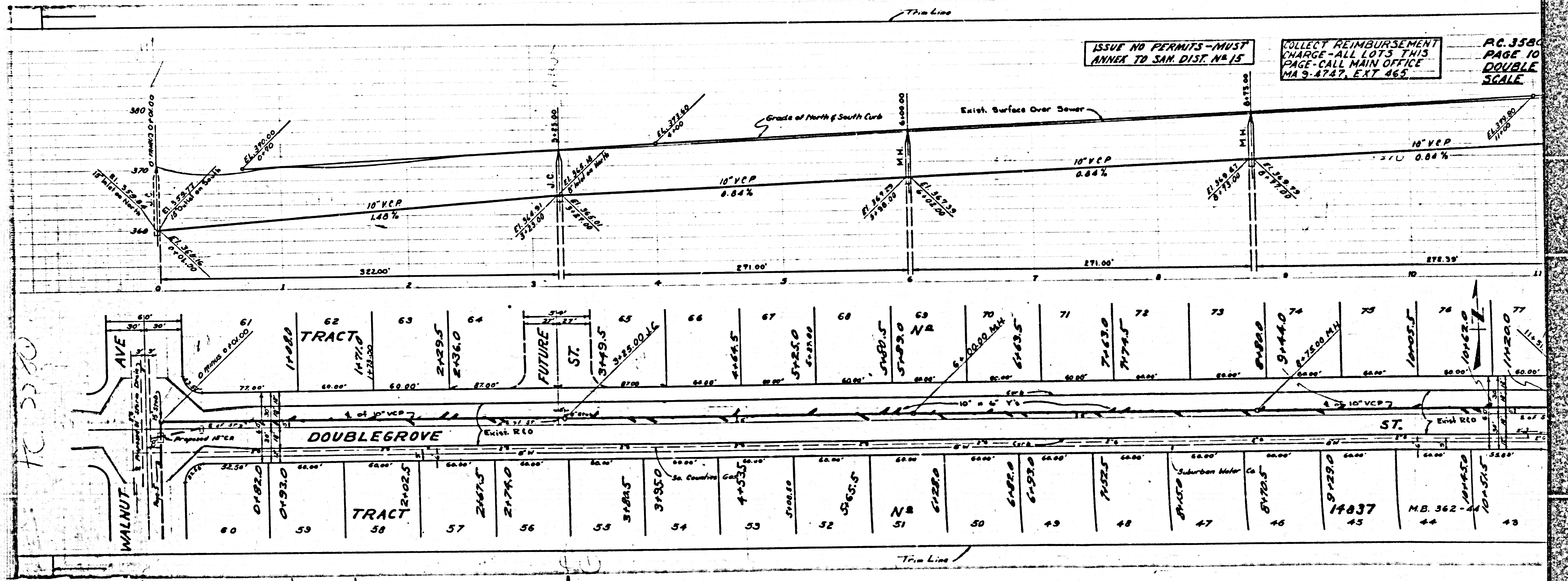
ISSUE NO PERMITS - MUST
ANNEX TO SAN. DIST. NO. 15

COLLECT REIMBURSEMENT
CHARGE - ALL LOTS THIS
PAGE - CALL MAIN OFFICE
MA-9-4747, EXT 465

P.C. 35
PAGE
DOUBLE
SCALE

23033





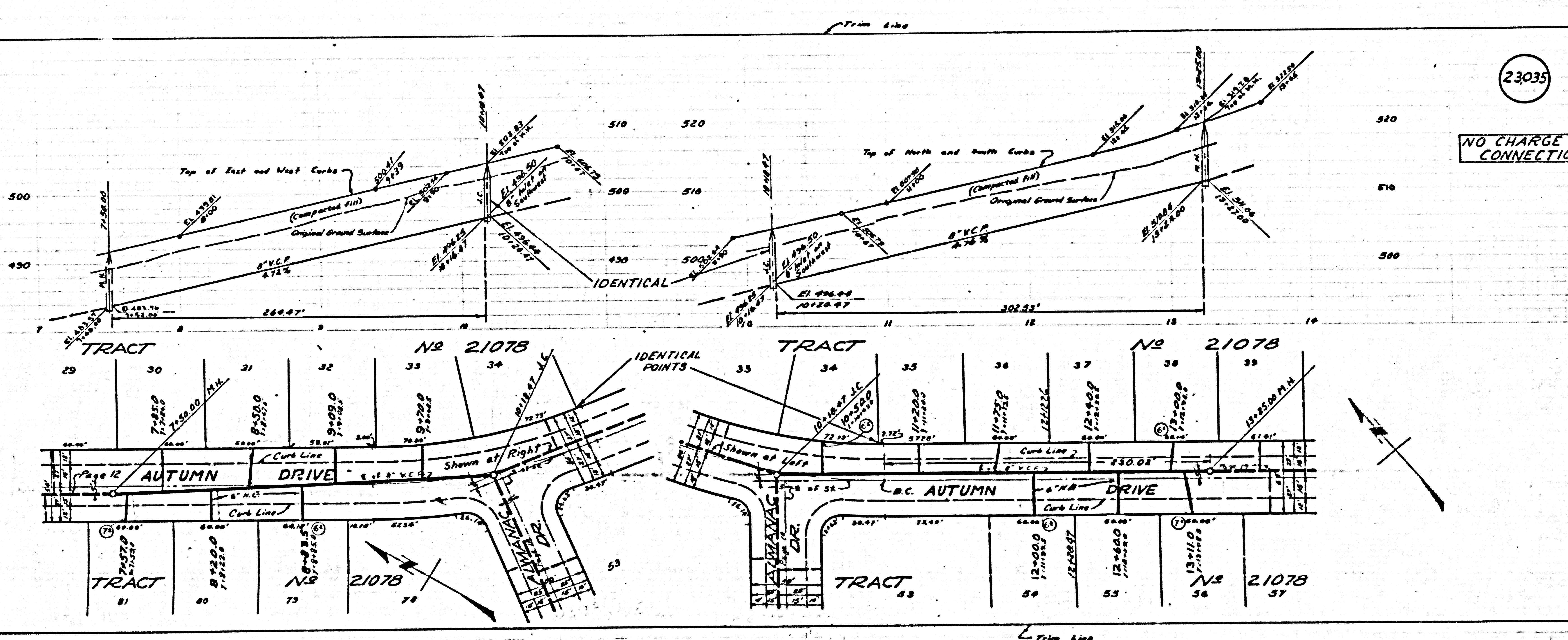
ISSUE NO PERMITS - MUST
ANNEX TO SAN. DIST. NO 15

COLLECT REIMBURSEMENT
CHARGE - ALL LOTS THIS
PAGE - CALL MAIN OFFICE
MA 9-8747, EXT 465

PC 3580
PAGE 10
DOUBLE
SCALE

PC 3580

60	59	58	57	56	55	54	53	52	51	50	49	48	47	46	45	44	43
1182.0	1471.0	2429.5	2436.0	349.5	349.5	454.5	525.0	525.0	549.5	549.5	612.0	612.0	712.5	812.0	944.0	1005.5	1012.0
14880	14710	24295	24360	3495	3495	4545	5250	5250	5495	5495	6120	6120	7125	8120	9440	10055	10120
14880	14710	24295	24360	3495	3495	4545	5250	5250	5495	5495	6120	6120	7125	8120	9440	10055	10120

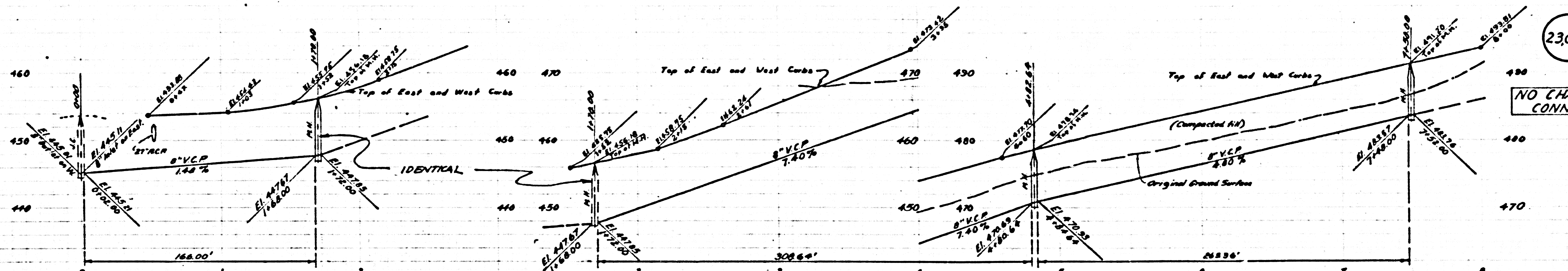


23035
 NO CHARGE FOR CONNECTIONS

PC 3580
 PAGE 11
 DOUBLE
 SCALE

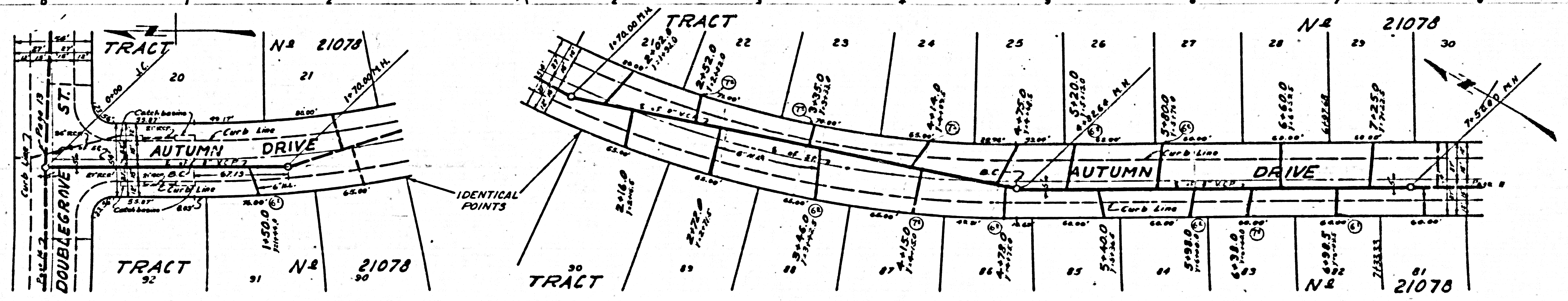
TRACT N 21078
 PC 3580
 0822.29
 1.15 E. 1/2

RL (C)



PC 3580
PAGE 12
DOUBLE
SCALE

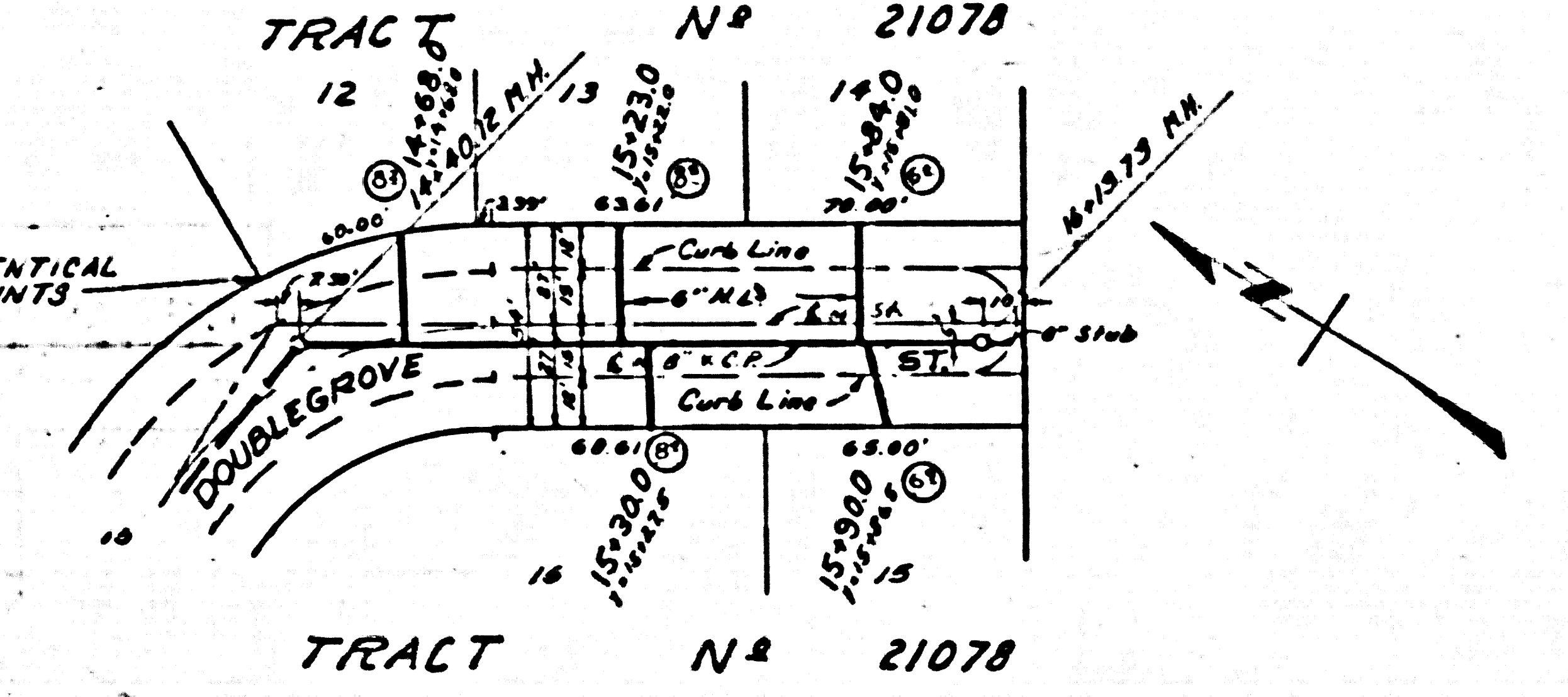
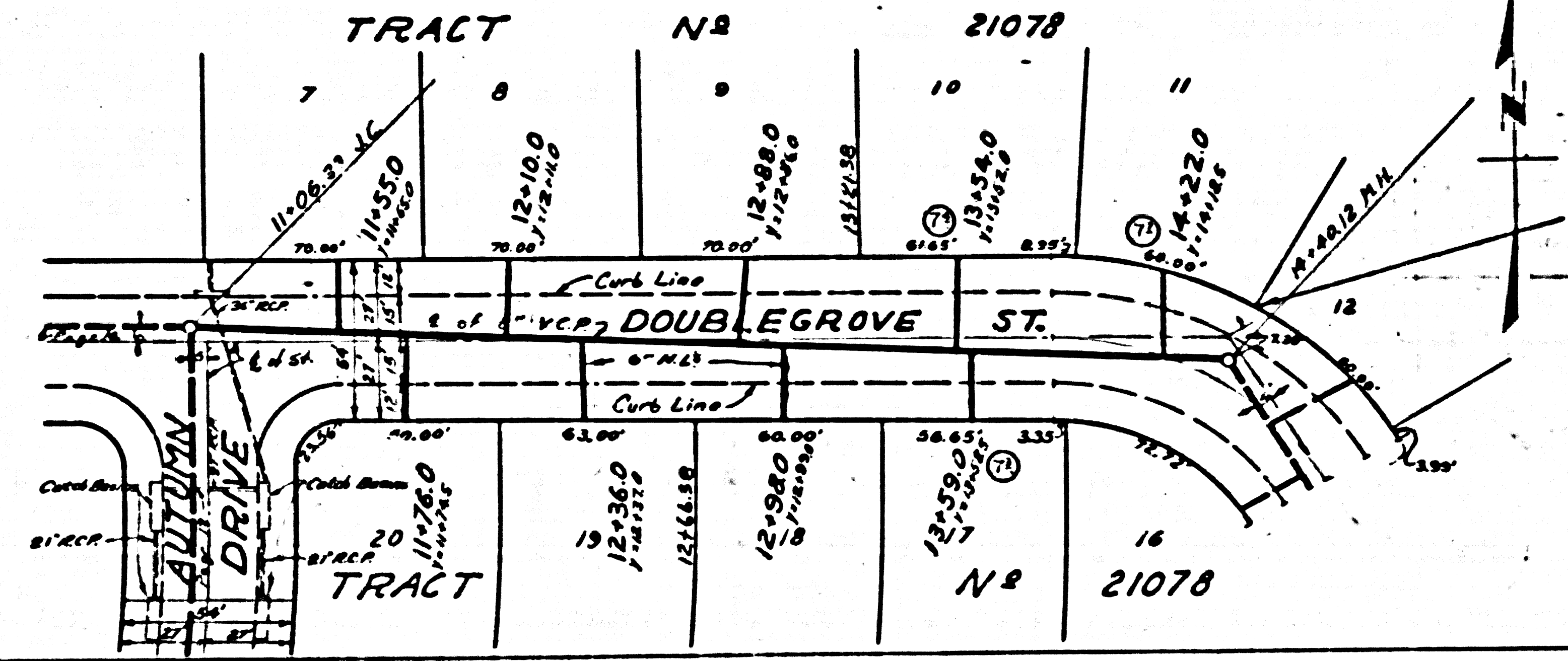
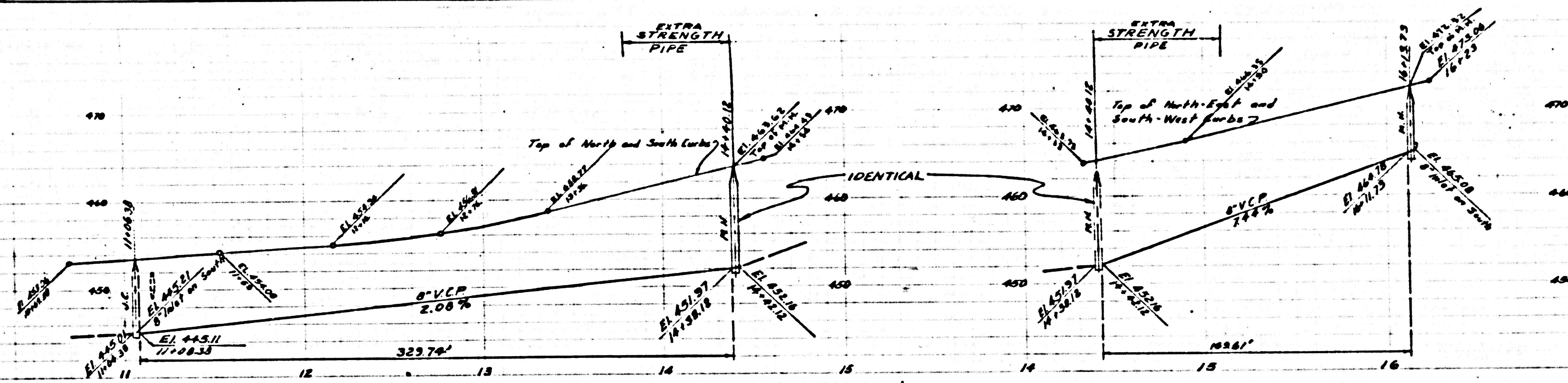
23036
NO CHARGE FOR CONNECTIONS



PC 3580
PAGE 14
DOUBLE
SCALE

23038

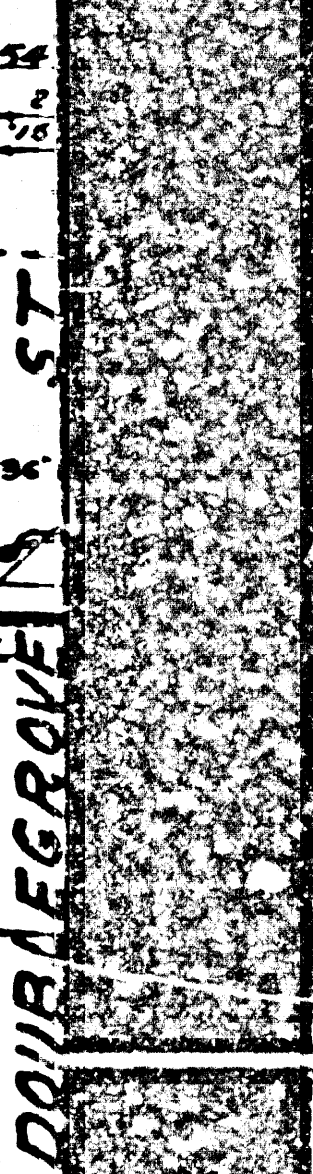
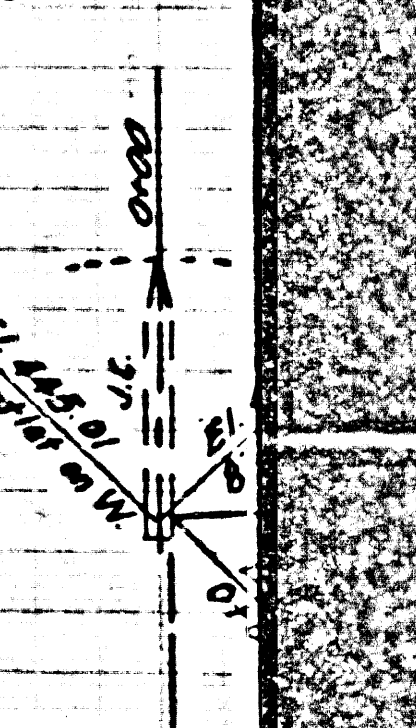
COLLECT CHARGES
AS INDICATED



23037

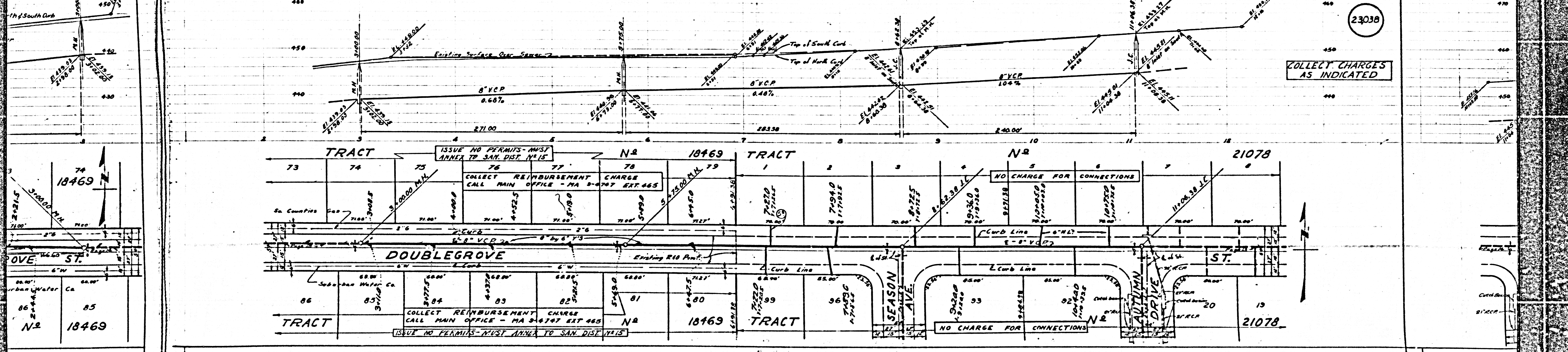
PC 3580
PAGE 13
DOUBLE
SCALE

NO CHARGE FOR
CONNECTIONS



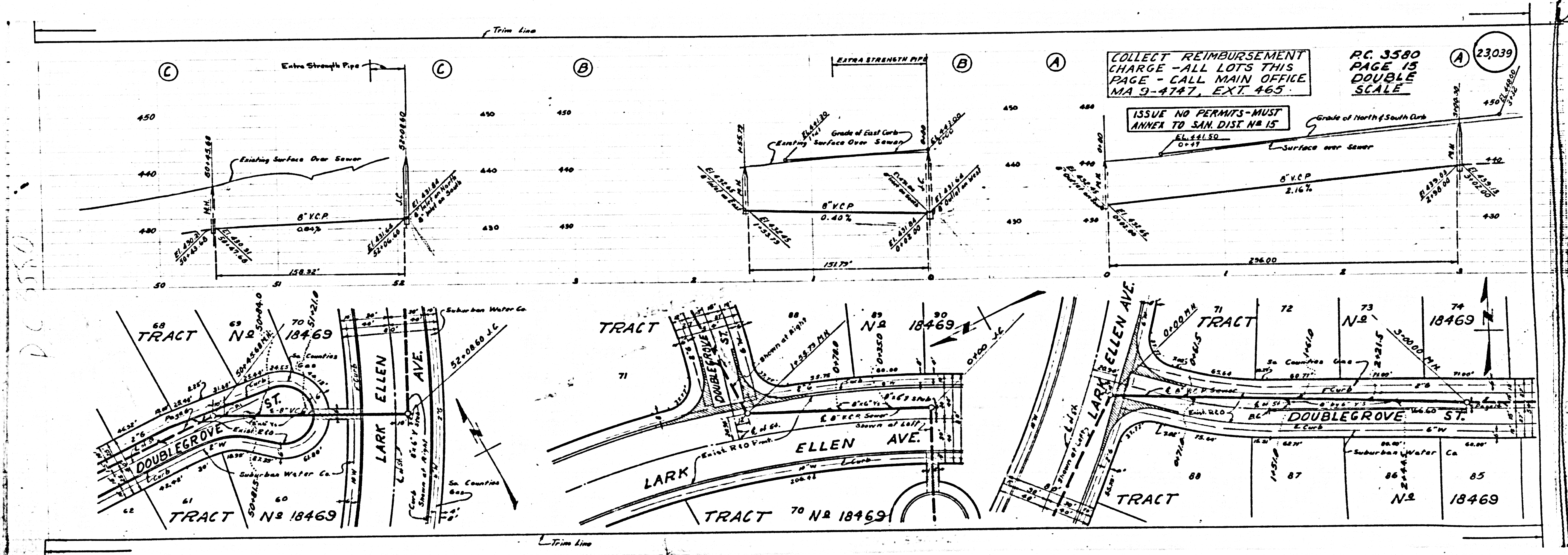
PC 3580
PAGE 15
DOUBLE
SCALE

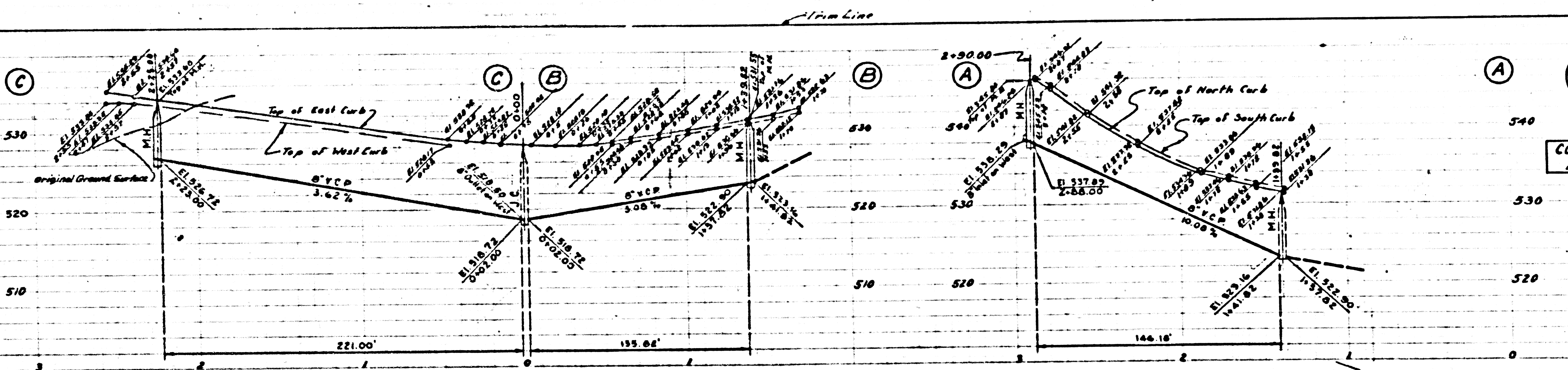
PC 3580
PAGE 14
DOUBLE
SCALE



N# 18469

N# 21078

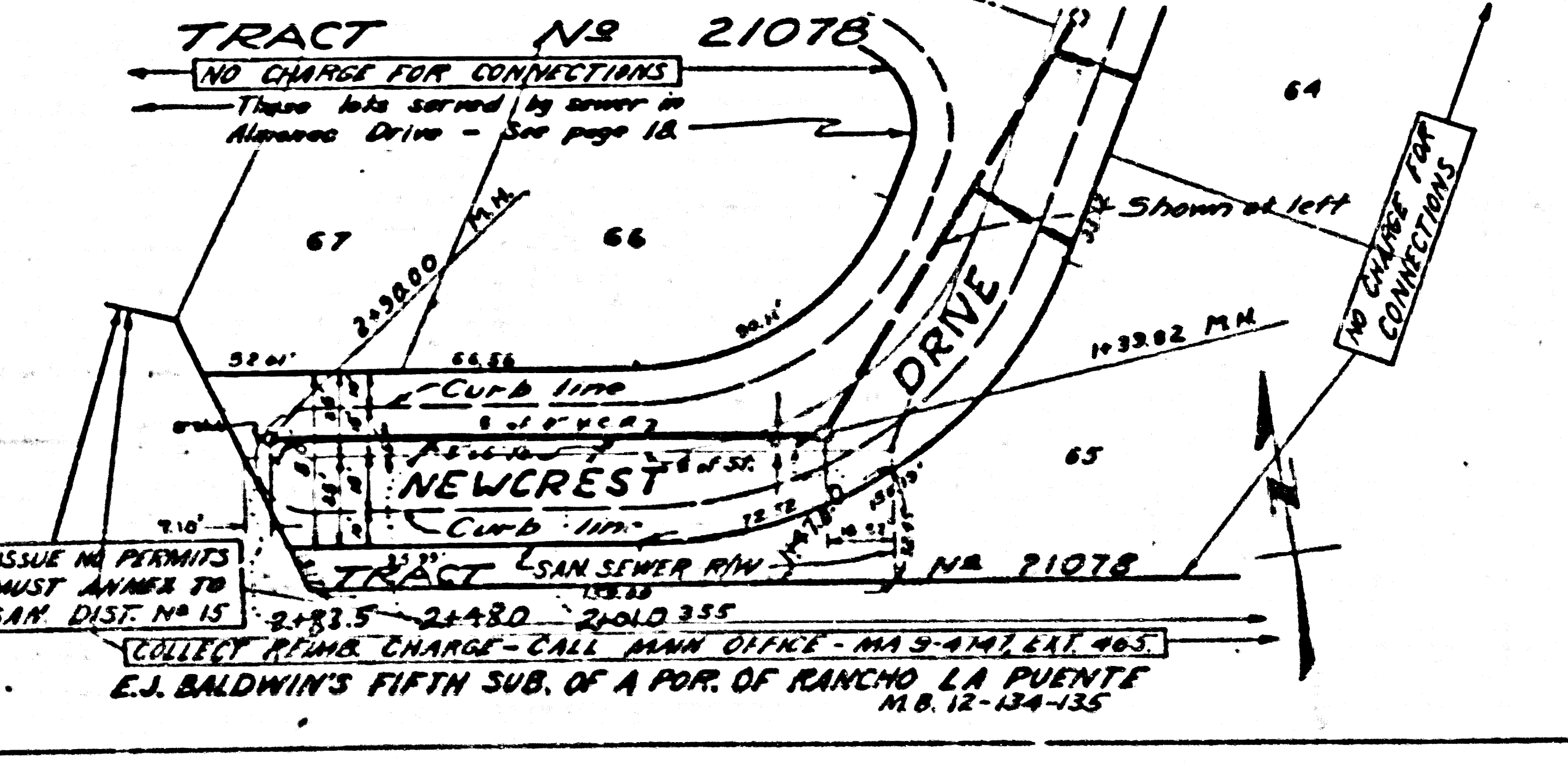
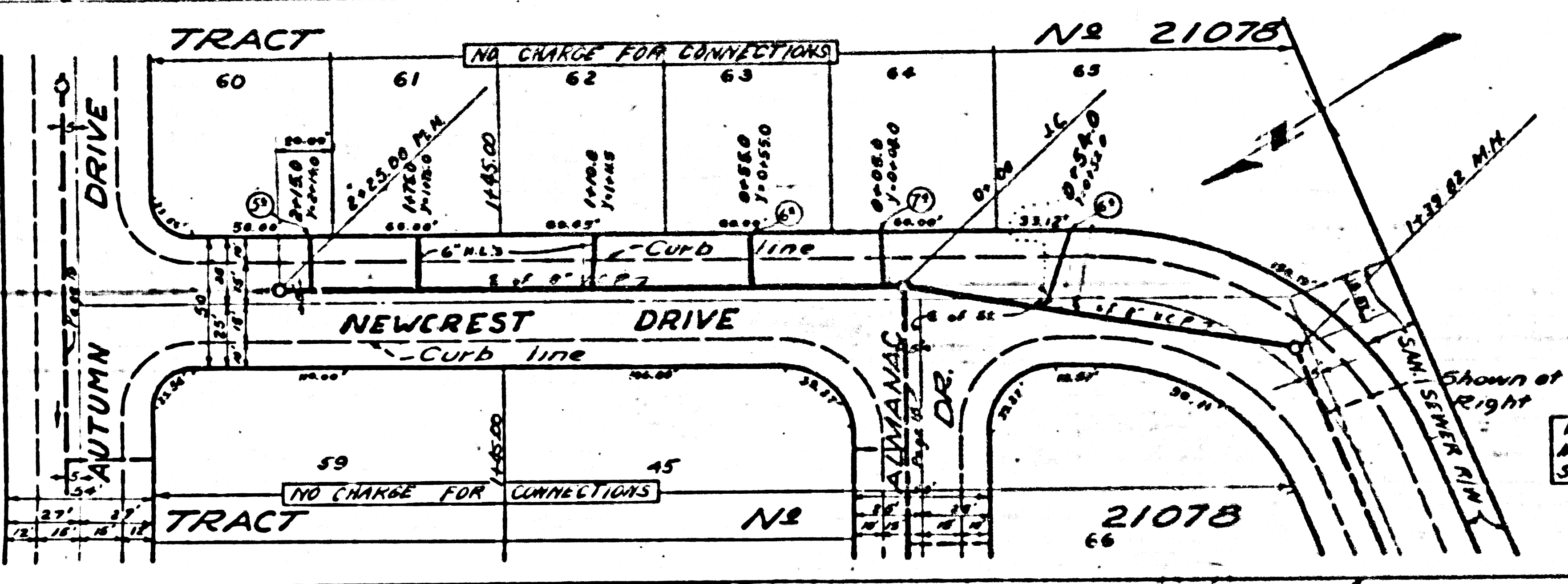


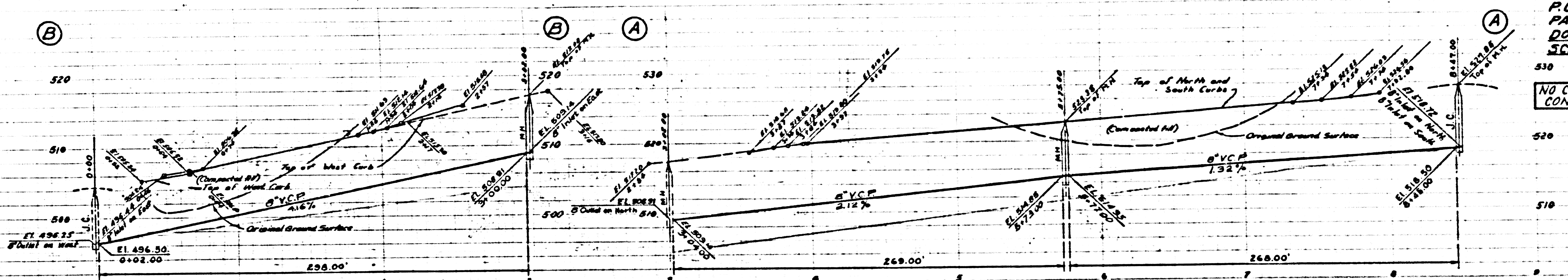


P.C. 3580
PAGE 17
DOUBLE
SCALE

23041

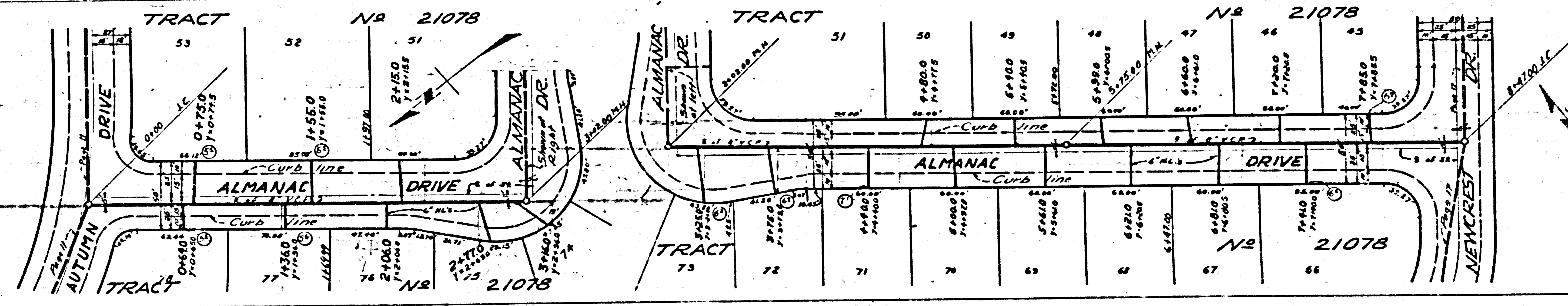
COLLECT CHARGES
AS INDICATED



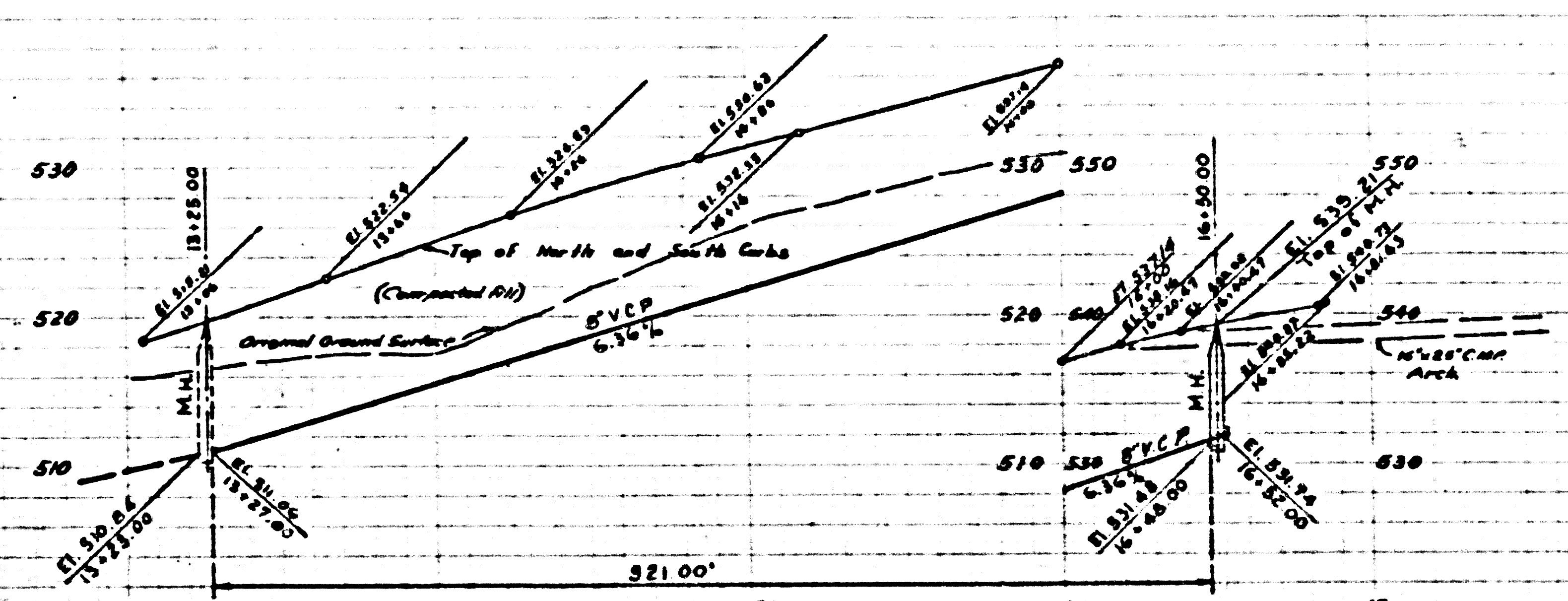


P.C. 3580
 PAGE 18
 DOUBLE
 SCALE
 23042

NO CHARGE FOR CONNECTIONS

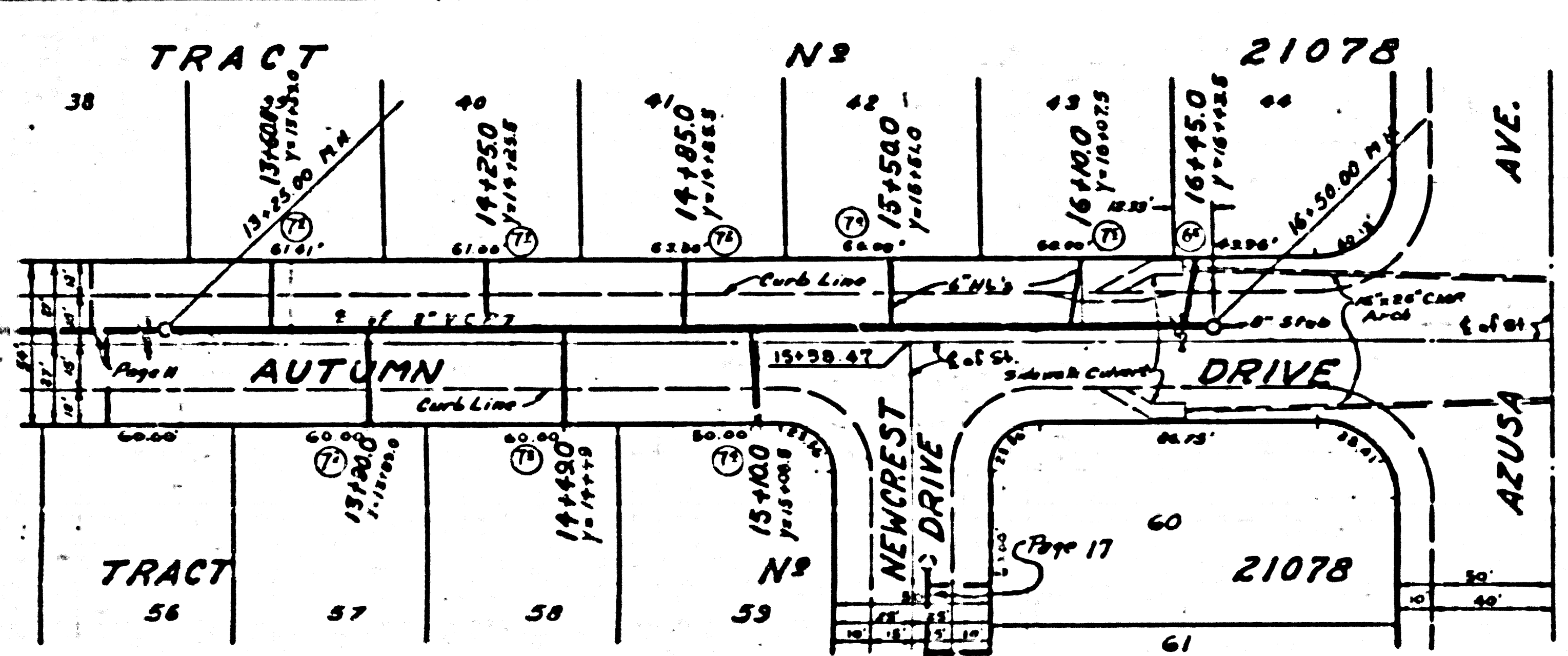


PC 3580



PC 3580
PAGE 13
DOUBLE
SCALE

NO CHARGE FOR CONNECTIONS



Top Line