

21,448
 21,448
 21,448

Trim Line

PUENTE BLDG. DIST. N^o 2

- NOTE:**
 Provide stakes on the property lines or property lines produced at right angles to the sewer line at the center line of each manhole.
 No representative of the County Engineer will survey or layout any portion of the work.
 The contractor or his authorized representative shall furnish the County Engineer with grade sheets and stations for all house laterals and Y branches and shall provide stakes for them at their proper locations with sufficient plainly marked. Any change in location shall be requested in writing by the owner or his representative.
 No revisions shall be made in these plans without the approval of the County Engineer.
1. Use standard manhole frames and covers, S-a-117.
 2. Use standard strength pipe except as noted.
 3. Use cement mortar for all vitrified clay pipe joints.
 4. Resurface all trench within paved area to meet L.A. County Road Dept or California State Highway Dept. requirements in accordance with permit.
 5. Excise four feet of sewer at points of interference with poles, S-a-119.
 6. House laterals to be constructed with inverts at property line feet below curb grade except as noted.
 7. All structures shall be brick sewer structures, S-a-104.
 8. For allowable leakage test, use Formula No. 1, Spec's. Sec. 51.
 9. Manhole tops in unimproved Right-of-Way to be 6" above finish grade.

SHEETS	PAGES
1	1-3

NO CHARGE FOR CONNECTIONS

R.B. Huber 7-18-55

Checked 9-27-55 W. L. Linn

Trim Line

P.C. 8582
 PAGE 1

PROFILE, ALIGNMENT AND GRADE OF
 SANITARY SEWERS
 TO BE CONSTRUCTED IN

TRACT N^o 16902

PRIVATE CONTRACT NO. 3532
 W. S. 38
 ONE SHEET

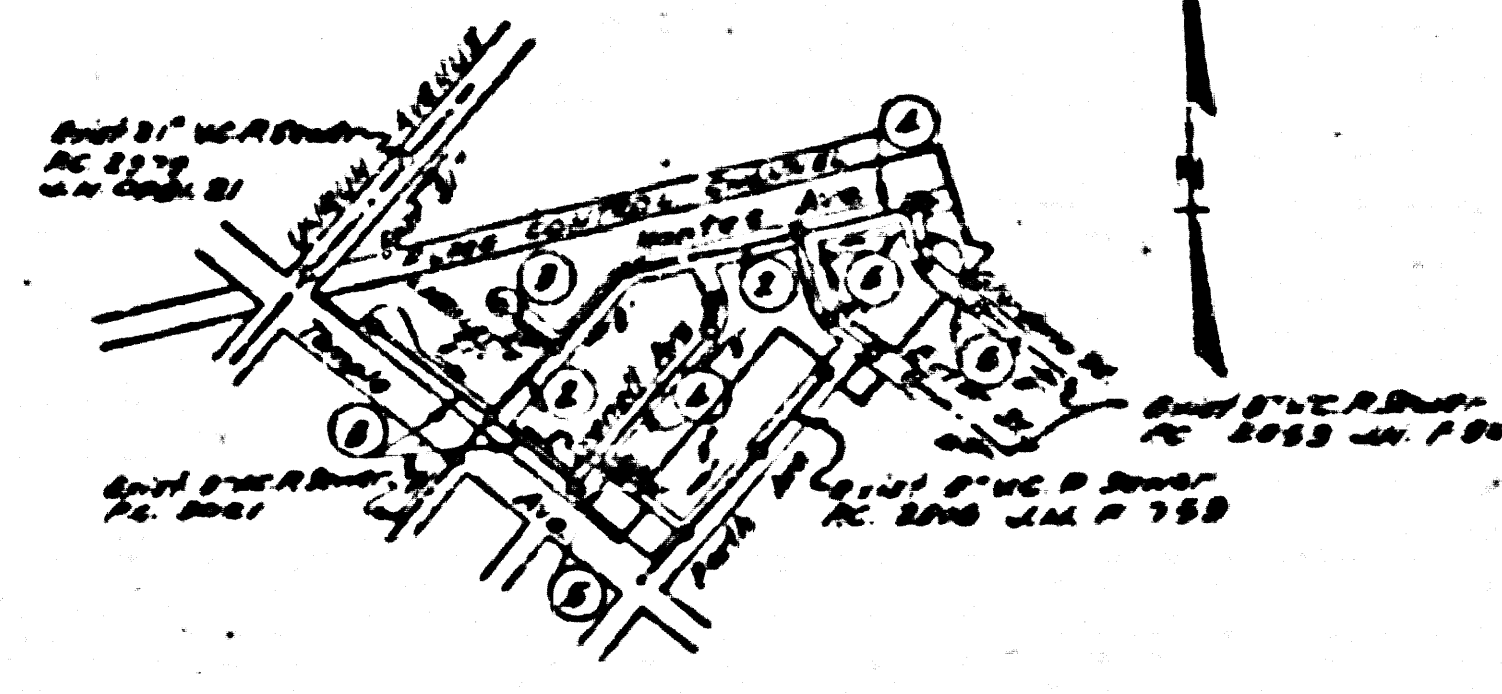
21,447

APRIL 1955
 PREPARED IN THE OFFICE OF
SECURITY ENGINEERING CO.

Robert H. Sebring
 C.E.C. No. 2108

FOR LEGEND SEE PLAN NO. S-a-64

NOTE:
 Grades to which this improvement is to be constructed are shown on plans and profiles. Grade points for top of curbs, center line of streets, or center line of alleys are shown by circles on profiles. At all points between designated points the grade shall be established so as to conform to a straight line drawn between said designated points.
 Elevations are in feet above U.S.C.S. datum or mean sea level.
 This drawing and the data hereon are hereby made a part of the specifications.
 Work shall be constructed according to specifications on file in the office of the County Engineer and shall be prosecuted only in the presence of the County Engineer.
 Before work can be started, the contractor must obtain a permit to excavate in County streets from the L.A. County Road Dept. 108 W 2nd St and make a deposit with the County Engineer, 250 South Broadway, Room 824, sufficient to cover the cost of construction inspection and record plans.
 Approval of this plan by the County of Los Angeles does not constitute a representation as to the accuracy of the location of or the existence or non-existence of any underground utility, pipe, or structure within the limits of this project. This note applies to all sheets.
 If work is to be done in a State Highway, a permit must be obtained from the State of California, Division of Highways, 122 South Spring Street.



INDEX MAP
TRACT N^o 16902
 SCALE 1" = 600'

COUNTY OF LOS ANGELES, CALIFORNIA

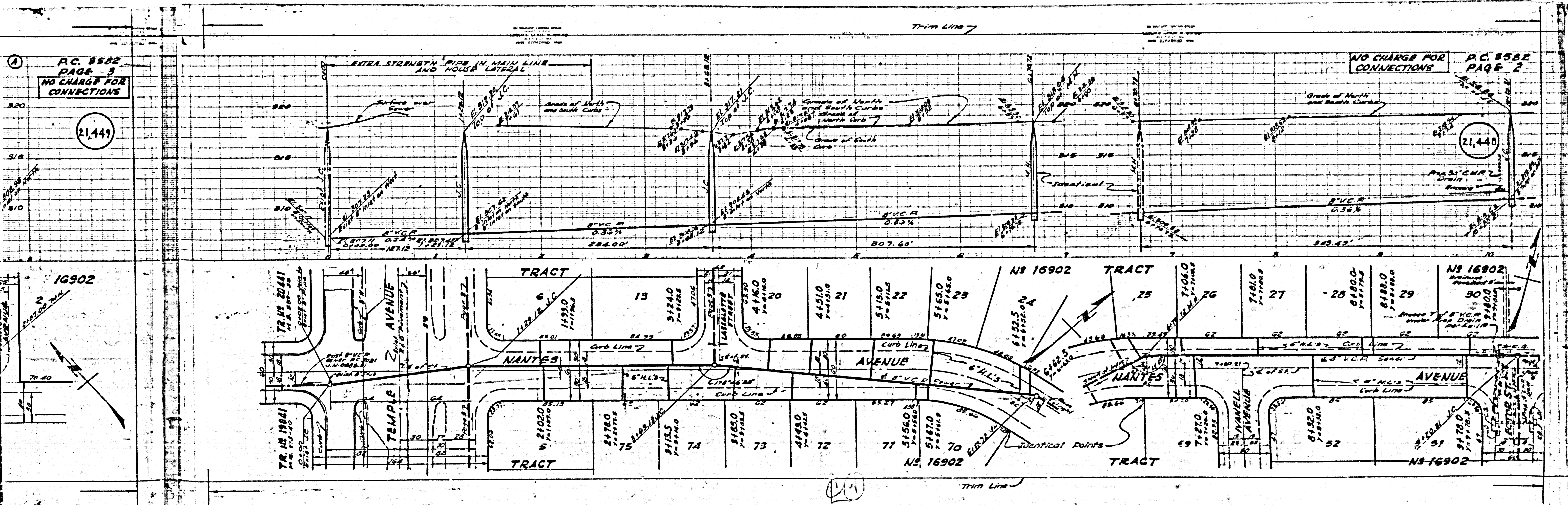
Approved, William J. Fox, County Engineer Approved, A. M. Rasmussen, City Engineer

A.P. Collins Chief Engineer
R.B. Huber 7-18-55
 Office of County Engineer, P.O. Box 7860

P.C. 8582

TRACT N^o 16902

ONE SHEET



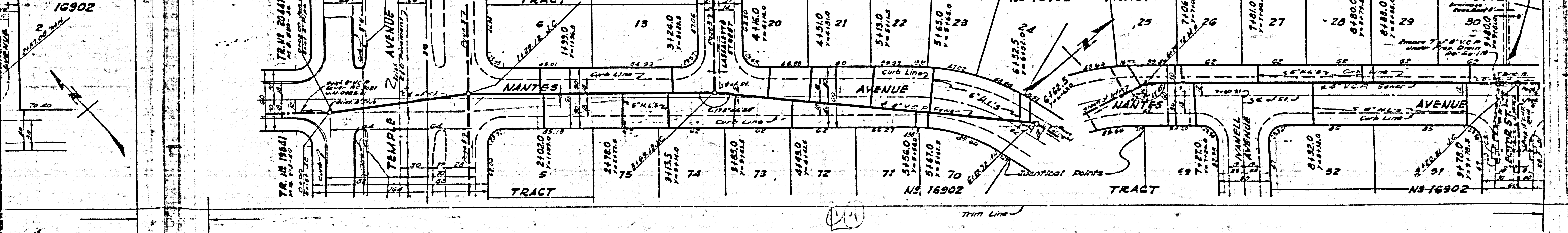
P.C. 8582
PAGE 3
NO CHARGE FOR CONNECTIONS

P.C. 8582
PAGE 2
NO CHARGE FOR CONNECTIONS

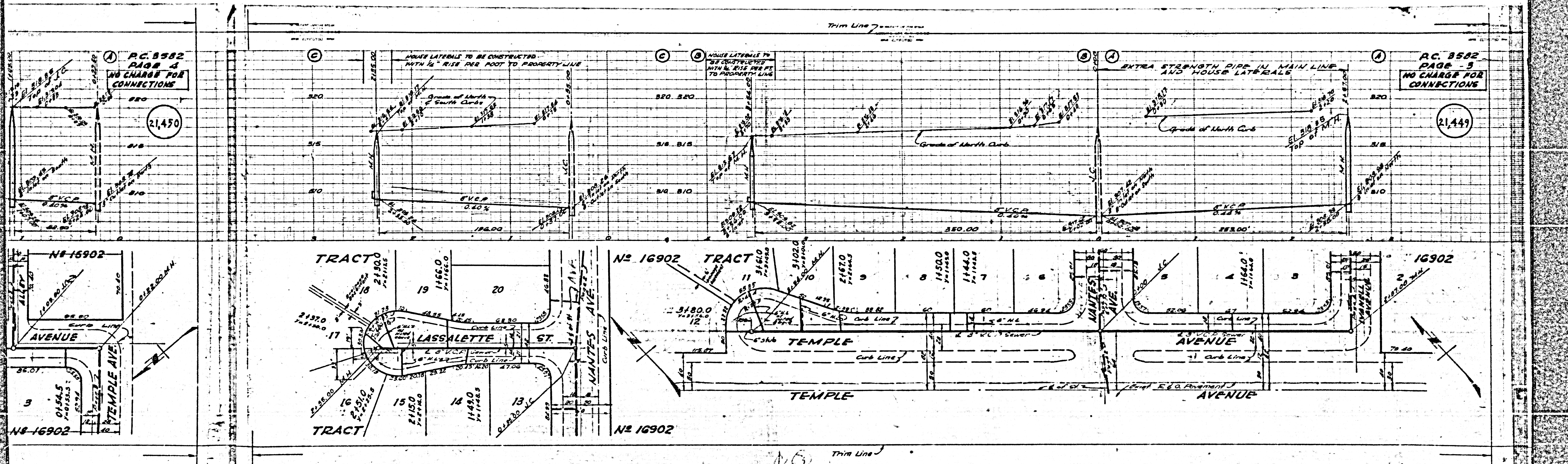
(21,449)

(21,448)

16902



(21)

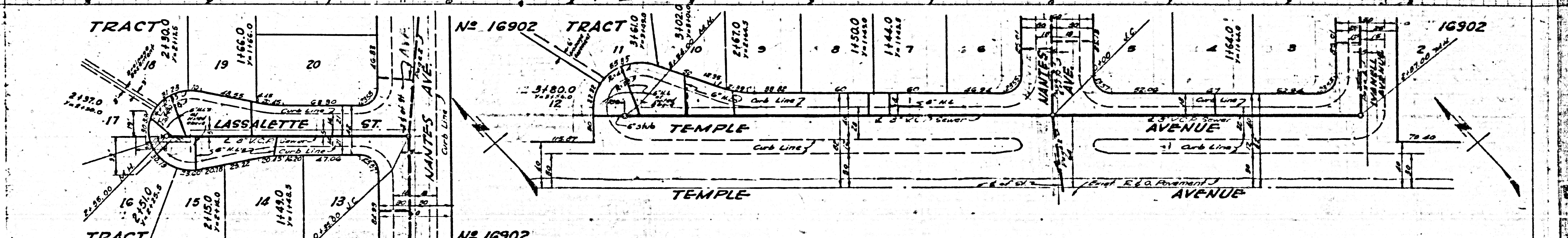
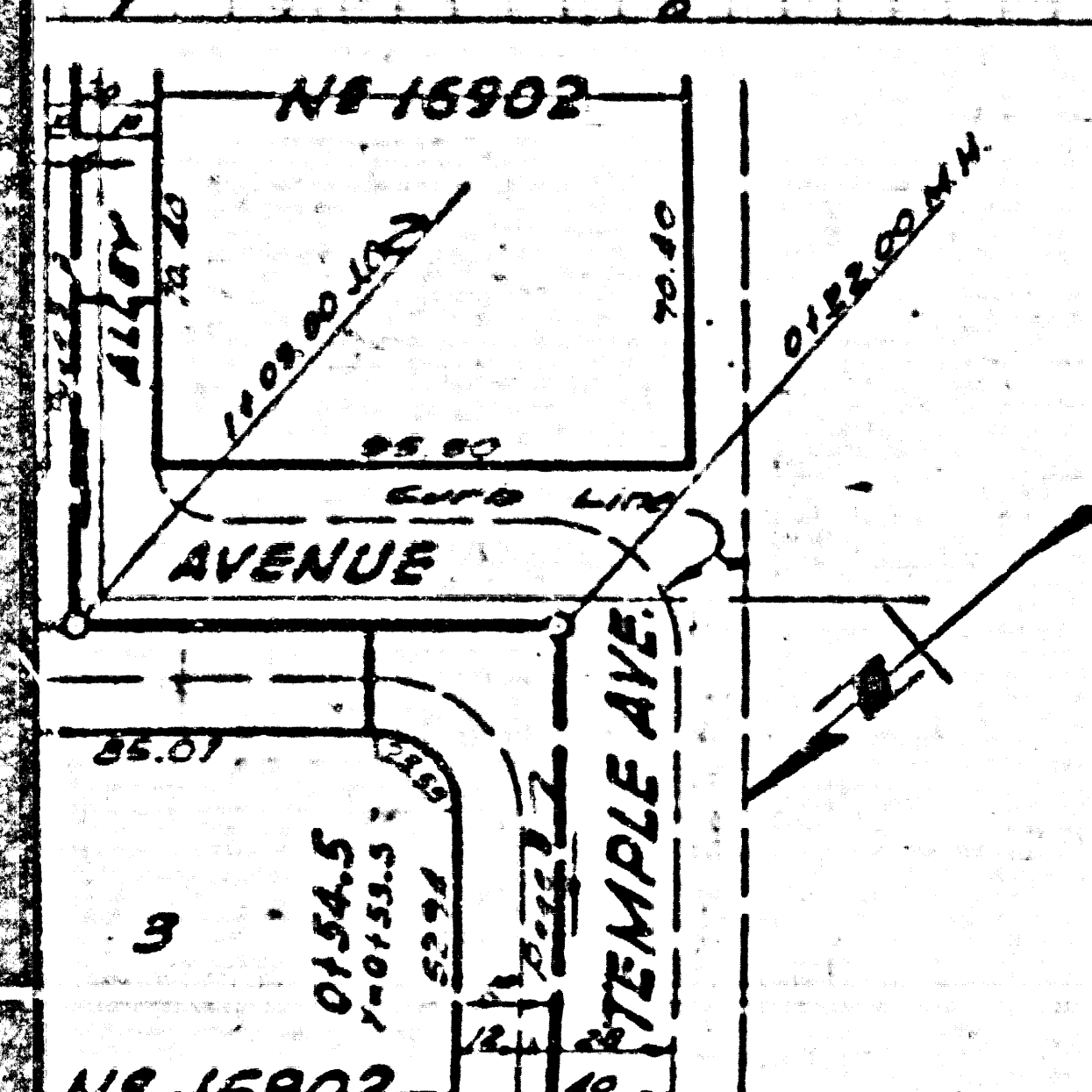


PC 8582
PAGE 4
NO CHARGE FOR
CONNECTIONS

PC 8582
PAGE 5
NO CHARGE FOR
CONNECTIONS

21,450

21,449



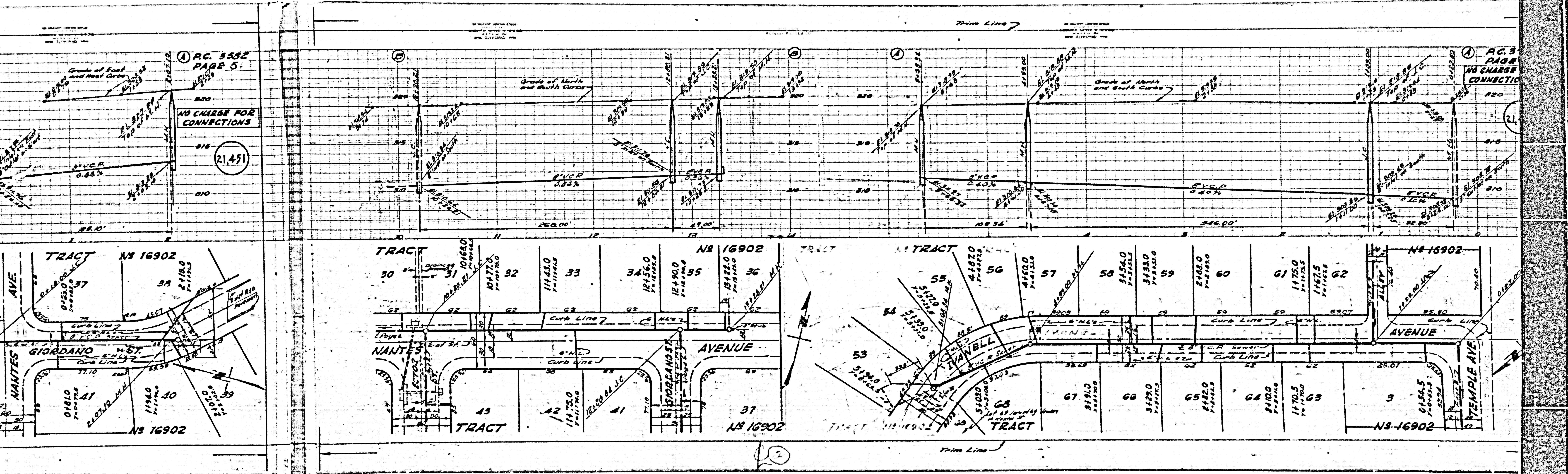
45 Trim Line

PC. 3582
PAGE 5

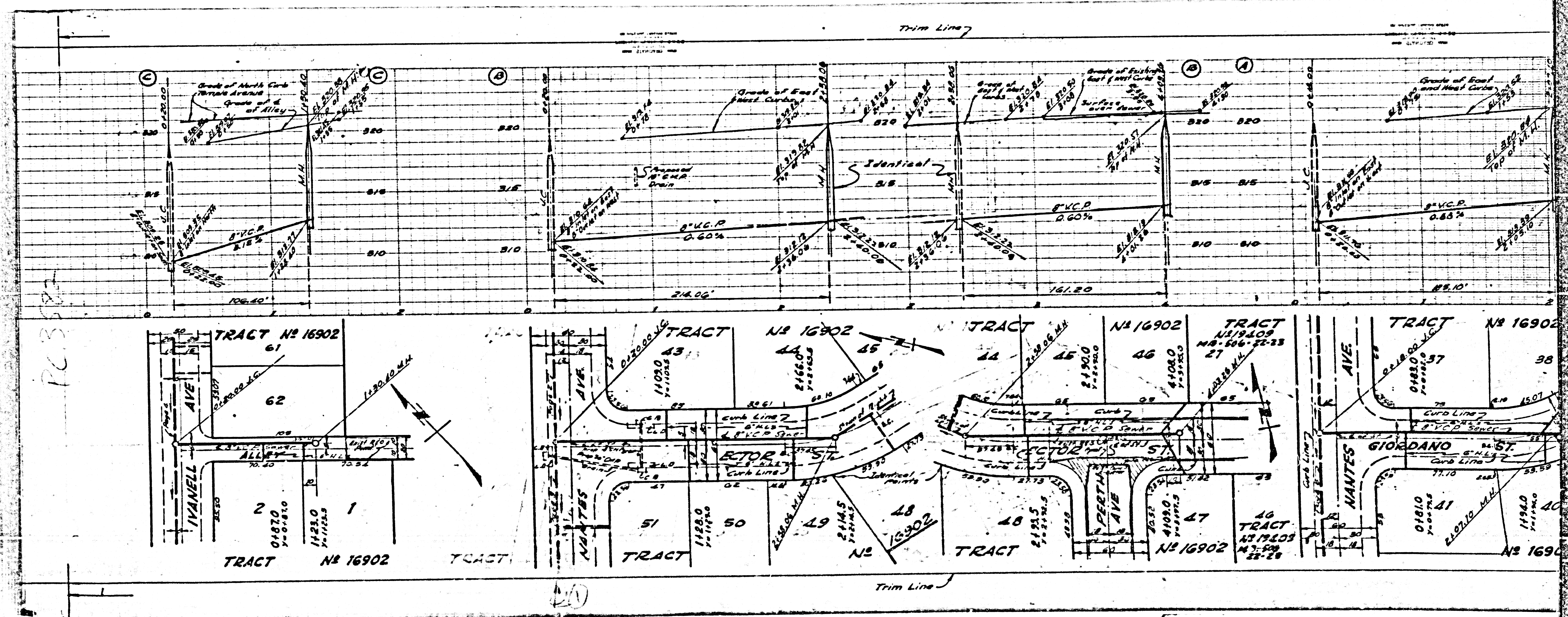
NO CHARGE FOR
CONNECTIONS

21,451

PC. 3
PAGE
NO CHARGE
CONNECTIO



21



PC 3382

20