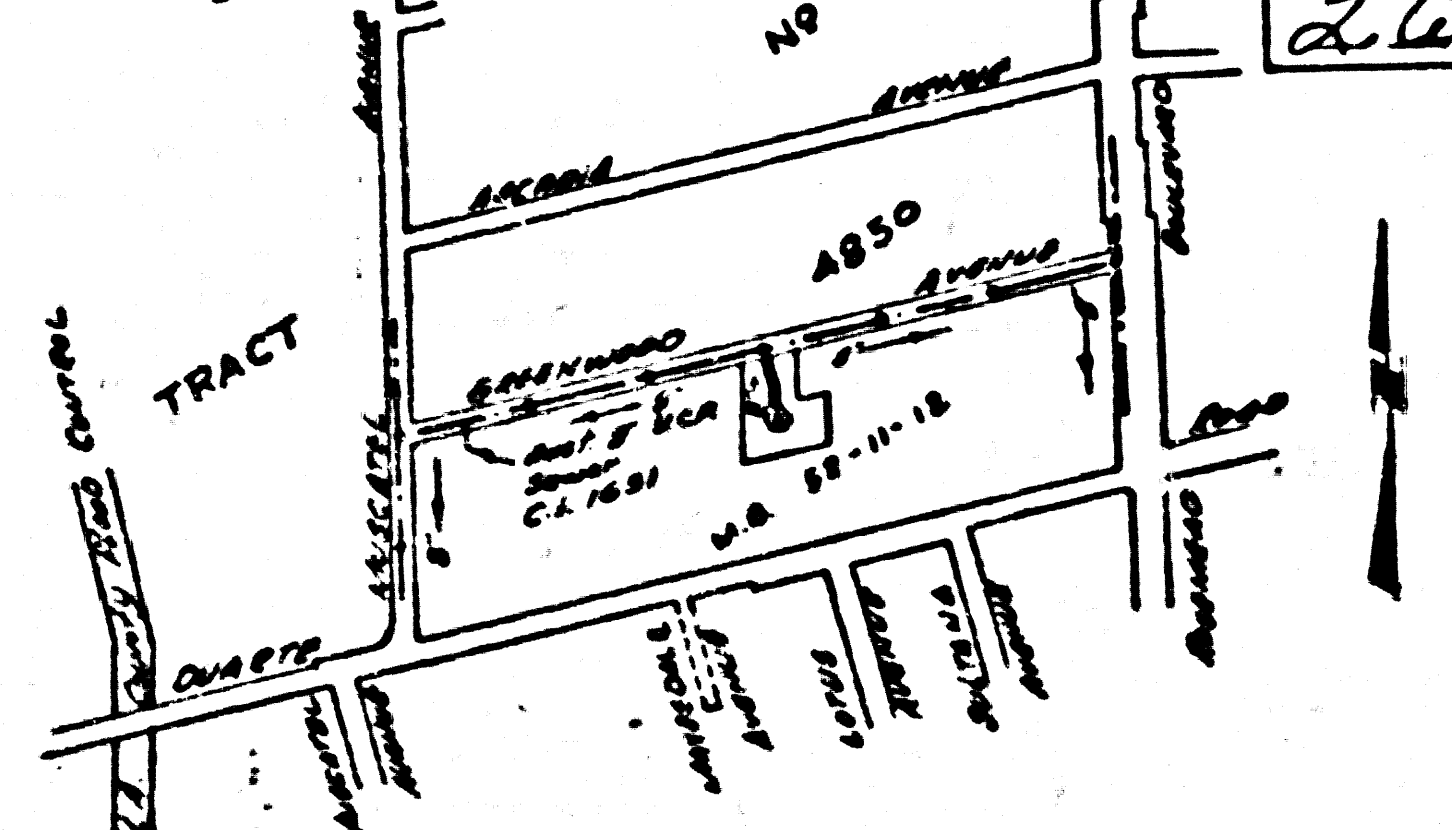


TEMPLE CITY BLDG. DIST. NO 5

NOTE:
 Provide stakes on the property lines or property lines produced at right angles to the sewer line at the center line of each manhole.
 No representative of the County Engineer will survey or layout any portion of the work.
 The owner or his authorized representative shall furnish the County Engineer with grade sheets and station for all house laterals and 1/2" branches and shall provide stakes for them at their proper locations with dimensions plainly marked. Any change in location shall be reported in writing by the owner or his representative.
 No revisions shall be made in these plans without the approval of the County Engineer.
 1. Use standard manhole frames and covers, S-117.
 2. Use standard strength pipe except as noted.
 3. Use cement mortar for all vitrified clay pipe joints.
 4. Resurface all trench within paved area to meet L.A. County Road Dept. or California State Highway Dept. requirements in accordance with permit.
 5. House four feet of sewer at points of intersection with poles, S-118.
 6. House laterals to be constructed with 18" pipe per lot & manhole area.
 7. All structures shall be brick cover structures, S-194.
 8. For allowable leakage test, see Formula No. 1, Spec's, Sec. 51.
 9. Manhole top to be improved right of way to be level with finish grade.



INDEX MAP
 SCALE 1"=600'
 SANITARY SEWER EASEMENT
 P.C. 3584

dated 11-25-55 W. W. [Signature]

SHEETS	PAGES
1	1

PROFILE, ALIGNMENT AND GRADE OF
 SANITARY SEWERS
 TO BE CONSTRUCTED IN

P.C. 3584
 PAGE 1

SANITARY SEWER EASEMENT
 South of Greenwood Avenue Between Reservoir
 Boulevard and Sherman Avenue

PRIVATE CONTRACT NO. 3584
 W. S. 44
 1 SHEET

Scale: 1"=100' HORIZ. 1"=10' VERT.
 JULY 1958
 PREPARED IN THE OFFICE OF
 M. W. FINLEY

FOR LEGEND SEE PLAN NO. S-2-54

NOTE:
 Grades to which this improvement is to be constructed are shown on plans and profiles. Grade points for line of work, center line of streets, or corner line of alleys are shown by circles on profiles. At all points between designated points the grade shall be established so as to conform to a straight line drawn between said designated points.
 Elevations are in feet above U.S.C.T.S. datum or mean sea level.
 This drawing and the data herein are hereby made a part of the specifications.
 Work shall be constructed according to specifications on file in the office of the County Engineer and shall be presented only to the presence of the County Engineer.
 Before work can be started, the contractor must obtain a permit to excavate in County streets from the L.A. County Road Dept., 128 W. 2nd St. and make a deposit with the County Engineer from 200 to \$500.00 in full, sufficient to cover the cost of construction inspection and record plans.
 Approval of this plan by the County of Los Angeles does not constitute a representation on the part of the County of Los Angeles or any independent utility, pipe, or structure within the limits of this project. This note applies to all sheets.
 If work is to be done in a State Highway, a permit must be obtained from the State of California, Division of Highways, 120 South Spring Street.

COUNTY OF LOS ANGELES, CALIFORNIA

Approved, John A. Landry, County Engineer
 Approved, A. M. Ryan
 City Engineer
 A. P. Collins
 Sanitation Engineer
 10-14-55
 Office of County Engineer, Dept. 2, 1st Fl., T.M.O.

21,856

SANITARY SEWER EASEMENT
 P.C. 3584