

BENCH MARK
S.Y. 3109 P.M. 37183 L & T.
N. curb, 228th St. N.L.S. & N.
of E. of Avalon Blvd.

SHEET	PAGES
1	1-2

LOMITA BLDG. DIST. NO 7L

- NOTE:** Provide stakes on the property lines or property lines produced at right angles to the sewer line of the center line of each manhole.
- No representative of the County Engineer will survey or layout any portion of the work.
- The owner or his authorized representative shall furnish the County Engineer with grade sheets and stations for all house laterals and Y branches and shall provide stakes for them of their proper locations with stationing plainly marked. Any change in location shall be requested in writing by the owner or his representative.
- All revisions shall be made in these plans without the approval of the County Engineer.
1. Use standard manhole frames and covers, 3-47.
 2. Use standard strength pipe.
 3. Use cement mortar for all vitrified clay pipe joints.
 4. Resurface all trench within paved area to meet L.A. Co. Road Dept. or California State Highway Dept. requirements in accordance with permit.
 5. Encase four feet of sewer at points of interference with pipes, 5-a-113.
 6. House laterals to be constructed with warts of properly laid 6" below curb grade except as noted.
 7. All structures shall be brick sewer structures, 5-a-104.
 8. For allowable leakage test, use Formula NR 1, Specs. Sec. 51.
 9. Manhole tops in unimproved Rights-of-Way to be 6" above finish grade.

**PROFILE, ALIGNMENT AND GRADE OF
SANITARY SEWERS
TO BE CONSTRUCTED IN**

TRACT NO 16695 Page 1
PRIVATE CONTRACT NO 3587
W.S. 28
ONE SHEET.

SCALE: VERT. 1"=4'
HORIZ. 1"=40'

JUNE 1955

PREPARED IN THE OFFICE OF ARTHUR A. JONES SURVEY SERVICE
By *[Signature]*
FOR LEGEND SEE PLAN NR S-0-64

21,905

NOTE: Grades to which this improvement is to be constructed are shown on plans and profiles. Grade points for top of curbs, center line of streets, or center line of alleys are shown by circles on profiles. At all points between designated points the grade shall be established as to conform to a straight line drawn between said designated points.

Elevations are in feet above U.S.C. datum or mean sea level.

This drawing and the data hereon are hereby made a part of the specifications for the work to be constructed according to specifications on file in the office of the County Engineer and shall be proceeded only in the presence of the County Engineer. Before work can be started, the contractor must obtain a permit to excavate in County streets from the L.A. Co. Road Dept., 100 N. 2nd St. and make a deposit with the County Engineer, 101 1/2 S. Broadway, sufficient to cover the cost of construction, inspection and record plans.

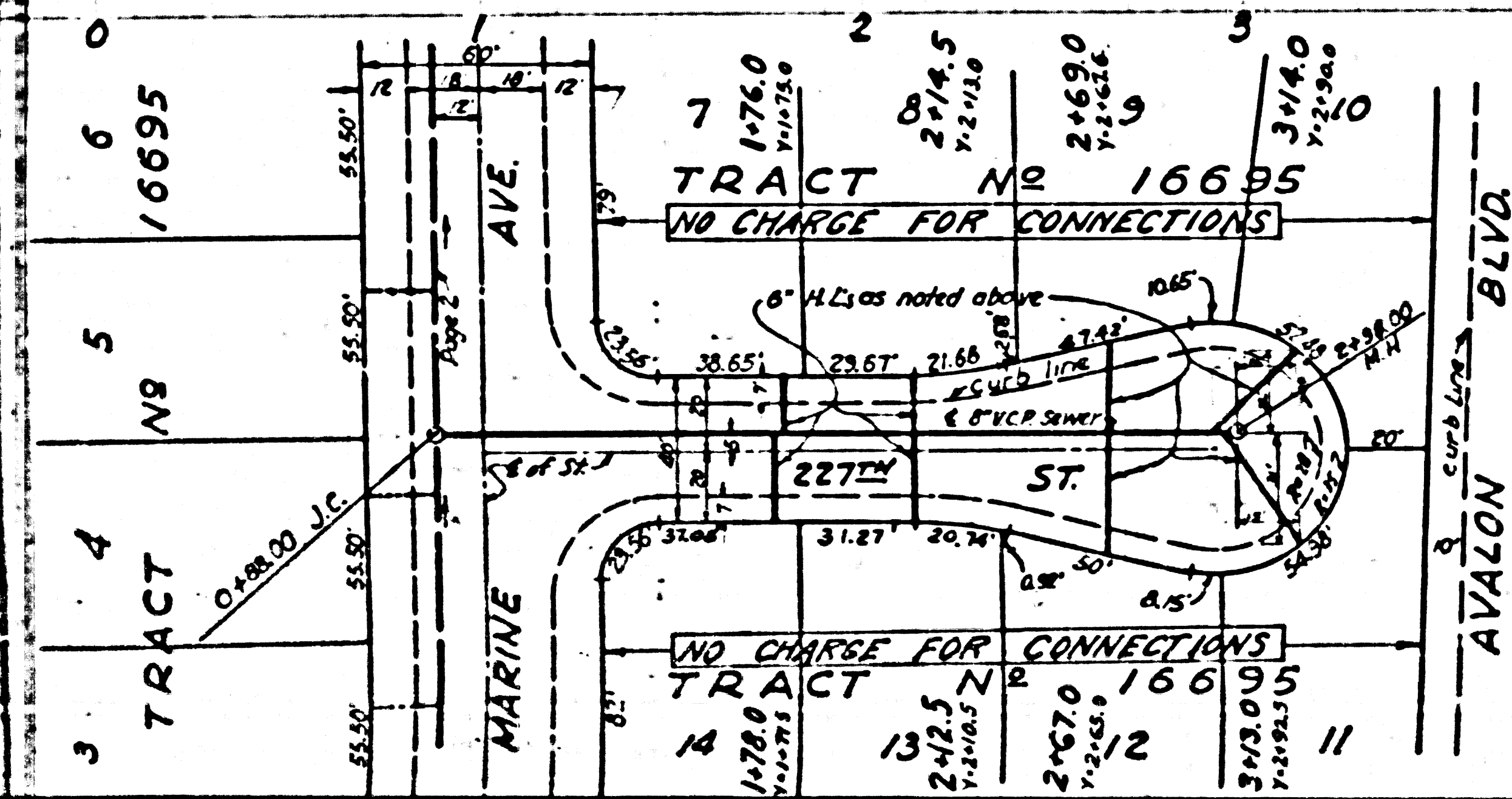
Approval of this plan by the County Engineer does not constitute a representation as to the accuracy of the location of or the existence, or non-existence of any underground utilities, pipes or structures within the limits of this project. This note applies to all utility projects. A permit must be obtained from the State of California, Division of Highways, 120 So. Spring St., Los Angeles, California.

SAN JOSE COUNTY OF LOS ANGELES, CALIFORNIA

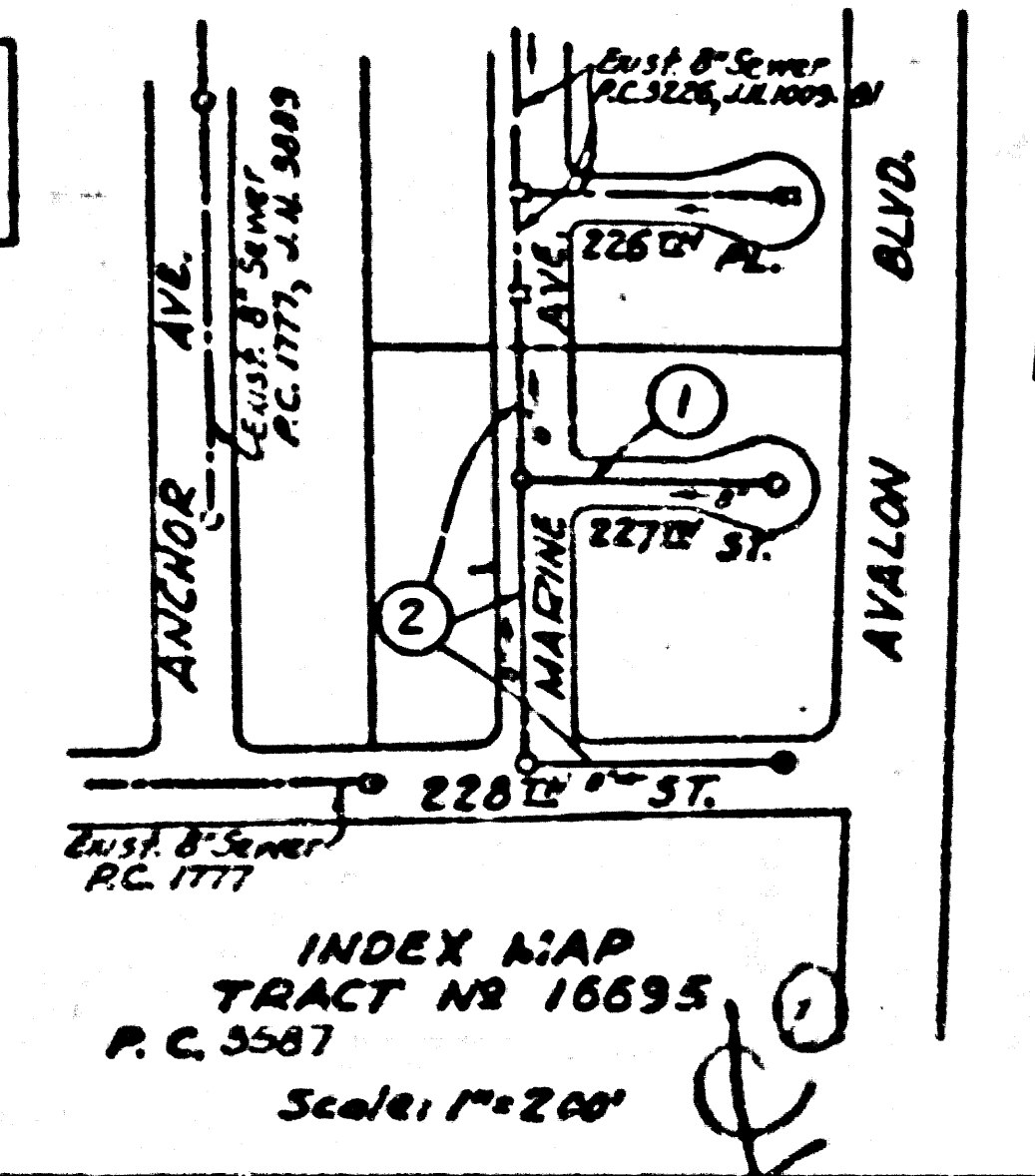
Approved, *[Signature]* County Engineer
By *[Signature]* Sanitation Engineer

Approved, *[Signature]* A.M. Brown
Chief Eng. San. Dist. No. 8
By *[Signature]* Office Engineer

Checked by *[Signature]* 7-27-55
Office of County Engineer, Reg. C.E. No. 7060



COLLECT CHARGES
AS INDICATED
in Section 7-27-55

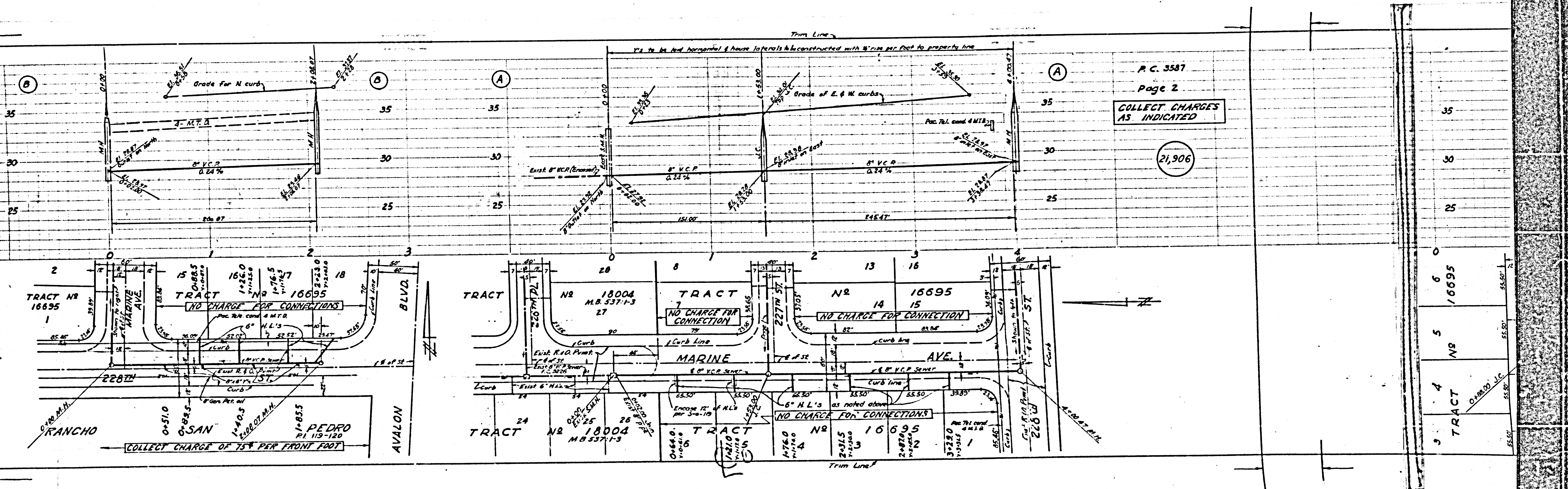


Checked 12-6-55 *[Signature]*

P.C. 3587

TRACT NO 16695

PC 3587



P.C. 3587
 Page 2
 COLLECT CHARGES
 AS INDICATED
 21,906

TRACT NO. 16695
 TRACT NO. 18004
 TRACT NO. 16695