

P.C. 3588
PAGE 2

NO CHARGE FOR CONNECTIONS

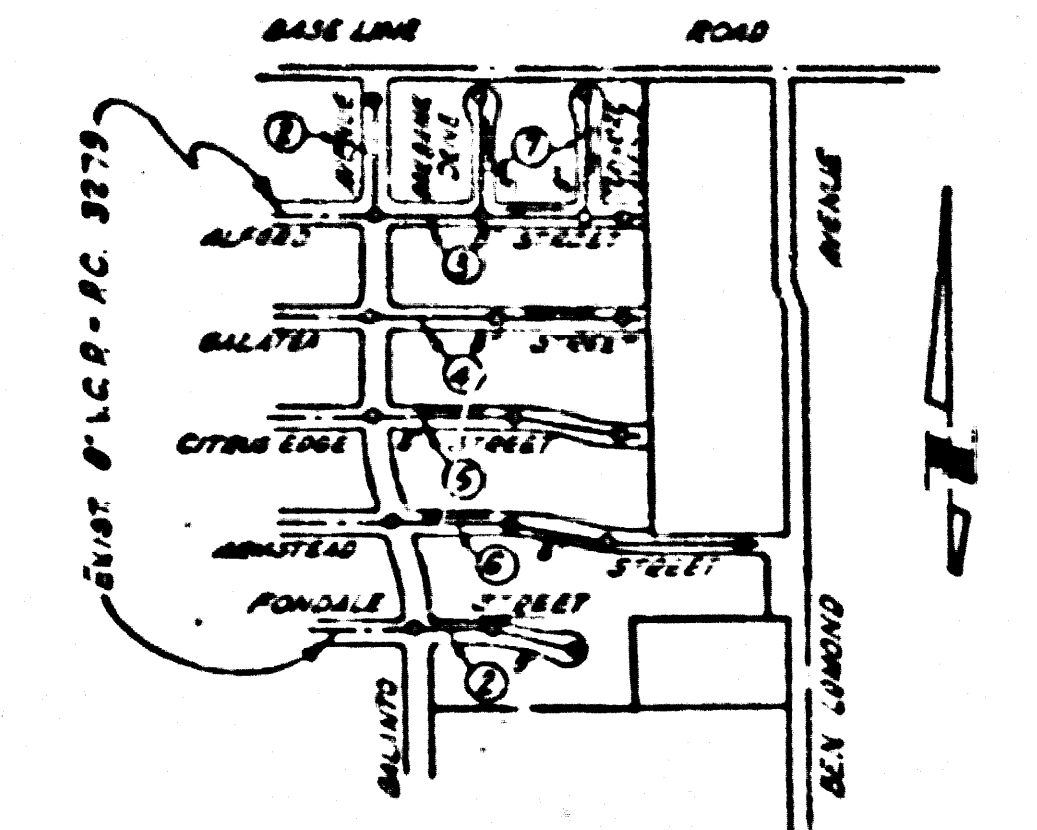
23,570

BENCH MARK S.G.-1180
Lead & Tack on top of Concrete Retaining Wall, 25' North of North East Corner of Citrus Ave, Base Line Road.
ELEV. 600.672

NO CHARGE FOR CONNECTIONS
P. K. Huber E-16-56

SAN DIMAS Bldg. Dist. No. 10

- NOTE:
Provide stakes on the property lines or property lines produced at right angles to the sewer line at the center line of each manhole.
No representative of the County Engineer will survey or layout any portion of the work. The owner or his authorized representative shall furnish the County Engineer with grade sheets and stations for all house laterals and Y branches and shall provide stakes for them at their proper locations with stationing plainly marked. Any change in location shall be requested in writing by the owner or his representative.
No revisions shall be made in these plans without the approval of the County Engineer.
1. Use standard manhole frames and covers, S-o-117.
 2. Use standard strength pipe except as noted.
 3. Use cement mortar for all vitrified clay pipe joints.
 4. Resurface all trench within paved area to meet L.A. County Road Dept. or Calif. State Highway Dept. requirements in accordance with permit.
 5. Encase four feet of sewer at points of interference with poles, S-o-119.
 6. House laterals to be constructed with inverts at property line feet below curb grade except as noted.
 7. All structures shall be brick sewer structures, S-o-104.
 8. For allowable leakage test, use Formula No., Spec's., Sec. 54.
 9. Manhole tops in unimproved Right-of-Way to be 6" above finish grade.
 10. *The private engineer is to furnish the house lateral depth of the property line below top of curb elev. for each house lateral on the grade street.*



INDEX MAP
TRACT NO 16833
SCALE: 1" = 400'
P.C. 3588

PROFILE, ALIGNMENT AND GRADE OF
SANITARY SEWERS
TO BE CONSTRUCTED IN
TRACT N^o 16833

P.C. 3588
PAGE 1

23,569
(7)

PRIVATE CONTRACT NO. 3588
W.S. 47
2 SHEETS

Scale: 1" = 100'
JULY 1955

PREPARED BY THE OFFICE OF
EDWARD N. FRISIUS
C.E. No. 6367
FOR LEGEND SEE PLAN NO. S-o-64

NOTE:
Grades to which this improvement is to be constructed are shown on plans and profiles. Grade points for top of curbs, center line of streets, or center line of alleys are shown by circles on profiles. At all points between designated points the grade shall be established so as to conform to a straight line drawn between said designated points.
Elevations are in feet above U.S.G.S. datum or mean sea level.
This drawing and the data hereon are hereby made a part of the specifications. Work shall be constructed according to specifications on file in the office of the County Engineer and shall be prosecuted only in the presence of the County Engineer.
Before work can be started, the contractor must obtain a permit to excavate in County streets from the L.A. County Road Dept., 108 W. 2nd St., and make a deposit with the County Engineer, Room 30, 559 South Broadway, sufficient to cover the cost of construction inspection and record plans.
Approval of this plan by the County of Los Angeles does not constitute a representation as to the accuracy of the location of or the existence or non-existence of any underground utility, pipe, or structure within the limits of this project. This note applies to all sheets.
If work is to be done in a State Highway, a permit must be obtained from the State of California, Division of Highways, 120 South Spring Street.

COUNTY OF LOS ANGELES, CALIFORNIA

Approved, William J. Fox, County Engineer
Approved, A. M. Brown
Checked by: *P. K. Huber* E-16-56
Office Engineer

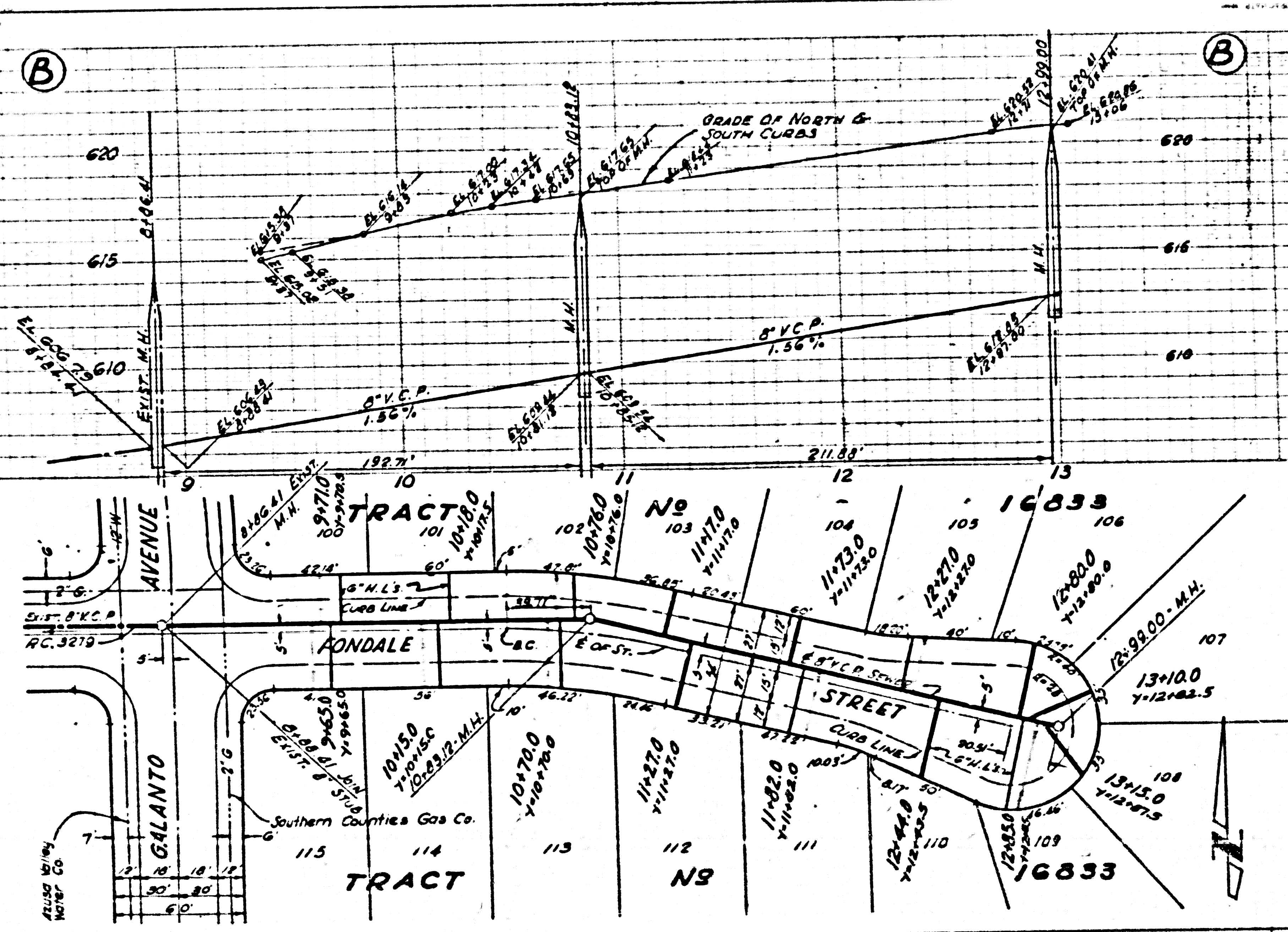
TRACT NO 16833

P.C. 3588
1

P.C. 9583
PAGE 3

NO CHARGE FOR CONNECTIONS

23,571



(B)

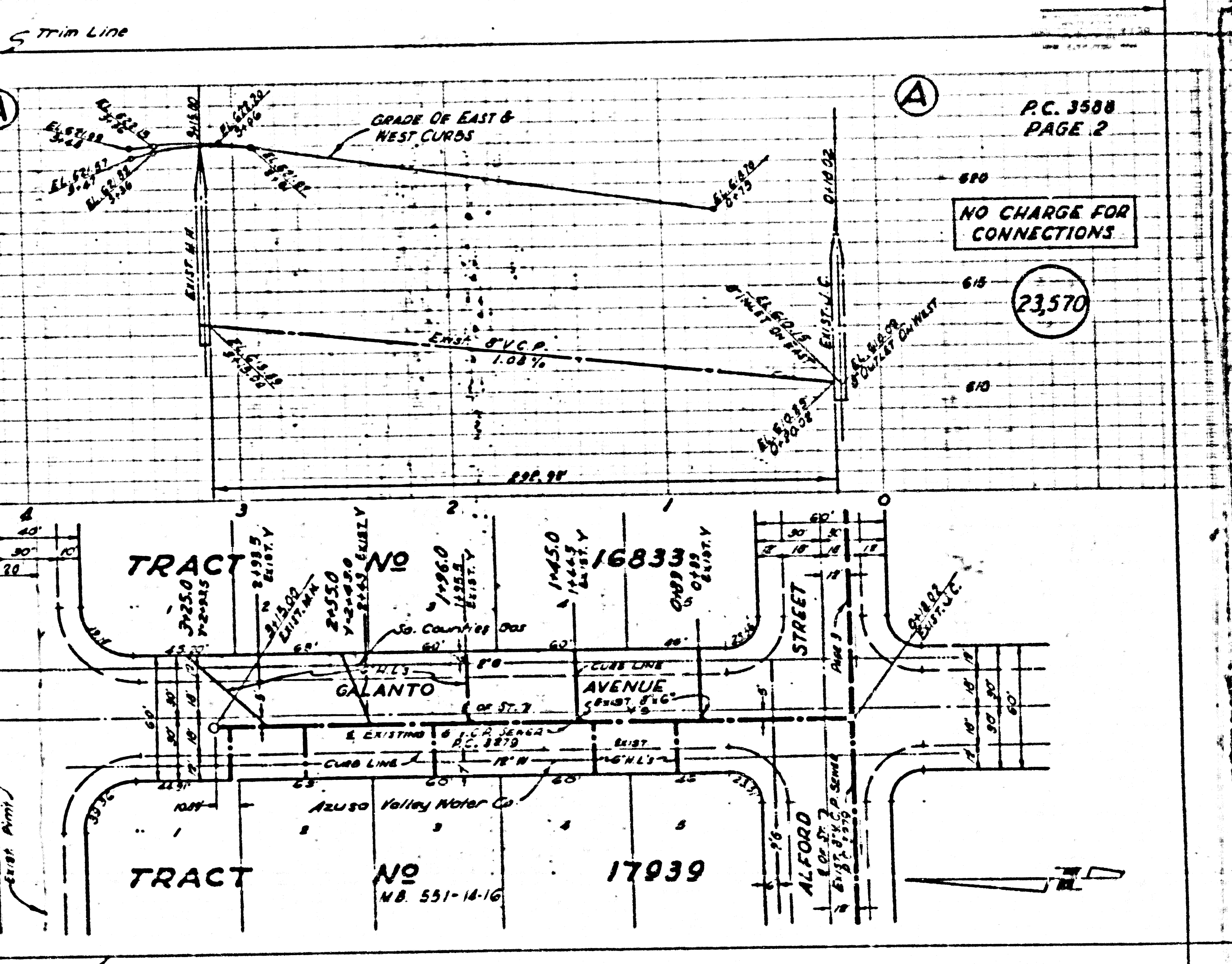
(A)

(A)

P.C. 3588
PAGE 2

NO CHARGE FOR CONNECTIONS

23,570

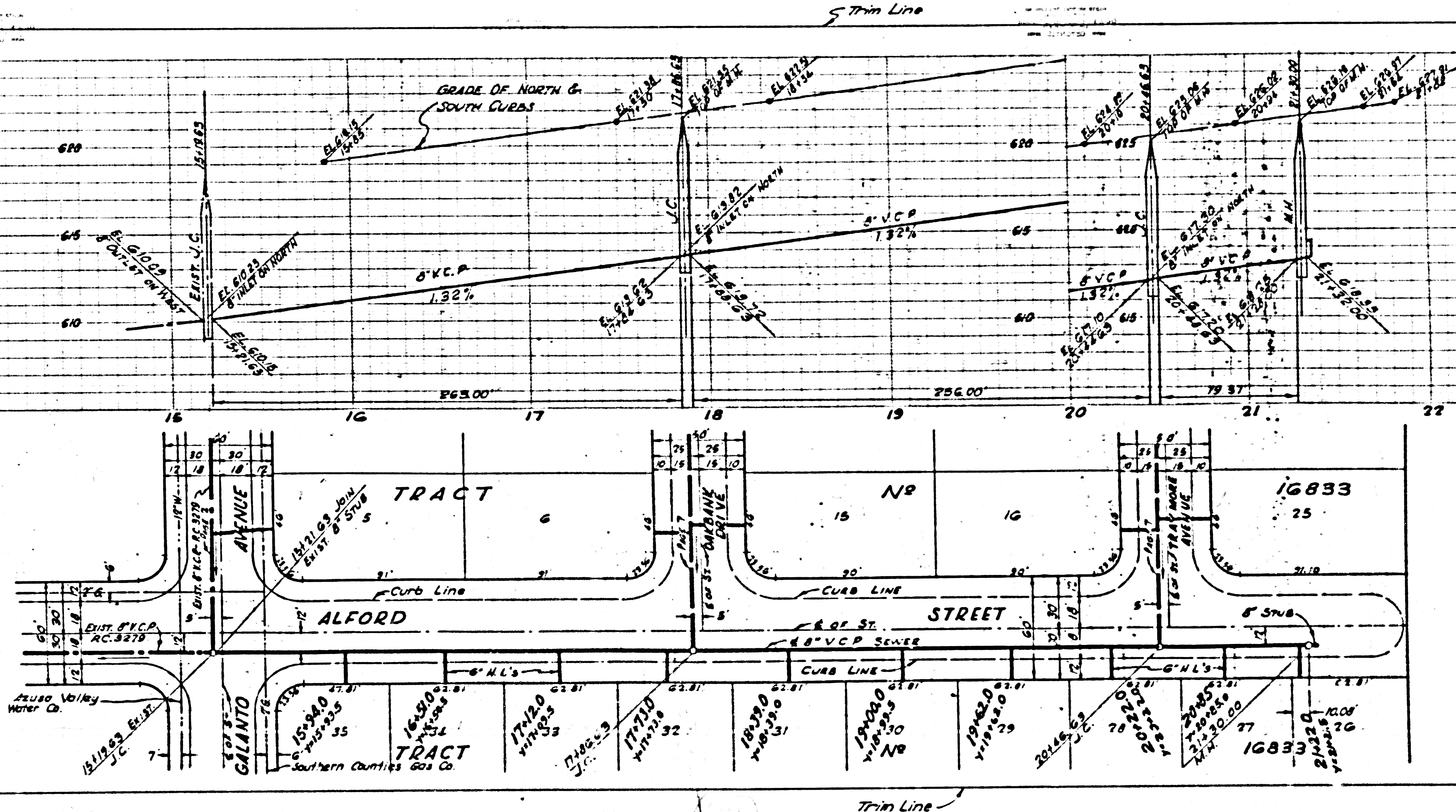


Trim Line

PC. 3588
PAGE 4

NO CHARGE FOR
CONNECTION

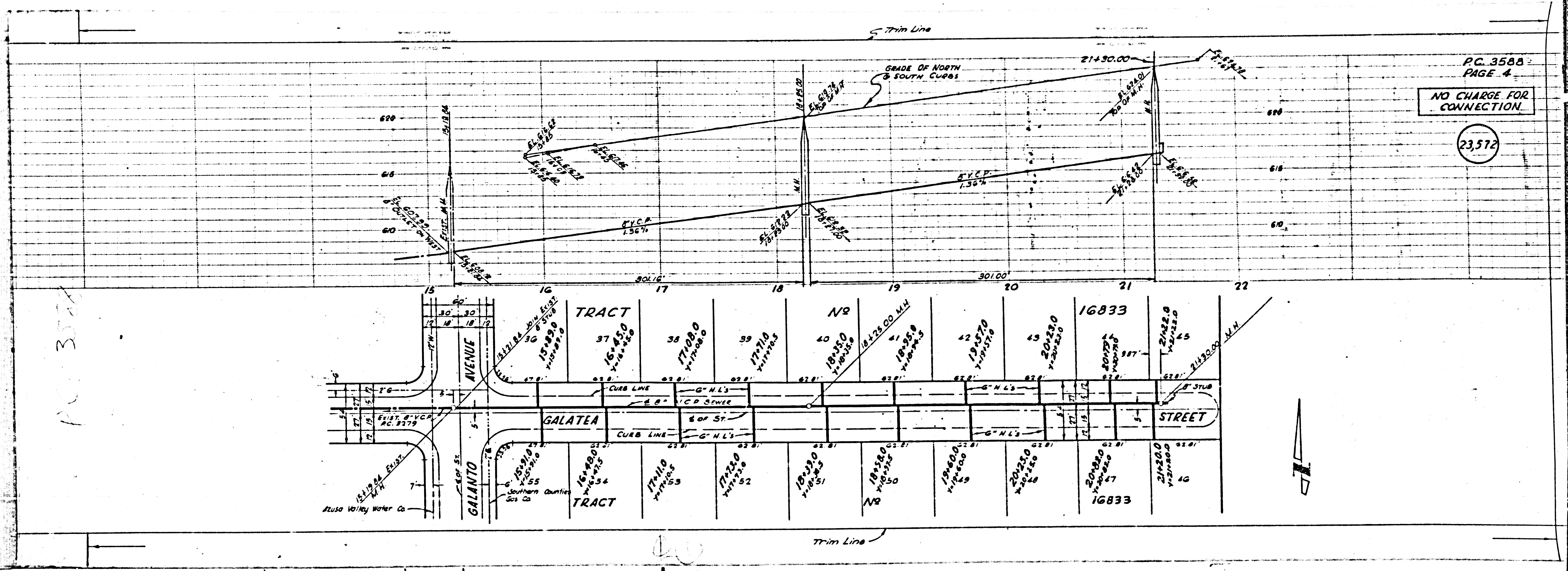
23,572



PC. 3588
PAGE 5

NO CHARGE FOR
CONNECTIONS

23,571



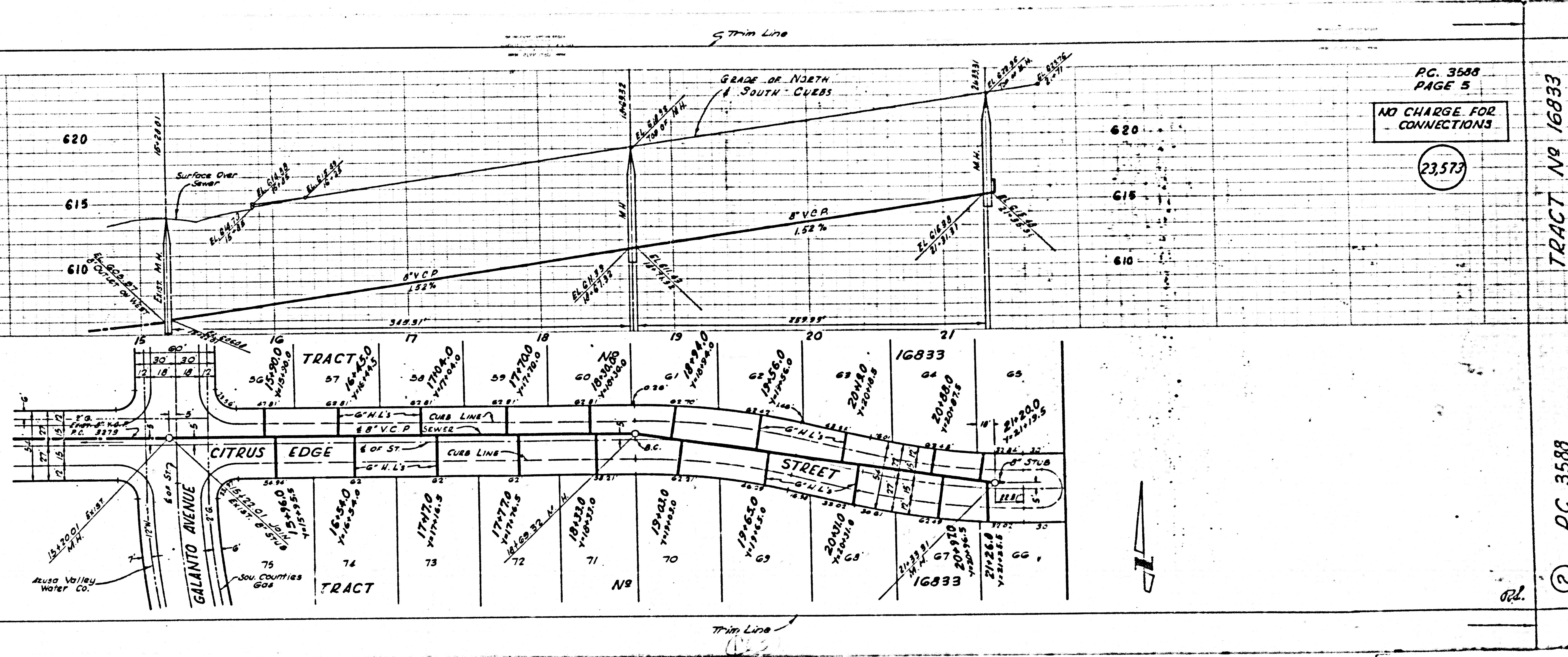
PC 3588
PAGE 4

NO CHARGE FOR
CONNECTION.

23,572

PC 3588

FOR
ONS



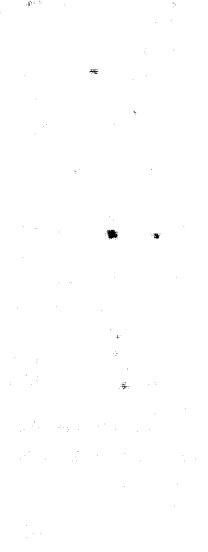
PG. 3588
PAGE 5

NO CHARGE FOR
CONNECTIONS

23,573

TRACT No 16833

AC 3588



PR

P.C. 3503
PAGE 7

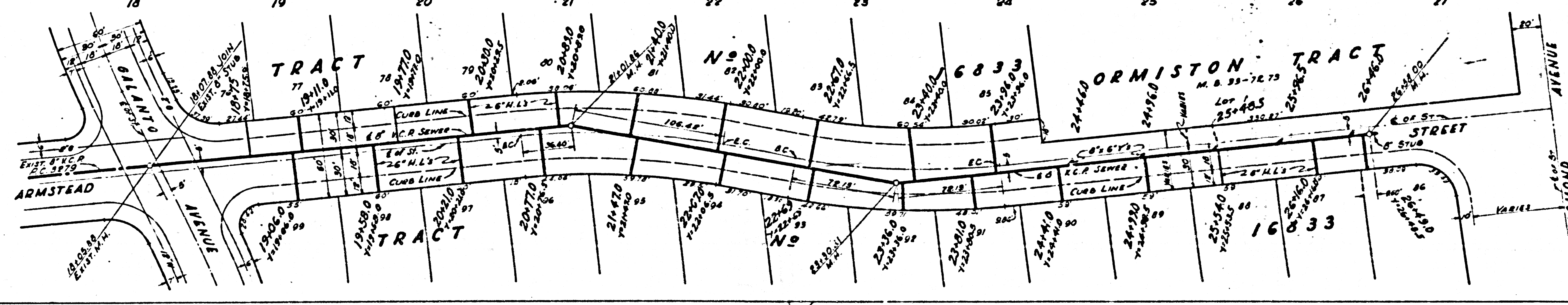
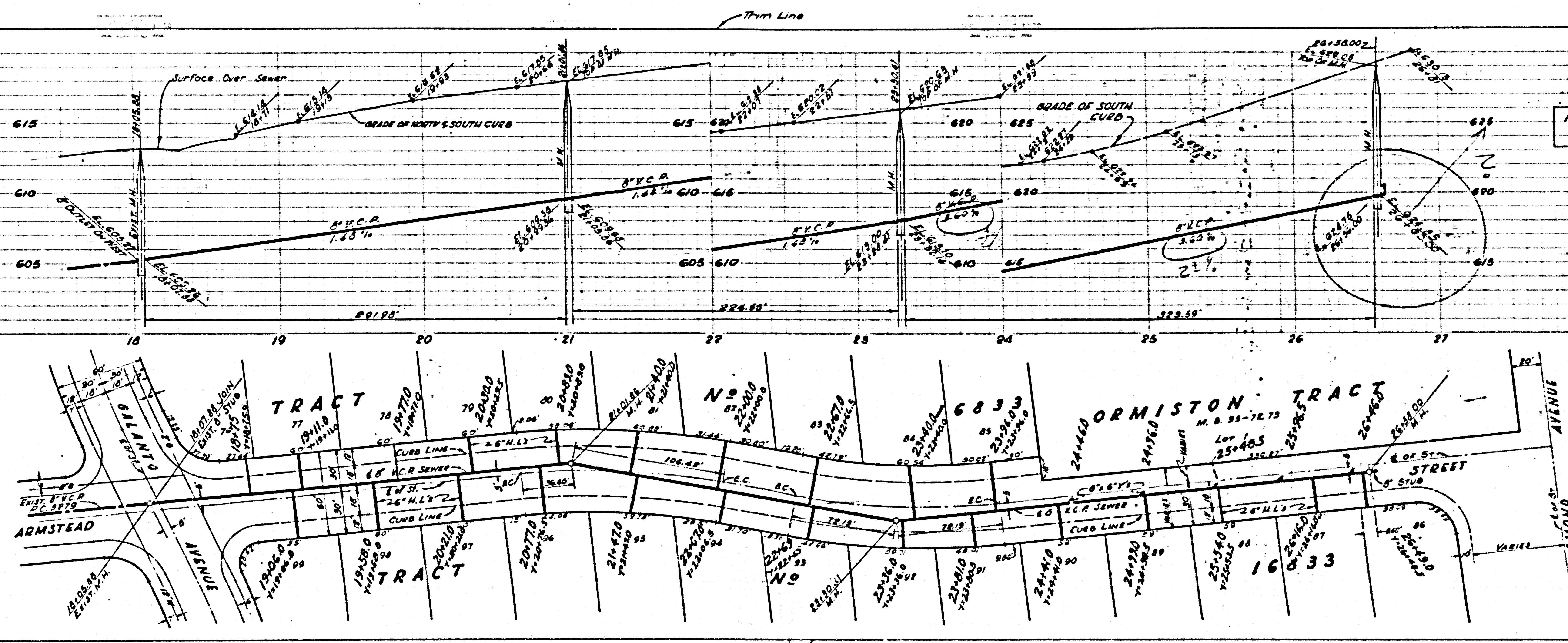
NO CHARGE FOR
CONNECTION

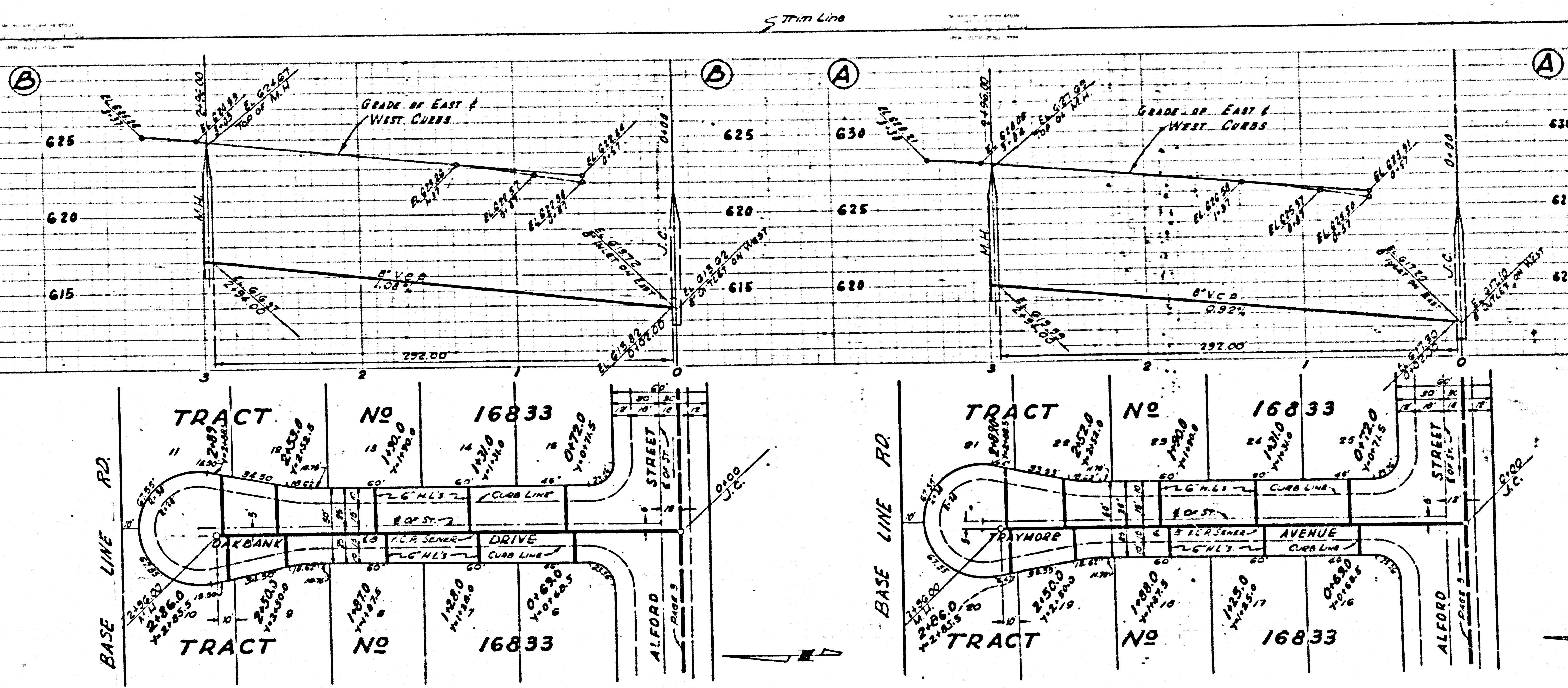
23,575

P.C. 3855
PAGE 6

NO CHARGE FOR
CONNECTIONS

23,574





P.C. 3563
PAGE 7

NO CHARGE FOR CONNECTION

23,575

3566