

WHITTIER BLDG. DIST. NO.11

- NOTE:**
- Provide stakes on the property lines or property lines produced at right angles to the sewer line at the center line of each manhole.
- No representative of the County Engineer will survey or layout any portion of the work.
- The owner or his authorized representative shall furnish the County Engineer with grade sheets and stations for all house laterals and 1/2 branches and shall provide stakes for them at these proper locations with stationing plainly marked. Any change in location shall be requested in writing by the owner or his representative.
- No revisions shall be made in these plans without the approval of the County Engineer.
1. Use standard manhole frames and covers, S-a-117.
 2. Use standard strength pipe except as noted.
 3. Use cement mortar for all vitrified clay pipe joints.
 4. Resurface all trench within paved area to meet L. A. County Road Dept. or California State Highway Dept. requirements in accordance with permit.
 5. Encase four feet of sewer at points of interference with poles, S-a-119.
 6. House laterals to be constructed with inverts of property line _____ feet below curb grade except as noted.
 7. All structures shall be brick sewer structures, S-a-104.
 8. For allowable leakage test, see Formula No. 1, Spec'n, Sec. 81.
 9. Manhole tops in unimproved Rights-Of-Way to be 6" above finish grade.

SHEET NO	PAGES
1	1-0

COLLECT CHARGES AS INDICATED
L. Curtis 8-17-55

Checked 11-7-55 W. J. Fox

PAGE 1
P.C. 3589

PROFILE, ALIGNMENT AND GRADE OF
SANITARY SEWERS
TO BE CONSTRUCTED IN
TRACT NO. 21773

21681

PRIVATE CONTRACT NO. 3589
W. S. 34
1 SHEET
Scale: VERT. 1" = 4' HORIZ. 1" = 40' JUNE 1955
PREPARED IN THE OFFICES OF
MEMMERER ENGINEERING CO. INC.

W. S. 34
FOR LEGEND SEE PLAN NO. S-a-64

NOTE:

Grades to which this improvement is to be constructed are shown on plans and profiles. Grade points for top of curb, center line of street, or center line of alley are shown by circles on profiles. At all points between designated points the grade shall be established so as to conform to a straight line drawn between said designated points.

Elevations are in feet above U.S.G.S. datum or mean sea level.

This drawing and the data herein are hereby made a part of the specifications.

Work shall be constructed according to specifications on file in the office of the County Engineer and shall be prosecuted only in the presence of the County Engineer.

Before work can be started, the contractor must obtain a permit to excavate in County streets from the L.A. County Road Dept., 120 W. 2nd St. and make a deposit with the County Engineer, 255 S. Broadway - Room 318, sufficient to cover the cost of construction inspection and record plans.

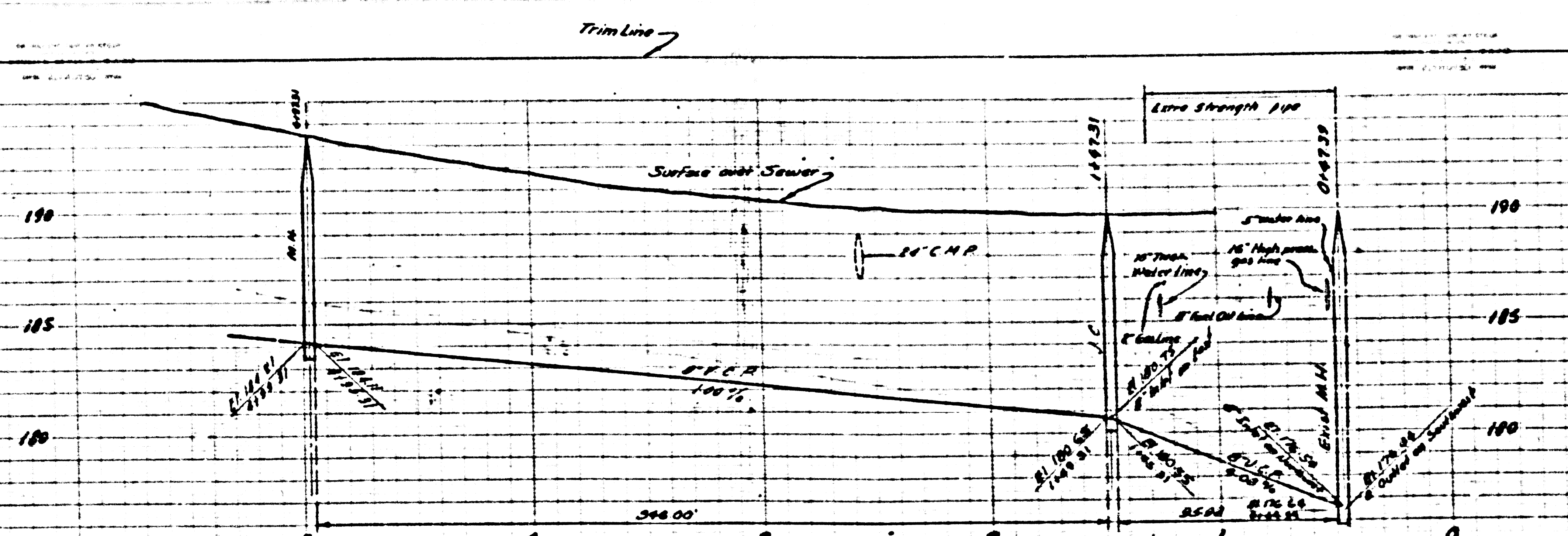
Approval of this plan by the County of Los Angeles does not constitute a representation as to the accuracy of the location of or the existence or non-existence of any underground utility, pipe, or structure within the limits of this project. This note applies to all sheets.

If work is to be done in a State Highway, a permit must be obtained from the State of California, Division of Highways, 129 South Spring Street.

COUNTY OF LOS ANGELES, CALIFORNIA

Approved, William J. Fox, County Engineer
Checked by *W. S. 34* 8-22-55
Office of County Engineer, Box C. E. No. 5406

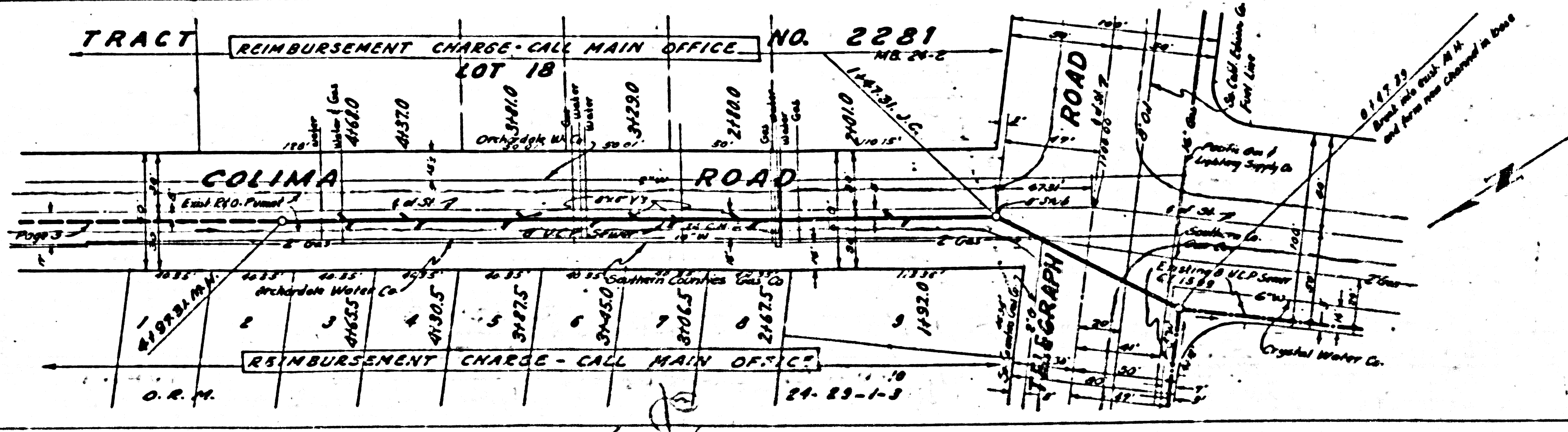
TRACT NO. 21773
SHEET 1 OF 1 SHEET
P.C. 3589
Series 75-02
882.99
P.C. 3589



PAGE 8
P.C. 3589

COLLECT CHARGES
AS INDICATED

21,682



TRACT REIMBURSEMENT CHARGE - CALL MAIN OFFICE NO. 2281

LOT 18

REIMBURSEMENT CHARGE - CALL MAIN OFFICE

24-23-1-3

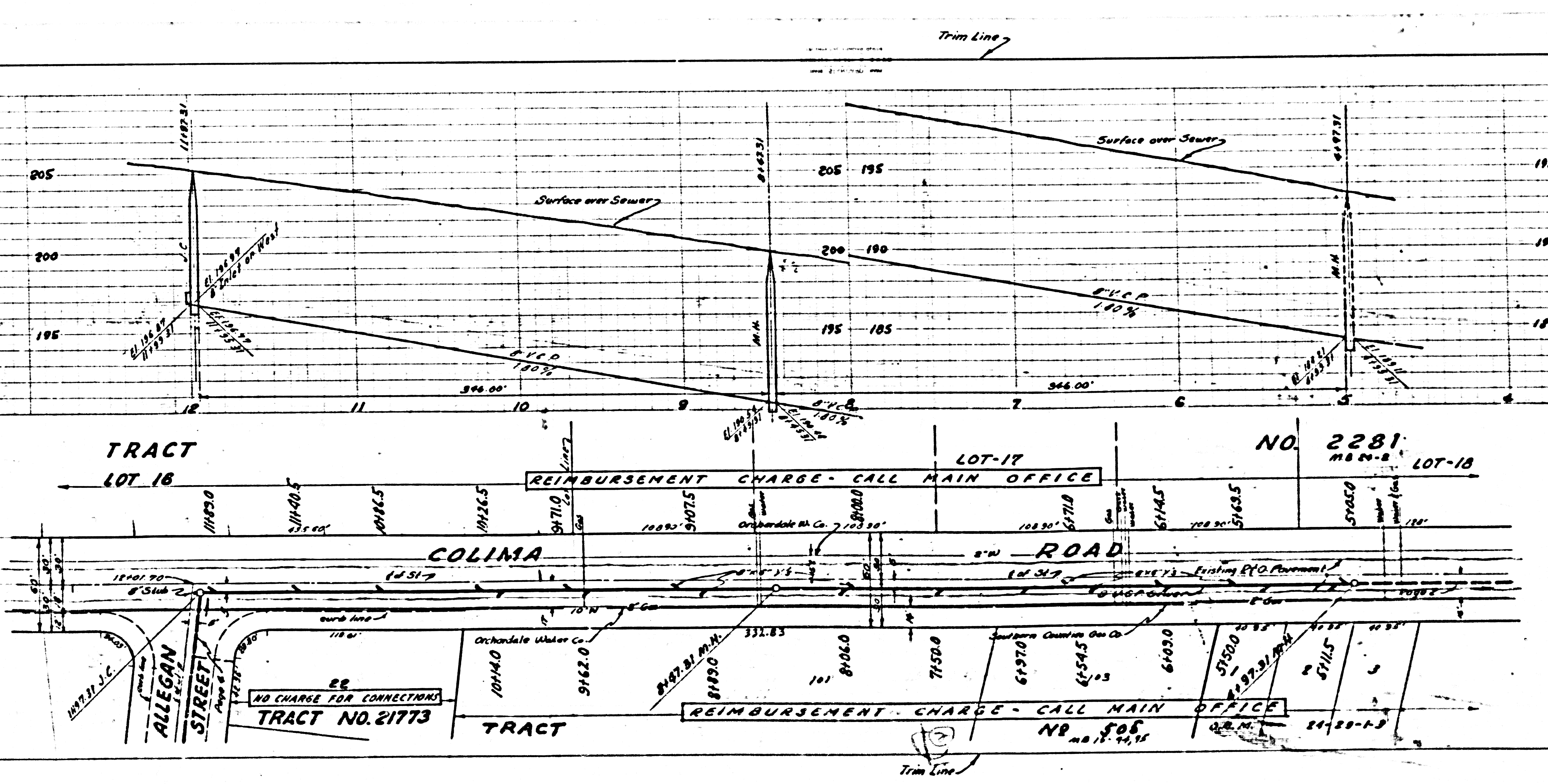
Trim Line

Trim Line

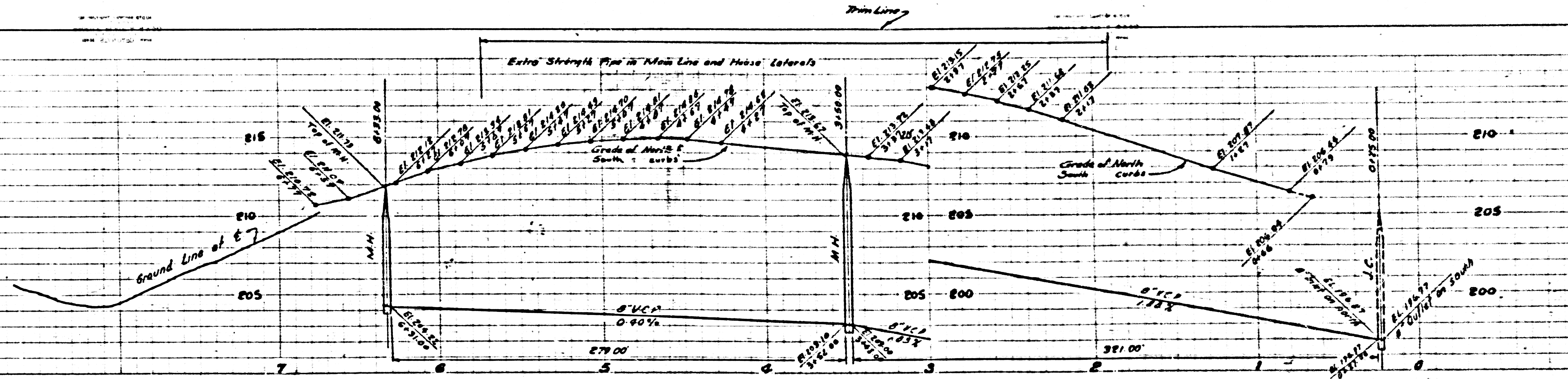
PAGE 3
P.C. 3589

COLLECT CHARGES
AS INDICATED

21,683



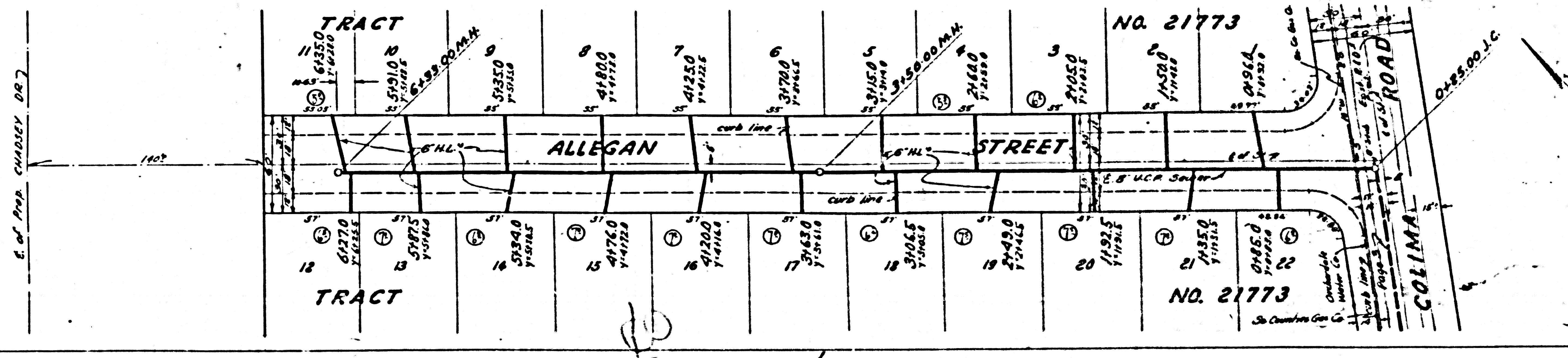
PC 3589



PAGE 4
P.C. 3589

NO CHARGE FOR CONNECTIONS

21684



E. of P.M. CHADLEY DR 7

NO. 21773

NO. 21773