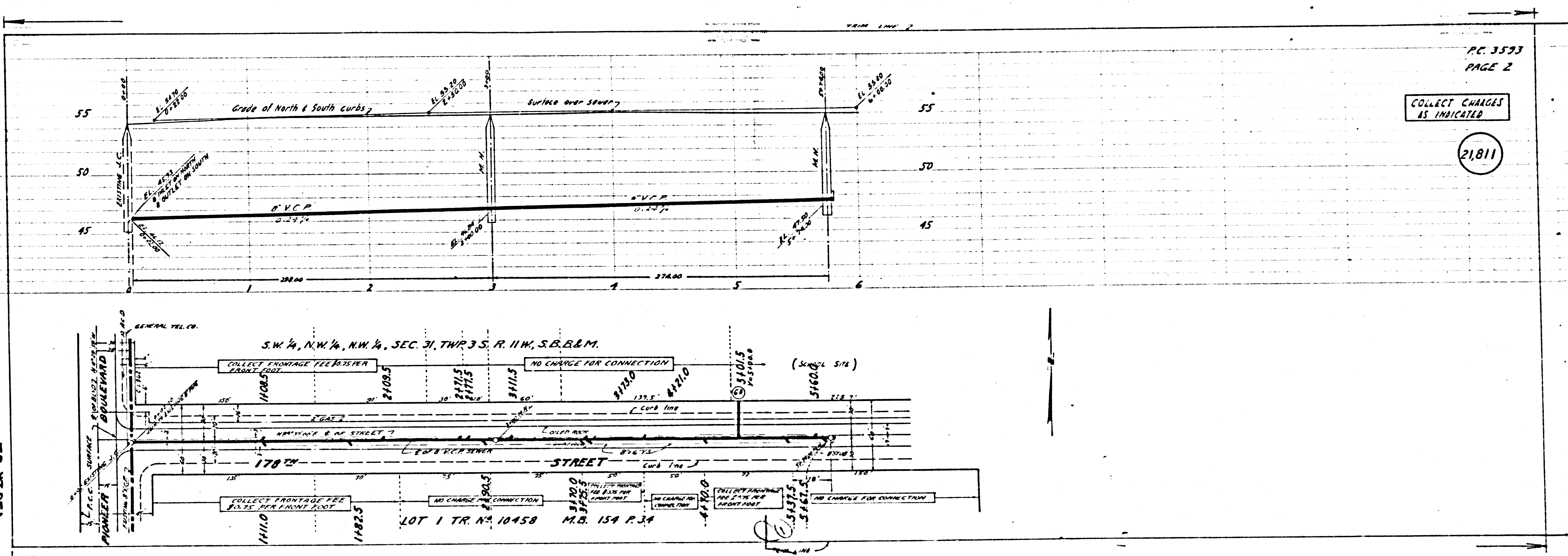


PC 3593
158 SA 2X



P.C. 3593
PAGE 2

COLLECT CHARGES
AS INDICATED

21,811

S.W. 1/4, N.W. 1/4, N.E. 1/4, SEC. 31, TWP 3 S., R. 11 W., S.B. & M.

LOT 1 TR. NO. 10458 M.B. 154 P. 34