

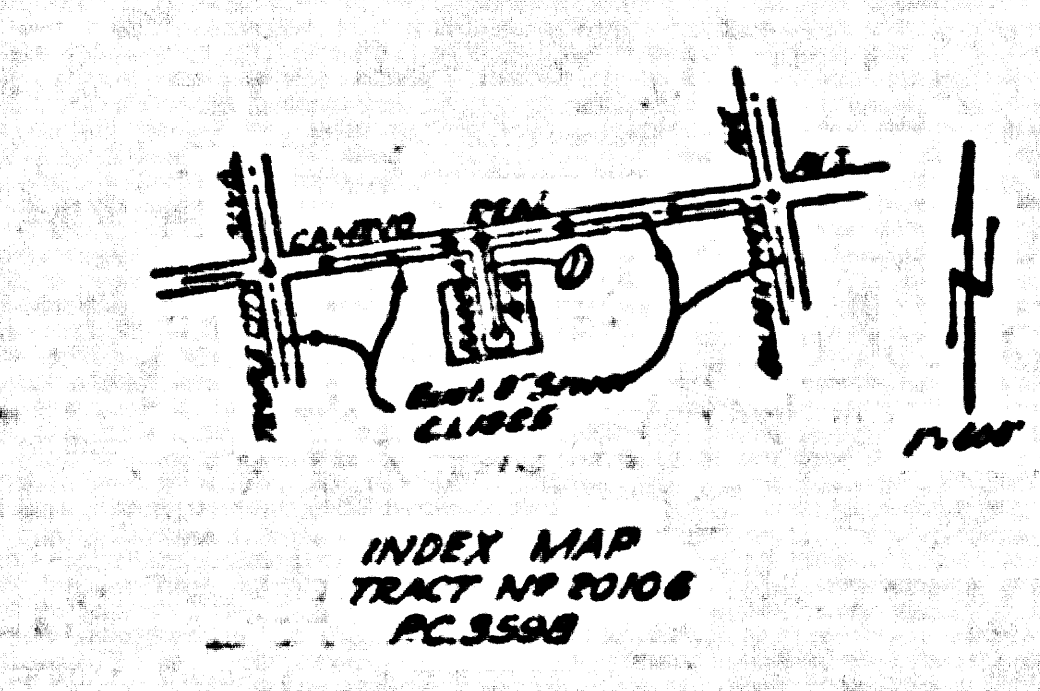
Trim Line 7

TEMPLE CITY BLDG. DIST. NO 5

NOTE:
 Provide stakes on the property lines or property lines produced at right angles to the sewer line at the center line of each manhole.
 The representative of the County Engineer will survey or layout any portion of the work.
 The owner or his authorized representative shall furnish the County Engineer with grade sheets and stations for all house laterals and Y branches and shall provide stakes for them at their proper locations with platens or plainly marked. Any change in location shall be reported in writing by the owner or his representative.
 No variations shall be made in these plans without the approval of the County Engineer.

1. Use standard strength frames and covers, S-117.
2. Use standard strength pipe except as noted.
3. Use cement mortar for all vitrified clay pipe joints.
4. Resurface all trench within paved area to meet L.A. County Road Dept. or California State Highway Dept. requirements in accordance with permit.
5. Excavate four feet of cover of paths of interference with poles, S-117.
6. House laterals to be constructed with laterals of property line, 6 feet below curb grade except as noted.
7. All structures shall be brick cover structures, S-104.
8. For allowable leakage test, see Formula No. 1, Spurr's, Sec. 51.

PLAN 5688 21.504.888
 121 E. 2nd Temple City Blvd
 2 1/2" x 3 1/2" curb S.E. on Temple City Blvd Quarter



SHEET	PAGE
1	1

NO CHARGE FOR CONNECTIONS TO LOT 12-15-55

INDEX MAP
 TRACT NO 20106
 PC. 3558

PEOPLE, ALIGNMENT AND GRADE OF
SANITARY SEWERS
 TO BE CONSTRUCTED IN
TRACT NO 20106

PC. 3598
 Page 1

21,951

PRIVATE CONTRACT NO. 2598
 W. S. 44
 ONE SHEET
 Scale: 1" = 40' JULY 1955
 PREPARED IN THE OFFICES OF
KARL F TUTTLE ENGINEERING CO. INC.

Jay M. Tuttle
 No. C.E. 8596
 FOR LEGEND SEE PLAN NO. S-104

NOTE:
 Grades to which this improvement is to be constructed are shown on plans and profiles. Grade points for top of curb, center line of streets, or center line of alleys are shown by circles on profiles. At all points between designated points the grade shall be established so as to conform to a straight line between said designated points.
 Elevations are in feet above U.S.C.S. datum or mean sea level.
 Work shall be constructed according to specifications on file in the office of the County Engineer and shall be prosecuted only in the presence of the County Engineer.
 Before work can be started, the contractor must obtain a permit to excavate in County streets from the L.A. County Road Dept., 188 W. 2nd St., and make a deposit with the County Engineer, 2nd St., 228 S. Broadway, sufficient to cover the cost of construction inspection and record.
 Approval of this plan by the County of Los Angeles does not constitute a representation or warranty on the part of the County of Los Angeles or its officers or employees of any underground utility, pipe, or structure within the limits of this project. This note applies to all other utility work to be done in a State Highway, a permit must be obtained from the State of California, Division of Highways, 120 South Spring Street.

COUNTY OF LOS ANGELES, CALIFORNIA
 Approved, William J. Fox, County Engineer
 Approved, A. M. Scott
 Chief Clerk, CO. 140 007, NO. 15
 W. J. Douglas
 Chief Engineer
 Dated at Los Angeles, California, 7-17-55
 Office of County Engineer, Box C 8 on 2nd St.

Checked 12-15-55 McKenna

TRACT NO 20106
 PC. 3598