

P.C. 3599
PAGE 1

PROFILE, ALIGNMENT AND GRADE OF
SANITARY SEWERS
TO BE CONSTRUCTED IN

TRACT NO. 21163

PRIVATE CONTRACT NO. 3599
W. S. 47

SHEET 1 OF 1 SHEETS
Scale: $\frac{1}{4}$ " = 1'-0" HORIZ. $\frac{1}{8}$ " = 1'-0" VERT.
JULY 1955

PREPARED IN THE OFFICE OF
WALSH & ASSOCIATES INC.
FOR LEGEND SEE PLAN NO. S-2-64

21,484

NOTE:
Grades to which this improvement is to be constructed are shown on plans and profiles. Grade points for top of curbs, center line of streets, or center line of alleys are shown by circles on profiles. At all points between designated points the grade shall be established up or down to conform to a straight line drawn between said designated points. Elevations are in feet above U.S.G.S. datum or mean sea level. This drawing and the data hereon are hereby made a part of the specifications. Work shall be constructed according to specifications on file in the office of the County Engineer and shall be prosecuted only in the presence of the County Engineer. Before work can be started, the contractor must obtain a permit to excavate in County streets from the L.A. County Road Dept., 108 W. 2nd St. and make a deposit with the County Engineer, Room 324, 254 South Broadway, Sufficient to Cover The Cost of construction inspection and record plans. Approval of this plan by the County of Los Angeles does not constitute a representation as to the accuracy of the location of or the existence or non-existence of any underground utility, pipe, or structure within the limits of this project. This note applies to all sheets. If work is to be done in a State Highway, a permit must be obtained from the State of California, Division of Highways, 120 South Spring Street.

COUNTY OF LOS ANGELES, CALIFORNIA
Approved, William J. Fox, County Engineer
Approved, A. M. Rows
CHAS. BROS. CO. SAN. DIST. NO. 12
Checked by *[Signature]*
Office of County Engineer, Box C. S. No. 7162

SAN DIMAS BUILDING DISTRICT NO. 10

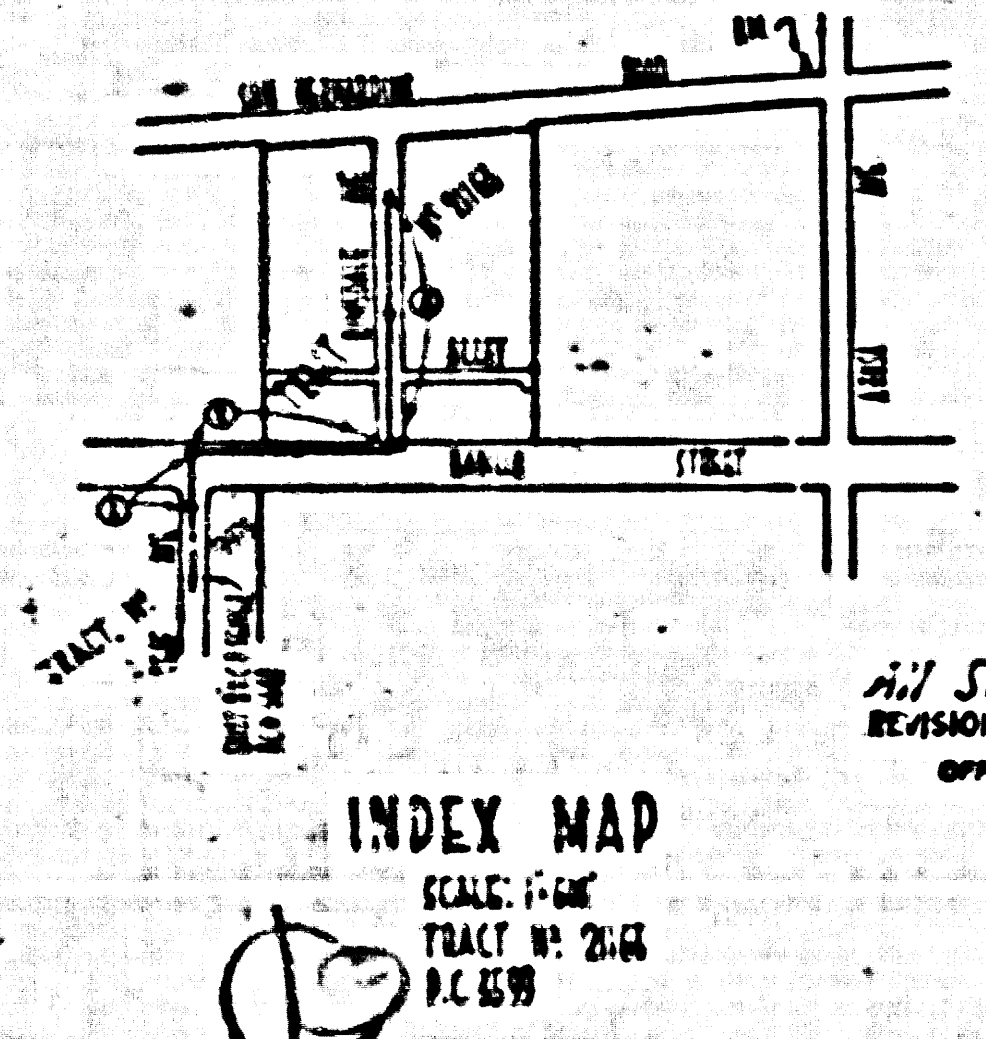
- NOTE:
Provide stakes on the property lines or property lines produced at right angles to the sewer line at the center line of each manhole. No representative of the County Engineer will survey or layout any portion of the work. The owner or his authorized representative shall furnish the County Engineer with grade sheets and stations for all house laterals and Y branches and shall provide stakes for them at their proper locations with stationing plainly marked. Any change in location shall be requested in writing by the owner or his representative. No revisions shall be made in these plans without the approval of the County Engineer.
1. Use standard manhole frames and covers, S-2-117.
 2. Use standard strength pipe except as noted.
 3. Use cement mortar for all vitrified clay pipe joints.
 4. Resurface all trench within paved area to meet L.A. County Road Dept. or Calif. State Highway Dept. requirements in accordance with permit.
 5. Encase four feet of sewer at points of interference with poles, S-2-119.
 6. House laterals to be constructed with inverts at property line... 5 feet below curb grade except as noted.
 7. All structures shall be brick sewer structures, S-2-104.
 8. Manhole tops in unimproved Rights-Of-Way to be 6" above finish grade.
 9. For allowable leakage test, see Formula No. 1, Spec's., Sec. 51.

BENCH MARK:
S 6' BY 7 1/2" x 1 1/2" WEST OF CURB CENTER AT NORTH WEST CORNER OF ASHLA BLDG. & SAN DIMAS BLDG. ROAD
ELEV. - 48.889

APPROVED INDUSTRIAL
WASTE DIVISION
BY: *Robert Vickers 9/10/55*

COLLECT CHARGES
AS INDICATED
L. Curtis 8-17-55

TABLE	
SHEET NO.	PAGES
1	123



INDEX MAP
SCALE: 1" = 40'
TRACT NO. 21163
P.C. 3599

Checked 10-3-55 W. Fox

1599
L-2

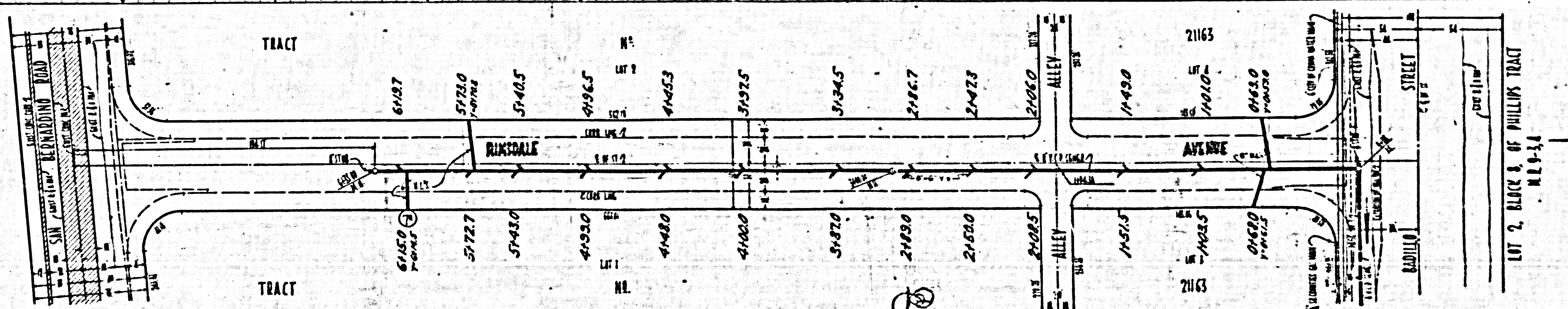
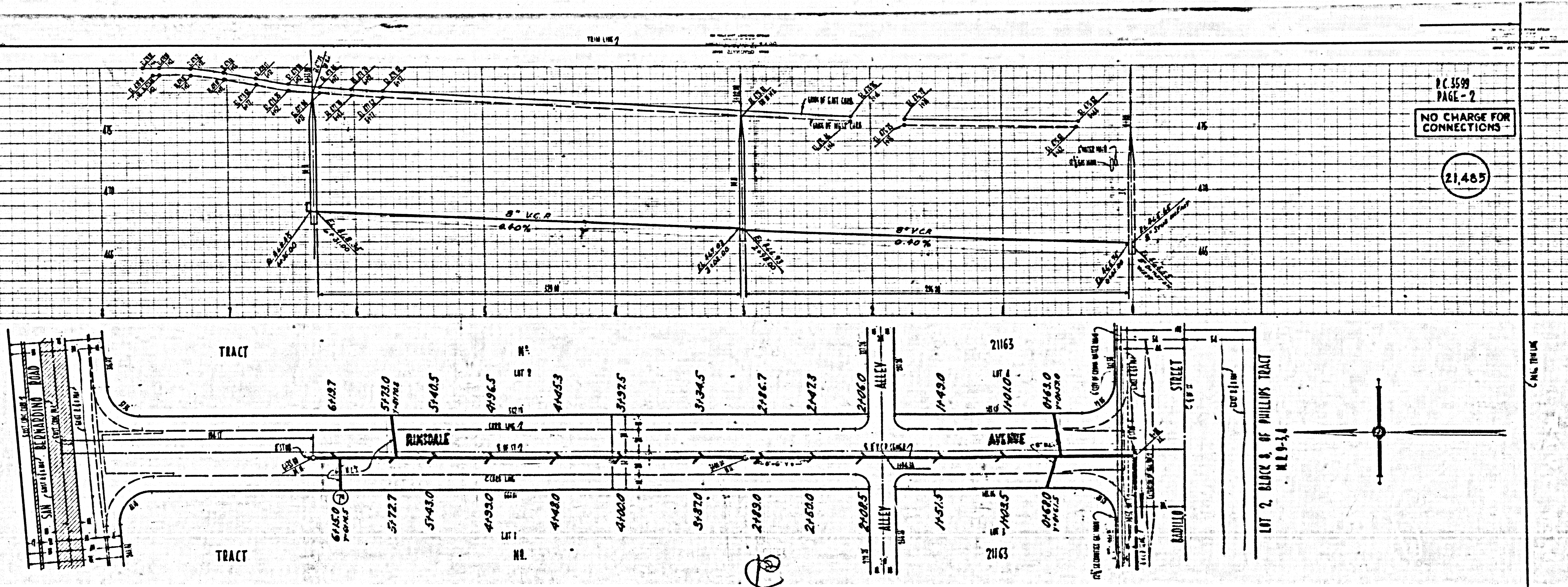
CHARGE FOR REVISIONS

1,485

P.C. 3599
 TRACT NO. 21163
 SHEET 1 OF 1
 JULY 1955
 WALSH & ASSOCIATES INC.

P.C. 3288

RL

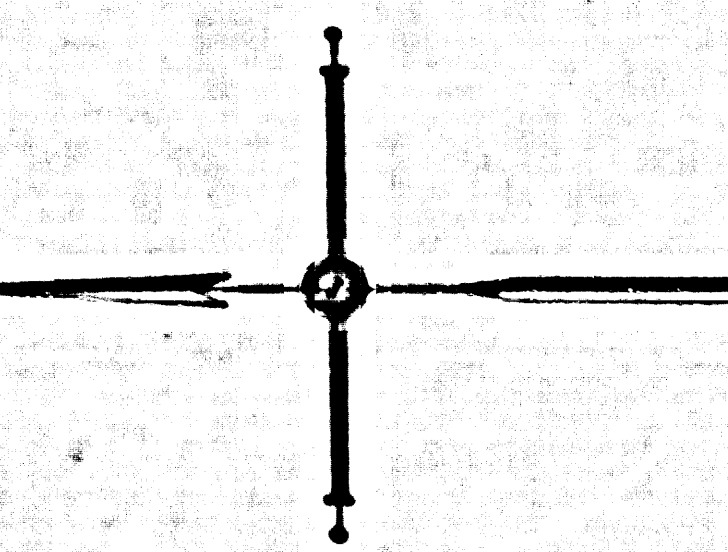


P.C. 3599
PAGE - 2

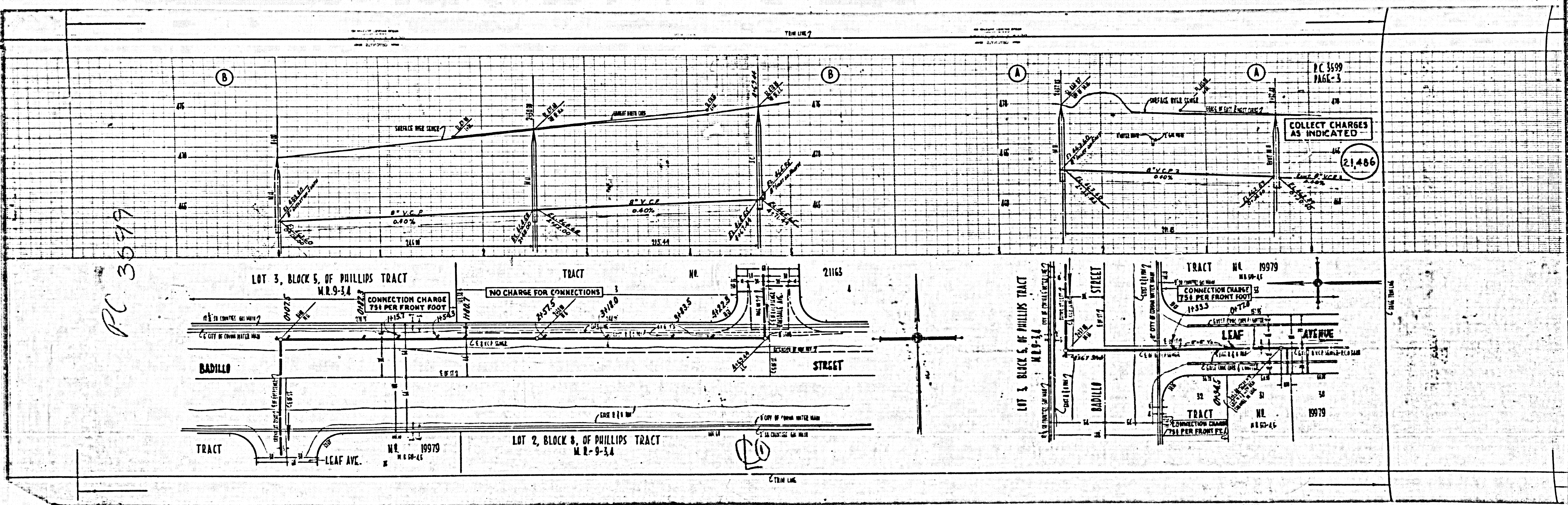
NO CHARGE FOR CONNECTIONS

21,465

LOT 2, BLOCK A, OF PHILLIPS TRACT
M.E.P. 34



PC 36979



PC 3699
PAGE-3

COLLECT CHARGES
AS INDICATED
21,486

LOT 3, BLOCK 5, OF PHILLIPS TRACT
M.R. 9-34

NO CHARGE FOR CONNECTIONS

CONNECTION CHARGE
75¢ PER FRONT FOOT

LOT 2, BLOCK 8, OF PHILLIPS TRACT
M.R. 9-34

LOT 3, BLOCK 5, OF PHILLIPS TRACT
M.R. 9-34

TRACT NO. 19979

CONNECTION CHARGE
75¢ PER FRONT FOOT

TRACT NO. 19979