

WHITTIER BLDG. DIST. No. 11

NOTE:

- Provide stakes on the property lines or property lines produced at right angles to the cover line of the center line of each manhole.
- No representative of the County Engineer will survey or layout any portion of the work.
- The owner or his authorized representative shall furnish the County Engineer with grade sheets and stations for all house laterals and Y branches and shall provide stakes for them at their proper locations with stationing plainly marked. Any change in location shall be requested in writing by the owner or his representative.
- No revisions shall be made to these plans without the approval of the County Engineer.
1. Use standard manhole frames and covers, S-2-117.
 2. Use standard strength pipe.
 3. Use cement mortar for all vitrified clay pipe joints.
 4. Resurface all trench within paved area to meet L.A. County Road Dept. or California State Highway Dept. requirements in accordance with permit.
 5. Excavate four feet of sewer at points of interference with poles, S-2-119.
 6. House laterals to be constructed with laterals of property line _____ feet below curb grade except as noted.
 7. All structures shall be brick cover structures, S-2-104.
 8. For allowable leakage test, see Formula No. _____, Spec's, Sec. 81.
 9. Manhole tops in unimproved Right-of-Way to be 6" above finish grade.

PROFILE, ALIGNMENT AND GRADE OF
SANITARY SEWERS
TO BE CONSTRUCTED IN

TRACT NO. 20826

PRIVATE CONTRACT NO. 3600
W. S. 34
1 SHEET

Scale: VERT. 1"=4'
HORIZ. 1"=40'
JUNE 1955
PREPARED IN THE OFFICE OF
KEMMERER ENGINEERING CO. INC.

James C. Kemmerer
Eng. C. S. No. 8242

FOR LEGEND SEE PLAN NO. S-2-64

NOTE:
Grades to which this improvement is to be constructed are shown on plans and profiles. Grade points for top of curb, center line of street, or center line of alley are shown by circles on profiles. All points between designated points the grade shall be established as on to conform to a straight line drawn between said designated points.

Elevations are in feet above U.S.C. & G.S. mean level datum of 1929.

The drawing and the data hereon are hereby made a part of the specifications.

Work shall be constructed according to specifications on file in the office of the County Engineer and shall be proceeded only in the presence of the County Engineer.

Before work can be started, the contractor must obtain a permit to construct in County streets from the L.A. County Road Dept., 100 W. 2nd St., and make a deposit with the County Engineer, Room 316, 150 S. Broadway sufficient to cover the cost of construction inspection and record plans.

Approval of this plan by the County of Los Angeles does not constitute a representation as to the necessity of the location of or the existence or maintenance of any underground utility, pipe or structure within the limits of this project. This note applies to all sheets.

If work is to be done in a State Highway, a permit must be obtained from the State of California, Division of Highways, 120 South Spring Street.

COUNTY OF LOS ANGELES, CALIFORNIA

Approved, John A. Lambie, County Engineer
Approved, A. M. Rove
City Eng'g. Div. No. 548 DIST. NO. _____

A. P. Collins Supervisor
A. M. Rove City Engineer

Checked by *R. K. ...* 1-16-56
Office of County Engineer, Dep. C. S. No. 2260.

PAGE 1
P.C. 3600

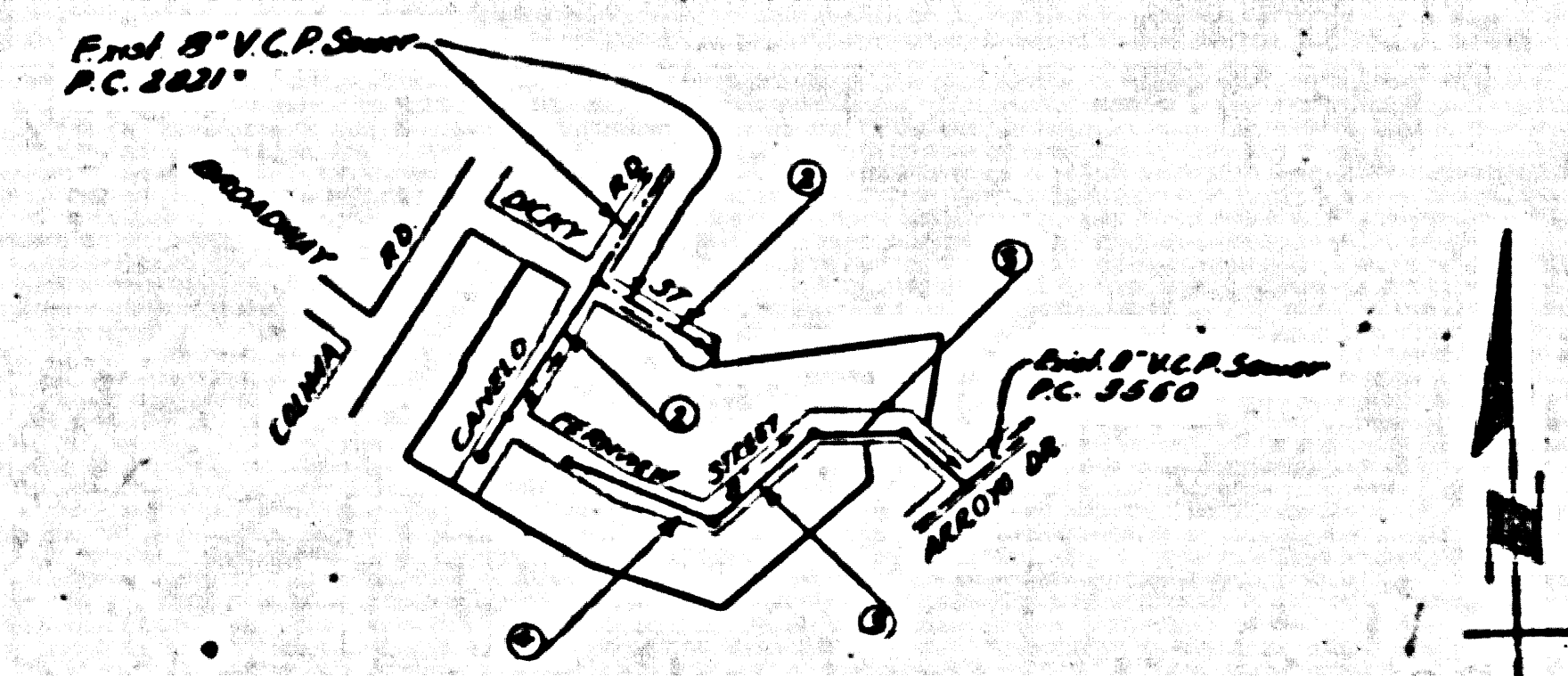
22686

(4)

TRACT NO. 20826
SHEET 1 OF 1 SHEET

P.C. 3600
20826

B.M. 51 1896 Elev. 128.95
1.77 in center of curb 18' 8" W of
E produced of VALLEYVIEW AVE. and 80' S
N of S of BROADWAY



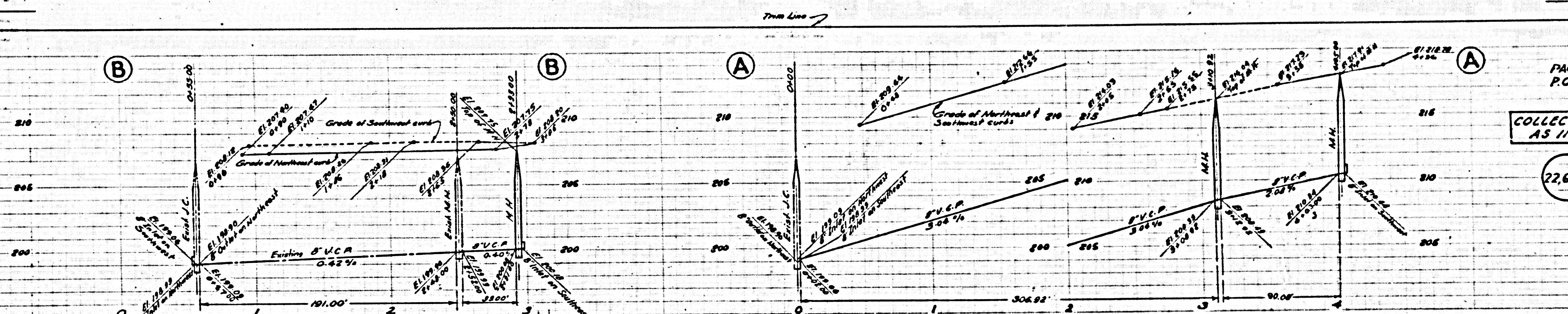
INDEX MAP
Scale: 1"=400' P.C. 3600

SHEET NO.	PAGES
1	1-4

COLLECT CHARGES
AS INDICATED
D. W. ...

Checked 5-22-56 *M. ...*

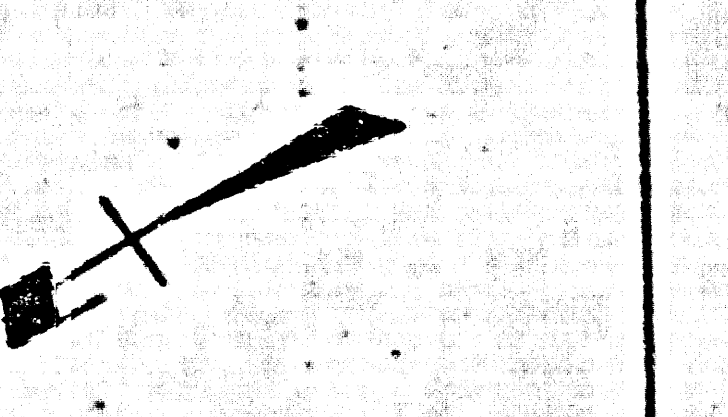
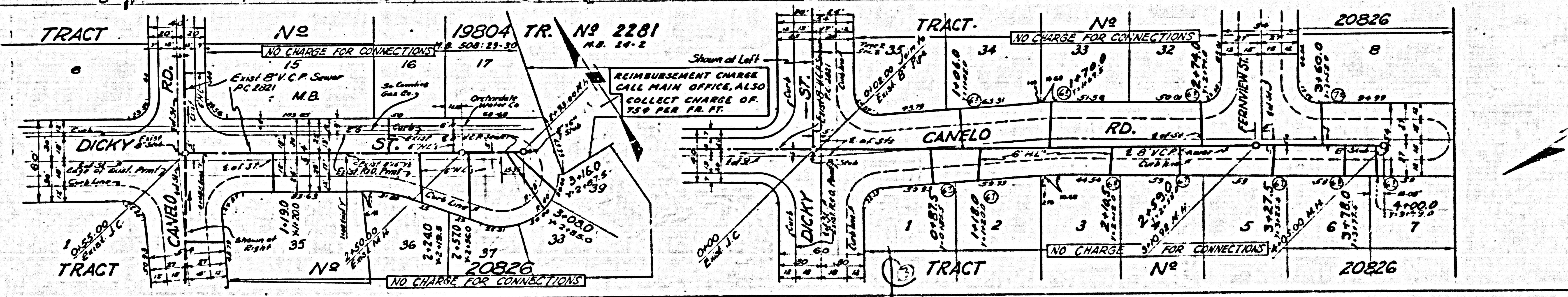
CHARGES	INDICATED
2	
500	

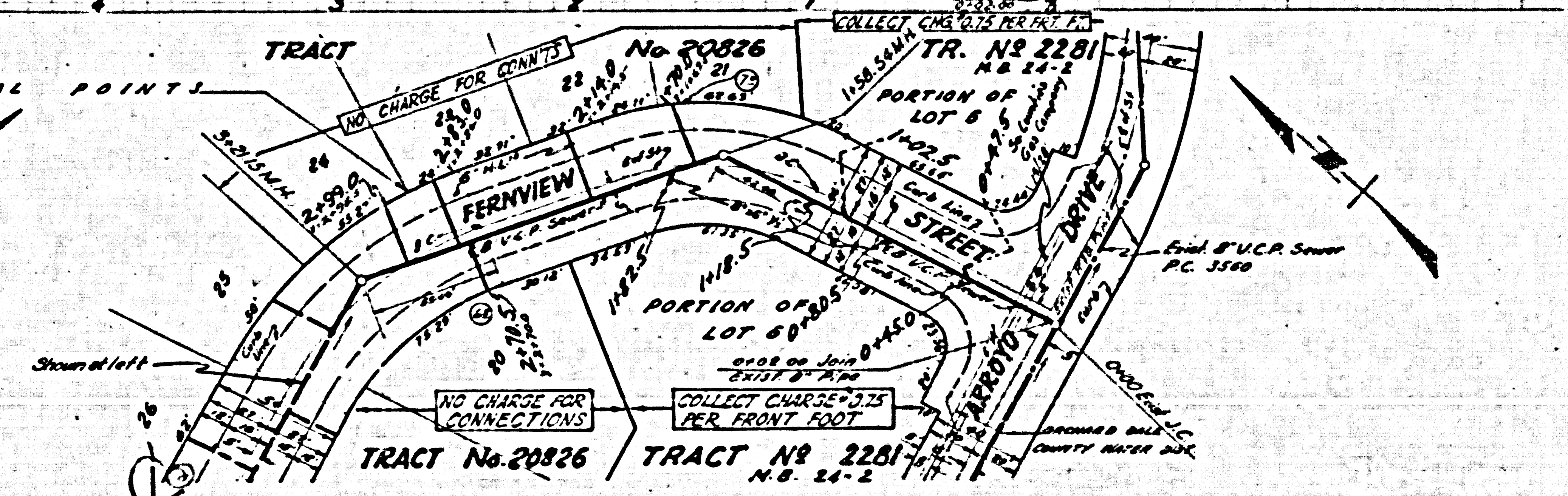
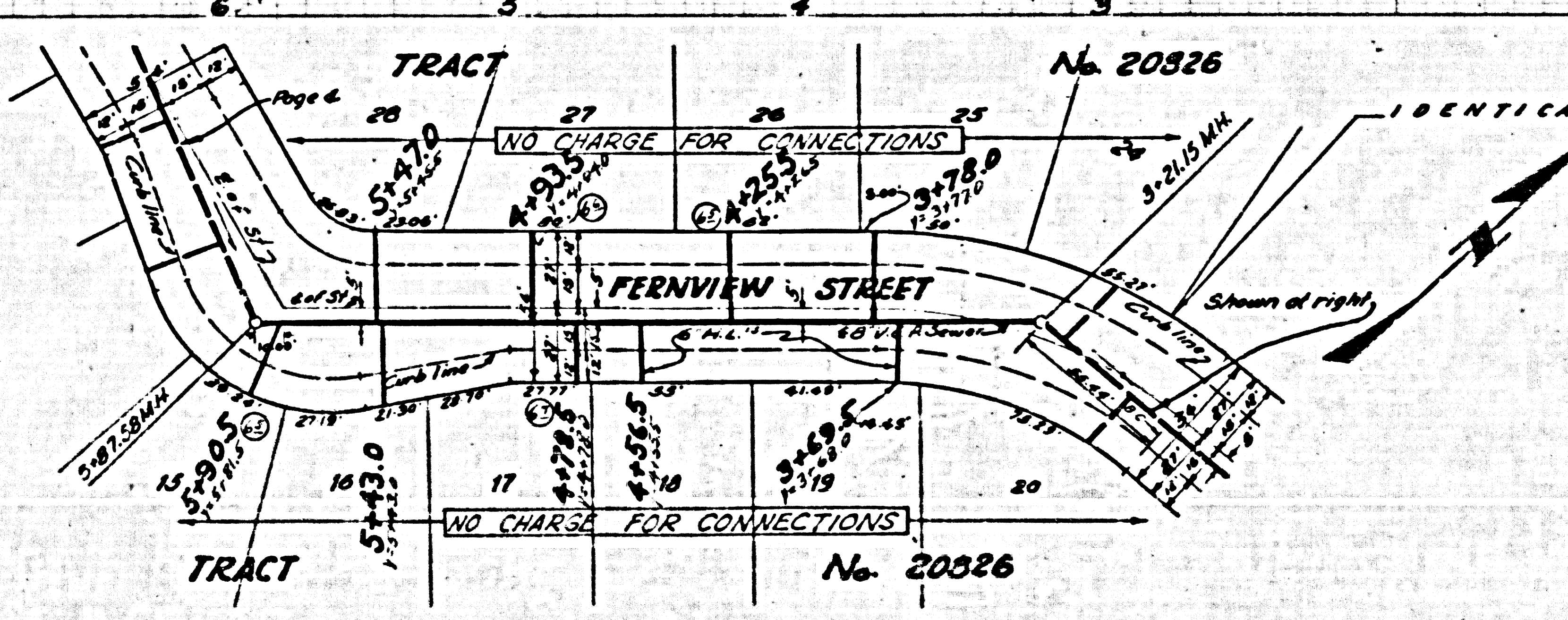
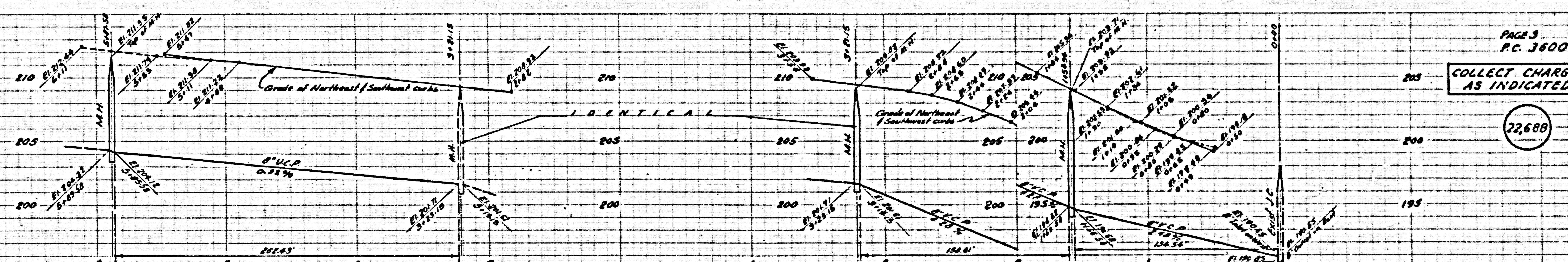


PAGE 2
P.C. 3600

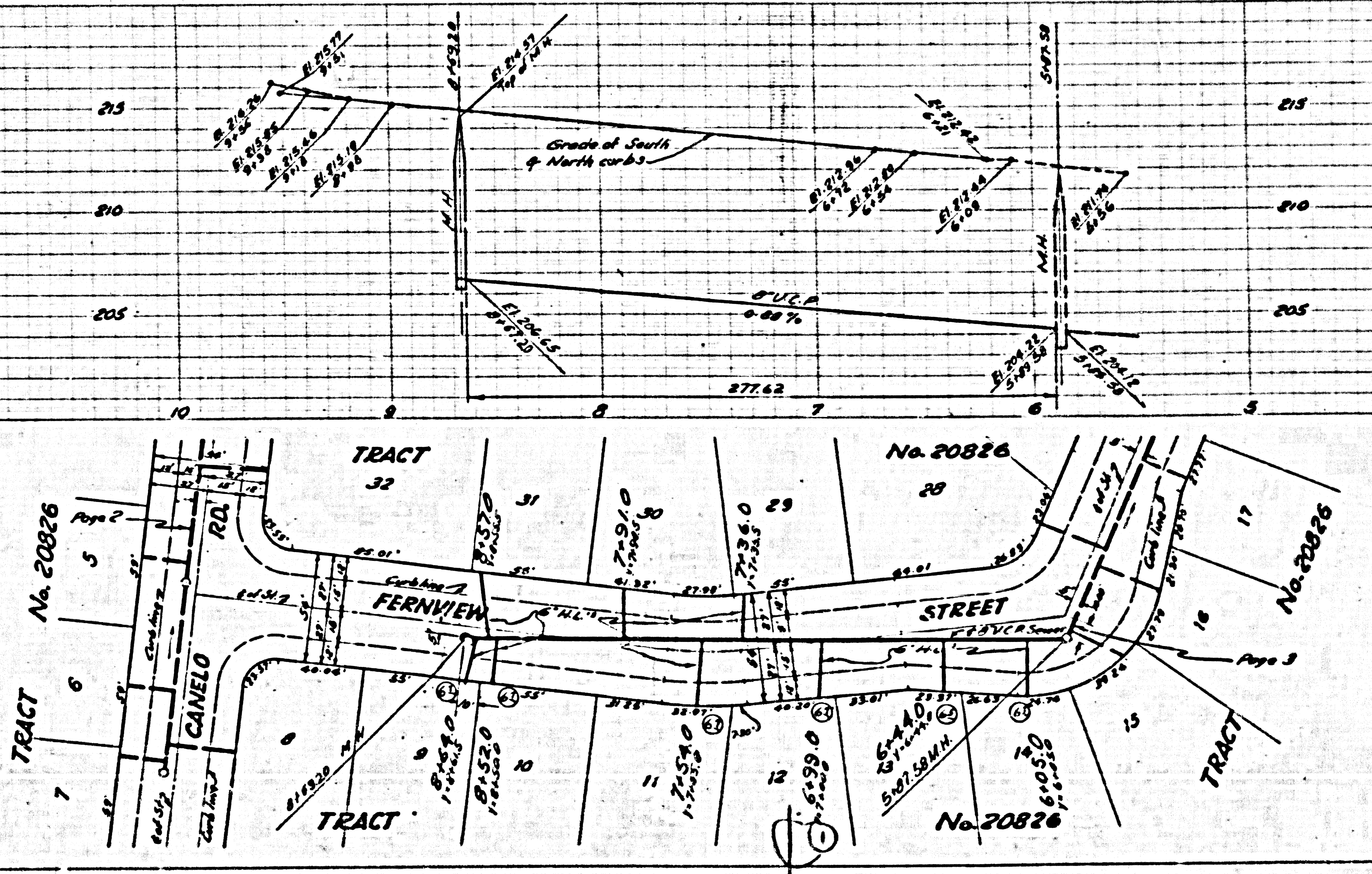
COLLECT CHARGES
AS INDICATED

22,687





PC 3600



PAGE 4
PC 3600

NO CHARGE FOR
CONNECTIONS

22,689