

Trim Line
PUENTE BLDG. DIST. NO. 2

B.M. C.S.B.M. 14-5 A C.S. Monument at the Northwest corner of Merced St. & Rush Ave. 15' W of S. Merced St. 4.100 N of S. Rush Ave. C.S.F.B. 1979-206 Elevation 244.644

NOTE:
 Provide stakes on the property lines or property lines produced at right angles to the cover line of the center line of each manhole.
 No representative of the County Engineer will survey or layout any portion of the work.
 The owner or his authorized representative shall furnish the County Engineer with grade sheets and stations for all house laterals and Y branches and shall provide stakes for them at their proper locations with stationing plainly marked. Any change in location shall be requested in writing by the owner or his representative.
 No revisions shall be made in these plans without the approval of the County Engineer.

1. Use standard manhole frames and covers, S-117, except as noted.
2. Use standard strength pipe except as noted.
3. Use joint compound for all vitrified clay pipe joints, Spc. 1, Sec. 21.
4. Surface of all trench within paved area to meet L.A. County Road Dept. or California State Highway Dept. requirements in accordance with manual.
5. Excavate four feet of cover at points of interference with poles, S-119.
6. House laterals to be constructed with inverts at property line 6 feet below grade of center-line of street, except as noted.
7. All structures shall be brick sewer structures, S-104, except as noted.
8. For allowable leakage test, see Formula No. 2, Spc. 1, Sec. 21.
9. Minimum type or improved-type-of-way to be level with main grade.

PC. 3603
PAGE 1

**TRACTION AND GRADE OF
 SANITARY SEWERS
 TO BE CONSTRUCTED IN
 TRACT NO. 20120**

PRIVATE CONTRACT NO. 5603
 W. S. 37
 ONE SHEET ONLY
 JULY, 1958

M. W. FINLEY

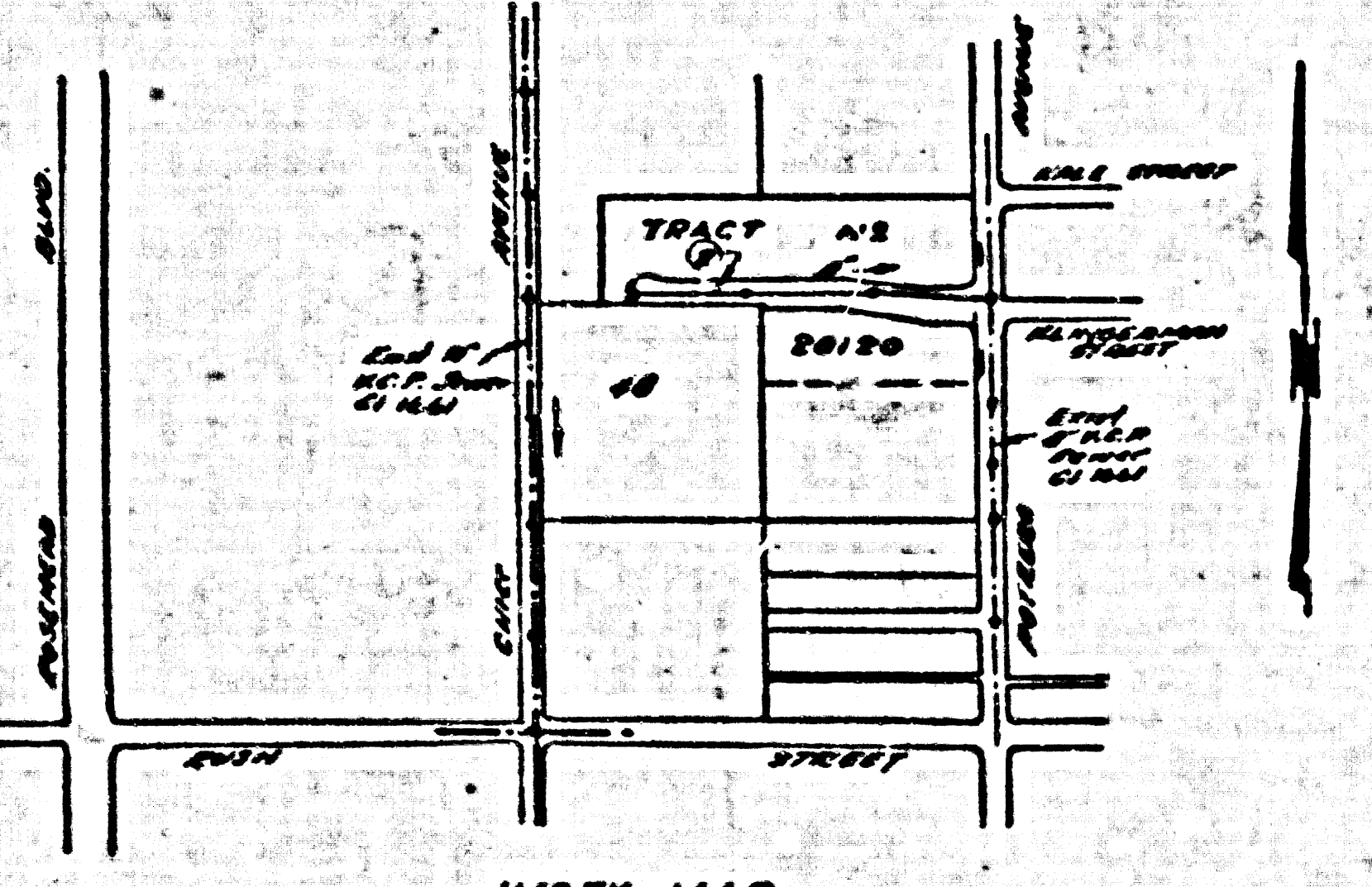
Sam W. Moore No. 2157
 FOR LEGEND SEE PLAN NO. S-14

21,965

INDEX TABLE	
SHEETS	PAGES
1	1-2

CONNECTION CHARGES AS INDICATED
L. Carter 11-29-58

APPROVED INDUSTRIAL WASTE DIVISION
By: [Signature]



INDEX MAP
 SCALE 1/400'
 PC. 3603

NOTE:
 Grades to which this improvement is to be constructed are shown on plans and profiles. Grade points for top of curb, center line of street, or center line of alley are shown by circles as profiles. At all points between designated points the grade shall be established so as to conform to a straight line between said designated points.
 Structures are to face above U.S.C.S. datum or mean sea level.
 This drawing and the data hereon are hereby made a part of the specifications.
 Work shall be constructed according to specifications on file in the office of the County Engineer and shall be prosecuted only in the presence of the County Engineer.
 Before work can be started, the contractor must obtain a permit to excavate in County streets from the L.A. County Road Dept., 106 W. 2nd St. and make a deposit with the County Engineer, Room 208, 2nd Avenue Building, 215 S. Broadway, sufficient to cover the cost of construction inspection and record plans.
 Approval of this plan by the County of Los Angeles does not constitute a representation as to the accuracy of the location of or the existence or non-existence of any underground utility, pipe, or structure within the limits of this project. This note applies to all sheets.
 If work is to be done in a State Highway, a permit must be obtained from the State of California, Division of Highways, 128 South Spring Street.
COUNTY OF LOS ANGELES, CALIFORNIA
 Approved, *A. M. Evans* County Engineer
 Approved, *A. P. Collins* Sanitation Engineer
 Dated at Los Angeles, California, 11-29-58
 Office of County Engineer, Box 6 & No. 796-D.

checked 12-20-55 [Signature]

Trim Line

PC. 3603 PAGE 1 TRACT NO. 20120

ARGES ED

966

