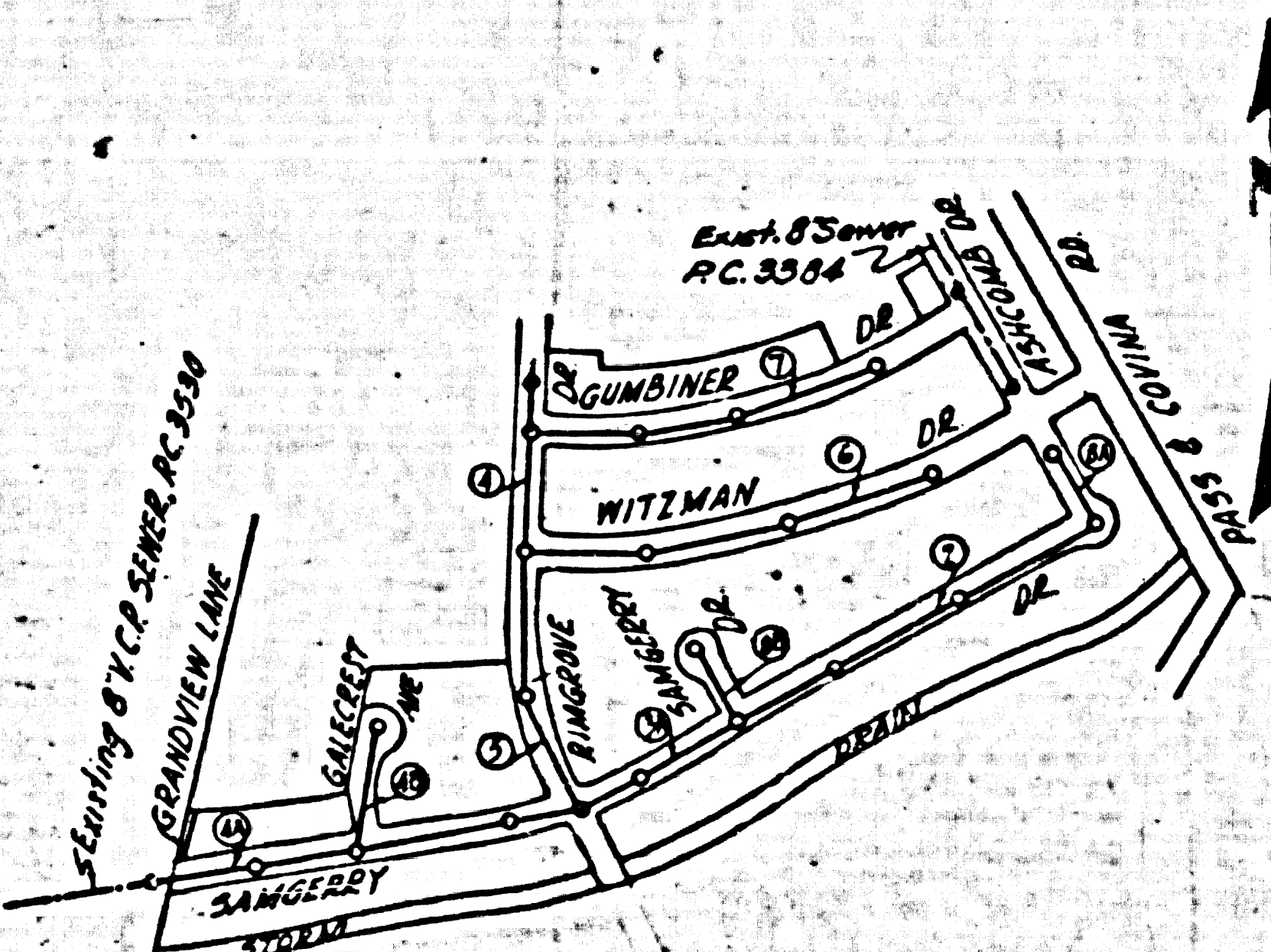


PC.3604
PAGE 2

NO CHARGE
FOR CONNECTION

21,460

BNSG 1014 EL. 321.027
L & B. Nail 5' Curb at Driveway to Ho. #876
Glendale Ave 275 S. 8.150' at 4' Intersect
Elliot Ave @ Glendale Ave 1.30'E. Reg. of Ch.



INDEX MAP
PC. 3604
SCALE: 1" = 400'
TRACT NO. 19298

PUEENTE BLDG DIST. NO 2

NOTE:

Provide stakes on the property lines or property lines produced at right angles to the cover line of the center line of each manhole.

No representative of the County Engineer will survey or layout any portion of the work. The owner or his authorized representative shall furnish the County Engineer with grade sheets and stationing for all boxes laterals and Y branches and shall provide stakes for them at their proper locations with stationing plainly marked. Any change in location shall be requested in writing by the owner or his representative.

No revisions shall be made in these plans without the approval of the County Engineer.

1. Use standard manhole frames and covers, S-a-117.
2. Use standard strength pipe.
3. Use standard manhole for all ventilated dry pipe joints.
4. Surface all trench within paved area to meet L.A. County Road Dept. or California State Highway Dept. requirements in accordance with per. A.
5. Excavate four feet of cover at points of interference with poles, S-a-119.
6. House laterals to be constructed with inverts of property line _____ feet below curb grade.
7. All structures shall be brick cover structures, S-a-104.
8. For allowable leakage test, see Formula No. _____ Spec's., Sec. 51.
- 9.

SHEET	PAGES
1	1-2
2	6-8

COLLECT CHARGES
AS INDICATED
Substation 9-155

TRIM LINE 7

TRIM LINE

PC.3604
PAGE 1

21,459

TRACT NO. 19298

PROFILE ALIGNMENT AND GRADE OF
SANITARY SEWERS
TO BE CONSTRUCTED IN
TRACT NO. 19298

PRIVATE CONTRACT NO. 3604
W. S. 38
TWO SHEETS

Scale: VERT. 1" = 4' HORIZ. 1" = 40' JULY 1955
PREPARED IN THE OFFICES OF
HAROLD L. JOHNSON
C.E. No. 2582

FOR LEGEND SEE PLAN NO. S-a-44

NOTE:

Grades to which this improvement is to be constructed are shown on plans and profiles. Grade points for top of curb, inside line of street, or center line of alleys are shown by circles on profiles. All other points between designated points the grade shall be established so as to conform to a straight line drawn between said designated points.

Stations are in feet above U.S.G.S. datum or mean sea level.

The drawing and the data hereon are hereby made a part of the specifications.

Work shall be constructed according to specifications on file in the office of the County Engineer and shall be prosecuted only in the presence of the County Engineer.

Before work can be started, the contractor must obtain a permit to connect to County streets from the L.A. County East Dept., 104 W. 2nd St. and make a deposit with the County Engineer, Room 318, 255 So. Broadway, sufficient to cover the cost of construction inspection and record plans.

Approval of this plan by the County of Los Angeles does not constitute a representation as to the accuracy of the location of or the existence or non-existence of any underground utility, pipe, or structure within the limits of this project. This note applies to all sheets.

If work is to be done in a 5-1/2 Highway, a permit must be obtained from the State of California, Division of Highways, 120 South Spring Street.

COUNTY OF LOS ANGELES, CALIFORNIA
Approved, William J. Fox, County Engineer
Approved, A. M. Ross
C.E. No. 1244 DIST. NO. 12

Checked by: J. K. Onda 7-1-55
Office of County Engineer, Rm. C. 6, No. 340.

Checked 9-28-55 W. J. Fox

PC 3604
PAGE 3

NO CHARGE FOR CONNECTION

21,461

410

405

PC 3604
PAGE 2

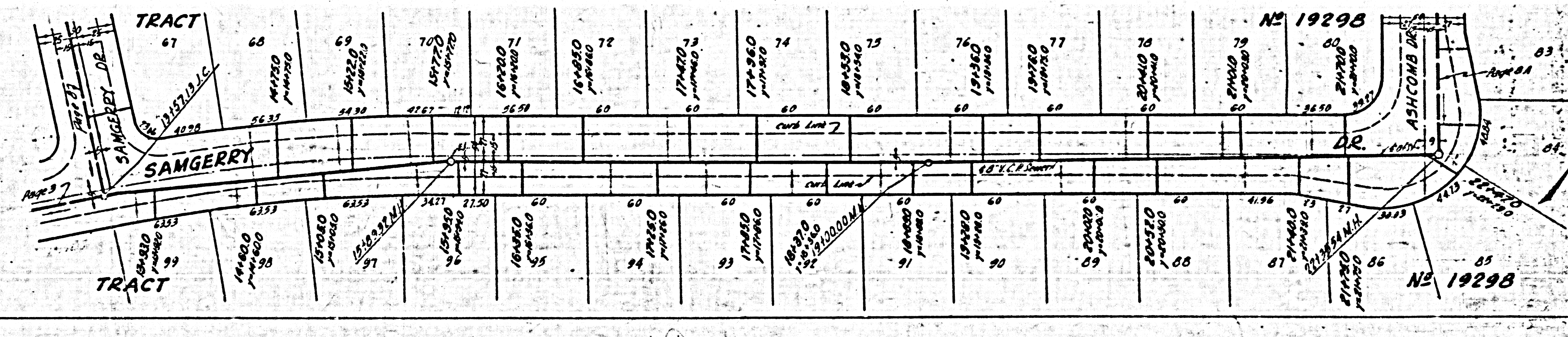
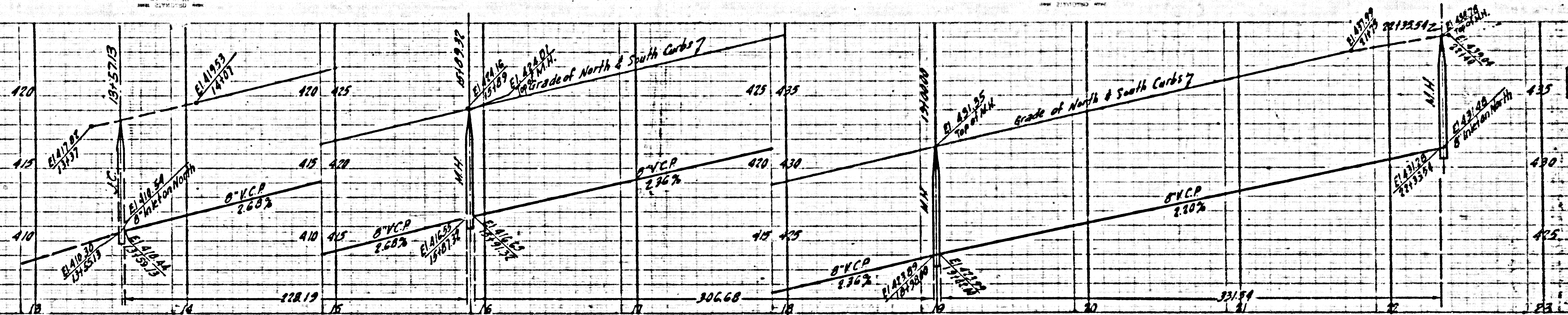
NO CHARGE FOR CONNECTION

21,460

435

430

425

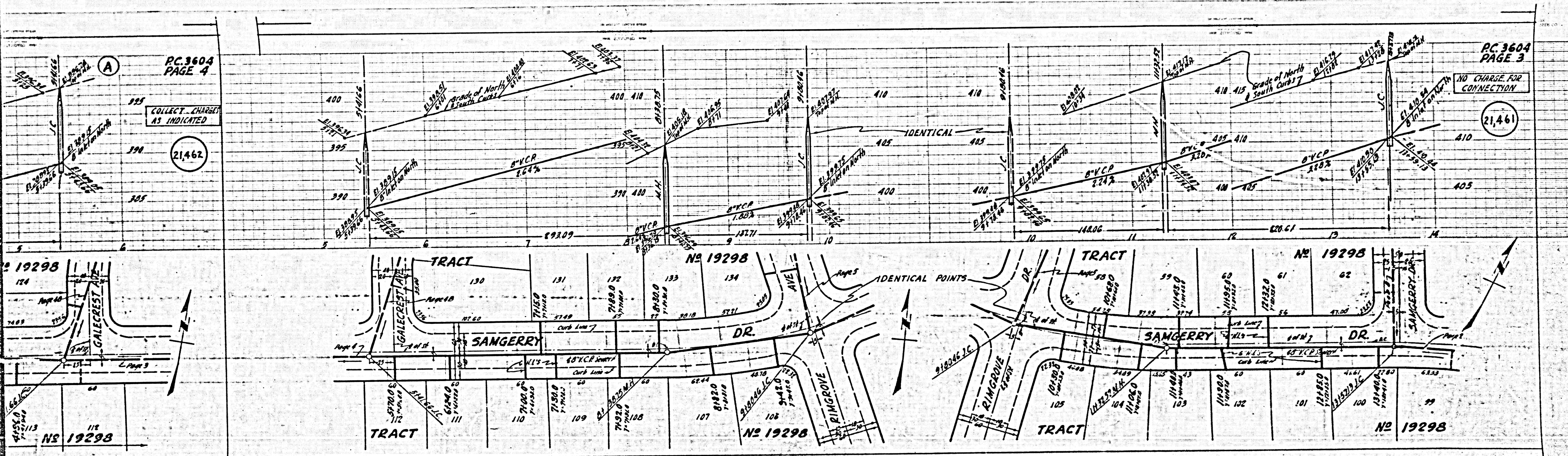


19298

19298

19298

24



PC.3604
PAGE 4

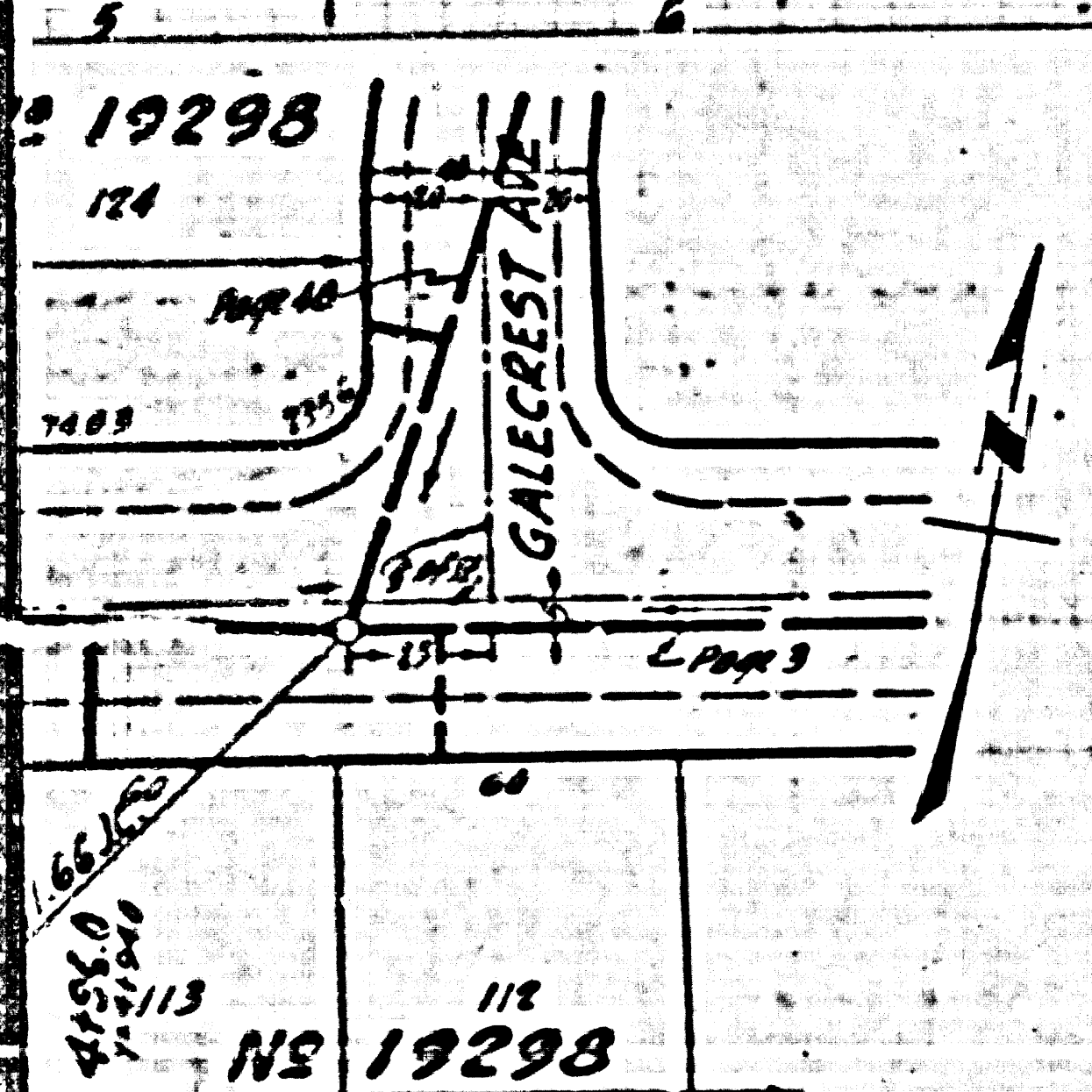
PC.3604
PAGE 3

COLLECT CHARGES
AS INDICATED

NO CHARGE FOR
CONNECTION

21,462

21,461

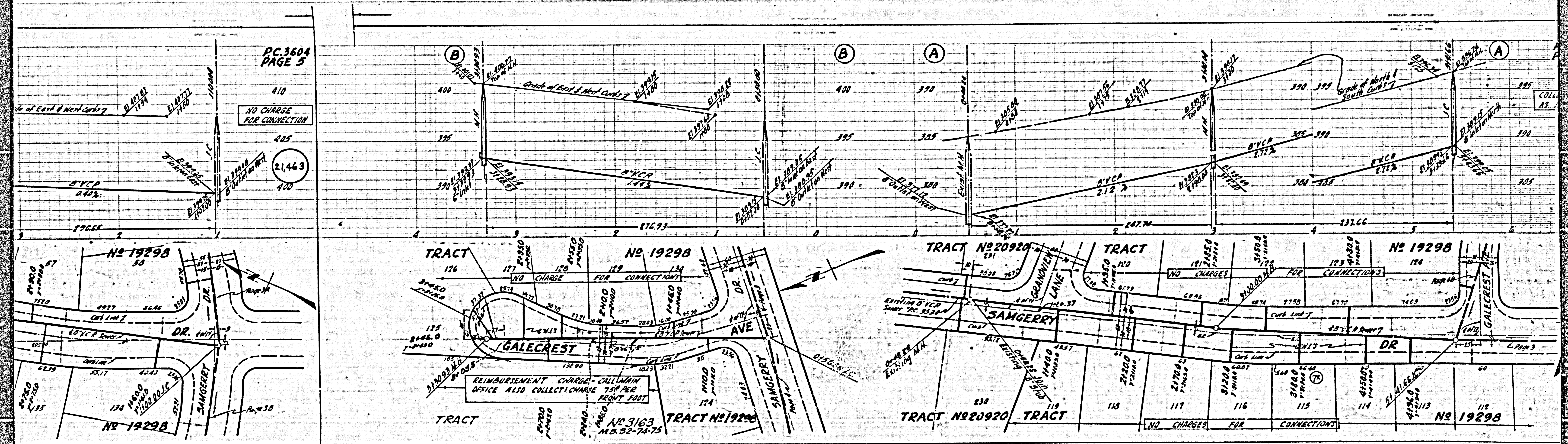


(3)

PC 3604
PAGE 5

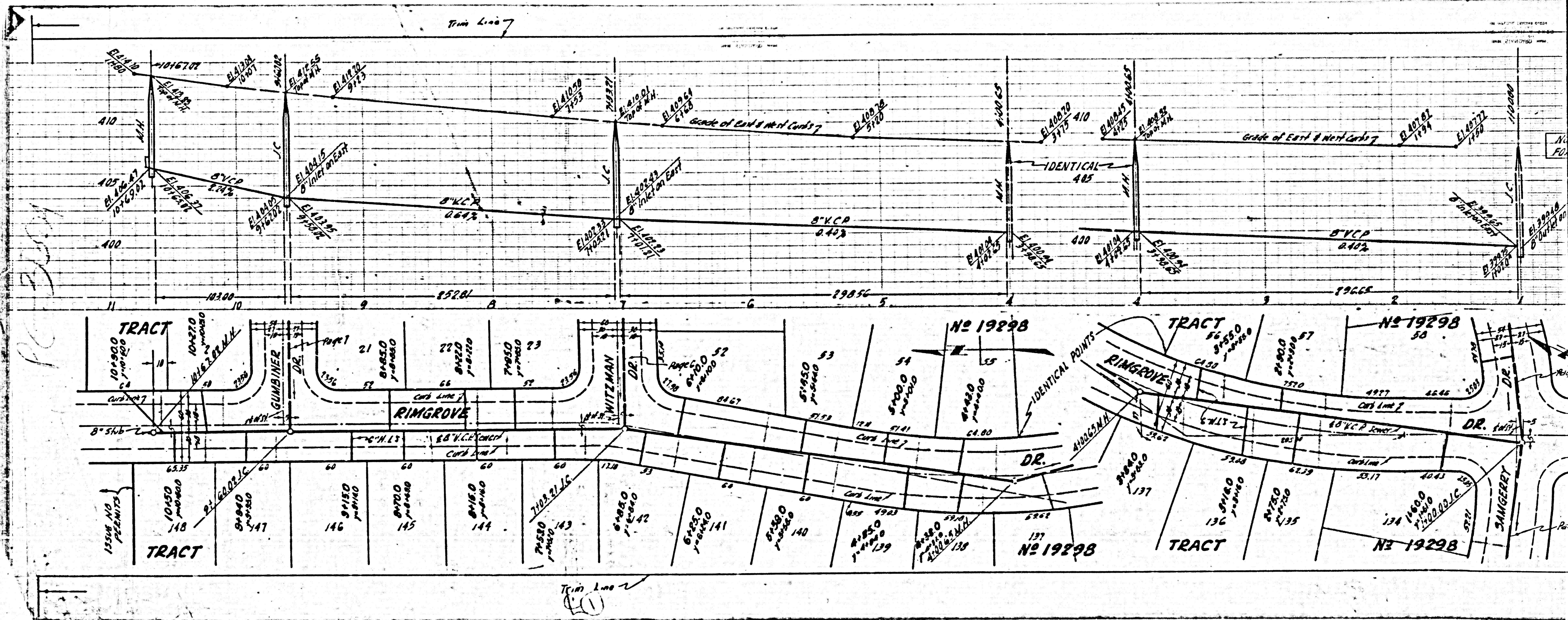
NO CHARGE
FOR CONNECTION

21,463



REIMBURSEMENT CHARGE - CALL MAIN
OFFICE ALSO COLLECT CHARGE 75¢ PER
FEET FOOT

10



CHARGES
NOTED

21,465

NO CHARGE FOR
CONNECTION

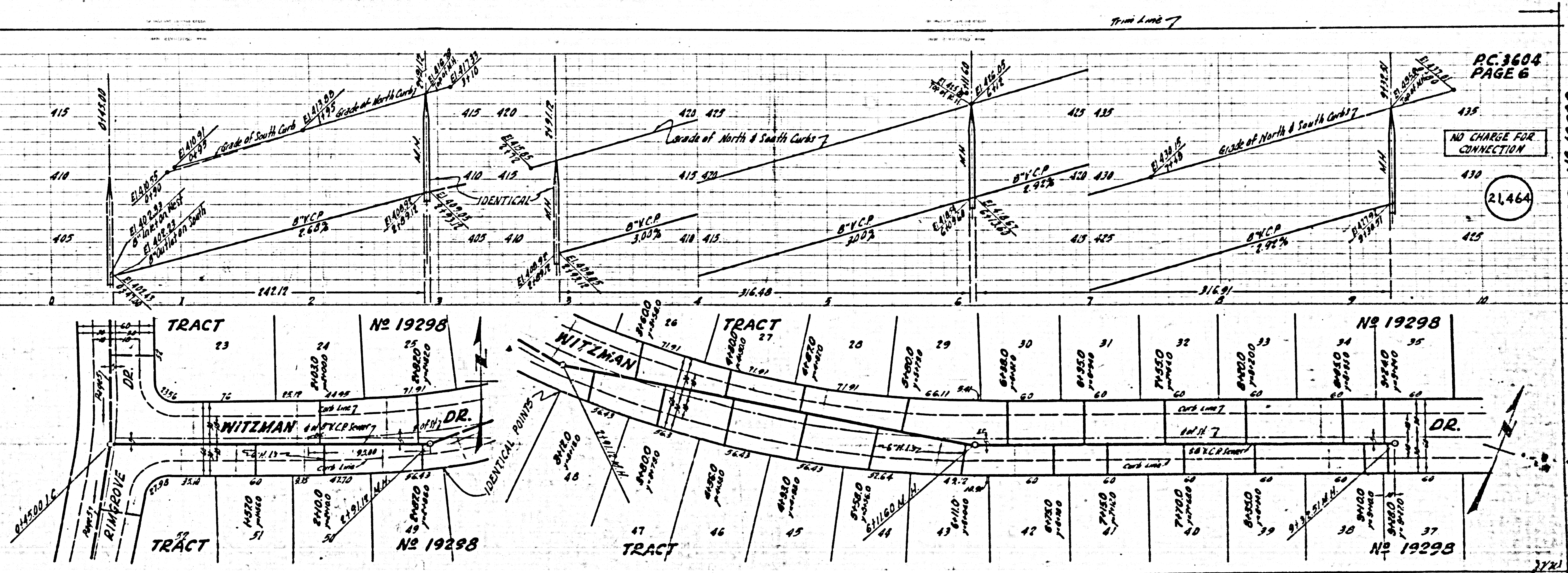
21,464

②

TRACT NO 19298

PC 3604

W.C. CREO

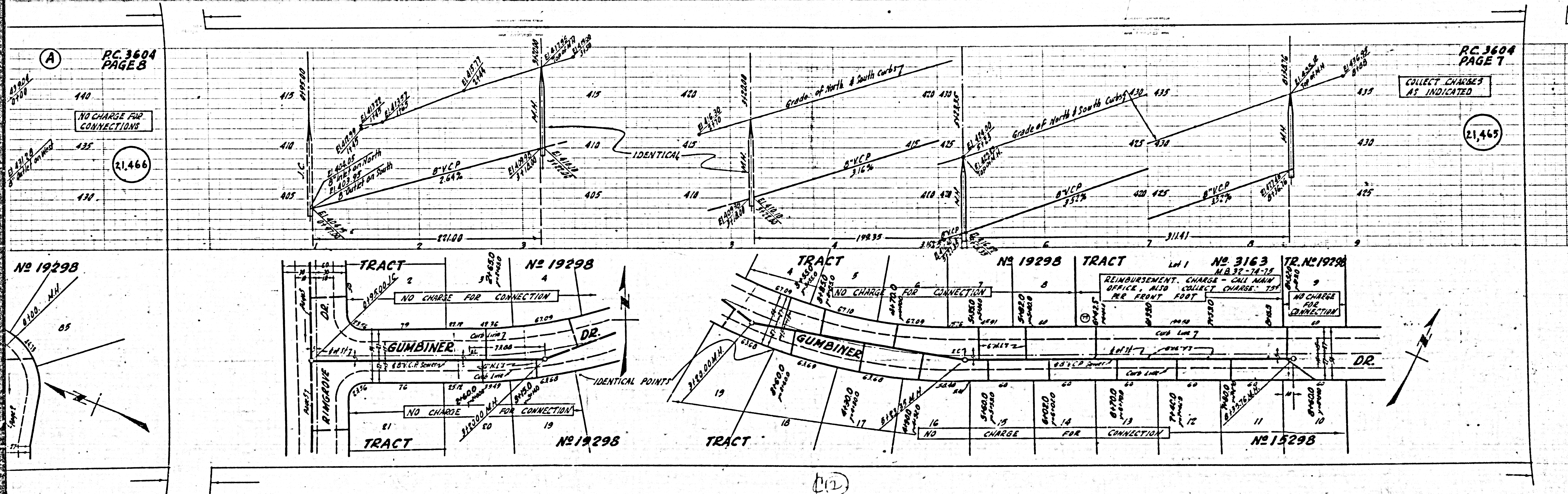


①

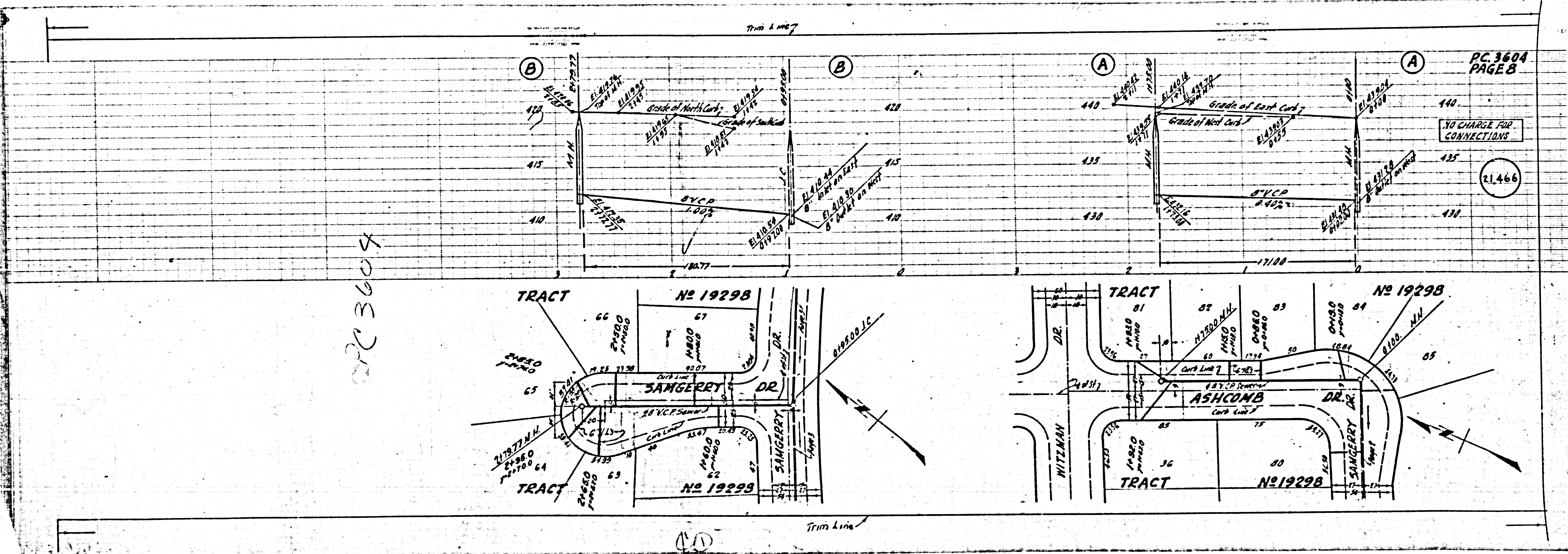
Trim Line

PC. 3604
PAGE 8

PC. 3604
PAGE 7



PC 3604



PC 3604
PAGE 8

NO CHARGE FOR
CONNECTIONS

21.466

(11)