

A

A

PROFILE, ALIGNMENT AND GRADE OF
SANITARY SEWERS
 TO BE CONSTRUCTED FOR
HOUSING RELOCATION-MIRA LOMA
 PRIVATE CONTRACT NO. 3605
 CAPITAL PROJECT NO. 867602
 ONE SHEET

VERT: 1"=4'
 SCALE: HORIZ: 1"=40' JULY 1955
 WILLIAM J. FOX COUNTY ENGINEER

SUBMITTED B.H. Hughes APPROVED A.P. Collins
 ASSISTANT SAN. ENGINEER SANITATION ENGINEER

APPROVED C.W. Lee
 BUSINESS MGR. SHERIFF'S OFFICE

FOR LEGEND
 SEE PLAN NO. S-3-G4

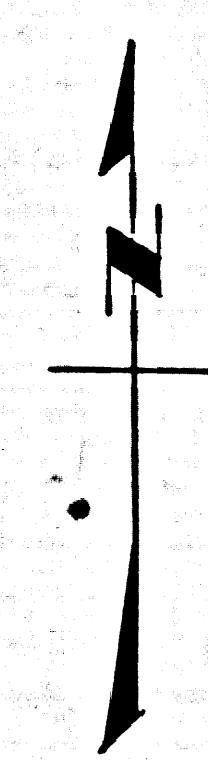
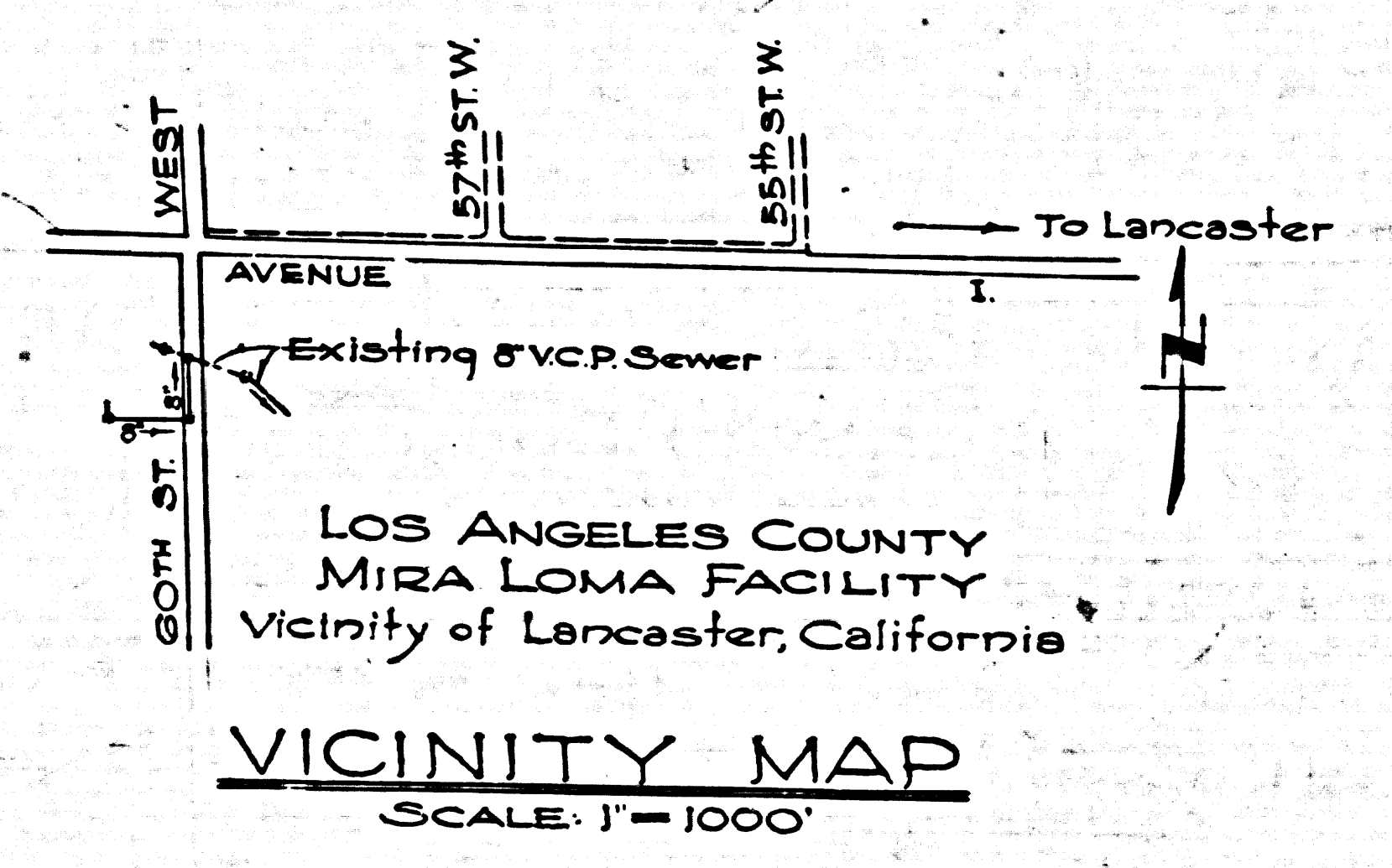
NOTE:
 GRADES TO WHICH THIS IMPROVEMENT IS TO BE CONSTRUCTED ARE SHOWN ON PLANS AND PROFILES. GRADE POINTS FOR TOP OF CURB, CENTER LINE OF STREET OR CENTER LINE OF ALLEY ARE SHOWN BY CIRCLES ON PROFILES. AT ALL POINTS BETWEEN DESIGNATED POINTS THE GRADE SHALL BE ESTABLISHED SO AS TO CONFORM TO A STRAIGHT DRAWN BETWEEN SAID DESIGNATED POINTS.
 ELEVATIONS ARE IN FEET ABOVE U.S.G.S. DATUM OR MEAN SEA LEVEL.
 UNIT PRICES FOR ADDITIONAL WORK WHICH MAY BE REQUIRED BUT WHICH CANNOT BE ASCERTAINED IN ADVANCE, SHALL BE SUBMITTED IN THE PROPOSAL.
 THIS DRAWING AND THE DATA HEREON ARE HEREBY MADE A PART OF THE SPECIFICATIONS.

REFERENCES			
W.S.	71	DESIGNED	LEE
A.B.		TRACED	LEE
F.B.	1570	CHECKED	SCOTT
			JULY 1955
			JULY 1955
			JULY 1955

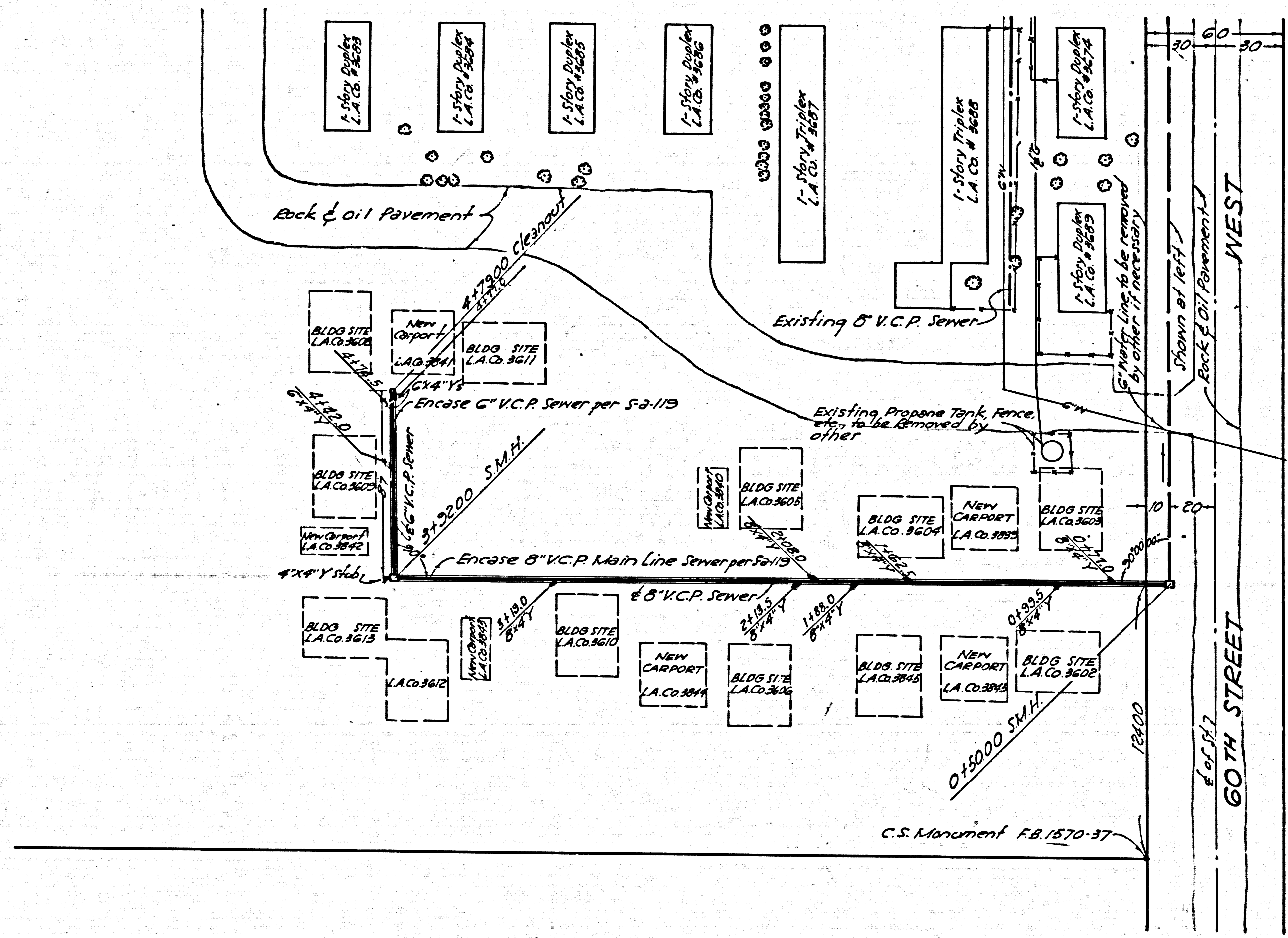
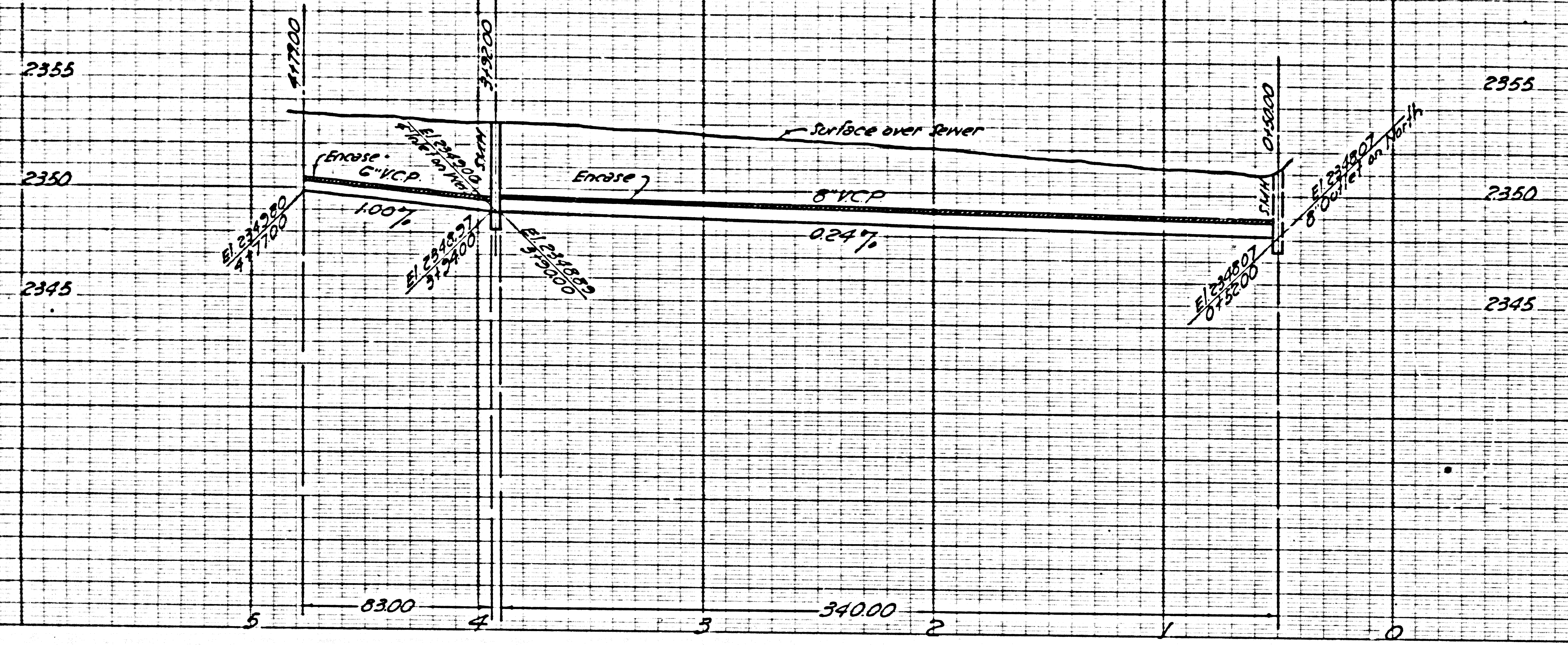
Page 1

21,679

USE STANDARD STRENGTH PIPE
 USE C.P.I. NO. 2 FOR ALL VITRIFIED CLAY PIPE JOINTS
 ALL STRUCTURES SHALL BE SHALLOW MANHOLE STRUCTURES AS PER PLAN NO. S-3-130.
 USE MANHOLE FRAMES AND COVERS AS PER PLAN NO. S-3-131.
 RESURFACE TRENCH WITHIN PAVED AREA WITH PREMIX ROCK AND OIL 3 INCHES IN THICKNESS
 USE FORMULA NO. 2 SEC. 31 OF SPECIFICATIONS TO COMPUTE ALLOWABLE LEAKAGE. MAKE LEAKAGE TEST BEFORE ENCASING.
 ENCASE ALL 8" VITRIFIED CLAY PIPE AND 6" VITRIFIED CLAY PIPE AS PER PLAN NO. S-3-119.



checked 11-3-55 W. L. Lavan



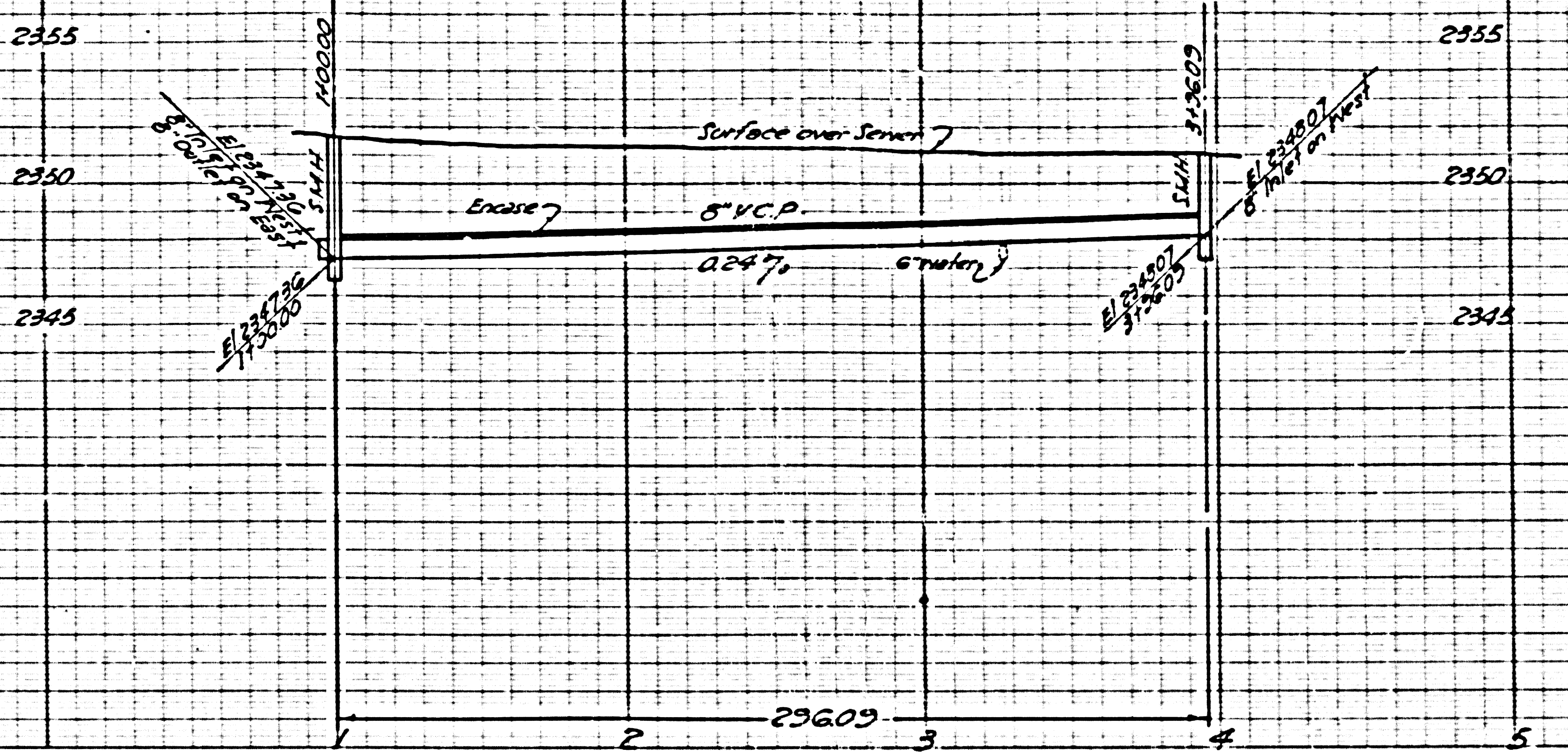
A

A

Trim Line

(B)

(B)



P.C. 3605
Page 2

21,680

(B)

(B)

