

BM 8050-A 5.25' 31658  
 Triangulation 4.00' in  
 concrete post 35' East of S  
 Dennis Cor. of 207 North of S  
 Grove St.

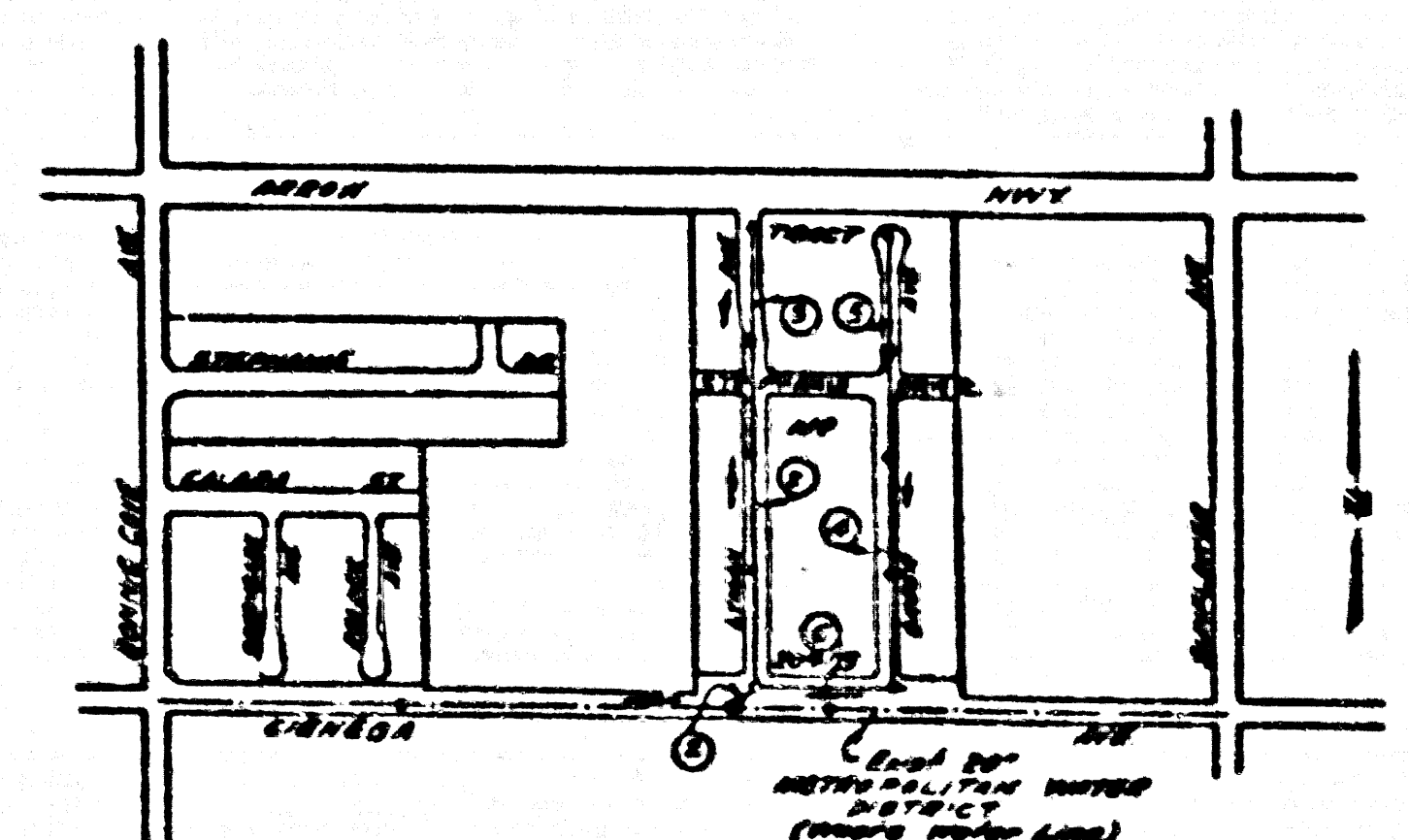
INDEX TABLE	
SHEETS	PAGES
1	1-3
2	4-6
3	7-10

COLLECT CHANGES  
 AS INDICATED  
 J. Curtis 9-26-55

Checked 12-12-55 W. Mann

**SAN DIMAS BLDG. DIST. NO 10**

- NOTE: Provide stakes on the property lines or property lines produced at right angles to the corner line of the center line of each manhole.
- No representative of the County Engineer will survey or layout any portion of the work.
- The owner or his authorized representative shall furnish the County Engineer with grade sheets and stations for all house laterals and Y branches and shall provide stakes for them at their proper locations with stationing plainly marked. Any change in location shall be requested in writing by the owner or his representative.
- No revisions shall be made in these plans without the approval of the County Engineer.
1. Use standard manhole frames and covers, S-117, *except as noted.*
  2. Use standard strength pipe.
  3. Use cement mortar for all vitrified clay pipe joints.
  4. Resurface all trenches within paved areas to meet L.A. County Road Dept. or California State Highway Dept. requirements in accordance with permit.
  5. Excavate four feet of sewer at points of interference with poles, S-119.
  6. House laterals to be constructed with laterals at property line \_\_\_\_\_ feet below curb grade *except as noted.*
  7. All structures shall be brick sewer structures, S-104, *except as noted.*
  8. For allowable leakage test, see Formula No. \_\_\_\_\_, Spec'n, Sec. 81.
  9. Manhole tops in unimproved Right-of-Way to be 4" above finish grade.



INDEX MAP  
 SCALE 1"=50'  
 TRACT NO. 20913  
 P.C. 3607

PROFILE ALIGNMENT AND GRADE OF  
**SANITARY SEWERS**  
 TO BE CONSTRUCTED IN

TRACT NO. 20913

PRIVATE CONTRACT NO. 3607  
 W. S. 48  
 3 SHEETS

Scale: VERT. 1"=4'  
 HORIZ. 1"=40'  
 JULY 1955  
 PREPARED IN THE OFFICE OF  
**M. W. FINLEY CO.**

*Leon W. Moore*  
 THE C.E.M. 3157  
 FOR LEGEND SEE PLAN NO. S-2-64

NOTE:  
 Grades to which this improvement is to be constructed are shown on plans and profiles. Grade points for top of curbs, center line of streets, or center line of alleys are shown by circles on profiles. All other points between designated points the grade shall be established so as to conform to a straight line drawn between said designated points.

Excavations are in feet above U.S.C. datum or mean sea level.

This drawing and the data hereon are hereby made a part of the specifications.

Work shall be constructed according to specifications on file in the office of the County Engineer and shall be presented only in the presence of the County Engineer.

Before work can be started, the contractor must obtain a permit to excavate in County streets from the L.A. County Road Dept., 100 W. 2nd St., and make a deposit with the County Engineer, Room 210 The American Bldg. 200 S. Broadway to cover the cost of construction inspection and record plans.

Approval of this plan by the County of Los Angeles does not constitute a representation as to the accuracy of the location of or the existence or non-existence of any underground utility, pipe, or structure within the limits of this project. This note applies to all sheets.

If work is to be done in a State Highway, a permit must be obtained from the State of California, Division of Highways, 120 South Spring Street.

COUNTY OF LOS ANGELES, CALIFORNIA  
 Approved, William A. Fox, County Engineer  
 Approved, A. M. Egan  
 CHIEF ENGINEER, SAN DIST. NO. 10  
 A. P. Bellis  
 S. P. Bennett  
 Chief Engineer  
 7-28-55  
 Title of County Engineer, Reg. C. E. No. 7960.

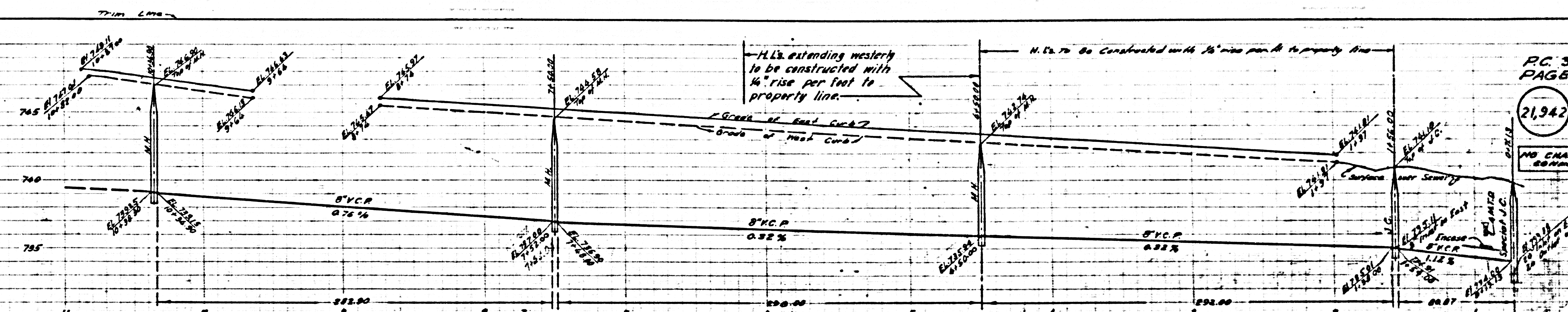
P.C. 3607  
 PAGE 1

(21,941)

(6)

P.C. 3607 TRACT NO. 20913

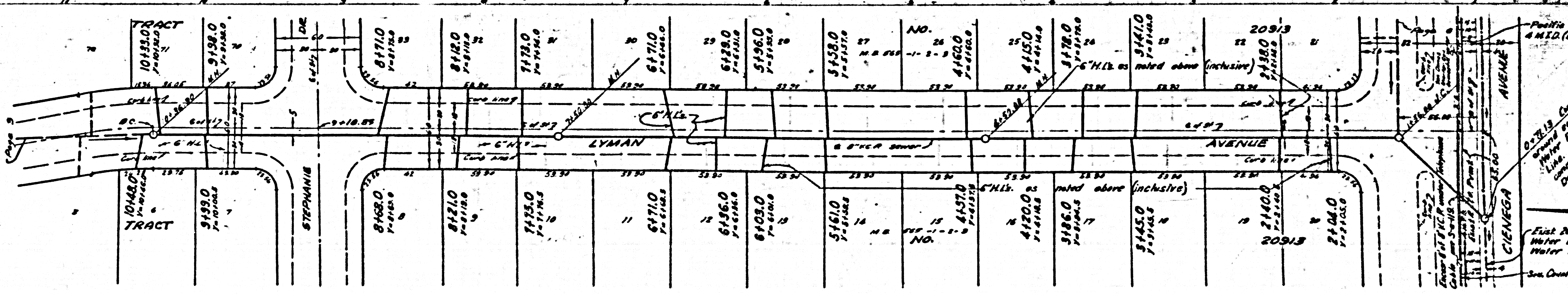
607  
3  
PAGE  
CTIONS



PC 3607  
PAGE 2

21,942 745

NO CHARGE FOR  
CONNECTIONS

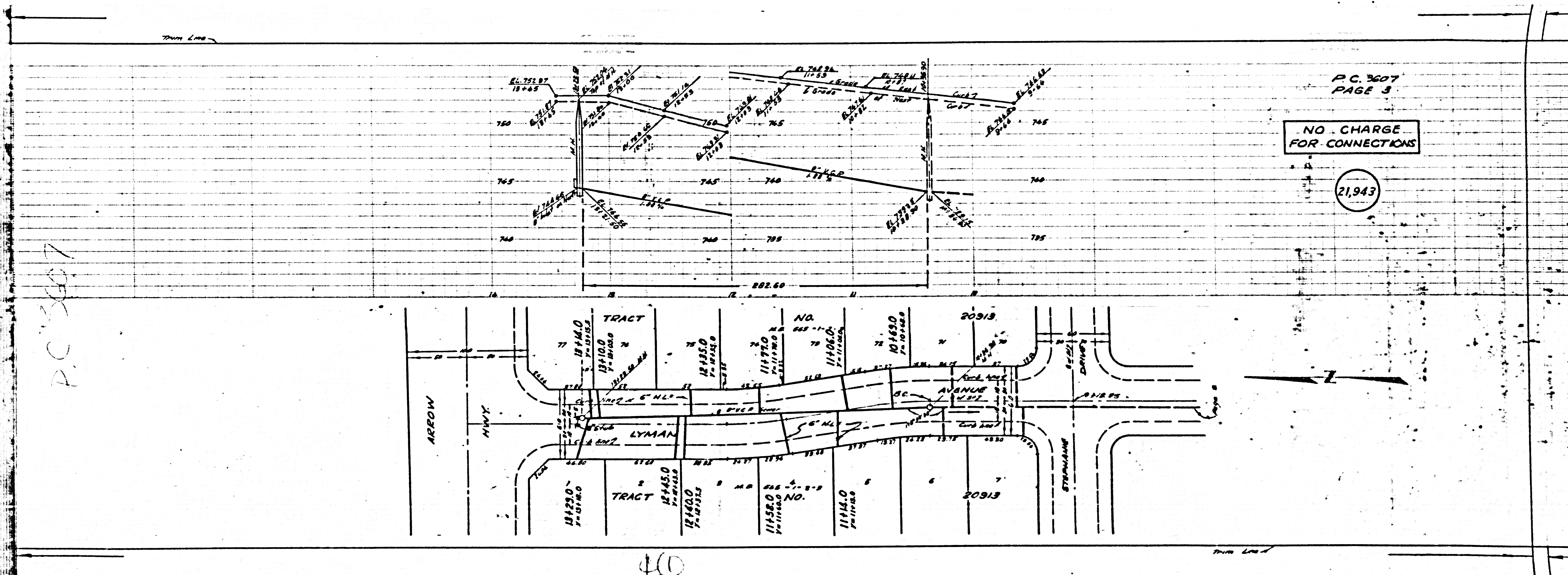


Pacific Tel & Tel Co  
4 M.I.D. (Coastal Cable)

East 26" Metropolitan  
Water Dist. (Waste  
Water Line) San Dist. #122

San Diego Gas Co

20



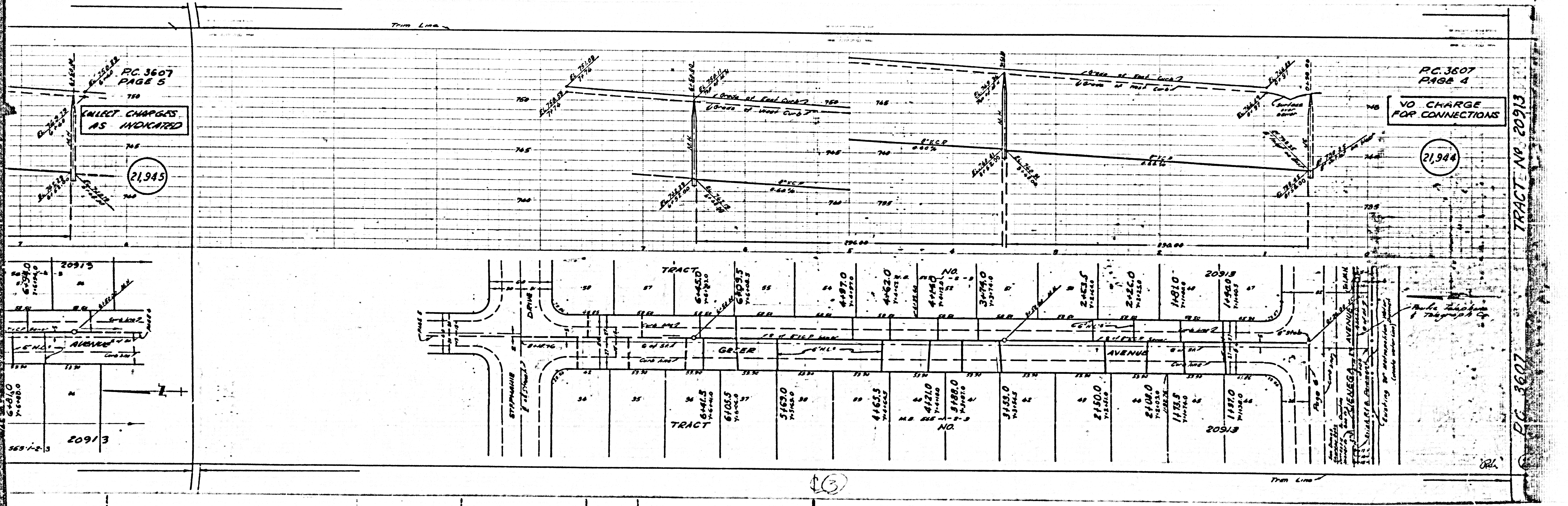
P.C. 3607  
PAGE 3

NO CHARGE  
FOR CONNECTIONS

21,943

P.C. 3607

40



PC 3607  
PAGE 5

COLLECT CHARGES  
AS INDICATED

21,945

PC 3607  
PAGE 4

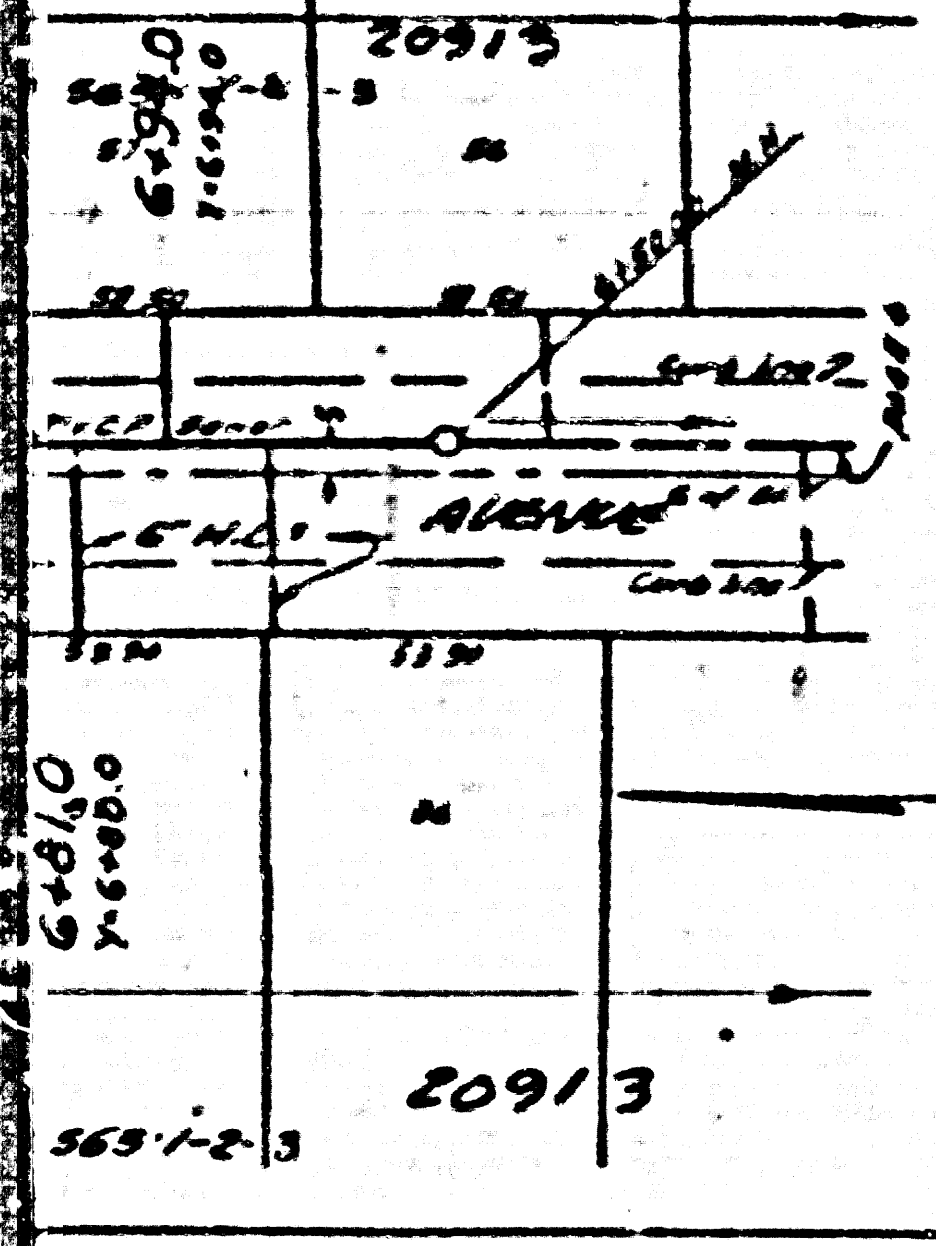
NO CHARGE  
FOR CONNECTIONS

21,944

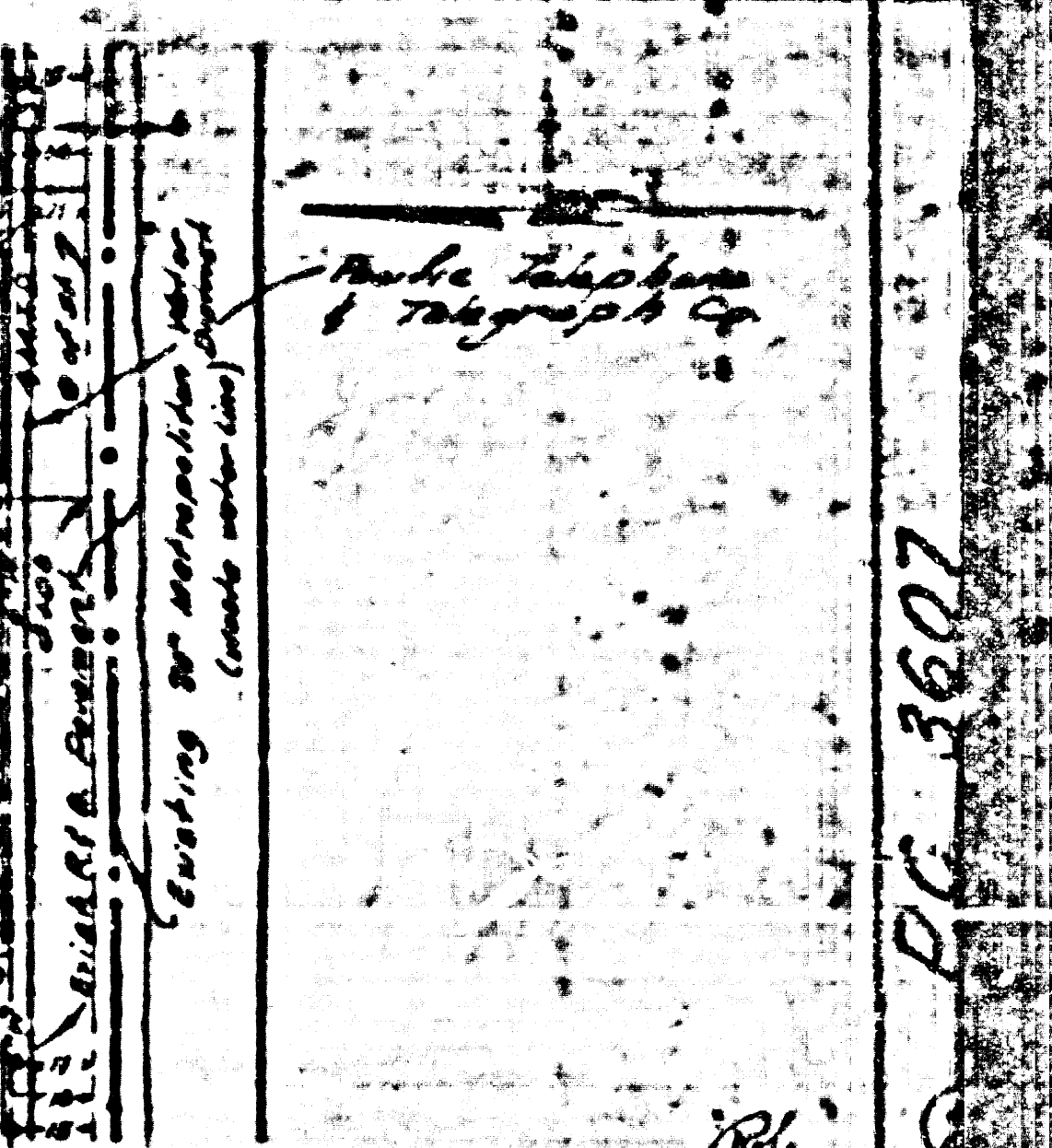
TRACT NO. 20913

PC 3607

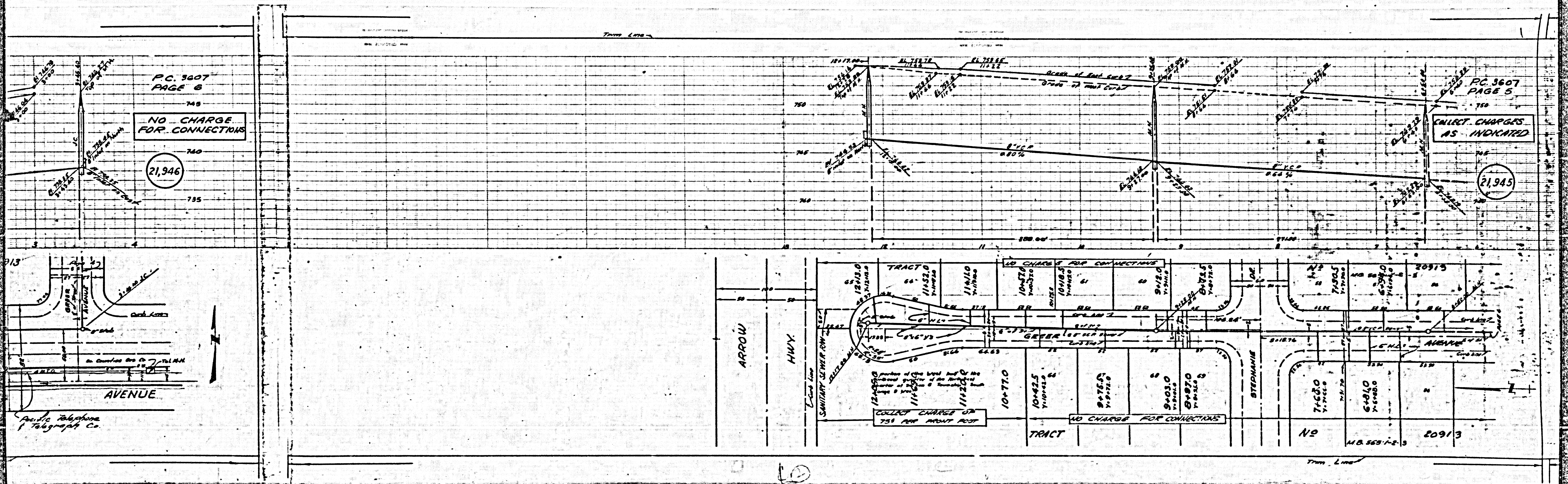
13



20913



20913



P.C. 3607  
PAGE 6

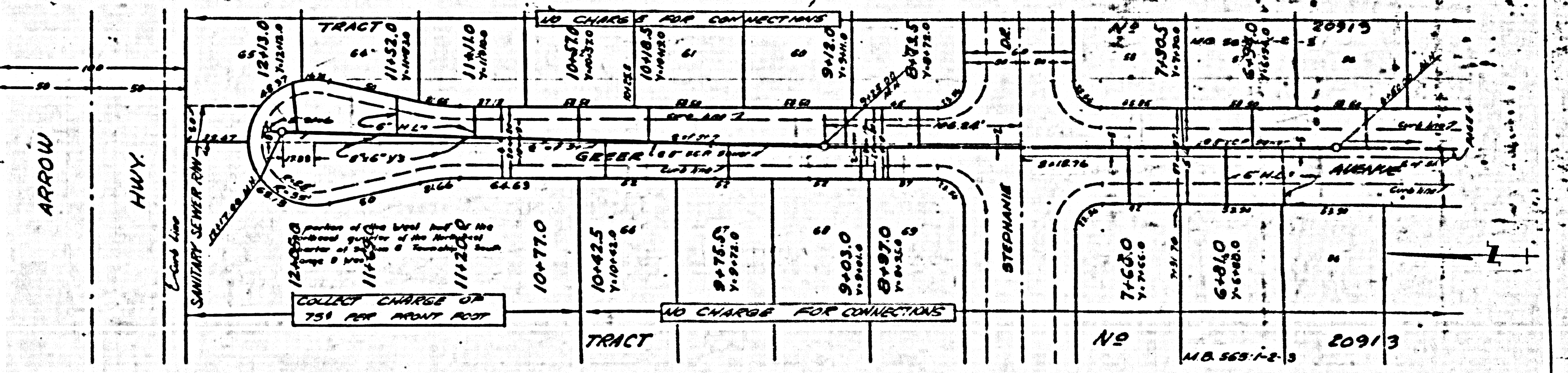
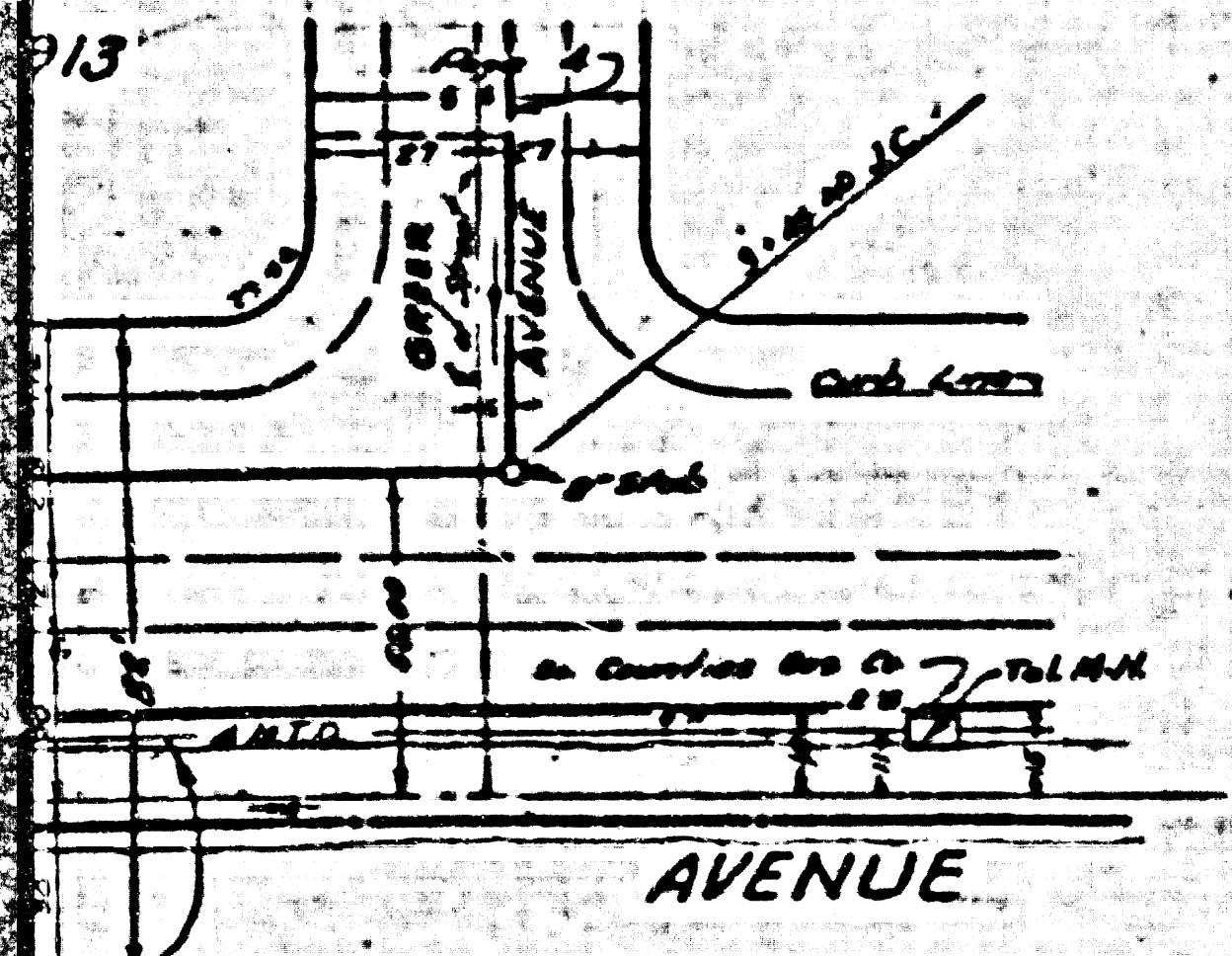
NO CHARGE  
FOR CONNECTIONS

21,946

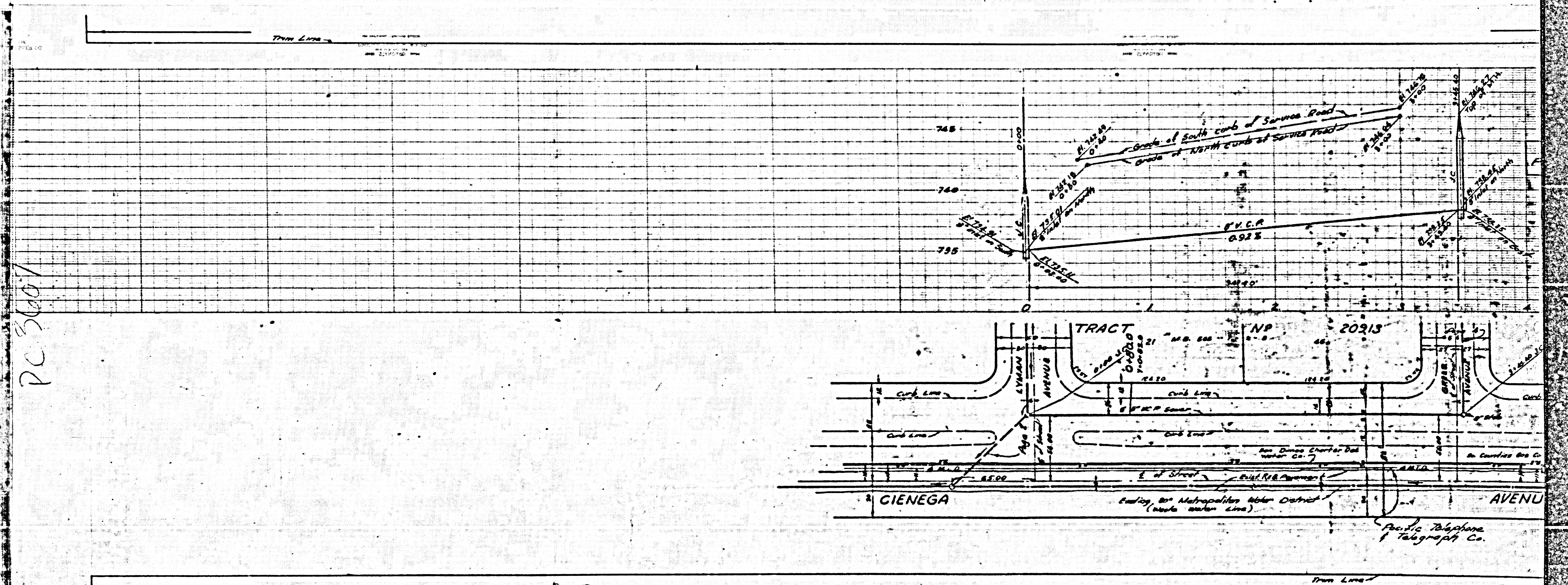
P.C. 3607  
PAGE 5

COLLECT CHARGES  
AS INDICATED

21,945



M.B. 563-1-2-3 20913



PC 3007

C.O.

Paula, Robinson & Telegraph Co.