

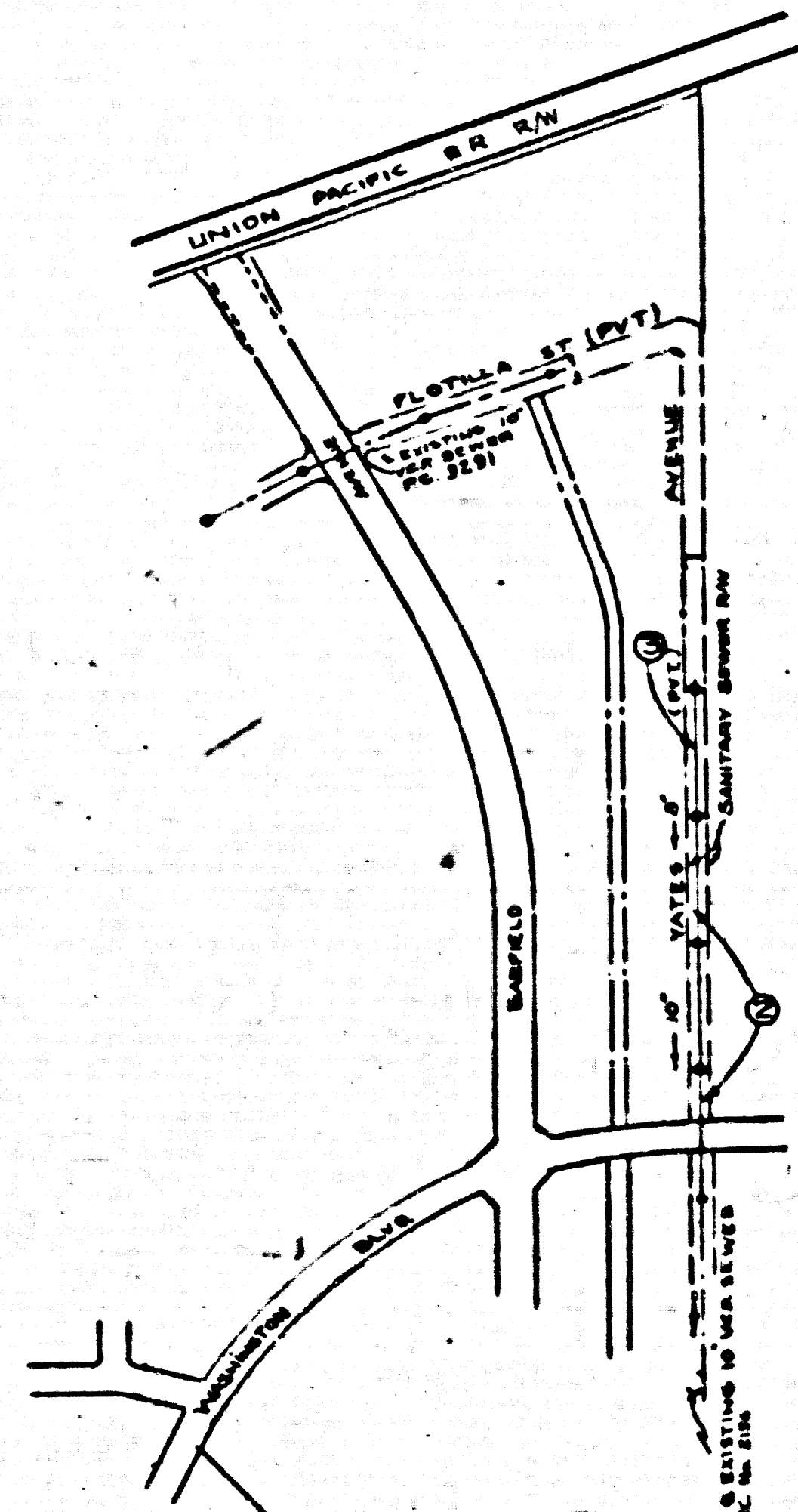
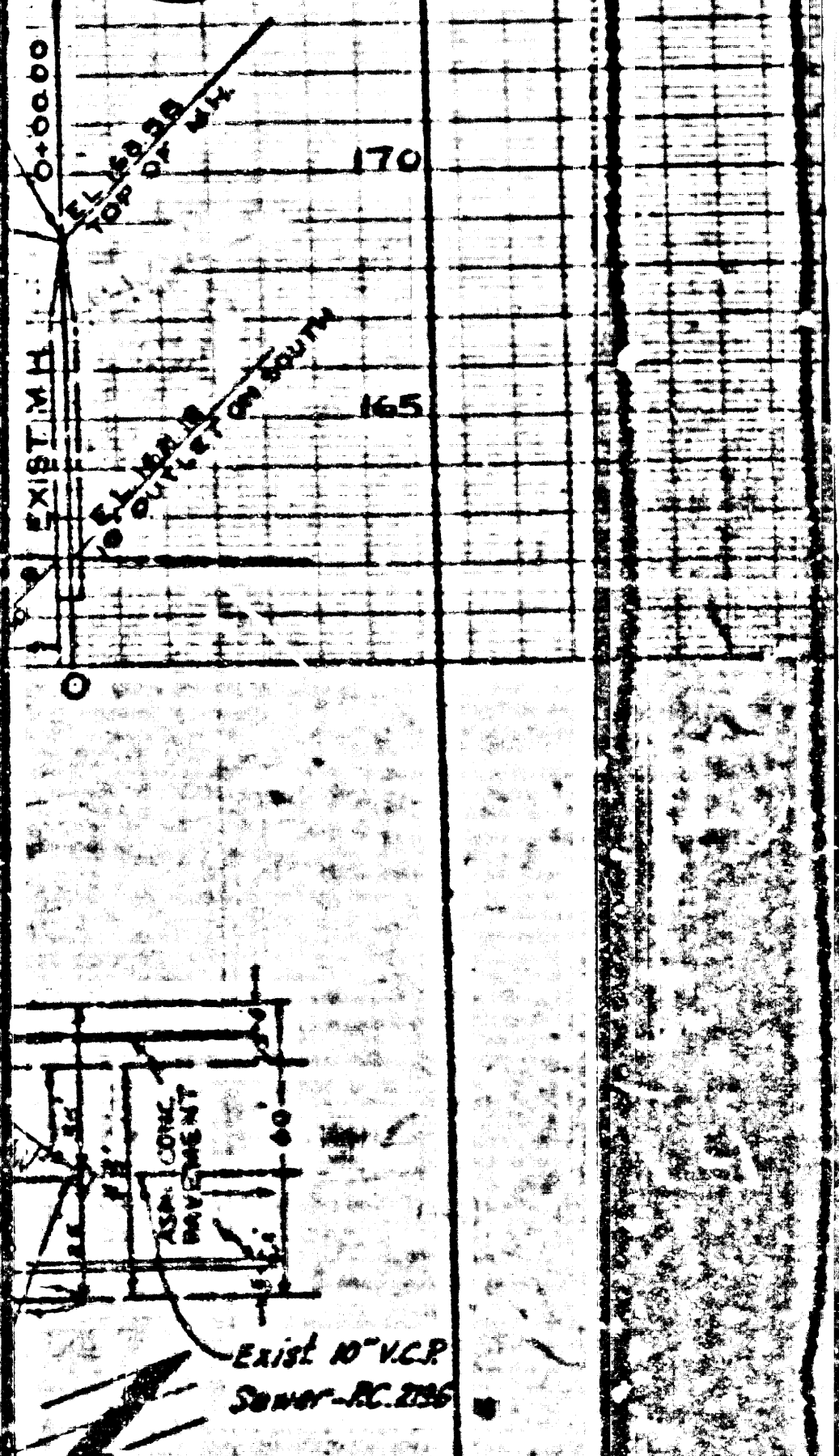
P.C. 3619
PAGE 2

22,908

175

170

165



BY ORDER OF THE COUNTY ENGINEER
COUNTY OF LOS ANGELES
WALTER W. COOK, CIVIL ENGINEER
REGISTERED PROFESSIONAL ENGINEER
No. 10844

EAST LOS ANGELES BLDG. DISTRICT NO. 6

- NOTE:
- Provide stakes on the property lines or property lines produced at right angles to the sewer line at the center line of each manhole.
- No representative of the County Engineer will survey or layout any portion of the work.
- The owner or his authorized representative shall furnish the County Engineer with grade sheets and stations for all house laterals and Y branches and shall provide stakes for them at those proper locations with elevations plainly marked. Any change in location shall be requested in writing by the owner or his representative.
- No revisions shall be made in these plans without the approval of the County Engineer.
1. Use standard manhole frames and covers, S-117.
 2. Use standard strength pipe except as noted.
 3. Use cement mortar for all vitrified clay pipe joints.
 4. Resurface all trench within paved area to meet L. A. County Road Dept. or California State Highway Dept. requirements in accordance with permit.
 5. Excise four feet of sewer at points of interference with poles, S-119.
6. All structures shall be brick sewer structures, S-104.
 7. For allowable leakage test, see Formula No. 5, Spec's, Sec. 81.
- Manhole tops to unimproved Rights-of-Way to be 6" above finish grade.

NO CHARGE FOR CONNECTIONS
W. W. Cook 1-31-56

SHEET	PAGE
1	1-2

checked 6-15-56 W. W. Cook

Trim Line

P.C. 3619
PAGE 1

22,907

(3)

PROFILE, ALIGNMENT AND GRADE OF
SANITARY SEWERS
TO BE CONSTRUCTED IN

YATES AVENUE
(A PRIVATE STREET)

PRIVATE CONTRACT NO. 3619
W. S. 36
ONE SHEET

Scale: VERT. 1" = 4' HORIZ. 1" = 40'
JULY, 1955
PREPARED IN THE OFFICES OF

CENTRAL MANUFACTURING DISTRICT INC.

Walter W. Cook
C.E. No. 7709

FOR LEGEND SEE PLAN NO. S-117

NOTE:

Grades to which this improvement is to be constructed are shown on plans and profiles. Grade points for top of curb, center line of street, or center line of pipe are shown by stakes on profiles. At all points between designated points the grade shall be established as to conform to a straight line drawn between said designated points.

Elevations are in feet above U.S.C. & G.S. Sea Level Datum of 1929.

This drawing and the data hereon are hereby made a part of the specifications.

Work shall be constructed according to specifications on file in the office of the County Engineer and shall be presented only in the presence of the County Engineer.

Before work can be started, the contractor shall obtain a permit to excavate in County streets from the L.A. County Road Dept., 180 W. 2nd St. and make a deposit with the County Engineer, Room 224, 225 So. Broadway, sufficient to cover the cost of construction inspection and record plan.

Approval of this plan by the County of Los Angeles does not constitute a representation as to the accuracy of the location of or the existence or non-existence of any underground utility, pipe, or structure within the limits of this project. This note applies to all sheets.

If work is to be done in a State Highway, a permit must be obtained from the State of California, Division of Highways, 120 South Spring Street.

COUNTY OF LOS ANGELES, CALIFORNIA

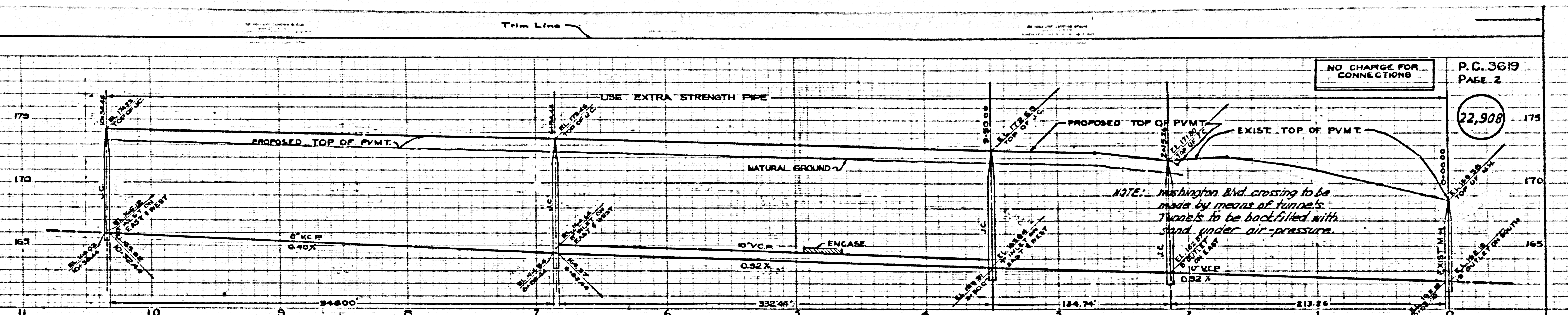
Approved, John A. Lott County Engineer
W. W. Cook
Civil Engineer

Approved, A. M. Rowe
CHIEF ENGINEER SAN. DIST. NO. 6
A. M. Rowe
City Engineer

Checked by: P. H. ... 1-31-56
Office of County Engineer, Dep. C. E. No. 7862.

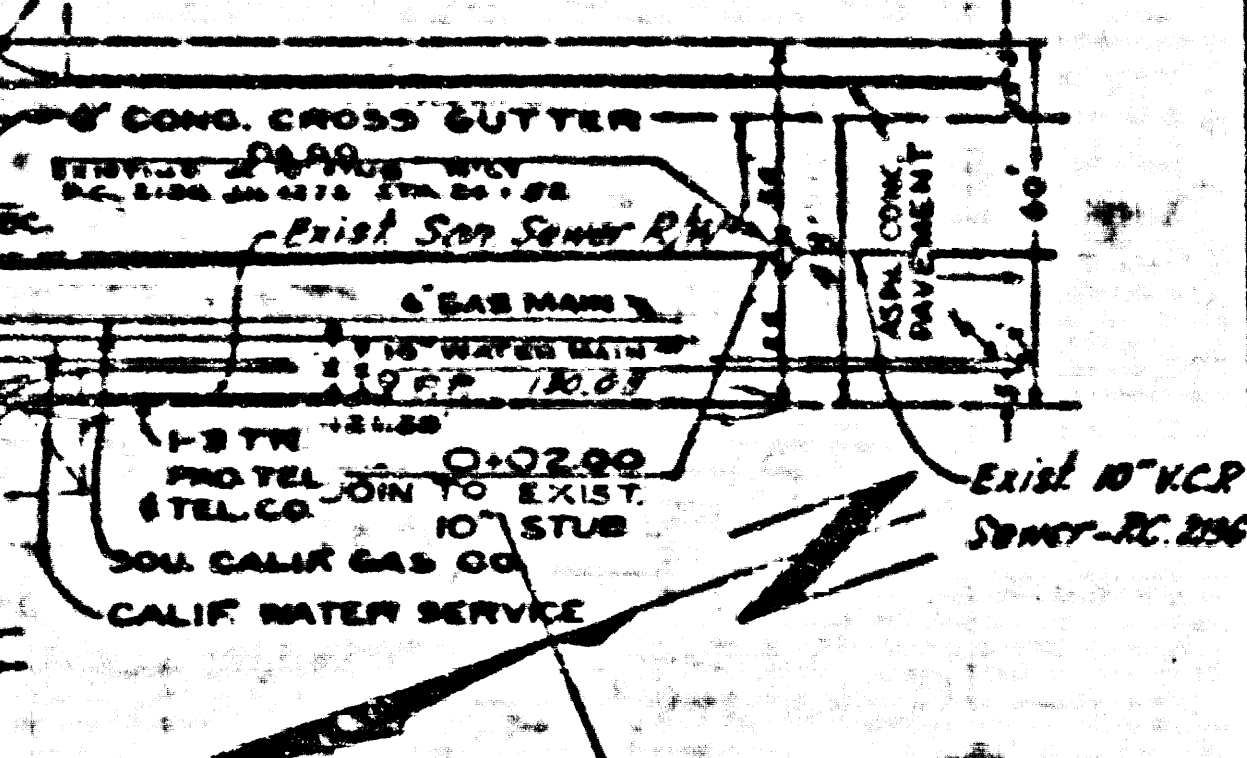
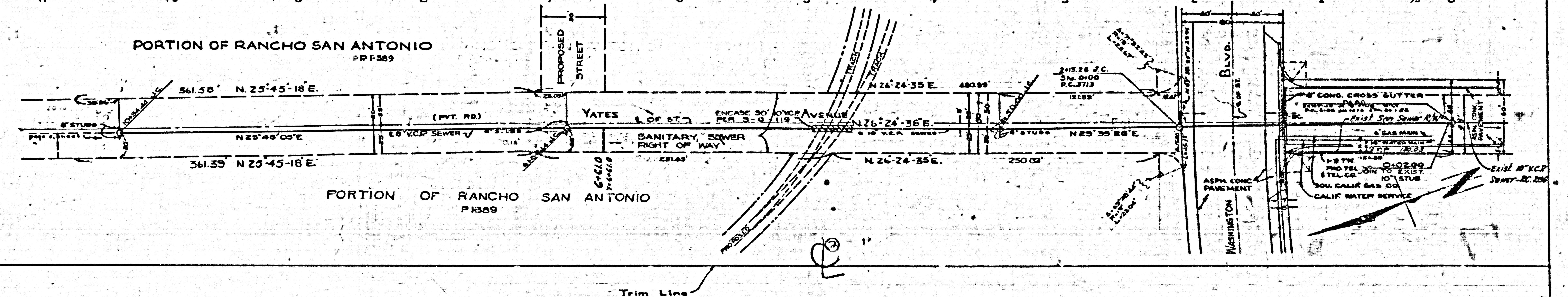
P.C. 3619
YATES AVENUE
P.C. 3619

277



NO CHARGE FOR CONNECTIONS
 P.C. 3619
 PAGE 2
 22,908

NOTE: Washington Blvd. crossing to be made by means of tunnels. Tunnels to be backfilled with sand under air-pressure.



12

PC 3619

TRIM LINE

PC 3619
PAGE 3
22,909

NO CHARGE FOR CONNECTIONS

