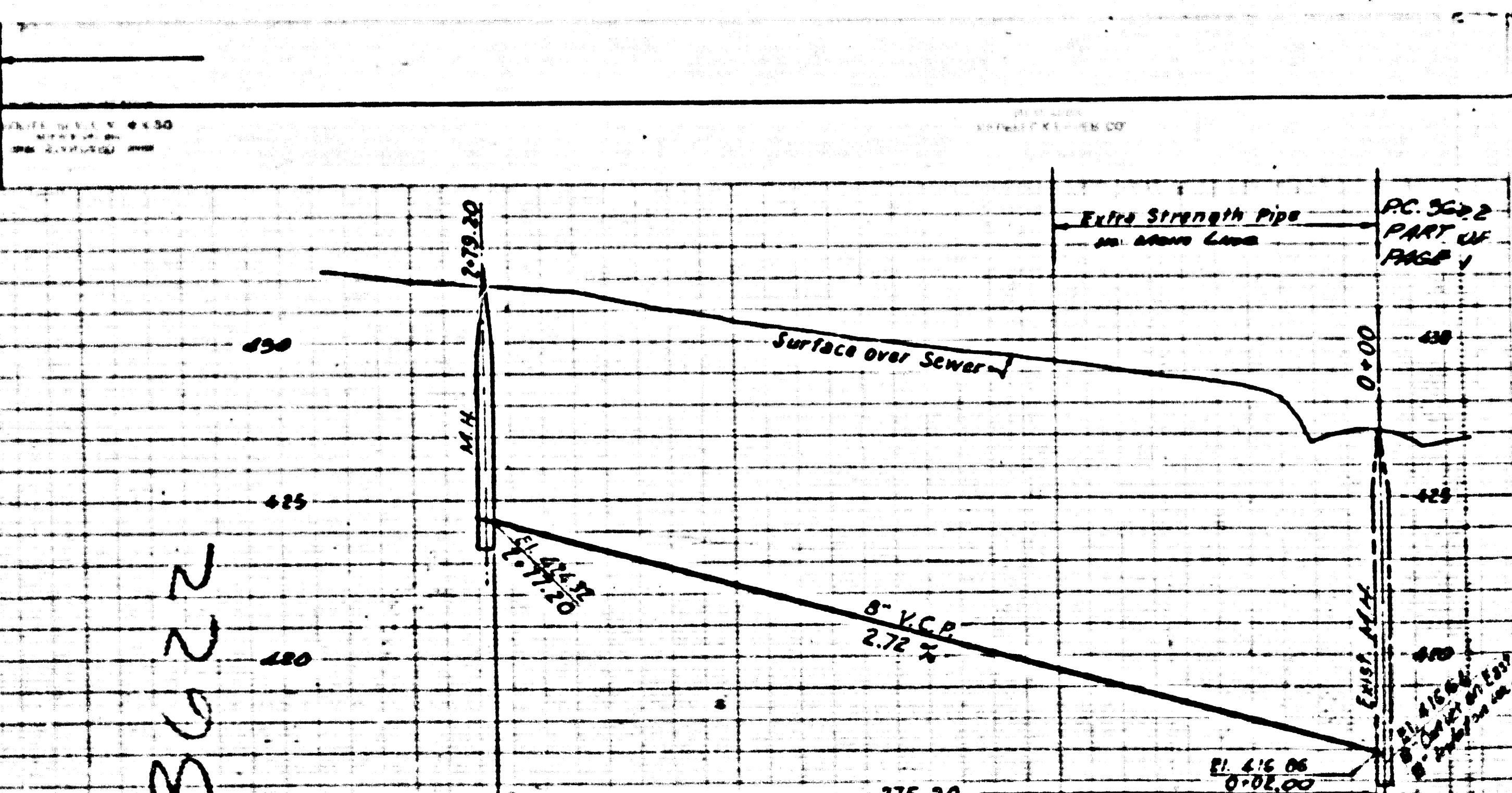


TEMPLE CITY BLDG. DIST. NO 5

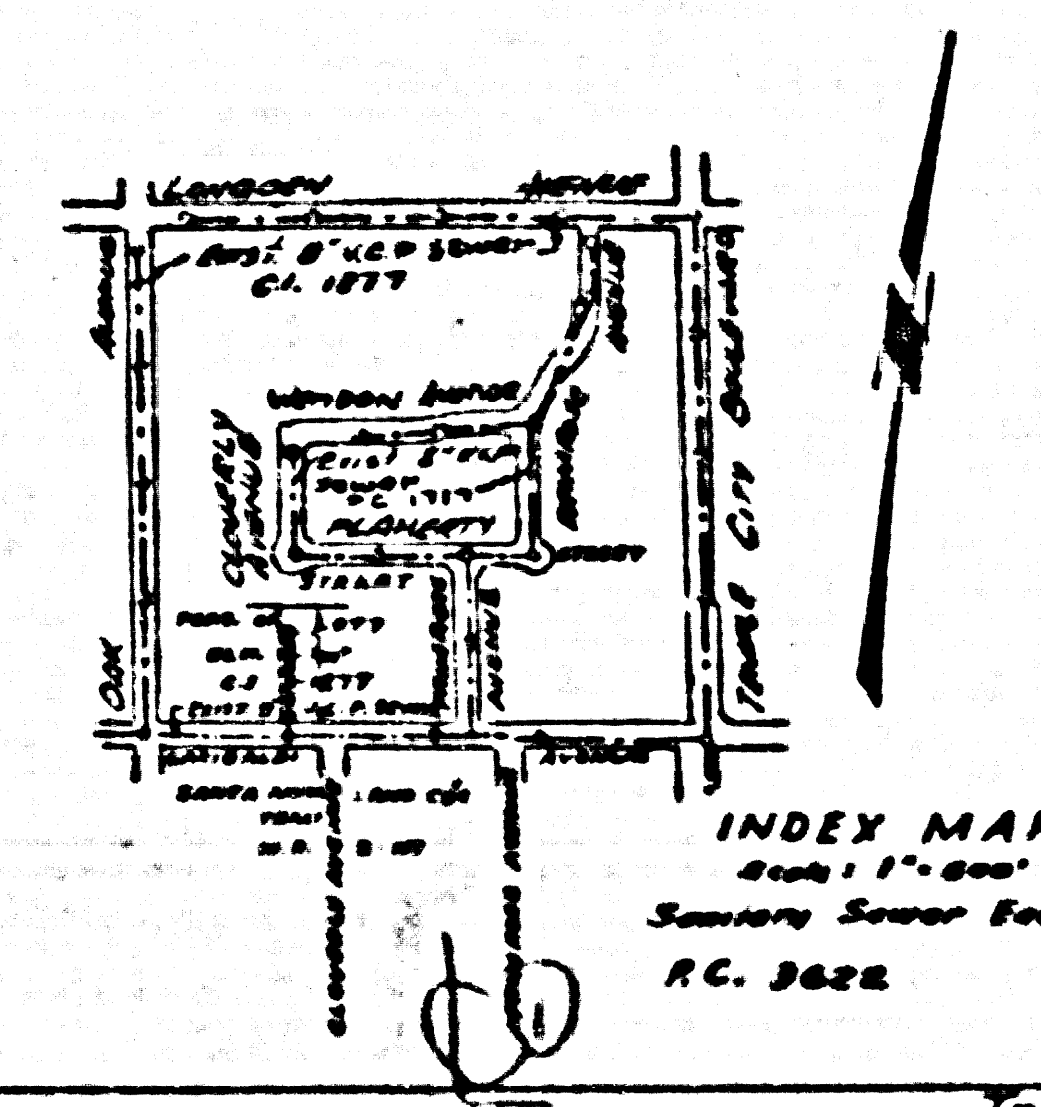
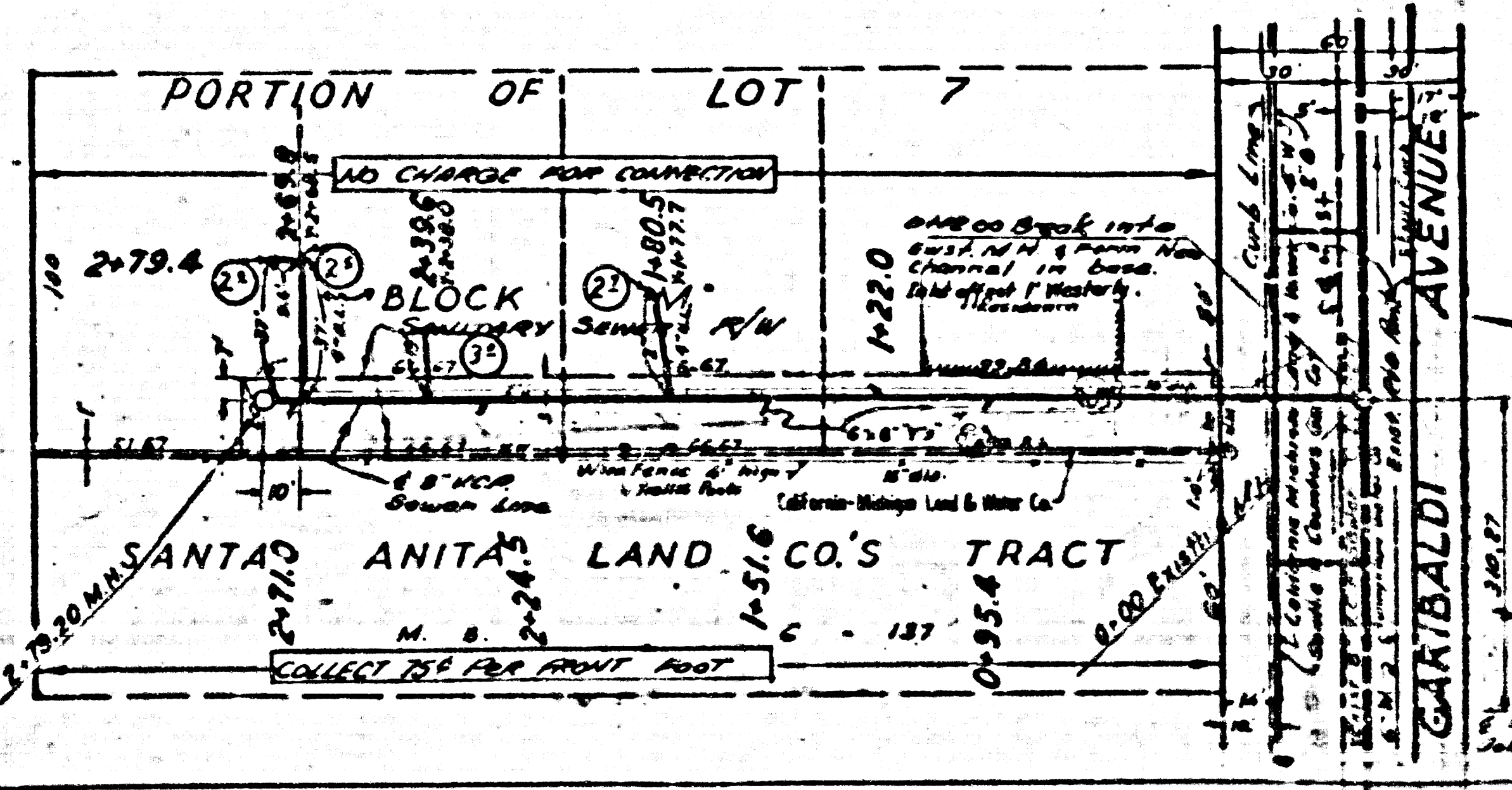
Trim Line 7



- NOTE:**
1. Provide stakes on the property lines or property lines produced at right angles to the sewer line at the center line of each manhole.
 2. No representative of the County Engineer will survey or lay out any portion of the work.
 3. The owner or his authorized representative shall furnish the County Engineer with grade sheets and stations for all house laterals and Y branches and shall provide stakes for these at their proper locations with stationing plainly marked. Any change in location shall be requested in writing by the owner or his representative.
 4. No revisions shall be made in these plans without the approval of the County Engineer.
 5. Use standard manhole frames and covers, S-a-117.
 6. Use standard strength pipe except as noted.
 7. Use cement mortar for all vitrified clay pipe joints.
 8. Surface on all trench within paved area to meet L.A. County Road Dept. or California State Highway Dept. requirements in accordance with permit.
 9. Encase four feet of cover at points of interference with poles, S-a-115.
 10. Manhole laterals to be constructed with laterals at property lines six feet below curb grade except as noted.
 11. All structures shall be brick sewer structures, S-a-104.
 12. For allowable leakage test, see Formula No. 3, Spec's., Sec. 51.
 13. Manhole tops in unimproved Right-Of-Way to be 6" above finish grade.

B.M. T&E 194
Garibaldi & Princeton St. Corner
Dist Sp. on Curb 8' W of Mand
Curb Return

PC 3622



PROFILE, ALIGNMENT AND GRADE OF
SANITARY SEWERS
TO BE CONSTRUCTED IN
SANITARY SEWER RIGHT OF WAY
NORTH OF GARIBALDI AVENUE

SHEET	PAGE
1	1

PRIVATE CONTRACT NO. 3622
W. S. 44
1 SHEET

Scale: $\frac{1}{4}$ " = 1'-0"
JULY, 1955
PREPARED IN THE OFFICE OF
M. W. FINLEY

CONNECTION CHARGES
AS INDICATED
L. Curtis 8-17-55

FOR LEGEND SEE PLAN NO. S-a-44

Approved, John A. Lambie, County Engineer

Checked by *REK* 2-7-55
Office of County Engineer, Inc., C. E. No. 792

Approved, A. M. Rowe
Checked by *AW*
Office of County Engineer, Inc., C. E. No. 792

Checked by *REK* 2-7-55
Office of County Engineer, Inc., C. E. No. 792

Checked by *REK* 2-7-55
Office of County Engineer, Inc., C. E. No. 792

Checked by *REK* 2-7-55
Office of County Engineer, Inc., C. E. No. 792

Checked by *REK* 2-7-55
Office of County Engineer, Inc., C. E. No. 792

Checked by *REK* 2-7-55
Office of County Engineer, Inc., C. E. No. 792

Checked by *REK* 2-7-55
Office of County Engineer, Inc., C. E. No. 792

Checked by *REK* 2-7-55
Office of County Engineer, Inc., C. E. No. 792

Checked by *REK* 2-7-55
Office of County Engineer, Inc., C. E. No. 792

Checked by *REK* 2-7-55
Office of County Engineer, Inc., C. E. No. 792

Checked by *REK* 2-7-55
Office of County Engineer, Inc., C. E. No. 792

Checked by *REK* 2-7-55
Office of County Engineer, Inc., C. E. No. 792

P.C. 3622
Page 1

22,234

SANITARY SEWER R/W 1/2 GARIBALDI AVENUE
0-00
0-25.20
PC 3622
C.E.S.S.

Checked 3-6-56 *W. Lane*

Trim Line 7