

Trim Line 7
PUENTE BLDG. DIST. N^o 2

10.44 S.G. 1220 LIT. R.E. County Wash Box
 N.W. corner 60th Avenue - 97th - Hollywood Blvd.
 S.W. 382.558

- NOTE:**
 Provide stakes on the property lines or property lines produced at right angles to the sewer line at the center line of each manhole.
 No representation of the County Engineer will survey or layout any portion of the work.
 The owner or his authorized representative shall furnish the County Engineer with grade sheets and stations for all house laterals and Y branches and shall provide stakes for them at their proper locations with stationing plainly marked. Any change in location shall be requested in writing by the owner or his representative.
 No revisions shall be made in these plans without the approval of the County Engineer.
1. Use standard manhole frames and covers, S-e-117.
 2. Use standard strength pipe except as noted.
 3. Use cement mortar for all vitrified clay pipe joints.
 4. Resurface all trench within paved area to meet L.A. County Road Dept. or California State Highway Dept. requirements in accordance with permit.
 5. Excise four feet of sewer at points of interference with poles, S-e-119.
 6. House laterals to be constructed with inverts at property line. G feet below curb grade except as noted.
 7. All structures shall be brick sewer structures, S-e-104.
 8. For alternate leakage test, see Formulas No. 1, Spec's, Sec. 51.
 9. Manhole tops in unimproved Rights-of-Way to be 6" above finish grade.

PROFILE, ALIGNMENT AND GRADE OF
SANITARY SEWERS
 TO BE CONSTRUCTED IN

TRACT N^o 21865

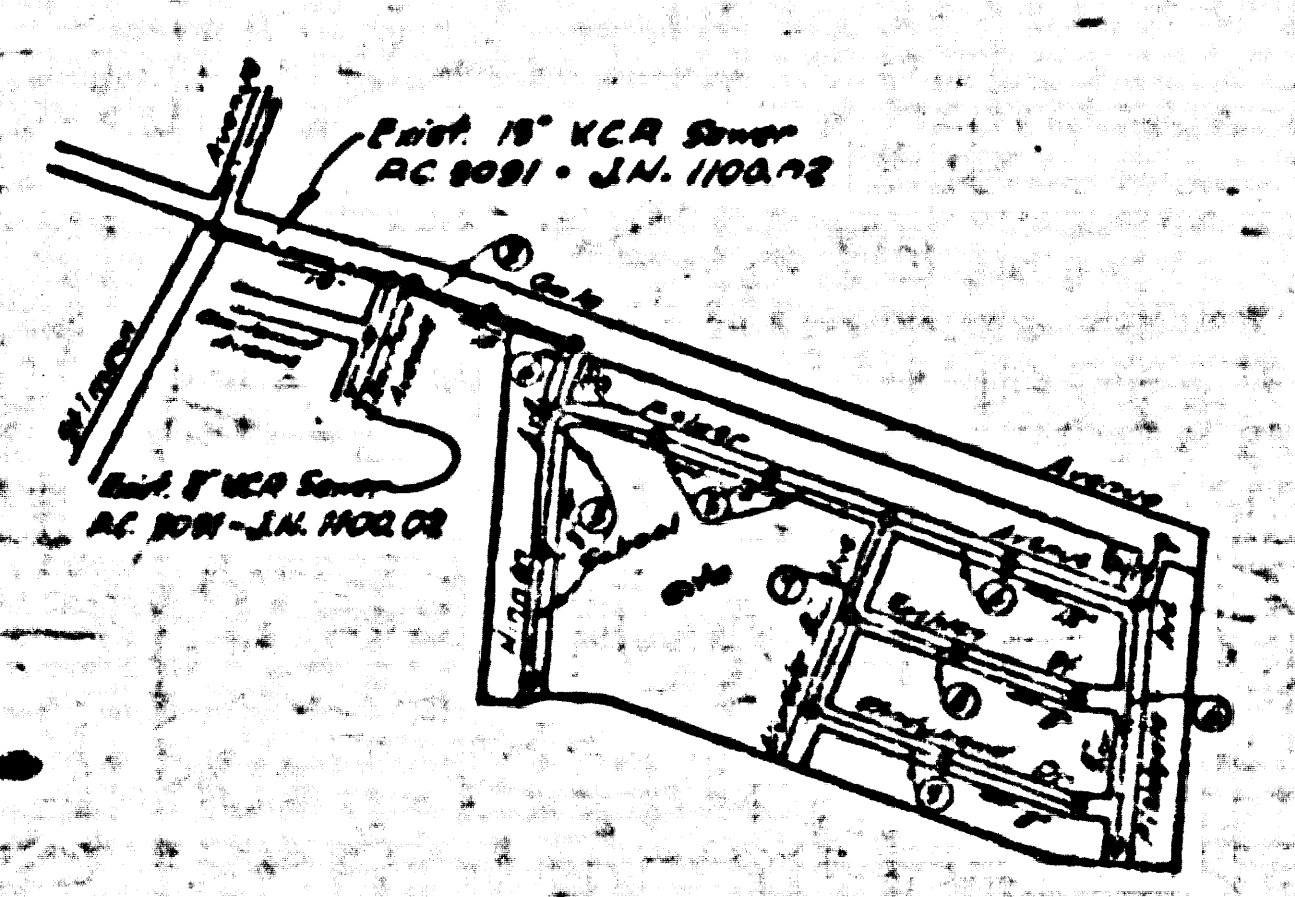
PRIVATE CONTRACT NO. 8624
 W. S. 38
TWO SHEETS
 Scale: VERT. 1" = 4'
 HORIZ. 1" = 40'
 NOV., 1955

Robert H. Schrage
 CIVIL ENGINEER
 FOR LEGEND SEE PLAN NO. S-e-64

NOTE:
 Grades to which this improvement is to be constructed are shown on plans and profiles. Grade points for top of curbs, center line of streets, or center line of alleys are shown by circles on profiles. At all points between designated points the grade shall be established so as to conform to a straight line drawn between said designated points.
 Elevations are in feet above U.S.C. & G.S. sea level datum of 1929.
 This drawing and the data hereon are hereby made a part of the specifications.
 Work shall be constructed according to specifications on file in the office of the County Engineer and shall be prosecuted only in the presence of the County Engineer.
 Before work can be started, the contractor must obtain a permit to encroach in County streets from the L.A. County Road Dept., 108 W. 2nd St. and make a deposit with the County Engineer, 258 South Broadway, Room 5842, sufficient to cover the cost of construction inspection and record plans.
 Approval of this plan by the County of Los Angeles does not constitute a representation as to the accuracy of the location of or the existence or non-existence of any underground utility, pipe, or structure within the limits of this project. This note applies to all sheets.
 If work is to be done in a State Highway, a permit must be obtained from the State of California, Division of Highways, 120 South Spring Street.

COLLECT CHARGES AS INDICATED
L. C. ...

COUNTY OF LOS ANGELES, CALIFORNIA
 Approved, *A. M. ...* County Engineer
 Approved, *A. M. ...*
 CIVIL ENGINEER



INDEX MAP
 TRACT N^o 21865
 SCALE 1" = 400'

Check 5-23-56 Wilson

Trim Line 7

P.C. 3624
 PAGE 2

CHARGES INDICATED

22,693

P.C. 3624
 PAGE 1

22,692

P.C. 3624
PAGE 5

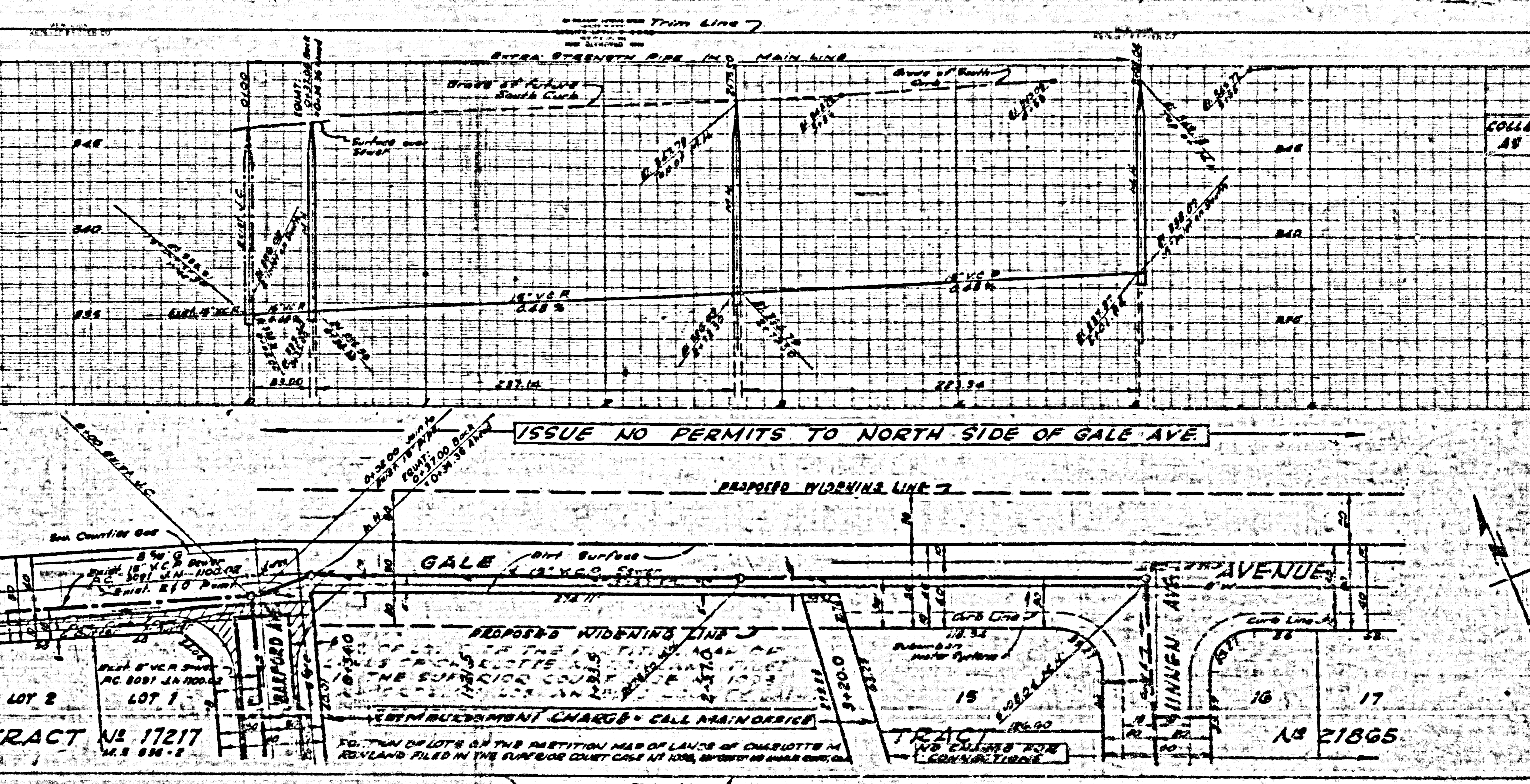
NO CHARGE FOR
CONNECTIONS

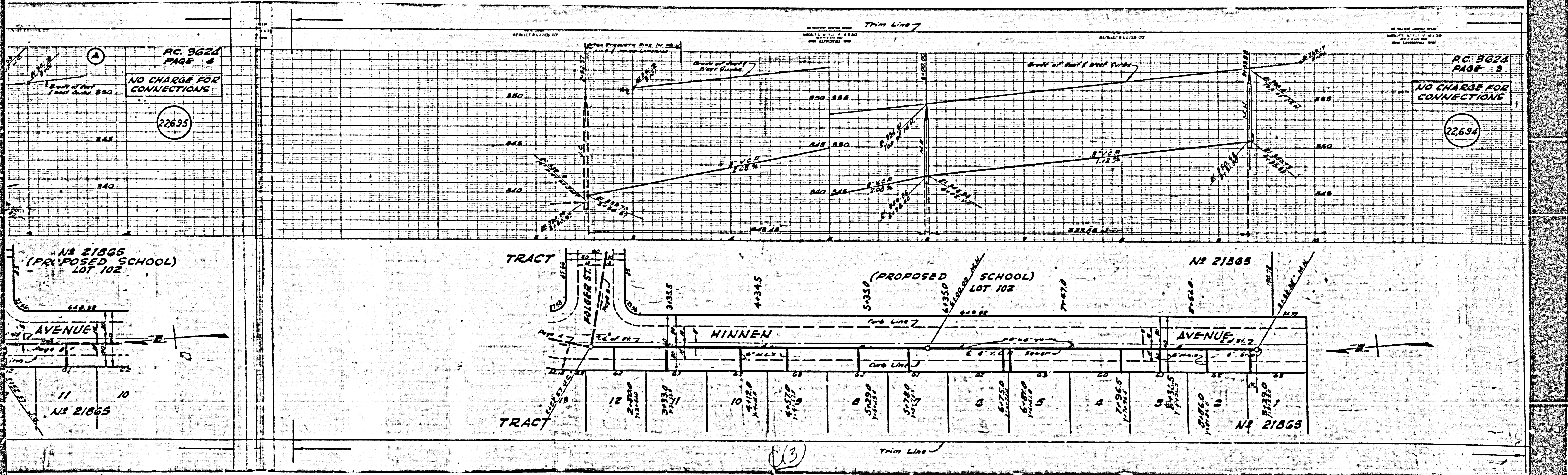
22,694

P.C. 3625
PAGE 2

COLLECT CHARGES
AS INDICATED

22,693





RC 3624
PAGE 8
NO CHARGE FOR CONNECTIONS

22635

RC 3624
PAGE 9
NO CHARGE FOR CONNECTIONS

22634

NO 21865
(PROPOSED SCHOOL)
LOT 102

AVENUE

NO 21865

TRACT

POLBER ST

HINNEN

AVENUE

TRACT

4-345

5-350

(PROPOSED SCHOOL) LOT 102

6-350

7-470

8-470

9-470

10-470

11-470

12-470

NO 21865

(3)

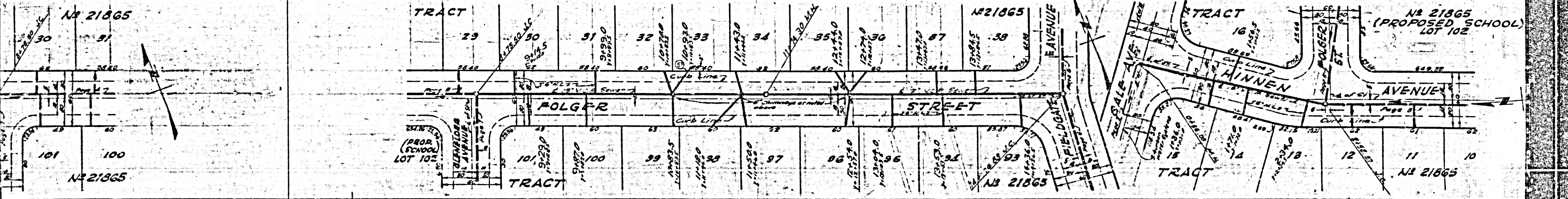
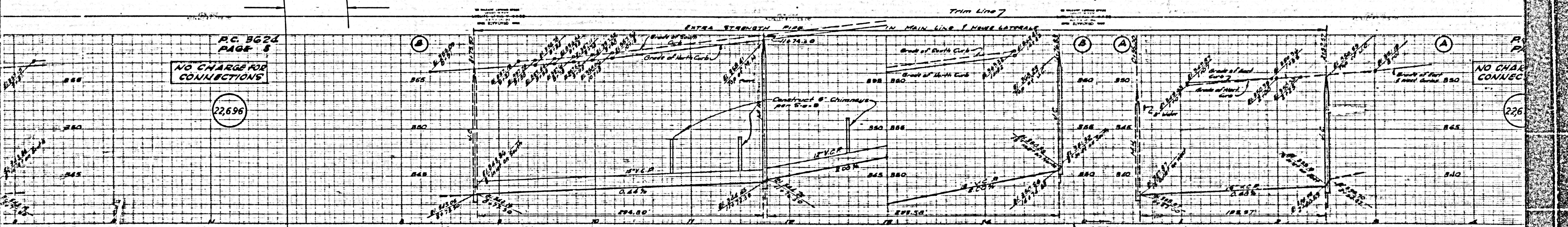
Trim Line

P.C. 9624
PAGE 8
NO CHARGE FOR CONNECTIONS

22,696

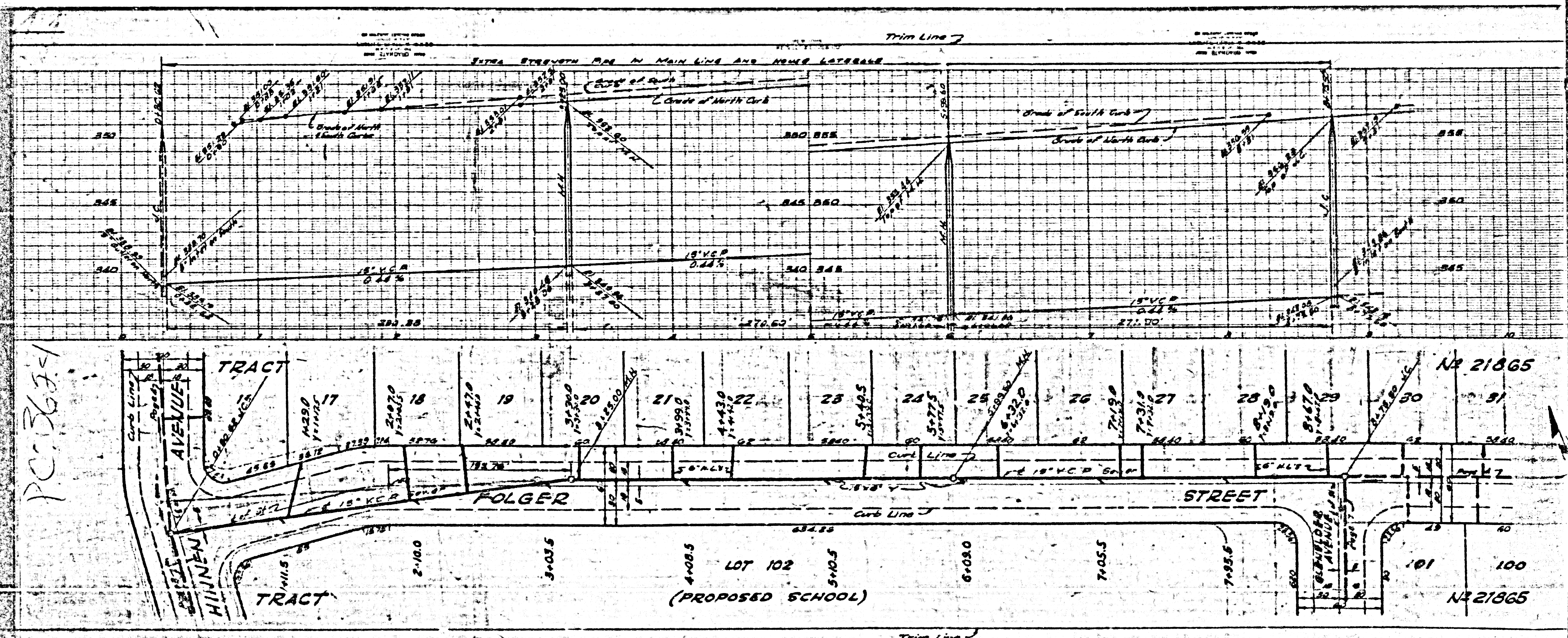
NO CHARGE FOR CONNECTIONS

22,696

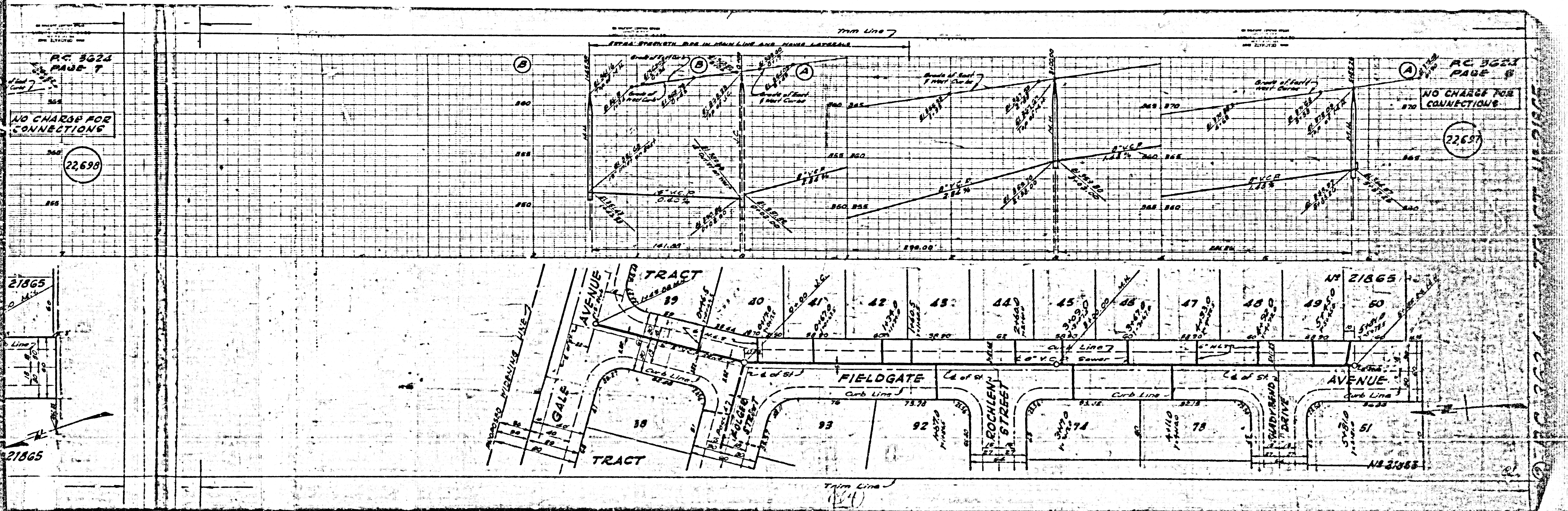


7

Trim Line 7



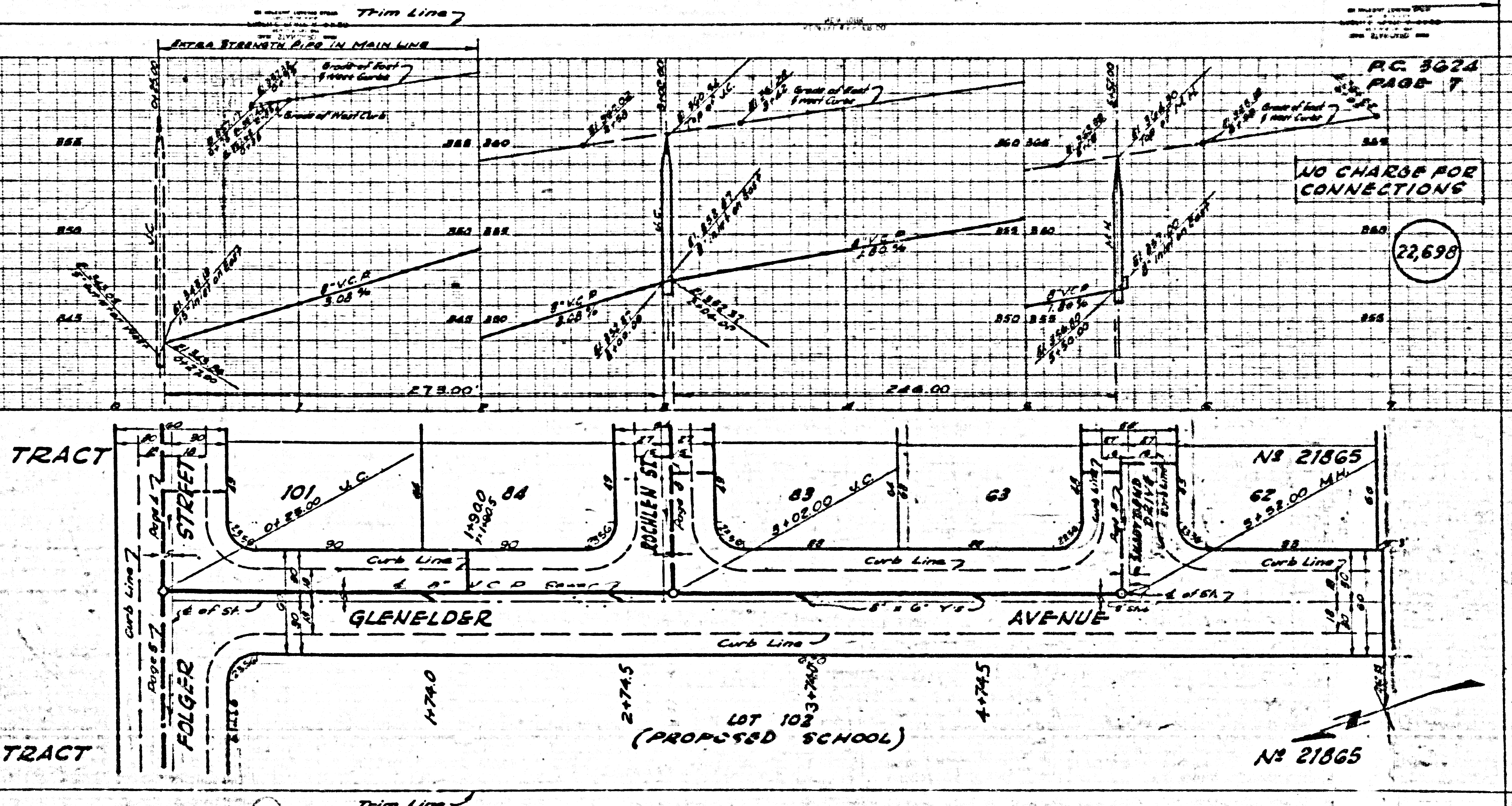
20



RC 3024
PAGE 8

NO CHARGE FOR
CONNECTIONS

22,699



RC 3024
PAGE 7

NO CHARGE FOR
CONNECTIONS

22,698

(3)

P.C. 3624
PAGE 8

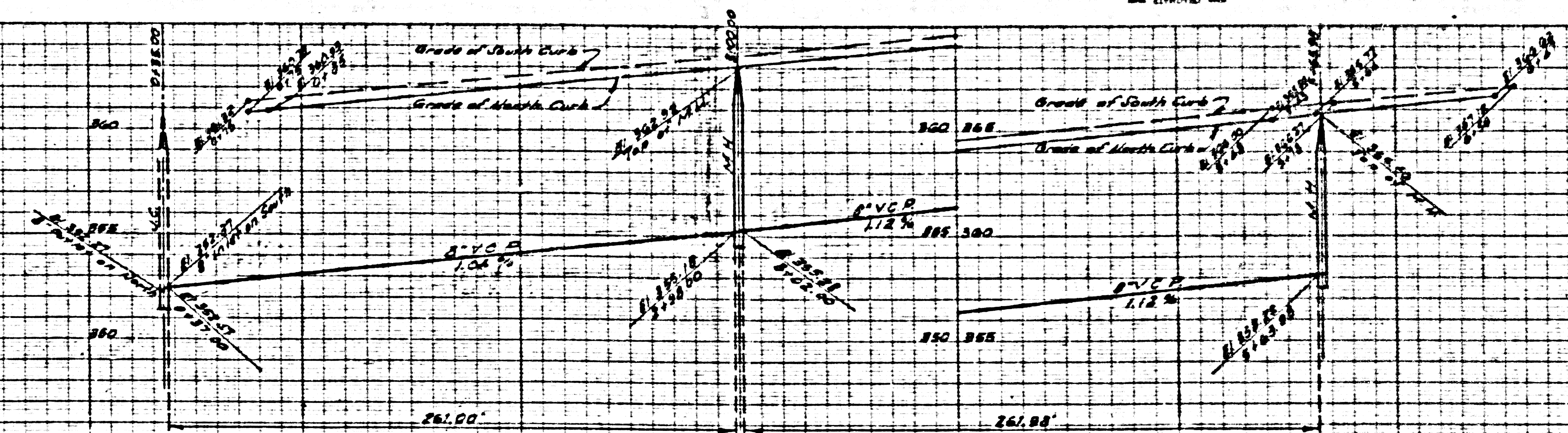
NO CHARGE FOR
CONNECTIONS

22,700

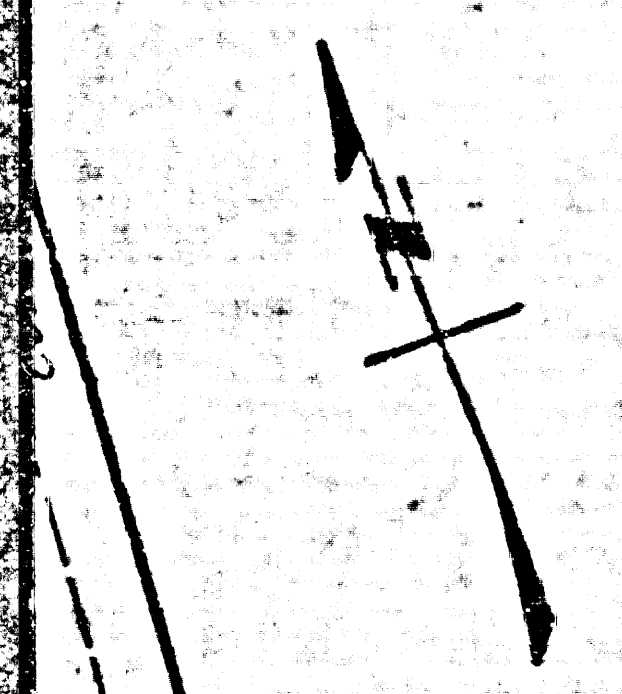
P.C. 3024
PAGE 8

NO CHARGE FOR
CONNECTIONS

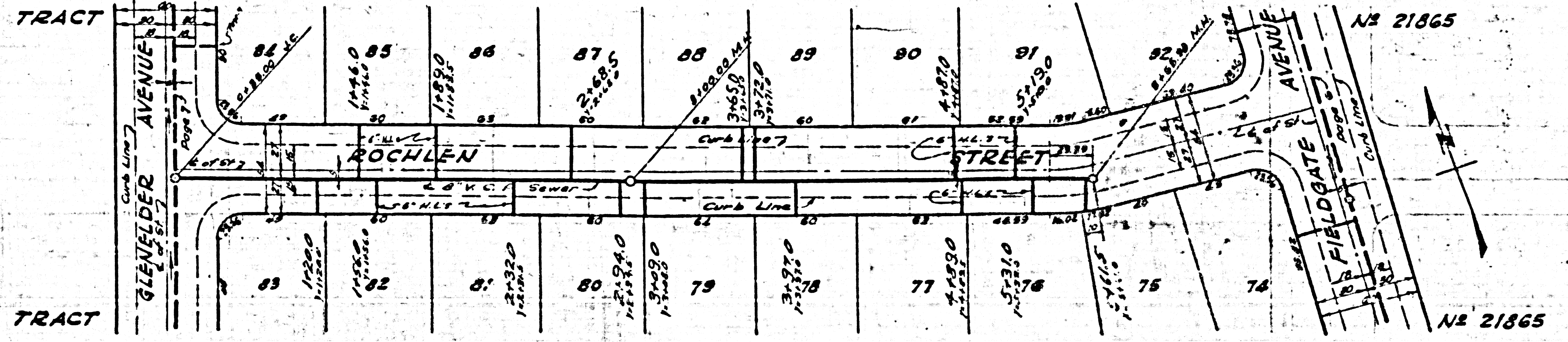
22,699



21865

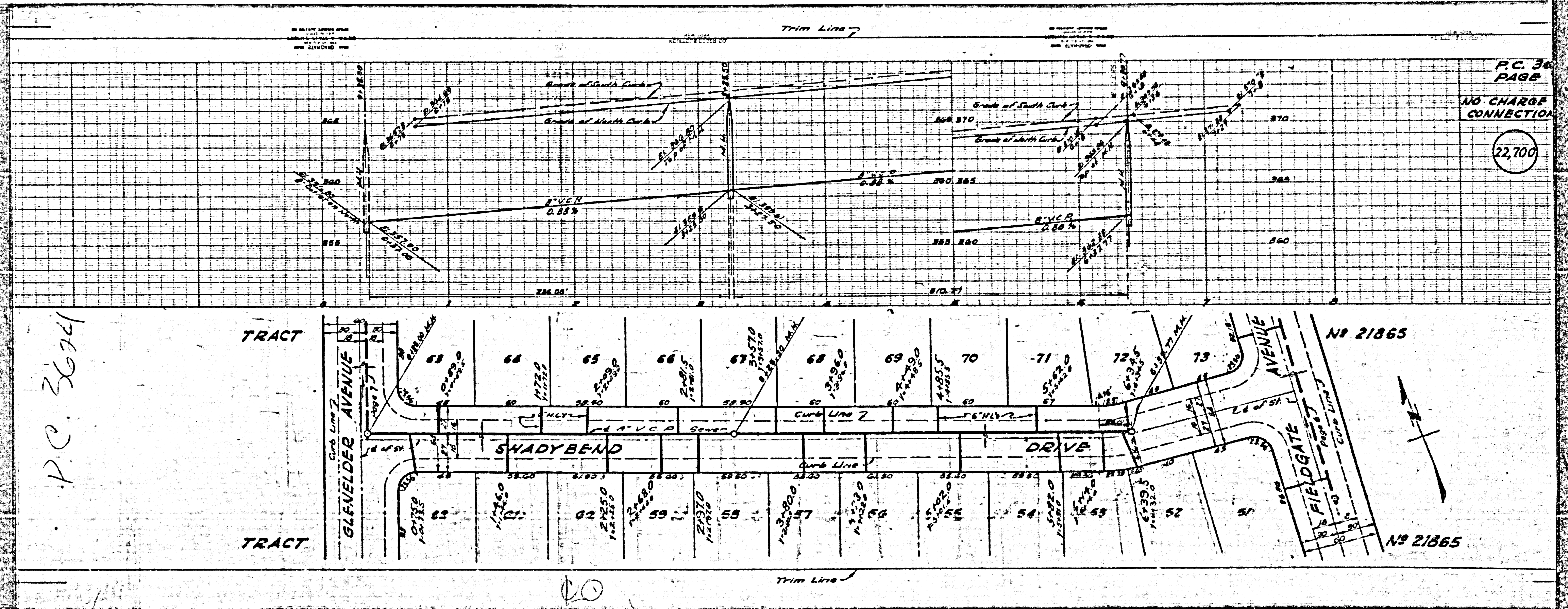


21865



(2)

Trim Line



P.C. 36
PAGE
NO CHARGE
CONNECTION

22,700

P.C. 3674

No 21865

No 21865

CO