

P.C. 3632
PAGE 2

CHARGE CONNECTIONS

of W.R.

1968

TEMPLE

BENCH MARK:

B.M. FC 108-16, Elev. 488.811, F.B. 1358, pg. 9
N. end of E. Headwall of Con. Cist. on TASSI CORNER ST.
150' S. of N.E. Cor. of Lot 3, TRACT NO. 2167

Rd. Dept. Data for same B.M. = EL. 400.875 as shown on Road Plans for TRACT NO. 21607.

CONNECTION CHARGES AS INDICATED
- 3 x Circle 10-21-55

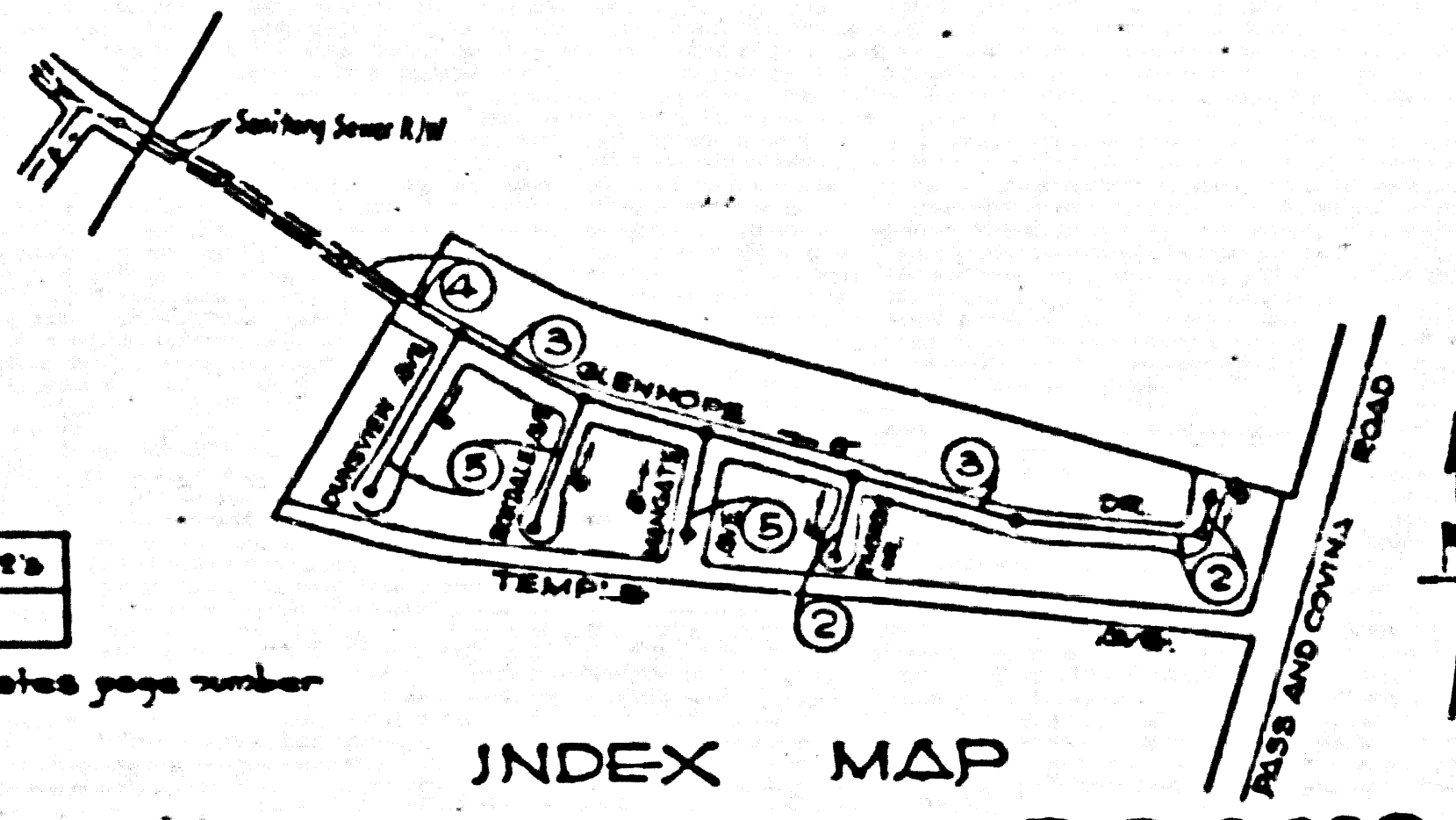
PUEENTE BLDG. DIST. No 2

NOTE:
Provide stakes on the property lines or property lines produced at right angles to the sewer line at the center line of each manhole.
No representative of the County Engineer will survey or layout any portion of the work.
The owner or his authorized representative shall furnish the County Engineer with grade sheets and stations for all house laterals and Y branches and shall provide stakes for them at their proper locations with stationing plainly marked. Any change in location shall be requested in writing by the owner or his representative.
No revisions shall be made in these plans without the approval of the County Engineer.

1. Use standard manhole frames and covers, S-a-117.
2. Use standard strength pipe except as noted.
3. Use cement mortar for all vitrified clay pipe joints.
4. Resurface all trench within paved area to meet L. A. County Road Dept. or California State Highway Dept. requirements in accordance with permit.
5. Encase four feet of sewer at points of interference with poles, S-a-119.
6. House laterals to be constructed with inverts at property line _____ feet below curb grade except as noted.
7. All structures shall be brick sewer structures, S-a-104.
8. For allowable leakage test, use Formula No. _____ Spec's. Sec. 51.
9. Manhole tops in unimproved Rights-Of-Way to be 6" above finish grade.

Sheet No	Page No's
1	1-B

Note: Figure in circle indicates page number



INDEX MAP
TRACT No 21607 P.C. 3632
SCALE: 1"=40'

Checked 12-19-55 Nelson

**PROFILE, ALIGNMENT AND GRADE OF
SANITARY SEWERS
TO BE CONSTRUCTED IN**

TRACT No. 21607

**PRIVATE CONTRACT NO. 3632
W. S. 38**

1 SHEET

Scale: VERT. 1"=4'
HORIZ. 1"=40' **JULY 1955**

PREPARED IN THE OFFICES OF
A. G. ROSENTHAL & ASSOCIATES

Arthur G. Rosenthal
Reg. C. E. No. 8808

FOR LEGEND SEE PLAN NO. S-a-64

NOTE:
Grades to which this improvement is to be constructed are shown on plans and profiles. Grade points for top of curbs, center line of streets, or center line of alleys are shown by circles on profiles. At all points between designated points the grade shall be established so as to conform to a straight line drawn between said designated points.
Elevations are in feet above U.S.G.S. datum or mean sea level.
This drawing and the data hereon are hereby made a part of the specifications.
Work shall be constructed according to specifications on file in the office of the County Engineer and shall be prosecuted only in the presence of the County Engineer.
Before work can be started, the contractor must obtain a permit to excavate in County streets from the L. A. County Road Dept., 108 W. 2nd St. and make a deposit with the County Engineer, 508 Pan American Building 215 S. Baseline, sufficient to cover the cost of construction inspection and record plans.
Approval of this plan by the County of Los Angeles does not constitute a representation as to the accuracy of the location of or the existence or non-existence of any underground utility, pipe, or structure within the limits of this project. This note applies to all sheets.
If work is to be done in a State Highway, a permit must be obtained from the State of California, Division of Highways, 120 South Spring Street.

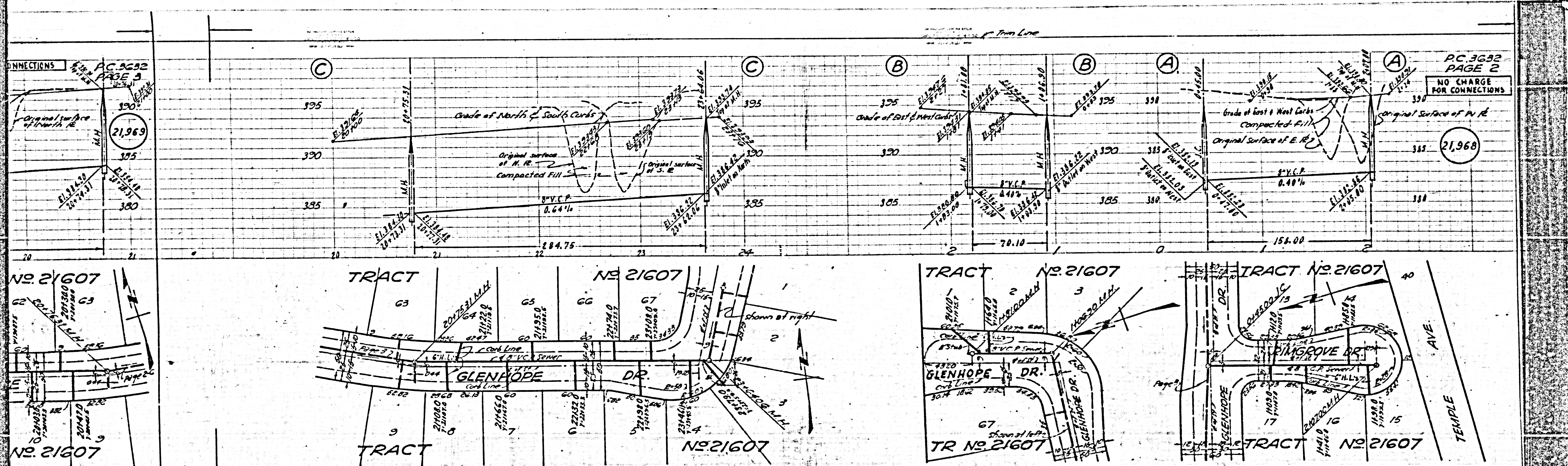
COUNTY OF LOS ANGELES, CALIFORNIA
Approved, John A. Lambler, County Engineer
Approved, A. M. Raven
Checked by: *R. K. Kuhn* 10-31-55
Office of County Engineer, Reg. C. E. No. 7860

P.C. 3632
PAGE 1

21,967

TRACT No. 21607

P.C. 3632
PAGE 1

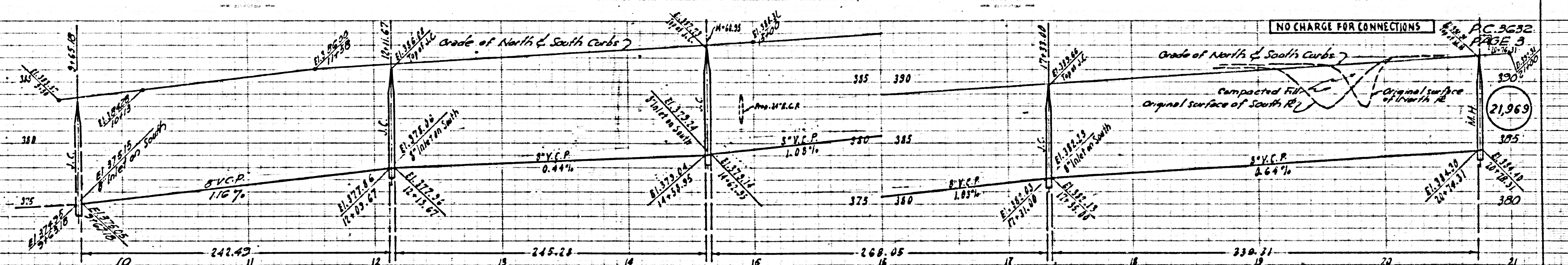


(17)

PC 3632
PAGE 4

CHARGES
INDICATED

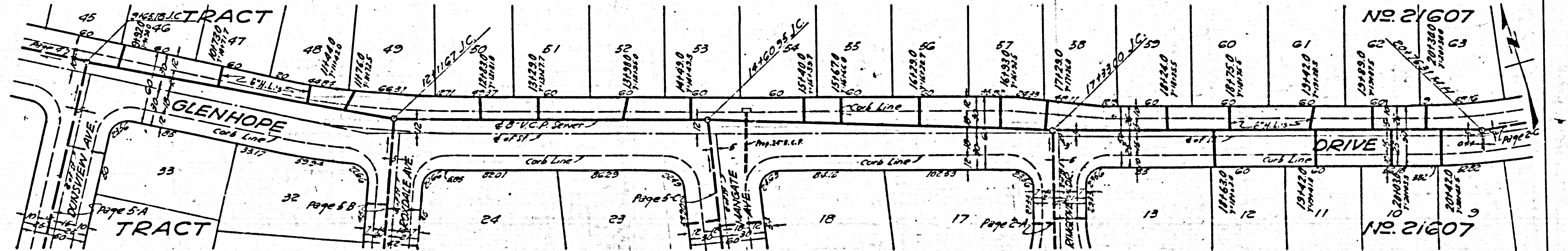
21,970



NO CHARGE FOR CONNECTIONS

PC 3632
PAGE 3

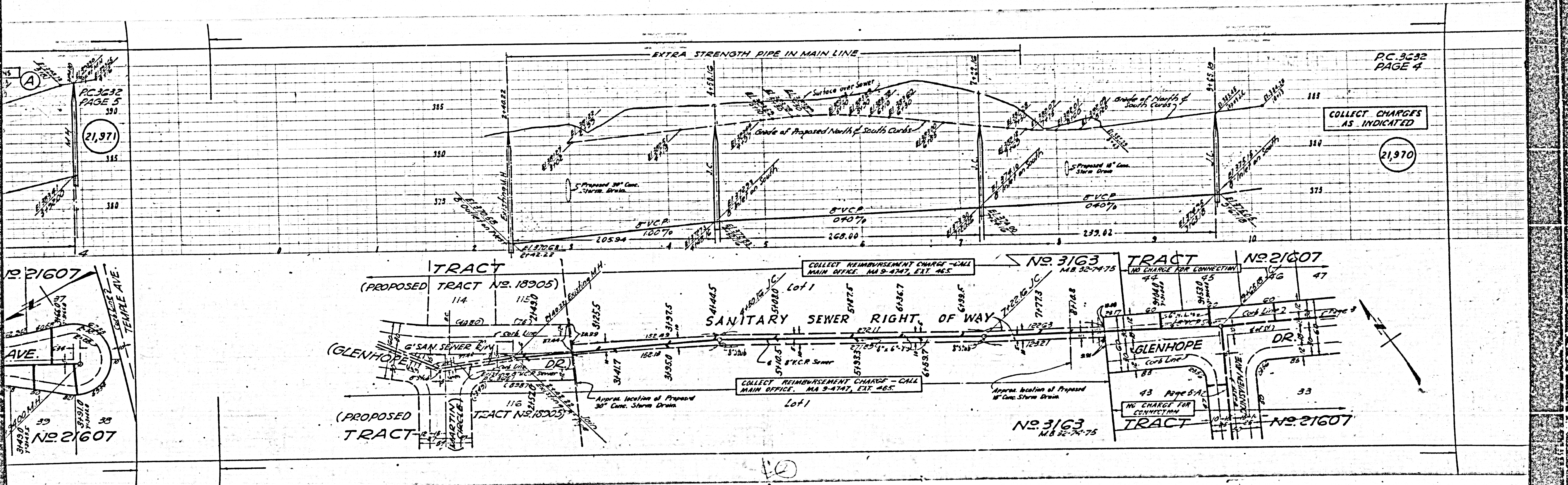
21,969



13

COLLECT CHARGES
AS INDICATED

21,970



21,971

NO. 21607

TEMPLE AVE.

NO. 21607

NO. 21607

NO. 21607

NO. 21607

NO. 21607

NO. 21607

