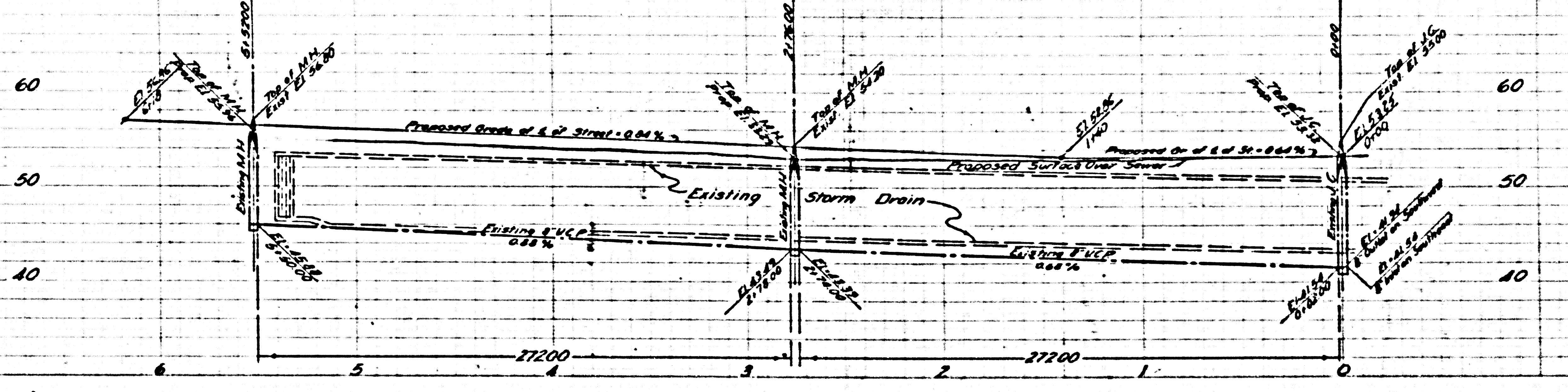
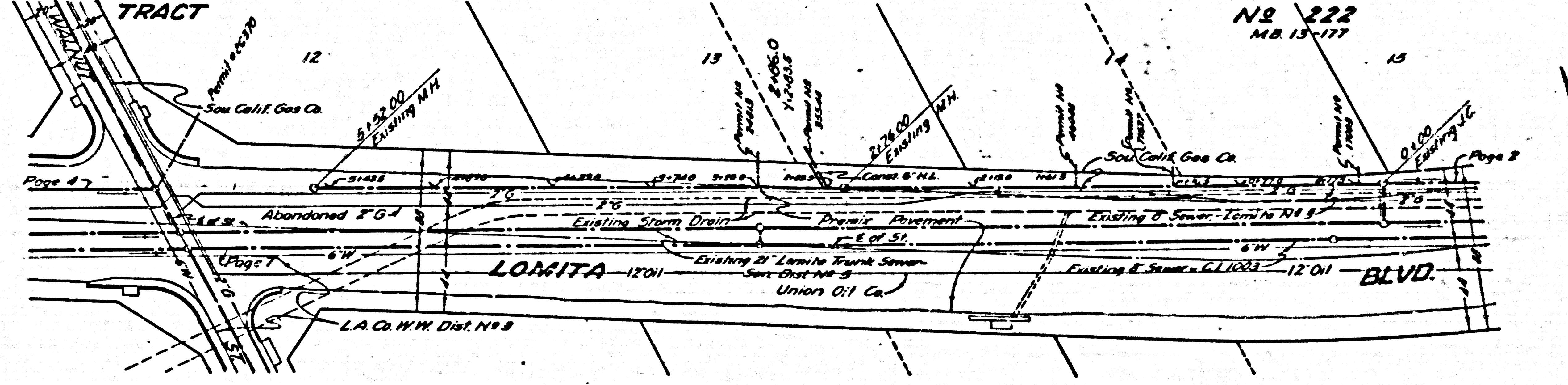


5



PC 3635
 J.N. 0778.32
 Sheet 1
 Page 3
 Double Scale

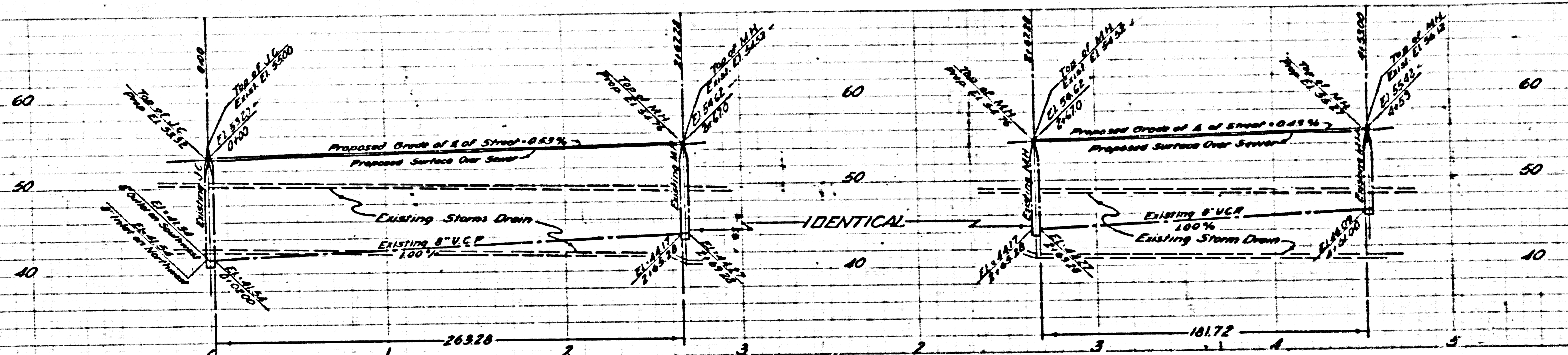
26,109



NR 222
 MB 13-177

Page 2

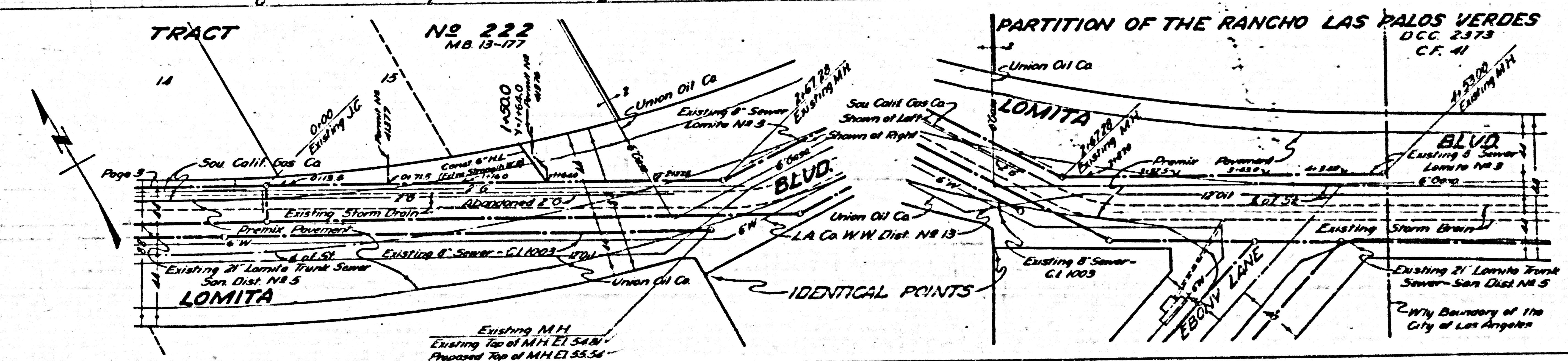
10



PC 3635
 JN 0778.32
 Sheet 1
 Page 2
 Double Scale

26,108

B.M. L-80 Δ 56.06 L.B. 424
 Lomita Blvd. 75' W. of Angle
 Bf' spk. N side of Blvd. in side



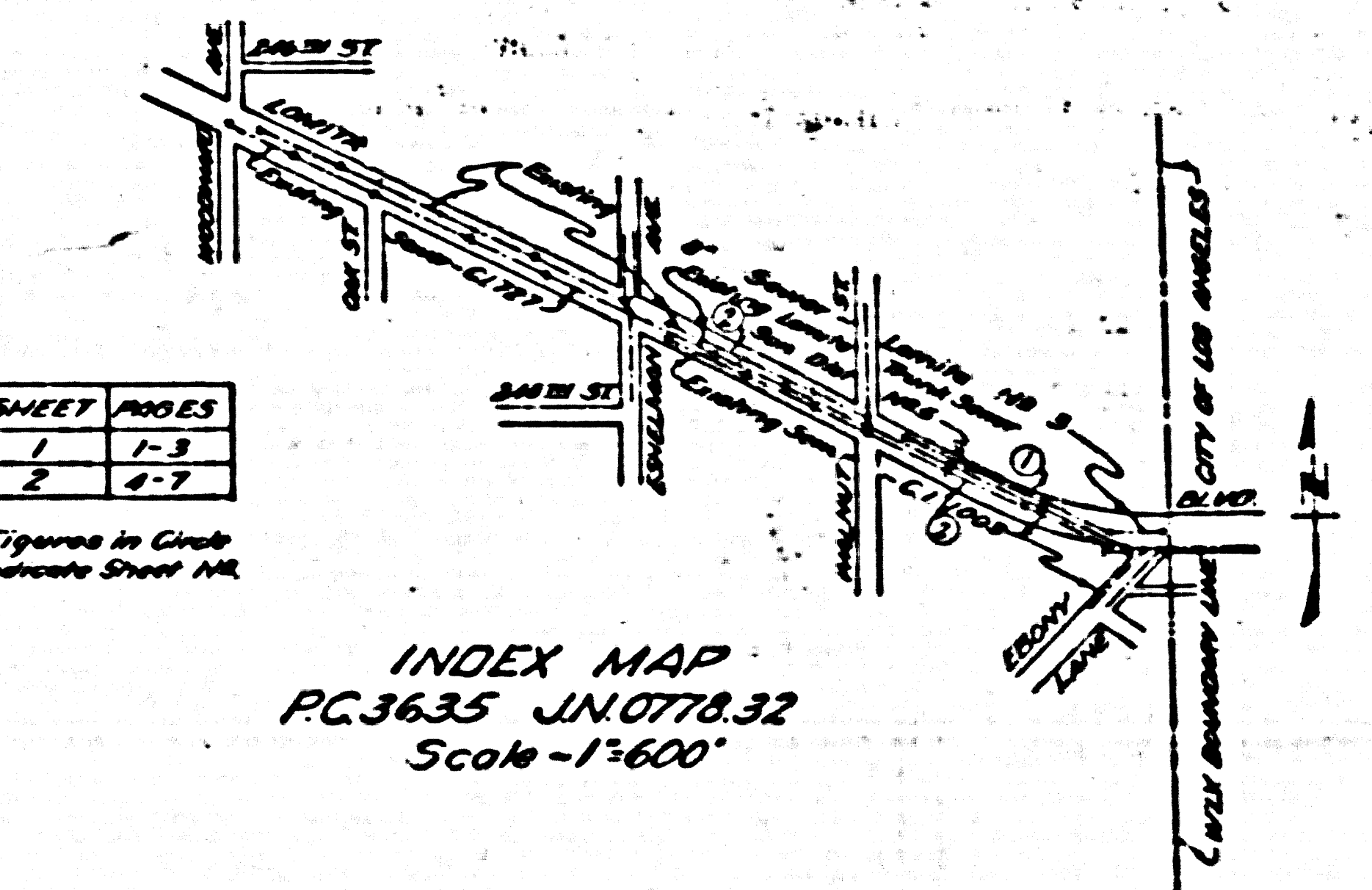
26

B.M. L-80 - El. 56.010 L.B. 424 pg. 28
 Lomita Blvd. 75' W. of Angle W. of Red Wilm.
 81' Spt. N. side of Blvd. in sidewalk to house -

DOUBLE SCALE
LOMITA BUILDING DISTRICT NO 7L
 USE STANDARD STRENGTH PIPE, EXCEPT AS NOTED.
 USE CEMENT MORTAR FOR ALL VITRIFIED CLAY
 PIPE JOINTS.
 HOUSE LATERALS TO BE RECONSTRUCTED WITH
 INVERTS AT PROPERTY LINE 6 FT. BELOW
 PROPOSED GRADE OF CENTER LINE OF STREET
 AND RECONNECTED.
 BRICKWORK ON ALL SEWER STRUCTURES SHALL BE
 REMOVED TO A POINT 2.5 FT. BELOW THE
 SURFACE AND REBUILT TO FINISHED GRADE,
 EXCEPT STRUCTURES ON THE SANITATION
 DISTRICT NO 5 TRUNK SEWER.

CASH CONTRACT NO. 30775
 PROFILE, ALIGNMENT AND GRADE OF
SANITARY SEWERS
 TO BE CONSTRUCTED IN
LOMITA BLVD.
 BETWEEN WESTERLY BOUNDARY OF CITY OF
 LOS ANGELES AND WOODWARD AVENUE
 PRIVATE CONTRACT NO. 3635 - JOB NUMBER 0778.32
 PLAN NO. 2
SHEET 1 OF 2 SHEETS

VERT. SCALE: 1" = 8'
 HORIZ. SCALE: 1" = 40'
 AUGUST 1935
 COUNTY OF LOS ANGELES, CALIFORNIA
 WILLIAM J. FOX COUNTY ENGINEER
 SUBMITTED *[Signature]* APPROVED *[Signature]*
 DISTRICT ENGINEER SANITATION DISTRICT



SHEET	FOOES
1	1-3
2	4-7

Figures in Circle
 Associate Sheet No.

checked 5-25-56 W. L. Linn

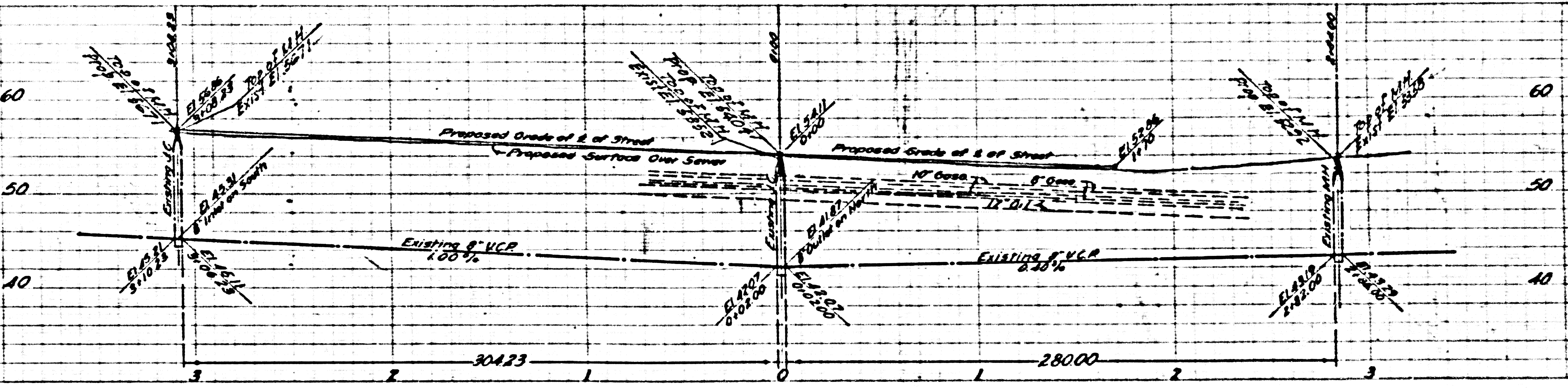
26,107

PC 3635
 SANITATION DISTRICT NO. 5
 LOMITA BLVD.
 26,107
 AUG. 1935

US checked
 R. S. 9/21/35
 80% EXAM'D
 9/21/35

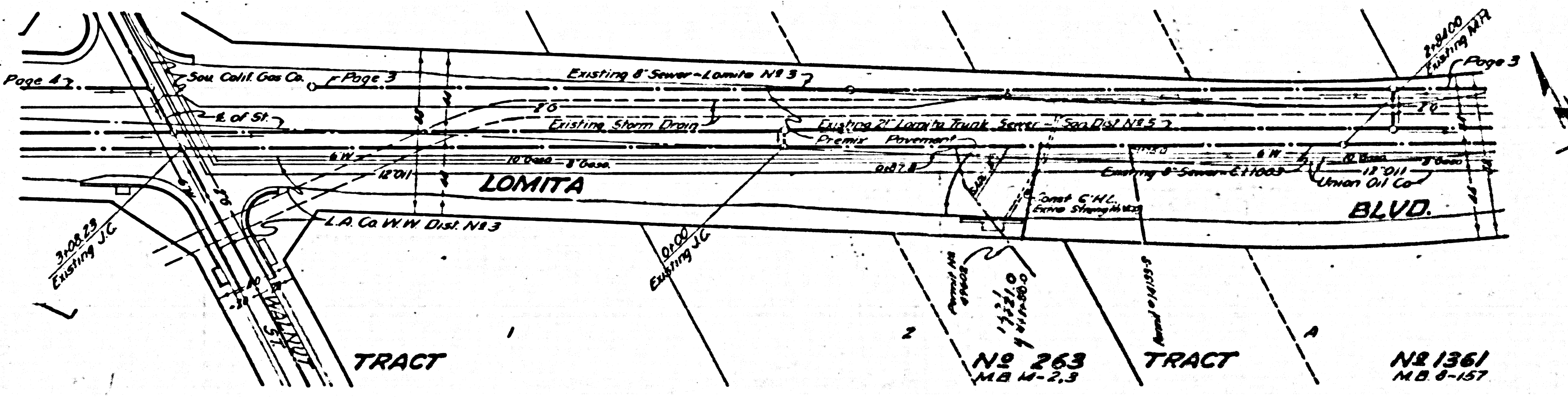
PC 3635
JIN 0778.32
Sheet 2
Page 7
Double Scale

Trim Line



PC 3635
JIN 0778.32
Sheet 2
Page 7
Double Scale

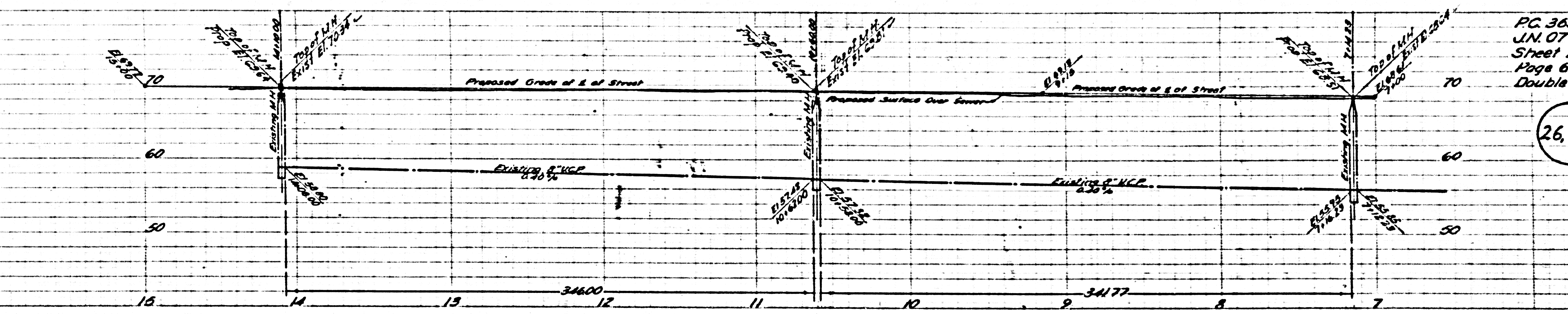
26,113



Trim Line

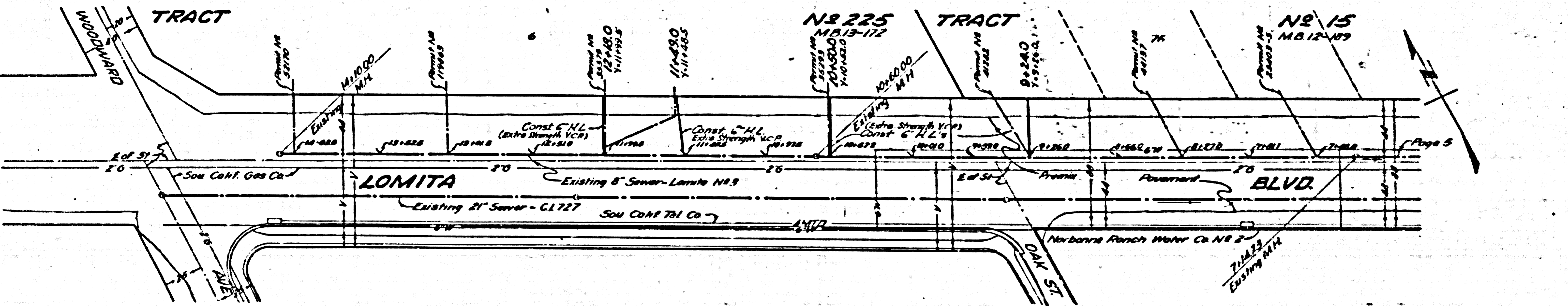
DI

B.M. L-51



PG. 3635
 J.N. 0778.32
 Sheet 2
 Page 6
 Double Scale

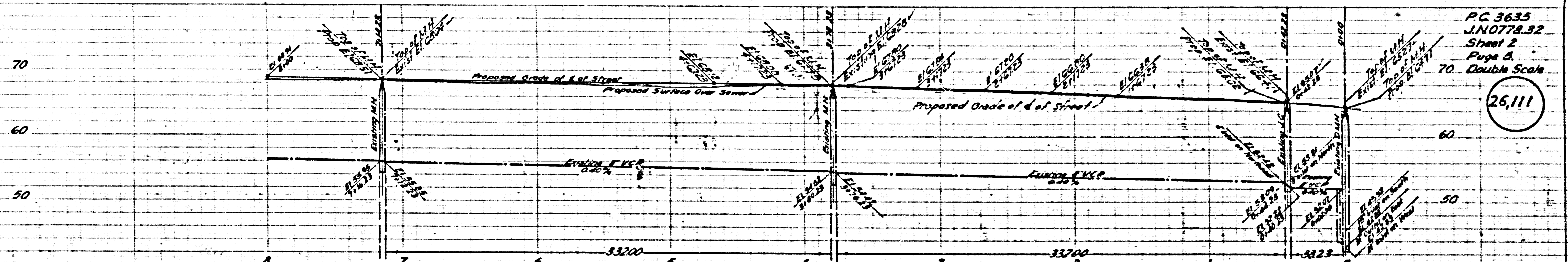
26,112



(2)

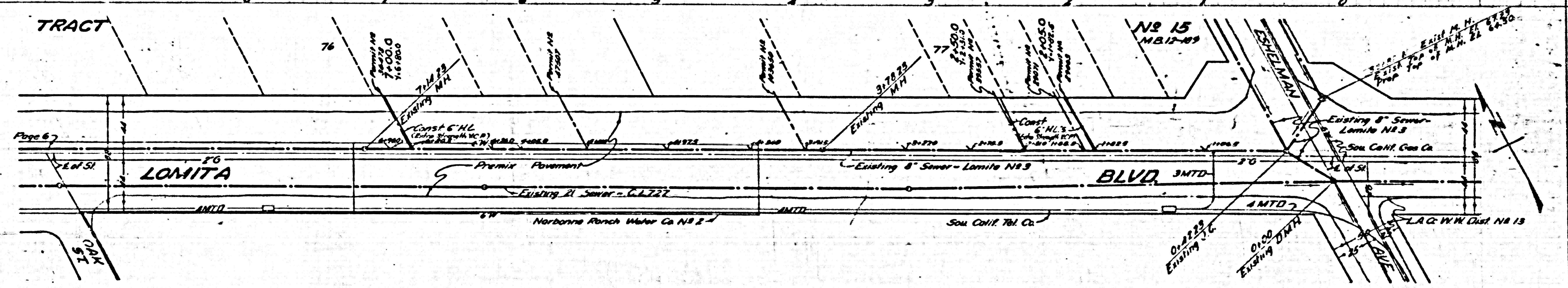
Page 5

Page 6



PG 3635
 JN0778.32
 Sheet 2
 Page 3
 70 Double Scale

26,111

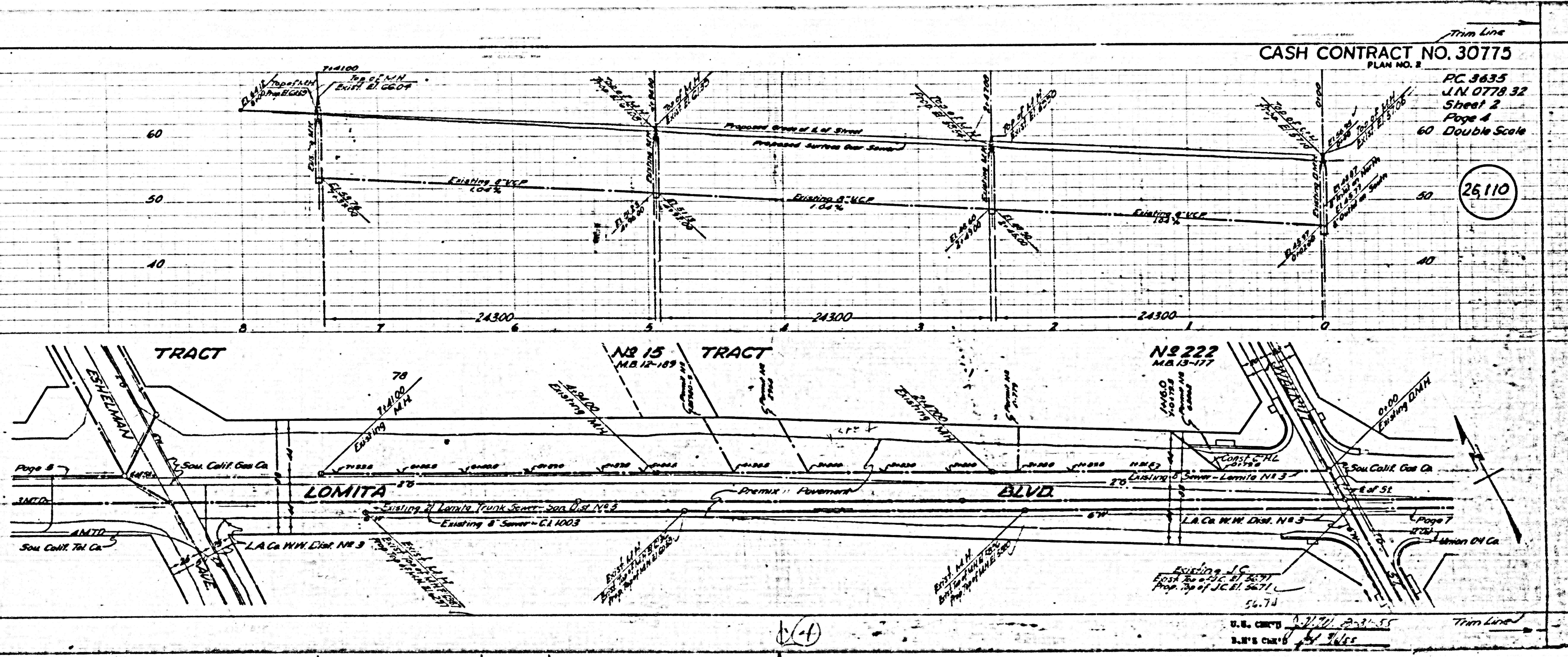


(2)

CASH CONTRACT NO. 30775
PLAN NO. 2

PC 3635
LN 0778.32
Sheet 2
Page 4
60 Double Scale

26110



30775
30775
30775

U.S. CIVIL ENGINEERS
30775