

PC3637  
PAGE 2.

NO CHARGE  
FOR CONNECTIONS

B.M. NR L 128, Elev. 90.29, C.S. LB 753, P 108,  
S.E. Cor. Eshelman Ave. & 238th St.  
Spire in Power Pole N 27307 E

LOMITA BLDG. DIST. No. 71

NOTE:

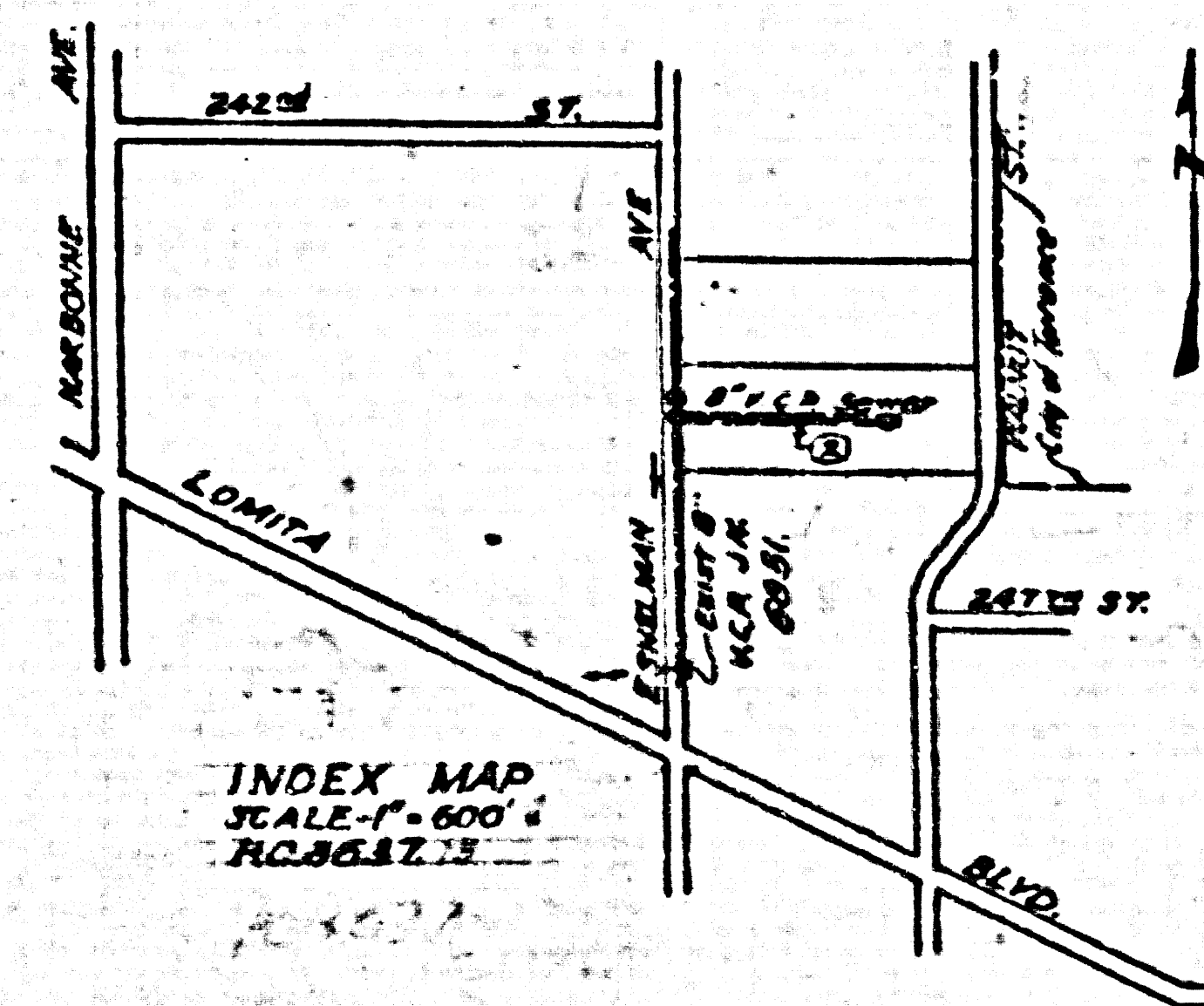
Provide stakes on the property lines or property lines produced at right angles to the cover line at the center line of each manhole.  
No representative of the County Engineer will survey or layout any portion of the work.  
The owner or his authorized representative shall furnish the County Engineer with grade sheets and stations for all house laterals and Y branches and shall provide stakes for them at their proper locations with stationing clearly marked. Any change in location shall be requested in writing by the owner or his representative.  
No revisions shall be made in these plans without the approval of the County Engineer.

1. Use standard manhole frames and covers, S-o-117.
2. Use standard strength pipe except as noted.
3. Use joint compound for all vitrified clay pipe joints.
4. Reinforce all trench within paved area to meet L.A. County Road Dept. or California State Highway Dept. requirements in accordance with permit.
5. Excise four feet of cover at points of interference with poles, S-o-119.
6. All structures shall be brick cover structures, S-o-104.
7. For airtight leakage test, use Formula No. 2, Sec. 51.
8. Manhole tops in unimproved Right-Of-Way to be 6" above finish grade.

TABLE

SHEET NO.	PAGES
1	1-2

NO CHARGE FOR CONNECTIONS  
L. Carter 2-27-56



PROFILE, ALIGNMENT AND GRADE OF  
SANITARY SEWERS  
TO BE CONSTRUCTED IN  
RIGHT OF WAY  
EAST OF  
ESHELMAN AVE

PRIVATE CONTRACT NO. 3637  
W. S. 28  
1 SHEETS

Scale: 1" = 40' DATE: (SEPT. 1955)  
PREPARED IN THE OFFICE OF  
HALE and CLAPP

FOR LEGEND SEE PLAN NO. S-o-64

NOTE:

Grade to which this improvement is to be constructed are shown on plans and profiles. Grade points for top of curb, center line of street, or center line of sewer are shown by circles on profiles. At all points between designated points the grade shall be established as to conform to a straight line drawn between said designated points.  
Elevations are in feet above M.S.L. & shall show decimal fractions of feet.  
This drawing and the data hereon are hereby made a part of the specifications.  
Work shall be constructed according to specifications on file in the office of the County Engineer and shall be prosecuted only in the presence of the County Engineer.  
Before work can be started, the contractor must obtain a permit to excavate in County streets from the L.A. County Road Dept., 108 W 2nd St and make a deposit with the County Engineer, 7-1-55, in full, \$100.00, sufficient to cover the cost of construction inspection and record plans.  
Approval of this plan by the County of Los Angeles does not constitute a representation as to the accuracy of the location of or the existence or non-existence of any underground utility, pipe, or structure within the limits of the project. This note applies to all sheets.  
If work is to be done in a State Highway, a permit must be obtained from the State of California, Division of Highways, 120 South Spring Street.

COUNTY OF LOS ANGELES, CALIFORNIA  
Approved, John A. Lambie, County Engineer  
Approved, A. M. Ream  
A. P. Collins  
S. J. [Signature]  
Office of County Engineer, Box 6, S. W. 2868

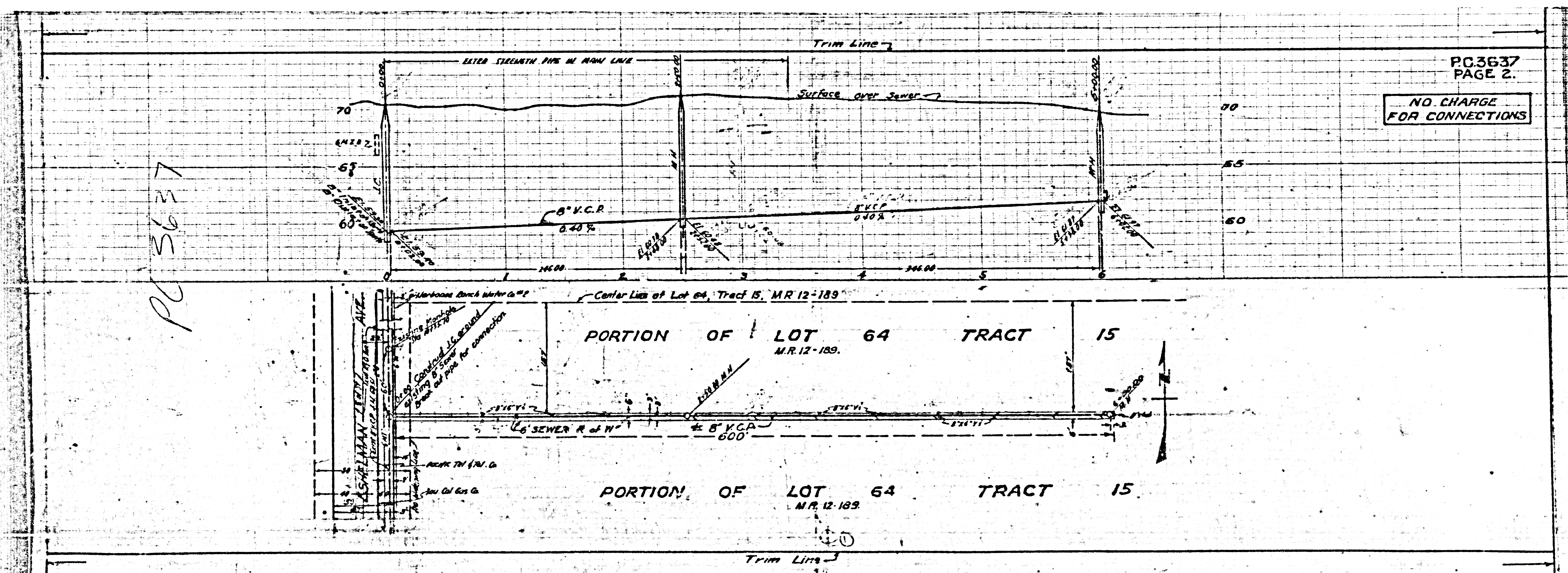
PC3637

PAGE 1

PC 3637 - 1 - 1/2" EAST OF ESHELMAN AVE

11/14/14

PC 3637



PC 3637  
PAGE 2.  
NO CHARGE  
FOR CONNECTIONS

Center Line of Lot 64, Tract 15, M.R. 12-189

PORTION OF LOT 64 TRACT 15  
M.R. 12-189

Trim Line