

C. 3641

PAGE 2

CHARGE FOR CONNECTIONS

1847

B.M. 5472  
L.S. in N.B. Cor. of War Bldg  
@ N.E. Cor. of Oak Bluff St  
San Bernardino St.  
ELEV. 455.136

SHEET NO	PAGE
1	1-3

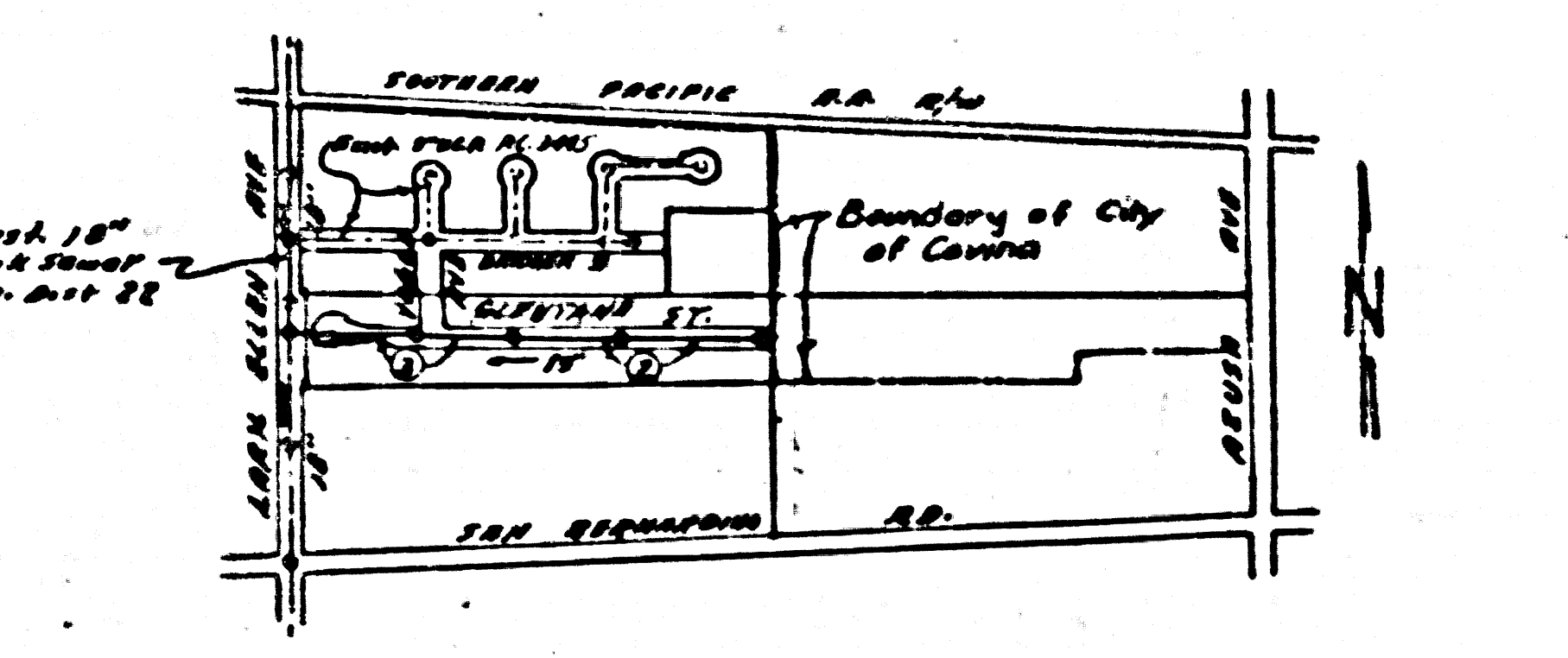
checked 11-21-55 M. Kern

Trim Lines

### SAN DIMAS BLDG. DIST. NO 10

#### NOTE:

- Provide stakes on the property lines or property lines produced at right angles to the sewer line at the corner line of each manhole.
- No representative of the County Engineer will survey or layout any portion of the work.
- The owner or his authorized representative shall furnish the County Engineer with grade sheets and stations for all house laterals and Y branches and shall provide stakes for them at their proper locations with stations plainly marked. Any change in location shall be requested in writing by the owner or his representative.
- No revisions shall be made in these plans without the approval of the County Engineer.
1. Use standard manhole frames and covers, S-o-117. *Except as Noted*
  2. Use standard strength pipe except as noted.
  3. Use cement mortar for all vitrified clay pipe joints.
  4. Resurface all trench within paved area to meet L.A. County Road Dept or California State Highway Dept. requirements in accordance with permit.
  5. Excavate four feet of sewer at points of interference with poles, S-o-119.
  6. House laterals to be constructed with inverts at property line  $\frac{1}{2}$  foot below curb grade except as noted.
  7. All structures shall be brick sewer structures, S-o-104. *Except as Noted*
  8. For allowable leakage test, see Formula No. 1, Spec's., Sec. 51.
  9. Manhole tops in unimproved Right-Of-Way to be 6" above finish grade.



INDEX MAP  
SCALE 1"=100'  
TRACT NO 16703  
PC 3641

COLLECT CHARGES  
AS INDICATED  
S.M. No. 9-38-55

before breaking into any existing structures  
and before final acceptance of this work,  
County Sanitation Districts should be notified  
in order that required inspection may be made.

PROFILE, ALIGNMENT AND GRADE OF  
SANITARY SEWERS  
TO BE CONSTRUCTED IN

### TRACT NO 16703

PRIVATE CONTRACT NO. 3641  
W. S. 47  
ONE SHEET

Scale: VERT. 1"=4'  
HORIZ. 1"=40'  
PREPARED IN THE OFFICES OF  
**HAROLD L. JOHNSON**

Checked by: *Harold L. Johnson* J.M.J.  
Sup. C.E. No. 7668

FOR LEGEND SEE PLAN NO. S-o-64

#### NOTE:

Grades to which this improvement is to be constructed are shown on plans and profiles. Grade points for top of curbs, center line of streets, or corner line of alleys are shown by circles on profiles. At all points between designated points the grade shall be established so as to conform to a straight line drawn between said designated points.

Elevations are in feet above U.S.G.S. datum or mean sea level.

This drawing and the data herein are hereby made a part of the specifications.

Work shall be constructed according to specifications on file in the office of the County Engineer and shall be prosecuted only in the presence of the County Engineer.

Before work can be started, the contractor must obtain a permit to excavate in County Streets from the L.A. County Road Dept., 408 N. 2nd St. and make a deposit with the County Engineer, 529 213 St. Broadway, sufficient to cover the cost of constructing inspection and record plans.

Approval of this plan by the County of Los Angeles does not constitute a representation as to the accuracy of the location of or the existence or non-existence of any underground utility, pipe, or structure within the limits of this project. This note applies to all sheets.

If work is to be done in a State Highway, a permit must be obtained from the State of California, Division of Highways, 120 South Spring Street.

COUNTY OF LOS ANGELES, CALIFORNIA

Approved, William J. Fox, County Engineer  
Approved, A. M. Ream  
CHIEF ENGR. CO. SAN DIST. NO. 22  
Checked by: *A.P. Collins*  
Checked by: *R. J. ...* 9-38-55  
Office of County Engineer, Sup. C.E. No. 7668

P.C. 3641  
PAGE 1

21,846

TRACT NR16703

P.C. 3641  
V. 1888.229  
0-12

P.C. 3641  
PAGE 3

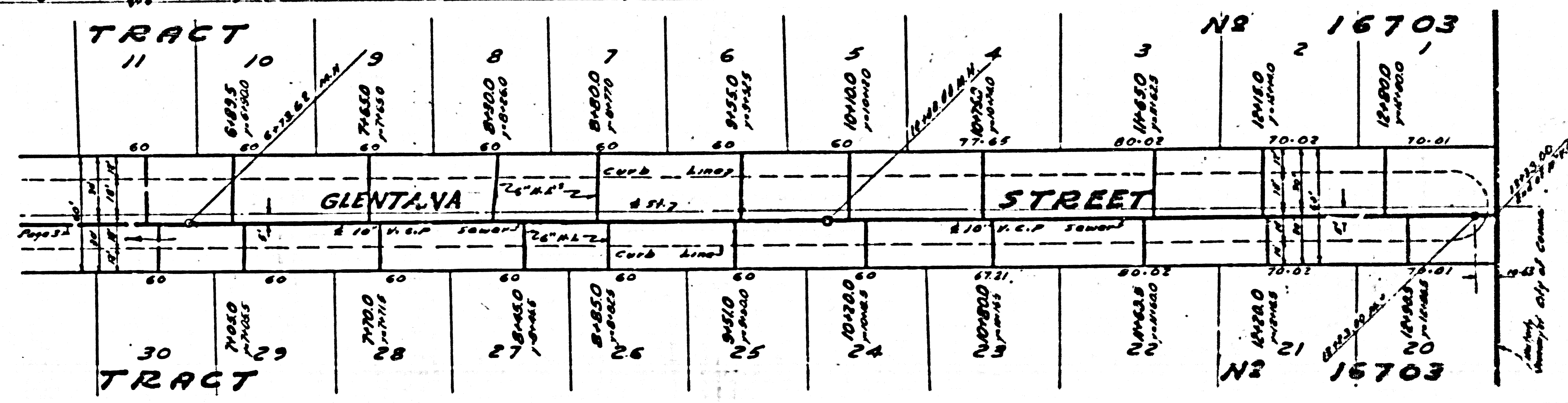
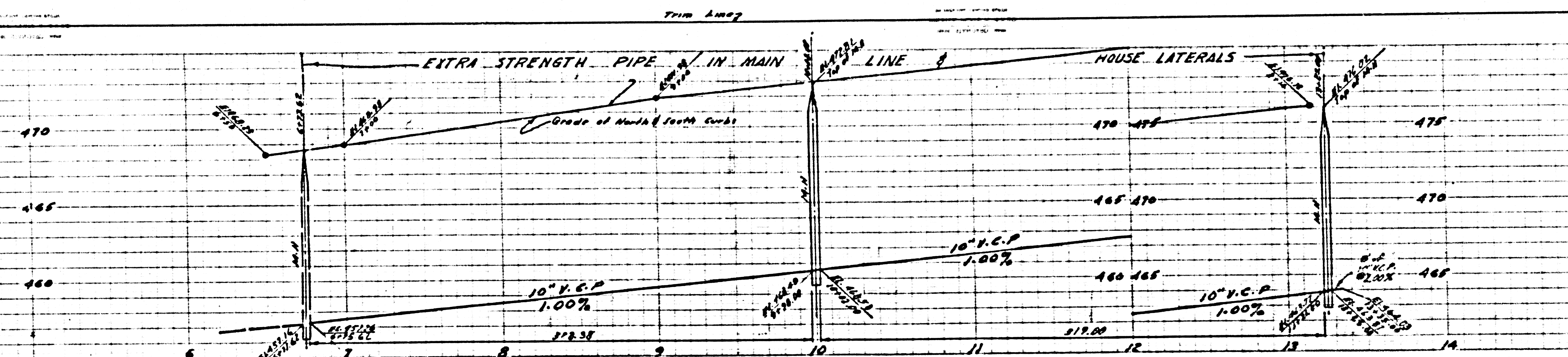
NO CHARGES  
INDICATED

21,848

P.C. 3641  
PAGE 2

NO CHARGE FOR  
CONNECTIONS

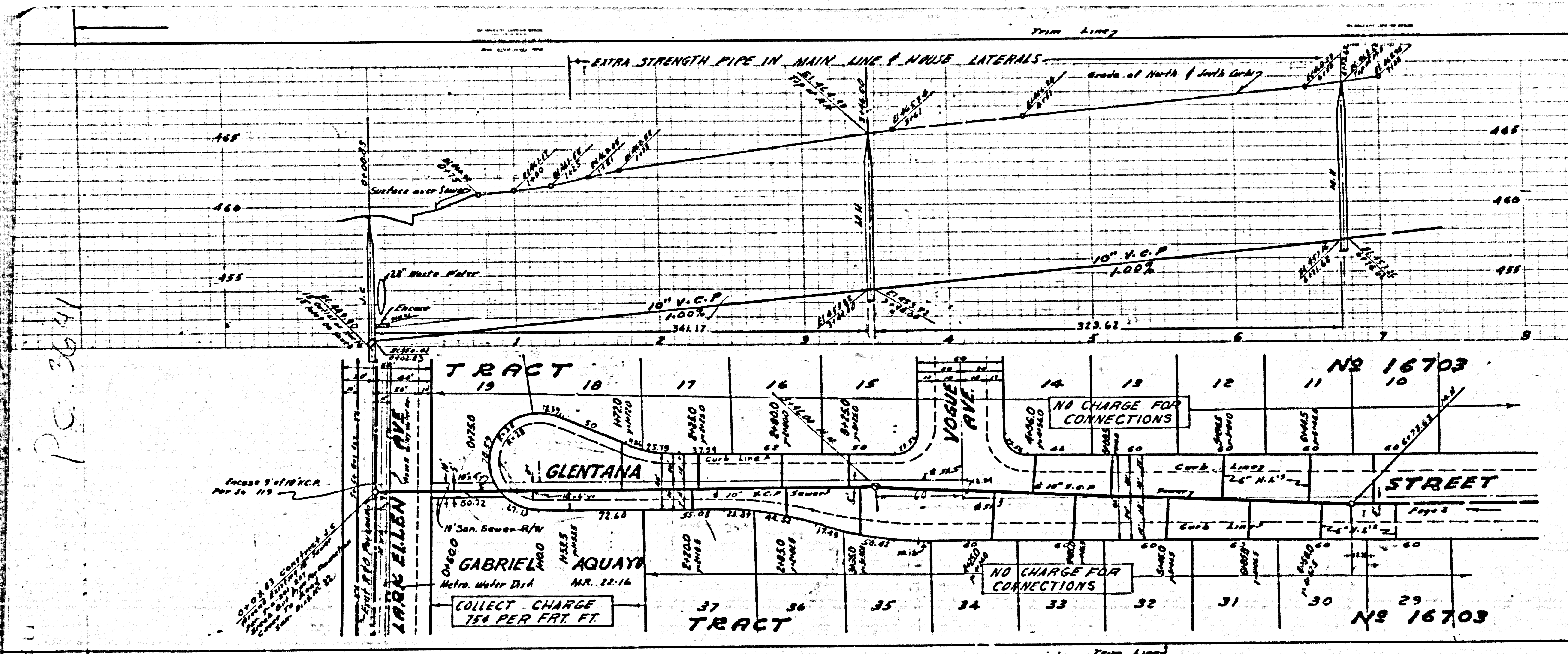
21,847



Page From Sheet

Page From Sheet

Trim Line



PC 3641

PG 3641  
PAGE 3

COLLECT CHARGES AS INDICATED

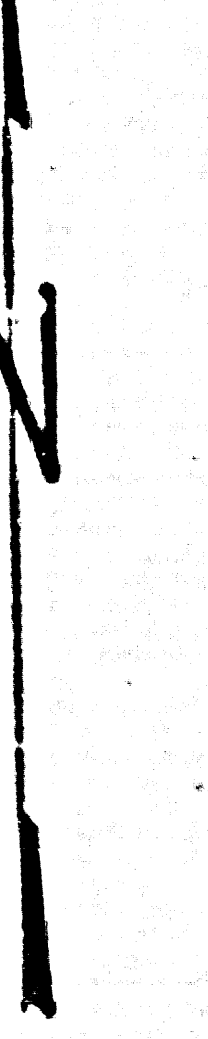
21848

Enclose 9' of 18" V.C.P. Per Lot 119

COLLECT CHARGE 75¢ PER FRT. FT.

NO CHARGE FOR CONNECTIONS

NO CHARGE FOR CONNECTIONS



Page Trim Line

20