

BM. 56415 Elev. 429.55
 County Surveyors Brass Cap Man.
 S. edge of intersec. of Transquillo Ave
 & Lark Ellen Ave.

PUENTE BLDG. DIST. NO 2

- NOTE:**
 Provide stakes of the property lines or property lines produced at right angles to the sewer line at the center line of each manhole.
 No representative of the County Engineer will survey or layout any portion of the work. The owner or his authorized representative shall furnish the County Engineer with grade sheets and stations for all house laterals and Y branches and shall provide stakes for them at their proper locations with stationing plainly marked. Any change in location shall be requested in writing by the owner or his representative.
 No revisions shall be made in these plans without the approval of the County Engineer.
1. Use standard manhole frames and covers, S-a-117.
 2. Use standard strength pipe except as noted.
 3. Use cement mortar for all vitrified clay pipe joints.
 4. Resurface all trench within paved area to meet L.A. County Road Dept. or Calif. State Highway Dept. requirements in accordance with permit.
 5. Encase four feet of sewer at points of interference with poles, S-a-119.
 6. House laterals to be constructed with inverts at property line, 6" feet below curb grade except as noted.
 7. All structures shall be brick sewer structures, S-a-104.
 8. Manhole tops in unimproved Rights-of-Way to be 4" above finish grade.
 9. For allowable leakage test, use Formula No. 1, Spec's, Sec. 51.

PROFILE, ALIGNMENT AND GRADE OF
SANITARY SEWERS
 TO BE CONSTRUCTED IN
TRACT NO 20028

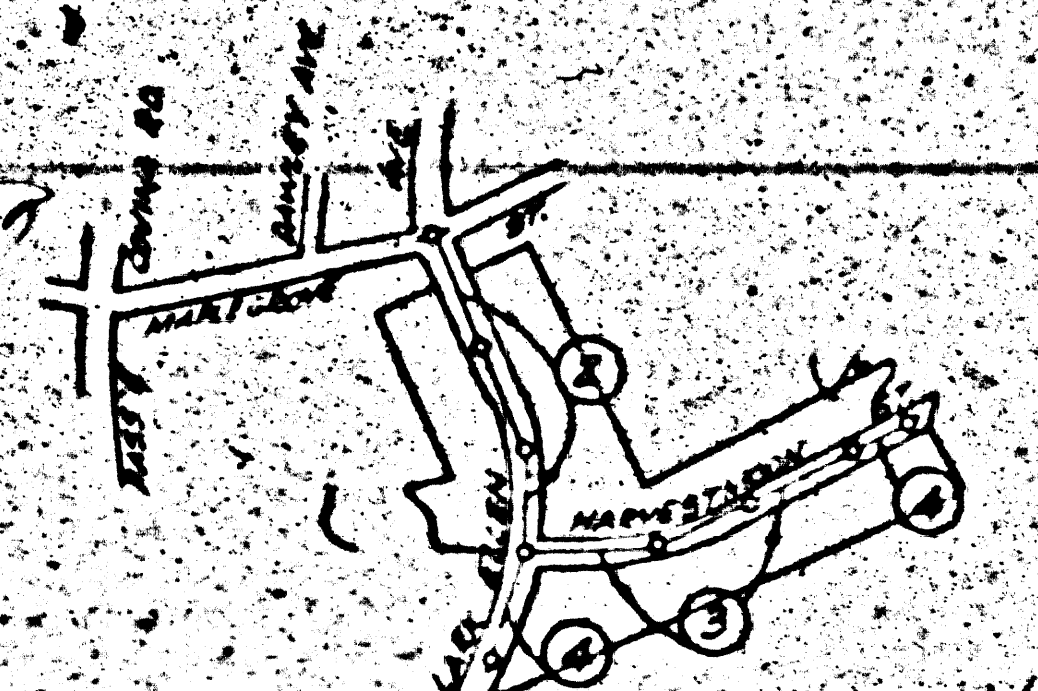
P.C. 3643
PAGE 1
DOUBLE SCALE

21812

PRIVATE CONTRACT NO. 3643
 W.S. 38
ONE SHEET
AUGUST 1955

Scale: $\frac{1}{4"} = 10'$
 PREPARED BY THE OFFICE OF
ADAMS & ELLS
 417
 540 G. St. S. - 6-55
 FOR LEGEND SEE PLAN NO. S-a-64

NOTE:
 Grades to which this improvement is to be constructed are shown on plans and profiles. Grade points for top of curbs, center line of streets, or center line of alleys are shown by circles on profiles. At all points between designated points the grade shall be established so as to conform to a straight line drawn between said designated points.
 Elevations are in feet above U.S.G.S. datum or mean sea level.
 This drawing and the data hereon are hereby made a part of the specifications.
 Work shall be constructed according to specifications on file in the office of the County Engineer and shall be prosecuted only in the presence of the County Engineer.
 Before work can be started, the contractor must obtain a permit to excavate in County streets from the L.A. County Road Dept., 108 W. 2nd St. and make a deposit with the County Engineer, Room 315, 255 So. Broadway, sufficient to cover the cost of construction inspection and record plans.
 Approval of this plan by the County of Los Angeles does not constitute a representation as to the accuracy of the location of or the existence or non-existence of any underground utility, pipe, or structure within the limits of this project. This note applies to all sheets.
 If work is to be done in a State Highway, a permit must be obtained from the State of California, Division of Highways, 120 South Spring Street.



Sheet	Page
1	1-4

NOTE: ISSUE NO PERMITS UNTIL
 OUTLET SEWER IS CONSTRUCTED
 CALL MAIN OFFICE FOR CLEARANCE.

**COLLECT CHARGES
 AS INDICATED
 FEB 28 1955**

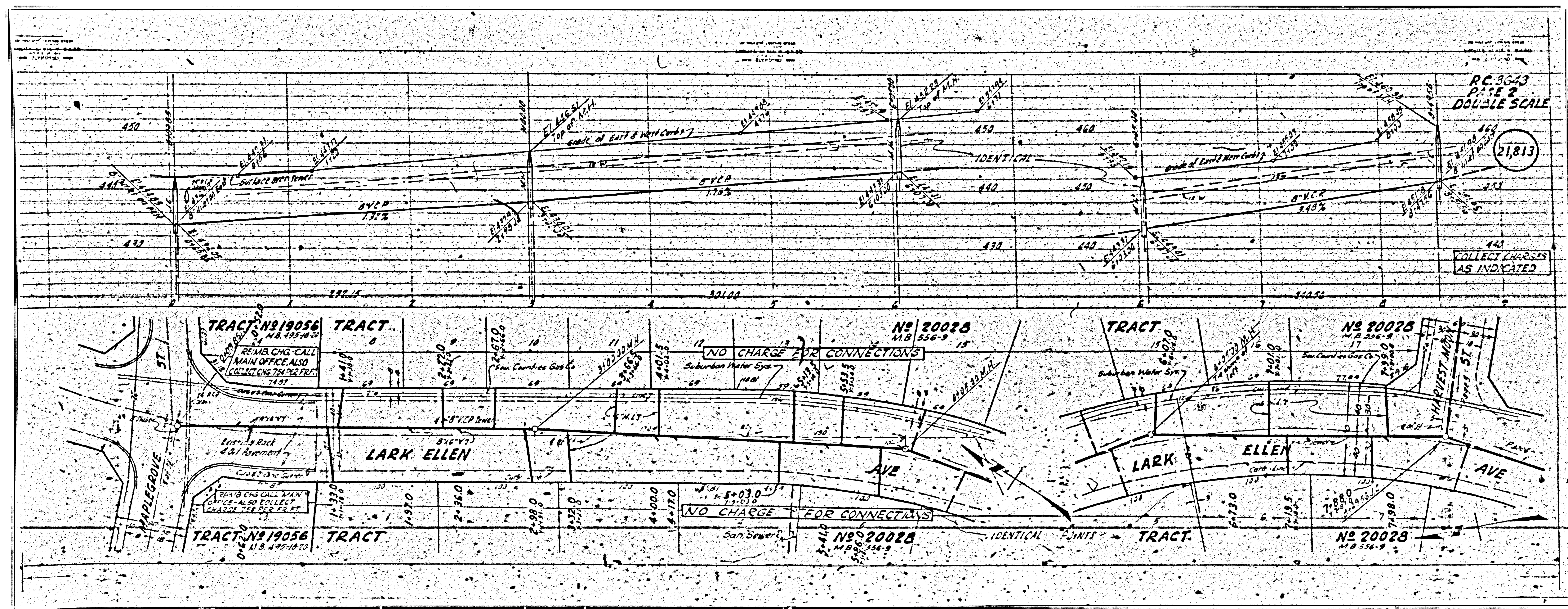
COUNTY OF LOS ANGELES, CALIFORNIA

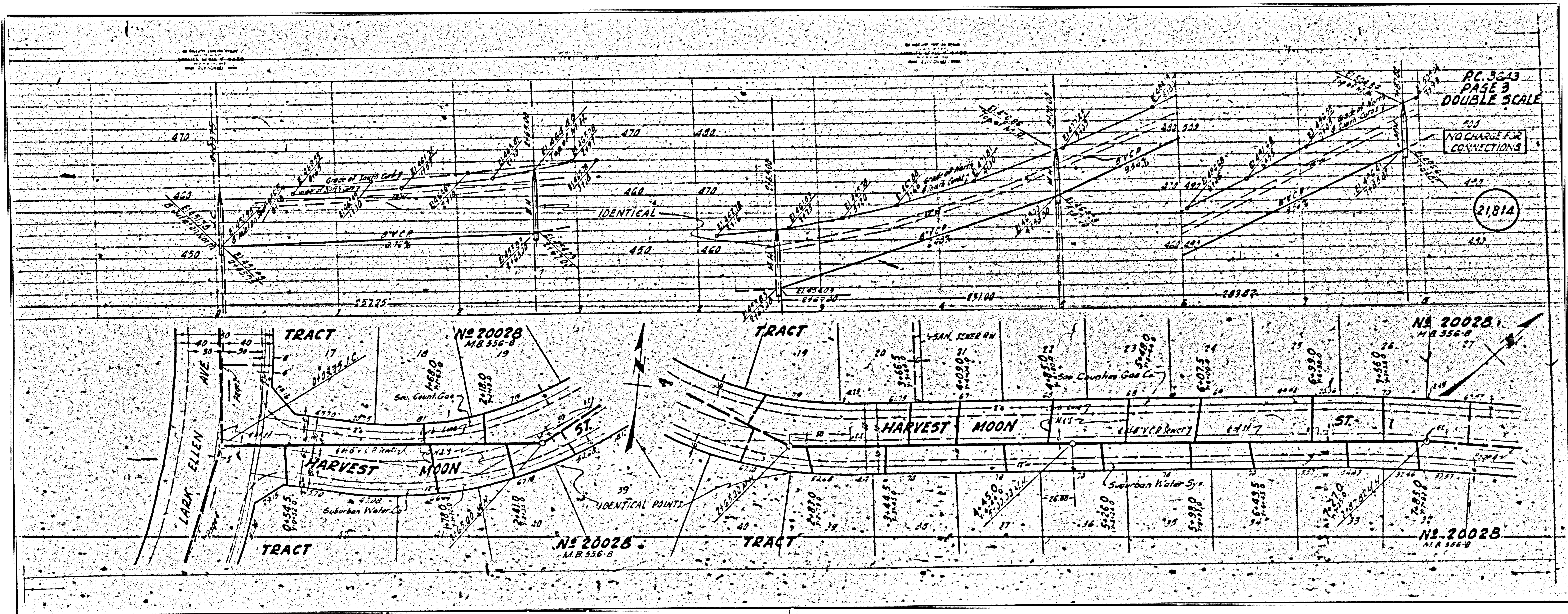
Approved, William J. Fox, County Engineer
 Approved, A. M. Rowe
 CHIEF ENG. CO. DIST. NO. 15
 9-18-55
 Office of County Engineer, Box G. E. No. 7866.

PC 3643
PAGE 2
DOUBLE SCALE

21,813

COLLECT CHARGES
AS INDICATED





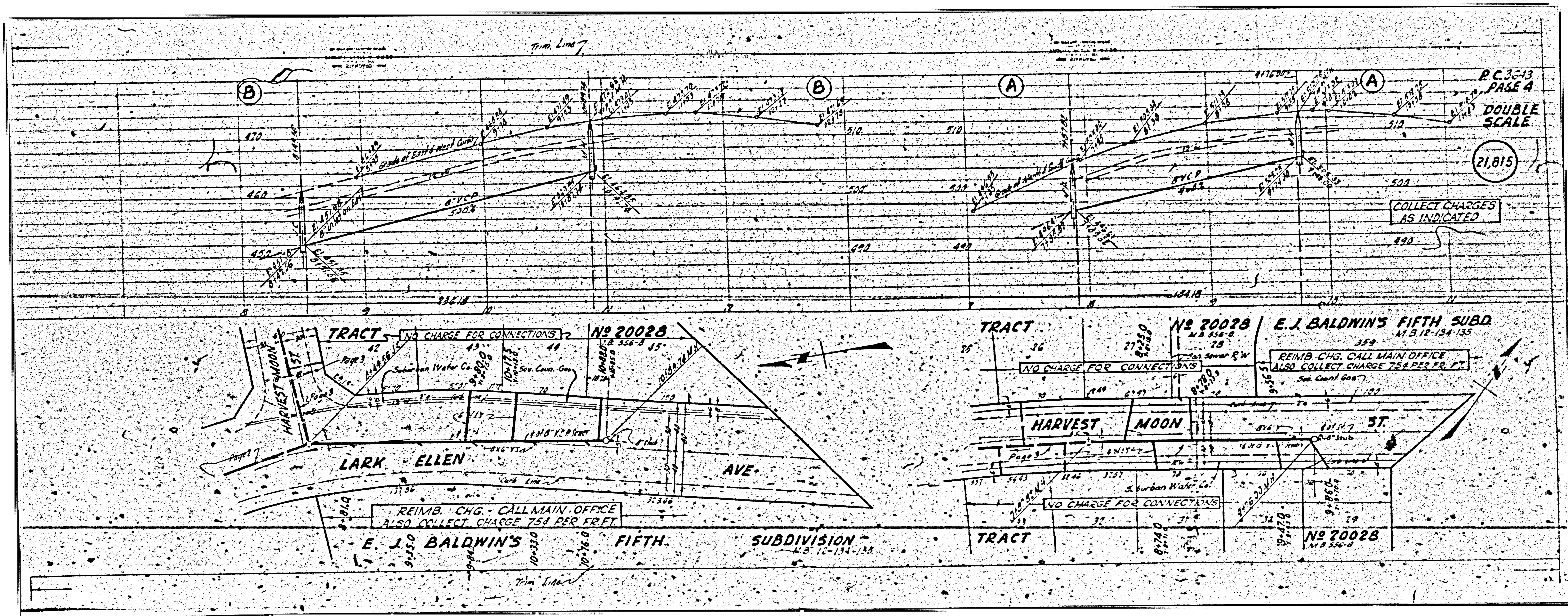
PC. 3643
PAGE 3
DOUBLE SCALE

NO CHARGE FOR
CONNECTIONS

21814

No. 20028
M.B. 556-B

No. 20028
M.B. 556-B



P.C. 3613
PAGE 4
DOUBLE
SCALE

(21,815)

COLLECT CHARGES
AS INDICATED

TRACT NO 20028
NO CHARGE FOR CONNECTIONS

TRACT NO 20028
NO CHARGE FOR CONNECTIONS

E.J. BALDWIN'S FIFTH SUBD
M.B. 12-134-135

REIMB. CHG. CALL MAIN OFFICE
ALSO COLLECT CHARGE 75¢ PER FR. FT.
See Const. Gas

REIMB. CHG. CALL MAIN OFFICE
ALSO COLLECT CHARGE 75¢ PER FR. FT.

NO CHARGE FOR CONNECTIONS

E. J. BALDWIN'S FIFTH SUBDIVISION
M.B. 12-134-135

TRACT NO 20028
M.B. 556-B