

3645
Page 2
CONNECTION CHARGES
AS INDICATED
197

SHADO
TRACT

B.M. SY 538 El. 48.659' 4.17'
6.5' of curb rd.
S.N. corner of Normandie & Ocean St.

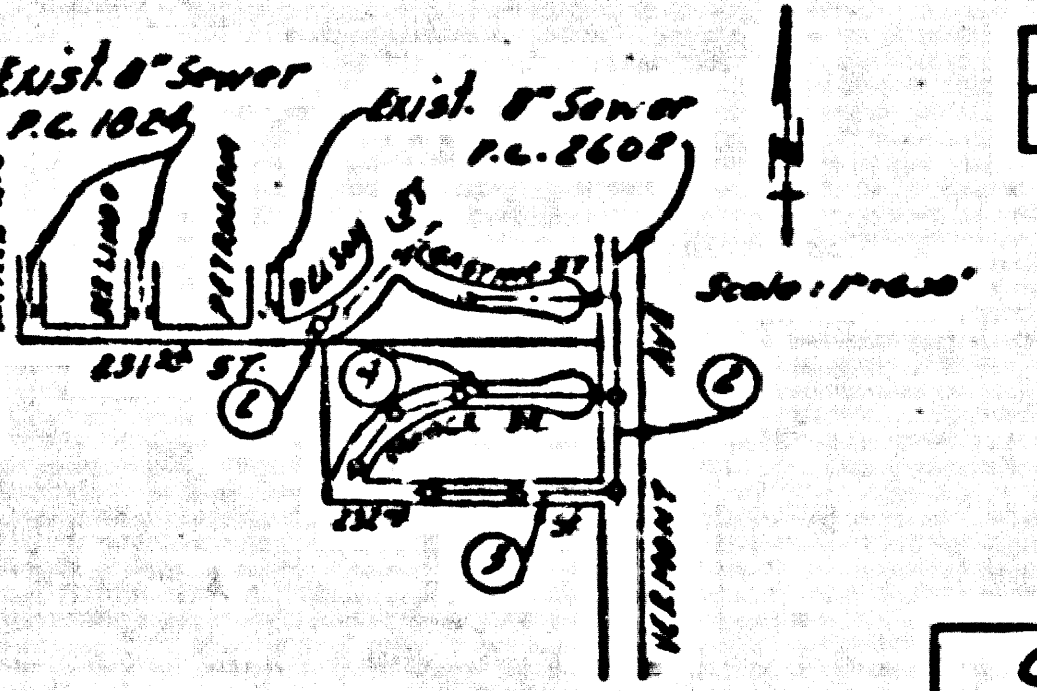
NOTE: LOMITA BLDG DIST N^o 7L

Provide stakes on the property lines or property lines produced at right angles to the sewer line at the corner line of each manhole.

No representative of the County Engineer will survey or layout any portion of the work. The owner or his authorized representative shall furnish the County Engineer with grade sheets and stations for all house laterals and Y branches and shall provide stakes for them at their proper locations with stationing plainly marked. Any change in location shall be requested in writing by the owner or his representative.

No revisions shall be made in these plans without the approval of the County Engineer.

1. Use standard manhole frames and covers, S-a-117.
2. Use standard strength pipe except as noted.
3. Use cement mortar for all vitrified clay pipe joints.
4. Resurface all trench within paved area to meet L.A. County Road Dept. or California State Highway Dept. requirements in accordance with permit.
5. Encase four feet of sewer at points of interference with poles, S-a-119.
6. House laterals to be constructed with inverts at property line, 6" feet below curb grade except as noted.
7. All structures shall be brick sewer structures, S-a-104.
8. For allowable leakage test, see Formula No. 1, Spec's., Sec. 51.
9. Manhole tops in unimproved Right-Of-Way to be 6" above finish grade.



INDEX MAP
TRACT N^o 20903
P.C. 3645

CONNECTION CHARGES
AS INDICATED
L.A. 9-22-55

Revised 2-14-56 Wblan

Q

Trim Line

PROFILE, ALIGNMENT AND GRADE OF
SANITARY SEWERS
TO BE CONSTRUCTED IN

TRACT N^o 20903

P.C. 3645
Page 1

22,196

PRIVATE CONTRACT NO. 3645
W. S. 28

ONE SHEET

Scale: VERT. 1" = 4'
HORIZ. 1" = 40'

AUG. 1955
PREPARED IN THE OFFICES OF

BARCLAY SURVEYING CO.

John A. Joyce
Reg. C.E. No. 2577

FOR LEGEND SEE PLAN NO. S-a-64

(4)

NOTE:

Grades to which this improvement is to be constructed are shown on plans and profiles. Grade points for top of curb, center line of street, or center line of pipe are shown by circles on profiles. At all points between designated points the grade shall be established so as to conform to a straight line drawn between said designated points.

Elevations are in feet above U.S.G.S. datum or mean sea level. This drawing and the data hereon are hereby made a part of the specifications. Work shall be constructed according to specifications on file in the office of the County Engineer and shall be constructed only in the presence of the County Engineer.

Before work can be started, the contractor must obtain a permit to excavate in County streets from the L.A. County Road Dept., 108 W. 2nd St. and make a deposit with the County Engineer, Rooms 310, 255 S. Broadway, sufficient to cover the cost of construction inspection and record plans.

Approval of this plan by the County of Los Angeles does not constitute a representation as to the accuracy of the location of or the existence or non-existence of any underground utility, pipe, or structure within the limits of this project. This note applies to all sheets.

If work is to be done in a State Highway, a permit must be obtained from the State of California, Division of Highways, 120 South Spring Street.

COUNTY OF LOS ANGELES, CALIFORNIA

Approved, William J. Fox, County Engineer

Approved, A. M. Rosen

Chief Clerk, SANITARY DIST. NO. 6

Checked by: R. E. H. 9-22-55
Office of County Engineer, Reg. C.E. No. 7860

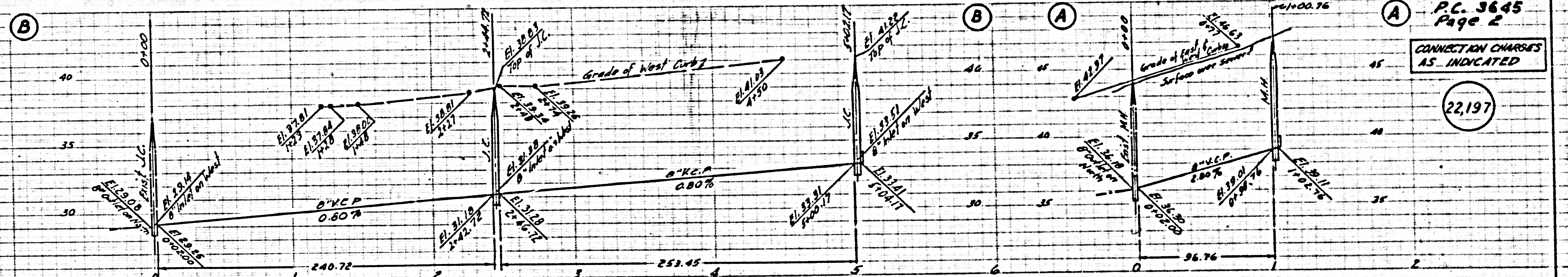
P.C. 3645 TRACT N^o 20903

Trim Line

C. 3645
Page 3

CONNECTION CHARGES
AS INDICATED

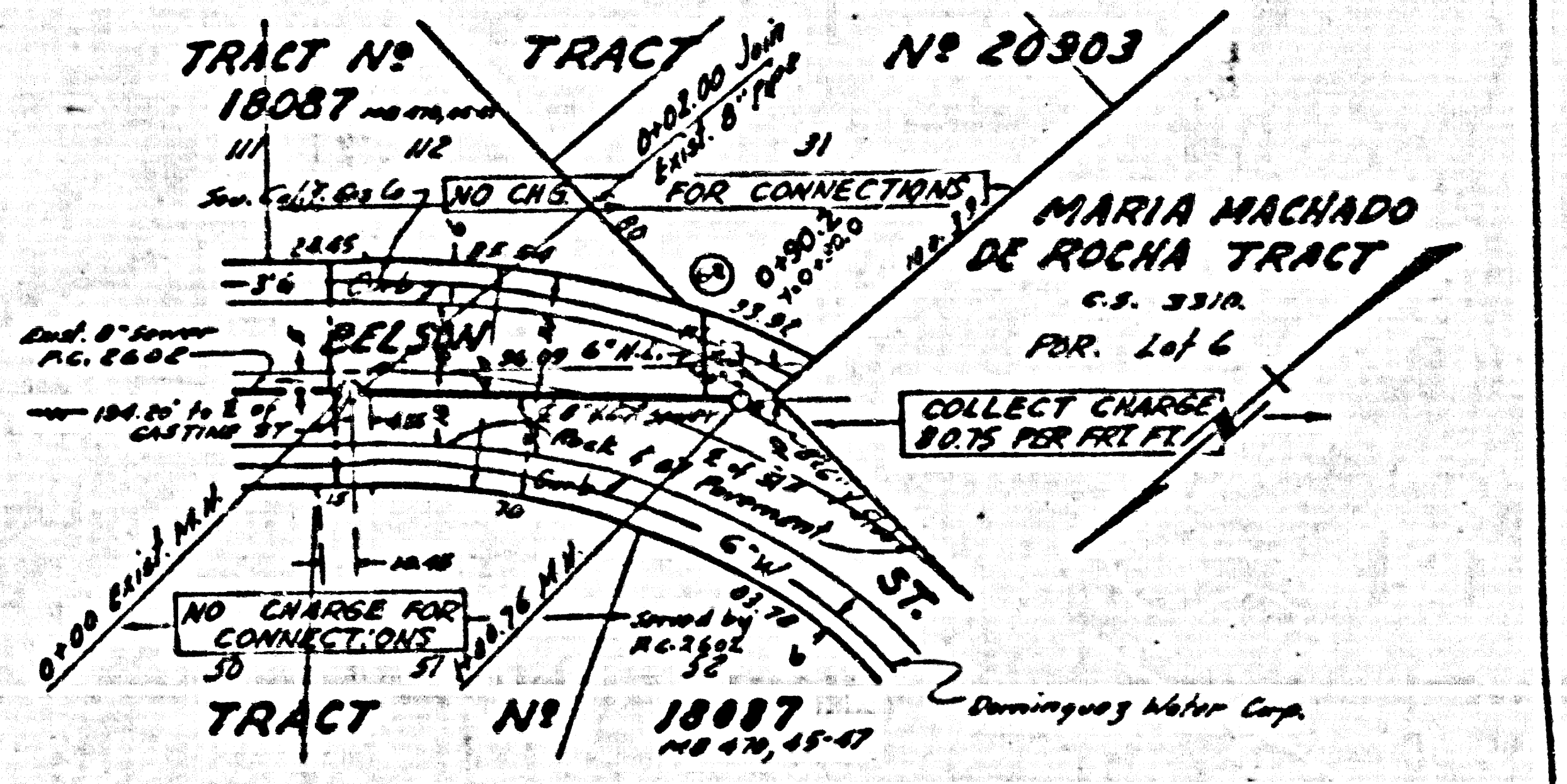
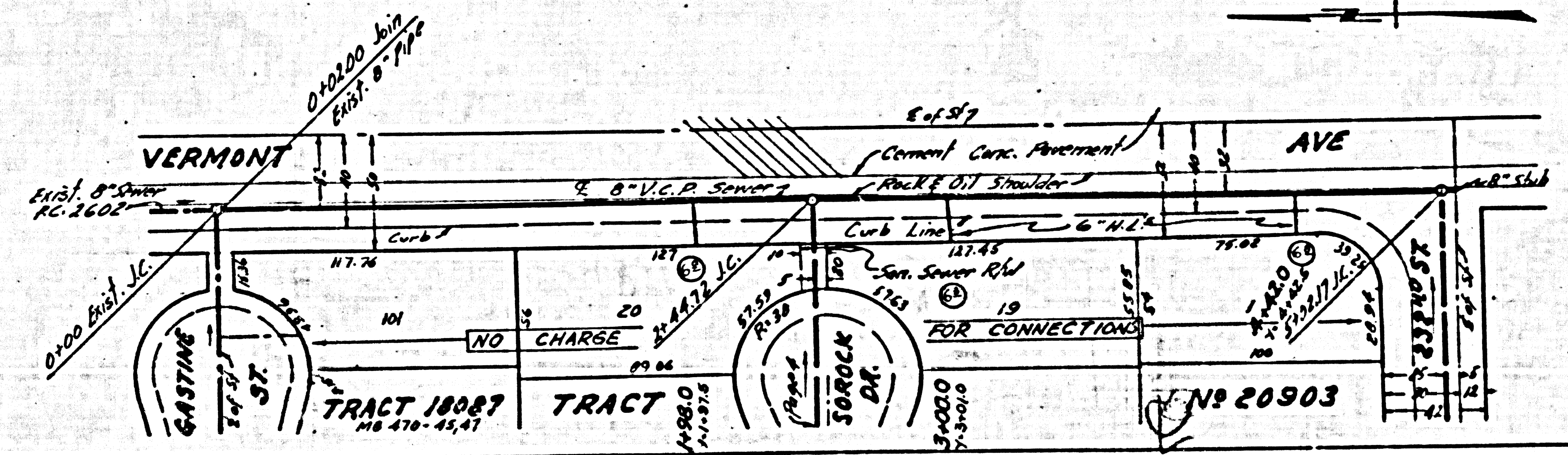
22,198



P.C. 3645
Page 2

CONNECTION CHARGES
AS INDICATED

22,197



P.C. 3645
Page 4

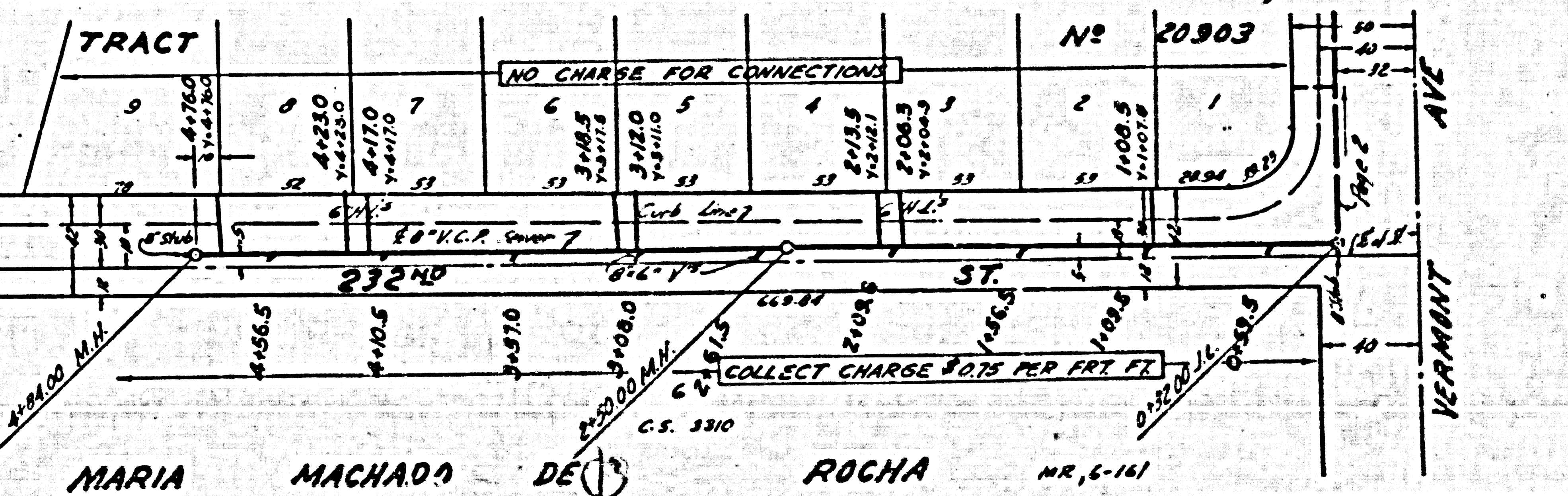
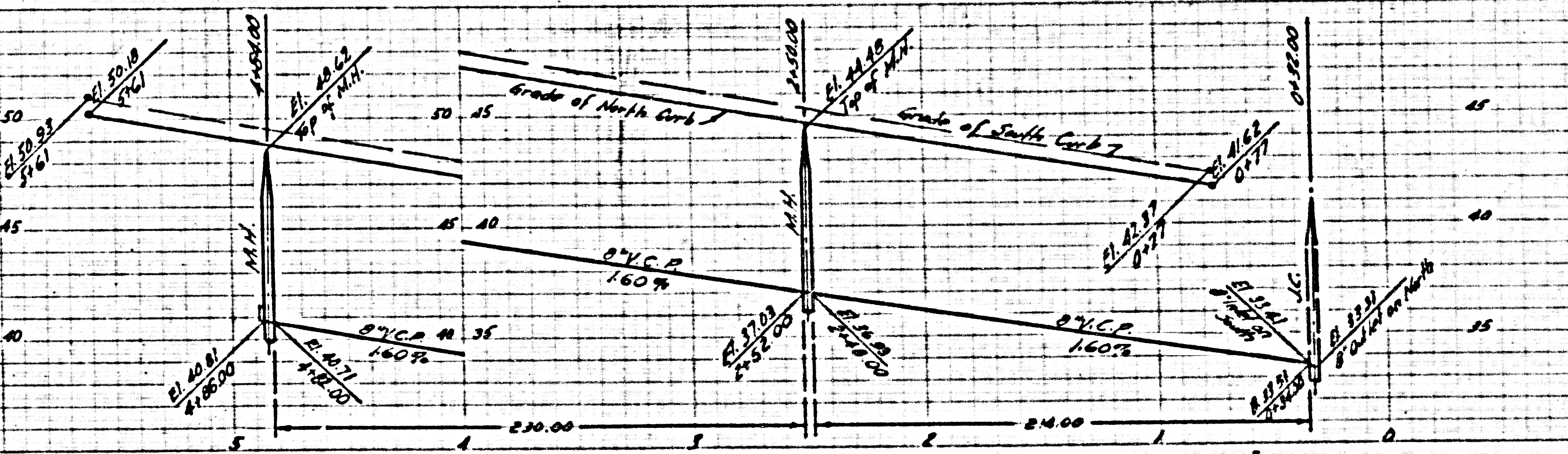
NO CHARGE FOR CONNECTIONS

22,199

P.C. 3645
Page 3

CONNECTION CHARGES AS INDICATED

22,198

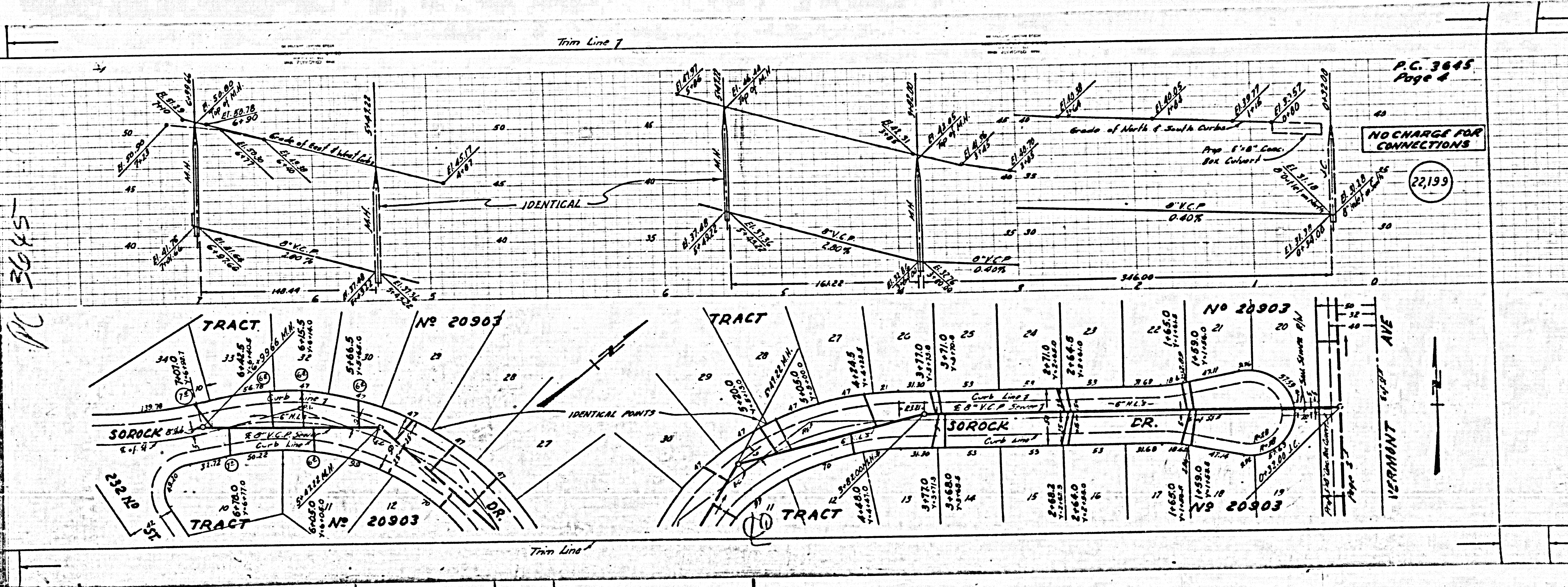


Trim Line 7

P.C. 3645
Page 4

NO CHARGE FOR CONNECTIONS

22,199



3645

PC

Trim Line