

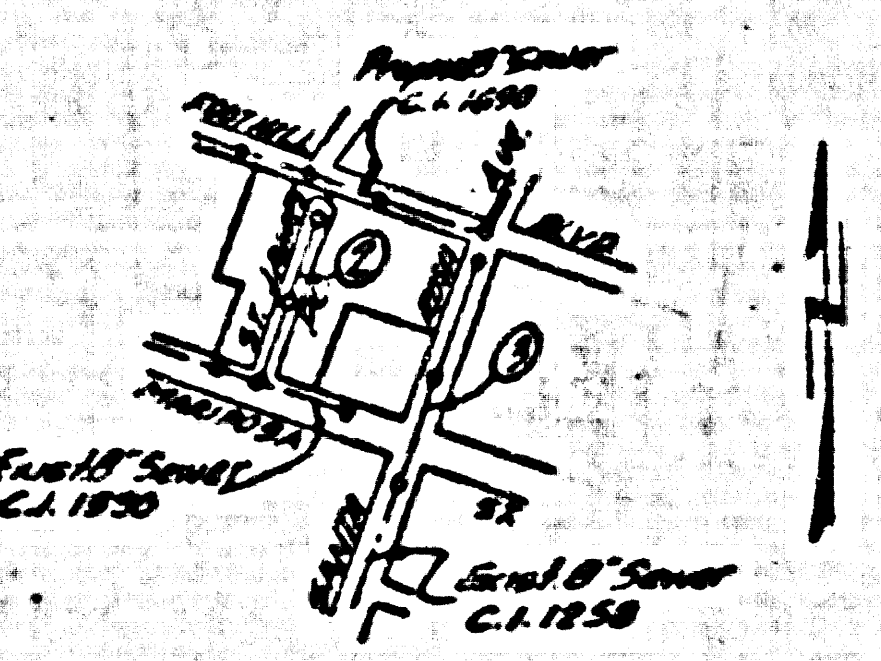
B.M. N/A Per B.C. 570-3 & L.O. 144-50
 E.I. 1353, 703 L.P.T. in N.W. of Cont. Culvert
 W. of Santa Anita Ave S. of Foothill Blvd

ALTADENA BLDG. DIST. N2 3

NOTE:
 Provide stakes on the property lines or property lines produced at right angles to the cover line of the center line of each manhole.
 No representative of the County Engineer will survey or layout any portion of the work.
 The owner or his authorized representative shall furnish the County Engineer with grade sheets and stations for all house laterals and Y branches and shall provide stakes for them at their proper locations with stationing plainly marked. Any change in location shall be requested in writing by the owner or his representative.
 No revisions shall be made in these plans without the approval of the County Engineer.

1. Use standard manhole frames and covers, S-117.
2. Use standard strength pipe except as noted.
3. Use cement mortar for all vitrified clay pipe joints.
4. Resurface all trench within paved area to meet L.A. County Road Dept. or California State Highway Dept. requirements in accordance with permit.
5. Excavate four feet of sewer at points of interference with poles, S-119.
6. House laterals to be constructed with laterals at property line 6 feet below curb grade except as noted.
7. All structures shall be brick sewer structures, S-104.
8. For allowable leakage test, see Formula No. 1, Spec'n. Sec. 81.

3. Before excavation is begun on Santa Anita Ave, the Altadena representative of the L.A. County Dept. of Parks and Recreation shall be contacted. No branches are to be within 10' of any Decidua trees. No roots 2" in diameter or larger may be cut. Branches to be freed back by representative of Parks & Recreation Dept. to clear trench. The representative of Parks & Recreation Dept. shall specify the method of treating cut roots. Backfiller or Bulldozer operator must exercise care to cause no damage of any kind to Decidua trees. All house laterals shall be dug and backfilled by hand.



INDEX MAP
 TR. N2 20201 PC 3646
 SCALE 1" = 600'

SHEET	PAGES
1	1-3

COLLECT CHARGES
 AS INDICATED
 20 October 1955

PROFILE, ALIGNMENT AND GRADE OF
SANITARY SEWERS
 TO BE CONSTRUCTED IN
TRACT N2 20201

PC 3646
 PAGE 1
 DOUBLE SCALE

21,765

PRIVATE CONTRACT NO. 3646
 W. S. 50
 ONE SHEET
 Scale: 1" = 100' AUGUST 1955
 PREPARED IN THE OFFICE OF
MUNNELLEY - TUTTLE ENGINEERS, INC.

By Ralph B. Tunnally C.E. No. 8020
 FOR LEGEND SEE PLAN NO. S-2-64

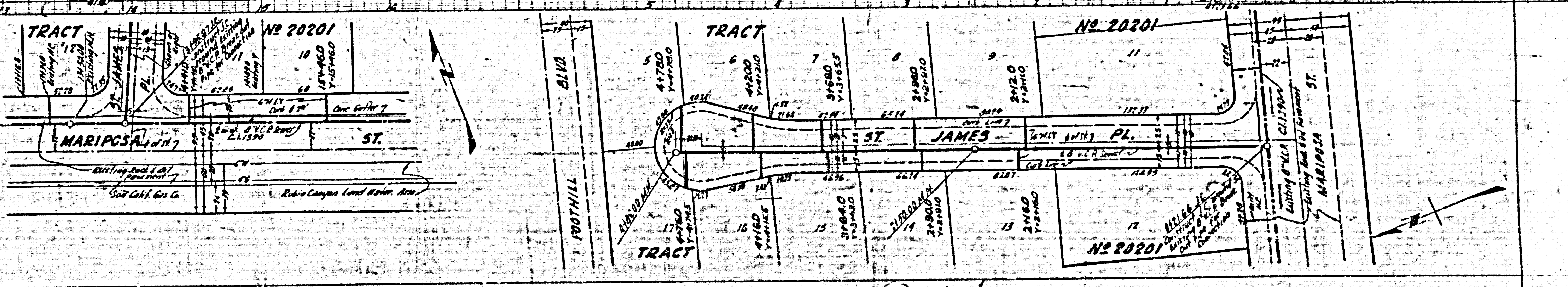
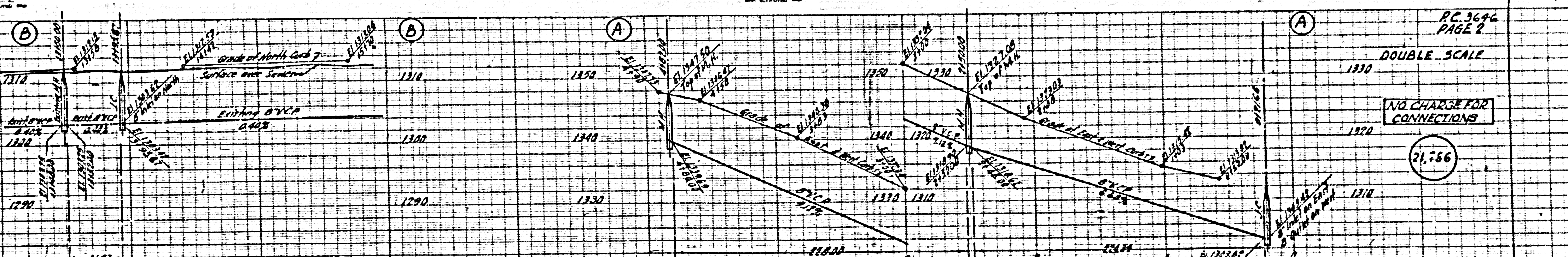
NOTE:
 Grades to which this improvement is to be constructed are shown on plans and profiles. Grade points for top of curb, center line of streets, or center line of alleys are shown by circles on profiles. All points between designated points the grade shall be established so as to conform to a straight line drawn between said designated points.
 Elevation are in feet above U.S.C. datum or mean sea level.
 The drawings and the data hereon are hereby made a part of the specifications.
 Work shall be constructed according to specifications on file in the office of the County Engineer and shall be prosecuted only in the presence of the County Engineer.
 Before work can be started, the contractor must obtain a permit to excavate in County streets from the L.A. County Road Dept., 108 W. 2nd St. and make a deposit with the County Engineer, Room 316, 253 5th St. Broadway, sufficient to cover the cost of construction inspection and record sheets.
 Approval of this plan by the County of Los Angeles does not constitute a representation as to the accuracy of the location of or the existence or non-existence of any underground utility, pipe, or structure within the limits of this project. This note applies to all sheets.
 If work is to be done in a State Highway, a permit must be obtained from the State of California, Division of Highways, 120 South Spring Street.
 COUNTY OF LOS ANGELES, CALIFORNIA
 Approved, William J. Fox, County Engineer
 Approved, A. M. Stone, Chief Clerk, C.O. No. 17
A.P. Collins
 Checked by Ralph B. Tunnally 9-16-55
 Office of County Engineer, Rm. 618, No. 2562

TRACT N2 20201

PC 3646
 P.C. 3646

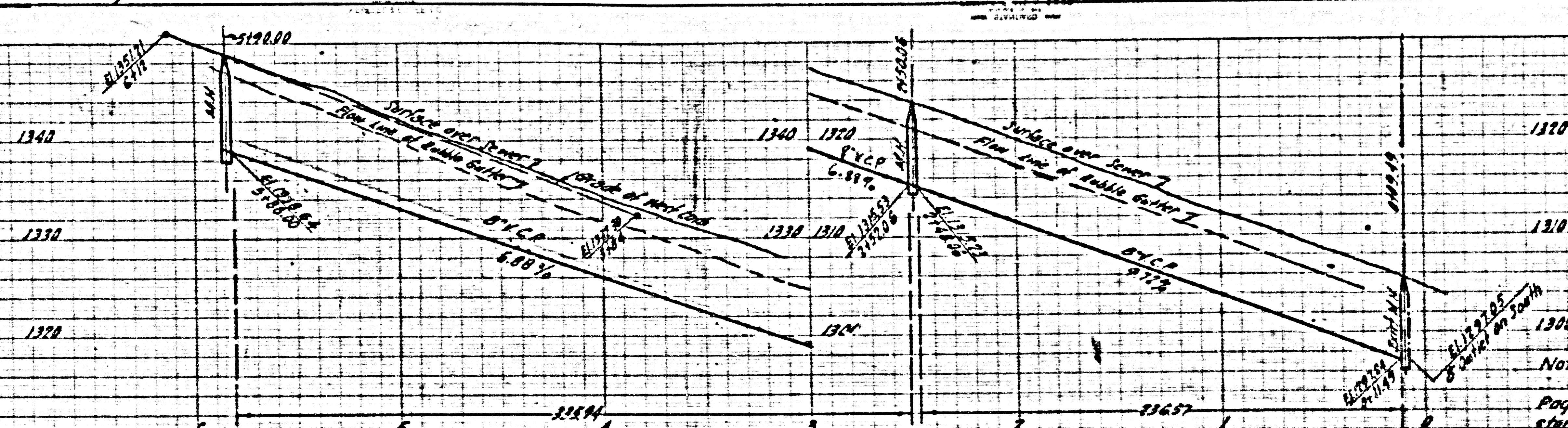
Checked 10-10-55 Wilson

21765



PC 3646
PAGE 2
DOUBLE SCALE
NO. CHARGE FOR CONNECTIONS
21,756

Trim Line 7



RC 3646
PAGE 3

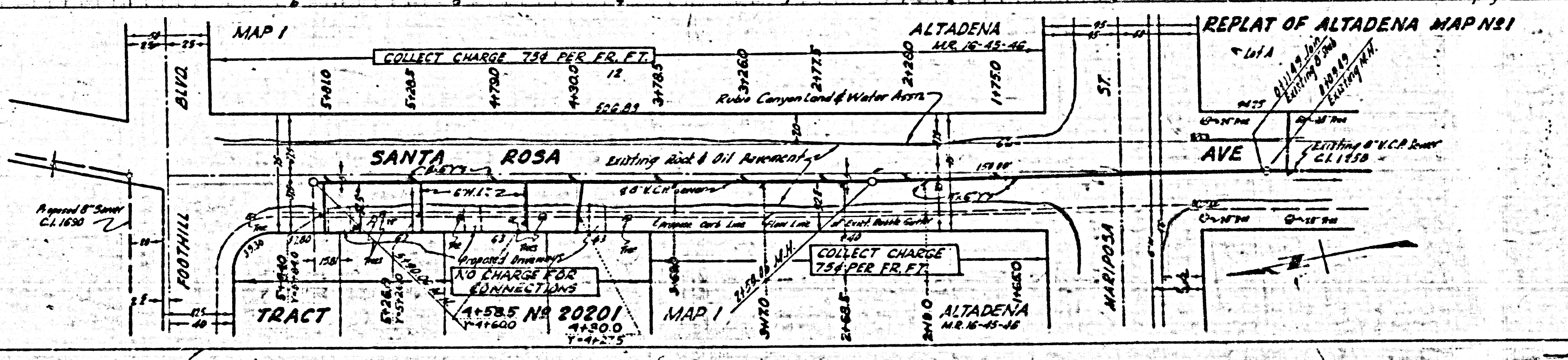
DOUBLE SCALE

COLLECT CHARGES
AS INDICATED

21,767

NOTE:
See Note No. 9
Page 1. Before work
started on this page.

P.C. 3646



Trim Line

CO

TRAC