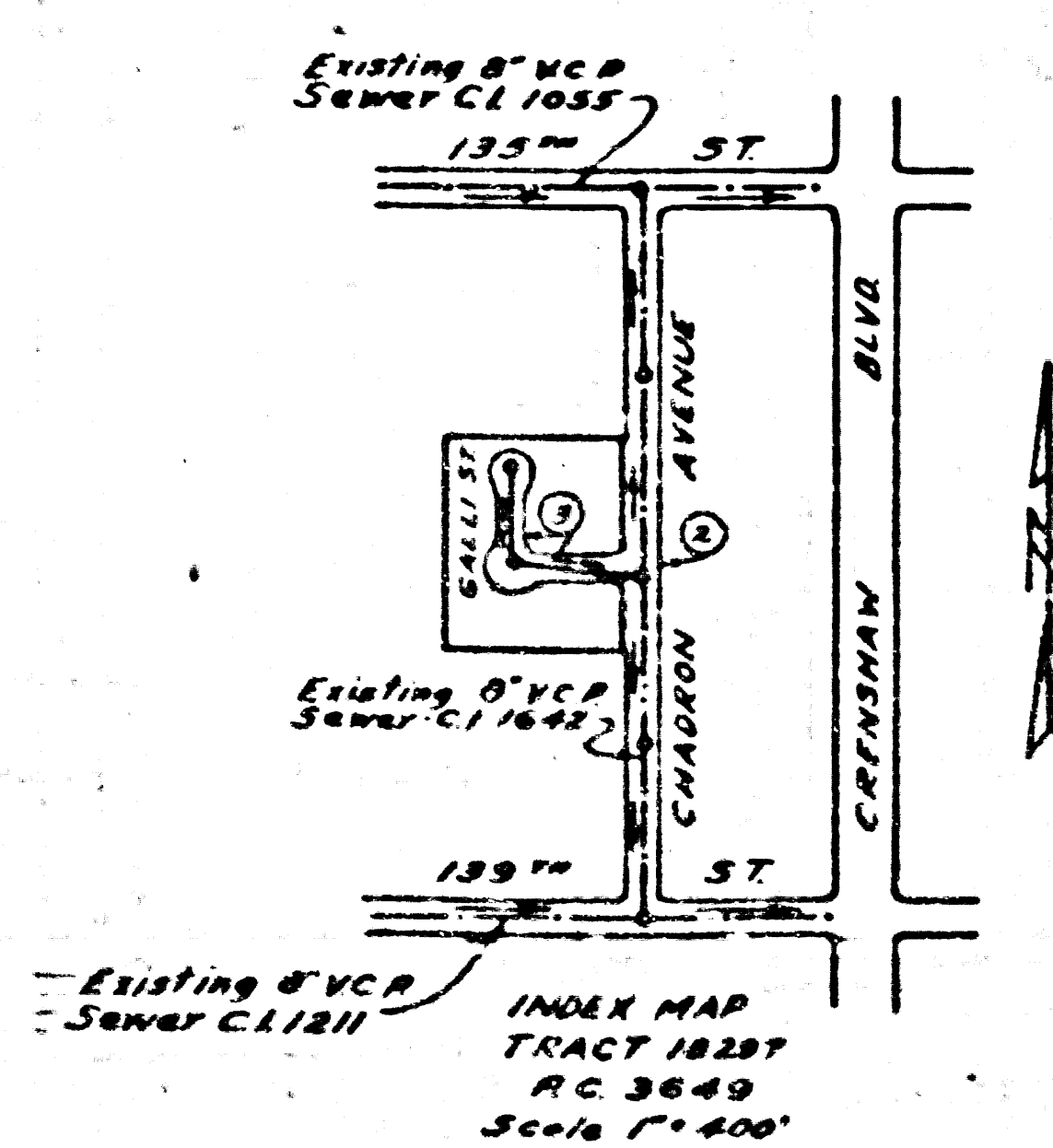


LENNOX BLDG. DIST. N 27

Branch Map - 5-1-55, County Road Dept.
 Brass Cap in NW Cor. of Conn. Bridge 123'
 E. of E. Cranshaw & 228' N. of Rosarosa, Elev. 54.00

SHEET	PAGES
1	1-3

NO CHARGE
 FOR CONNECTIONS
 - A.V. Smith 8-17-55



- NOTE:
1. THE SEWER LINE SHALL BE 12" DIA. PIPE OF THE BEST QUALITY OF APPROX. 10% STRENGTH OF 12" DIA. PIPE.
 2. THE SEWER LINE SHALL BE 12" DIA. PIPE OF THE BEST QUALITY OF APPROX. 10% STRENGTH OF 12" DIA. PIPE.
 3. THE SEWER LINE SHALL BE 12" DIA. PIPE OF THE BEST QUALITY OF APPROX. 10% STRENGTH OF 12" DIA. PIPE.
 4. THE SEWER LINE SHALL BE 12" DIA. PIPE OF THE BEST QUALITY OF APPROX. 10% STRENGTH OF 12" DIA. PIPE.
 5. THE SEWER LINE SHALL BE 12" DIA. PIPE OF THE BEST QUALITY OF APPROX. 10% STRENGTH OF 12" DIA. PIPE.
 6. THE SEWER LINE SHALL BE 12" DIA. PIPE OF THE BEST QUALITY OF APPROX. 10% STRENGTH OF 12" DIA. PIPE.
 7. THE SEWER LINE SHALL BE 12" DIA. PIPE OF THE BEST QUALITY OF APPROX. 10% STRENGTH OF 12" DIA. PIPE.
 8. THE SEWER LINE SHALL BE 12" DIA. PIPE OF THE BEST QUALITY OF APPROX. 10% STRENGTH OF 12" DIA. PIPE.
 9. THE SEWER LINE SHALL BE 12" DIA. PIPE OF THE BEST QUALITY OF APPROX. 10% STRENGTH OF 12" DIA. PIPE.
 10. THE SEWER LINE SHALL BE 12" DIA. PIPE OF THE BEST QUALITY OF APPROX. 10% STRENGTH OF 12" DIA. PIPE.

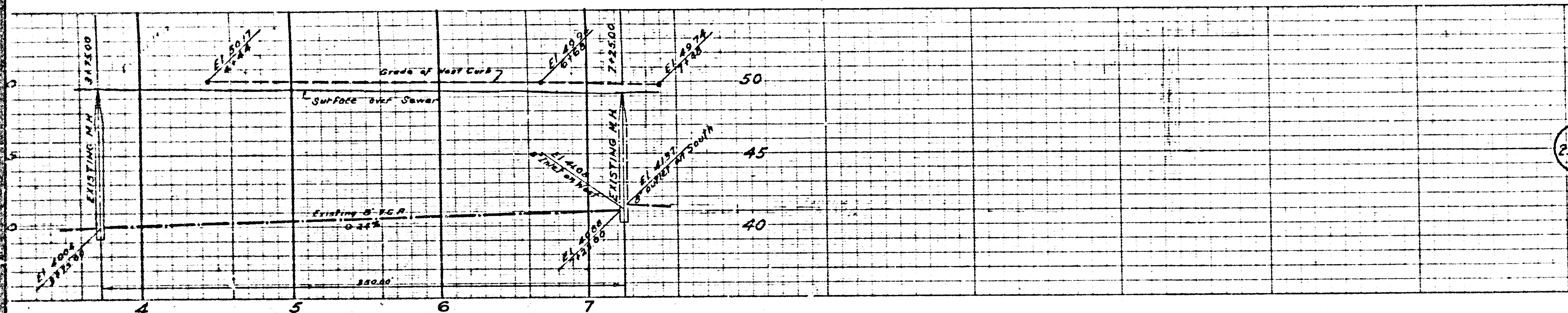
Checked 8-8-55 *W. L. Blair*
 (1/3)

TRACT NO 18297
 PRIVATE CONTRACT NO 3649
 W.S. 25
 ONE SHEET
 AUGUST 1955
 PREPARED IN THE OFFICE OF
MURDOCK MCKENZIE
Murdock McKenzie
 4-4-55

PC 3649
 PAGE 1
 23,191
 (3)

JOHN R. LINDSEY
 ENGINEER

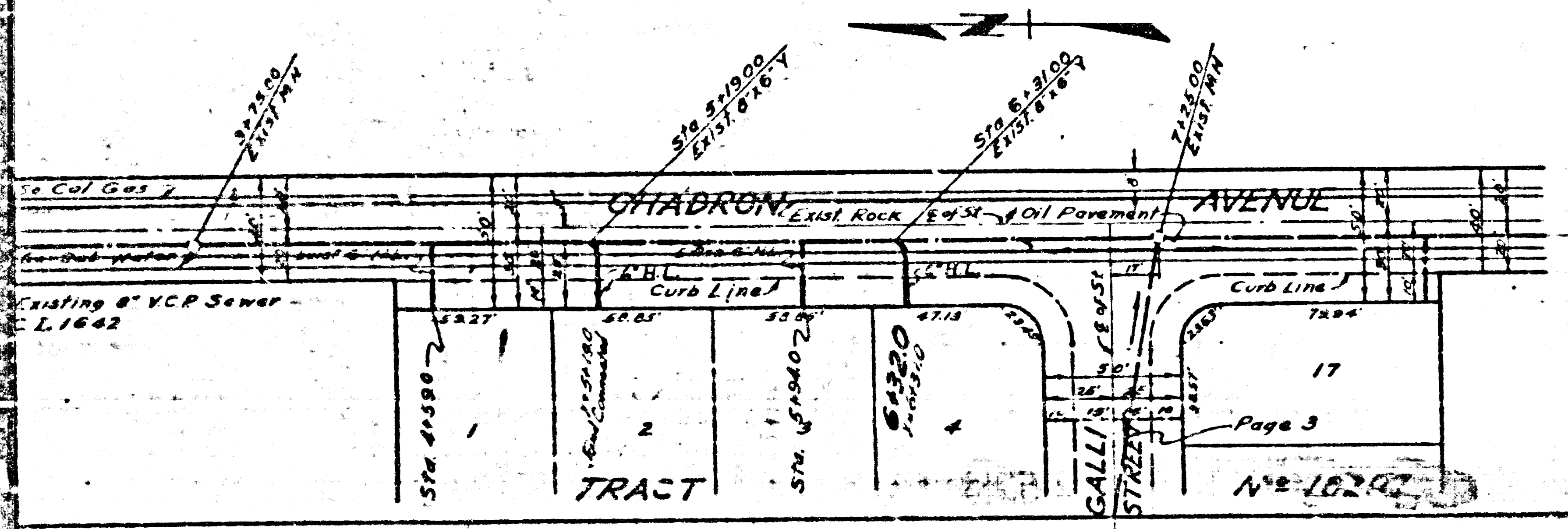
Trim Line 2



P.C. 3649
PAGE 2

NO CHARGE
FOR CONNECTION

23,192

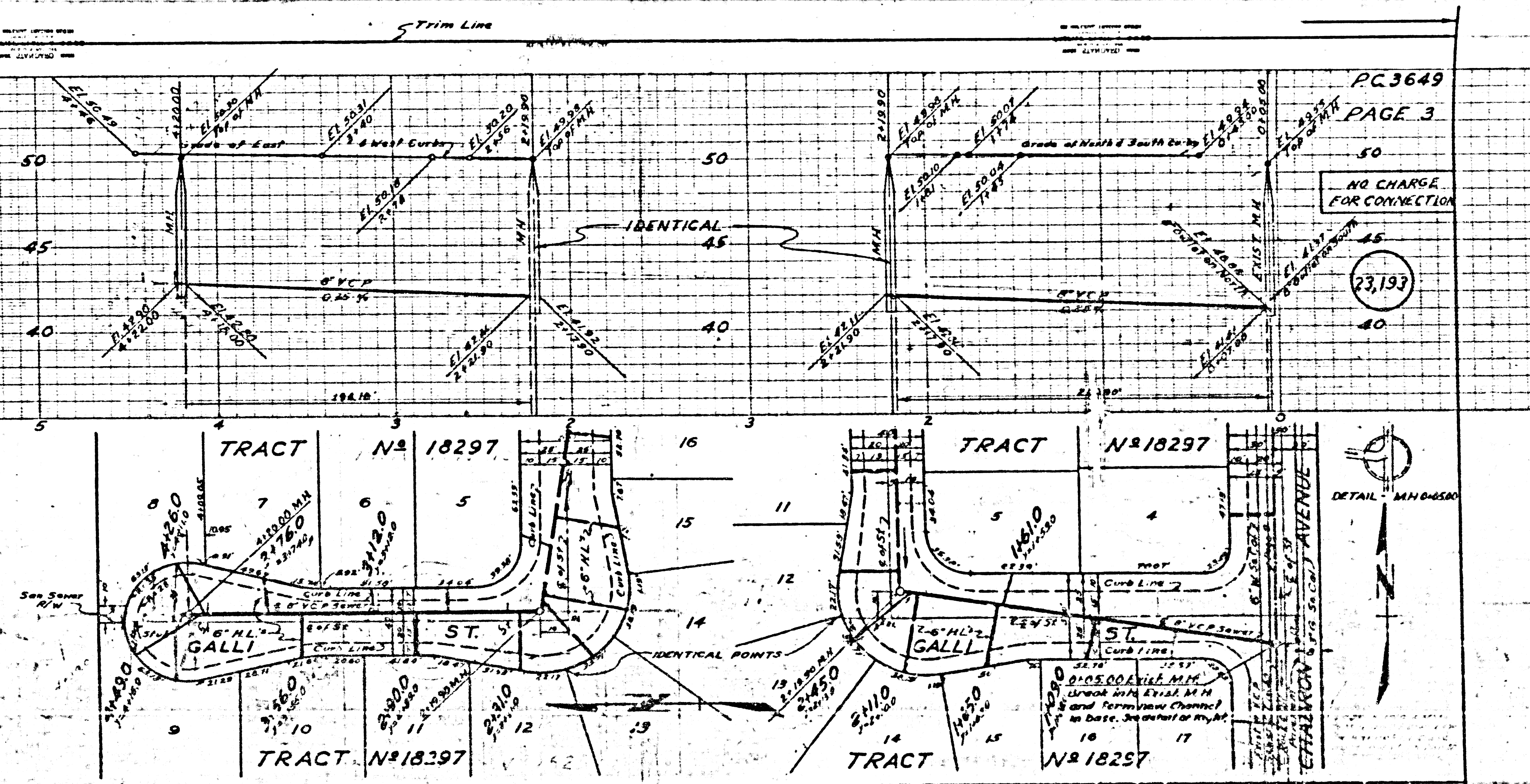


SEE PLAN BY
SURVEYOR FILE

Trim Line 3

(1) (2)

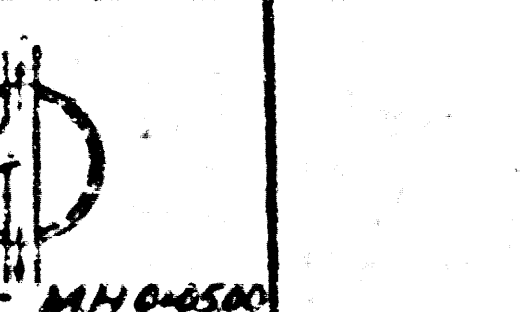
PC 3649



PC3649
PAGE 3

NO CHARGE
FOR CONNECTION

23,193



DETAIL M.H. 04500



10