

PUNTE BLDG. DIST No 2

TRIM LINE

- NOTE:**
- Provide stakes on the property lines or property lines produced at right angles to the sewer line at the center line of each manhole.
- No representative of the County Engineer will survey or layout any portion of the work.
- The owner or his authorized representative shall furnish the County Engineer with grade sheets and stations for all house laterals and Y branches and shall provide stakes for them at their proper locations with stationing plainly marked. Any change in location shall be requested in writing by the owner or his representative.
- No revisions shall be made in these plans without the approval of the County Engineer.
1. Use standard manhole frames and covers, S-a-117.
  2. Use standard strength pipe except as noted.
  3. Use cement mortar for all vitrified clay pipe joints.
  4. Resurface all trench within paved area to meet L.A. County Road Dept. or California State Highway Dept. requirements in accordance with permit.
  5. Excavate four feet of sewer at points of interference with poles, S-a-119.
  6. House laterals to be constructed with inverts at property line \_\_\_\_\_ feet below curb grade except as noted.
  7. All structures shall be brick sewer structures, S-a-104.
  8. For allowable leakage test, see Formula No. \_\_\_\_\_ Spec's., Sec. 51.
- Manhole top to unimproved Right-Of-Way to be 6" above finish grade.

PROFILE, ALIGNMENT AND GRADE OF  
SANITARY SEWERS  
TO BE CONSTRUCTED IN  
TRACT No 20443

PC 3651  
Page 1  
DOUBLE SCALE

22,029

PRIVATE CONTRACT NO. 3651  
W. S. 38  
3 SHEETS

Scale: VERT. 1" = 4'  
HORIZ. 1" = 40' AUGUST 1955  
PREPARED BY THE OFFICES OF  
HAROLD L. JOHNSON

*Harold L. Johnson*  
C.E. No. 7-66  
FOR LEGEND SEE PLAN NO. S-a-64

**NOTE:**

Grades to which this improvement is to be constructed are shown on plans and profiles. Grade points for top of curbs, center line of streets, or center line of alleys are shown by circles on profiles. At all points between designated points the grade shall be established so as to conform to a straight line drawn between said designated points.

Elevations are in feet above U.S.G.S. datum or mean sea level.

This drawing and the data hereon are hereby made a part of the specifications.

Work shall be constructed according to specifications on file in the office of the County Engineer and shall be prosecuted only in the presence of the County Engineer.

Before work shall be started, the contractor must obtain a permit to excavate in County streets from the L.A. County Road Dept., 108 W. 2nd St., and make a deposit with the County Engineer, Room 314, 215 So. Broadway sufficient to cover the cost of construction inspection and record plans.

Approval of this plan by the City of Los Angeles does not constitute a representation as to the accuracy of the location of or the existence or non-existence of any underground utility, pipe, or structure within the limits of this project. This note applies to all sheets.

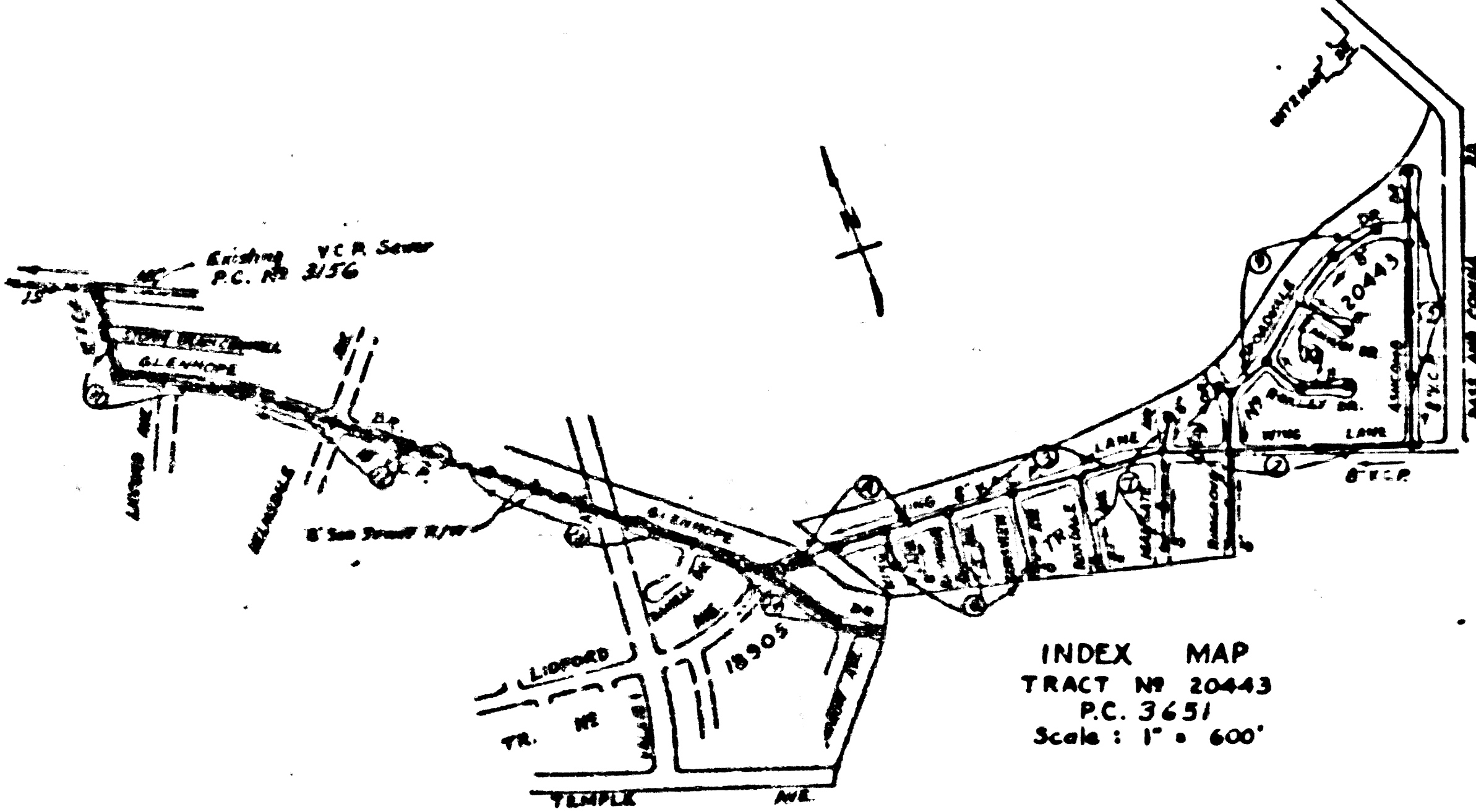
If work is to be done in a State Highway, a permit must be obtained from the State of California, Division of Highways, 120 South Spring Street.

COUNTY OF LOS ANGELES, CALIFORNIA  
Approved, William J. Fox, County Engineer  
Approved, A. M. Ream  
CHIEF ENGR. CO. SAN. DIST. NO. 22  
*A. P. Collins*  
Checked by: *K. Onda*  
Office of County Engineer, Dep. C. E. No. 3406

Bench Mark: Set L & B Nail south Curb of Driveway to House No 876 Glendora Ave. ± 75' So. and ± 50' E. of ± intersection Elliot Ave. and Glendora Ave. ± 30' East of Beg. of Curb.  
S. G. 1014 Elevation 327.027

SHEET	PAGES
1	1-5
2	6-10
3	11-14

COLLECT CHARGES AS INDICATED  
S.C. Order 932-55



INDEX MAP  
TRACT No 20443  
P.C. 3651  
Scale: 1" = 600'

Checked 1-4-55 *H. J. Fox*

TRIM LINE

PC 3651

PC 3651  
Page 2  
DOUBLE SCALE

COLLECT CHARGES AS INDICATED

22,030

COLLECT CHARGES AS INDICATED  
S.C. Order 932-55

NE



PC. 3651  
Page 4

DOUBLE SCALE

COLLECT CHARGES  
AS INDICATED

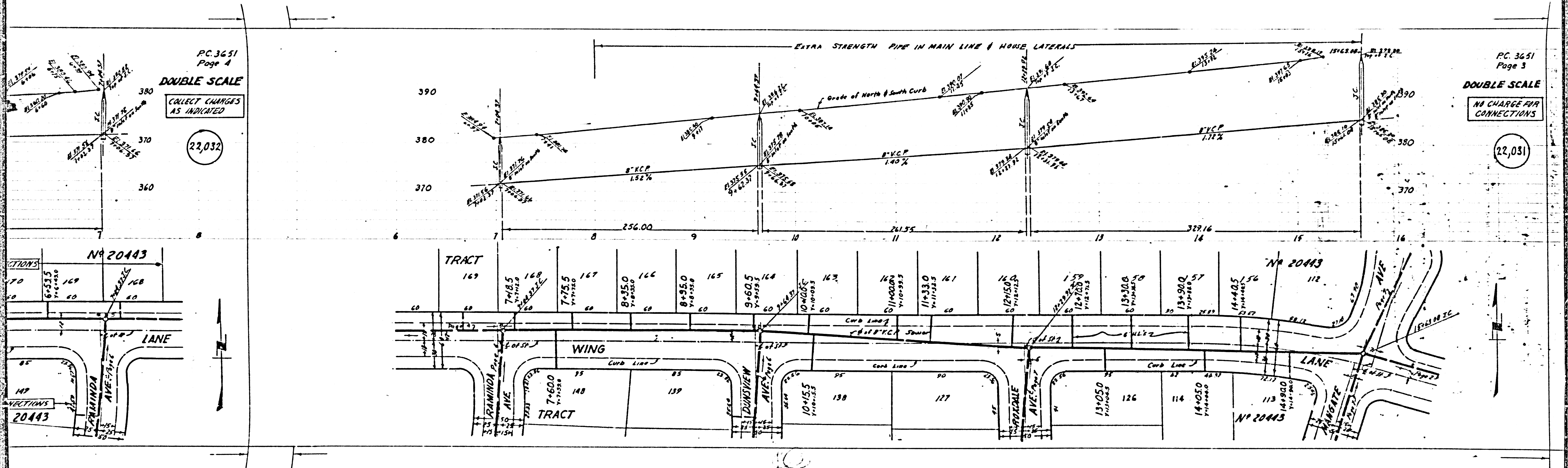
22,032

PC. 3651  
Page 3

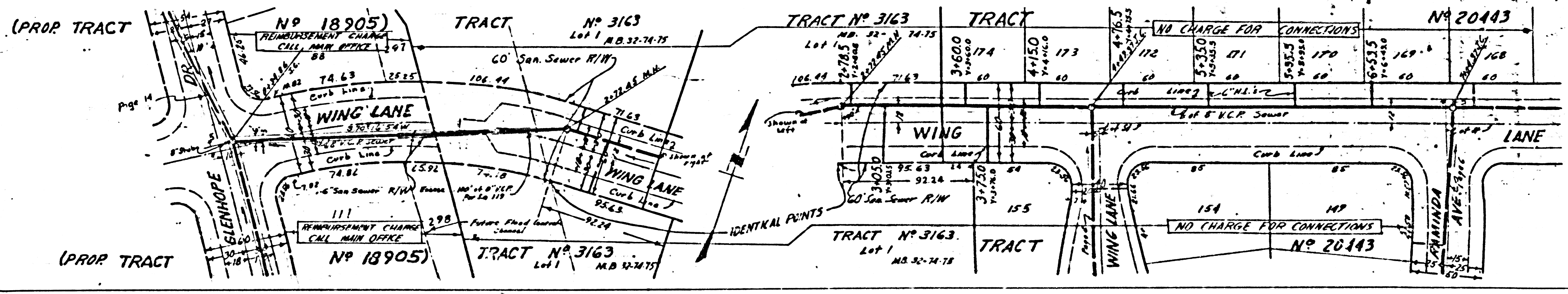
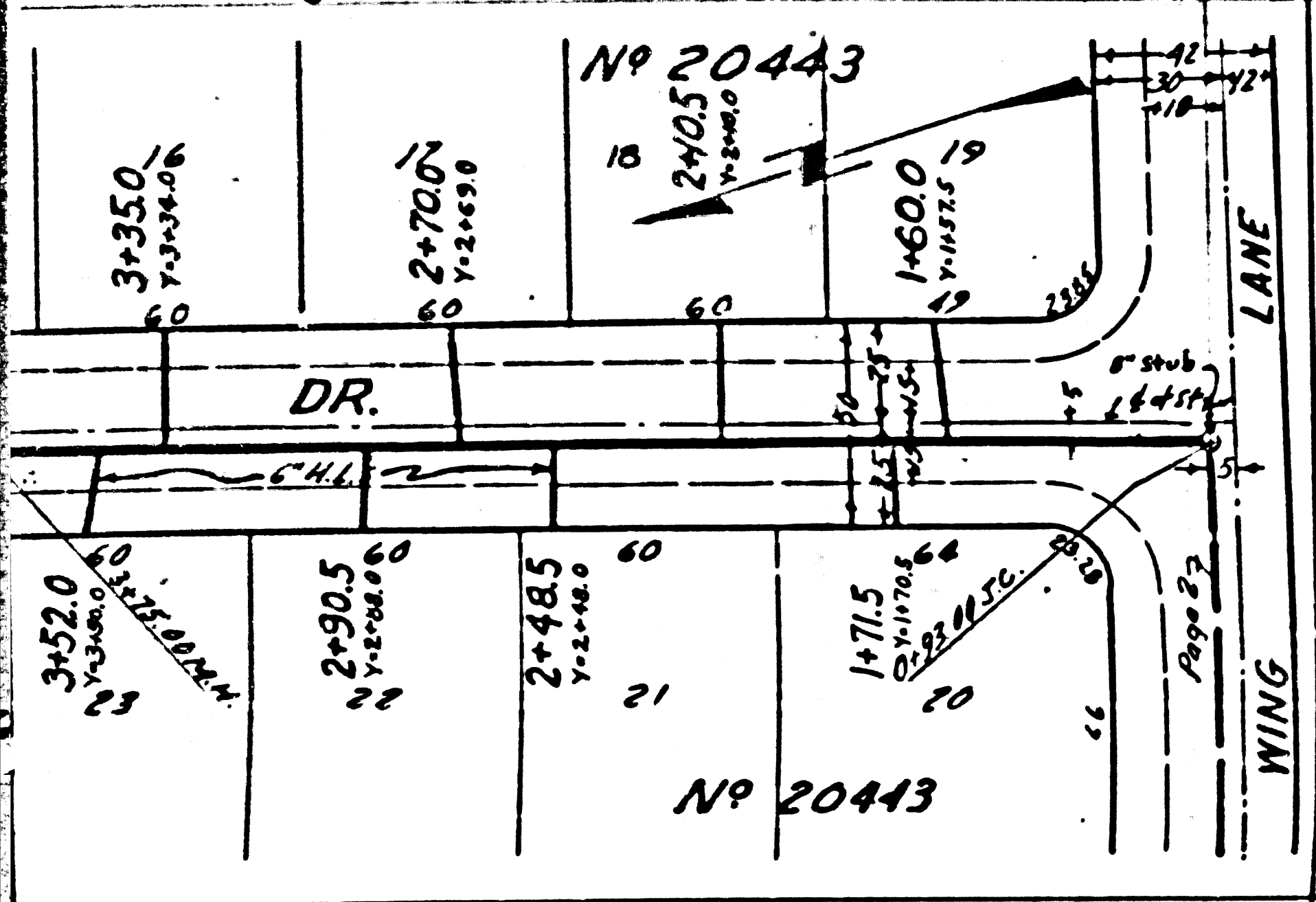
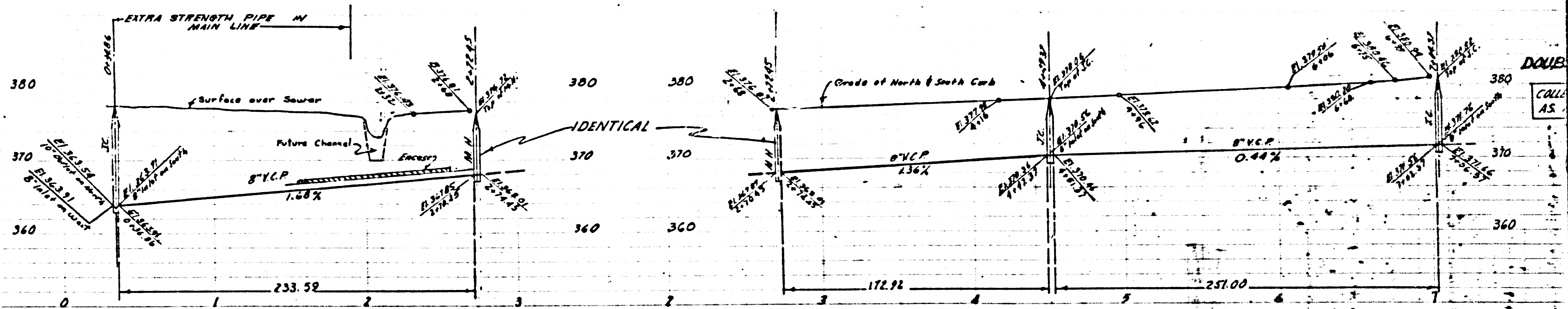
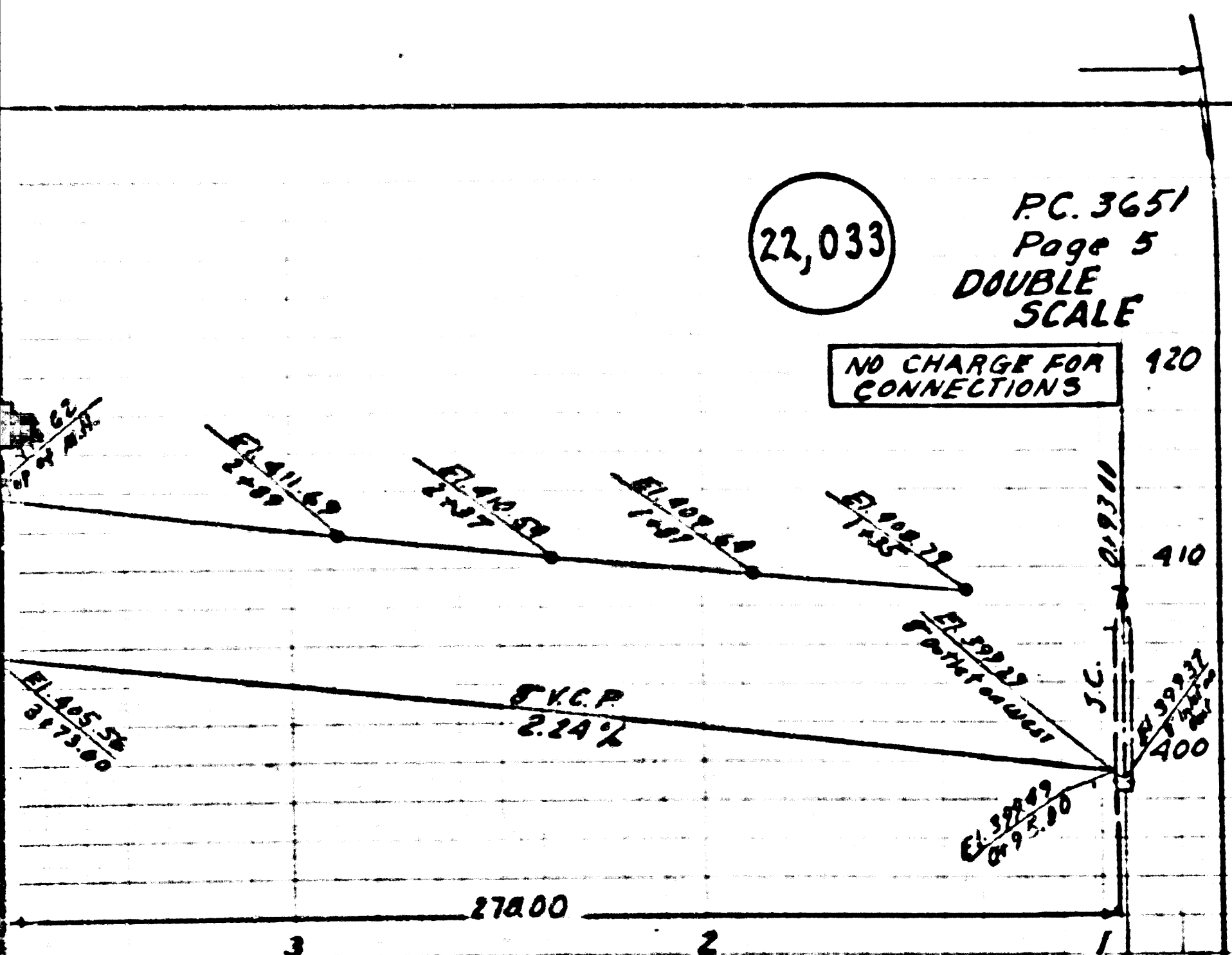
DOUBLE SCALE

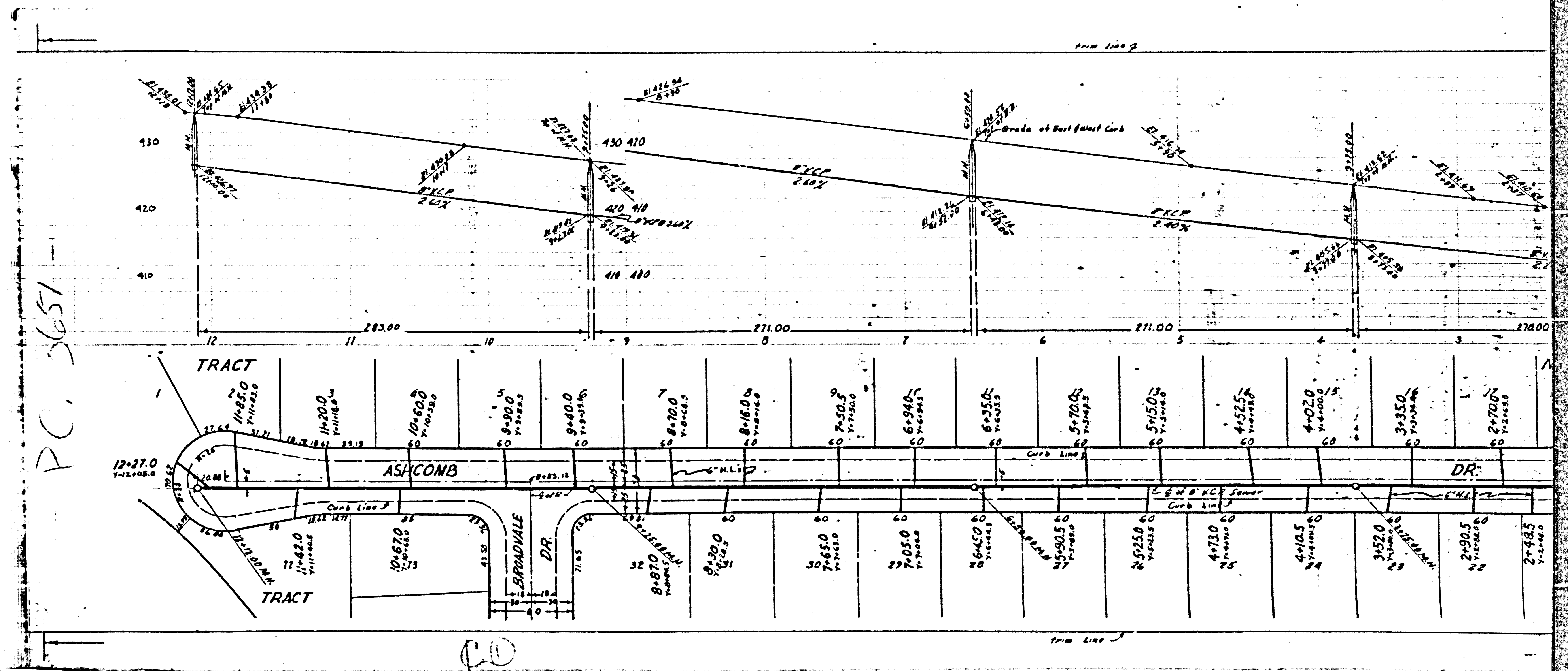
NO CHARGE FOR  
CONNECTIONS

22,031



22,033  
 PC 3651  
 Page 5  
 DOUBLE SCALE  
 NO CHARGE FOR CONNECTIONS

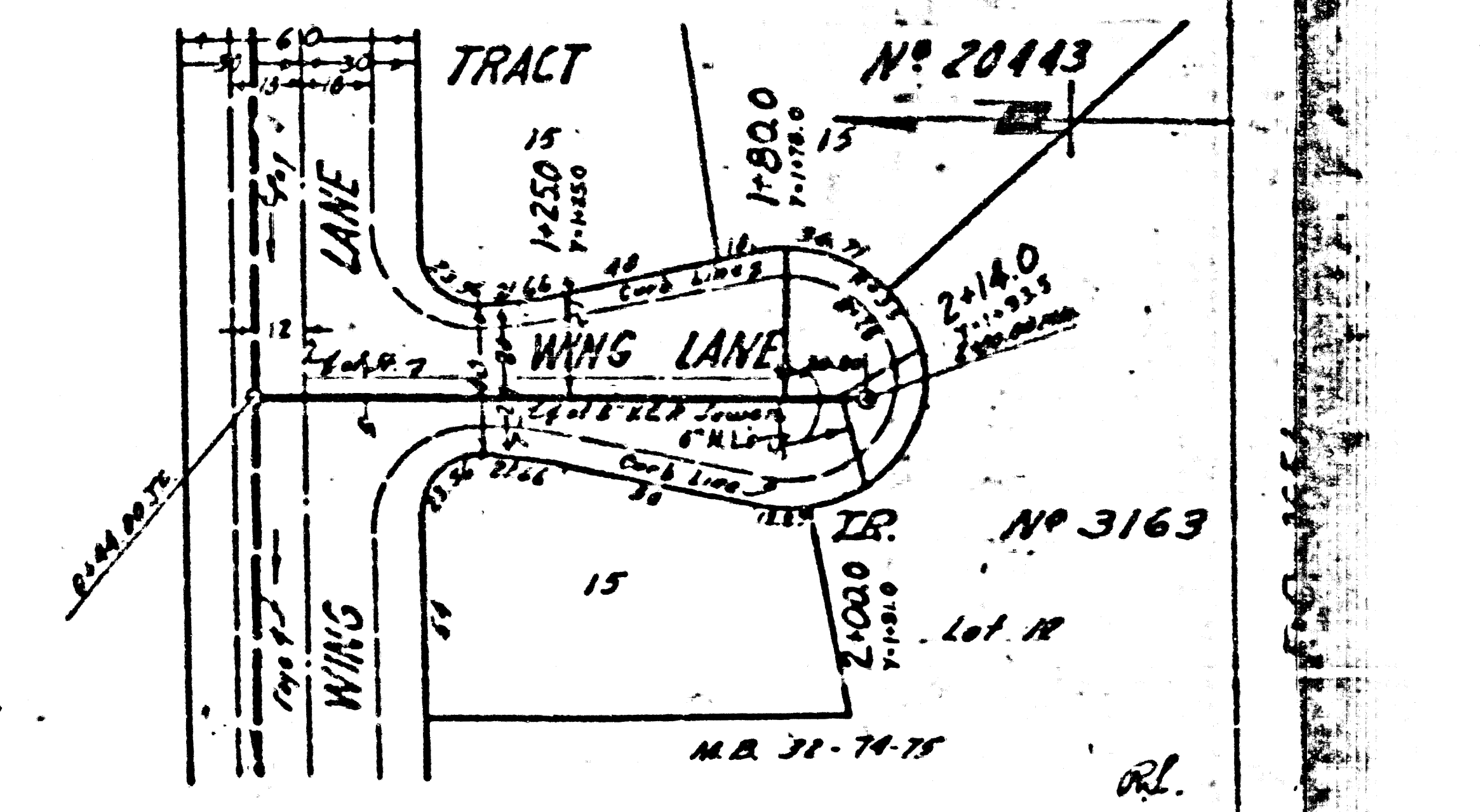
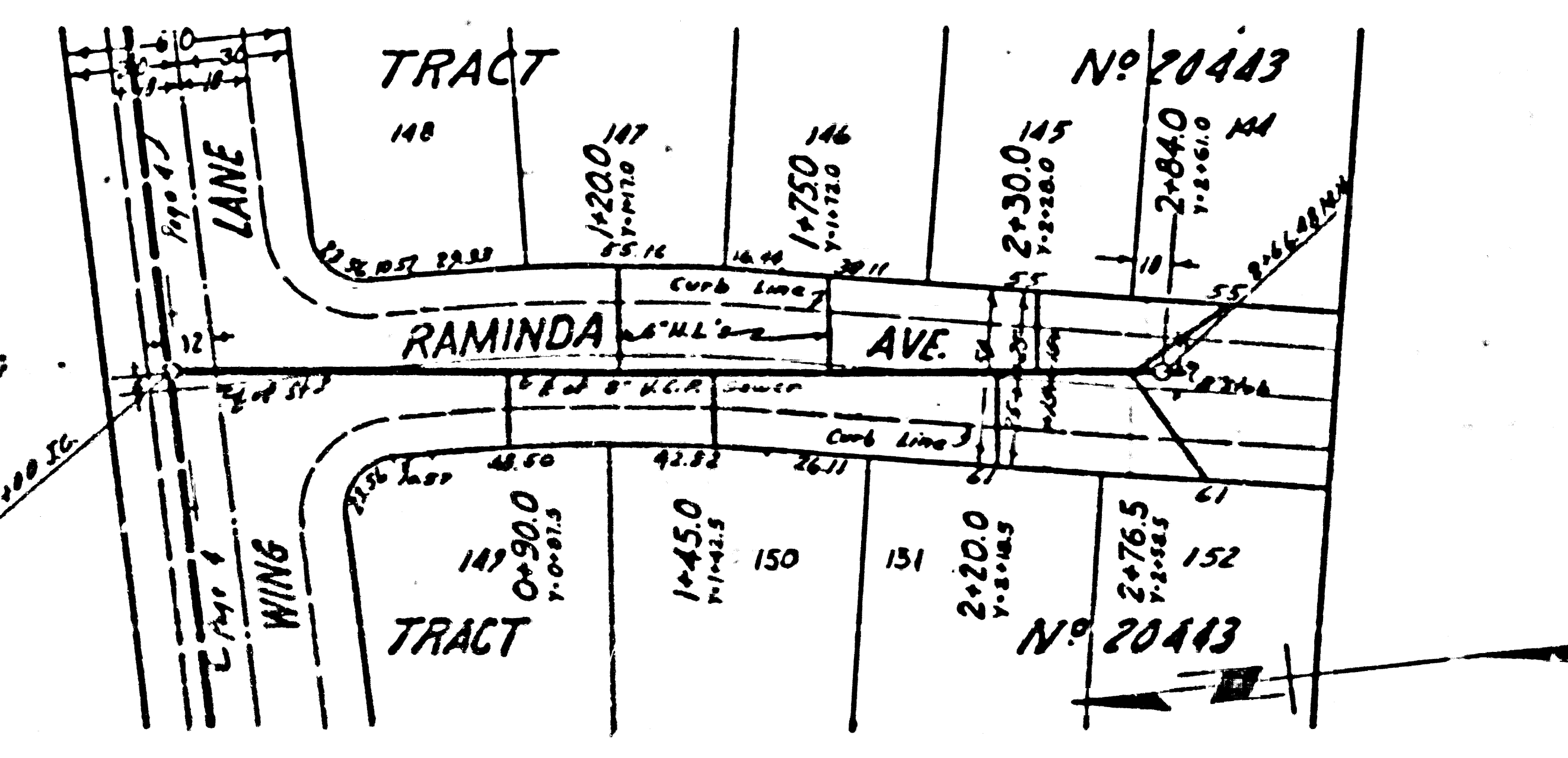
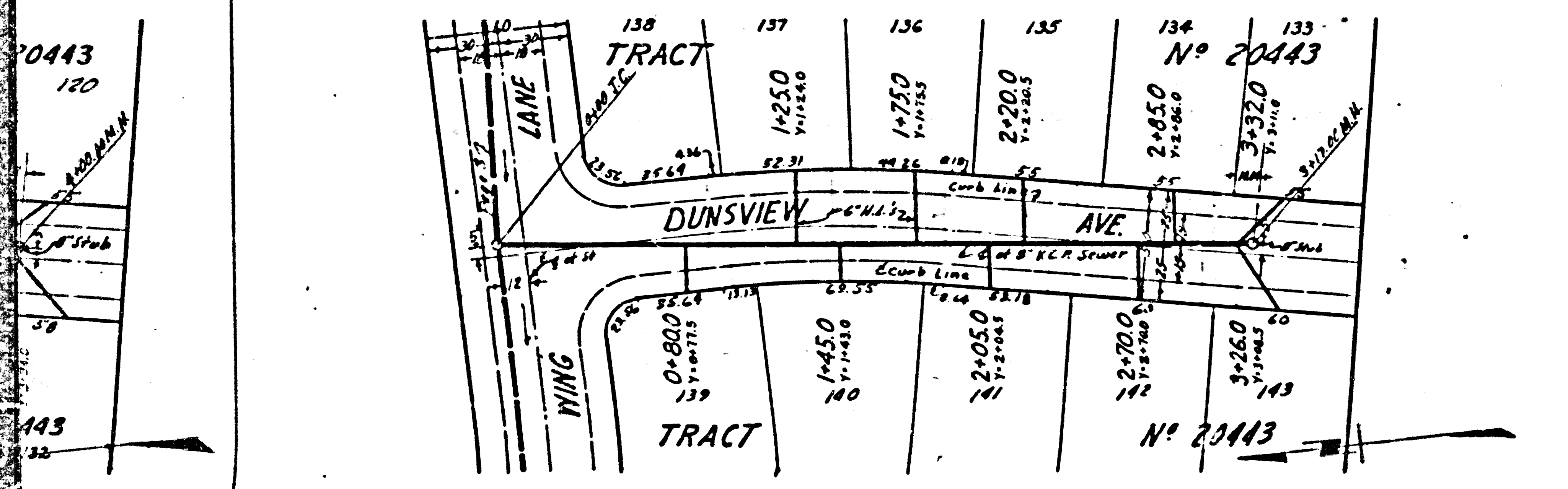
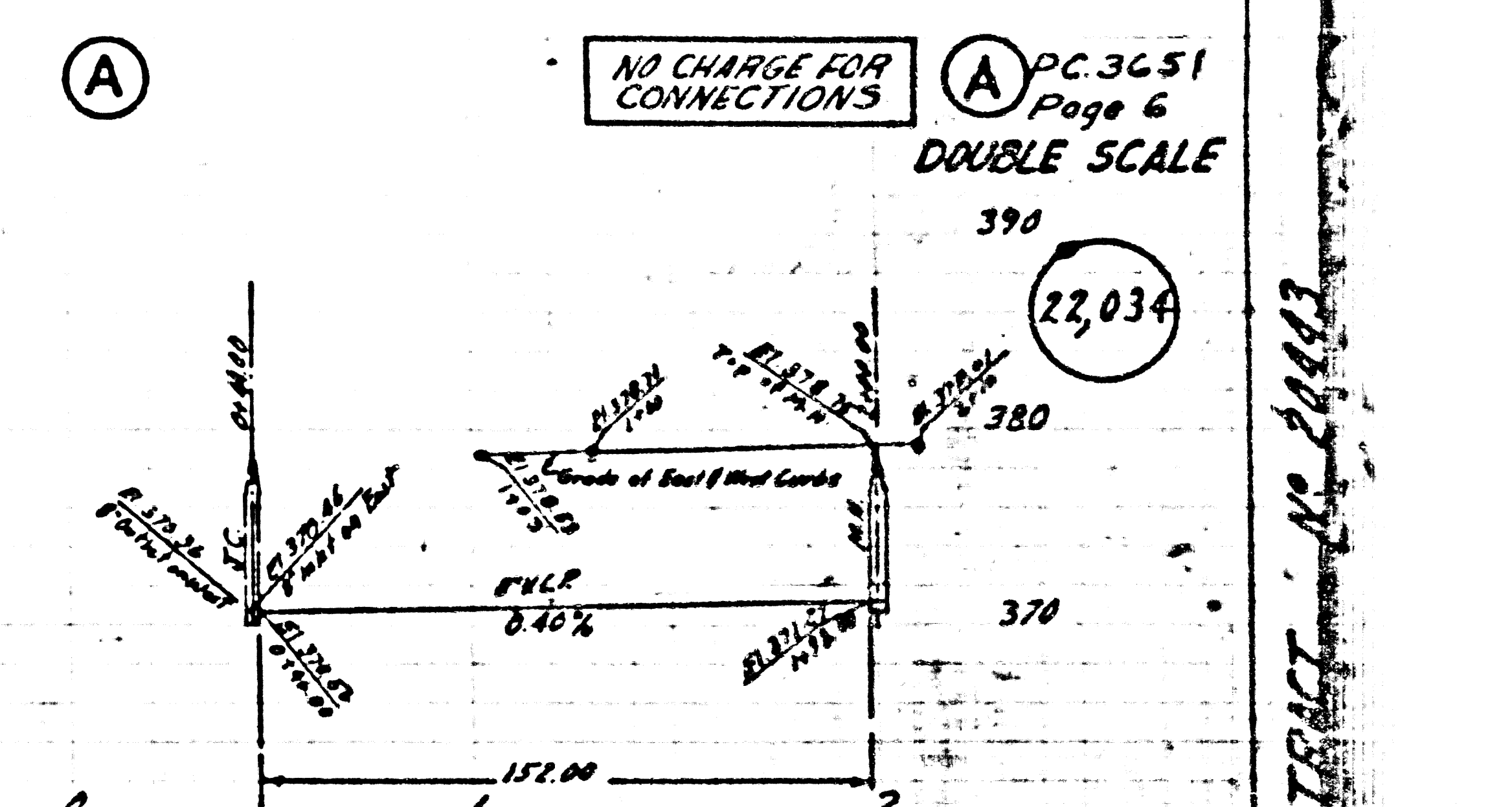
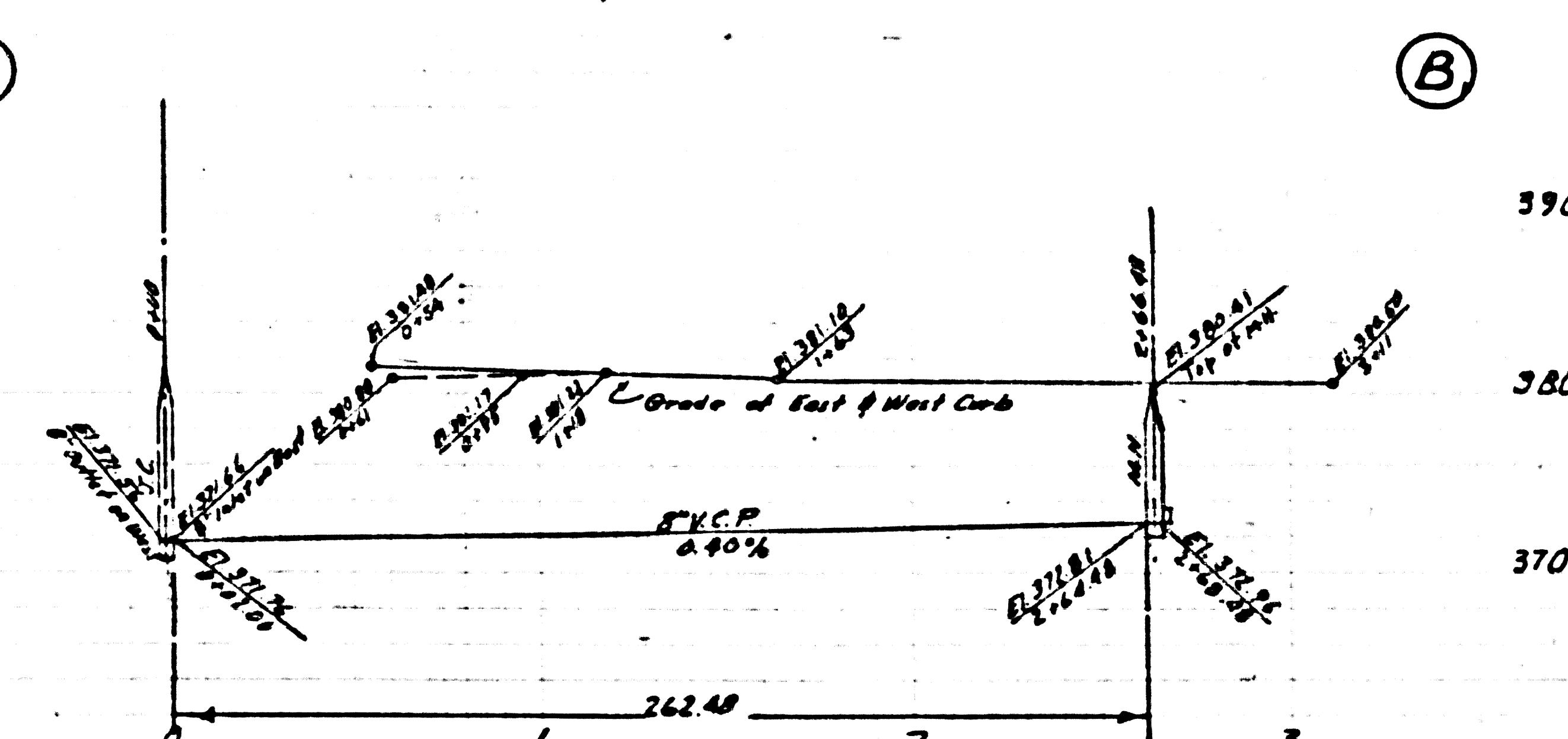
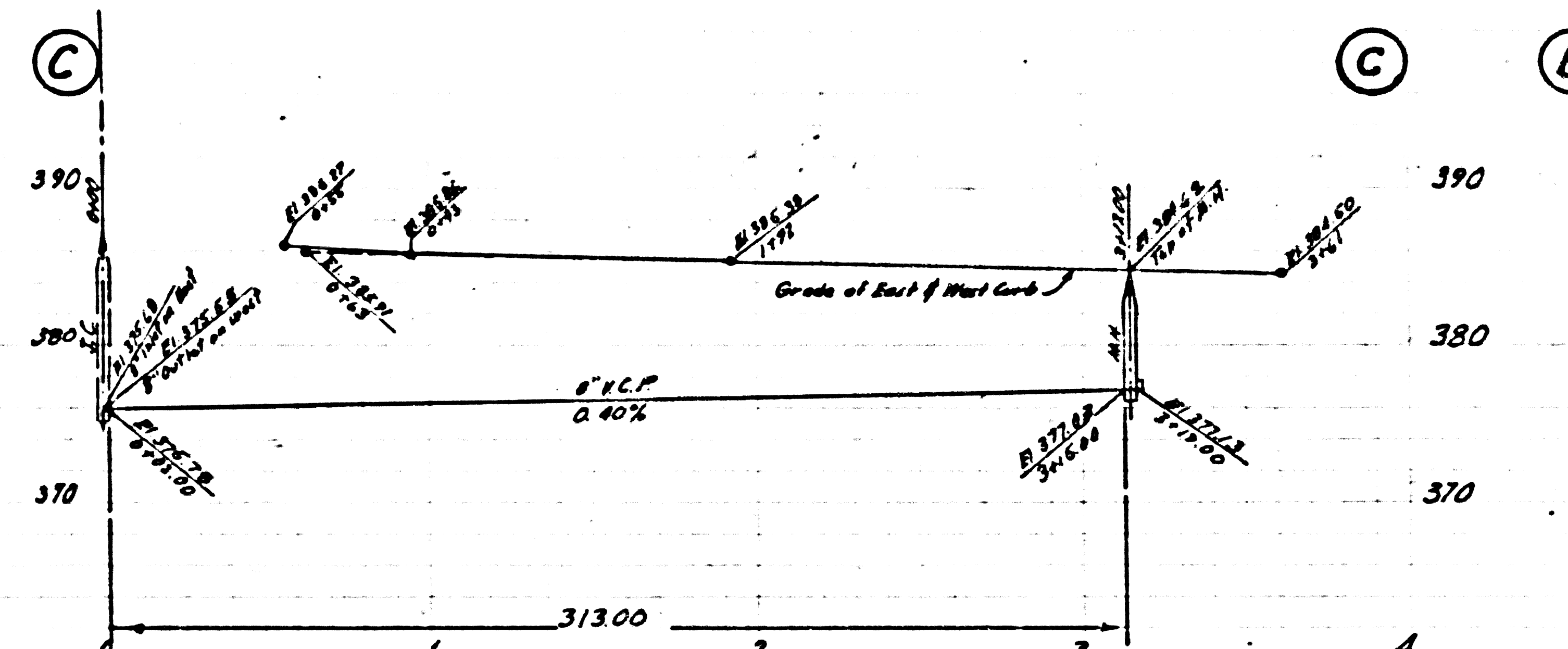




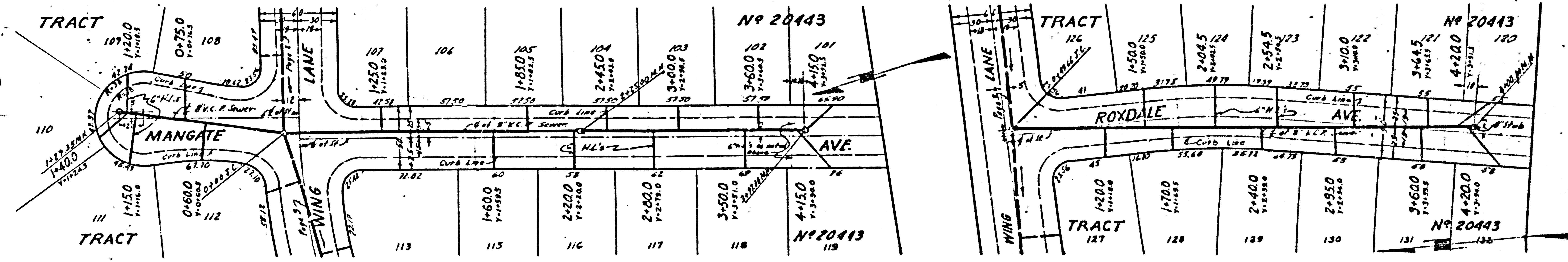
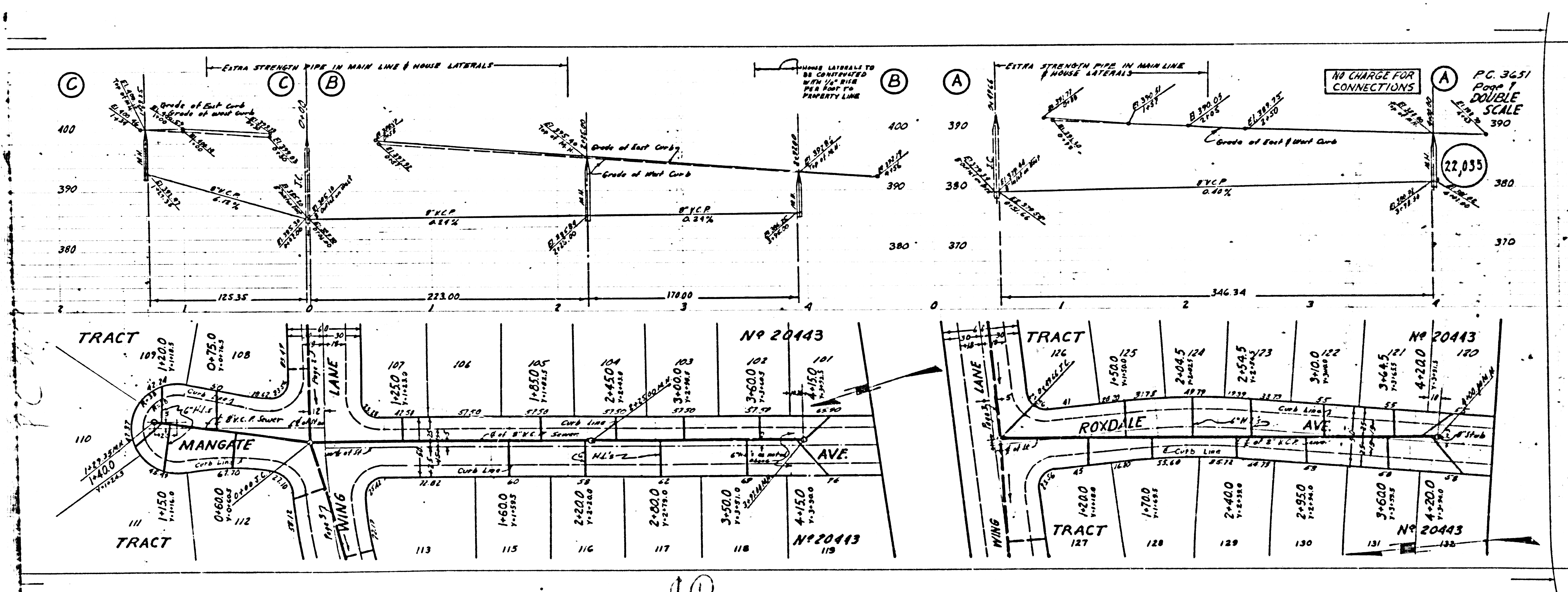
PC 3651

CO

PC 3651  
Page 7  
DOUBLE  
SCALE  
22,035



Trim Line



NO CHARGE FOR CONNECTIONS

PG. 3651  
Page 1  
DOUBLE SCALE

22,035

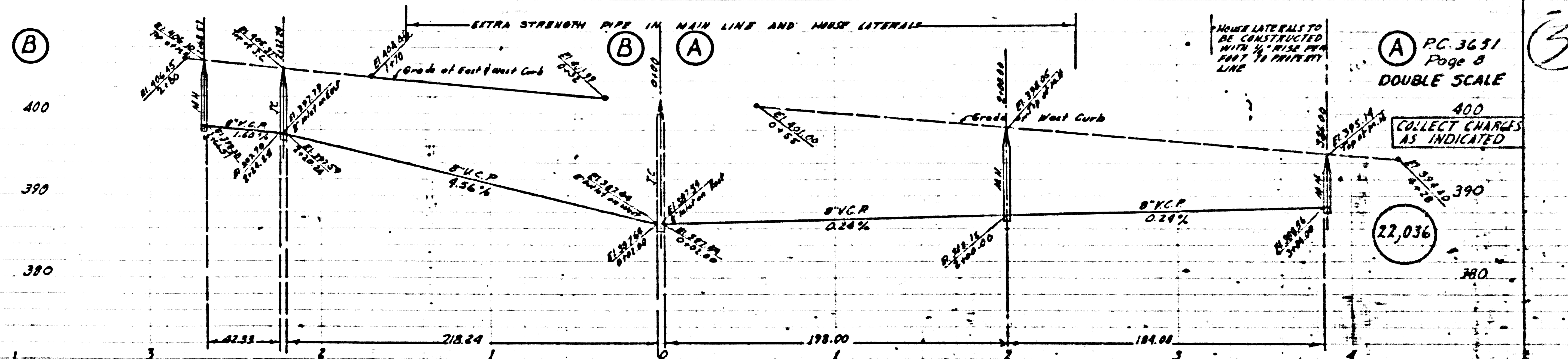
10

PC 3651  
Page 9  
DOUBLE SCALE  
NO CHARGE FOR  
CONNECTIONS

22,037

When Connected &  
Approved this page  
is valid 10-11-55

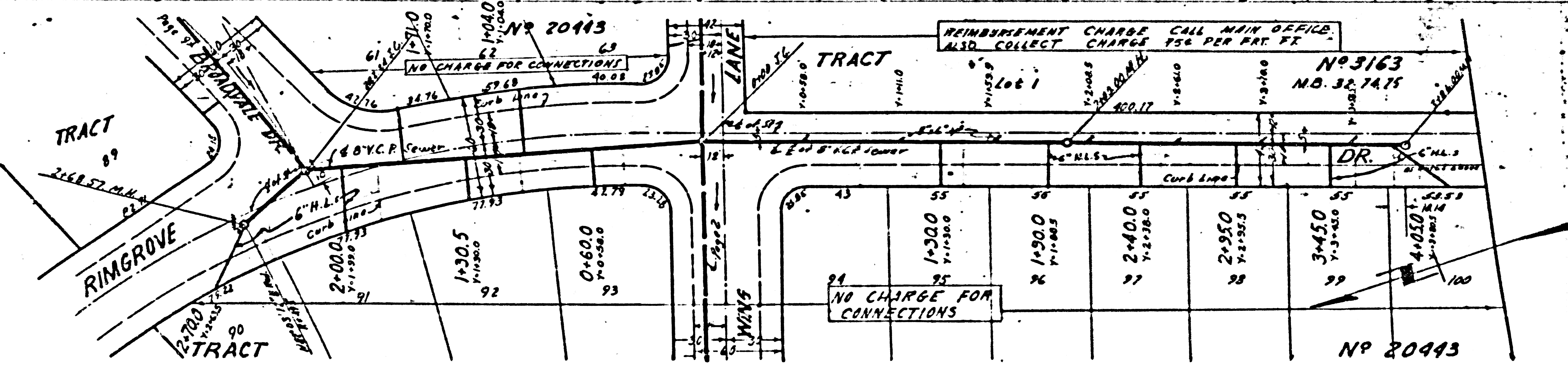
9+75.0  
Y=9+68.0



PC 3651  
Page 8  
DOUBLE SCALE

COLLECT CHARGES  
AS INDICATED

22,036



NO CHARGE FOR  
CONNECTIONS

NO 20443



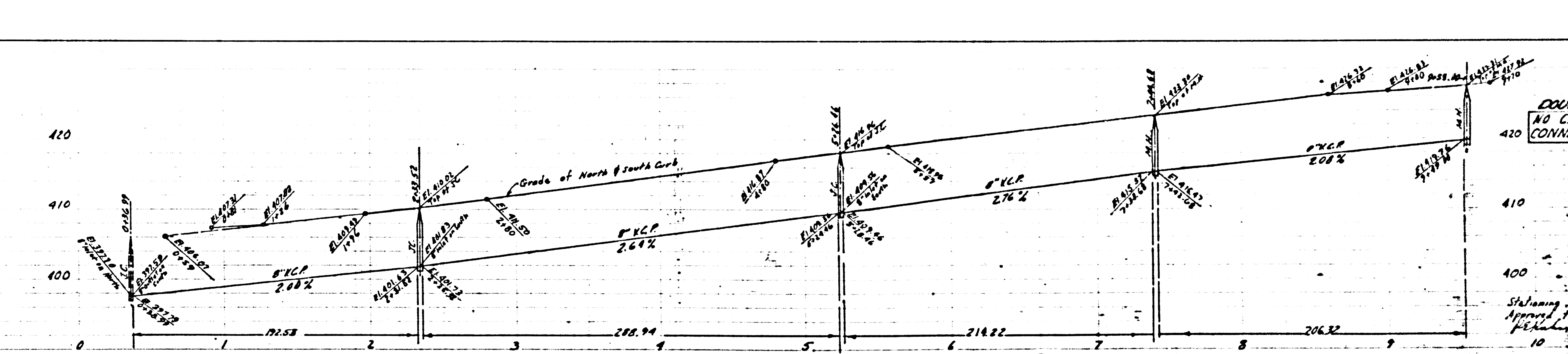
(A)

PC. 3651  
Page 10  
DOUBLE SCALE  
NO CHARGE FOR  
CONNECTIONS

22,038

410  
400  
390

410  
400

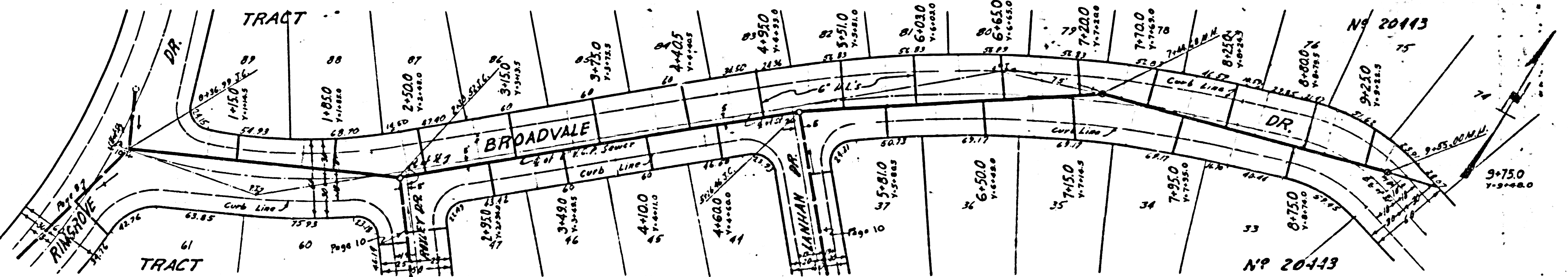


PC. 3651  
Page 9  
DOUBLE SCALE  
NO CHARGE FOR  
CONNECTIONS

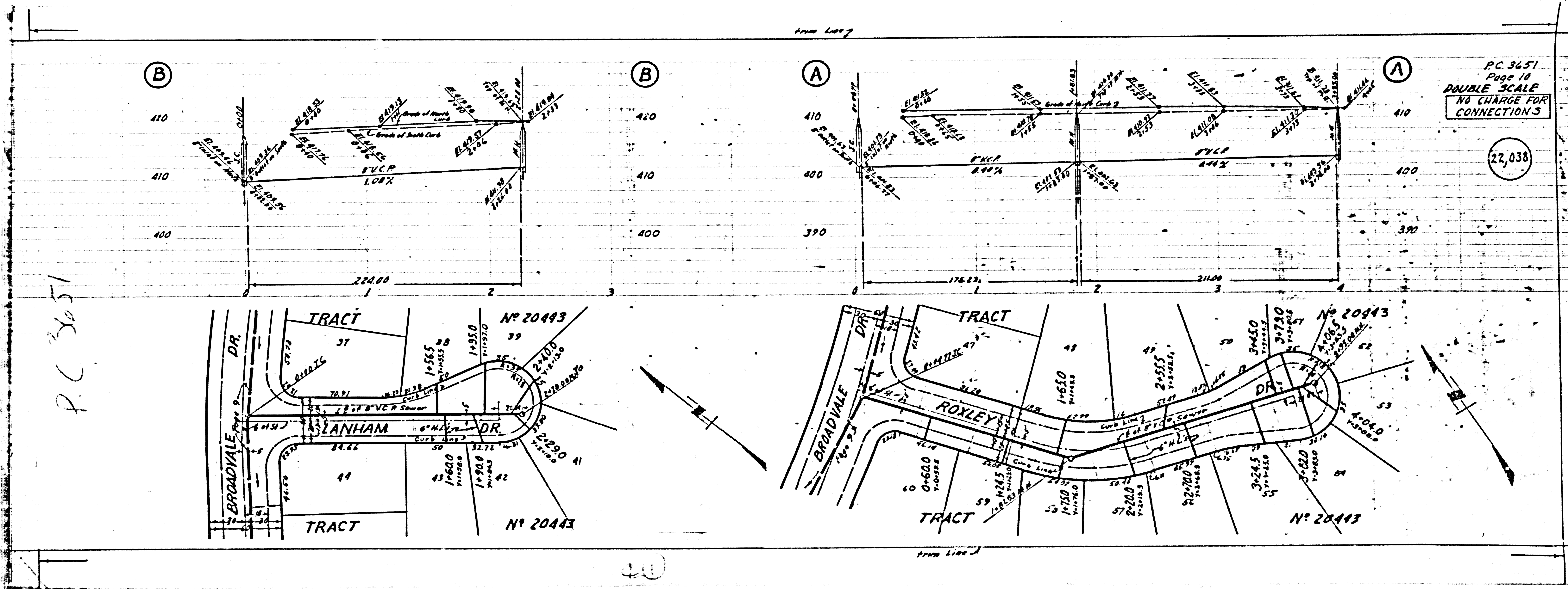
22,037

410  
400

Stationing, Corrected &  
Approved this page  
10-11-05



22,038



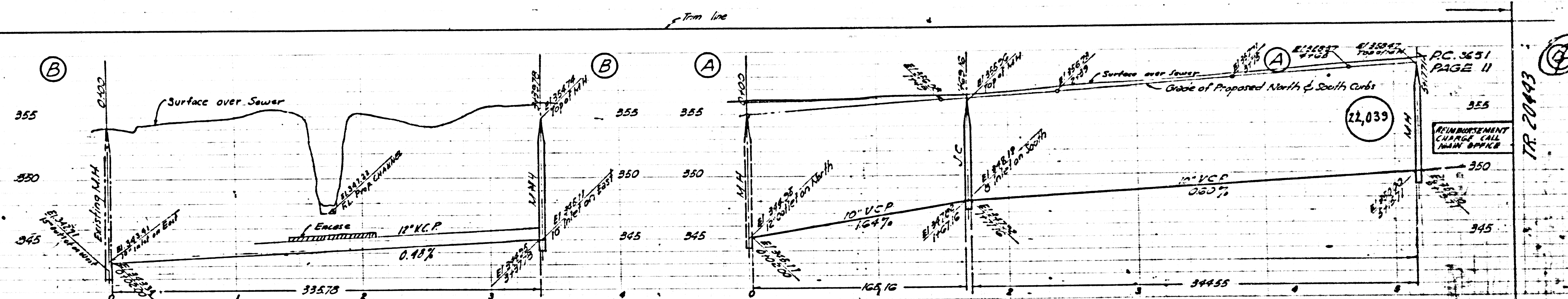
PC 3651  
 Page 16  
 DOUBLE SCALE  
 NO CHARGE FOR  
 CONNECTIONS

(22,038)

P.C. 3651

40

040  
MENT  
OFFICE



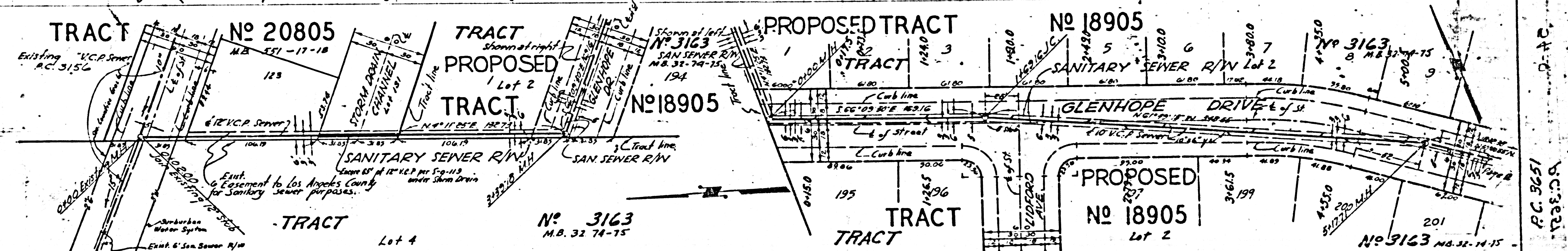
P.C. 3651  
PAGE 11

REIMBURSEMENT  
CHARGE CALL  
MAIN OFFICE

22,039

TR 20493

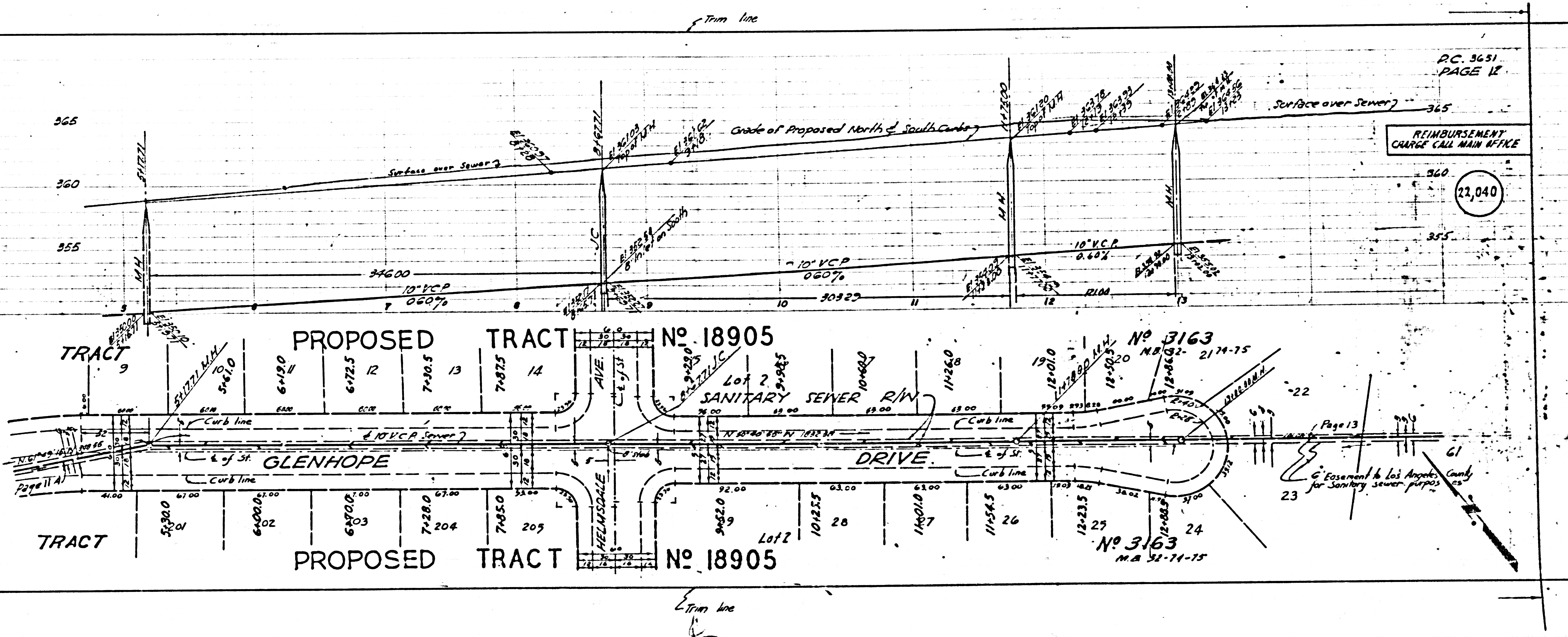
P.C. 3651  
B.C. 3651

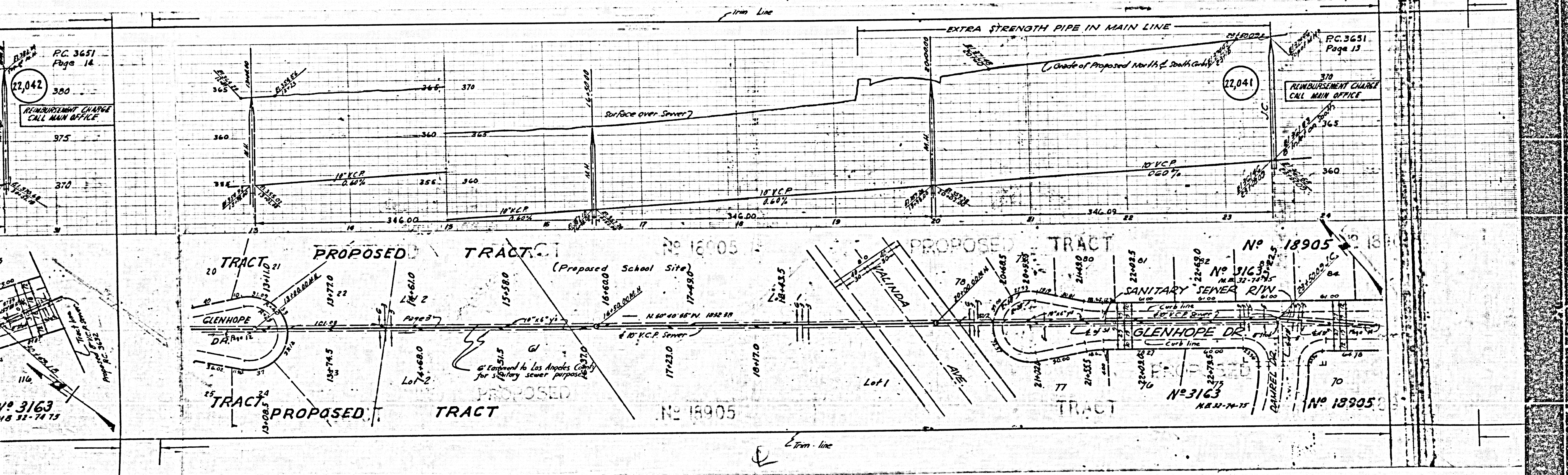


Form line

REIMBURSEMENT  
CHARGE CALL MAIN OFFICE

22,040





PC. 3651  
Page 14  
22,042  
REIMBURSEMENT CHARGE  
CALL MAIN OFFICE

PC. 3651  
Page 13  
370  
REIMBURSEMENT CHARGE  
CALL MAIN OFFICE

No 3163  
M.S. 32-74-75

No 3163  
M.S. 32-74-75

No 18905

No 18905

PROPOSED TRACT

PROPOSED TRACT

PROPOSED TRACT

No 18905

TRACT

TRACT

TRACT

TRACT

No 18905

GLENHOPE DR.

GLENHOPE DR.

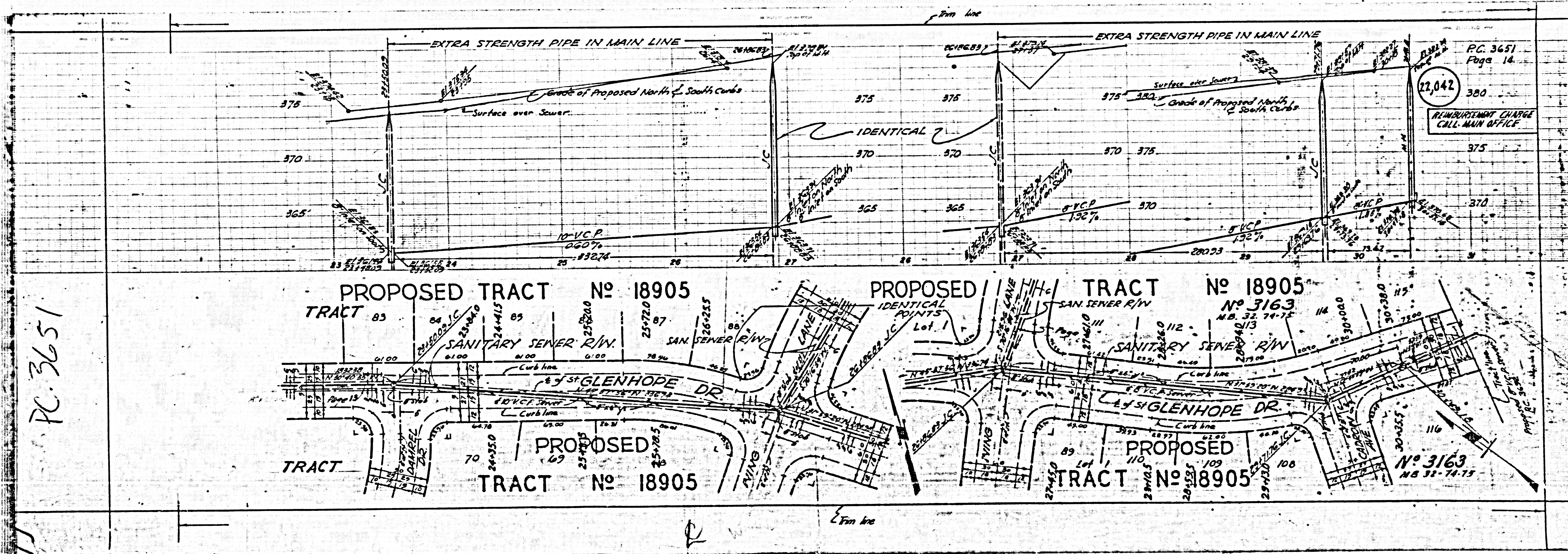
(Proposed School Site)

SANITARY SEWER R/W

MALINDA AVE.

CHAMPEL DR.

Trim line



PC 3651  
Page 14

22,042

REIMBURSEMENT CHARGE  
CALL MAIN OFFICE

PC 3651