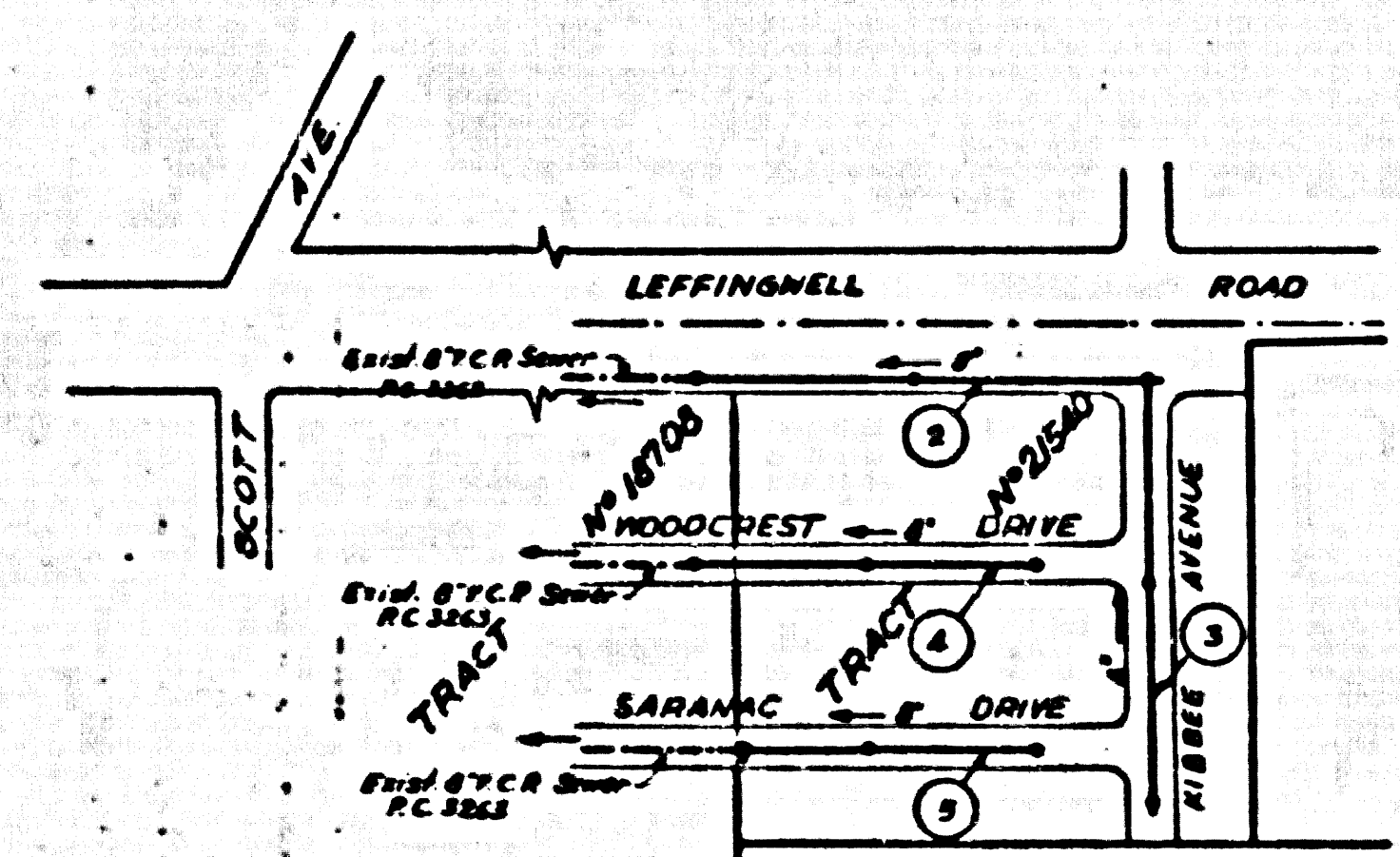


SANITARY SEWERS DIST. NO. 4.2

PAGE 1.
RC 3653



INDEX MAP
TRACT NO 21540
RC 3653
SCALE: 1"=300'

B.M. S.Y. 853, 1552, C.S. Monument
at East of intersection of Slony Rd.
(Running North and Leffingwell Rd.)
S' South of E Leffingwell Rd.
ELEV. 228.487

NOTE:

- Provide stakes on the property lines or property lines produced at right angles to the corner line at the corner line of each manhole.
- No representative of the County Engineer will survey or layout any portion of the work.
- The owner or his authorized representative shall furnish the County Engineer with grade sheets and stations for all house laterals and Y branches and shall provide stakes for them at their proper locations with stationing plainly marked. Any change in location shall be requested in writing by the owner or his representative.
- No revisions shall be made in these plans without the approval of the County Engineer.
1. Use standard manhole frames and covers, S-117.
 2. Use standard strength pipe except as noted.
 3. Use cement mortar for all vitrified clay pipe joints.
 4. Resurface all trenches within paved area to meet L.A. County Road Dept. or California State Highway Dept. requirements in accordance with permit.
 5. Excavate four feet of cover at points of interference with poles, S-119.
 6. House laterals to be constructed with laterals at property line _____ feet below curb grade except as noted.
 7. All structures shall be brick sewer structures, S-104.
 8. For allowable leakage test, see Formula No. _____ Spec. 81.
 9. Manhole tops to conform Right-Of-Way-to-be-47 above finish grade.

SHEET NO	PAGES
1	1-5

NO CHARGE FOR CONNECTIONS
-JK Order 10-4-55

PROFILE, ALIGNMENT AND GRADE OF
SANITARY SEWERS
TO BE CONSTRUCTED IN

TRACT NO 21540

PRIVATE CONTRACT NO. 3653
W. S. 34
1 SHEET

Scale: VERT. 1"=4' HORIZ. 1"=40'

PREPARED IN THE OFFICE OF
KEMMERER ENGINEERING CO. INC.

James C. Kemmerer
C. E. No. 8244

FOR LEGEND SEE PLAN NO. S-a-44

23,070
(5)

NOTE:

Grades to which this improvement is to be constructed are shown on plans and profiles. Grade points for top of curbs, center line of streets, or center line of alleys are shown by stakes on profiles. At all points between designated points the grade shall be established so as to conform to a straight line drawn between said designated points.

Elevations are in feet above U.S.C.S. datum or mean sea level.

This drawing and the data hereon are hereby made a part of the specifications.

Work shall be constructed according to specifications on file in the office of the County Engineer and shall be prosecuted only in the presence of the County Engineer.

Before work can be started, the contractor must obtain a permit to excavate in accordance to County Ordinance No. 104, 106 W. 2nd St. and make a deposit with the County Engineer, 157 1/2 Broadway - Room 324 sufficient to cover the cost of construction inspection and record plan.

Approval of this plan by the County of Los Angeles does not constitute a representation as to the accuracy of the location of or the existence or non-existence of any underground utility, pipe, or structure within the limits of this project. This note applies to all sheets.

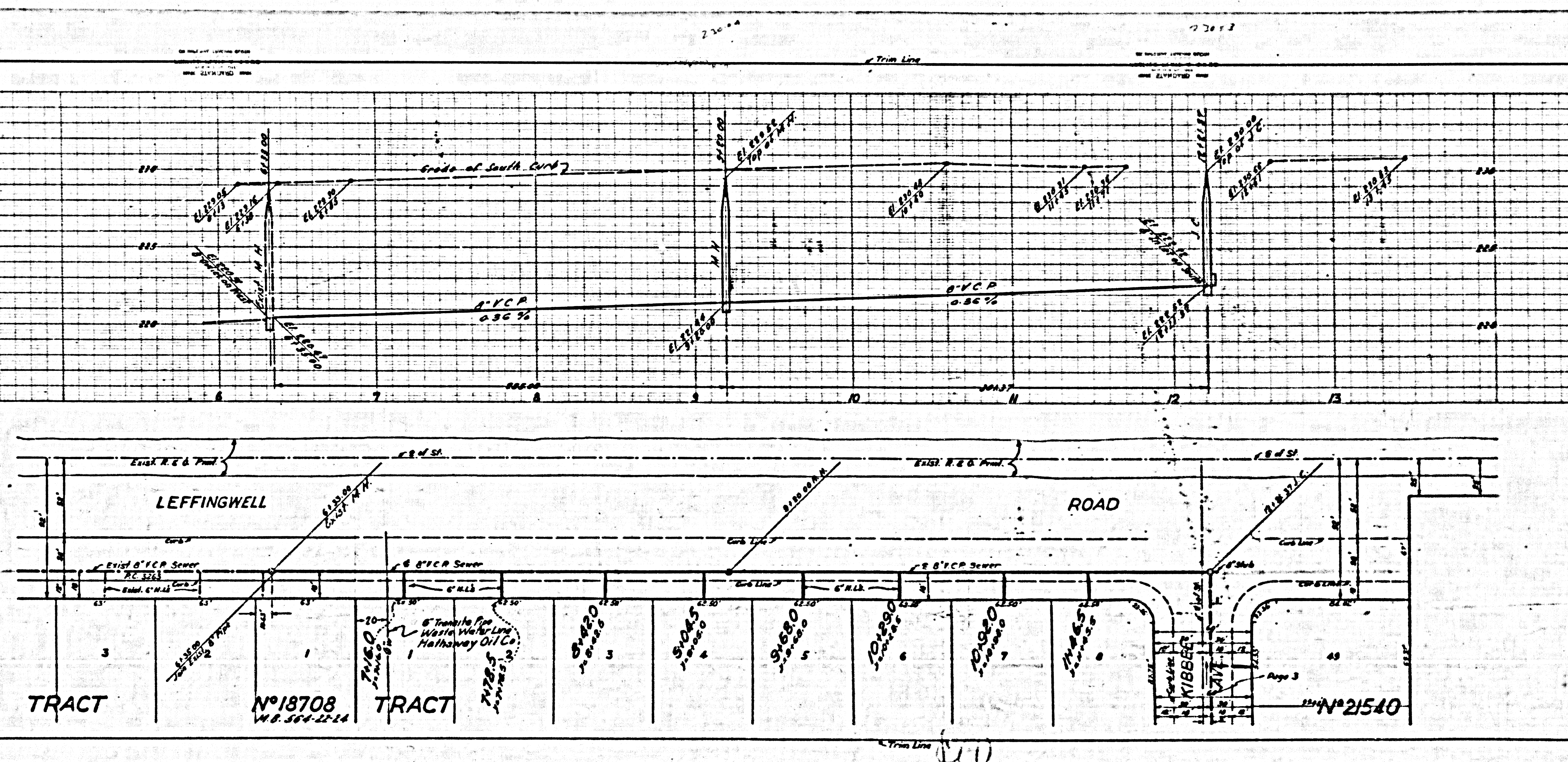
If work is to be done in a State Highway, a permit must be obtained from the State of California, Division of Highways, 120 South Spring Street.

COUNTY OF LOS ANGELES, CALIFORNIA

Approved, *James A. Lawrence* County Engineer
A. P. Collins Civil Engineer
Checked by *Robert J. ...* Civil Engineer
Office of County Engineer, Rm. 41, S. W. 78th St.

Approved, *A. M. ...*
CITY OF LOS ANGELES, CALIFORNIA
Checked by *...*
Office of City Engineer, Rm. 41, S. W. 78th St.

Checked 7-13-56 *McLaren*



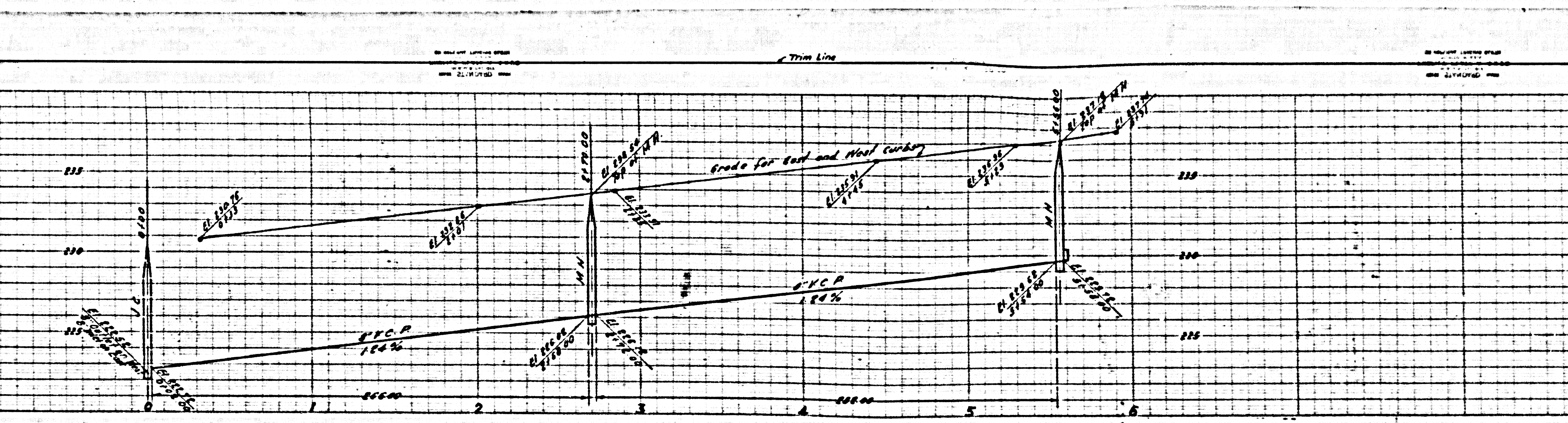
PAGE 2
 RC. 365J

NO CHARGE FOR
 CONNECTIONS

23,071



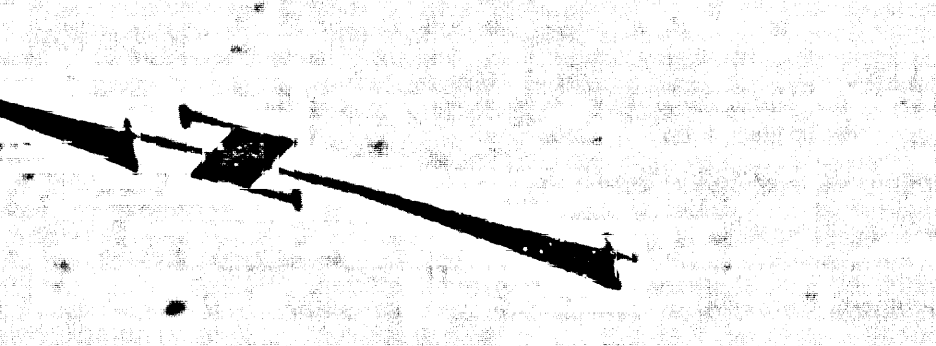
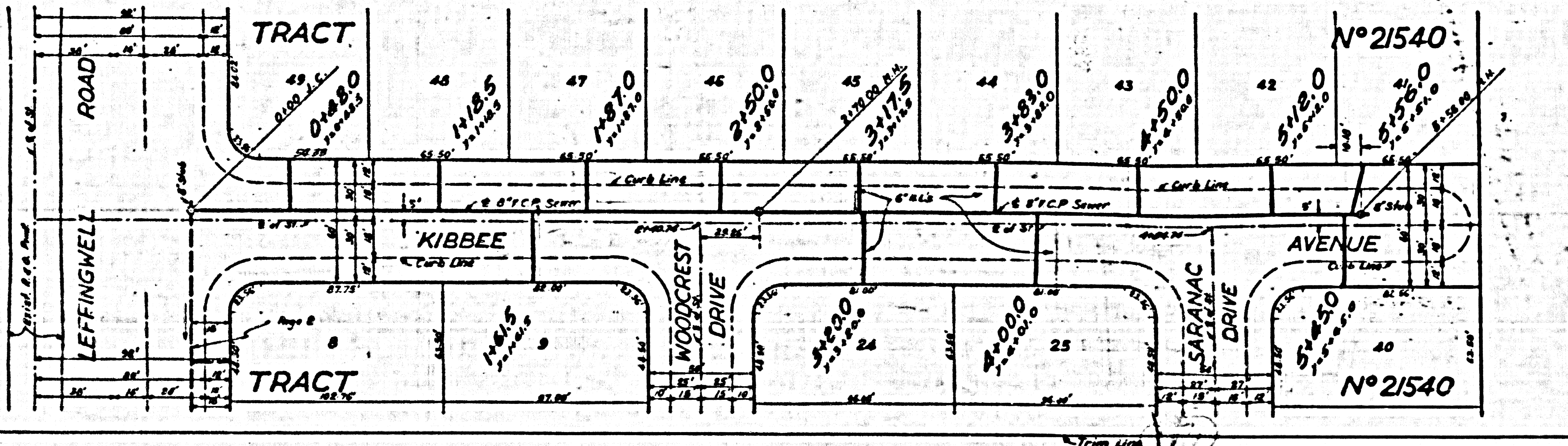
Trim Line



PAGE 3
PC 36.53

NO CHARGE FOR
CONNECTIONS

23,072

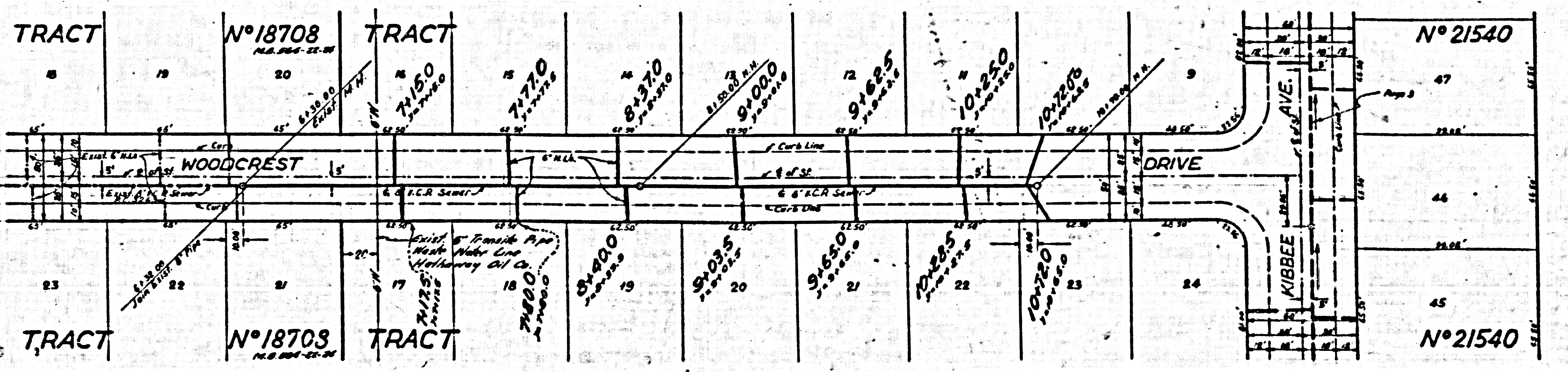


7/21/31
M.L. Allen
Trim Log

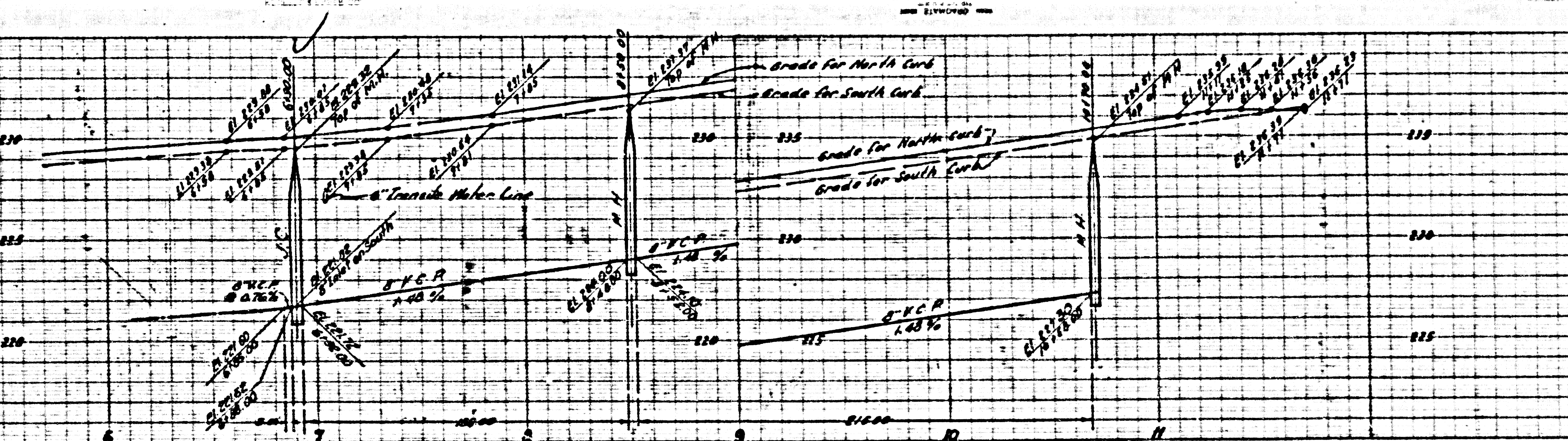
PAGE 4
P.C. 16.53

NO CHARGE FOR
CONNECTIONS

23,073



Trim Line ML W

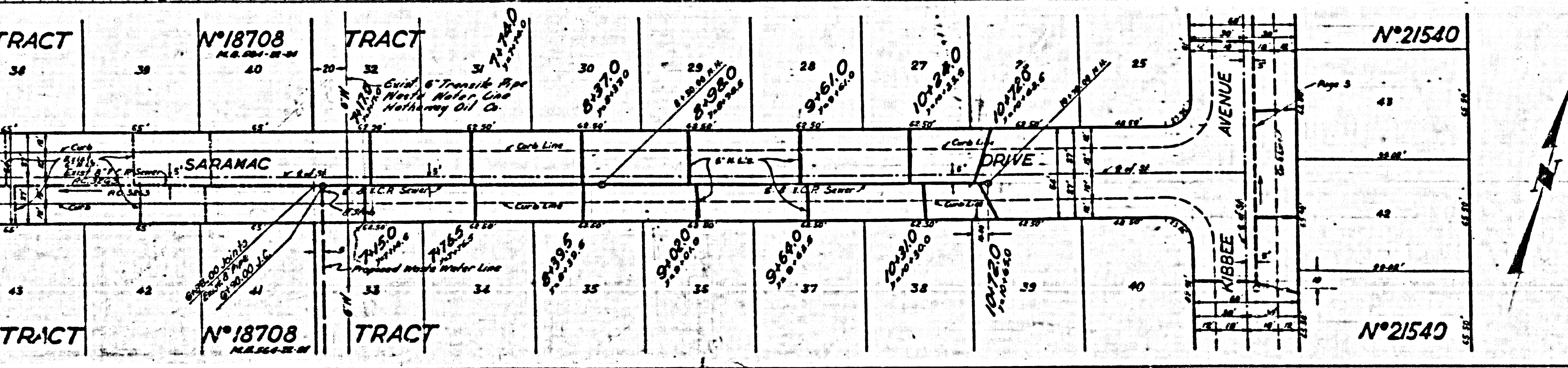


PAGE 5.
PC. 3652

NO CHARGE FOR
CONNECTIONS

23074

PC. 3652



Trim Line