

B.M. 561046, Page 450
 Spike 8' high in S.E. Cor. of corner
 Northwest of S.W. 1/4 Sec. 135 N.W.
 of E. of Hacienda Blvd. and N. 530' W.
 of N. railroad line Valley Blvd. Imp. in
 Puente

Trim Line

PUENTE BLDG. DIST. N92

- NOTE:**
 Provide stakes on the property lines or property lines produced at right angles to the sewer line at the center line of each manhole.
- No representative of the County Engineer will survey or layout any portion of the work.
- The owner or his authorized representative shall furnish the County Engineer with grade sheets and stations for all house laterals and T branches and shall provide stakes for them at their proper locations with stationing plainly marked. Any change in location shall be requested in writing by the owner or his representative.
- No revisions shall be made in these plans without the approval of the County Engineer.
1. Use standard manhole frames and covers, S-o-117.
 2. Use standard strength pipe except as noted.
 3. Use cement mortar for all vitrified clay pipe joints.
 4. Resurface all trench within paved area to meet L.A. County Road Dept. or California State Highway Dept. requirements in accordance with permit.
 5. Encase four feet of sewer at points of interference with poles, S-o-119.
 6. House laterals to be constructed with inverts at property line 6 feet below curb grade except as noted.
 7. All structures shall be brick sewer structures, S-o-104.
 8. For allowable leakage test, use Formula No. 1 Spec's., Sec. 51.
 9. Manhole tops in unimproved Rights-Of-Way to be 6" above finish grade.

PROFILE, ALIGNMENT AND GRADE OF
SANITARY SEWERS
 TO BE CONSTRUCTED IN
**WALBROOK DRIVE,
 HACIENDA BLVD.**

PC 3657
 PAGE 1

22043

PRIVATE CONTRACT NO. 3657
 W. S. 38
 1 SHEET

Scale: $\frac{1}{4}$ " = 1'-0"
 1/8" = 1'-0"
 AUG. 1955
 PREPARED IN THE OFFICES OF

Edward J. Eggen
 S.E.E. No. 5528

FOR LEGEND SEE PLAN NO. S-o-64

NOTE:
 Grades to which this improvement is to be constructed are shown on plans and profiles. Grade points for top of curb, corner line of streets, or corner line of alleys are shown by circles on profiles. As all points between designated points the grade shall be established so as to conform to a straight line drawn between said designated points.

Elevations are in feet above U.S.G.S. datum or mean sea level.

This drawing and the data hereon are hereby made a part of the specifications.

Work shall be constructed according to specifications on file in the office of the County Engineer and shall be prosecuted only in the presence of the County Engineer.

Before work can be started, the contractor must obtain a permit to encroach in County streets from the L.A. County Road Dept., 108 W. 1st St. and make a deposit with the County Engineer, Room 210, 220 So. Broadway, sufficient to cover the cost of construction inspection and record plans.

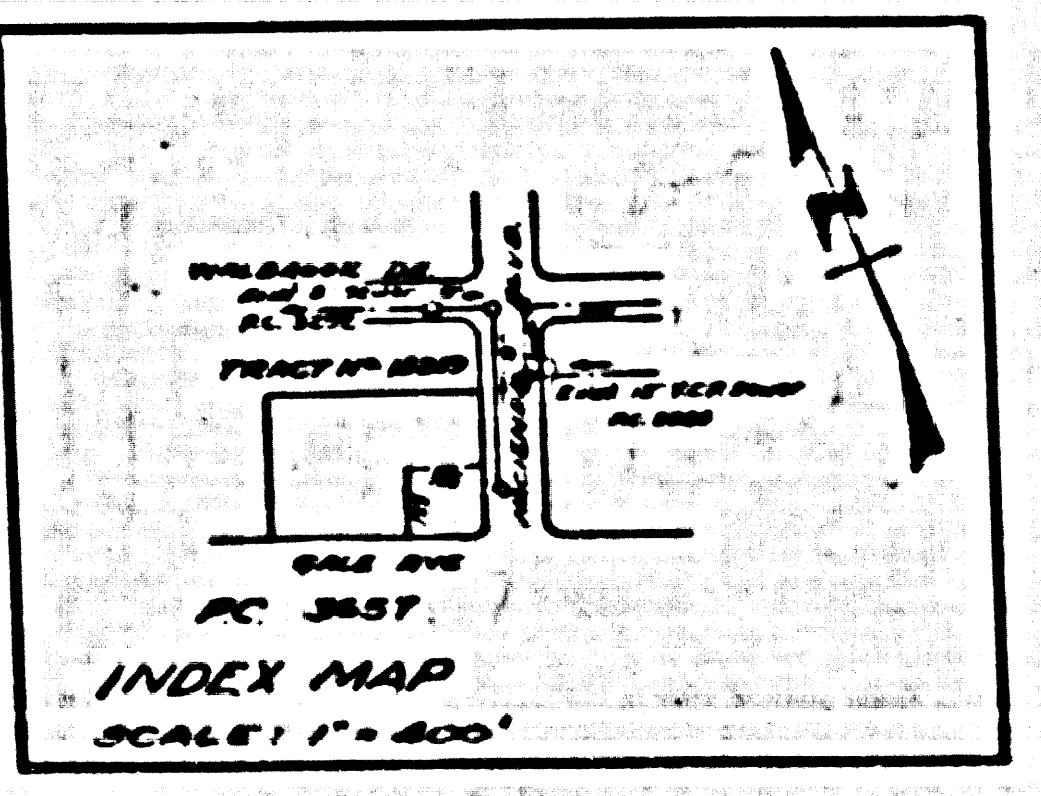
Approval of this plan by the County of Los Angeles does not constitute a representation as to the accuracy of the location of or the existence or non-existence of any underground utility, pipe, or structure within the limits of this project. This note applies to all sheets.

If work is to be done in a State Highway, a permit must be obtained from the State of California, Division of Highways, 120 South Spring Street.

COUNTY OF LOS ANGELES, CALIFORNIA
 Approved, William J. Fox, County Engineer
 Approved, A. M. Rasm
 ONE INCH = 40 FEET SAN. DIST. NO. 21
A. M. Rasm
 S.E.E. No. 5528
 Dated this 1st day of August, 1955
 Office of County Engineer & Dep. S.E.E. No. 7160

Sheet	Page
1	1-2

No Changes For
 Comments
 - J. V. Decker 8-22-55



Approved, Industrial Waste Division
 by *Robert Ricketts* 8/22/55

Checked *W. J. Fox*
 Trim Line

PC 3657 - 22043

PC 3657

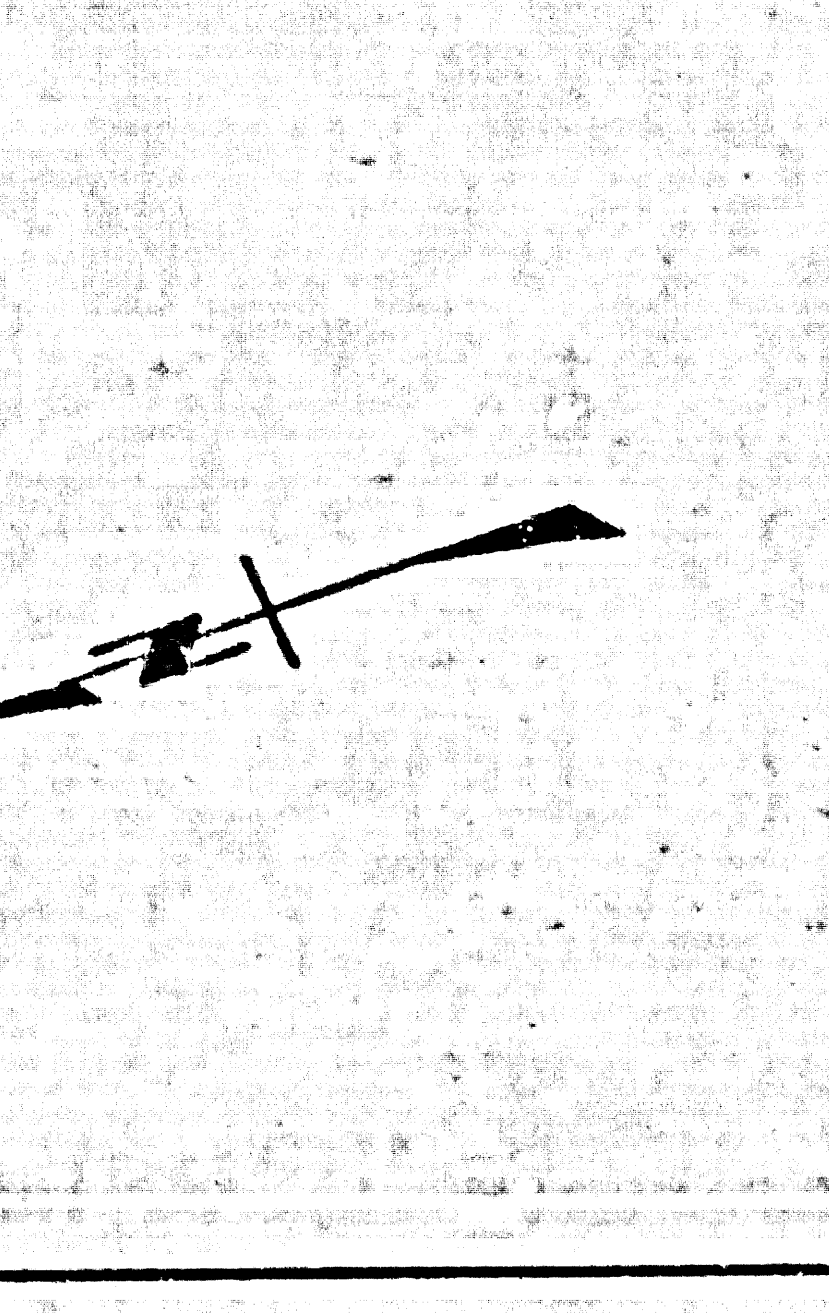
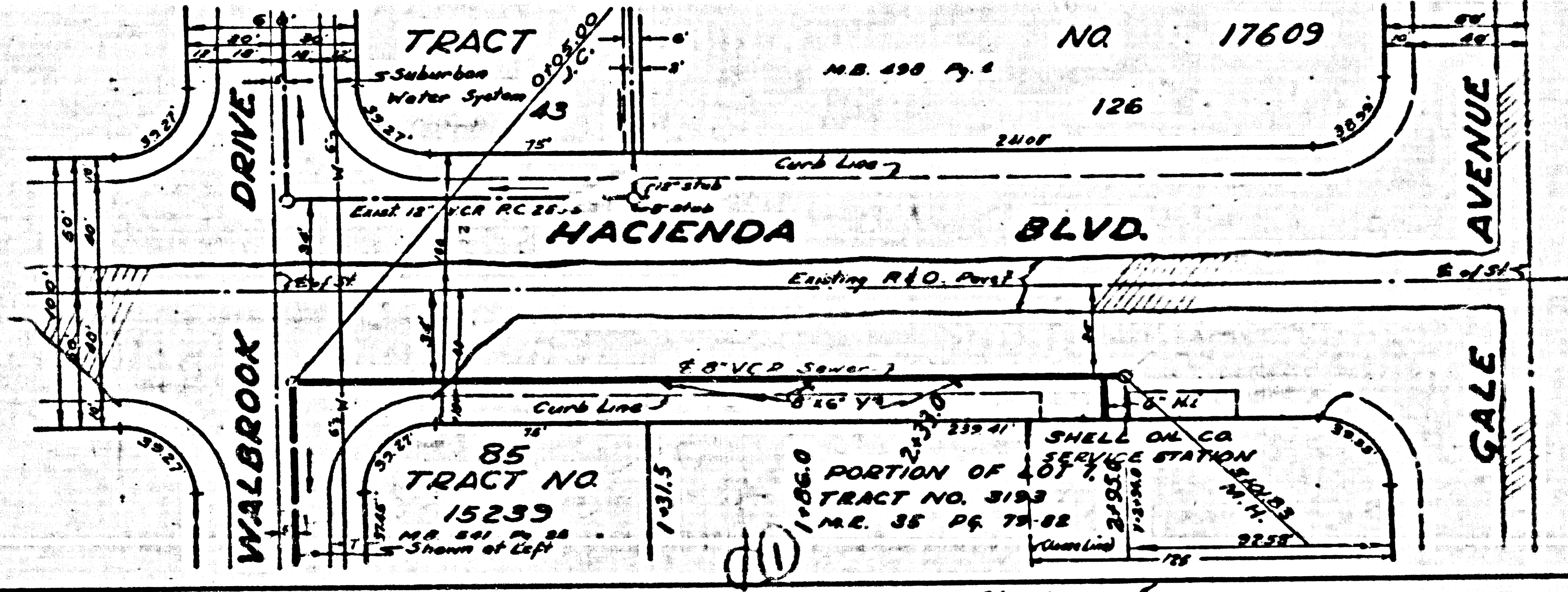
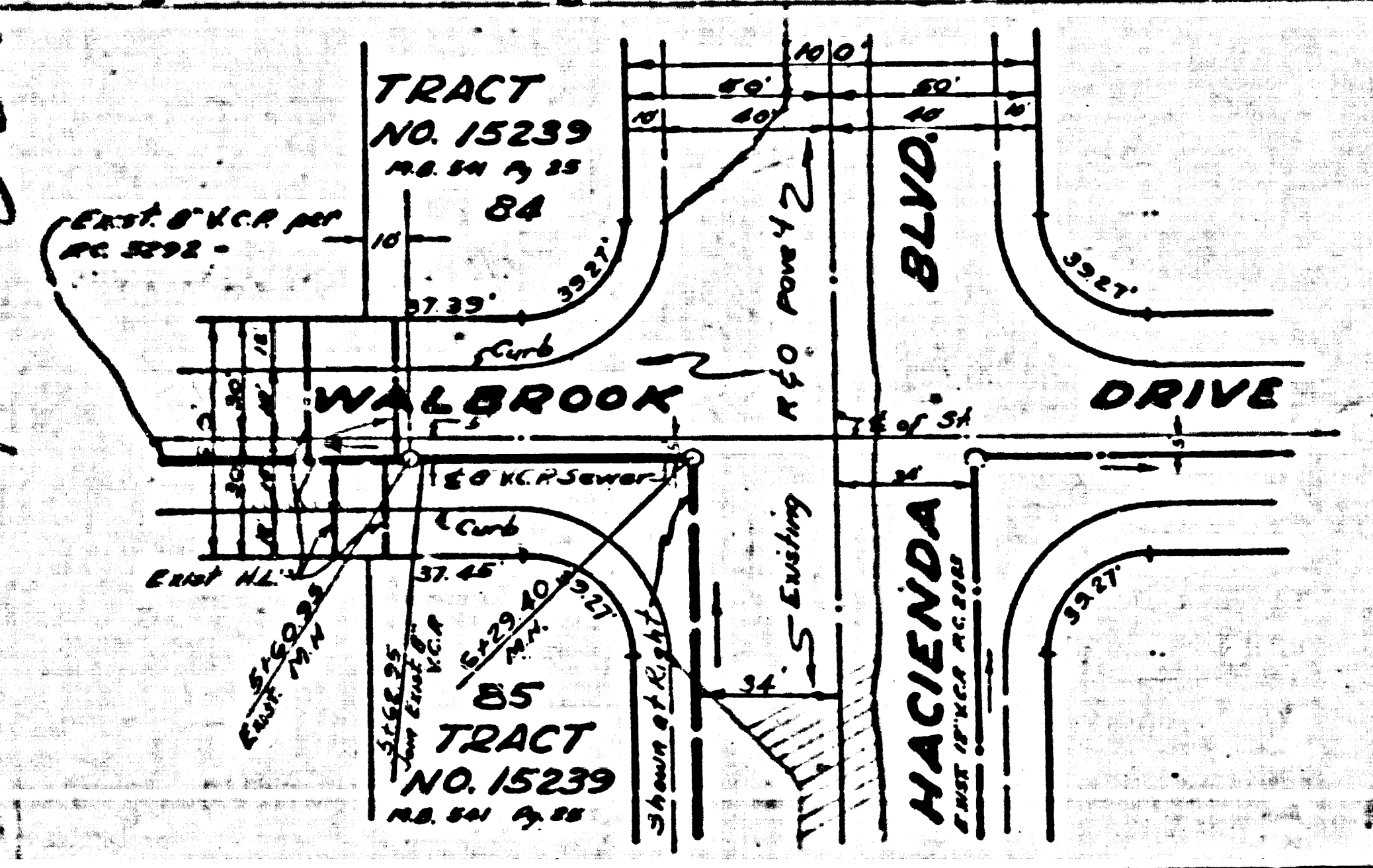
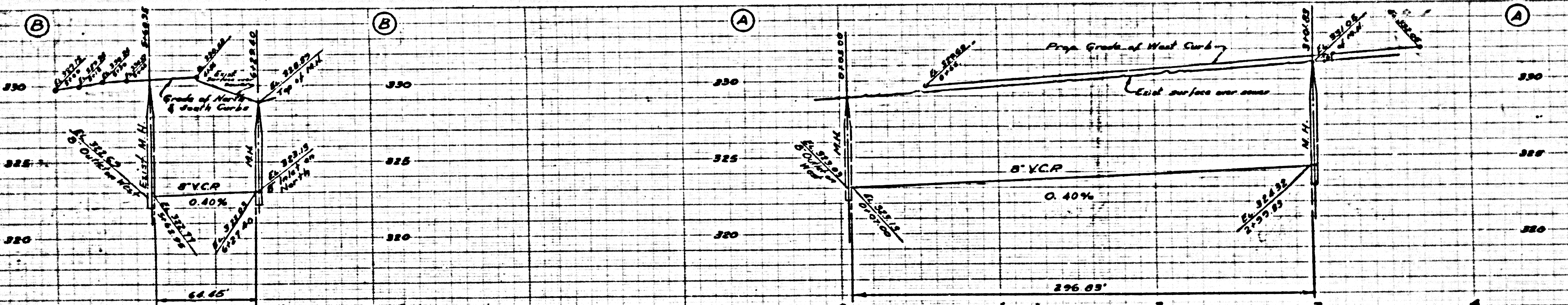
Trim Line

PC 3657
PAGE 2

NO CHARGE FOR
CONNECTIONS

2204

NOTE: Do Not Allow This
8" SEWER TO BE
EXTENDED SOUTHERLY
OF GALE AVE. SEE
MAIN OFFICE



Trim Line