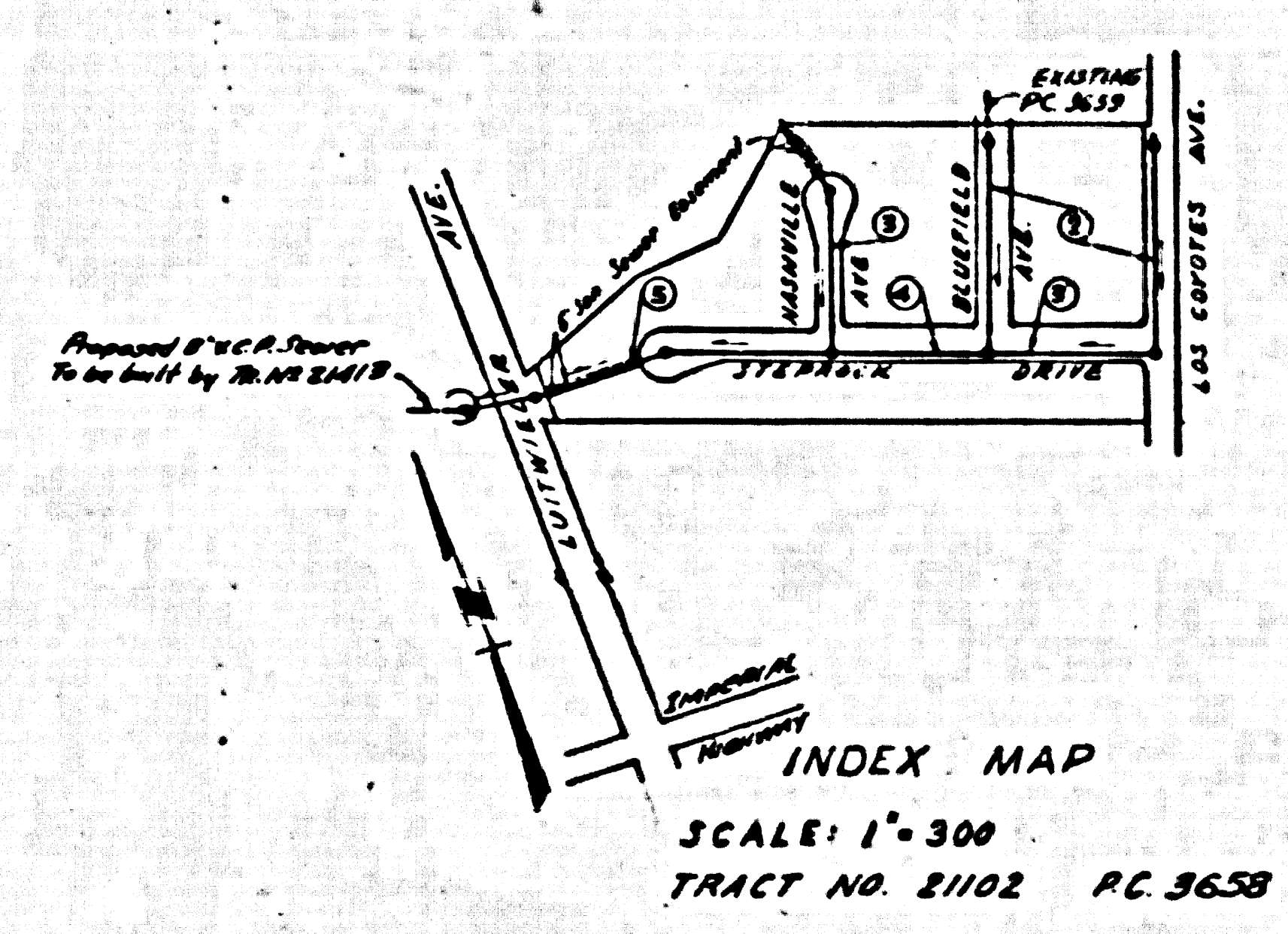


GE 2
C-3658

FOR
CONS.



8 M. S.P. 1125 lead & nail in conc.
headwall 25'± So of E. Imperial
highway & about 200' E. of Las
Flores Ave. Elev. 172.671

- NOTE:
1. Provide stakes on the property lines or property lines produced at right angles to the cover line at the center line of each manhole.
 2. No representative of the County Engineer will survey or layout any portion of the work.
 3. The owner or his authorized representative shall furnish the County Engineer with grade sheets and stations for all house laterals and Y branches and shall provide stakes for them at their proper locations with stationing plainly marked. Any change in location shall be requested in writing by the owner or his representative.
 4. No revisions shall be made in these plans without the approval of the County Engineer.
 5. Use standard manhole frames and covers, S-a-117.
 6. Use standard strength pipe except as noted.
 7. Use cement mortar for all vitrified clay pipe joints.
 8. Resurface all trench within paved area to meet L.A. County Road Dept. or California State Highway Dept. requirements in accordance with permit.
 9. Encase four feet of sewer at points of interference with poles, S-a-119.
 10. Manhole laterals to be constructed with inverts at property line _____ feet below curb grade except as noted.
 11. All structures shall be brick sewer structures, S-a-104.
 12. For allowable leakage test, see Formula No. _____ Spec'n, Sec. 51.
 13. Manhole tops in unimproved Rights-Of-Way to be 6" above finish grade.

NORWALK BLDG. DIST. N^o 4.2

SHEET NO	PAGES
1	1-5

NO CHARGE FOR
CONNECTIONS
Effective 10-9-55

Checked 11-22-55 W. J. Fox

PROFILE, ALIGNMENT AND GRADE OF
SANITARY SEWERS
TO BE CONSTRUCTED IN

TRACT N^o 21102

PRIVATE CONTRACT NO. 3658
W. S. 34
1 SHEET

Scale: VERT. 1"=4'
HORIZ. 1"=40' JULY-1955
PREPARED IN THE OFFICES OF

KEMMERER ENGINEERING CO., INC.
Wm. C. Kemmerer
Reg. C.E. No. 2244

FOR LEGEND SEE PLAN NO. S-a-64

NOTE:

Grades to which this improvement is to be constructed are shown on plans and profiles. Grade points for top of curb, center line of street, or center line of alleys are shown by circles on profiles. All points between designated points the grade shall be established so as to conform to a straight line drawn between said designated points.

Sections are in feet above U.S.S.L. datum or mean sea level.

This drawing and the data hereon are hereby made a part of the specifications.

Work shall be constructed according to specifications on file in the office of the County Engineer and shall be prosecuted only in the presence of the County Engineer.

Before work can be started, the contractor must obtain a permit to encroach in County streets from the L.A. County Road Dept., 100 W. 2nd St. and make a deposit with the County Engineer, Room 218, 1260 South Broadway, sufficient to cover the cost of construction inspection and record plans.

Approval of this plan by the County of Los Angeles does not constitute a representation as to the accuracy of the location of or the existence or non-existence of any underground utility, pipe, or structure within the limits of this project. This note applies to all sheets.

If work is to be done in a State Highway, a permit must be obtained from the State of California, Division of Highways, 130 South Spring Street.

COUNTY OF LOS ANGELES, CALIFORNIA

Approved, William J. Fox, County Engineer
Approved, A. M. Rose
CHIEF ENGINEER, SANITARY DIST. NO. 4

BY *W.C. Kemmerer* COUNTY ENGINEER

Checked By *W.C. Kemmerer* 10-9-55
Office of County Engineer, Reg. C.E. No. 2244

PAGE 1
R.C. 3658

21,850

(5)

TRACT NO. 21102

TRACT NO. 21102

025

PAGE 3
P.C. 3658

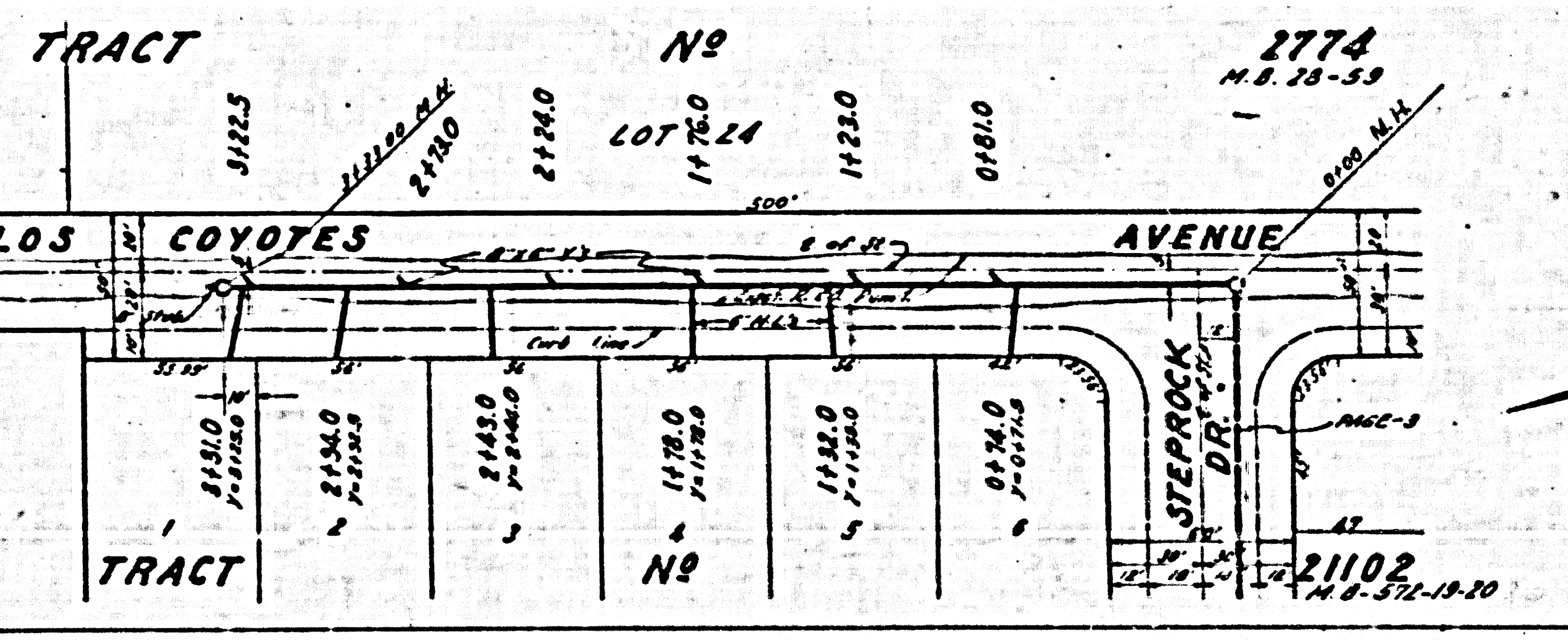
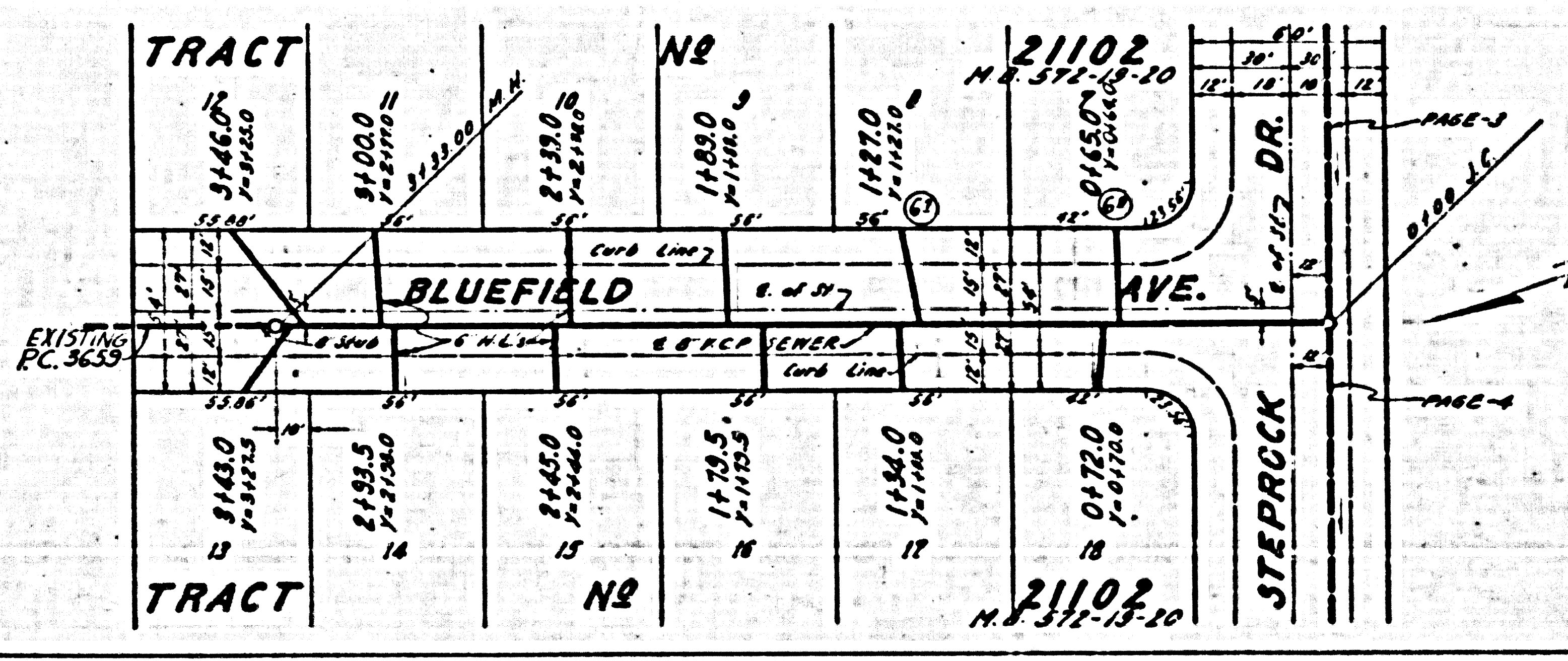
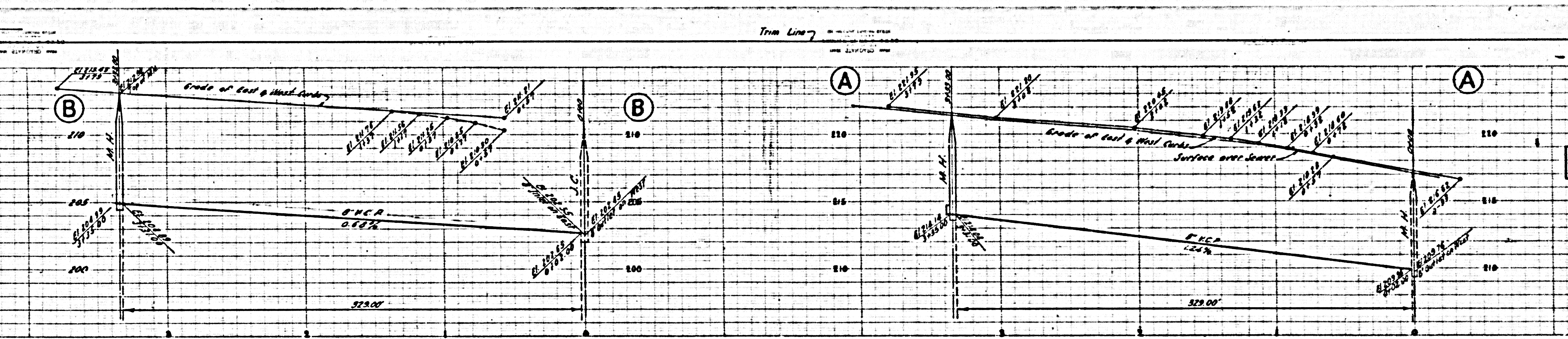
PAGE 2
P.C. 3658

CHARGE FOR
CONNECTIONS

NO CHARGE FOR
CONNECTIONS

21,852

21,851

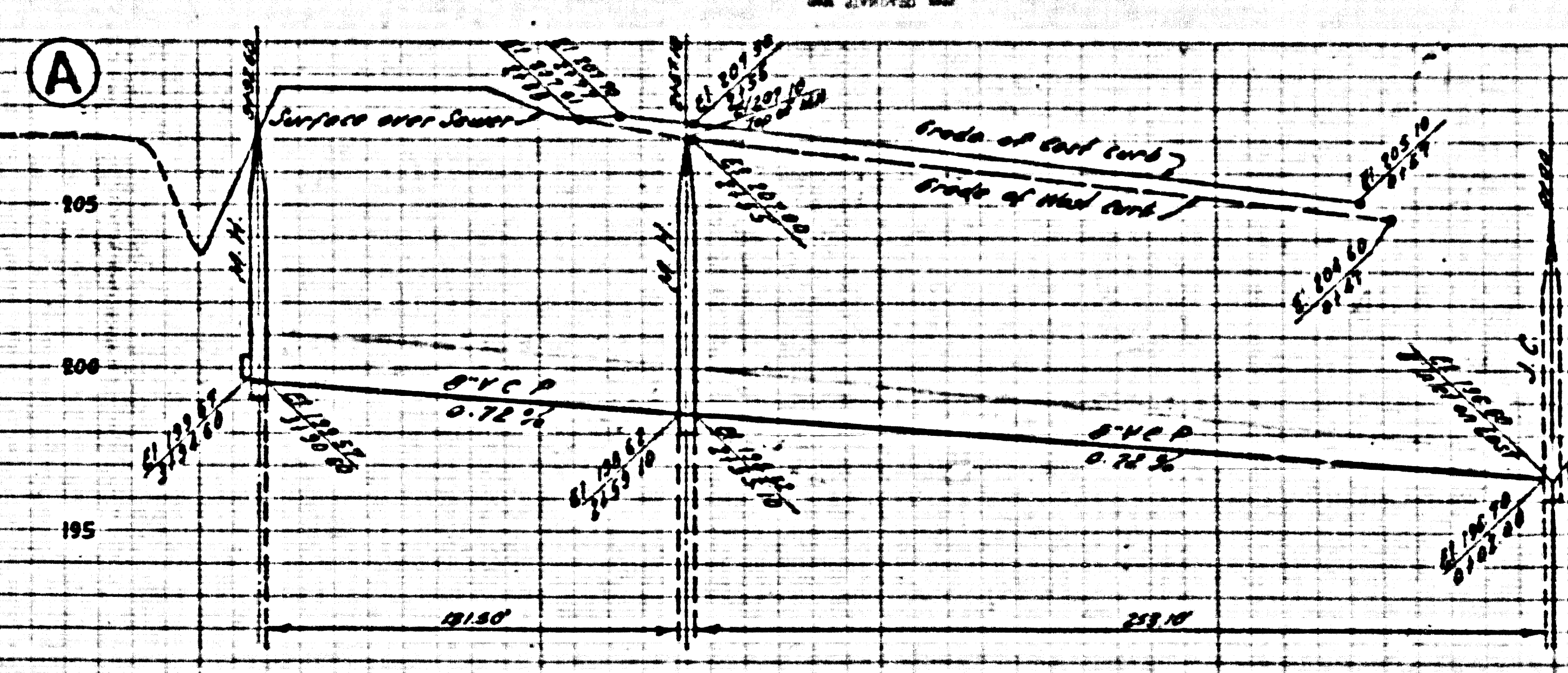
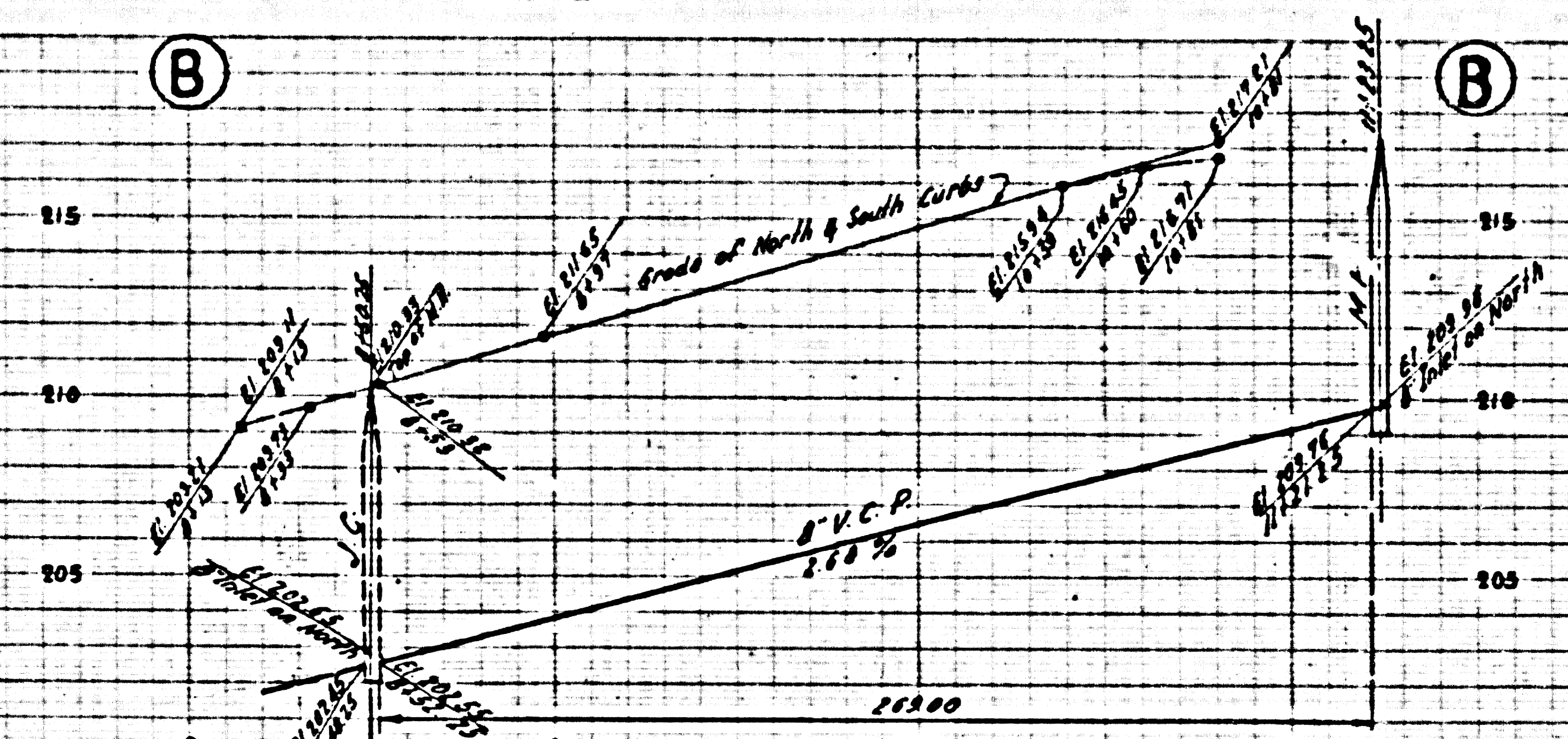


21

Trim Line

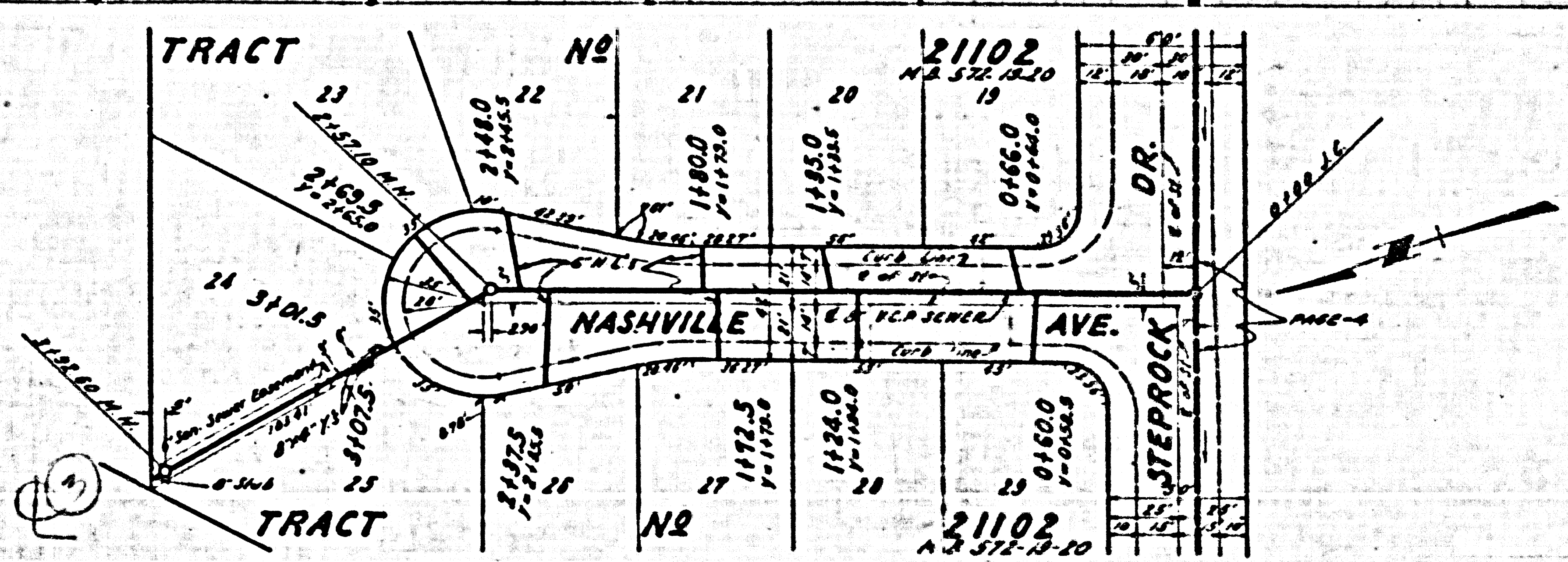
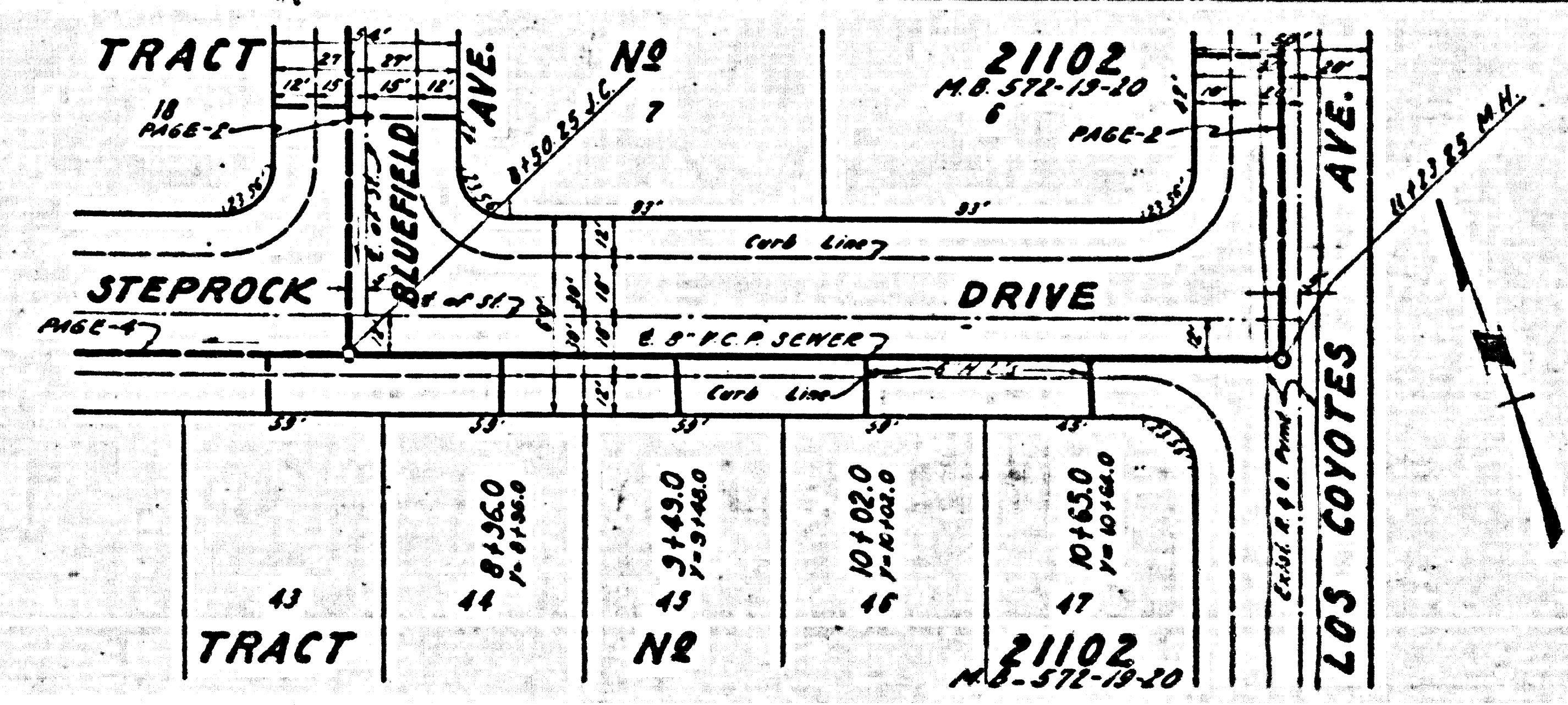
FOR
CONNS

21853



NO CHARGE FOR
CONNECTIONS

21852



Trim Line

