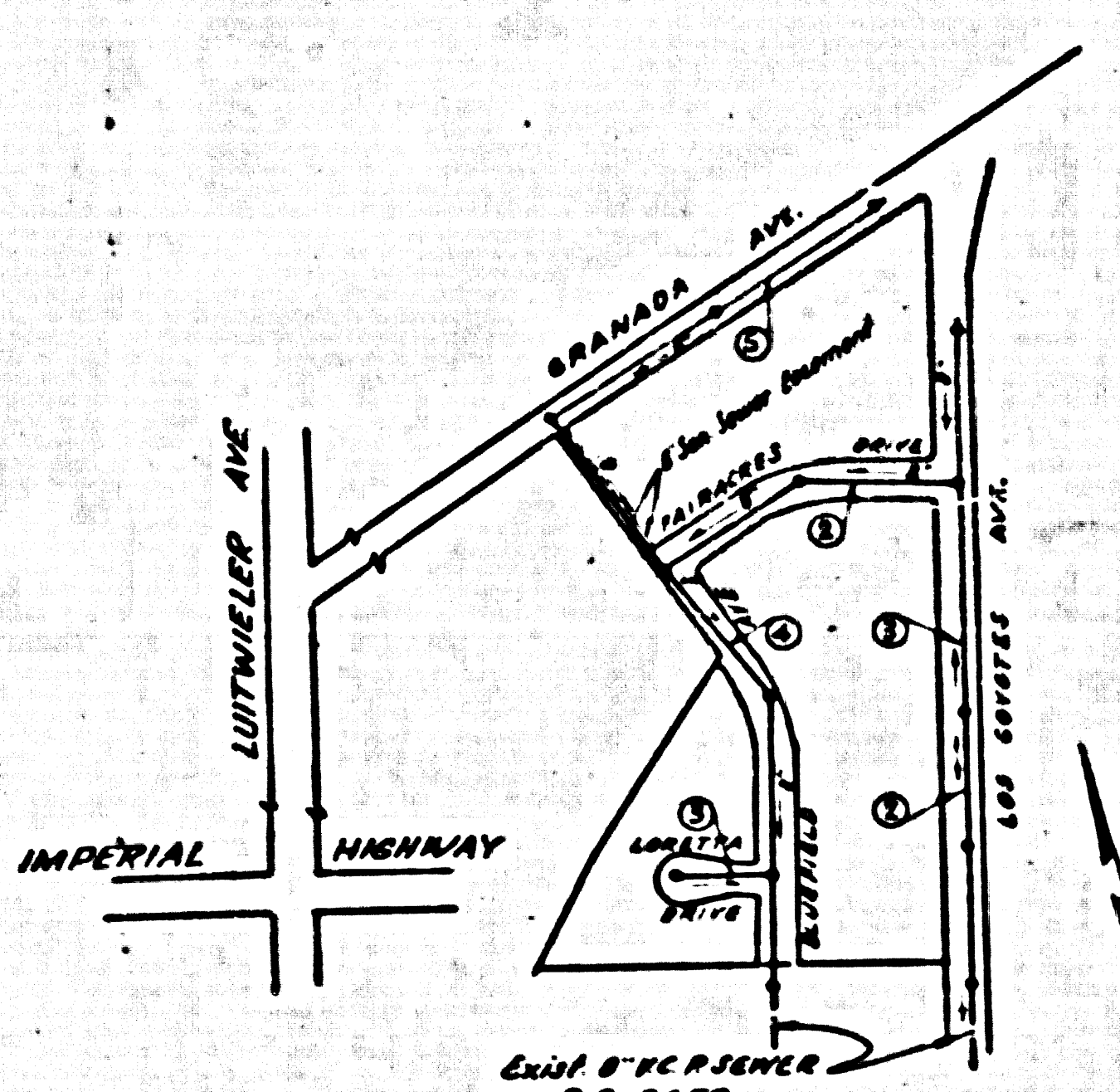


NORWALK BLDG. DIST. NO 4-2



INDEX MAP
SCALE: 1" = 300'
TRACT NO 2101 RC.3659

B. M. S. N. 124 lead & nail in conc. headwall 25' S. of & Imperial highway & about 200' E. of Las Flores Ave. Elev. 172.671

- NOTE:**
1. Provide stakes on the property lines or property lines produced at right angles to the cover line of the corner line of each manhole.
 2. No representative of the County Engineer will survey or layout any portion of the work.
 3. The owner or his authorized representative shall furnish the County Engineer with grade sheets and station for all house laterals and Y branches and shall provide stakes for them at their proper locations with stationing plainly marked. Any change in location shall be requested in writing by the owner or his representative.
 4. No revisions shall be made in these plans without the approval of the County Engineer.
 5. Use standard manhole frames and covers, S-a-117.
 6. Use standard strength pipe except as noted.
 7. Use cement mortar for all vitrified clay pipe joints.
 8. Resurface all trench with paved area to meet A. County Road Dept. or California State Highway Dept. requirements in accordance with permit.
 9. Excavate four feet of cover at points of interference with poles, S-a-119.
 10. House laterals to be constructed with inverts at property line _____ feet below curb grade except as noted.
 11. All structures shall be brick sewer structures, S-a-104.
 12. For allowable leakage test, see Formula No. _____ Spec'n, Sec. 81.
 13. Manhole tops in unimproved Rights-Of-Way to be at least above finish grade.

SHEET NO.	PAGES
1	1-5

NO CHARGE FOR CONNECTIONS
L. Curtis 10-10-55

PROFILE, ALIGNMENT AND GRADE OF
SANITARY SEWERS
TO BE CONSTRUCTED IN
TRACT NO 2101
PRIVATE CONTRACT NO. 3659
W. S. 34
1 SHEET
Scale: *VERT. 1" = 4'* *HORIZ. 1" = 40'* JULY-1955
PREPARED BY THE OFFICES OF
KEMNER ENGINEERS CO. INC.
Paul C. Thomson
FOR LEGEND SEE PLAN NO. S-a-44

NOTE:

Grades to which this improvement is to be constructed are shown on plans and profiles. Grade points for top of curb, center line of streets, or center line of alleys are shown by circles on profiles. At all points between designated points the grade shall be established so as to conform to a straight line drawn between said designated points.

Structures are in feet above U.S.C.S. datum or mean sea level.

This drawing and the data hereon are hereby made a part of the specifications. Work shall be constructed according to specifications on file in the office of the County Engineer and shall be prosecuted only in the presence of the County Engineer.

Before work can be started, the contractor must obtain a permit to construct in County streets from the L.A. County Road Dept., 120 W. 2nd St. and make a deposit with the County Engineer, Room 318, 253 South Broadway, sufficient to cover the cost of construction inspection and record plans.

Approval of this plan by the County of Los Angeles does not constitute a representation as to the accuracy of the location of or the existence or maintenance of any underground utility, pipe, or structure within the limits of this project. This note applies to all sheets.

If work is to be done in a State Highway, a permit must be obtained from the State of California, Division of Highways, 120 South Spring Street.

COUNTY OF LOS ANGELES, CALIFORNIA
Approved, William J. Fox, County Engineer
Approved, A. M. Evans
BY *A. P. Collins* *D. J. Thomson*
Sanitation Engineer Office Engineer
Checked by *P. Collins 10-10-55*
Office of County Engineer, Reg. C. E. No. 10642

PAGE 1
RC.3659

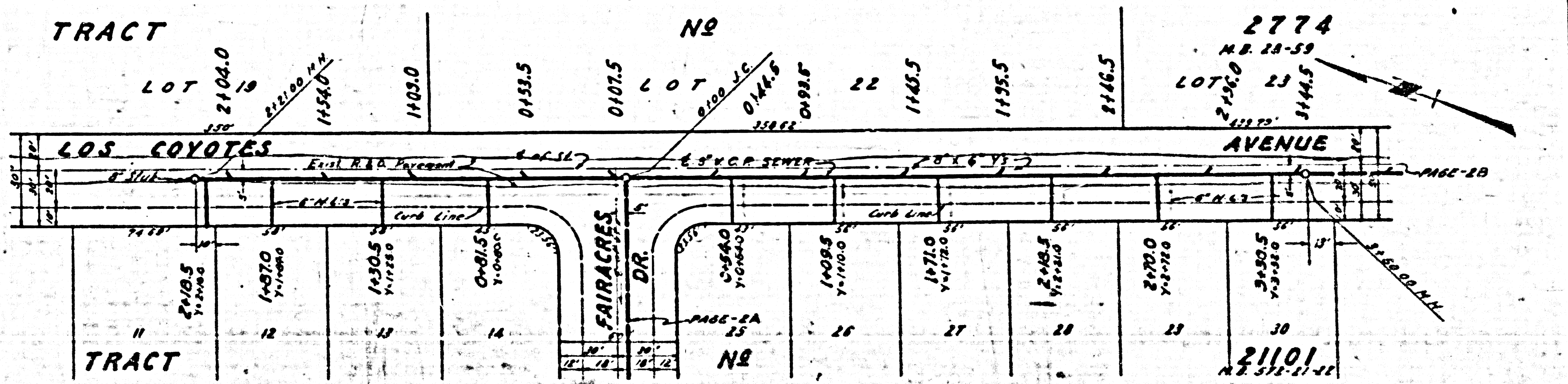
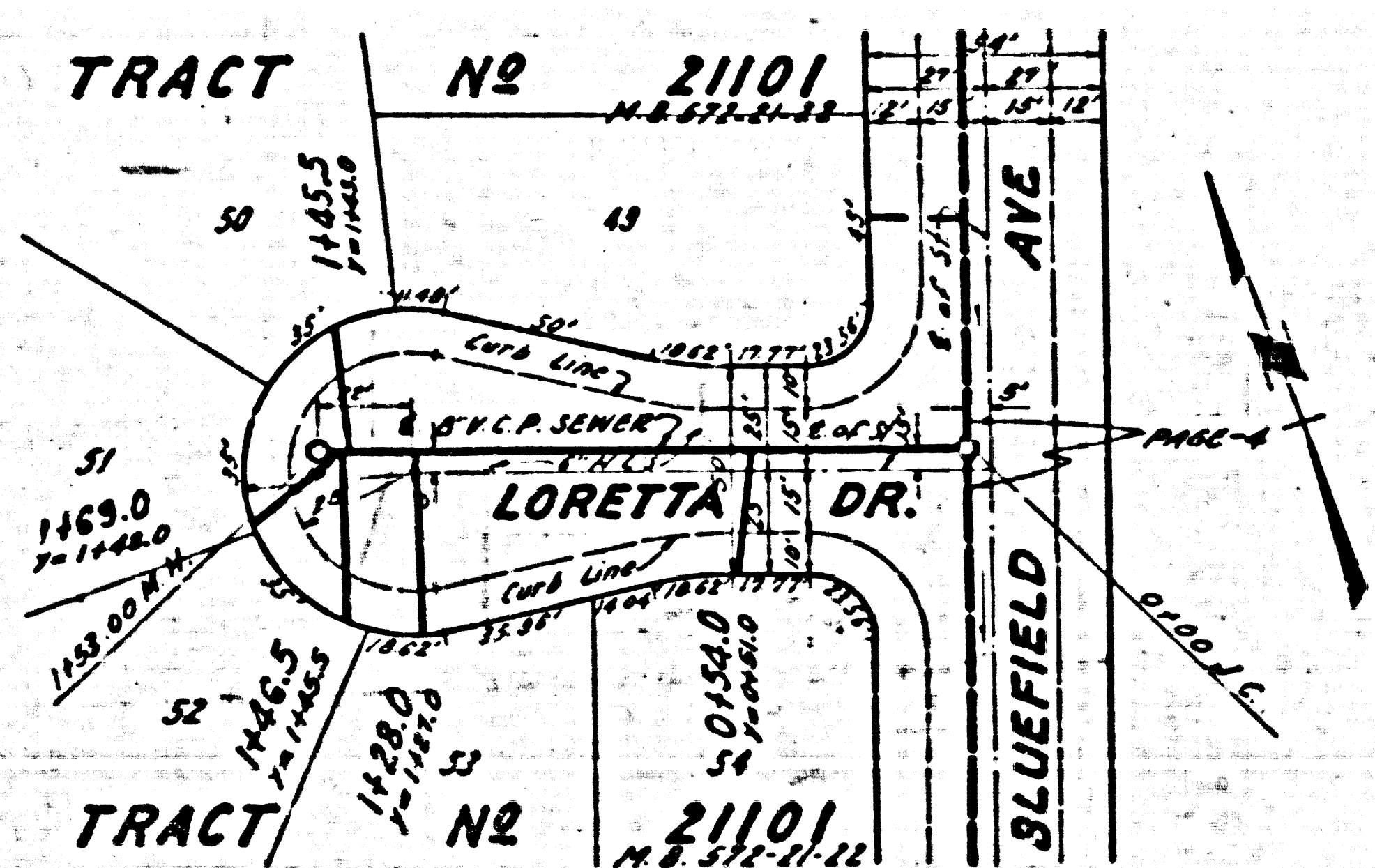
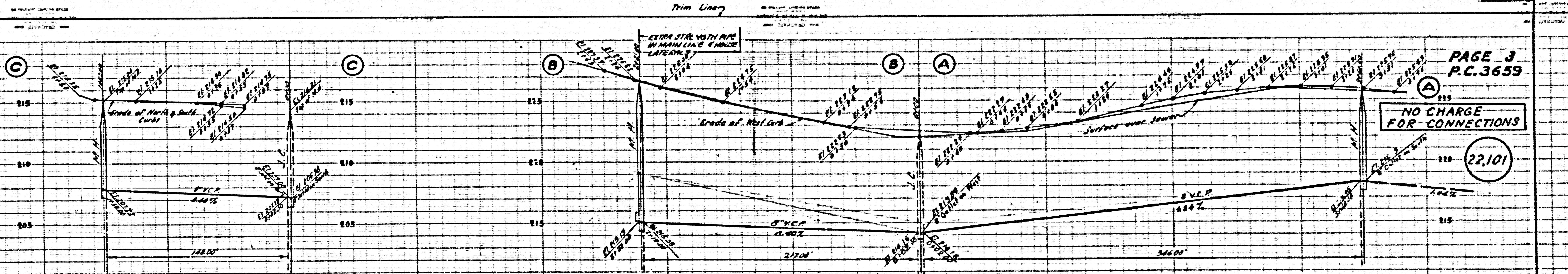
22,099

(5)

checked 1-12-56 K. Lamm

trim line

RC.3659



1/3

