

3660

E 2

Charge for Connections

CHARGE FOR CONNECTIONS

1,807

NE 1/4 RANCHO

R/W

NE 1/4 RANCHO PL. 477, 434

B.M. 5Y 2250 Rd. Dept. Elev. 54.358
183 1/2 ST. & ROSETON AVE., N.E. Cor.
L & T. 1' East of East Curb Return.

INDEX TABLE

SHEETS	PAGES
1	1-4

(BELLFLOWER BLDG. DIST. N° 4)

- NOTE:**
- Provide stakes on the property lines or property lines produced at right angles to the sewer line at the center line of each manhole.
- No representative of the County Engineer will survey or layout any portion of the work.
- The owner or his authorized representative shall furnish the County Engineer with grade sheets and stations for all house laterals and Y branches and shall provide stakes for them at their proper locations with stationing plainly marked. Any change in location shall be requested in writing by the owner or his representative.
- No revisions shall be made in these plans without the approval of the County Engineer.
- Use standard manhole frames and covers, S-a-117. *Except as Noted*
 - Use standard strength pipe
 - Use joint compound for all vitrified clay pipe joints per Spec's, Sec 31.
 - Resurface all trench within paved area to meet L.A. County Road Dept. or California State Highway Dept. requirements in accordance with permit.
 - Excise four feet of sewer at points of interference with poles, S-a-119.
 - House laterals to be constructed with 1/2" rise per foot to Property Line.
 - All structures shall be brick sewer structures, S-a-104. *Except as Noted.*
 - For allowable leakage test, use Formula No. 2, Spec's, Sec. 51.
 - Manhole tops in unimproved Rights-Of-Way to be 6" above finish grade.

Trim Line

PROFILE, ALIGNMENT AND GRADE OF
SANITARY SEWERS
TO BE CONSTRUCTED IN
TRACT N° 21282

P.C. 3660
PAGE 1

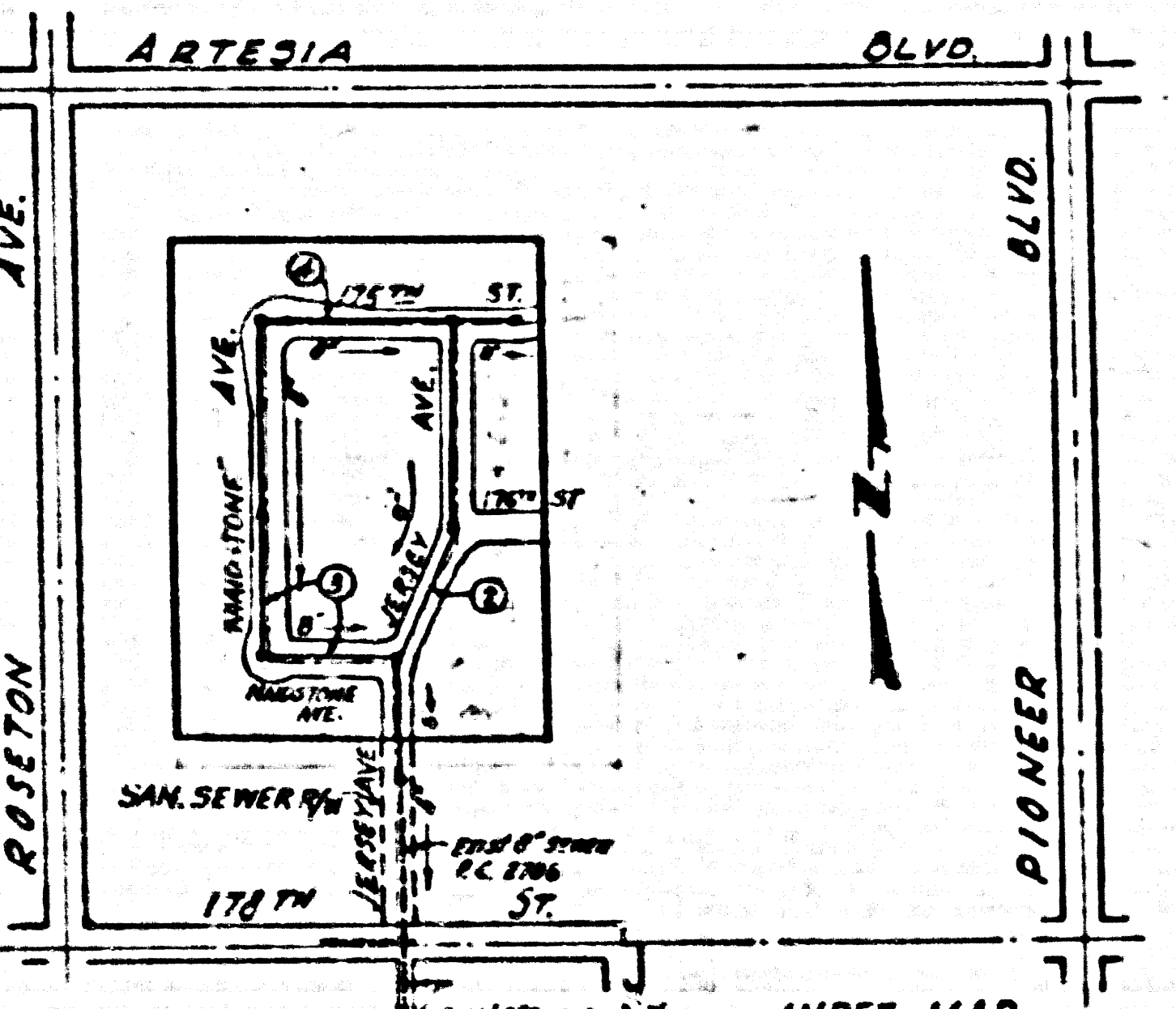
21,806

PRIVATE CONTRACT NO. 3660
W. S. 33
ONE SHEET

Scale: VERT. 1" = 4'
AUGUST 1955
PREPARED IN THE OFFICES OF
LOVETT AND HART
ENGINEERS AND SURVEYORS
S.L.V.S.

No. C.E. No. 7066
FOR LEGEND SEE PLAN NO. S-a-64

NO CHARGE FOR CONNECTIONS
J. V. Duda 9-22-55



INDEX MAP
TRACT N° 21282
P.C. 3660 SCALE 1/8" = 100'

Trim Line

NOTE:

Grades to which the improvement is to be constructed are shown on plans and profiles. Grade points for top of curbs, corner line of streets, or corner line of alleys are shown by circles on profiles. At all points between designated points the grade shall be established so as to conform to a straight line drawn between said designated points.

Elevations are in feet above U.S.G.S. datum or mean sea level.

This drawing and the data hereon are hereby made a part of the specifications.

Work shall be constructed according to specifications on file in the office of the County Engineer and shall be prosecuted only in the presence of the County Engineer.

Before work can be started, the contractor must obtain a permit to excavate in County streets from the L.A. County Road Dept., 108 W. 2nd St. and note a deposit with the County Engineer.

When the work is completed, the contractor shall be responsible for covering the excavation and restoring the same to original condition, sufficient to cover the cost of construction inspection and record plans.

Approval of this plan by the County of Los Angeles does not constitute a representation as to the accuracy of the location of or the existence or non-existence of any underground utility, pipe, or structure within the limits of this project. This note applies to all sheets.

If work is to be done in a State Highway, a permit must be obtained from the State of California, Division of Highways, 120 South Spring Street.

COUNTY OF LOS ANGELES, CALIFORNIA

Approved, William J. Fox, County Engineer
Approved, A. M. Ram
CHIEF DEPT. CITY SAN. DIST. NO. 12
J. V. Duda
S. L. V. S.
Checked by J. V. Duda 9-22-55
Office of County Engineer, Dep. E. & W. 2500

TRACT N° 21282 P.C. 3660

TRACT N° 21282 P.C. 3660

TRACT N° 21282 P.C. 3660

R.S.

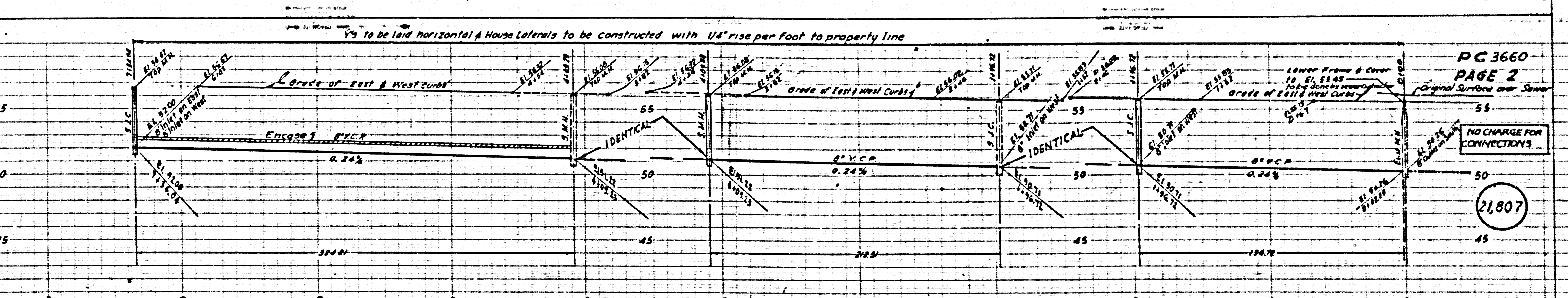
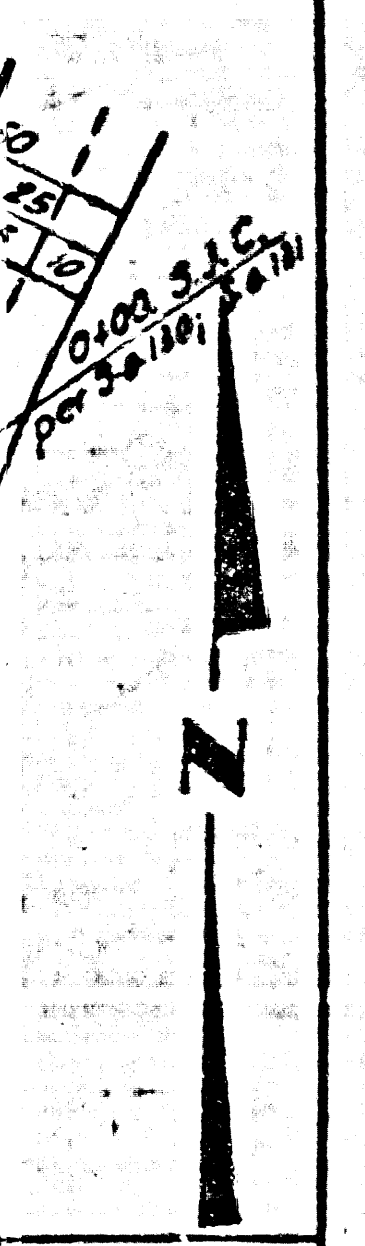
Dated 11-16-55 McLennan

P.C. 3660
PAGE 3

GO
LARGE FOR
RECTIONS

55
50
45

0 7 6 5 4 3 2 1 0

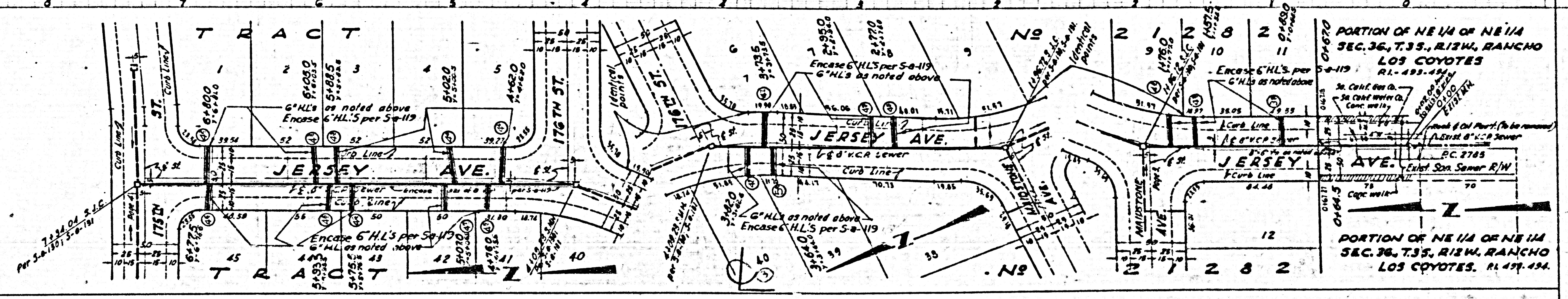


PC 3660
PAGE 2

Original Surface over Sewer

NO CHARGE FOR CONNECTIONS

21,807



PORTION OF NE 1/4 OF NE 1/4
SEC. 36, T.35, R.12W, RANCHO
LOS COYOTES
R.L. 499, 494

PORTION OF NE 1/4 OF NE 1/4
SEC. 36, T.35, R.12W, RANCHO
LOS COYOTES. R.L. 499, 494.

