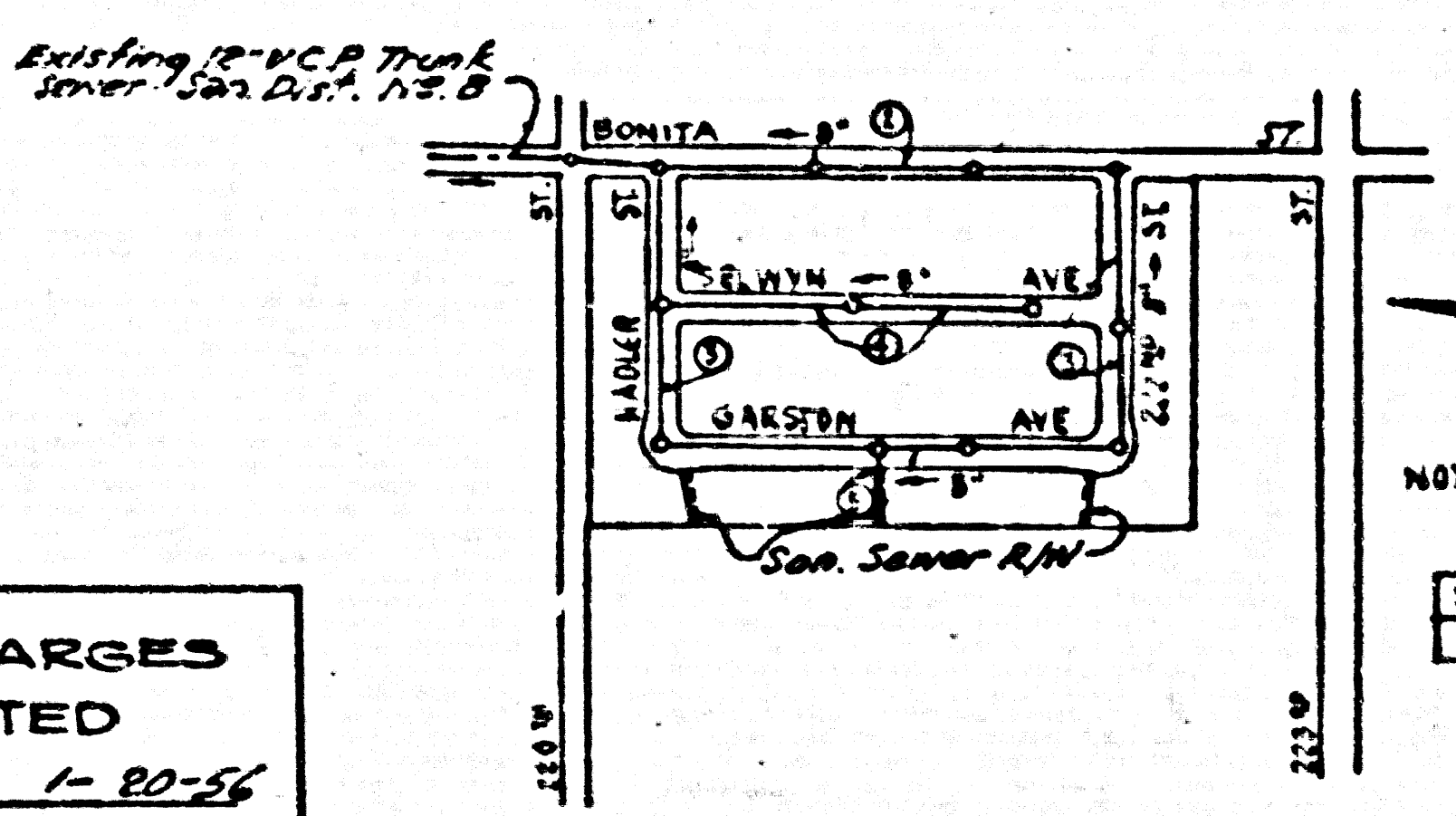


B.M. SY 3108 Elev. 270.87
 2.47 ft. S.E. cor. of Base 94'-24" I.P. of Avalon Builders Supply Co.
 Sign 275 feet S and 46.3 feet E of Centers of Avalon Blvd and 220th St

Datum Note:
 Trunk sewer Elevations are based on datum of C.I. 1748,
 B.M. 23-9, El. 19.157
 Elevation of B.M. SY 3108 per datum of C.I. 1748 = El. 26.62
 Subtract 0.68' from elevations shown hereon to be on
 datum of C.I. 1748

- LEWNOX. BLDG. DIST. No 7**
- NOTE:**
 Provide stakes on the property lines or property lines produced at right angles to the sewer line at the center line of each manhole.
 No representative of the County Engineer will survey or layout any portion of the work.
 The owner or his authorized representative shall furnish the County Engineer with grade sheets and stations for all house laterals and Y branches and shall provide stakes for them at their proper locations with stationing plainly marked. Any change in location shall be requested in writing by the owner or his representative.
 No revisions shall be made in these plans without the approval of the County Engineer
1. Use standard manhole frames and covers, S-a-117.
 2. Use standard strength pipe except as noted.
 3. Use cement mortar for all vitrified clay pipe joints.
 4. Resurface all trench within paved area to meet L.A. County Road Dept. or California State High way Dept. requirements in accordance with permit.
 5. Encase four feet of sewer at points of interference with poles, S-a-119.
 6. House laterals to be constructed with inverts at property line... 6' ... feet below curb grade except as noted.
 7. All structures shall be brick sewer structures, S-a-104.
 8. For allowable leakage test, use Formula No. 1, Spec's, Sec. 51.
 9. Manhole tops in unimproved Rights-Of-Way to be 6" above finish grade.



COLLECT CHARGES
 AS INDICATED
 71.77⁰⁰ Estimated 1-20-56

SCALE: 1" = 40'

NOTE: Figures in circles indicate page numbers.

SHEET	PAGES:
1	1-2

Revision Approved: 136' of 8" V.C.P. added in App 5
 By: *R.C. Johnson* 5-23-56
 Office of County Engineer, City of L.A. 7860

Before breaking into any existing structure and before final acceptance of this work, County Sanitation Districts should be notified in order that required inspection may be made.

INDEX MAP
 P.C. 3662 TRACT No 21851

Sealed 6-7-56 W. Lamm

PROFILE, ALIGNMENT AND GRADE OF
SANITARY SEWERS
 TO BE CONSTRUCTED IN

TRACT No 21851

PRIVATE CONTRACT NO. 3662
 W. S. 28
 1 SHEET

Scale: VERT. 1" = 4'
 HORIZ. 1" = 40'
 OCTOBER 1955
 PREPARED IN THE OFFICES OF
GORDON J. JENNINGS

G. J. Jennings
 Civil Engineer
 No. C.E. No. 7858
 FOR LEGEND SEE PLAN NO. S-a-64

NOTE:
 Grades to which the improvement is to be constructed are shown on plans and profiles. Grade points 4' or top of curb, center line of streets, or center line of alleys are shown by circles on profiles. At all points between designated points the grade shall be established so as to conform to a straight line drawn between said designated points.
 Elevations are in feet above U.S.C. & G.S. sea level datum of 1929.
 This drawing and the data hereon are hereby made a part of the specifications.
 Work shall be constructed according to specifications on file in the office of the County Engineer and shall be prosecuted only in the presence of the County Engineer.
 Before work can be started, the contractor must obtain a permit to excavate in County streets from the L.A. County Road Dept., 108 W. 2nd St. and make a deposit with the County Engineer, Bldg. 318, Park Section Bldg., 253 S. Broadway, sufficient to cover the cost of construction inspection and record plans.
 Approval of this plan by the County of Los Angeles does not constitute a representation as to the accuracy of the location or the existence or non-existence of any underground utility, pipe, or structure within the limits of this project. This note applies to all sheets.
 If work is to be done in a State Highway, a permit must be obtained from the State of California, Division of Highways, 120 South Spring Street.

COUNTY OF LOS ANGELES, CALIFORNIA
 Approved, John A. Lambie, County Engineer
 Approved, A. M. Rasmussen, City Engineer
 By: *A. P. Collins* City Engineer
 Checked by: *R. Johnson* 1-23-56
 Office of County Engineer, Bldg. C. E. No. 7860

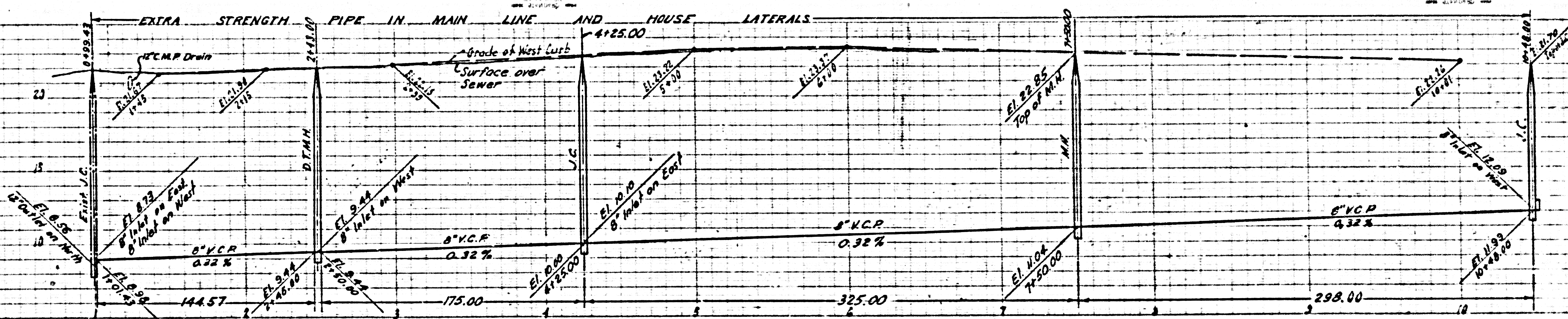
P.C. 3662
 PAGE 1

22,794
 (5)

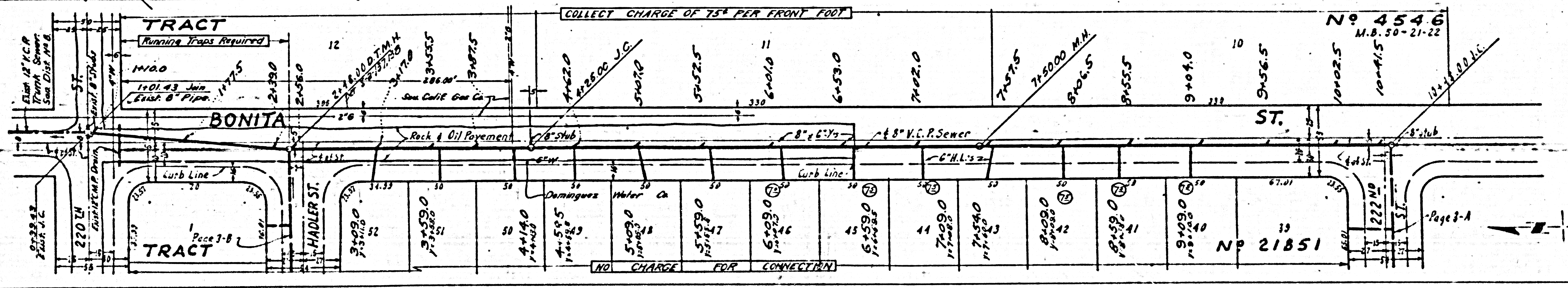
TRACT No 21851

P.C. 3662
 22,794-5MS

R.L.



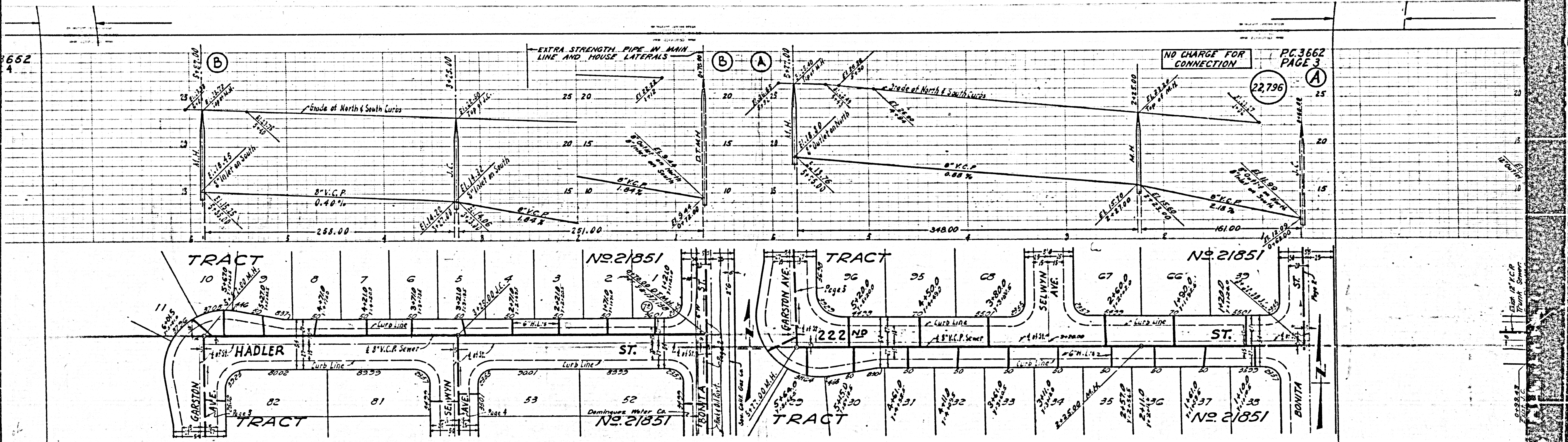
PC. 3662
PAGE 2
22,795
COLLECT CHARGES
AS INDICATED



27

Page 3-A

662



TRACT 10

TRACT NO. 21851

TRACT 222

TRACT NO. 21851

HADLER ST.

ST.

ST.

TRACT 82

TRACT NO. 21851

TRACT

TRACT NO. 21851

GARSTON AVE.

SELWYN AVE.

BONITA

TRACT 81

TRACT NO. 21851

TRACT

TRACT NO. 21851

SEWYNN AVE.

DOMINGUEZ WATER CO.

TRACT

TRACT 53

TRACT NO. 21851

TRACT

TRACT NO. 21851

TRACT 52

TRACT NO. 21851

TRACT

TRACT NO. 21851

TRACT 51

TRACT NO. 21851

TRACT

TRACT NO. 21851

TRACT 50

TRACT NO. 21851

TRACT

TRACT NO. 21851

TRACT 49

TRACT NO. 21851

TRACT

TRACT NO. 21851

TRACT 48

TRACT NO. 21851

TRACT

TRACT NO. 21851

TRACT 47

TRACT NO. 21851

TRACT

TRACT NO. 21851

TRACT 46

TRACT NO. 21851

TRACT

TRACT NO. 21851

TRACT 45

TRACT NO. 21851

TRACT

TRACT NO. 21851

TRACT 44

TRACT NO. 21851

TRACT

TRACT NO. 21851

TRACT 43

TRACT NO. 21851

TRACT

TRACT NO. 21851

TRACT 42

TRACT NO. 21851

TRACT

TRACT NO. 21851

TRACT 41

TRACT NO. 21851

TRACT

TRACT NO. 21851

TRACT 40

TRACT NO. 21851

TRACT

TRACT NO. 21851

TRACT 39

TRACT NO. 21851

TRACT

TRACT NO. 21851

TRACT 38

TRACT NO. 21851

TRACT

TRACT NO. 21851

TRACT 37

TRACT NO. 21851

TRACT

TRACT NO. 21851

TRACT 36

TRACT NO. 21851

TRACT

TRACT NO. 21851

TRACT 35

TRACT NO. 21851

TRACT

TRACT NO. 21851

TRACT 34

TRACT NO. 21851

TRACT

TRACT NO. 21851

TRACT 33

TRACT NO. 21851

TRACT

TRACT NO. 21851

TRACT 32

TRACT NO. 21851

TRACT

TRACT NO. 21851

TRACT 31

TRACT NO. 21851

TRACT

TRACT NO. 21851

TRACT 30

TRACT NO. 21851

TRACT

TRACT NO. 21851

TRACT 29

TRACT NO. 21851

TRACT

TRACT NO. 21851

TRACT 28

TRACT NO. 21851

TRACT

TRACT NO. 21851

TRACT 27

TRACT NO. 21851

TRACT

TRACT NO. 21851

TRACT 26

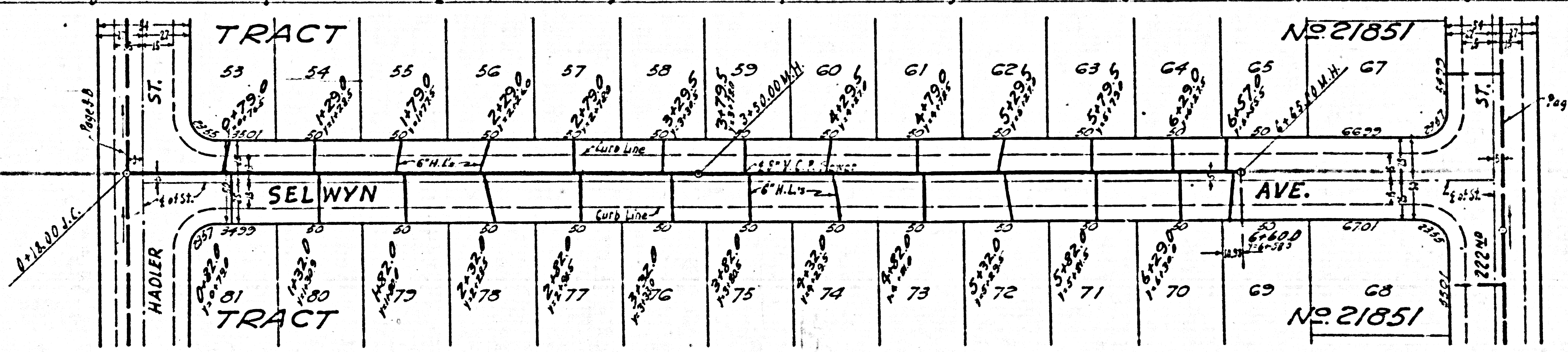
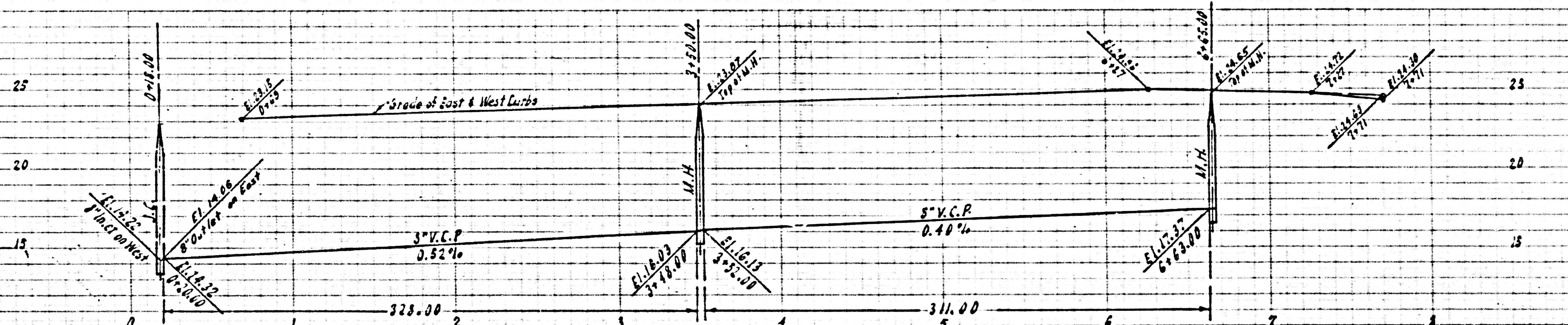
TRACT NO. 21851

TRACT

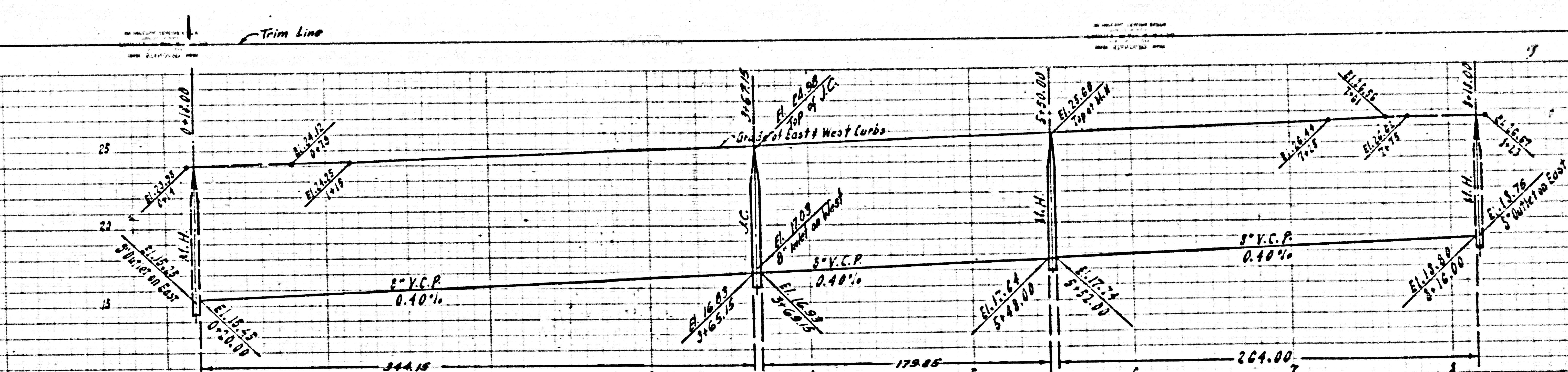
TRACT NO. 21851

P.C. 3662
PAGE 5
22,798
NO CHARGE FOR CONNECTIONS

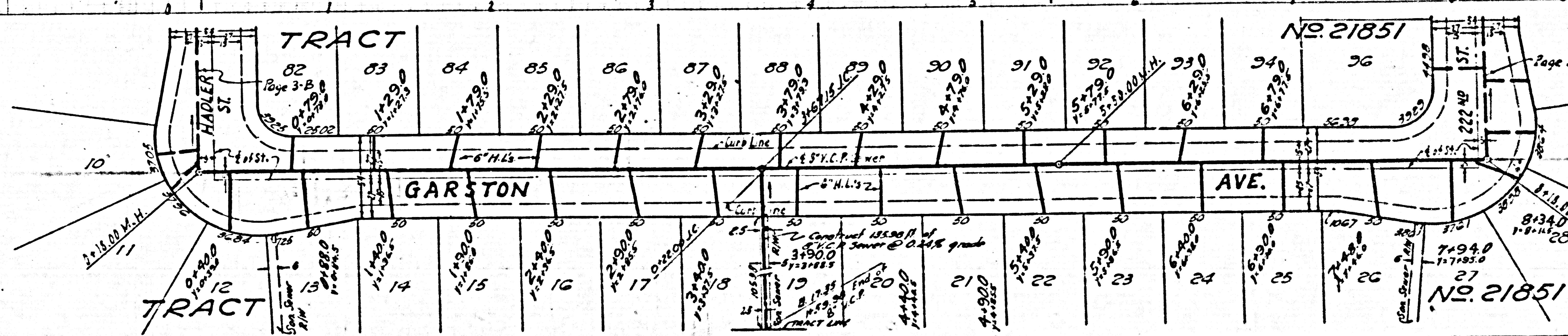
P.C. 3662
PAGE 4
22,797
NO CHARGE FOR CONNECTIONS



412



P.C. 5662
PAGE 5
22,798
NO CHARGE FOR CONNECTIONS



Trim line