

3664
190 #
1/8 Scale

226

SECTIONS

2

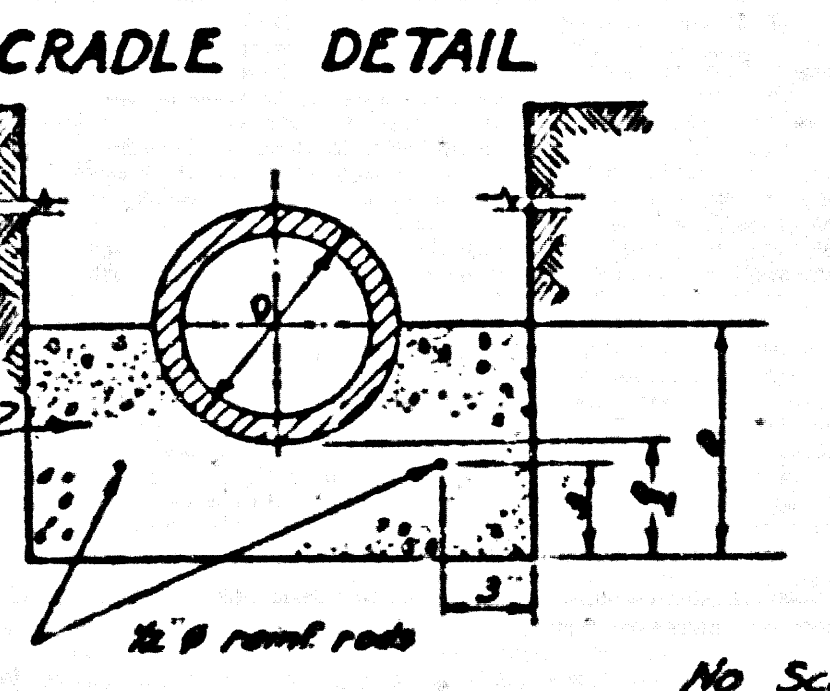
72

SEWER
RIM

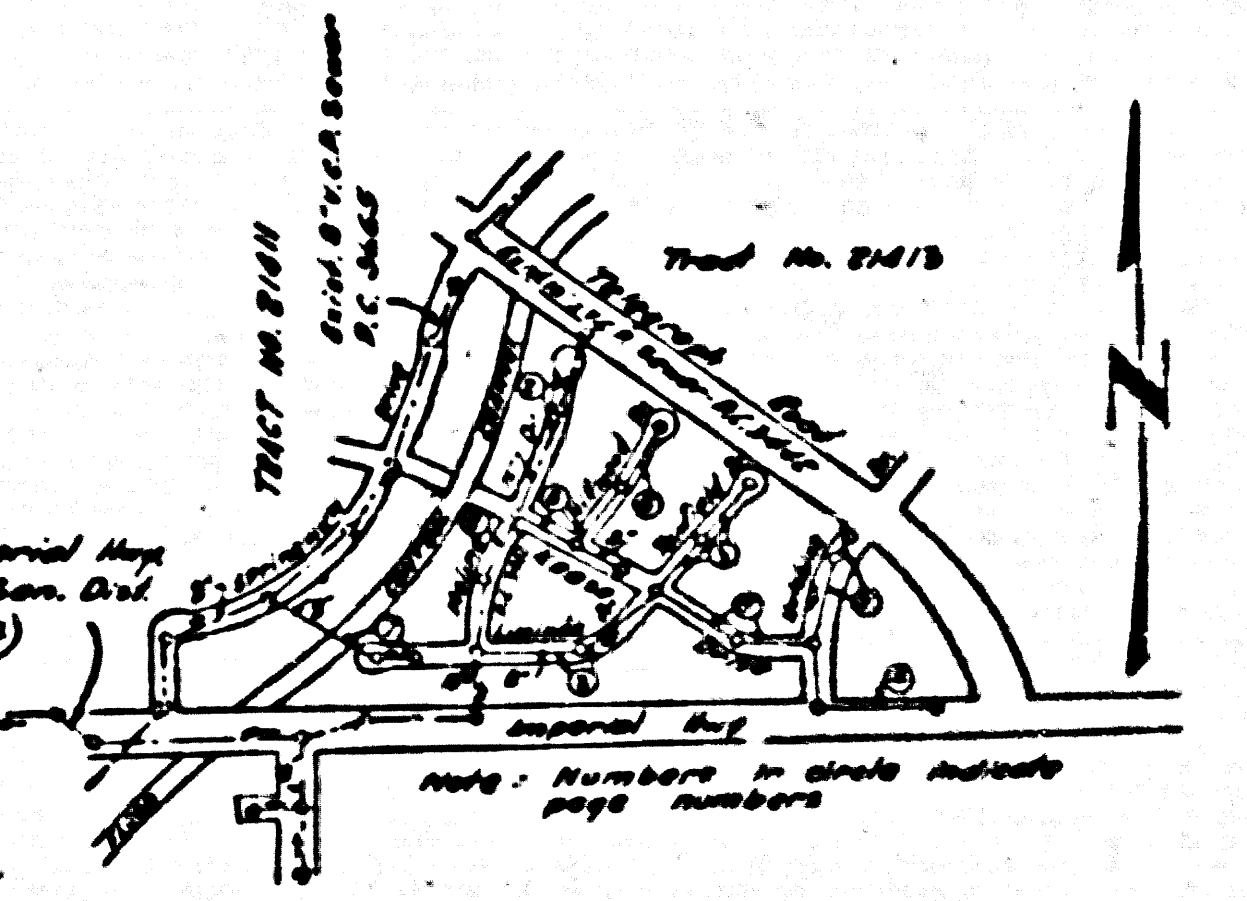
71

2

BENCH MARK S.X. 1155
C.S. Monument at Intersection of Imperial Hwy. &
Luisenlar Ave Elevation: 138.135
Adjusted Elevation: 131.438 (County Surveyors Datum)
Note: To place elevations on this plan use S.X. Datum
and 650' to all elevations above.



Existing 18" Imperial Hwy
Trench Sewer San. Div. 5
No. 18 (1926)



INDEX MAP
SCALE: 1"=1600'
TRACT NO. 2142
P.C. 3664

SHEET	PAGES
1	1-3
2	4-7

NO CHARGE
FOR CONNECTIONS

Checked 2-21-56 [Signature]

NORWALK BLDG. DIST. NO. 4.2

NOTE:

- Provide stakes on the property lines or property lines produced at right angles to the sewer line at the center line of each manhole.
- No representative of the County Engineer will survey or layout any portion of the work.
- The owner or his authorized representative shall furnish the County Engineer with grade sheets and stations for all house laterals and Y branches and shall provide stakes for them at their proper locations with stationing plainly marked. Any change in location shall be requested in writing by the owner or his representative.
- No revisions shall be made in these plans without the approval of the County Engineer.
- Use standard manhole frames and covers, S-a-117.
- Use standard strength pipe except as noted.
- Use cement mortar for all vitrified clay pipe joints. EXCEPT AS NOTED.
- Resurface all trench within paved area to meet L.A. County Road Dept. or California State Highway Dept. requirements in accordance with permit.
- Encase four feet of sewer at points of interference with poles, S-a-119.
- House laterals to be constructed with inverts at property line $\frac{1}{2}$ feet below curb grade except as noted.
- All structures shall be brick sewer structures, S-a-104.
- For allowable leakage test, use Formula No. 1, Spec's, Sec. 51.
- Manhole tops in unimproved Rights-Of-Way to be 6" above finish grade.
- The contractor shall satisfy himself of all substructures and shall be responsible for their location.
- No construction will be permitted in filled areas unless acceptable certification is submitted to the construction Division of the county Engineers Department that compaction is greater than 90%.
 - If compaction is less than 90%, the sewer must be cradled as shown on plans. (See detail page 11)
 - If compaction is greater than 90%, cradling is not required. However, joint compound must be substituted for cement mortar for all joints in filled areas.

Trim Line

PROFILE, ALIGNMENT AND GRADE OF
SANITARY SEWERS
TO BE CONSTRUCTED IN
TRACT NO. 2142

P.C. 3664
PAGE 1
DOUBLE SCALE

22,225

PRIVATE CONTRACT NO. 3664
W. S. 34
2 SHEETS
Scale: VERT. 1"=8'
HORIZ. 1"=40' A:6, 1958
PREPARED IN THE OFFICES OF
WM. H. FAIR INC.

[Signature]

No. C.E. No. 6583

FOR LEGEND SEE PLAN NO. S-a-64

NOTE:

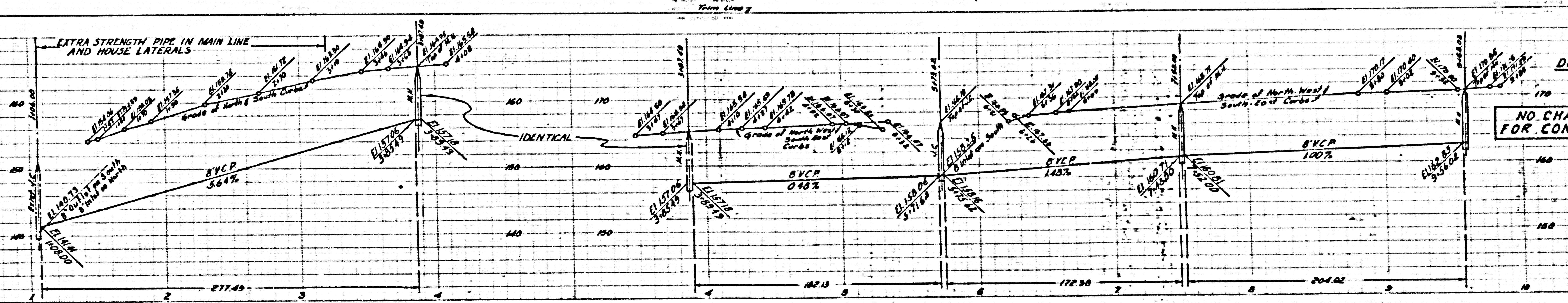
Grades to which this improvement is to be constructed are shown on plans and profiles. Grade points for top of curbs, center line of streets, or center line of alleys are shown by circles on profiles. At all points between designated points the grade shall be established so as to conform to a straight line drawn between said designated points. Elevation are in feet above U.S.G.S. datum or mean sea level. This drawing and the data hereon are hereby made a part of the specifications. Work shall be constructed according to specifications on file in the office of the County Engineer and shall be prosecuted only in the presence of the County Engineer. Before work can be started, the contractor must obtain a permit to excavate in County streets from the L.A. County Road Dept., 120 W. 2nd St. and make a deposit with the County Engineer, \$100.00. Sufficient to cover the cost of construction inspection and record plans. Approval of this plan by the County of Los Angeles does not constitute a representation as to the accuracy of the location of or the existence or non-existence of any underground utility, pipe, or structure within the limits of this project. This note applies to all sheets. If work is to be done in a State Highway, a permit must be obtained from the State of California, Division of Highways, 120 South Spring Street.

COUNTY OF LOS ANGELES, CALIFORNIA
Approved, John A. Lambie County Engineer
Approved, A. M. Raw...
Checked by [Signature] 10-31-55
Office of County Engineer, P.O. Box 7260

Trim Line

1
1958
TRACT 2142

2221

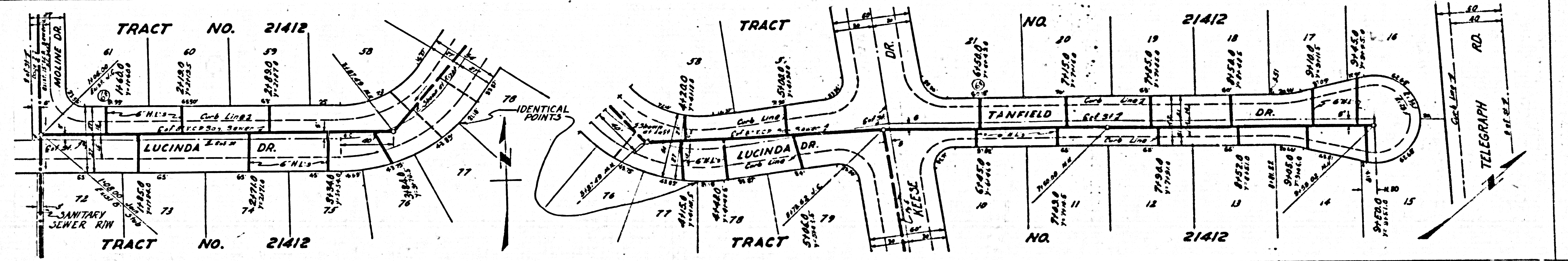


P.C. 3664
Page 2
Double Scale

NO CHARGE
FOR CONNECTIONS

22,227

PC 3664



PC 3664
Page 4
Double Scale

22229

IMPERIAL
HWY
Proposed Channel Improvement

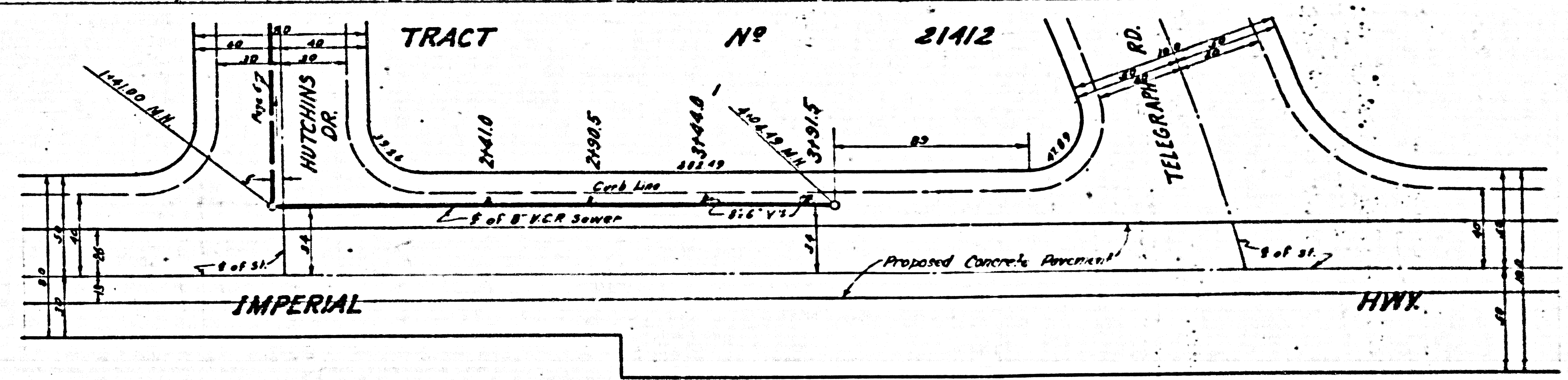
EXTRA STRENGTH PIPE IN MAIN LINE

PC 3664
Page 4
Double Scale

NO CHARGE
FOR CONNECTIONS

22228

5

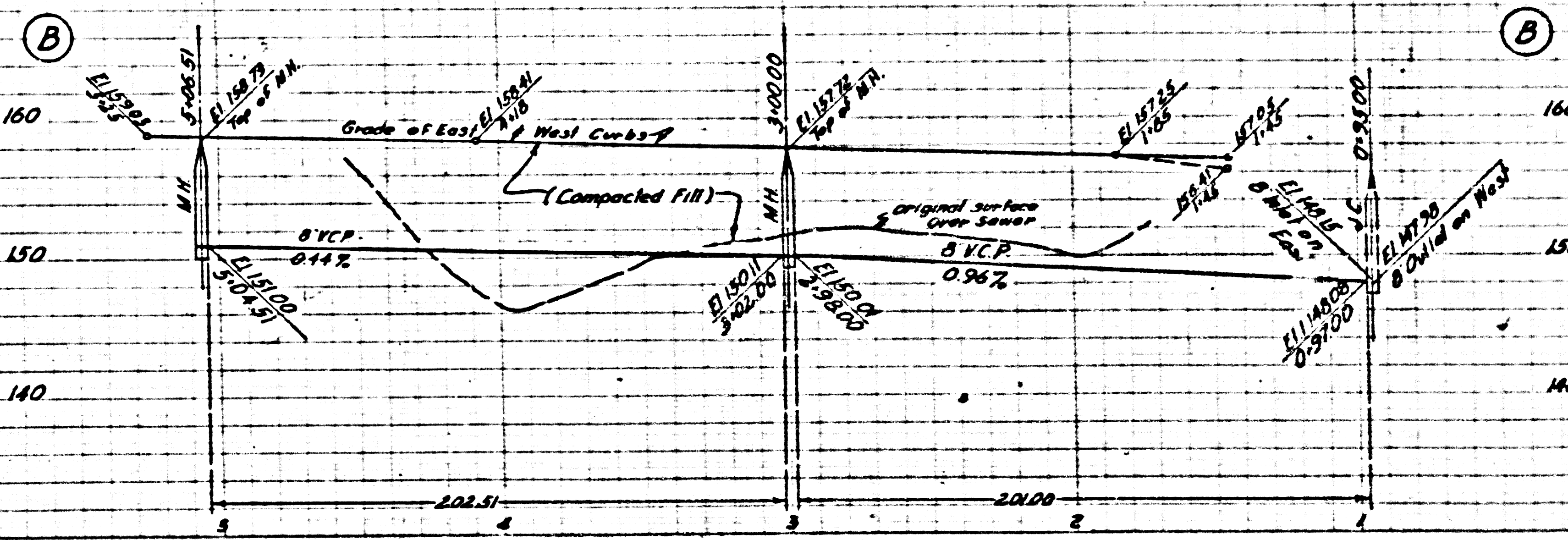


IMPERIAL HWY

P.C. 3664
Page 7
Double Scale

NO CHARGE
FOR CONNECTIONS

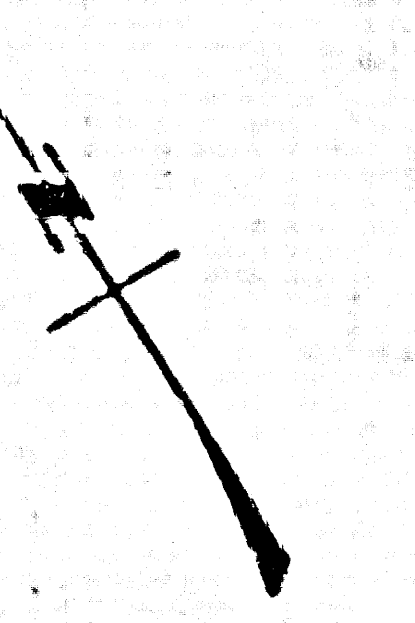
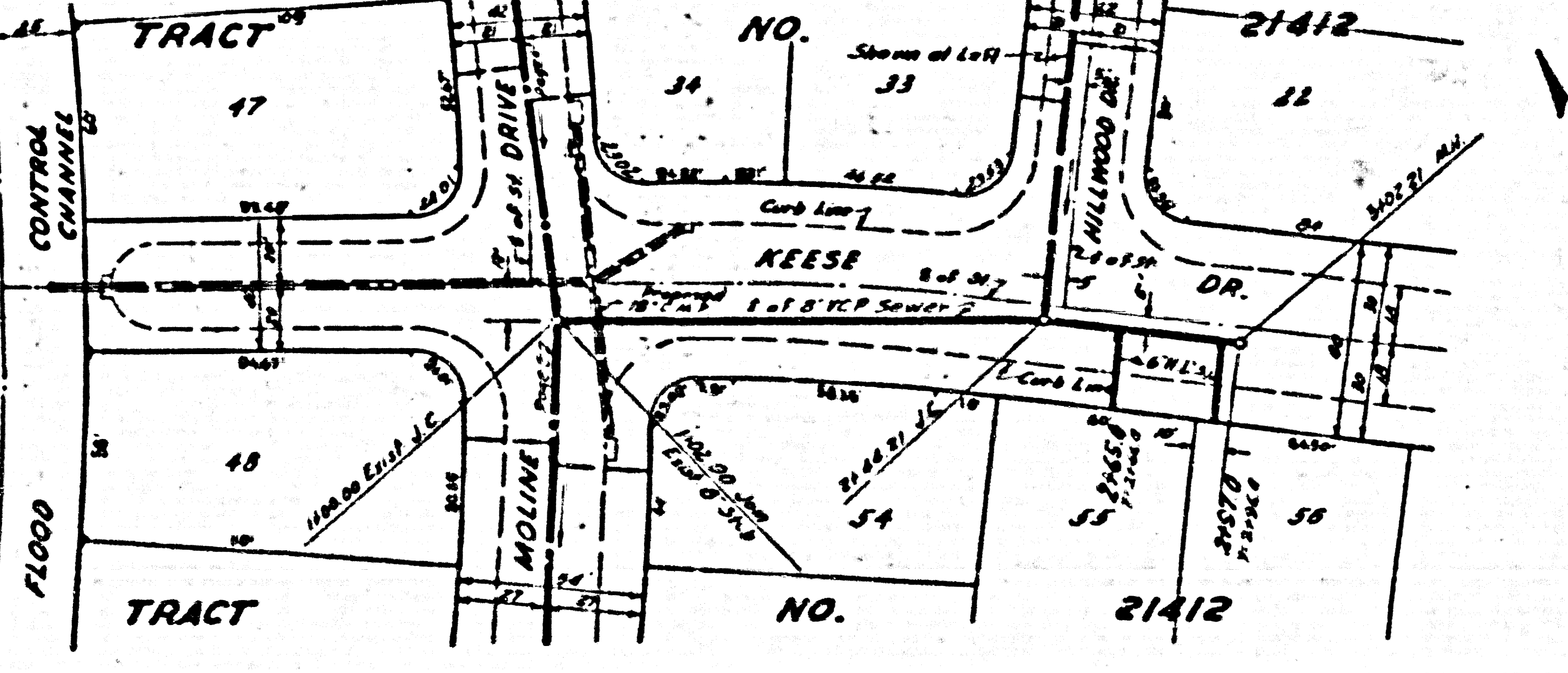
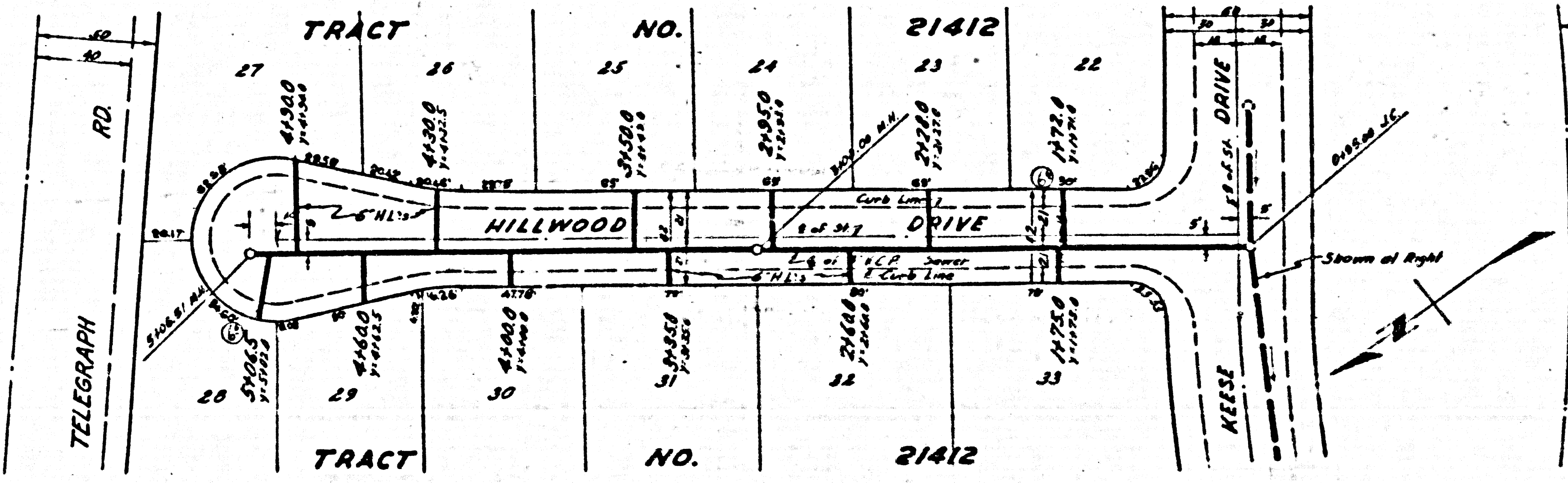
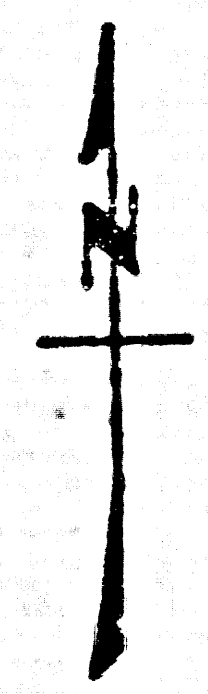
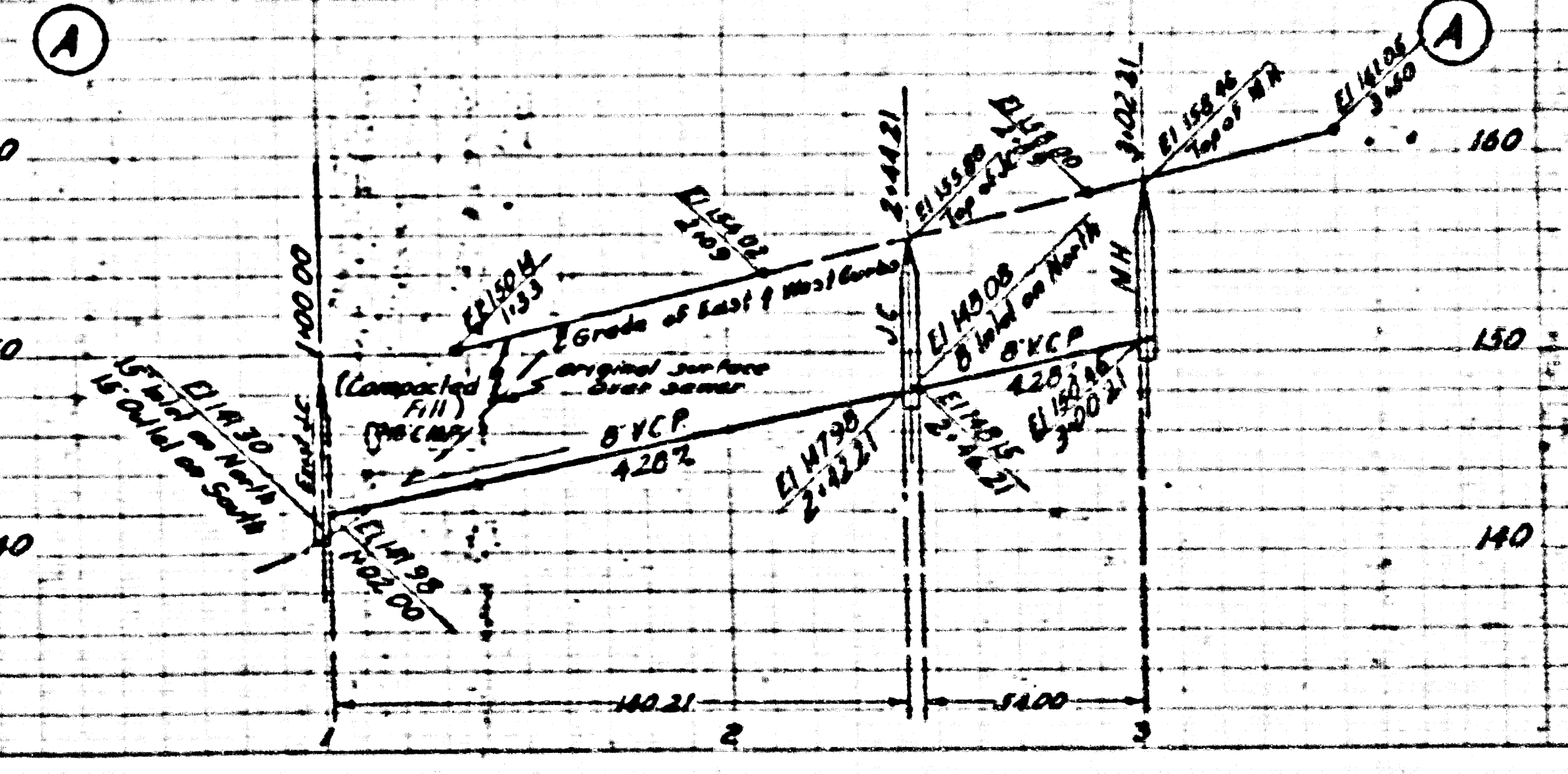
22,231

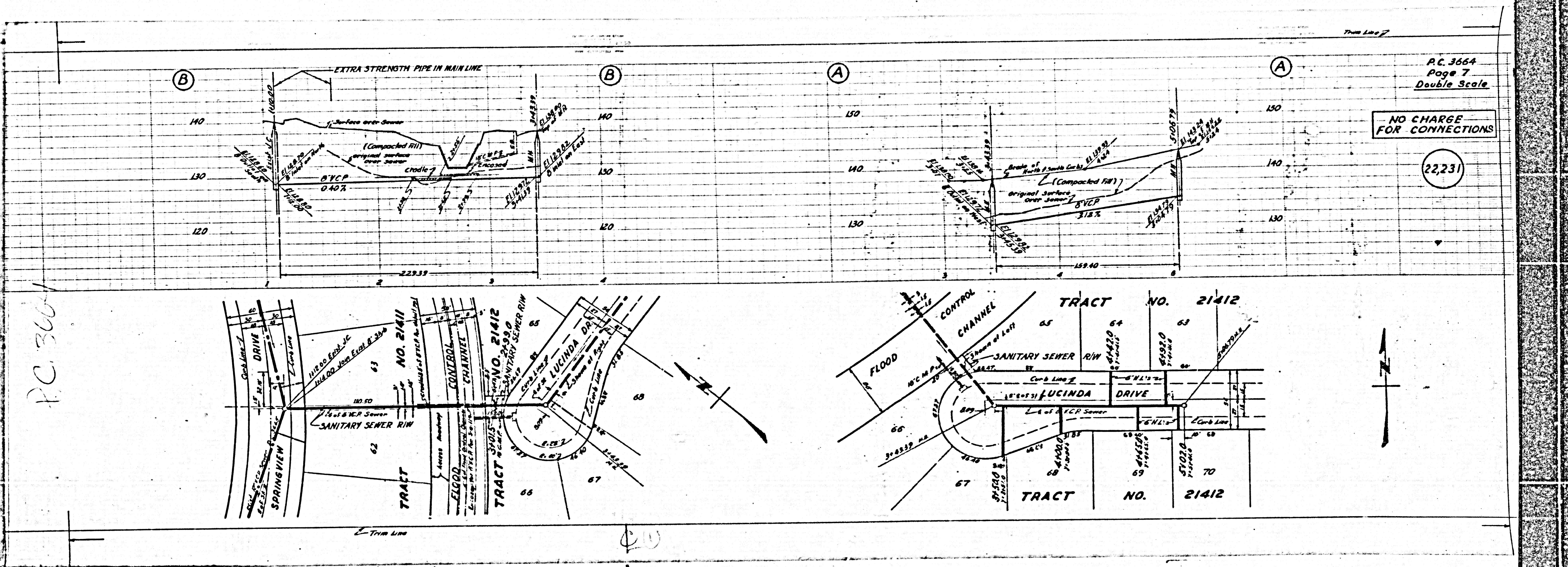


P.C. 3664
Page 6
Double Scale

NO CHARGE
FOR CONNECTIONS

22,230





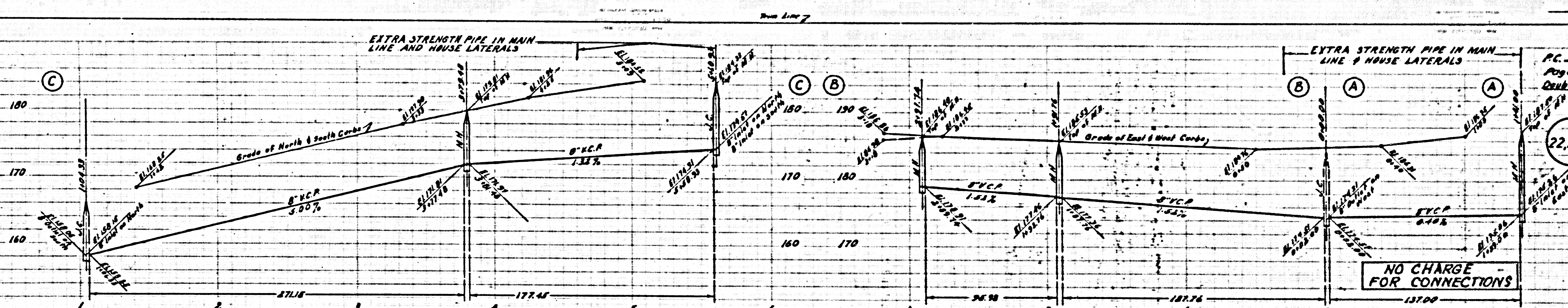
P.C. 3664
Page 7
Double Scale

NO CHARGE
FOR CONNECTIONS

22231

P.C. 3664

P.C. 3664
Page 6
Double Scale
NO CHARGE
FOR CONNECTIONS
22230



P.C. 3664
Page 5
Double Scale
22229
NO CHARGE
FOR CONNECTIONS

